



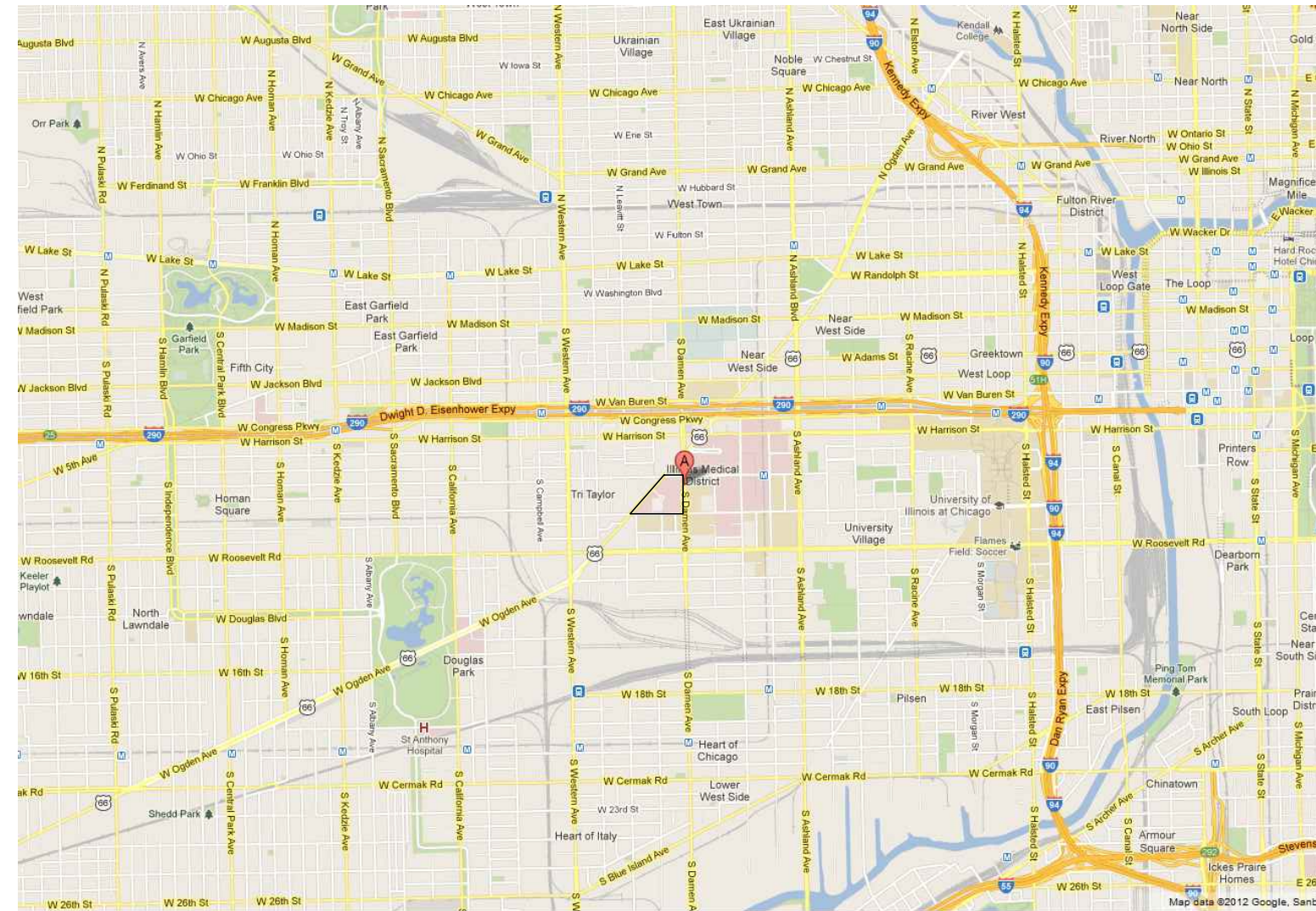
JESSE BROWN VA MEDICAL CENTER

820 S. DAMEN AVE. CHICAGO, ILLINOIS 60612

MASONRY REPAIRS, PHASE 10



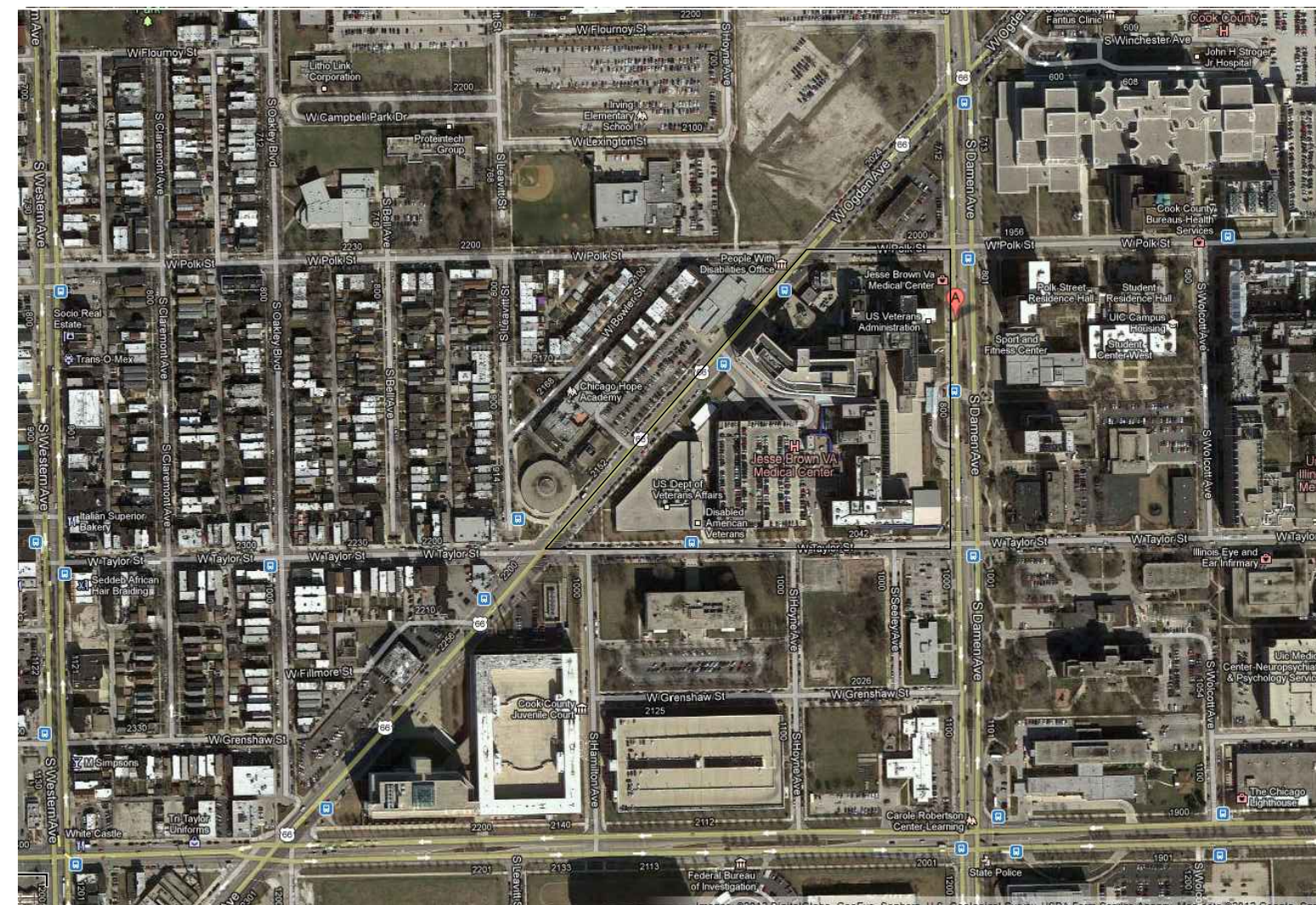
VICINITY MAP



| Sheet Index | |
|-------------|--|
| R0-10 | COVER SHEET |
| R1-10 | PHASE LAYOUT |
| R2-10 | ELEVATION |
| R3-10 | BLANK |
| R4-10 | CONCRETE REPAIRS AND EXPANSION JOINT |
| R5-10 | BRICK AND SHELF ANGLE REPAIRS AT WINDOWS |
| R6-10 | SHELF ANGLE REPAIRS AWAY FROM WINDOWS |
| R7-10 | PARAPET WALL DETAILS |
| R8-10 | MISCELLANEOUS REPAIR DETAILS |
| R9-10 | MISCELLANEOUS REPAIR DETAILS |

R0-10
└─ PHASE NUMBER
└─ SHEET NUMBER

SITE LOCATION MAP



820 S. DAMEN AVENUE,
CHICAGO, IL 60612

| Phase 10 Bid Quantities | | | |
|-------------------------|--|----------|--------------------|
| Item | Type of Work | Unit | Estimated Quantity |
| 1a | Remove masonry at corners per detail 6/R4-10 | sq. ft. | 460 |
| 1b | Replace masonry at corners per details 6/R4-10 | sq. ft. | 460 |
| 2a | Remove concrete per details 2/R4-10 and 3/R4-10 | sq. ft. | 200 |
| 2b | Replace concrete per detail 2/R4-10 and 3/R4-10 | sq. ft. | 200 |
| 3a | Remove parapet and coping stone per sheet R7-10 | lin. ft. | 60 |
| 3b | Replace parapet and new coping stone and integrate with existing roof system per sheet R7-10 | lin. ft. | 60 |
| 4 | Cut new vertical expansion joint per 4/R4-10 | lin. ft. | 300 |
| 5a | Remove shelf angle including masonry work per detail 1/R6-10 | lin. ft. | 180 |
| 5b | Replace new steel shelf angle and flashing including masonry work per detail 1/R6-10 | lin. ft. | 180 |
| 6a | Remove window lintel (steel angle) including masonry work per detail 4/R5-10 | lin. ft. | 300 |
| 6b | Replace new window lintel (steel angle) and flashing including masonry work per detail 4/R5-10 | lin. ft. | 300 |
| 7 | Remove exterior wythe of brick masonry | sq. ft. | 50 |
| 8 | Install exterior wythe of brick masonry | sq. ft. | 50 |
| 9a | Remove limestone panel | sq. ft. | 0 |
| 9b | Replace limestone panel per 3/R8-10 | sq. ft. | 0 |
| 10 | Install supplemental Helifix anchors per details 1/R8-10, 1/R5-10, and 3/R5-10 (location of Helifix anchors will be verified by COTR/AE before installation; contractor will provide drawings showing location of intended installation) | each | 1,100 |
| 11 | Grind and repoint masonry mortar per detail 4/R8-10 and 5/R8-10 | sq. ft. | 2,800 |
| 12 | Grind and repoint limestone mortar per details 4/R8-10 and 6/R8-10 | sq. ft. | 0 |
| 13 | Remove existing sealant and install new sealant and backer rod at window perimeter per detail 5/R5-10 | lin. ft. | 600 |
| 14 | Facade cleaning | sq. ft. | 3,500 |
| 15 | Remove and replace damaged limestone window sill | sq. ft. | 25 |
| 16 | Seal cracks in window sill | lin. ft. | 30 |
| 17 | Remove Jesse Brown VA Hospital sign; relocate on roof, securely position to be observed from street level; replace sign once masonry repair work is completed | 1 | 0 |
| 18 | Roof membrane removal and replacement at parapet | sq. ft. | 350 |

| | | |
|-----------|-----------------|---------|
| 9 | | |
| 8 | | |
| 7 | | |
| 6 | | |
| 5 | | |
| 4 | | |
| 3 | 100% COMPLETION | 7/31/13 |
| 2 | 95% COMPLETION | 7/5/12 |
| 1 | 35% COMPLETION | 1/16/12 |
| Revisions | | Date |



FREGA ASSOCIATES, LTD.
ARCHITECTS/ENGINEERS/PLANNERS
411 S. Wells Street, 5th Floor
Chicago, IL 60607
PROJECT NO. 557-10-132



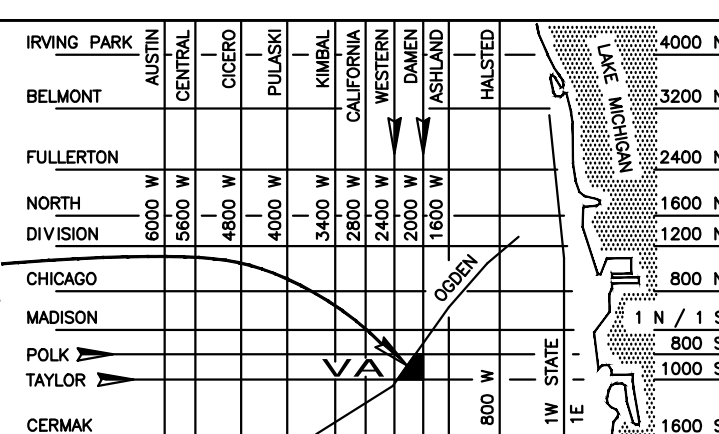
ENGINEERS
ARCHITECTS
MATERIALS SCIENTISTS

Wiss, Janney, Elstner Associates, Inc.
330 Pfingsten Road
Northbrook, Illinois 60062
847.272.7400 tel | 847.291.5189 fax
www.wja.com

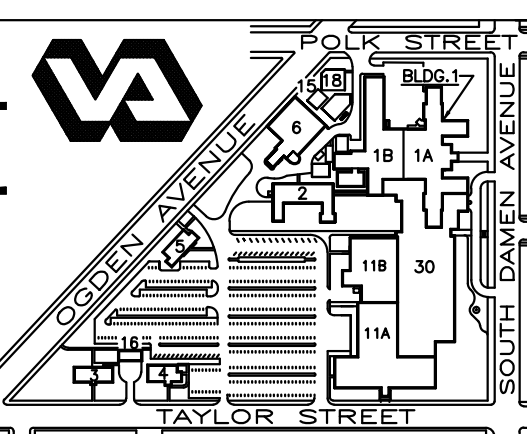
Headquarters & Laboratories: Northbrook, Illinois
Atlanta | Austin | Boston | Chicago | Cleveland | Dallas | Denver | Detroit
Honolulu | Houston | Los Angeles | Minneapolis | New Haven | New York
Princeton | San Francisco | Seattle | Washington, D.C.

AREA LOCATION MAP

WEST SIDE
MEDICAL CENTER



SITE PLAN

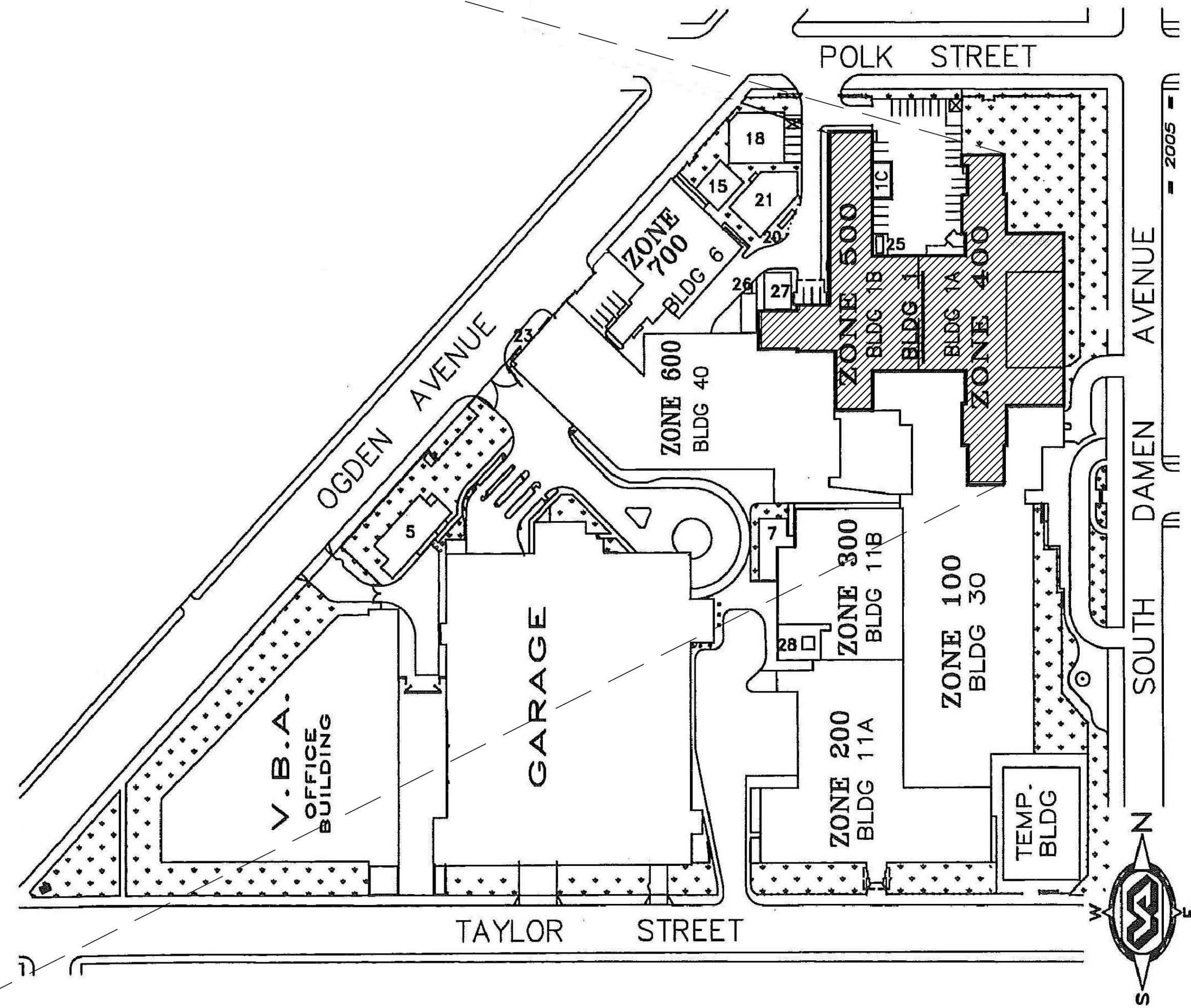
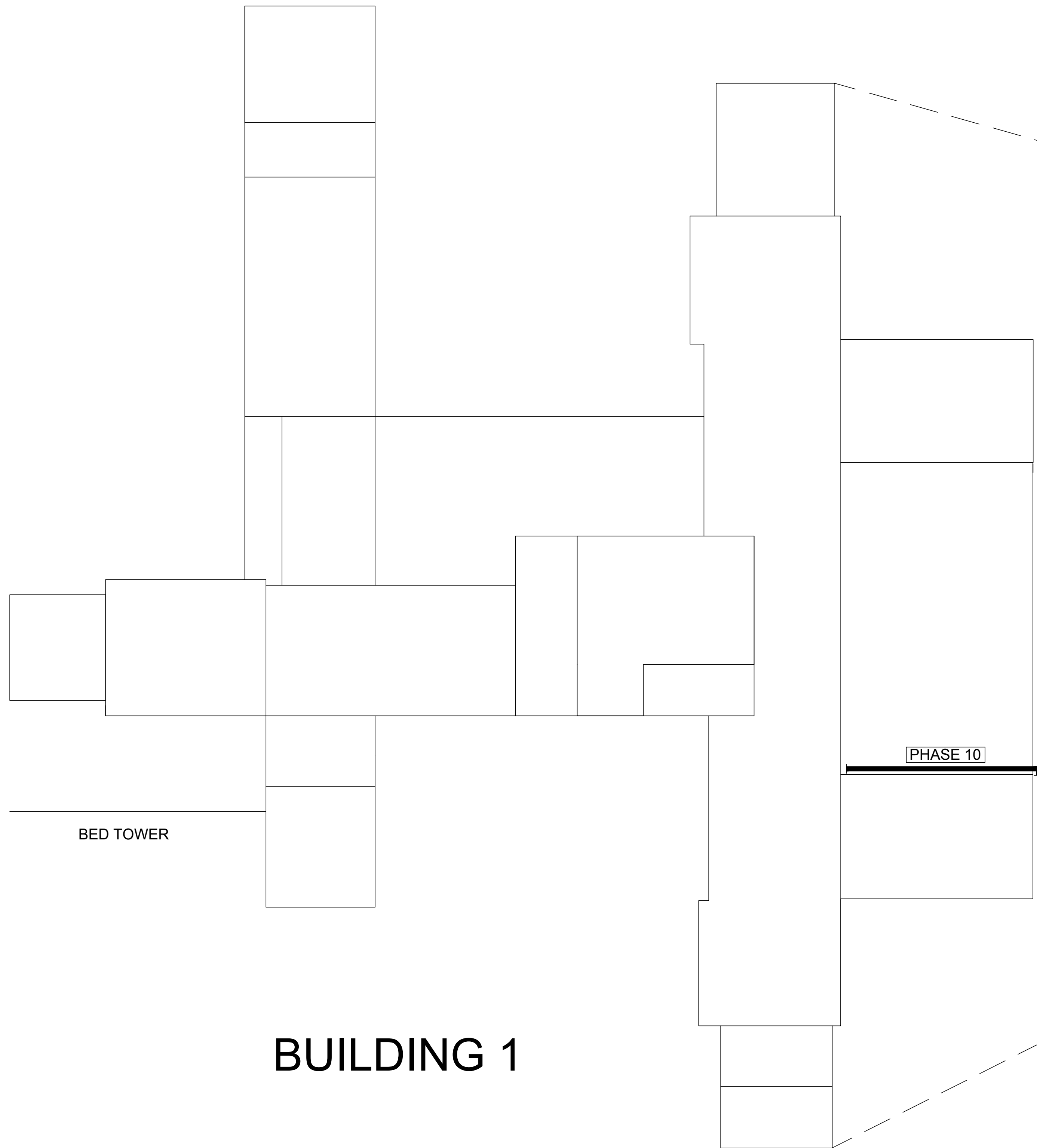


| | |
|--------------------------------|------|
| Drawing Title | |
| BUILDING 1 PHASE LAYOUT | |
| Approved: Chief of Engineering | Date |
| Approved: Director | Date |

| | |
|--|----------------|
| Project Title | |
| PHASE 10 V.A. CHICAGO Medical Center | |
| Date | 7/31/13 |
| Project No. | (CONSTRUCTION) |
| Drawing No. | R0-10 |
| Dwg. 1 of 10 | |
| Location | |
| 820 S. DAMEN Ave. CHICAGO IL - 60612 | |

DEPARTMENT OF
VETERANS AFFAIRS

one-eighth inch = one foot
one-quarter inch = one foot
three-eighths inch = one foot
one-half inch = one foot
three-quarters inch = one foot
one inch = one foot
one and one-half inches = one foot
three inches = one foot



BUILDING 1

BED TOWER

PHASE 10

V.B.A.
OFFICE
BUILDING

GARAGE

ZONE 100
BLDG 30

ZONE 200
BLDG 11A

ZONE 300
BLDG 11B

ZONE 400
BLDG 40

ZONE 500
BLDG 1

ZONE 600
BLDG 1A

ZONE 700
BLDG 1B

TEMP.
BLDG



| Revisions | Date |
|-----------|-------------------------|
| 9 | |
| 8 | |
| 7 | |
| 6 | |
| 5 | |
| 4 | |
| 3 | 100% COMPLETION 7/31/13 |
| 2 | 95% COMPLETION 7/5/12 |
| 1 | 35% COMPLETION 1/16/12 |



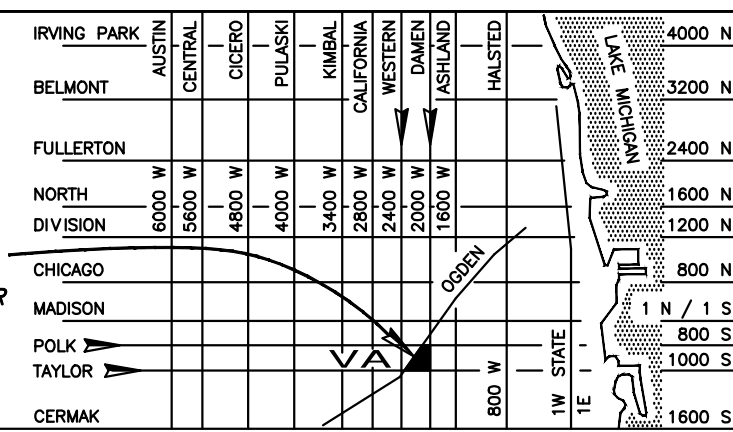
FREGA ASSOCIATES, LTD.
ARCHITECTS ENGINEERS PLANNERS
411 S. Wells Street, 5th Floor
Chicago, IL 60607
PROJECT NO. 537-10-132

ENGINEERS
ARCHITECTS
MATERIALS SCIENTISTS

Wiss, Janney, Elstner Associates, Inc.
330 Pfingsten Road
Northbrook, Illinois 60062
847.272.7400 tel | 847.291.5189 fax
www.wja.com

Headquarters & Laboratories: Northbrook, Illinois
Atlanta | Austin | Boston | Chicago | Cleveland | Dallas | Denver | Detroit
Honolulu | Houston | Los Angeles | Minneapolis | New Haven | New York
Princeton | San Francisco | Seattle | Washington, D.C.

AREA
LOCATION
MAP



SITE
PLAN



| Drawing Title | |
|--------------------------------|------|
| BUILDING 1 PHASE LAYOUT | |
| Approved: Chief of Engineering | Date |
| Approved: Director | Date |

| Project Title | |
|---|--------------------------------|
| PHASE 10 V.A. CHICAGO Medical Center | |
| Building Number & Floor BUILDING 1 ALL FLOORS | Checked JEP Drawn SBS |
| Location 820 S. DAMEN Ave. CHICAGO IL - 60612 | |
| Project No. 7/31/13 (CONSTRUCTION) | |
| DRAWING NO. R1-10 Dwg. 2 of 10 | |

DEPARTMENT OF
VETERANS AFFAIRS

DEPARTMENT OF
VETERANS AFFAIRS

THIS PAGE INTENTIONALLY LEFT BLANK

| Revisions | Date |
|-----------|-------------------------|
| 9 | |
| 8 | |
| 7 | |
| 6 | |
| 5 | |
| 4 | |
| 3 | 100% COMPLETION 7/31/13 |
| 2 | 95% COMPLETION 7/5/12 |
| 1 | 35% COMPLETION 1/16/12 |

FREGA ASSOCIATES, LTD.
ARCHITECTS ENGINEERS PLANNERS
411 S. Wells Street, 5th Floor
Chicago, IL 60607
PROJECT NO. 537-10-132

WJE ENGINEERS
ARCHITECTS
MATERIALS SCIENTISTS

Wiss, Janney, Elstner Associates, Inc.
330 Pfingsten Road
Northbrook, Illinois 60062
847.272.7400 tel | 847.291.5189 fax
www.wja.com

Headquarters & Laboratories: Northbrook, Illinois
Atlanta | Austin | Boston | Chicago | Cleveland | Dallas | Denver | Detroit
Honolulu | Houston | Los Angeles | Minneapolis | New Haven | New York
Princeton | San Francisco | Seattle | Washington, D.C.

AREA LOCATION MAP
WEST SIDE MEDICAL CENTER

SITE PLAN

BUILDING 1
ELEVATION AREA OF WORK

PHASE 10
V.A. CHICAGO
Medical Center

Approved: Chief of Engineering Date
Approved: Director Date

Building Number & Floor
BUILDING 1
ALL FLOORS

Checked
JEP

Drawn
SBS

Location 820 S. DAMEN Ave.
CHICAGO IL - 60612

Project Title

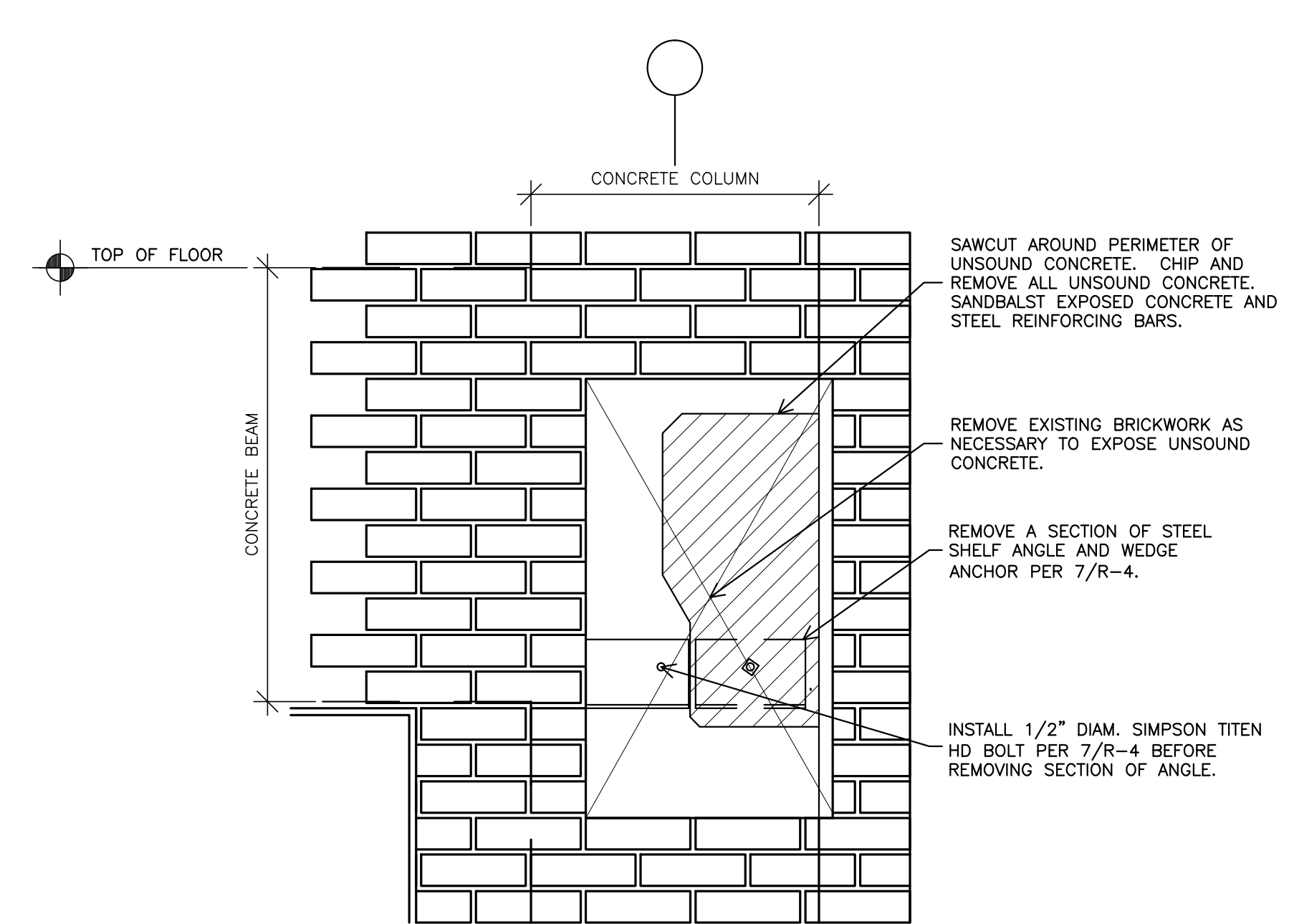
Date 7/31/13

Project No.
(CONSTRUCTION)

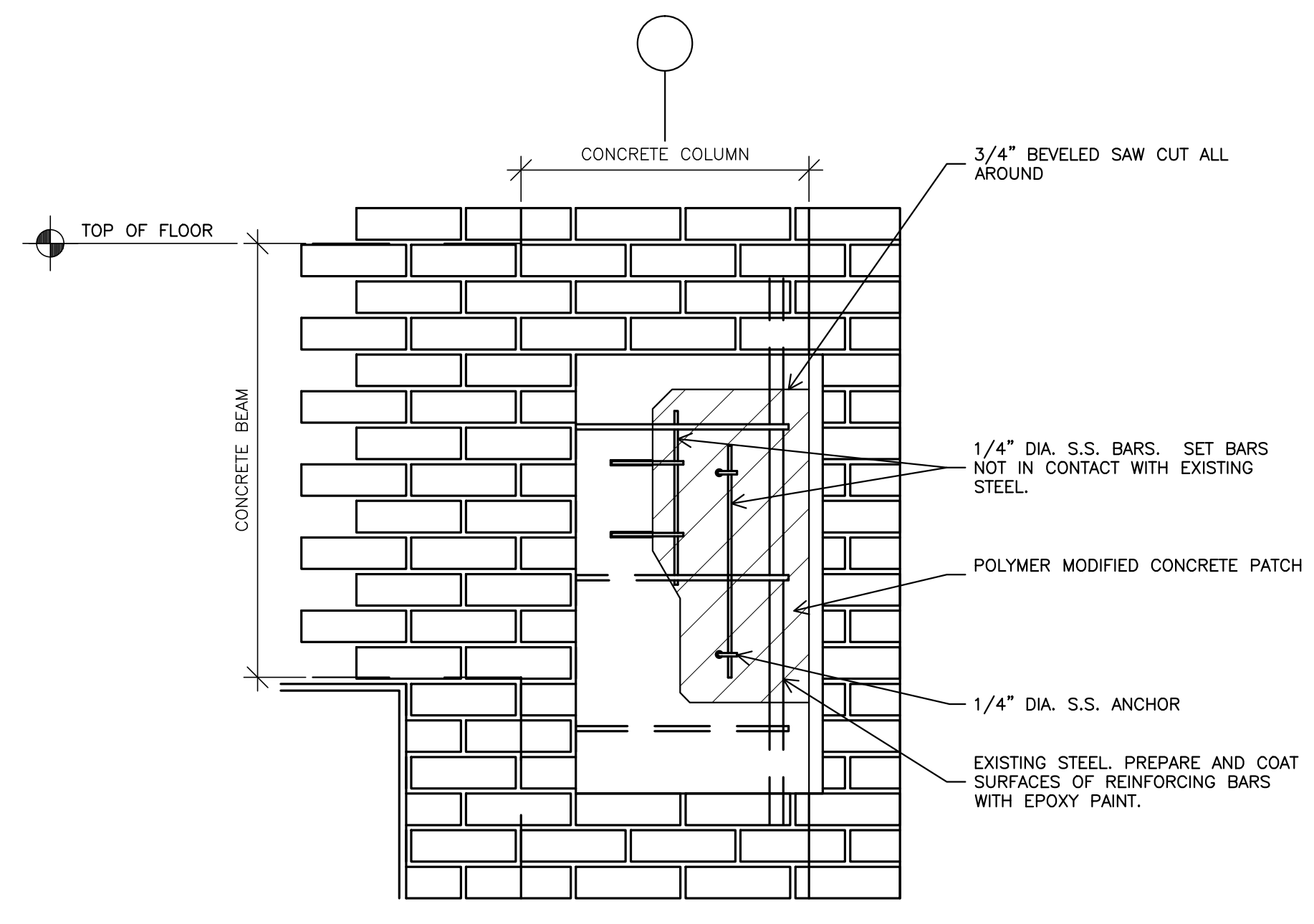
DRAWING NO.
R3-10
Dwg. 4 of 10

DEPARTMENT OF VETERANS AFFAIRS

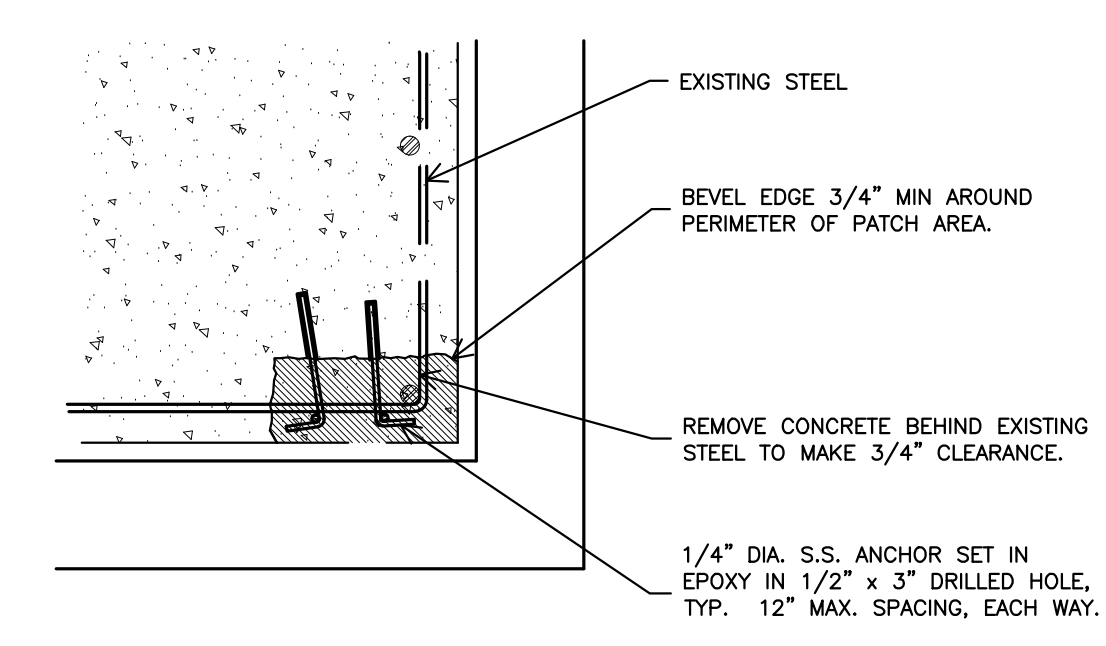
Scale bars and grid lines (A through F, 1 through 9) are provided along the left and top margins of the drawing.



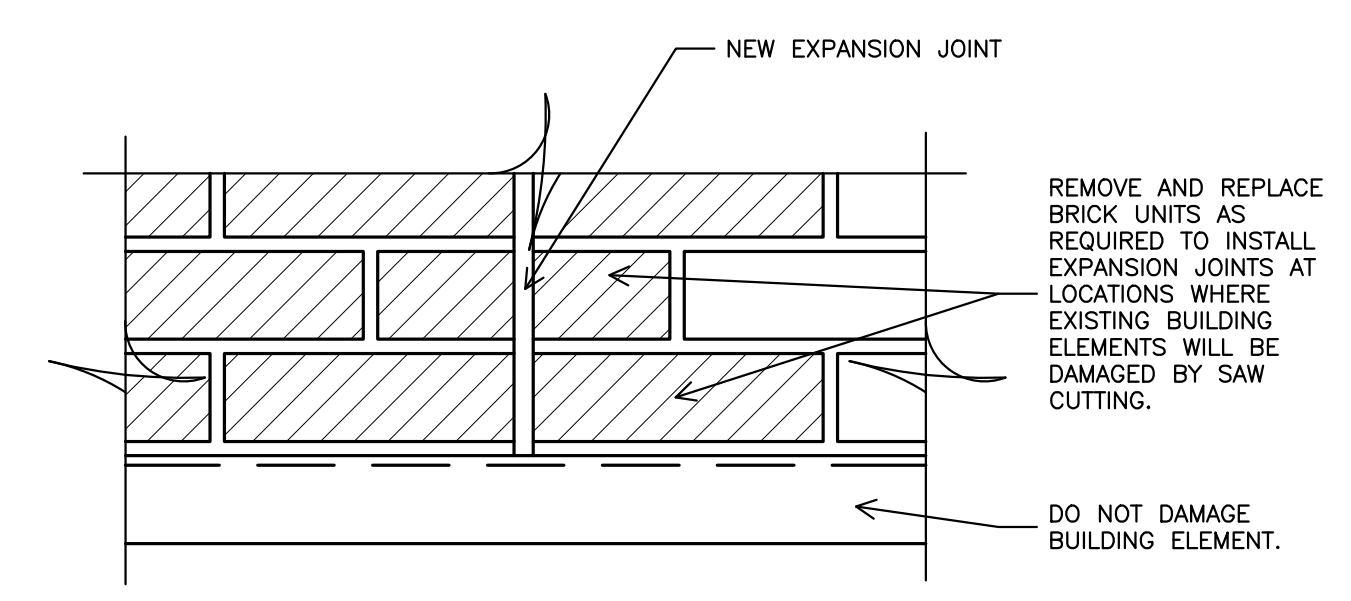
1 REMOVAL OF UNSOUND CONCRETE
1-1/2" = 1'-0"



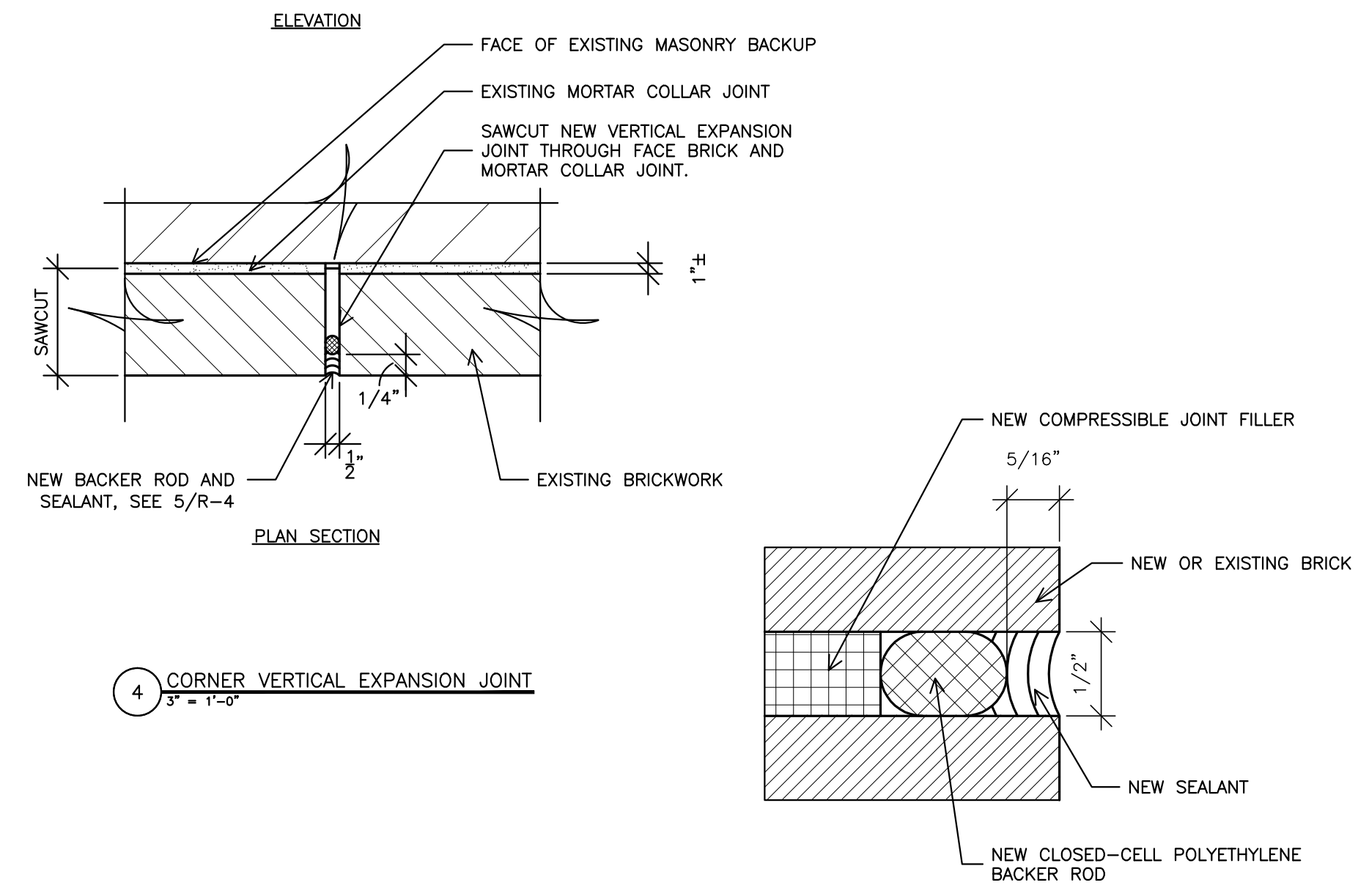
2 CONCRETE REPAIR - PARTIAL ELEVATION
1-1/2" = 1'-0"



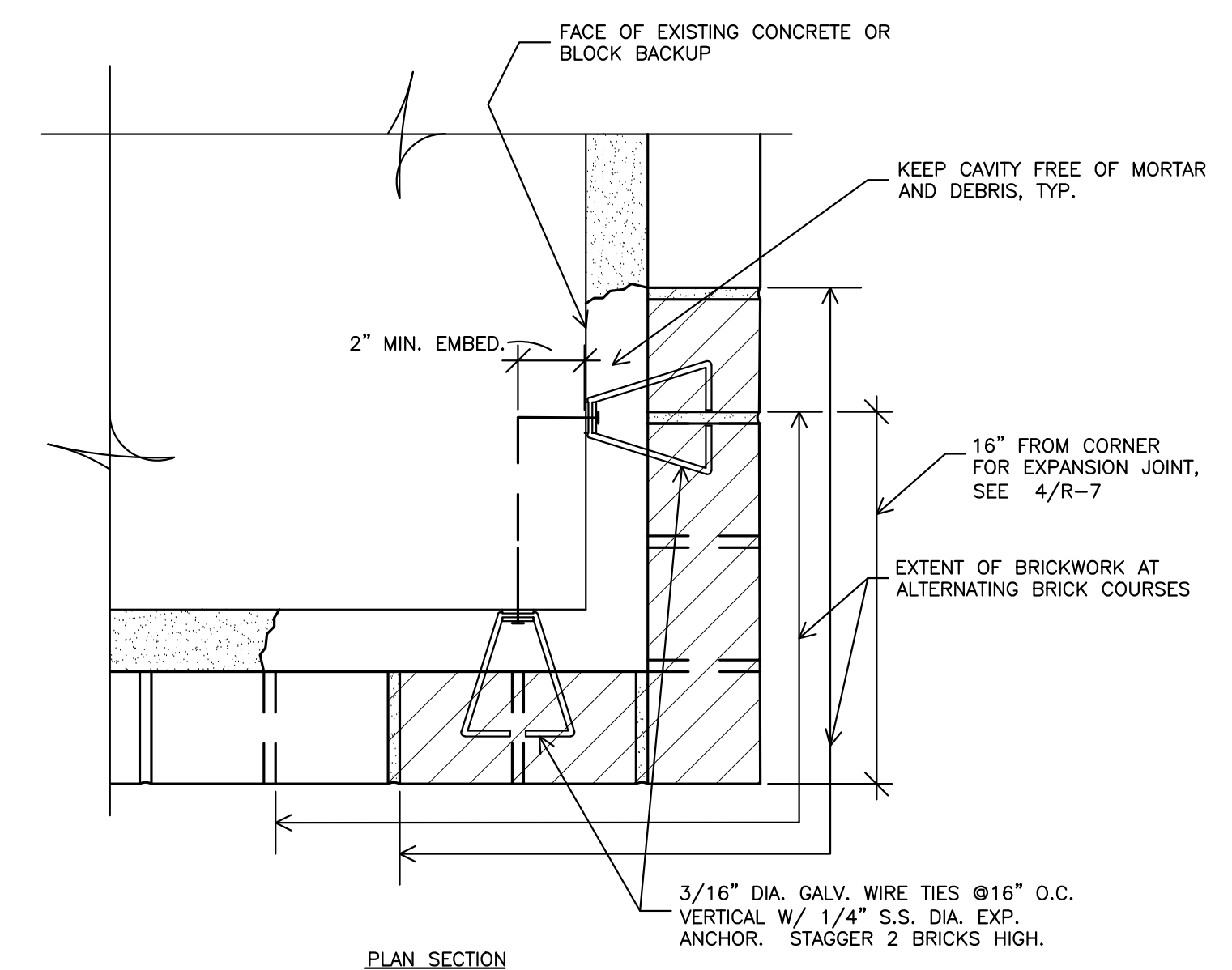
3 COLUMN CONCRETE REPAIR
1-1/2" = 1'-0"



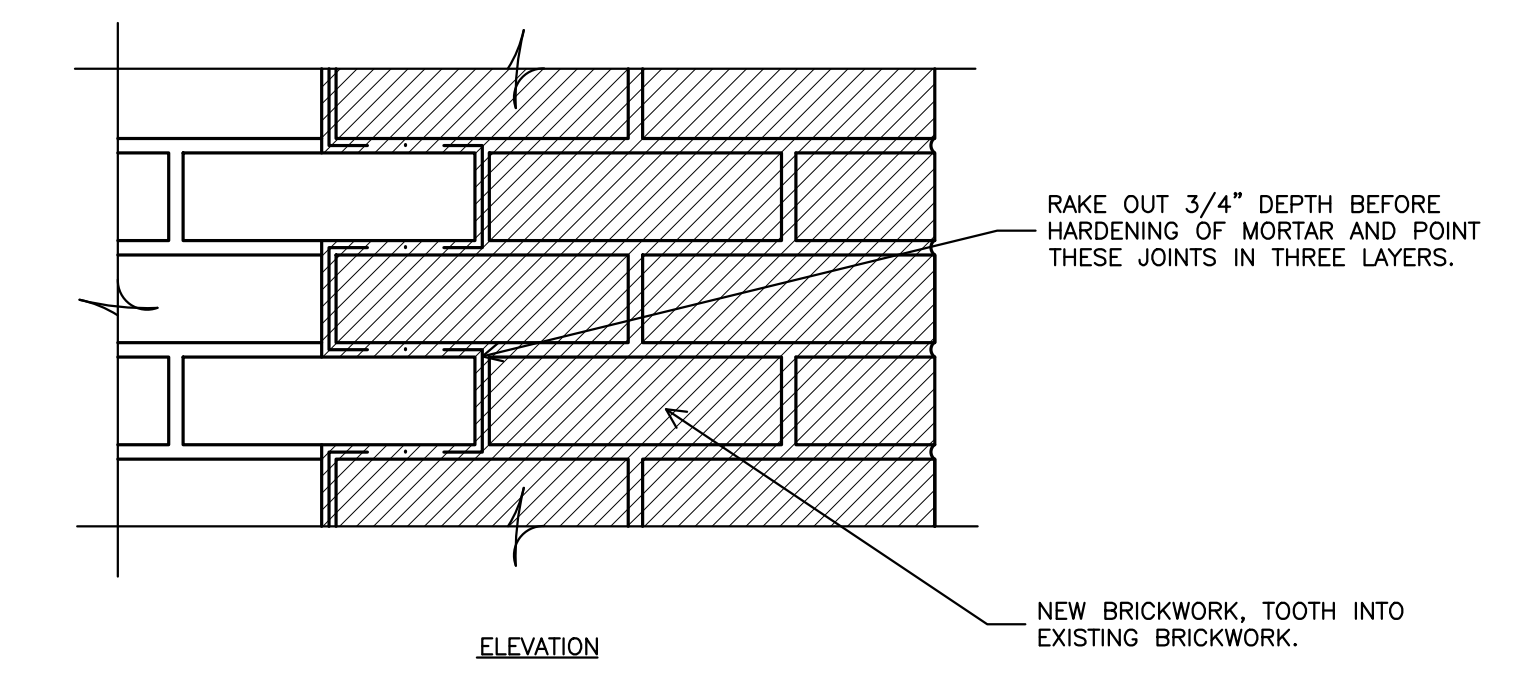
4 CORNER VERTICAL EXPANSION JOINT
3" = 1'-0"



5 BACKER ROD & SEALANT DETAIL
NONE



6 BRICKWORK AT CORNER
3" = 1'-0"



7 EXISTING SHELF ANGLE AT CORNER - REMOVAL
3" = 1'-0"

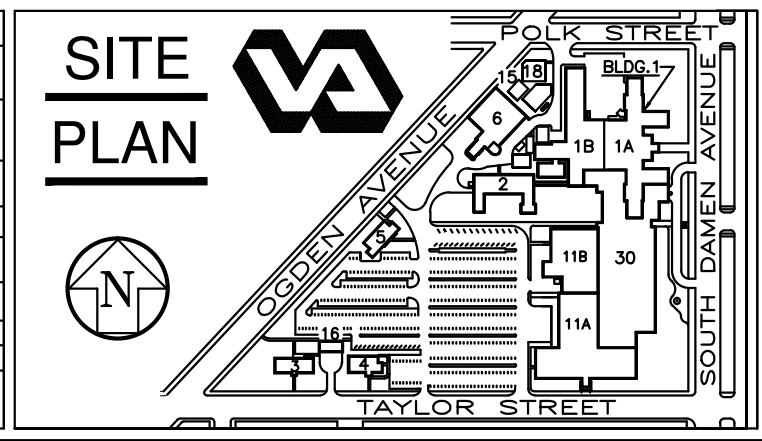
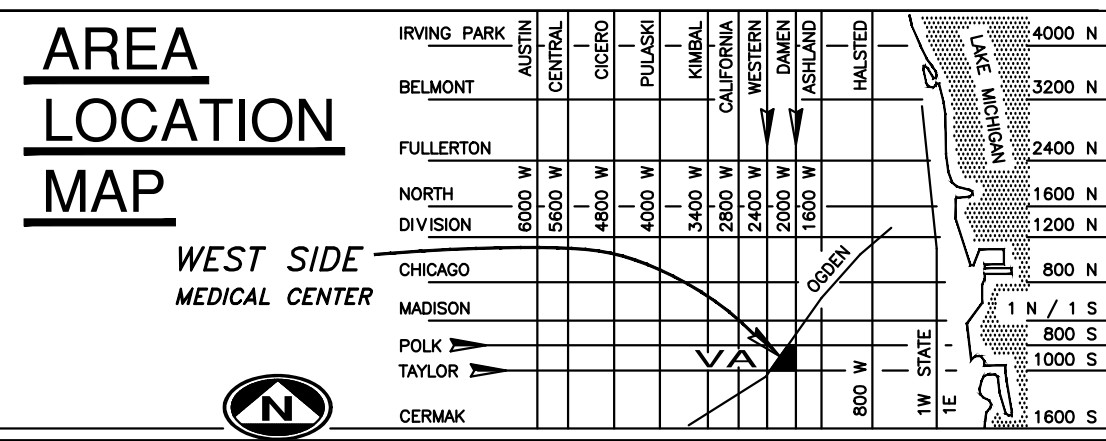
| | | |
|-----------|-----------------|----------|
| 9 | | |
| 8 | | |
| 7 | | |
| 6 | | |
| 5 | | |
| 4 | | |
| 3 | 100% COMPLETION | 7/31/13 |
| 2 | 95% COMPLETION | 1/21/09 |
| 1 | 25% COMPLETION | 11/06/08 |
| Revisions | | Date |

FREGA ASSOCIATES, LTD.
ARCHITECTS ENGINEERS PLANNERS
411 S. Wells Street, 5th Floor
Chicago, IL 60607

WJE ENGINEERS
ARCHITECTS
MATERIALS SCIENTISTS

Wiss, Janney, Elstner Associates, Inc.
330 Pfingsten Road
Northbrook, Illinois 60062
847.272.7400 tel | 847.291.5189 fax
www.wja.com

Headquarters & Laboratories: Northbrook, Illinois
Atlanta | Austin | Boston | Chicago | Cleveland | Dallas | Denver | Detroit
Honolulu | Houston | Los Angeles | Minneapolis | New Haven | New York
Princeton | San Francisco | Seattle | Washington, D.C.



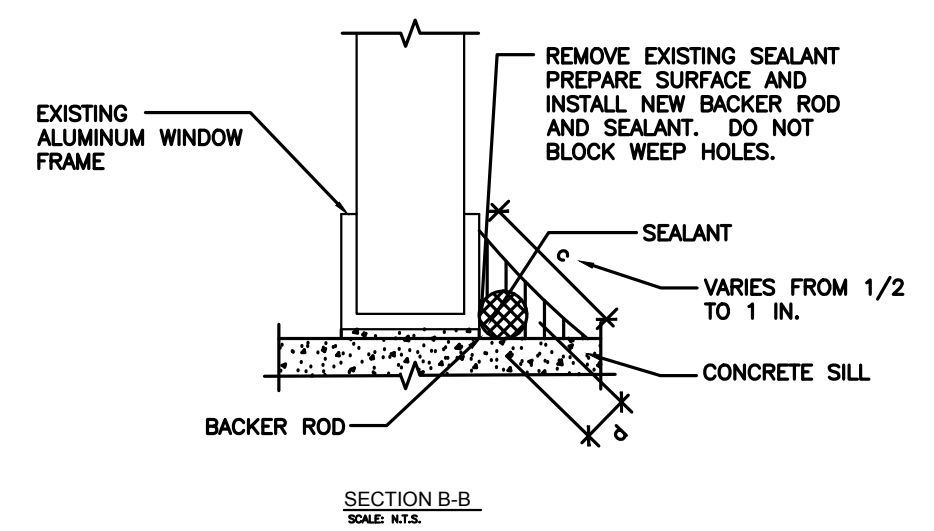
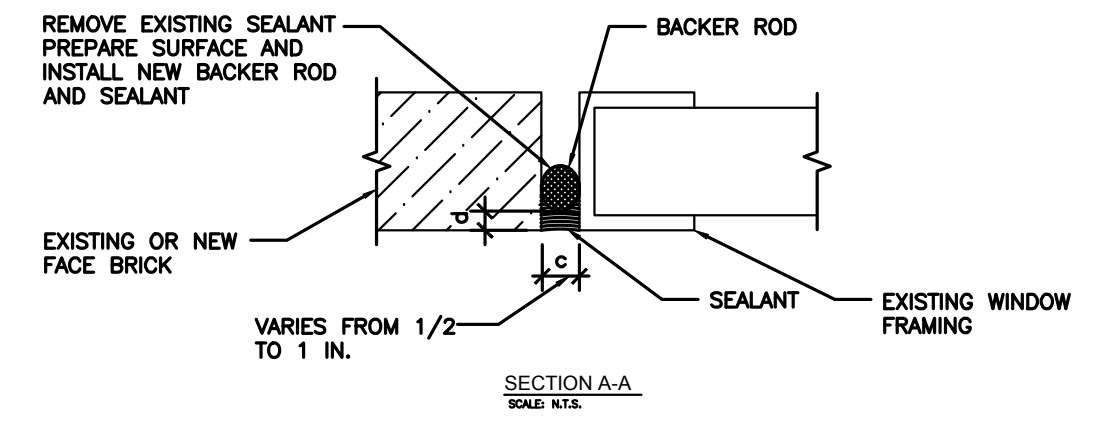
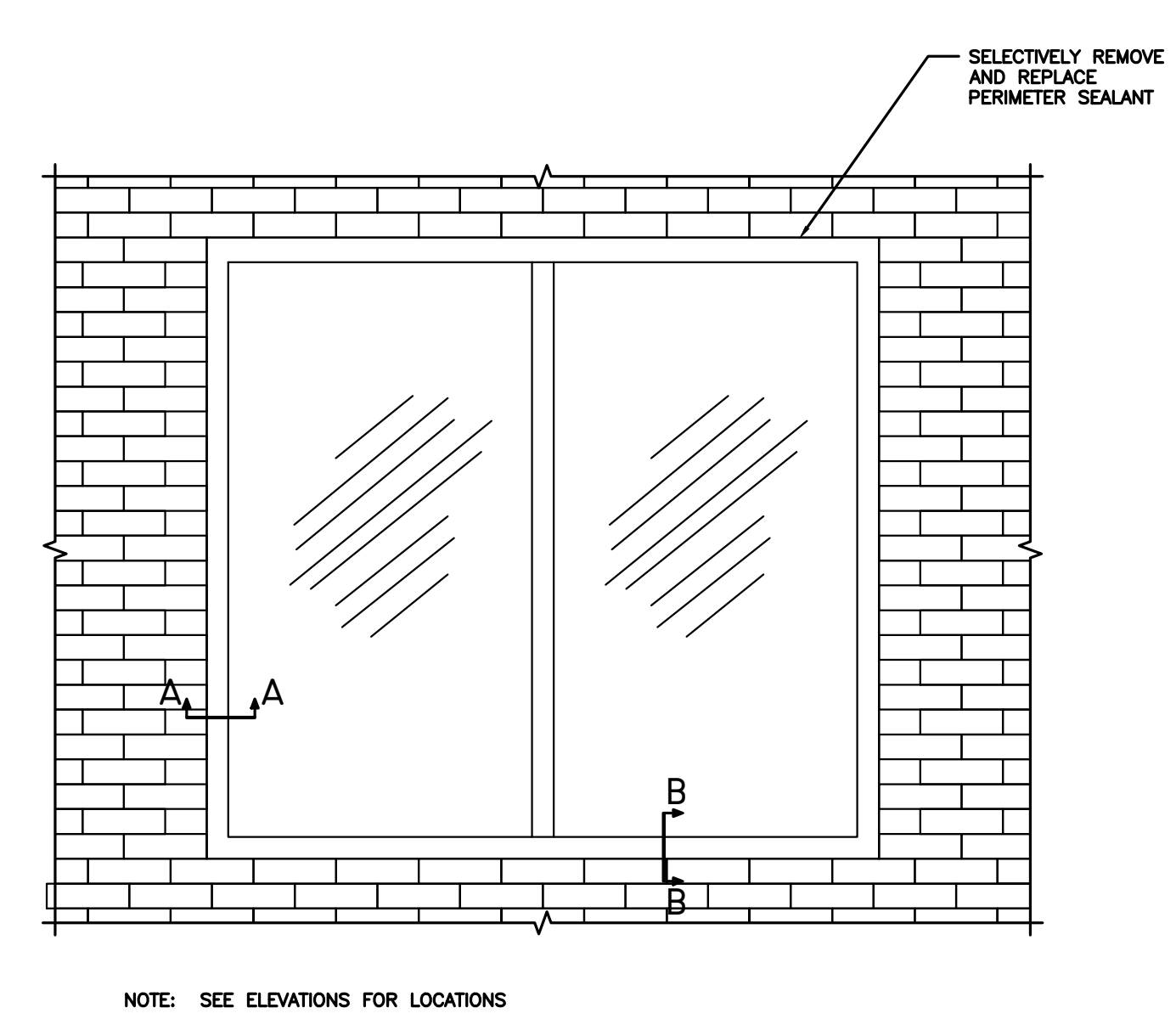
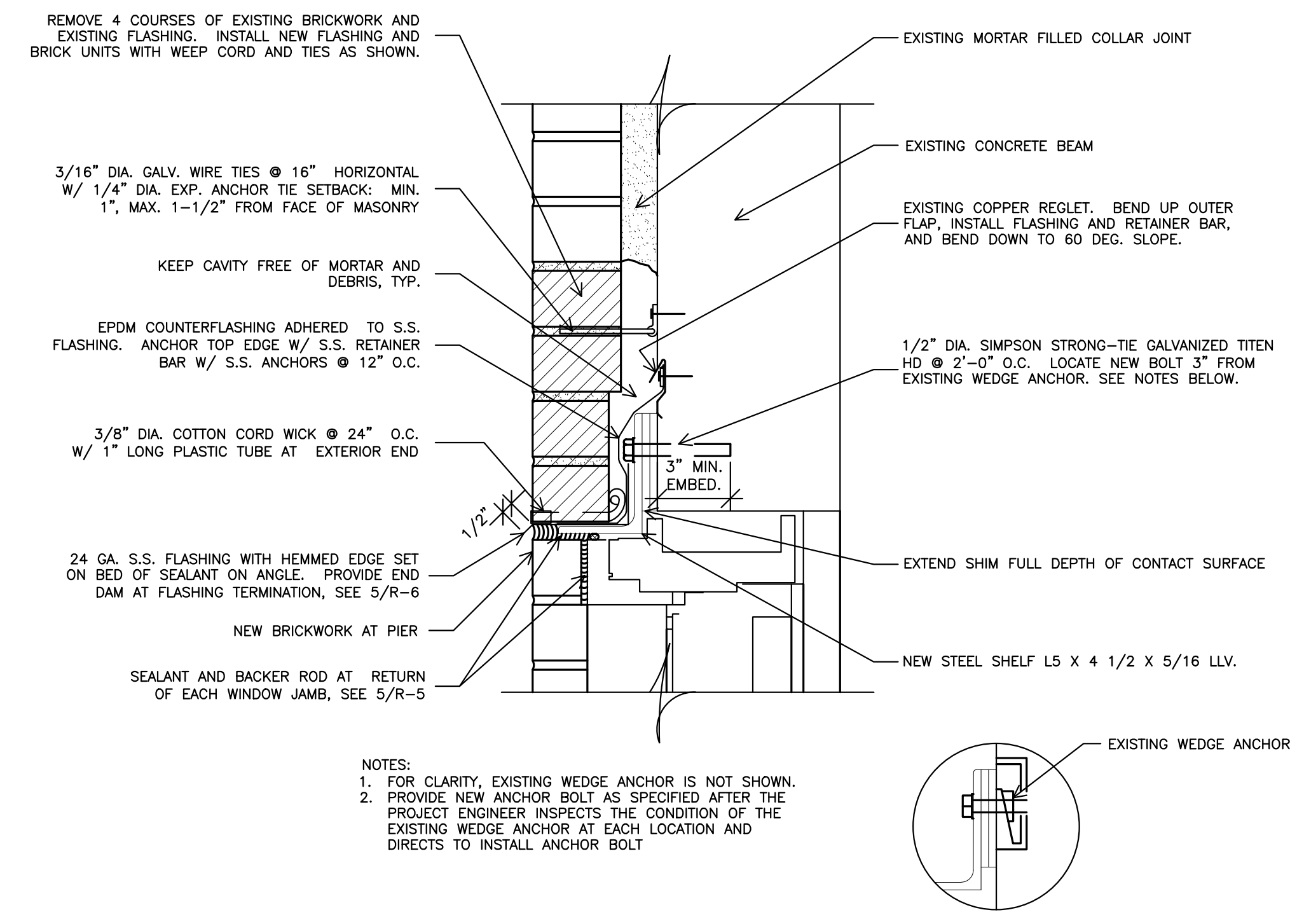
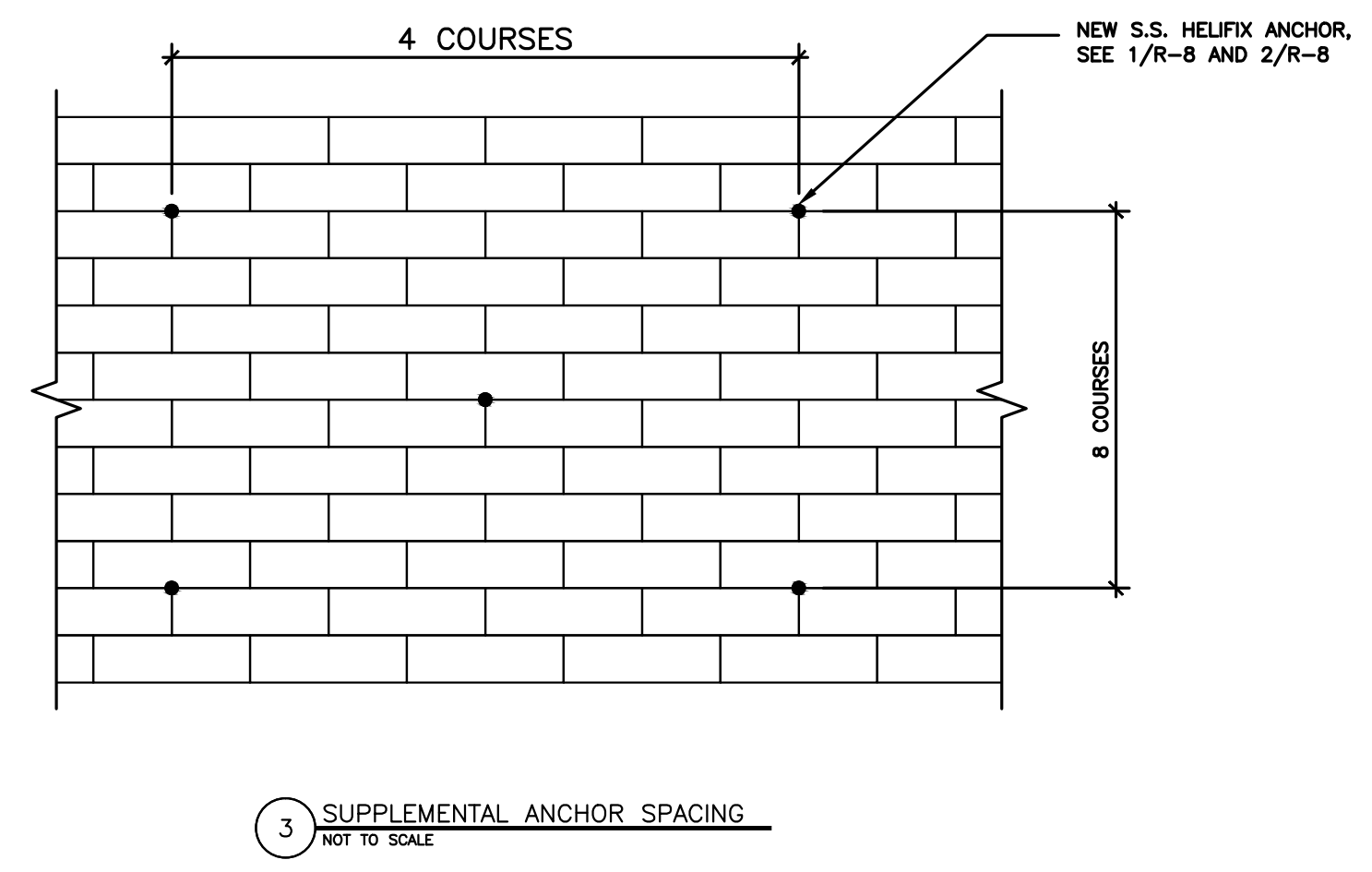
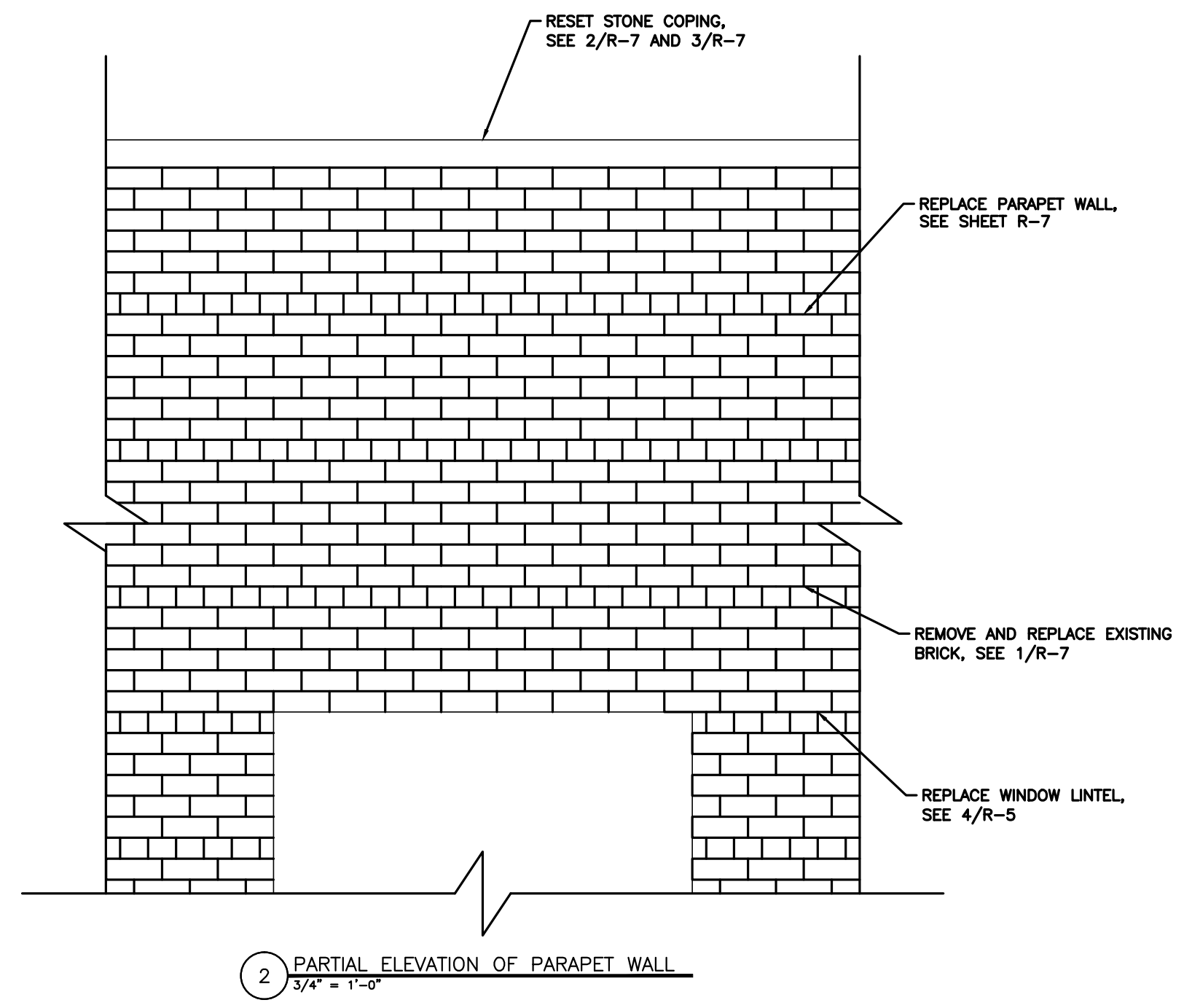
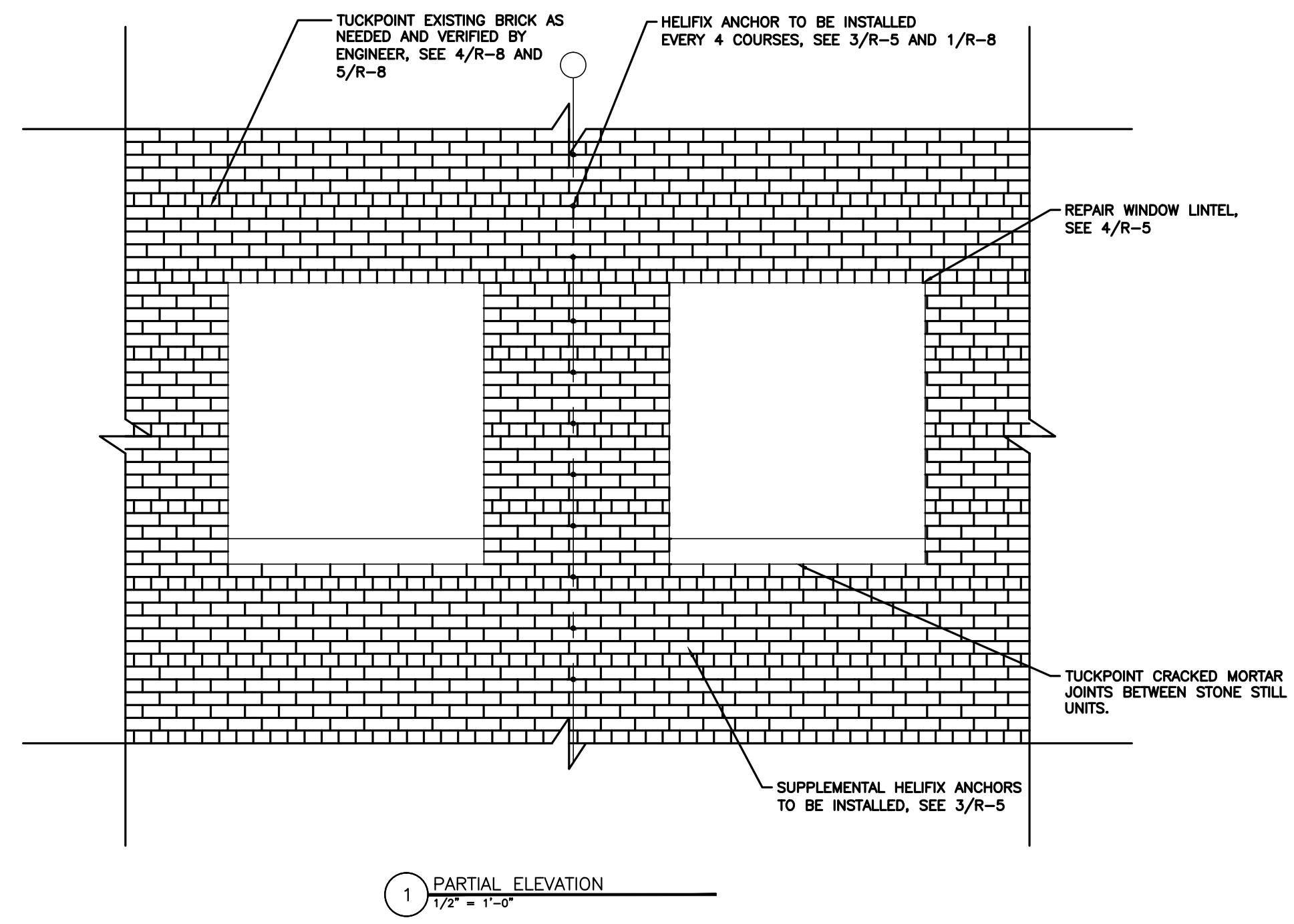
| | |
|---|------|
| Drawing Title | |
| CONCRETE REPAIRS AND EXPANSION JOINT | |
| Approved: Chief of Engineering | Date |
| Approved: Director | Date |

| | |
|---|------------|
| Project Title | |
| PHASE 10 V.A. CHICAGO Medical Center | |
| Building Number & Floor | Checked |
| BUILDING 1 ALL FLOORS | JEP |
| Location | Drawn |
| 820 S. DAMEN Ave. CHICAGO IL - 60612 | SBS |

| | |
|-------------|----------------|
| Date | 7/31/13 |
| Project No. | (CONSTRUCTION) |
| Drawing No. | R4-10 |
| Dwg. | 5 of 10 |

DEPARTMENT OF
VETERANS AFFAIRS

Scale bars and section markers (A, B, C, D, E, F) are located along the left margin of the drawing.



| JOINT WIDTH (c) | SEALANT DEPTH (d) | |
|-----------------|-------------------|-----|
| | MIN | MAX |
| 1/2 | 1/4 | 1/2 |
| 3/4 | 3/8 | 3/4 |
| 1 | 1/2 | 1 |

| Revisions | Date |
|-----------|-------------------------|
| 9 | |
| 8 | |
| 7 | |
| 6 | |
| 5 | |
| 4 | |
| 3 | 100% COMPLETION 7/31/13 |
| 2 | 95% COMPLETION 1/21/09 |
| 1 | 25% COMPLETION 11/06/08 |

FREGA ASSOCIATES, LTD.
ARCHITECTS ENGINEERS PLANNERS
411 S. Wells Street, 5th Floor
Chicago, IL 60607

WJE ENGINEERS
ARCHITECTS
MATERIALS SCIENTISTS

Wiss, Janney, Elstner Associates, Inc.
330 Pfingsten Road
Northbrook, Illinois 60062
847.272.7400 tel | 847.291.5189 fax
www.wja.com

Headquarters & Laboratories: Northbrook, Illinois
Atlanta | Austin | Boston | Chicago | Cleveland | Dallas | Denver | Detroit
Honolulu | Houston | Los Angeles | Minneapolis | New Haven | New York
Princeton | San Francisco | Seattle | Washington, D.C.

AREA LOCATION MAP

SITE PLAN

Drawing Title
BRICK AND SHELF ANGLE REPAIRS AT WINDOWS

Approved: *Chief of Engineering* Date
Approved: *Director* Date

Project Title
PHASE 10 V.A. CHICAGO Medical Center

Building Number & Floor
BUILDING 1 ALL FLOORS

Location
820 S. DAMEN Ave. CHICAGO IL - 60612

Checked: *JEP* Drawn: *SBS*

Date
7/31/13

Project No.
(CONSTRUCTION)

DRAWING NO.
R5-10

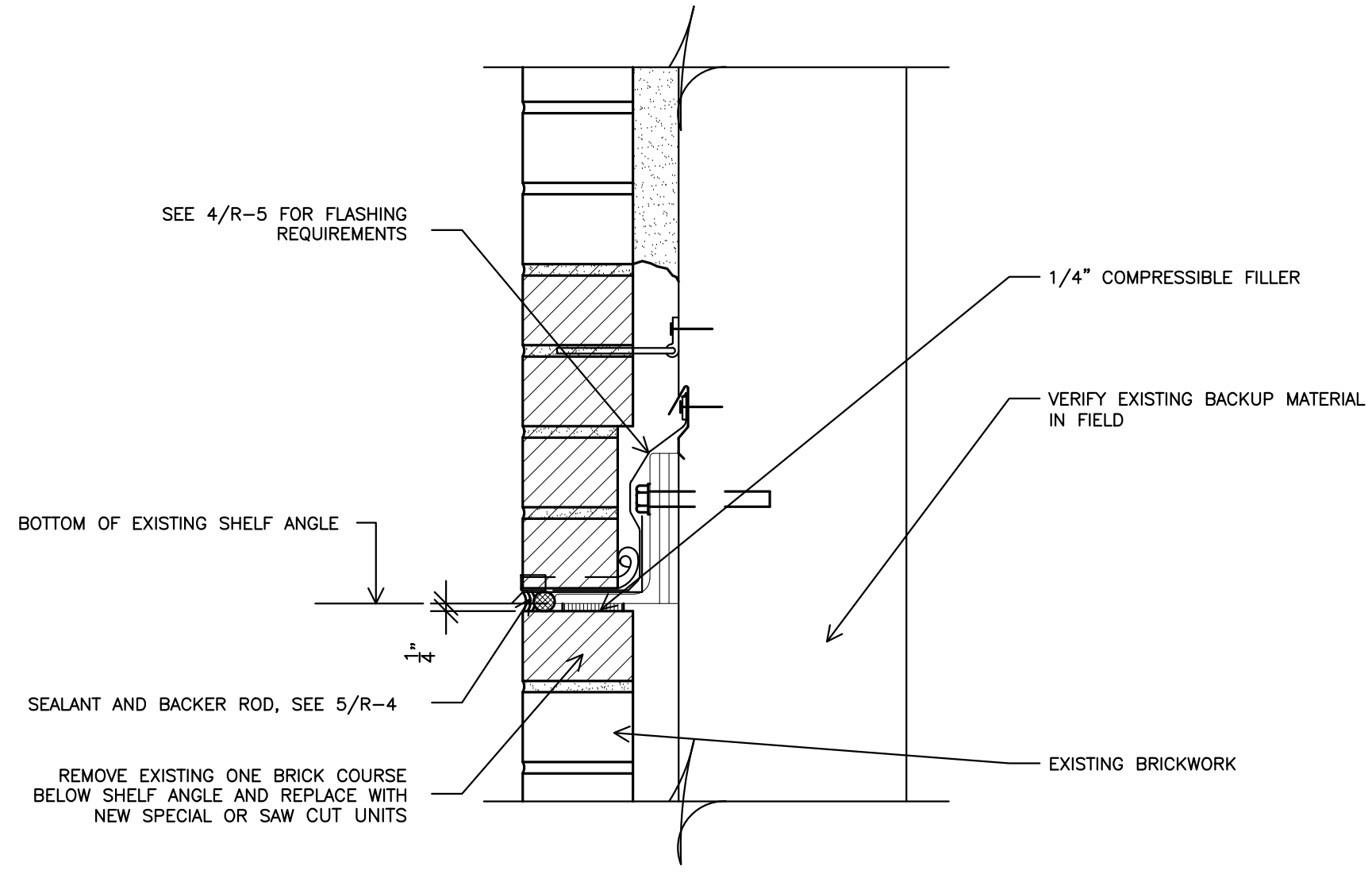
Dwg. 6 of 10

DEPARTMENT OF VETERANS AFFAIRS

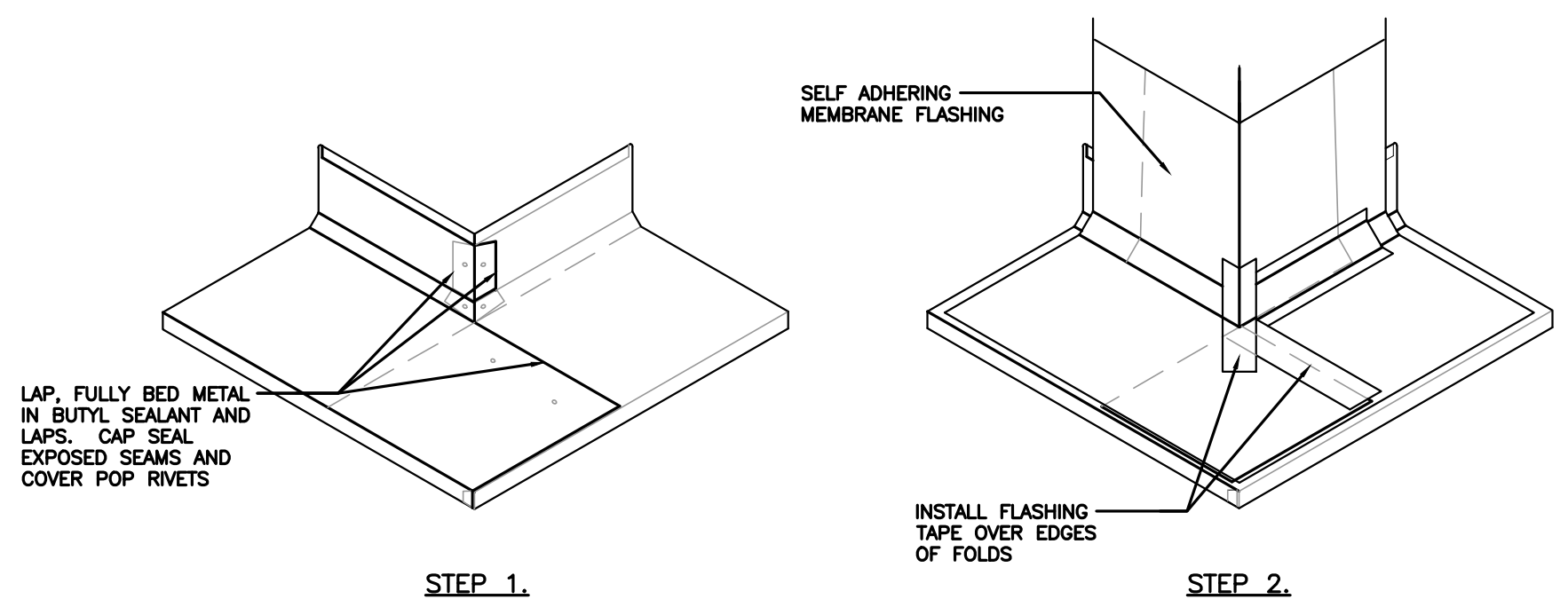
Scale bar: 1" = 1'-0"

Vertical scale: 1" = 1'-0"

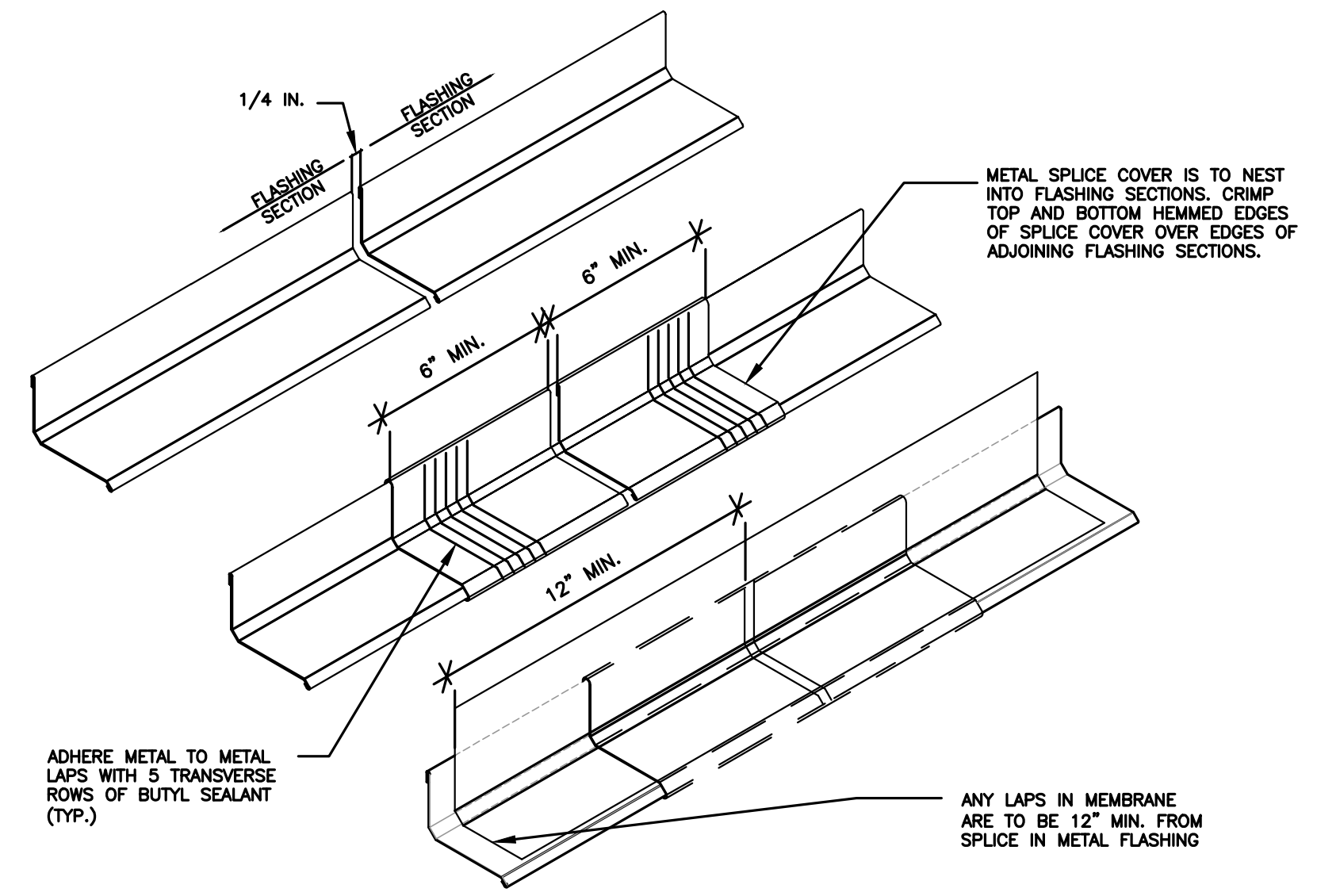
Horizontal scale: 1" = 1'-0"



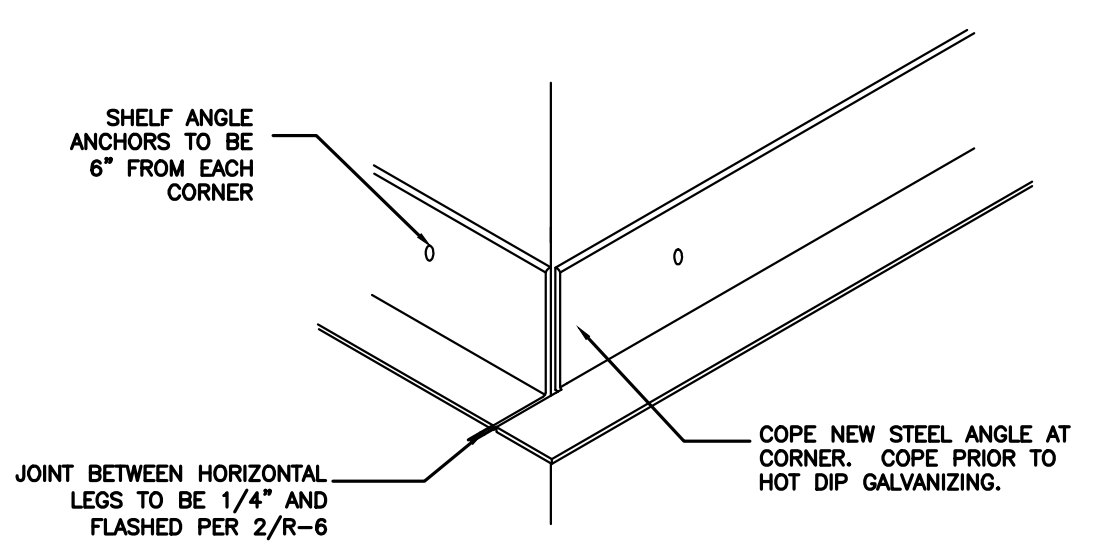
1 REPAIR AT SHELF ANGLE (AWAY FROM WINDOWS)
3" = 1'-0"



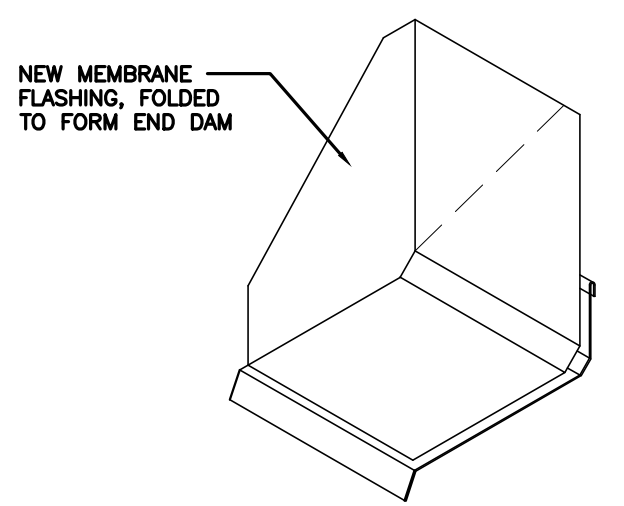
2 OUTSIDE CORNER FLASHING DETAIL
3" = 1'-0"



3 TYPICAL LAP IN FLASHING FOR SHELF ANGLES
3" = 1'-0"

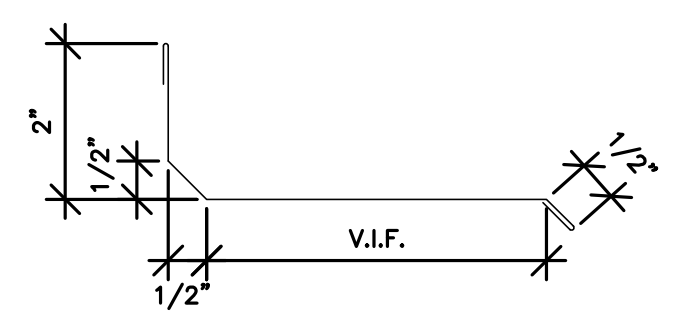


4 DETAIL AT SHELF ANGLE REPLACEMENT
NOT TO SCALE



NOTE: SHEET METAL AND MEMBRANE FLASHING SHALL BE CONTINUOUS AND COMPLETELY SEALED AT ALL INSIDE AND OUTSIDE CORNERS

5 MEMBRANE FLASHING END DAM
NOT TO SCALE



6 TYPICAL FLASHING PROFILE
NOT TO SCALE

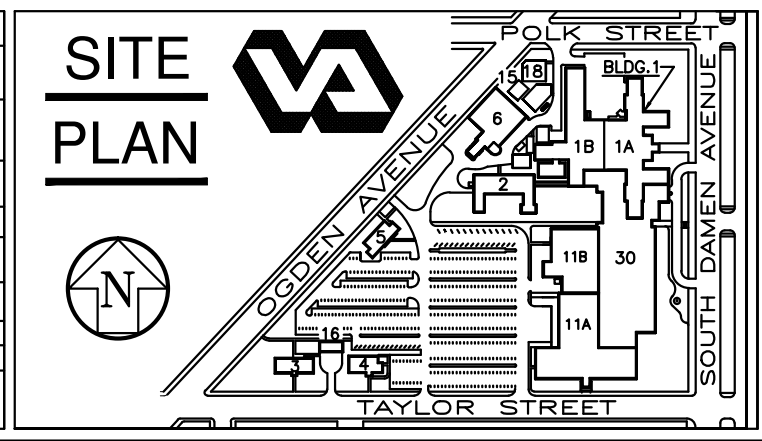
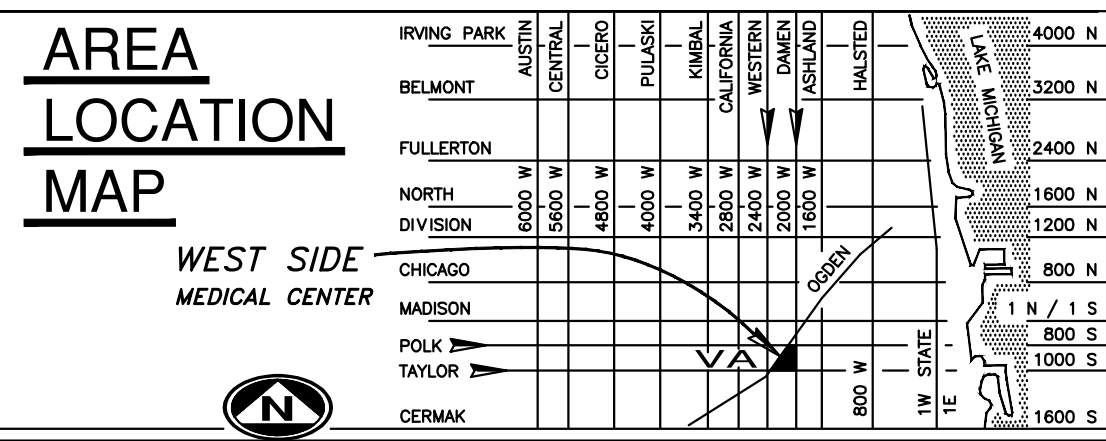
| Revisions | Date |
|-----------|-------------------------|
| 9 | |
| 8 | |
| 7 | |
| 6 | |
| 5 | |
| 4 | |
| 3 | 100% COMPLETION 7/31/13 |
| 2 | 95% COMPLETION 1/21/09 |
| 1 | 25% COMPLETION 11/06/08 |

FREGA ASSOCIATES, LTD.
ARCHITECTS ENGINEERS PLANNERS
411 S. Wells Street, 5th Floor
Chicago, IL 60607

WJE ENGINEERS
ARCHITECTS
MATERIALS SCIENTISTS

Wiss, Janney, Elstner Associates, Inc.
330 Pfingsten Road
Northbrook, Illinois 60062
847.272.7400 tel | 847.291.5189 fax
www.wja.com

Headquarters & Laboratories: Northbrook, Illinois
Atlanta | Austin | Boston | Chicago | Cleveland | Dallas | Denver | Detroit
Honolulu | Houston | Los Angeles | Minneapolis | New Haven | New York
Princeton | San Francisco | Seattle | Washington, D.C.

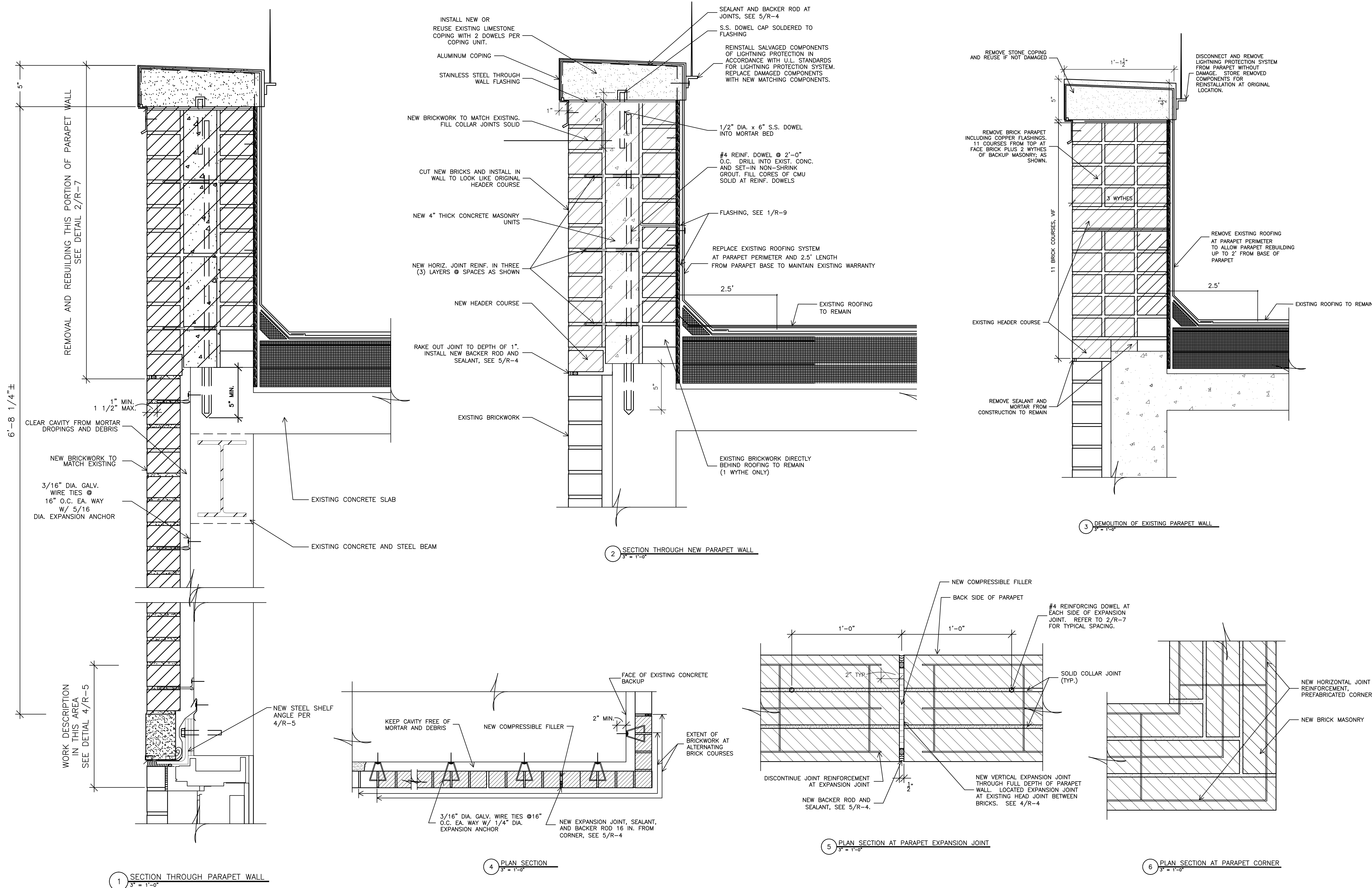


| | |
|--|------|
| Drawing Title | |
| SHELF ANGLE REPAIRS AWAY FROM WINDOWS | |
| Approved: Chief of Engineering | Date |
| Approved: Director | Date |

| | | | |
|---|---|----------------|--------------|
| Project Title | | Date | |
| PHASE 10 V.A. CHICAGO Medical Center | | 7/31/13 | |
| Project No. | | (CONSTRUCTION) | |
| Building Number & Floor | Checked | Drawn | DRAWING NO. |
| BUILDING 1 ALL FLOORS | JEP | SBS | R6-10 |
| Location | 820 S. DAMEN Ave. CHICAGO IL - 60612 | | Dwg. 7 of 10 |

DEPARTMENT OF
VETERANS AFFAIRS

three inches = one foot
one and one-half inches = one foot
one inch = one foot
three-quarters inch = one foot
one-half inch = one foot
three-eighths inch = one foot
one-quarter inch = one foot
one-eighth inch = one foot



| | | |
|-----------|-----------------|----------|
| 9 | | |
| 8 | | |
| 7 | | |
| 6 | | |
| 5 | | |
| 4 | | |
| 3 | 100% COMPLETION | 7/31/13 |
| 2 | 95% COMPLETION | 1/21/09 |
| 1 | 25% COMPLETION | 11/06/08 |
| Revisions | | Date |

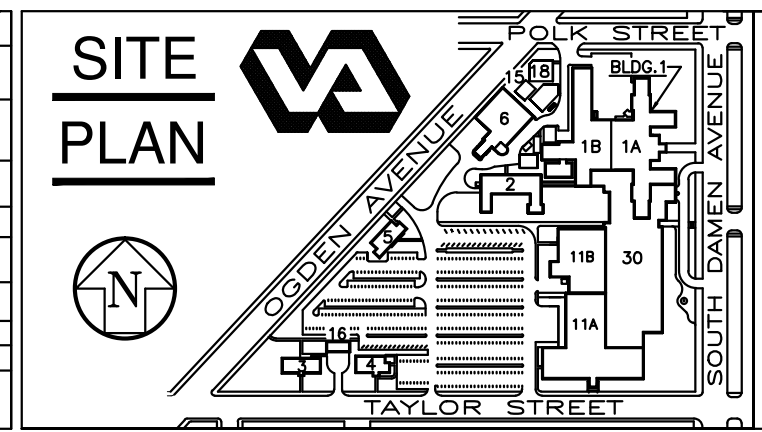
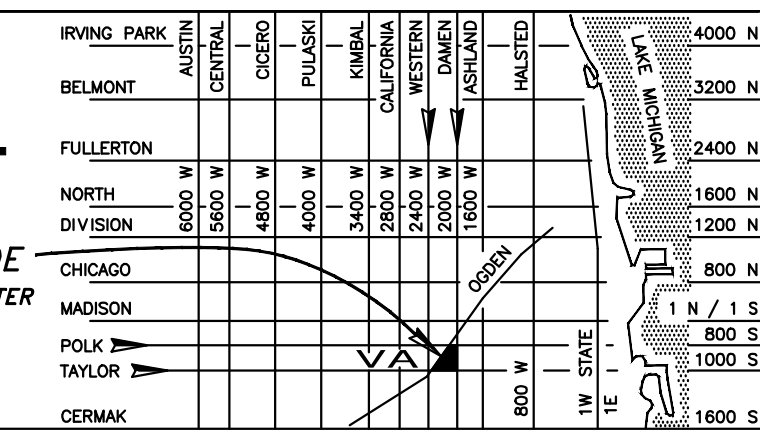
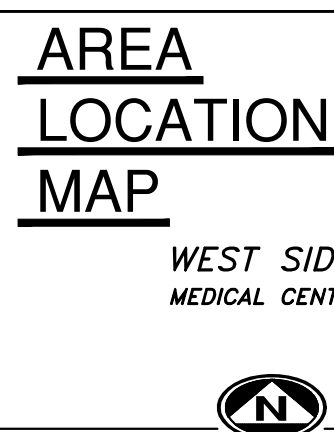


FREGA ASSOCIATES, LTD.
ARCHITECTS ENGINEERS PLANNERS
411 S. Wells Street, 5th Floor
Chicago, IL 60607

ENGINEERS
ARCHITECTS
MATERIALS SCIENTISTS

Wiss, Janney, Elstner Associates, Inc.
330 Pfingsten Road
Northbrook, Illinois 60062
847.272.7400 tel | 847.291.5189 fax
www.wja.com

Headquarters & Laboratories: Northbrook, Illinois
Atlanta | Austin | Boston | Chicago | Cleveland | Dallas | Denver | Detroit
Honolulu | Houston | Los Angeles | Minneapolis | New Haven | New York
Princeton | San Francisco | Seattle | Washington, D.C.

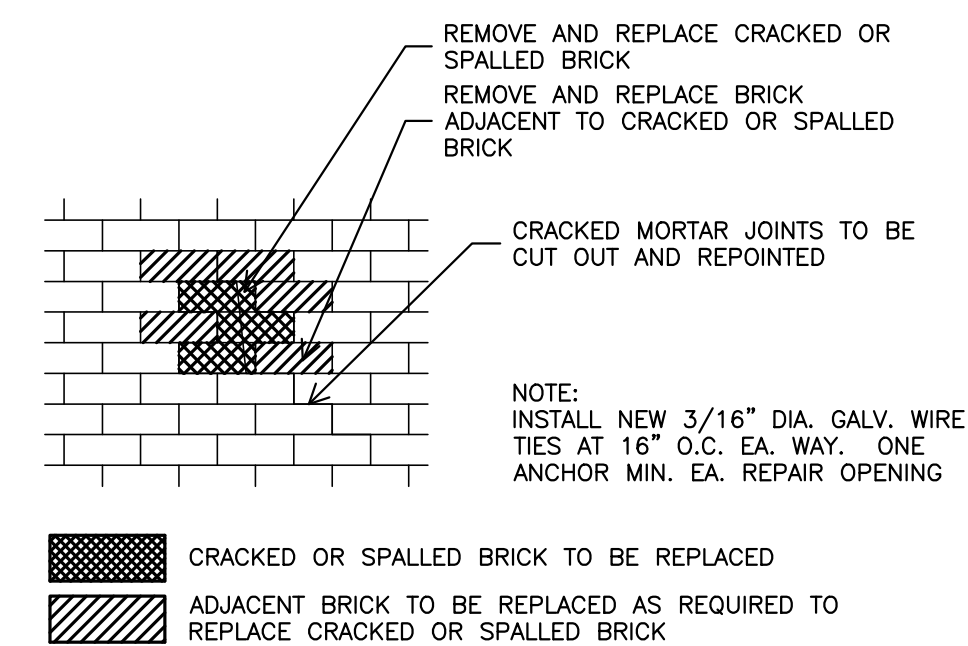
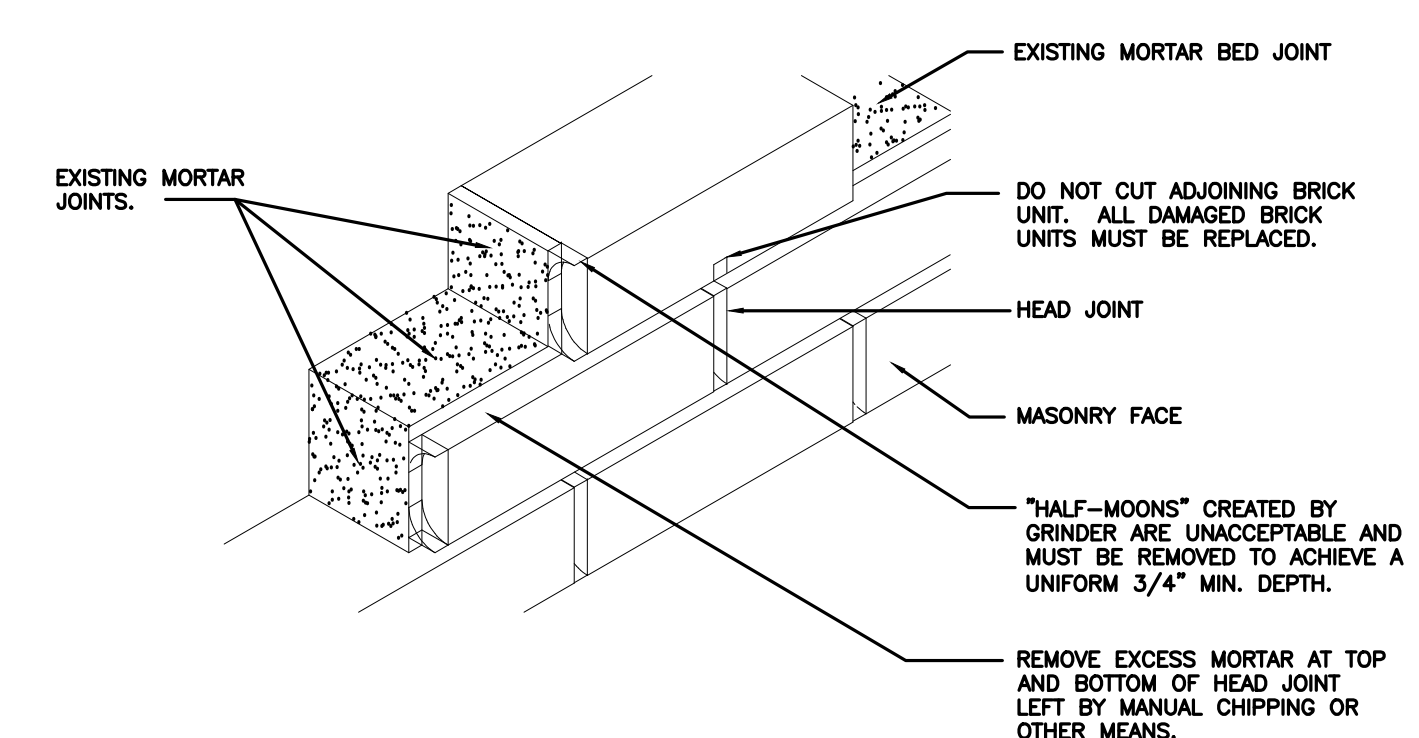
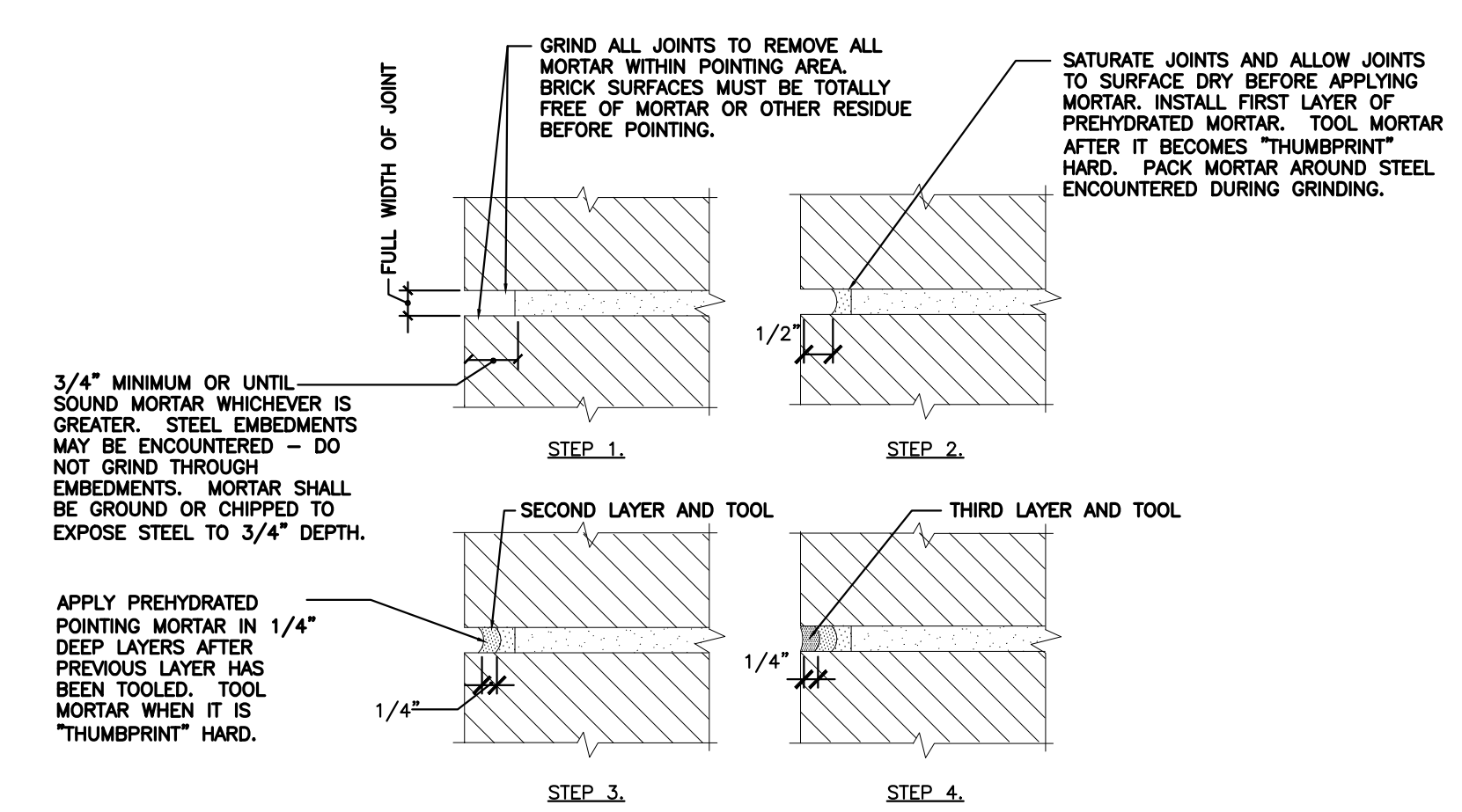
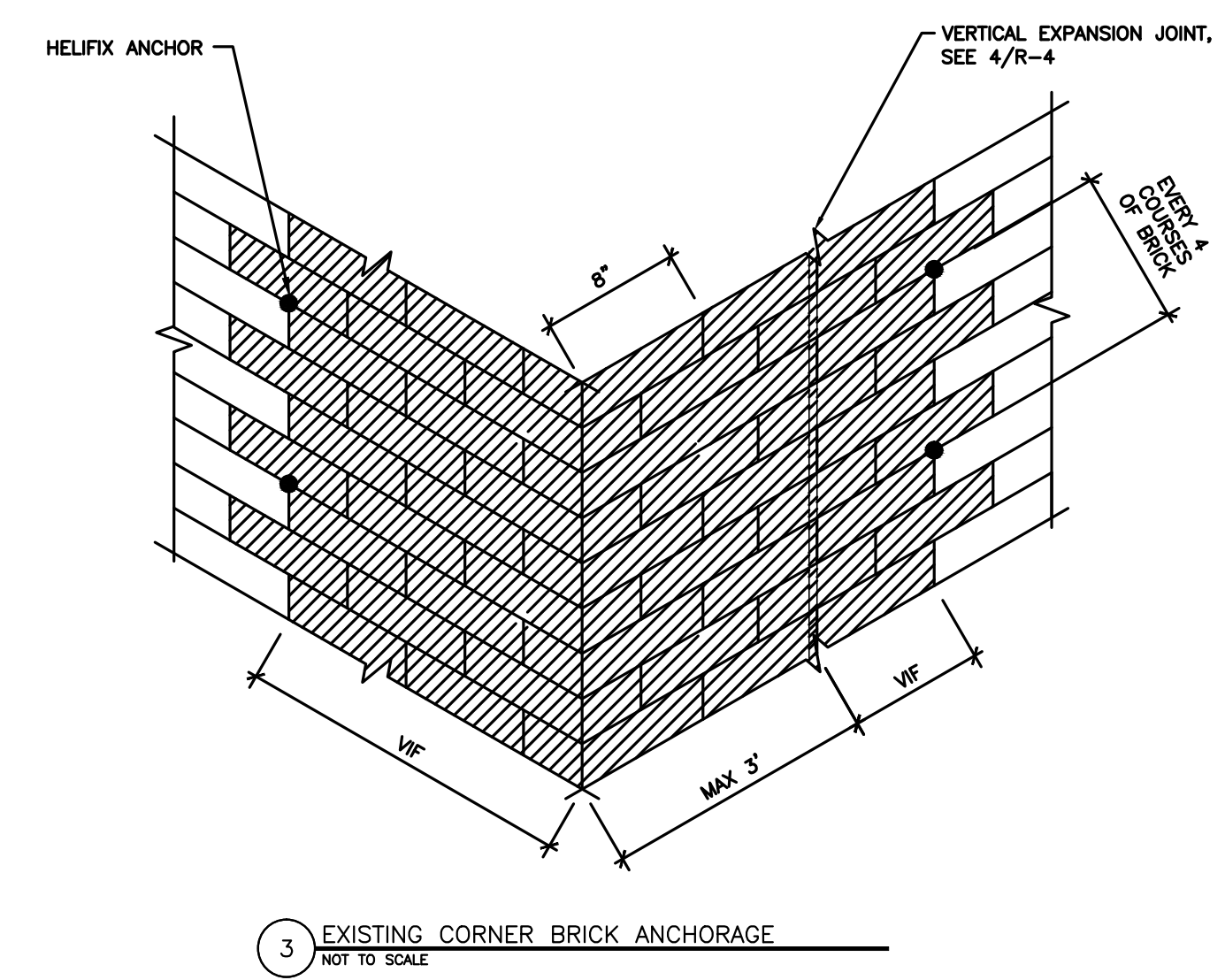
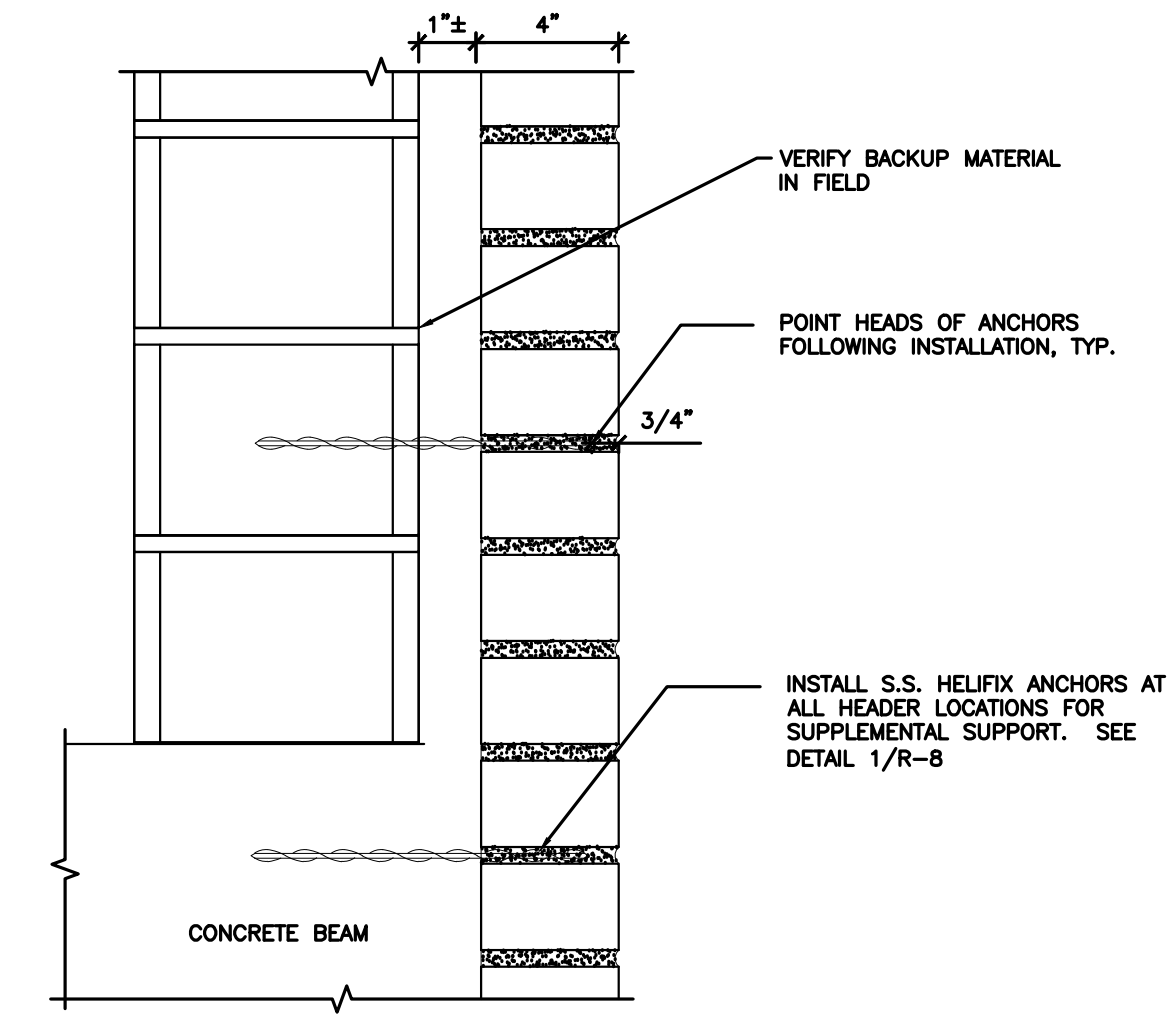
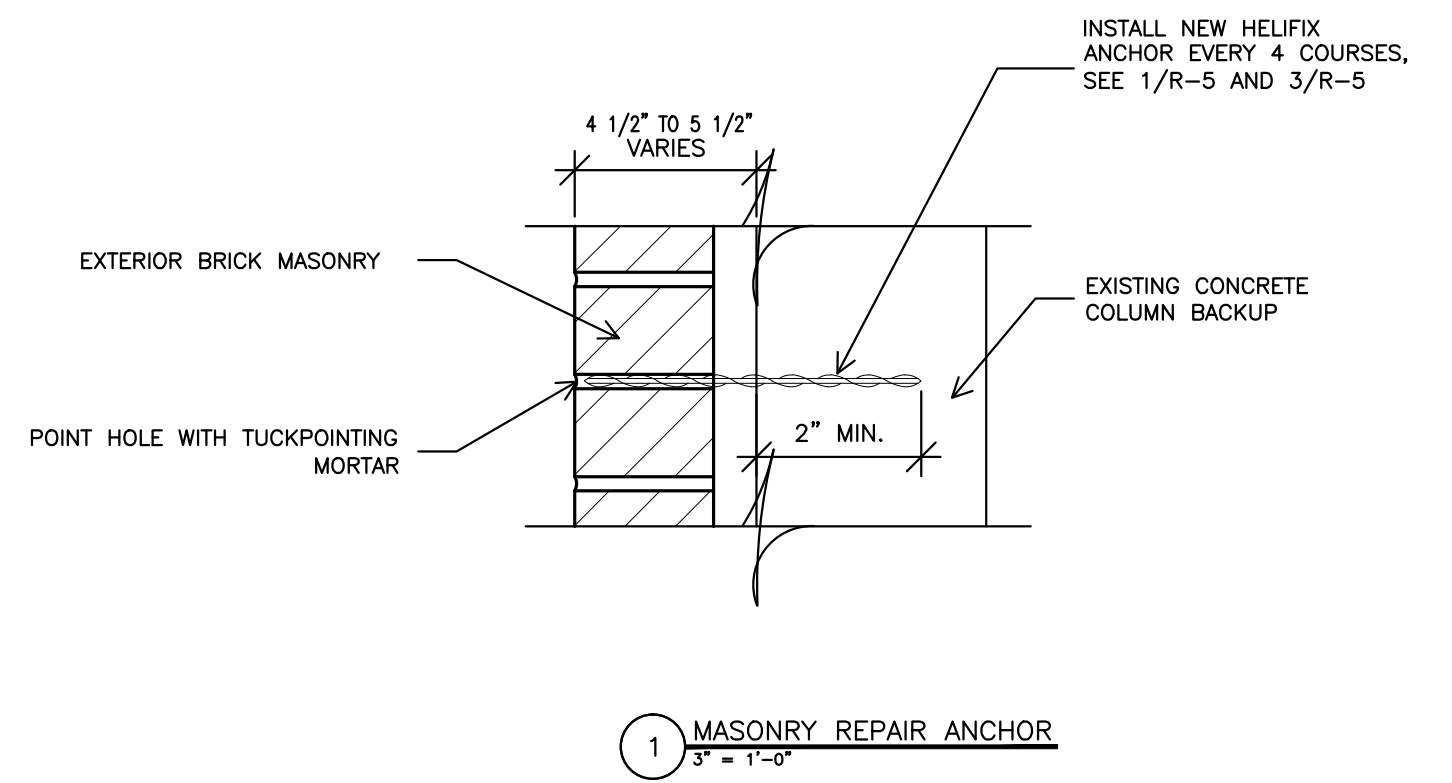


| | |
|-------------------------|--|
| Project Title | PHASE 10 V.A. CHICAGO Medical Center |
| Building Number & Floor | BUILDING 1 ALL FLOORS |
| Location | 820 S. DAMEN Ave. CHICAGO IL - 60612 |

| | |
|-------------|----------------|
| Date | 7/31/13 |
| Project No. | (CONSTRUCTION) |
| DRAWING NO. | R7-10 |
| Dwg. | 8 of 10 |

DEPARTMENT OF
VETERANS AFFAIRS

Scale bars and graphical indicators for drawing dimensions and units.



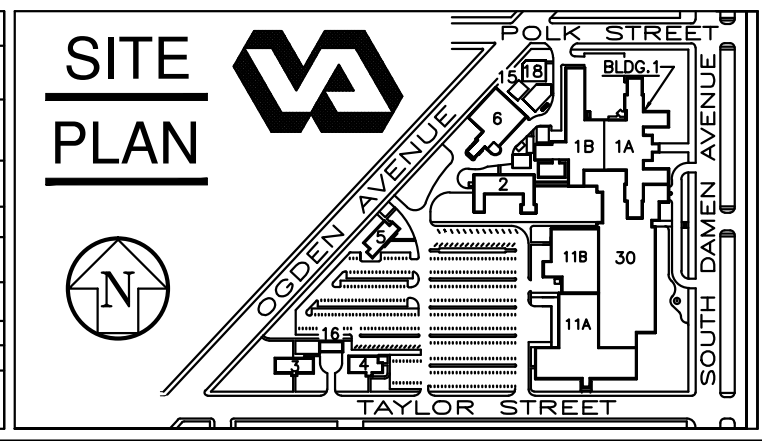
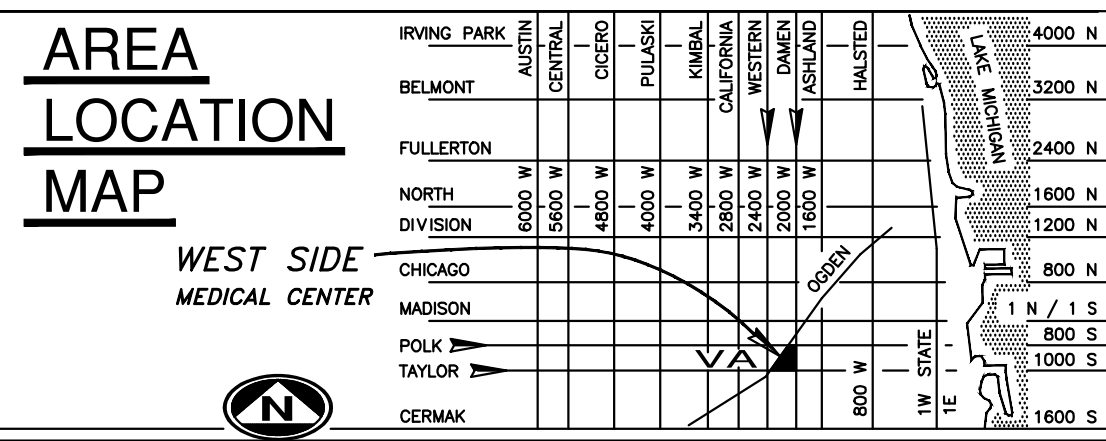
| Revisions | Date |
|-----------|-------------------------|
| 9 | |
| 8 | |
| 7 | |
| 6 | |
| 5 | |
| 4 | |
| 3 | 100% COMPLETION 7/31/13 |
| 2 | 95% COMPLETION 1/21/09 |
| 1 | 25% COMPLETION 11/06/08 |

FREGA ASSOCIATES, LTD.
ARCHITECTS ENGINEERS PLANNERS
411 S. Wells Street, 5th Floor
Chicago, IL 60607

WJE ENGINEERS
ARCHITECTS
MATERIALS SCIENTISTS

Wiss, Janney, Elstner Associates, Inc.
330 Pfingsten Road
Northbrook, Illinois 60062
847.272.7400 tel | 847.291.5189 fax
www.wja.com

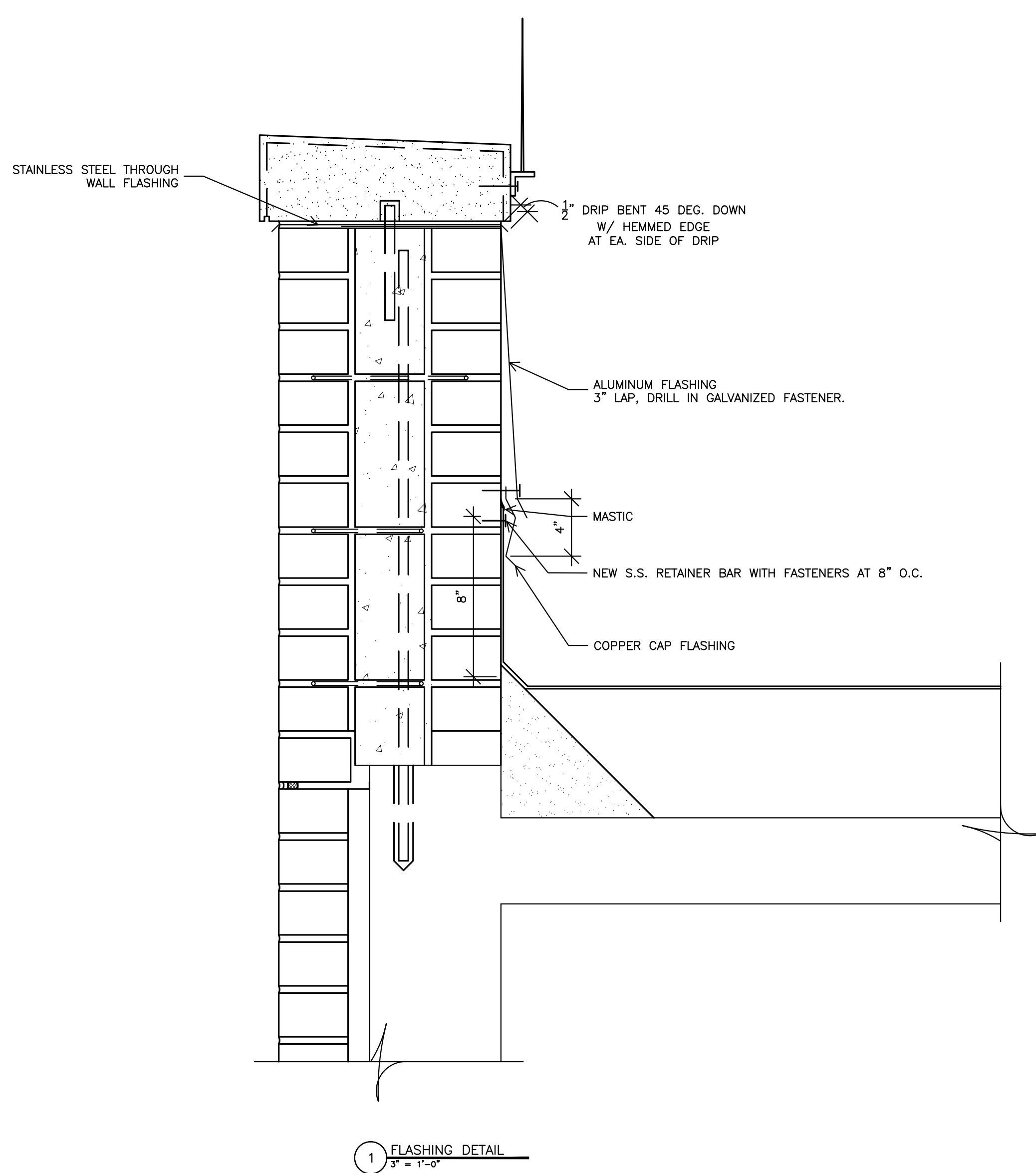
Headquarters & Laboratories: Northbrook, Illinois
Atlanta | Austin | Boston | Chicago | Cleveland | Dallas | Denver | Detroit
Honolulu | Houston | Los Angeles | Minneapolis | New Haven | New York
Princeton | San Francisco | Seattle | Washington, D.C.



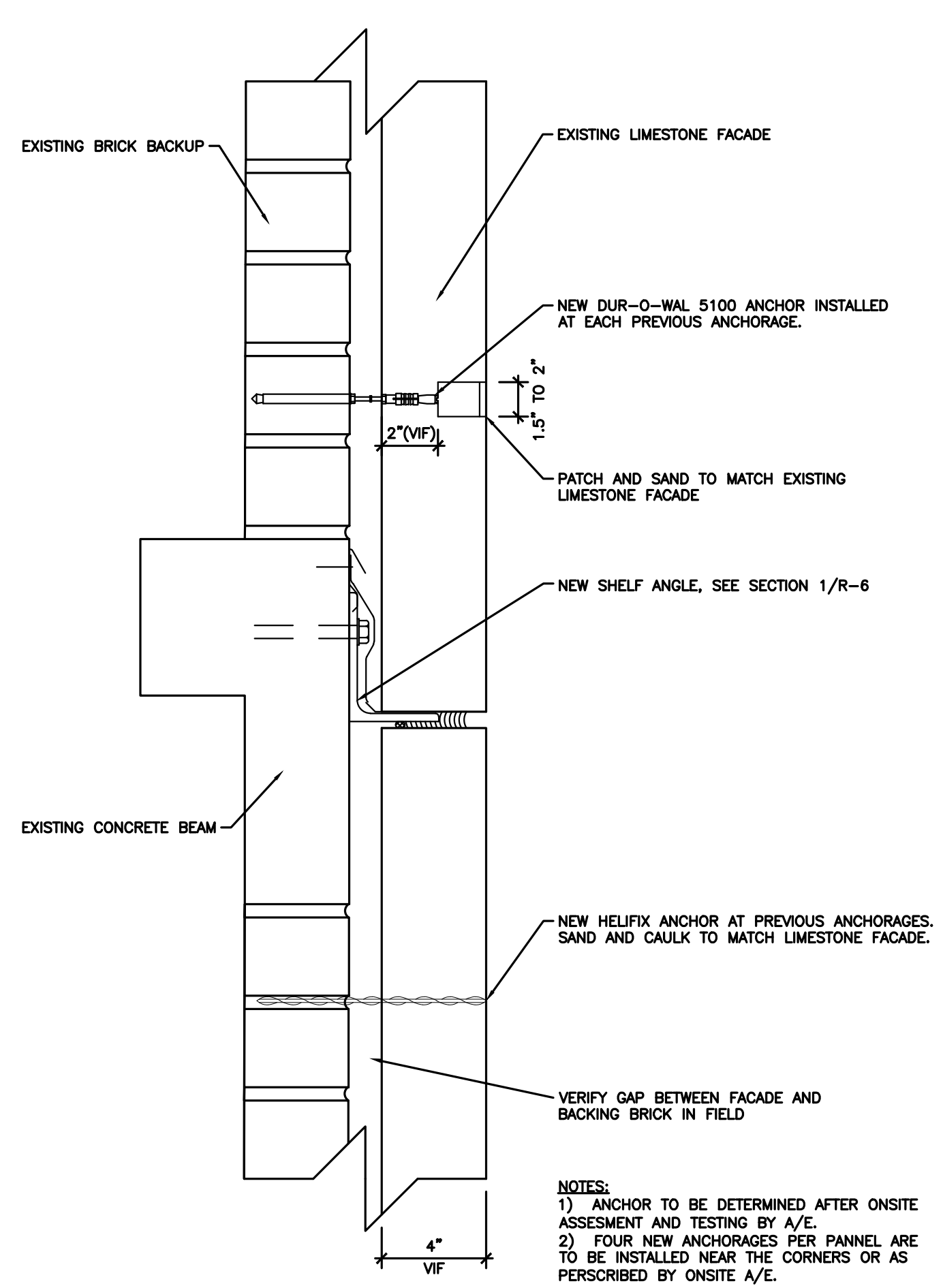
| | | |
|---|---|--------------------------------------|
| Drawing Title MISCELLANEOUS REPAIR DETAILS | Project Title PHASE 10 V.A. CHICAGO Medical Center | Date 7/31/13 |
| Approved: Chief of Engineering | Building Number & Floor BUILDING 1 ALL FLOORS | Project No. (CONSTRUCTION) |
| Approved: Director | Location 820 S. DAMEN Ave. CHICAGO IL - 60612 | DRAWING NO. R8-10 |
| | | Dwg. 9 of 10 |

DEPARTMENT OF VETERANS AFFAIRS

one-eighth inch = one foot
one-quarter inch = one foot
three-eighths inch = one foot
one-half inch = one foot
three-quarters inch = one foot
one inch = one foot
one and one-half inches = one foot
three inches = one foot



1 FLASHING DETAIL
3" = 1'-0"



3 FLASHING DETAIL
NOT TO SCALE

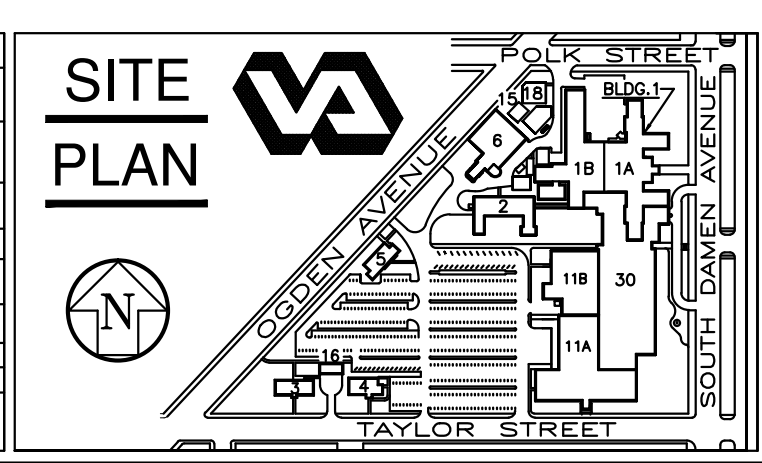
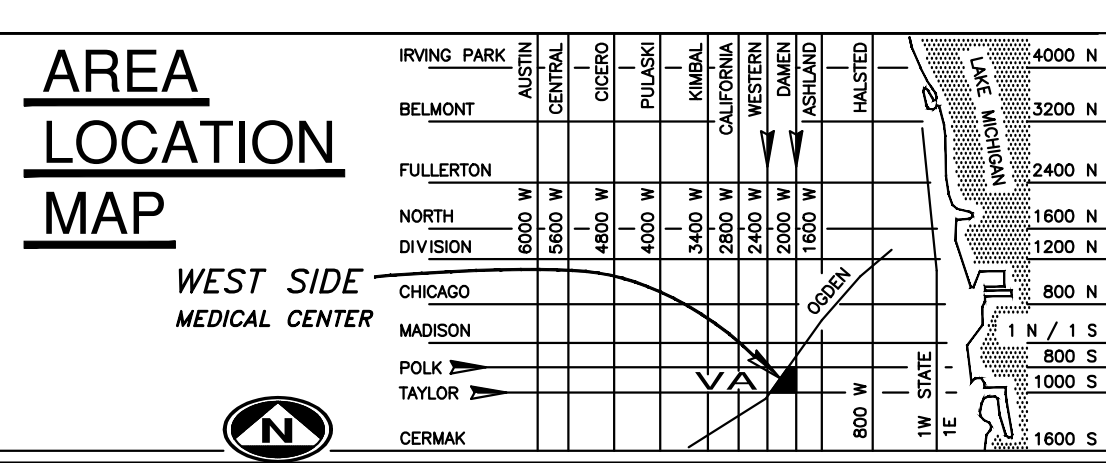
| Revisions | Date |
|-----------|-------------------------|
| 9 | |
| 8 | |
| 7 | |
| 6 | |
| 5 | |
| 4 | |
| 3 | 100% COMPLETION 7/31/13 |
| 2 | 95% COMPLETION 1/21/09 |
| 1 | 25% COMPLETION 11/06/08 |

FREGA ASSOCIATES. LTD.
ARCHITECTS ENGINEERS PLANNERS
411 S. Wells Street, 5th Floor
Chicago, IL 60607

WJE
ENGINEERS
ARCHITECTS
MATERIALS SCIENTISTS

Wiss, Janney, Elstner Associates, Inc.
330 Pfingsten Road
Northbrook, Illinois 60062
847.272.7400 tel | 847.291.5189 fax
www.wja.com

Headquarters & Laboratories: Northbrook, Illinois
Atlanta | Austin | Boston | Chicago | Cleveland | Dallas | Denver | Detroit
Honolulu | Houston | Los Angeles | Minneapolis | New Haven | New York
Princeton | San Francisco | Seattle | Washington, D.C.



| | | | | | | | | |
|--------------------------------|------------------------------|--|--------------------------|--|-------|---------------|----------------|--|
| Drawing Title | MISCELLANEOUS REPAIR DETAILS | | Project Title | PHASE 10 V.A. CHICAGO Medical Center | | Date | 7/31/13 | |
| Approved: Chief of Engineering | Date | | Building Number & Floor | Checked | Drawn | Project No. | (CONSTRUCTION) | |
| Approved: Director | Date | | BUILDING 1 ALL FLOORS | JEP | SBS | DRAWING NO. | R9-10 | |
| | | | Location | 820 S. DAMEN Ave. CHICAGO IL - 60612 | | Dwg. 10 of 10 | | |

DEPARTMENT OF VETERANS AFFAIRS