



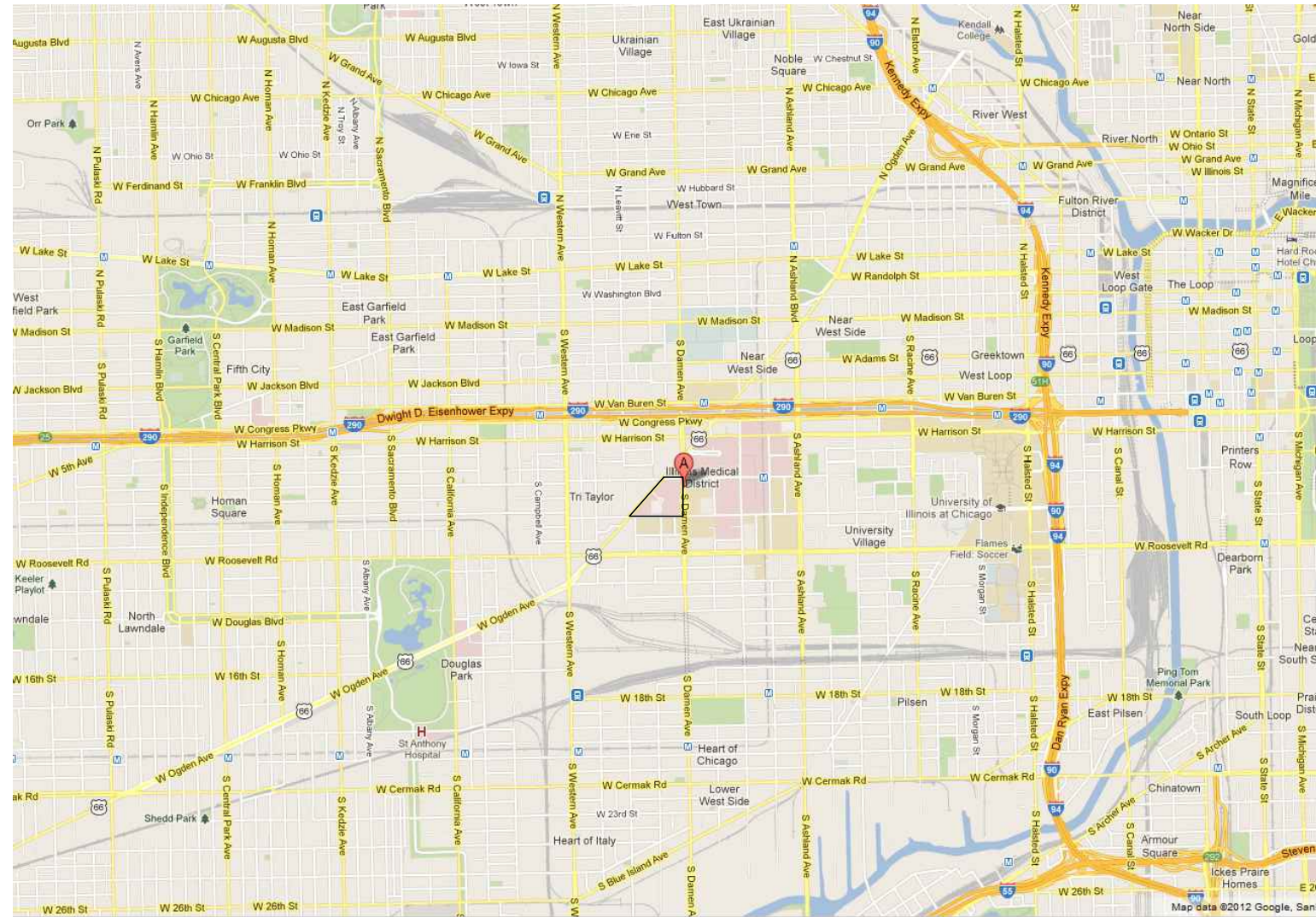
JESSE BROWN VA MEDICAL CENTER

820 S. DAMEN AVE. CHICAGO, ILLINOIS 60612

MASONRY REPAIRS, PHASE 17



VICINITY MAP

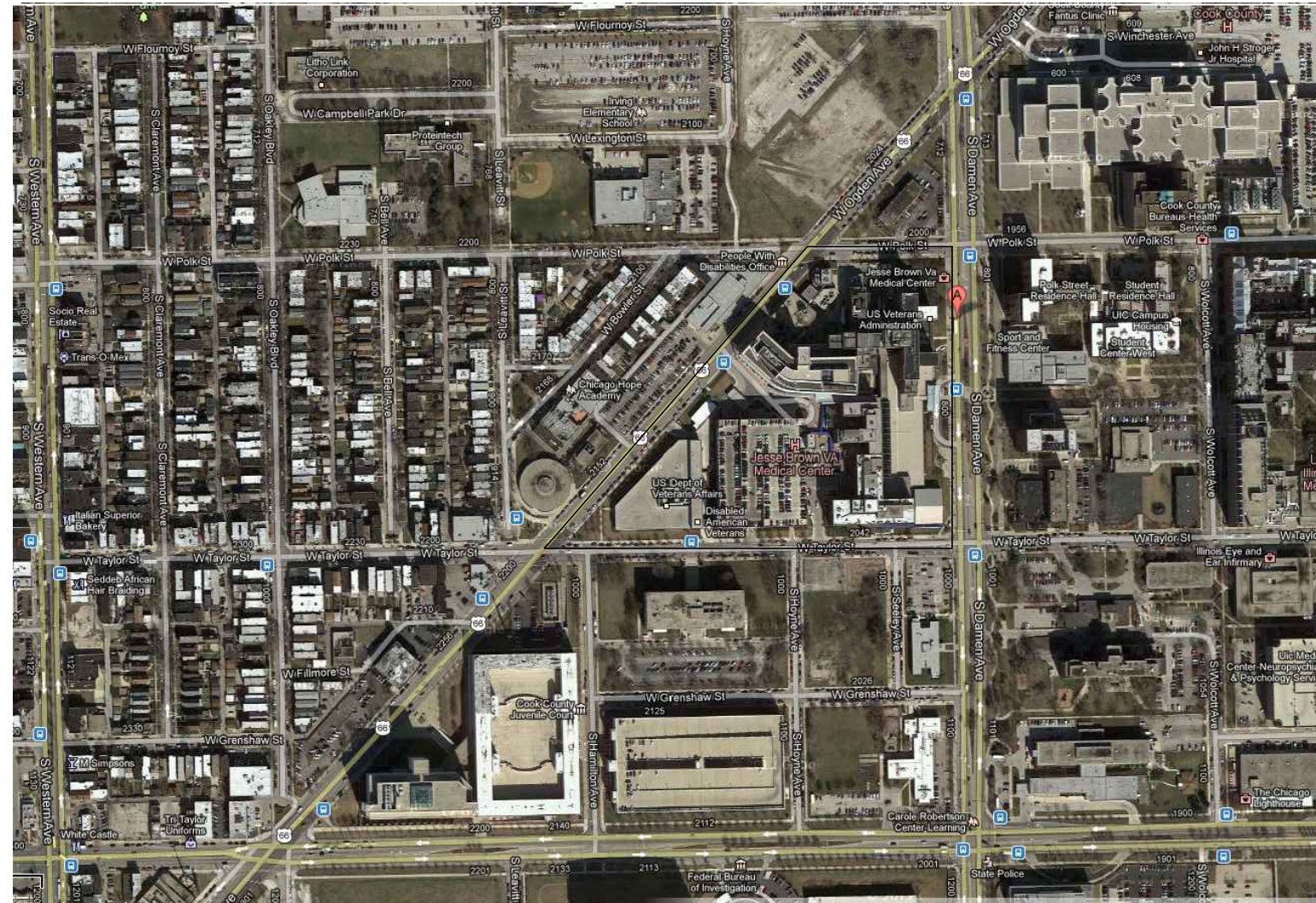


Sheet Index	
R0-17	COVER SHEET
R1-17	PHASE LAYOUT
R2-17	ELEVATION
R3-17	BLANK
R4-17	CONCRETE REPAIRS AND EXPANSION JOINT
R5-17	BRICK AND SHELF ANGLE REPAIRS AT WINDOWS
R6-17	SHELF ANGLE REPAIRS AWAY FROM WINDOWS
R7-17	PARAPET WALL DETAILS
R8-17	MISCELLANEOUS REPAIR DETAILS
R9-17	MISCELLANEOUS REPAIR DETAILS

R0-17
└─ PHASE NUMBER
└─ SHEET NUMBER

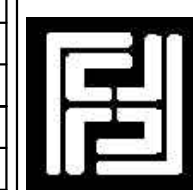
Phase 17 Bid Quantities			
Item	Type of Work	Unit	Estimated Quantity
1a	Remove masonry at corners per detail 6/R4-17	sq. ft.	150
1b	Replace masonry at corners per details 6/R4-17	sq. ft.	150
2a	Remove concrete per details 2/R4-17 and 3/R4-17	sq. ft.	200
2b	Replace concrete per detail 2/R4-17 and 3/R4-17	sq. ft.	200
3a	Remove parapet and coping stone per sheet R7-17	lin. ft.	160
3b	Replace parapet and new coping stone and integrate with existing roof system per sheet R7-17	lin. ft.	160
4	Cut new vertical expansion joint per 4/R4-17	lin. ft.	210
5a	Remove shelf angle including masonry work per detail 1/R6-17	lin. ft.	900
5b	Replace new steel shelf angle and flashing including masonry work per detail 1/R6-17	lin. ft.	900
6a	Remove window lintel (steel angle) including masonry work per detail 4/R5-17	lin. ft.	400
6b	Replace new window lintel (steel angle) and flashing including masonry work per detail 4/R5-17	lin. ft.	400
7	Remove exterior wythe of brick masonry	sq. ft.	120
8	Install exterior wythe of brick masonry	sq. ft.	120
9a	Remove limestone panel	sq. ft.	0
9b	Replace limestone panel per 3/R8-17	sq. ft.	0
10	Install supplemental Helifix anchors per details 1/R8-17, 1/R5-17, and 3/R5-17 (location of Helifix anchors will be verified by COTR/AE before installation; contractor will provide drawings showing location of intended installation)	each	3,150
11	Grind and repoint masonry mortar per detail 4/R8-17 and 5/R8-17	sq. ft.	9,600
12	Grind and repoint limestone mortar per details 4/R8-17 and 6/R8-17	sq. ft.	0
13	Remove existing sealant and install new sealant and backer rod at window perimeter per detail 5/R5-17	lin. ft.	1105
14	Facade cleaning	sq. ft.	10,000
15	Remove and replace damaged limestone window sill	sq. ft.	25
16	Seal cracks in window sill	lin. ft.	30
17	Remove Jesse Brown VA Hospital sign; relocate on roof, securely position to be observed from street level; replace sign once masonry repair work is completed	sign	0
18	Roof membrane removal and replacement at parapet	sq. ft.	850

SITE LOCATION MAP



820 S. DAMEN AVENUE,
CHICAGO, IL 60612

9		
8		
7		
6		
5		
4		
3	100% COMPLETION	7/31/13
2	95% COMPLETION	7/5/12
1	35% COMPLETION	1/16/12
Revisions		Date



FREGA ASSOCIATES, LTD.
ARCHITECTS ENGINEERS PLANNERS
411 S. Wells Street, 5th Floor
Chicago, IL 60607



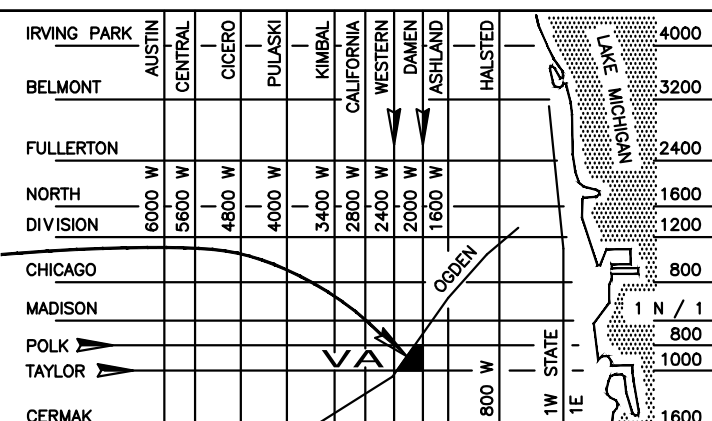
**ENGINEERS
ARCHITECTS
MATERIALS SCIENTISTS**

Wiss, Janney, Elstner Associates, Inc.
330 Pfingsten Road
Northbrook, Illinois 60062
847.272.7400 tel | 847.291.5189 fax
www.wja.com

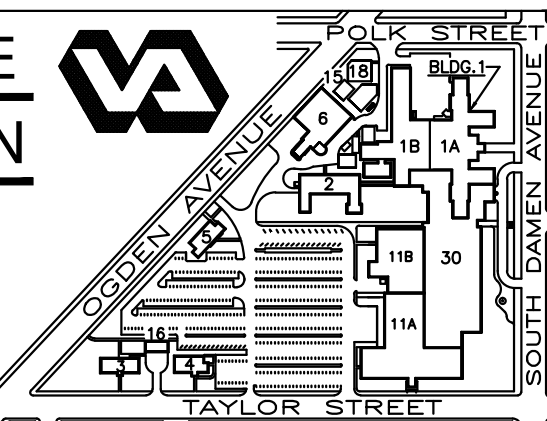
Headquarters & Laboratories: Northbrook, Illinois
Atlanta | Austin | Boston | Chicago | Cleveland | Dallas | Denver | Detroit
Honolulu | Houston | Los Angeles | Minneapolis | New Haven | New York
Princeton | San Francisco | Seattle | Washington, D.C.

AREA LOCATION MAP

WEST SIDE
MEDICAL CENTER



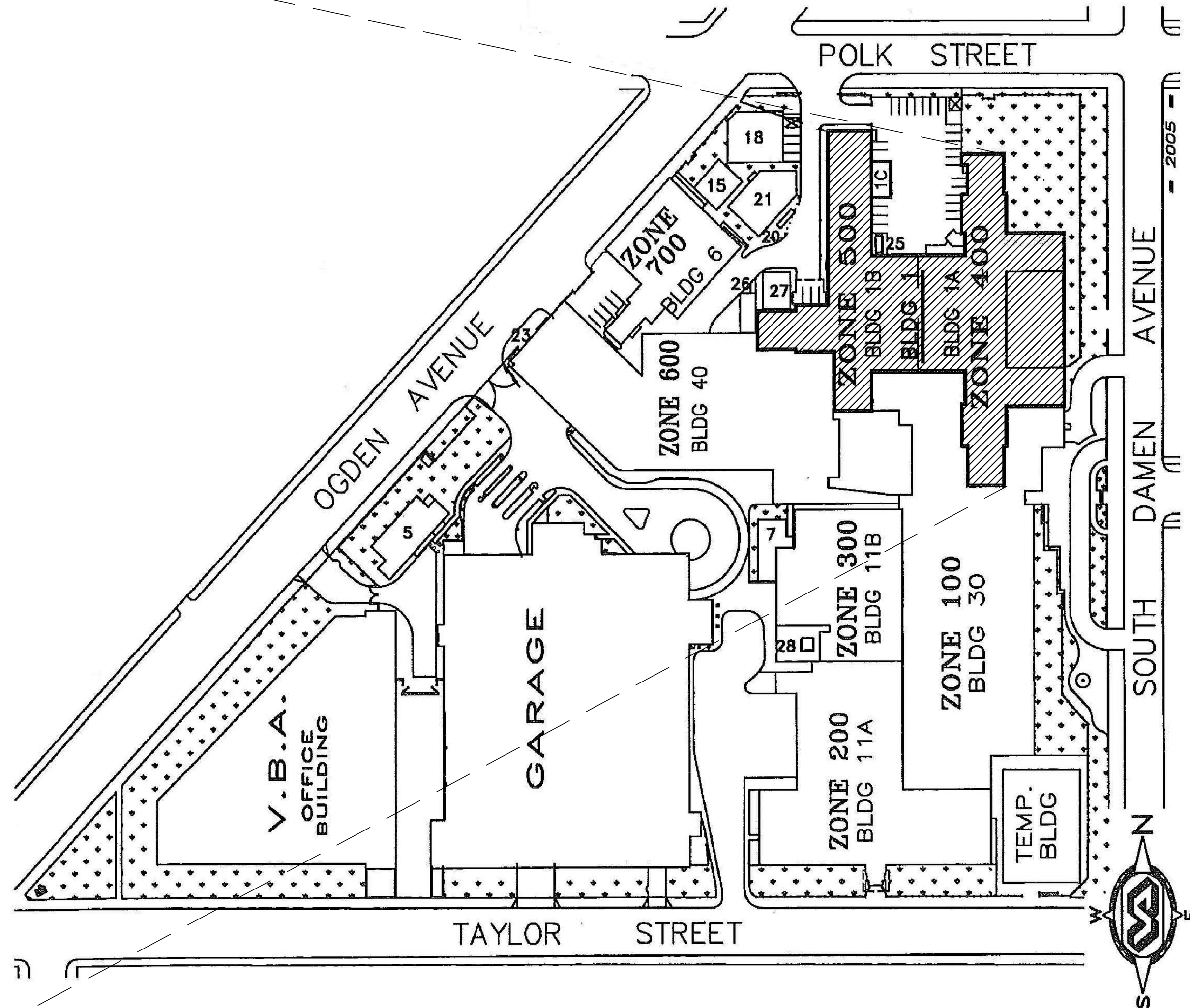
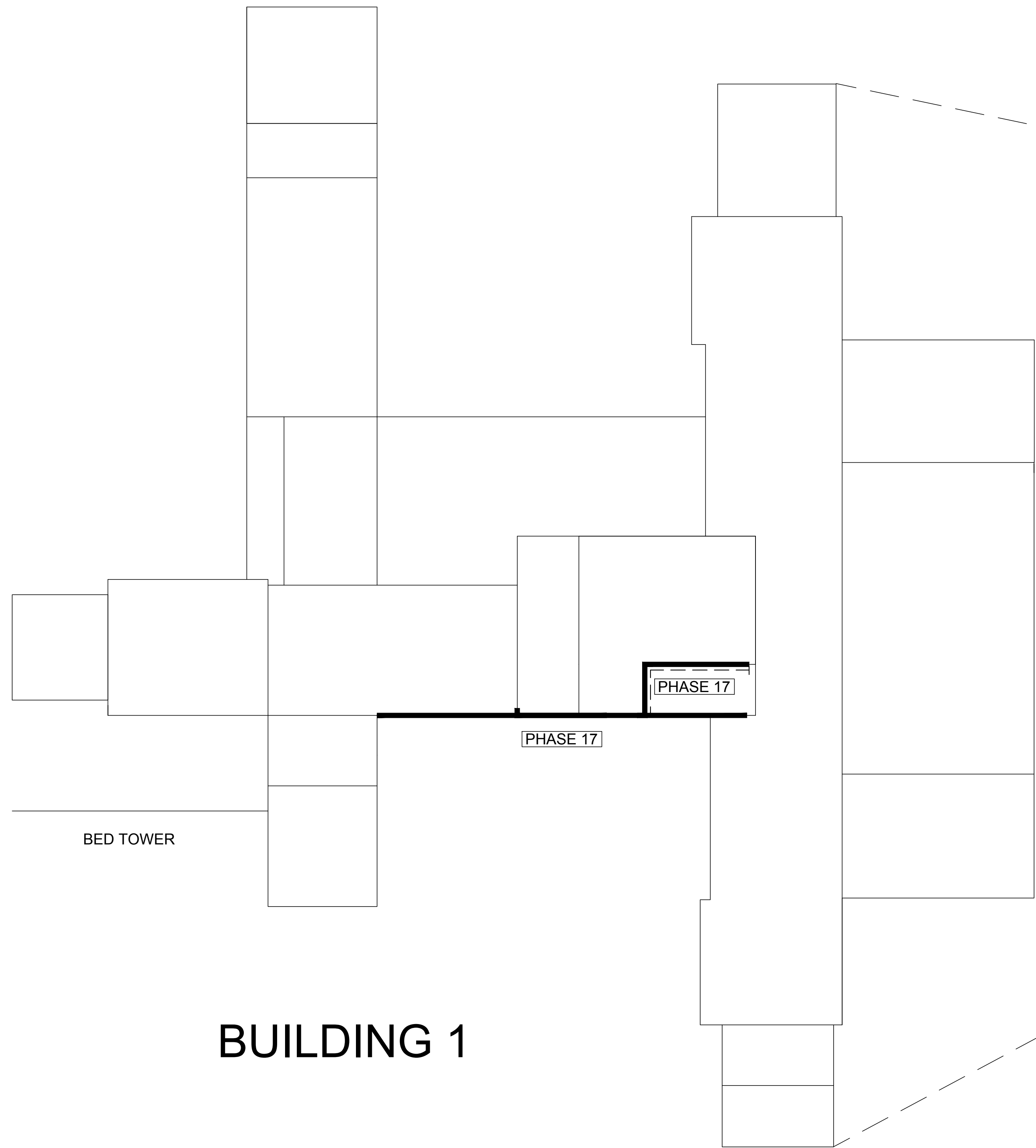
SITE PLAN



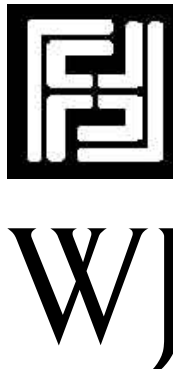
Drawing Title BUILDING 1 PHASE LAYOUT		Project Title PHASE 17 V.A. CHICAGO Medical Center		Date 7/31/13
Approved: Chief of Engineering	Date	Building Number & Floor BUILDING 1 ALL FLOORS	Checked JEP	Drawn SBS
Approved: Director	Date	Location 820 S. DAMEN Ave. CHICAGO IL - 60612	DRAWING NO. R0-17 Dwg. 1 of 10	

DEPARTMENT OF
VETERANS AFFAIRS

Scale bars and grid lines (A through F, 1 through 9) are located along the top and left margins of the drawing.



Revisions	Date
9	
8	
7	
6	
5	
4	
3	100% COMPLETION 7/31/13
2	95% COMPLETION 7/5/12
1	35% COMPLETION 1/16/12



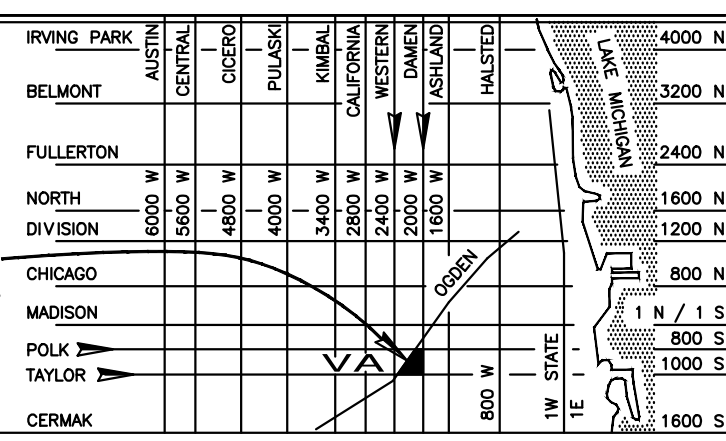
FREGA ASSOCIATES, LTD.
ARCHITECTS ENGINEERS PLANNERS
411 S. Wells Street, 5th Floor
Chicago, IL 60607

WJE ENGINEERS
ARCHITECTS
MATERIALS SCIENTISTS

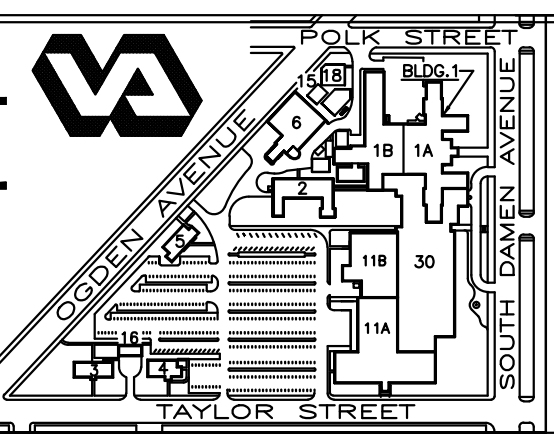
Wiss, Janney, Elstner Associates, Inc.
330 Pfingsten Road
Northbrook, Illinois 60062
847.272.7400 tel | 847.291.5189 fax
www.wja.com

Headquarters & Laboratories: Northbrook, Illinois
Atlanta | Austin | Boston | Chicago | Cleveland | Dallas | Denver | Detroit
Honolulu | Houston | Los Angeles | Minneapolis | New Haven | New York
Princeton | San Francisco | Seattle | Washington, D.C.

AREA LOCATION MAP



SITE PLAN



Drawing Title	
BUILDING 1 PHASE LAYOUT	
Approved: Chief of Engineering	Date
Approved: Director	Date

Project Title	
PHASE 17 V.A. CHICAGO Medical Center	
Building Number & Floor BUILDING 1 ALL FLOORS	Checked JEP Drawn SBS
Location 820 S. DAMEN Ave. CHICAGO IL - 60612	

Date 7/31/13
Project No. (CONSTRUCTION)
Drawing No. R1-17
Dwg. 2 of 10

DEPARTMENT OF
VETERANS AFFAIRS

LEGEND

- NEW BRICK
- NEW SHELF ANGLE & FLASHING
- NEW WINDOW LINTEL & FLASHING
- CONCRETE REPAIRS
- NEW LIMESTONE
- HELIFIX
- NEW CONTROL JOINTS

MECHANICAL UNIT RESOLUTION OF SUPPORT WILL BE DONE AFTER FIELD INVESTIGATION

- ROOF SLAB
- FINISH 11th FLOOR
- FINISH 10th FLOOR
- FINISH 9th FLOOR
- FINISH 8th FLOOR
- FINISH 7th FLOOR
- FINISH 6th FLOOR
- FINISH 5th FLOOR
- FINISH 4th FLOOR
- FINISH 3rd FLOOR
- FINISH 2nd FLOOR
- FINISH 1st FLOOR
- FINISH GROUND FLOOR

105' - VIF

100' - VIF

26' - VIF

1 SOUTH ELEVATION - PHASE 17
NOT TO SCALE

NOTES:

- DETAILS ON ALL SHEETS ARE TYPICAL AND APPLY TO THE ENTIRE PHASE
- 'X' SHOWN IN DETAIL SHEETS REPRESENTS PHASE NUMBER
- MECHANICAL UNIT RESOLUTION OF SUPPORT WILL BE DONE AFTER FIELD INVESTIGATION

Revisions	Date
9	
8	
7	
6	
5	
4	
3	100% COMPLETION 7/31/13
2	95% COMPLETION 7/5/12
1	35% COMPLETION 1/16/12



FREGA ASSOCIATES, LTD.
ARCHITECTS ENGINEERS PLANNERS
411 S. Wells Street, 5th Floor
Chicago, IL 60607



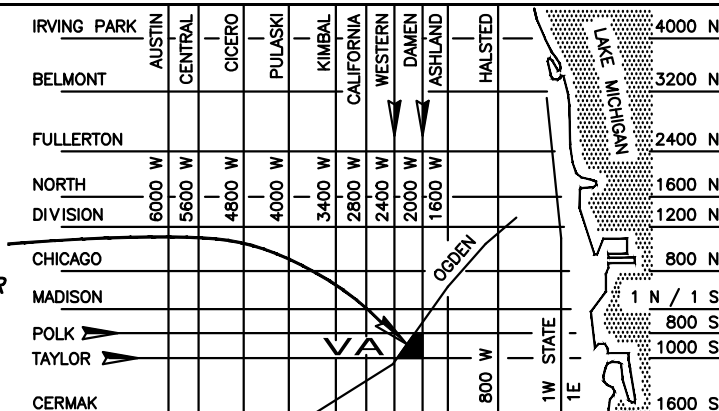
ENGINEERS
ARCHITECTS
MATERIALS SCIENTISTS

Wiss, Janney, Elstner Associates, Inc.
330 Pfingsten Road
Northbrook, Illinois 60062
847.272.7400 tel | 847.291.5189 fax
www.wja.com

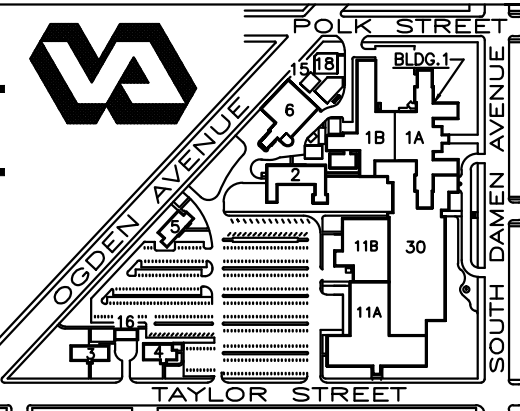
Headquarters & Laboratories : Northbrook, Illinois
Atlanta | Austin | Boston | Chicago | Cleveland | Dallas | Denver | Detroit
Honolulu | Houston | Los Angeles | Minneapolis | New Haven | New York
Princeton | San Francisco | Seattle | Washington, D.C.

AREA
LOCATION
MAP

WEST SIDE
MEDICAL CENTER



SITE
PLAN



Drawing Title	
BUILDING 1 ELEVATION AREA OF WORK	
Approved: Chief of Engineering	Date
Approved: Director	Date

Project Title	
PHASE 17 V.A. CHICAGO Medical Center	
Building Number & Floor	Checked
BUILDING 1 ALL FLOORS	JEP
Drawn	EJK
Location 820 S. DAMEN Ave. CHICAGO IL - 60612	

Date
7/31/13
Project No.
(CONSTRUCTION)
Drawing No.
R2-17
Dwg. 3 of 10

DEPARTMENT OF
VETERANS AFFAIRS

THIS PAGE HAS INTENTIONALLY BEEN LEFT BLANK

Revisions

Revisions	Date	
9		
8		
7		
6		
5		
4		
3	100% COMPLETION	7/31/13
2	95% COMPLETION	7/5/12
1	35% COMPLETION	1/16/12

WJE ENGINEERS ARCHITECTS MATERIALS SCIENTISTS
411 S. Wells Street, 5th Floor
Chicago, IL 60607

Wiss, Janney, Elstner Associates, Inc.
330 Pfingsten Road
Northbrook, Illinois 60062
847.272.7400 tel | 847.291.5189 fax
www.wjae.com

Headquarters & Laboratories: Northbrook, Illinois
Atlanta | Austin | Boston | Chicago | Cleveland | Dallas | Denver | Detroit
Honolulu | Houston | Los Angeles | Minneapolis | New Haven | New York
Princeton | San Francisco | Seattle | Washington, D.C.

AREA LOCATION MAP

WEST SIDE MEDICAL CENTER

SITE PLAN

BUILDING 1
ELEVATION AREA OF WORK

PHASE 17
V.A. CHICAGO
Medical Center

Building Number & Floor
BUILDING 1
ALL FLOORS

Checked
JEP

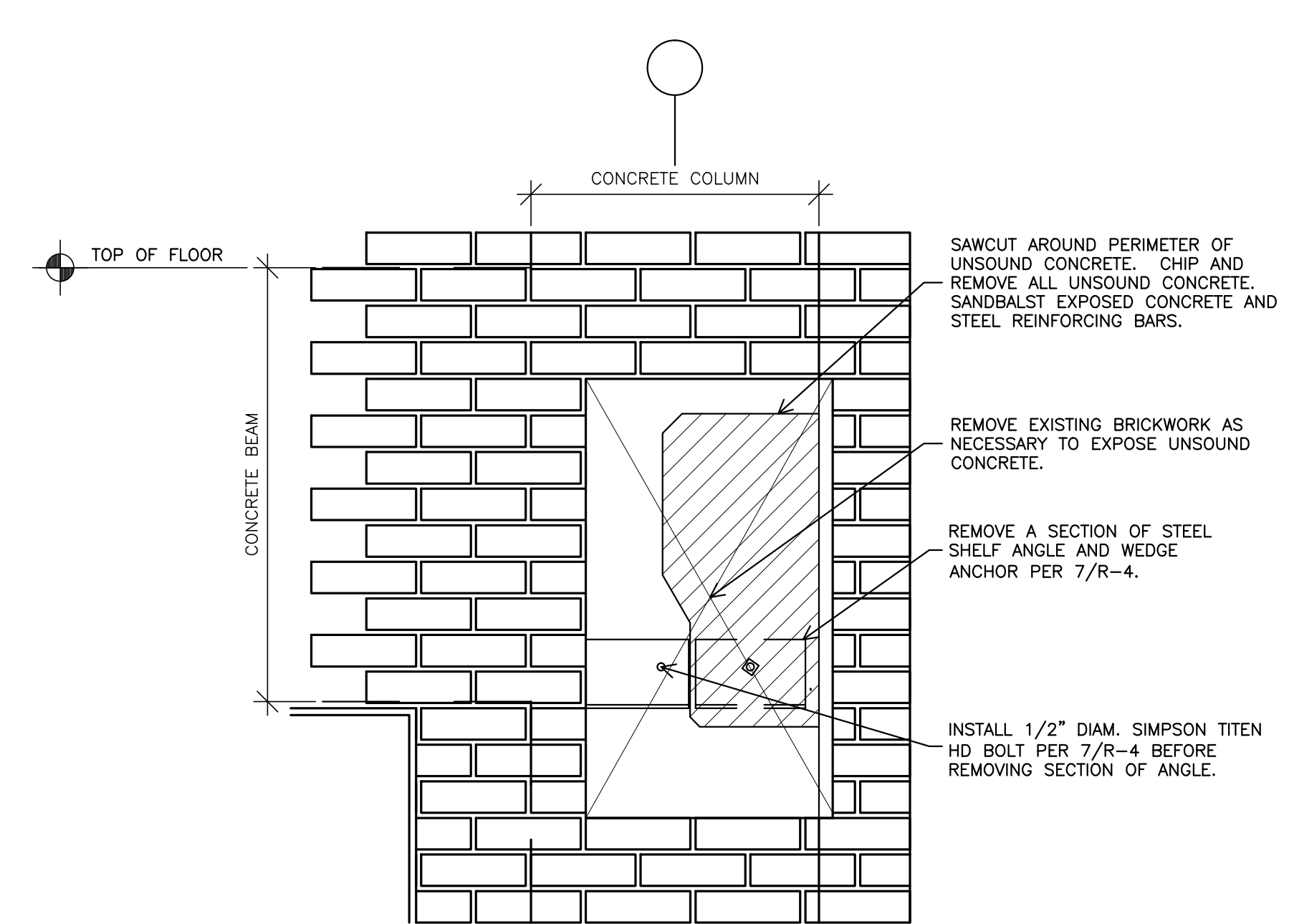
Drawn
SBS

Location
820 S. DAMEN Ave.
CHICAGO IL - 60612

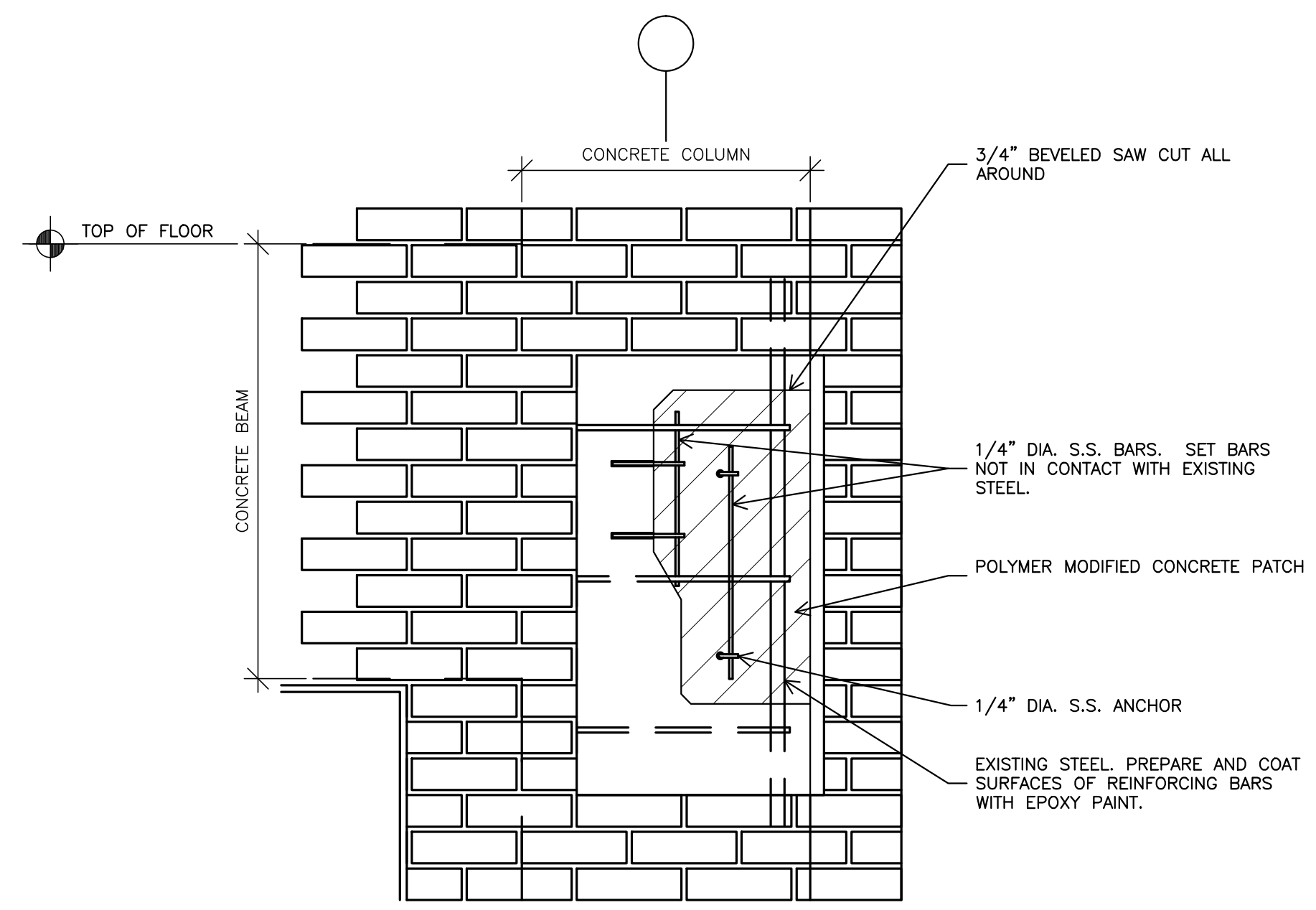
DRAWING NO.
R3-17
Dwg. 4 of 10

DEPARTMENT OF VETERANS AFFAIRS

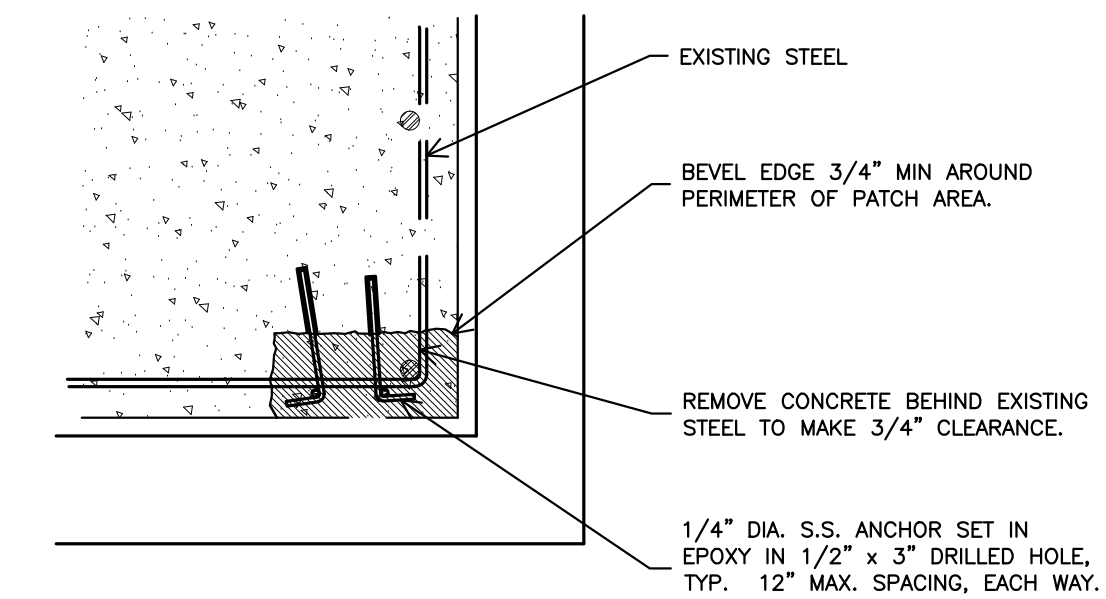
Scale bars and grid lines (A through F, 1 through 9) are located along the left and top margins of the drawing.



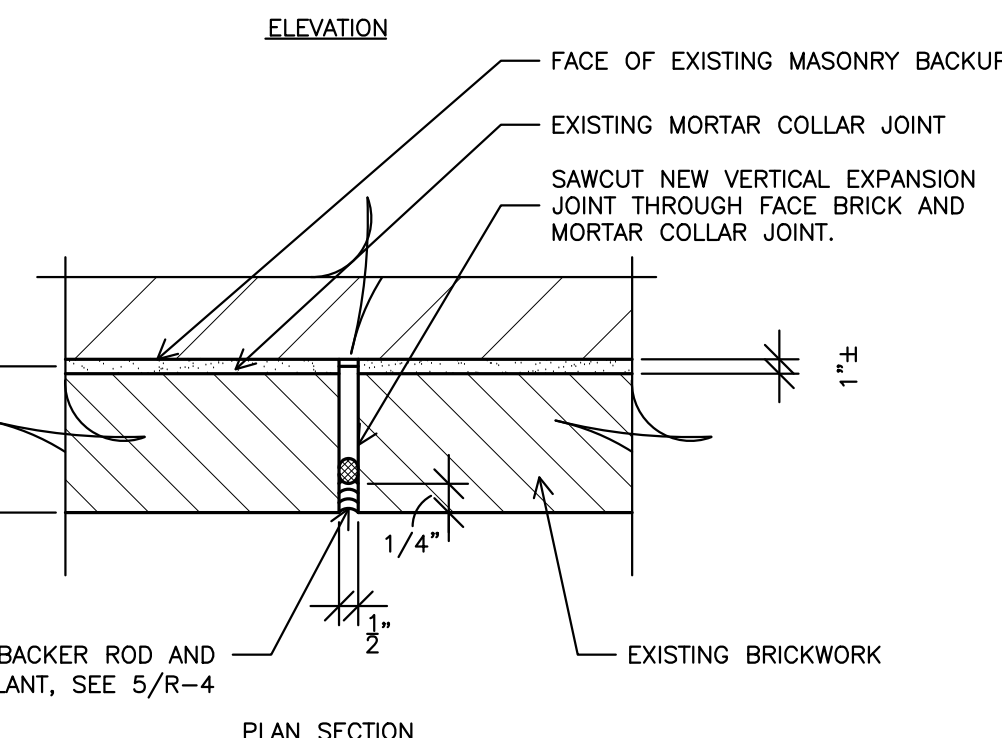
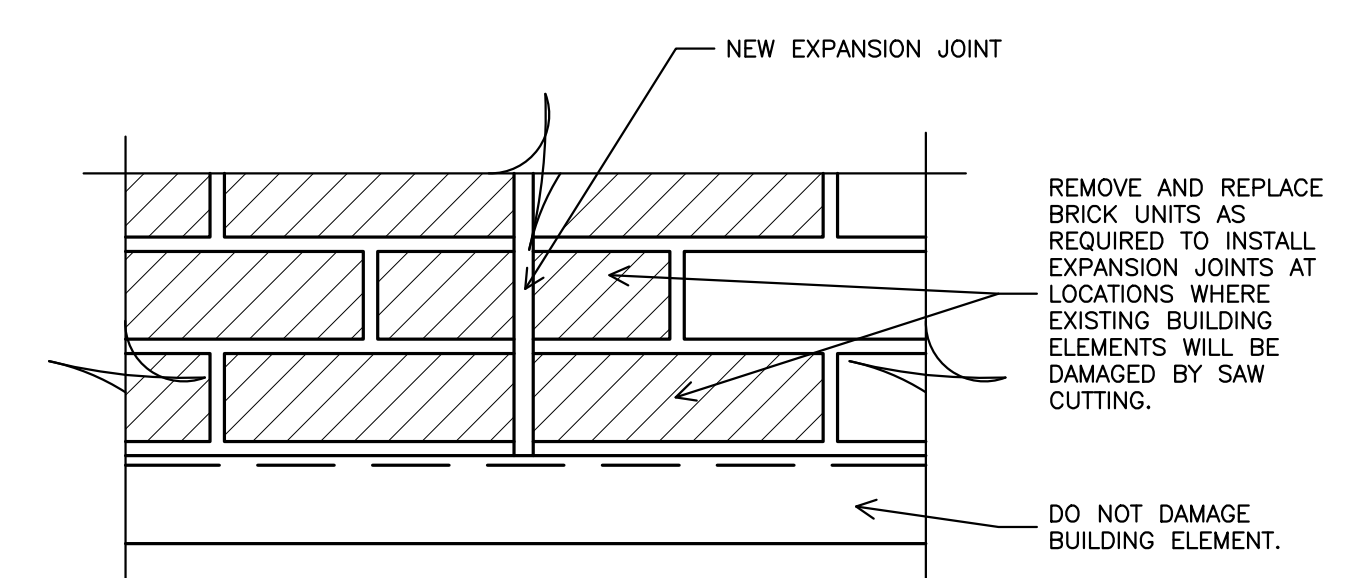
1 REMOVAL OF UNSOUND CONCRETE
1-1/2" = 1'-0"



2 CONCRETE REPAIR - PARTIAL ELEVATION
1-1/2" = 1'-0"

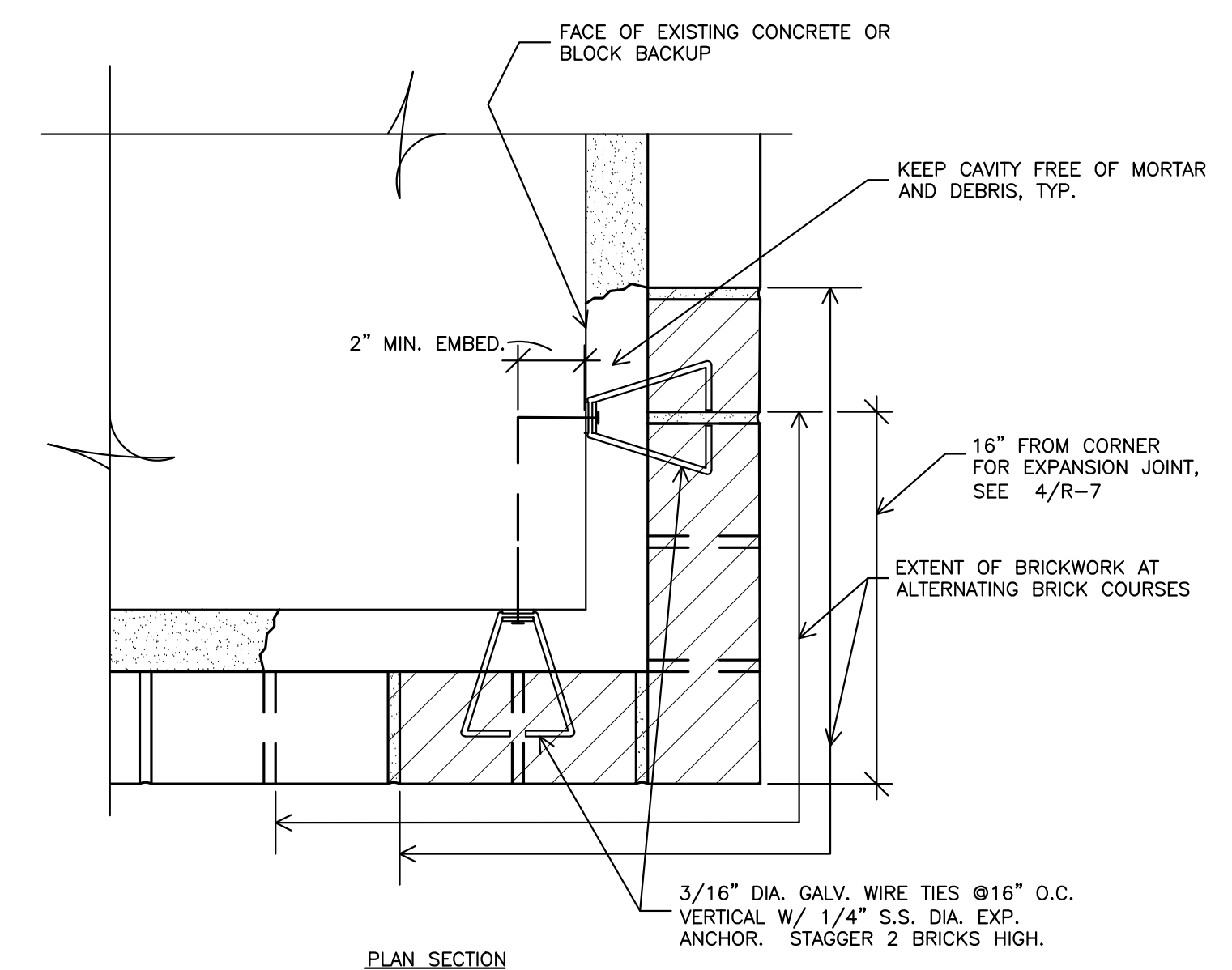


3 COLUMN CONCRETE REPAIR
1-1/2" = 1'-0"

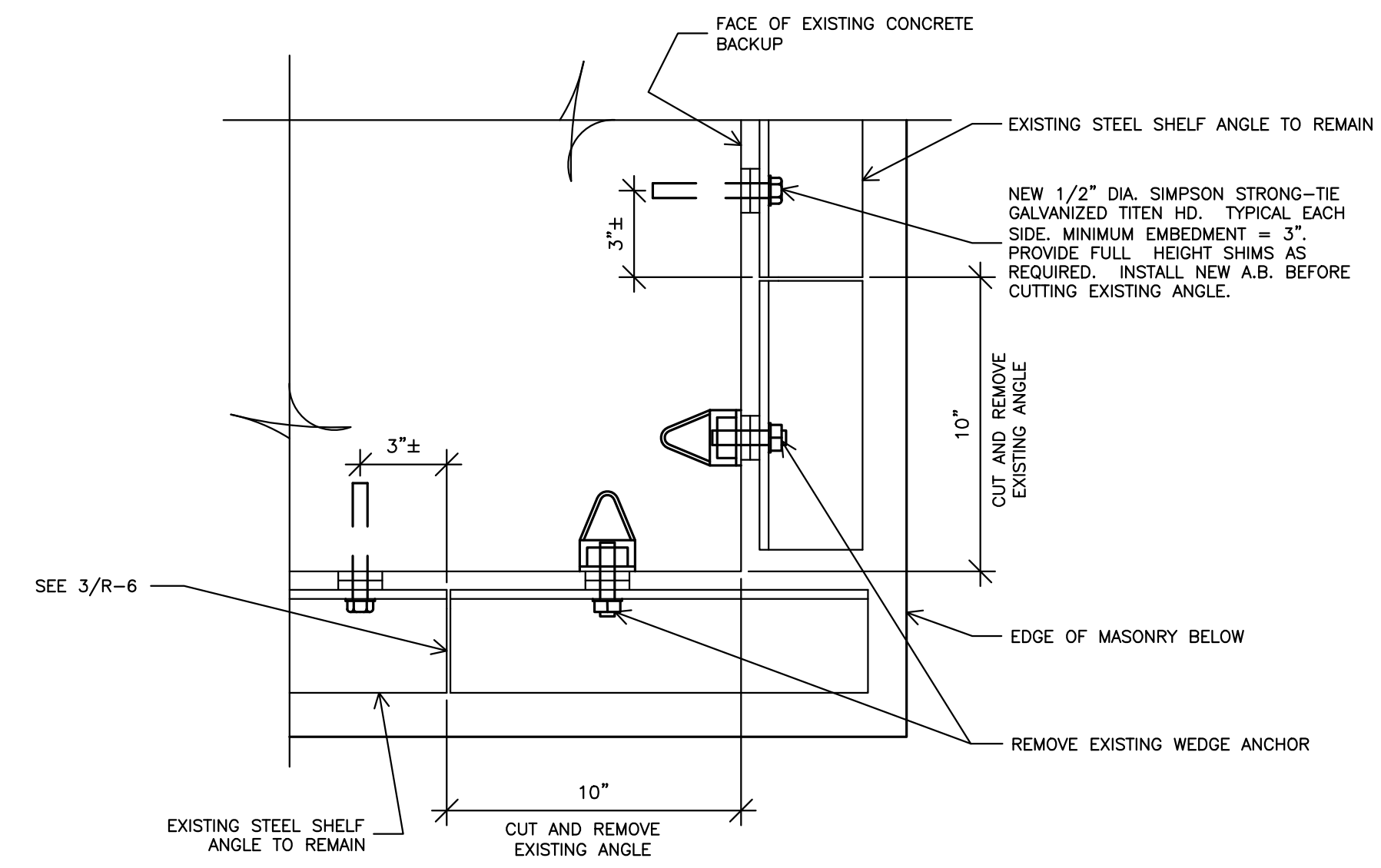


4 CORNER VERTICAL EXPANSION JOINT
3" = 1'-0"

5 BACKER ROD & SEALANT DETAIL
NONE



6 BRICKWORK AT CORNER
3" = 1'-0"



7 EXISTING SHELF ANGLE AT CORNER - REMOVAL
3" = 1'-0"

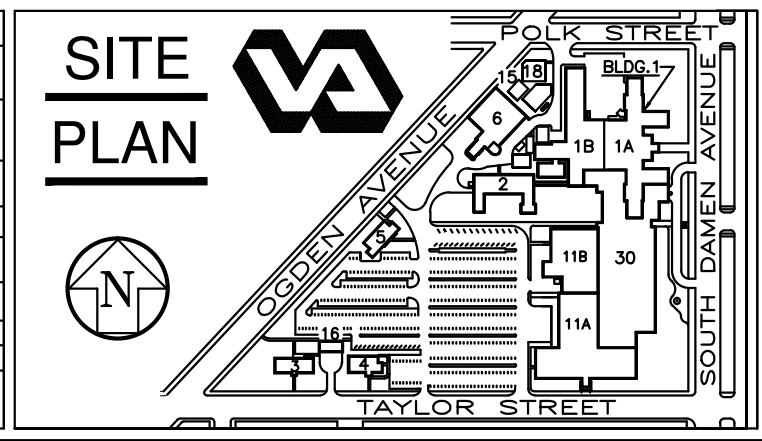
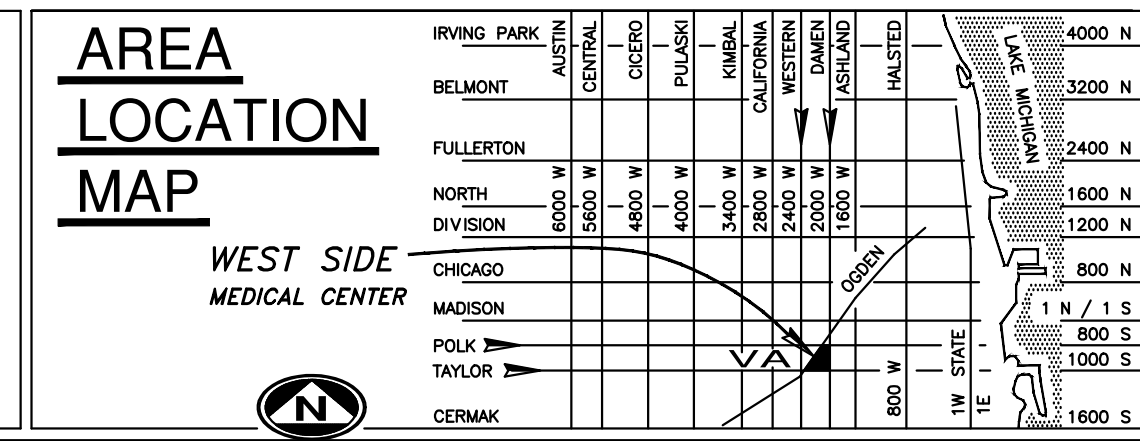
9		
8		
7		
6		
5		
4		
3	100% COMPLETION	7/31/13
2	95% COMPLETION	1/21/09
1	25% COMPLETION	11/06/08
Revisions		Date

FREGA ASSOCIATES, LTD.
ARCHITECTS ENGINEERS PLANNERS
411 S. Wells Street, 5th Floor
Chicago, IL 60607

WJE ENGINEERS
ARCHITECTS
MATERIALS SCIENTISTS

Wiss, Janney, Elstner Associates, Inc.
330 Pfingsten Road
Northbrook, Illinois 60062
847.272.7400 tel | 847.291.5189 fax
www.wja.com

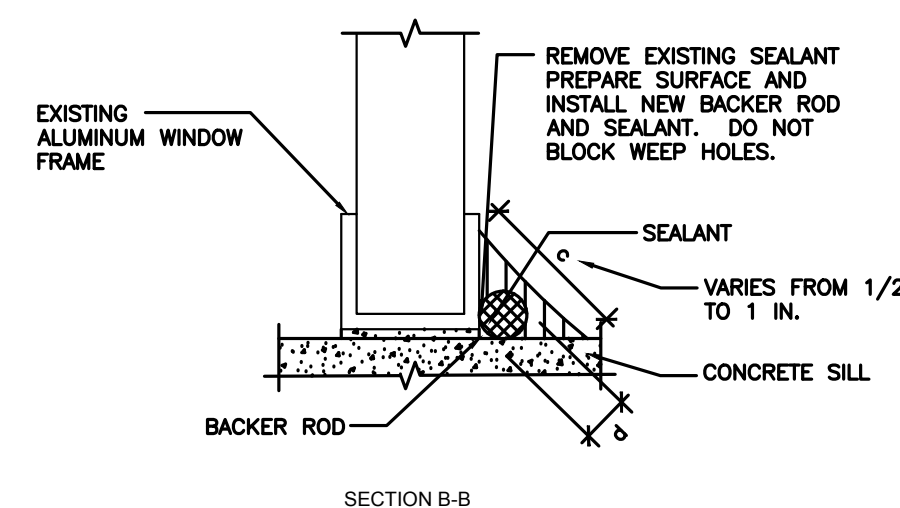
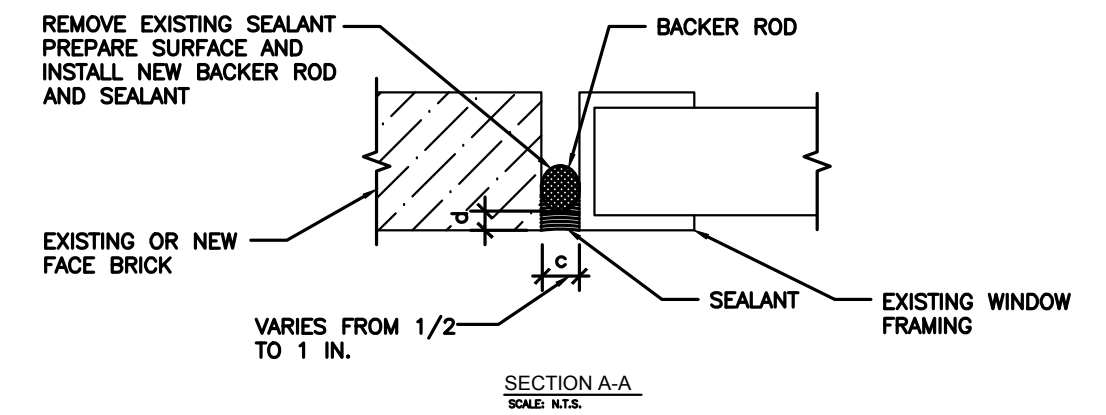
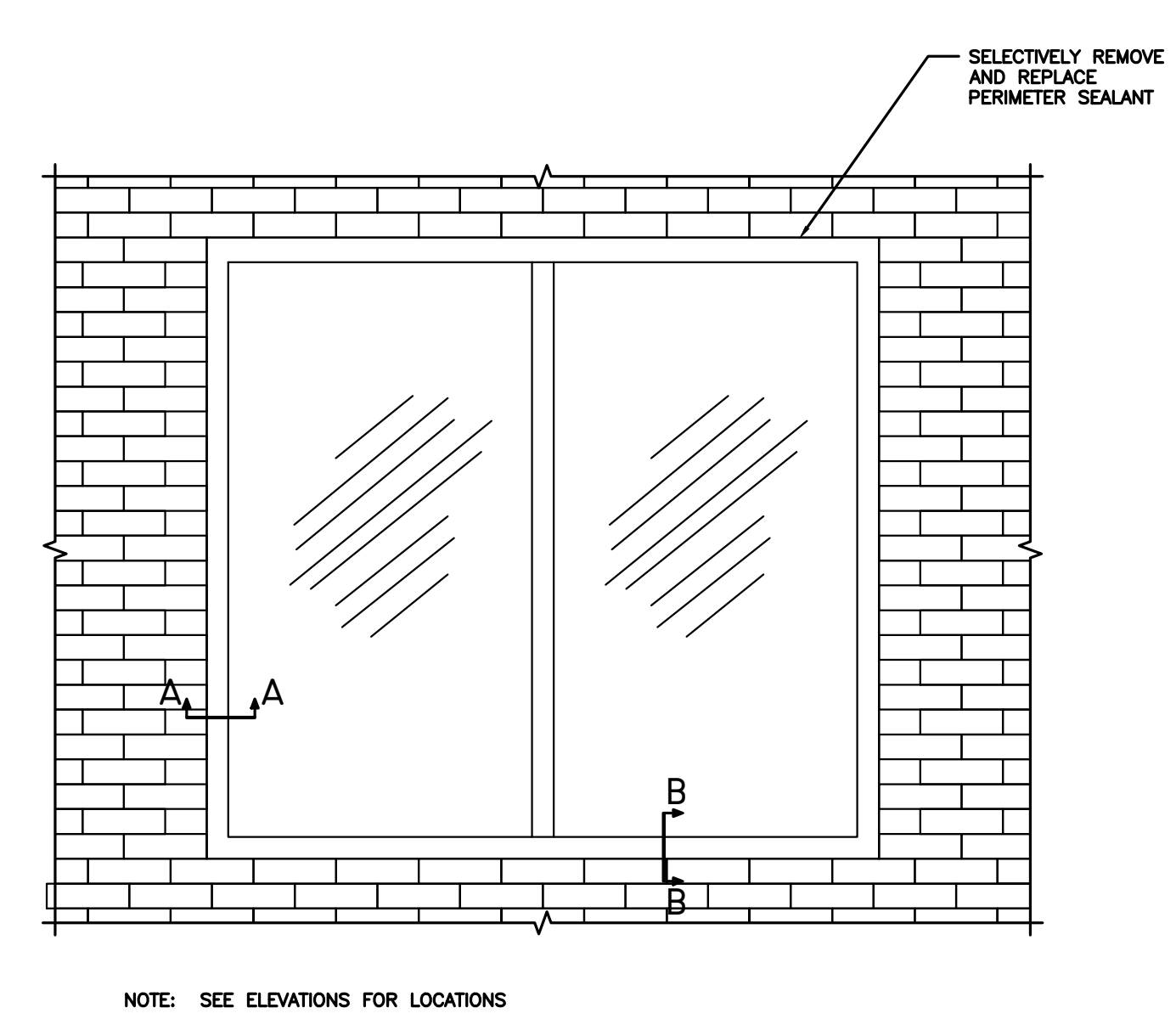
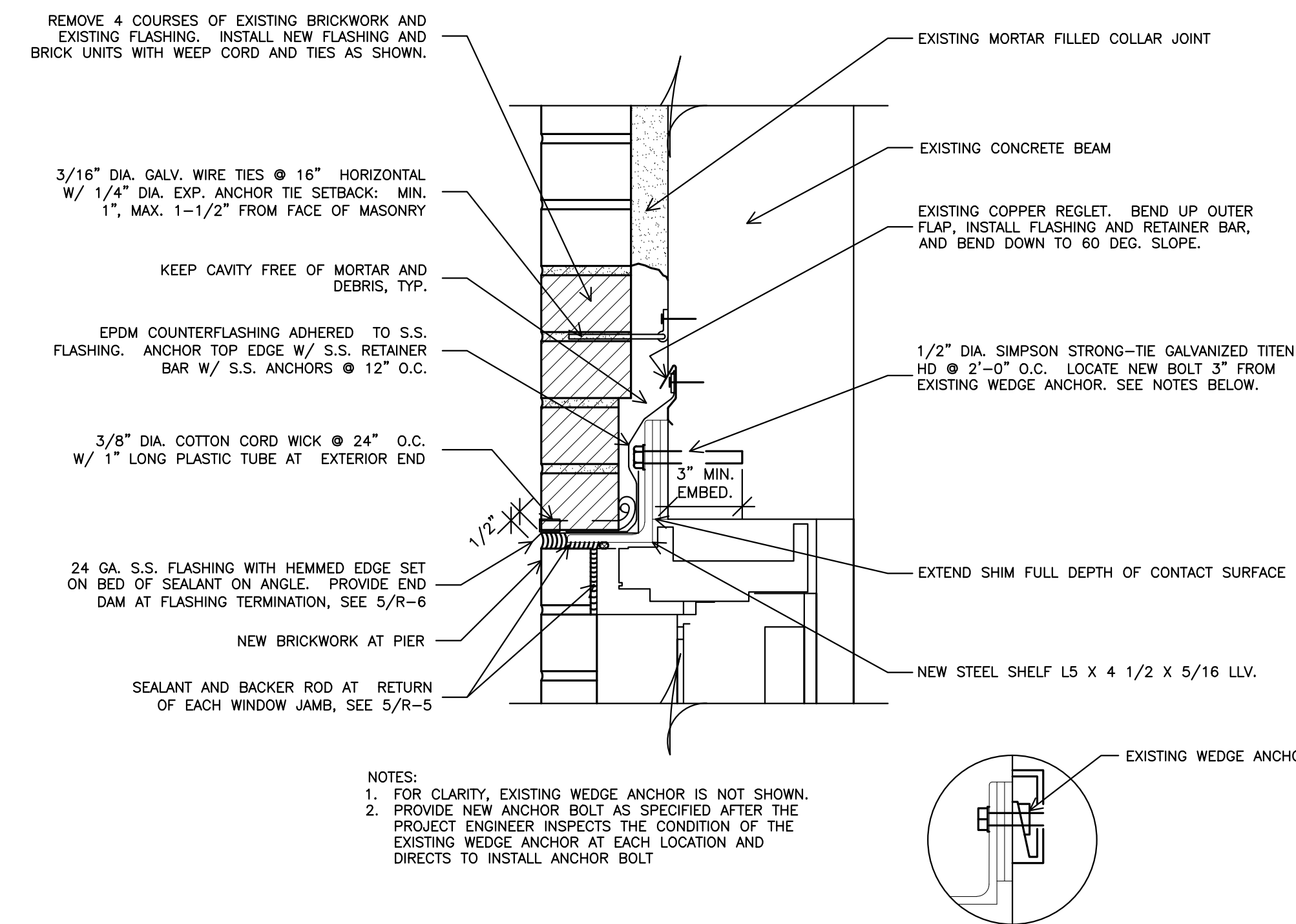
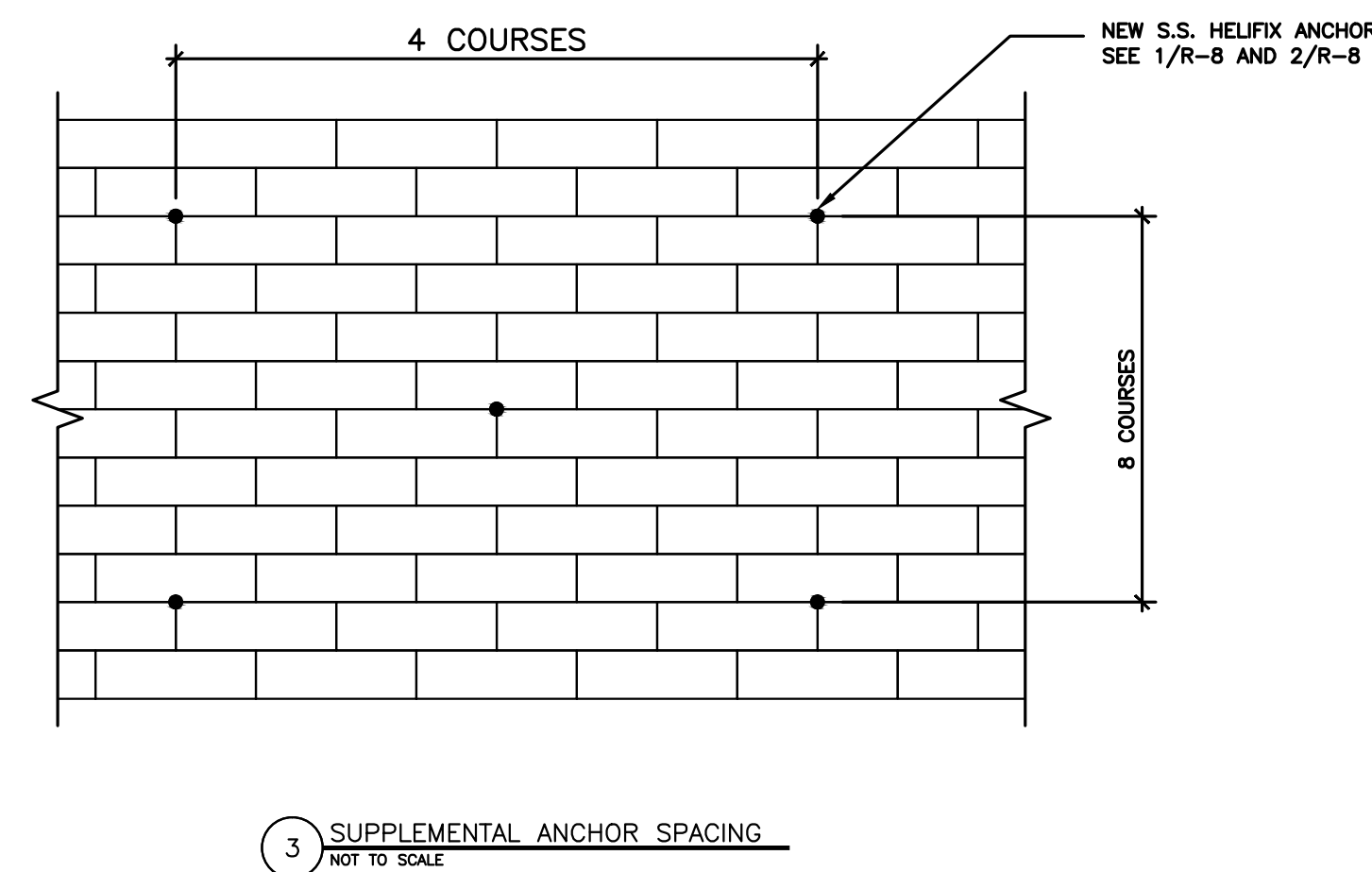
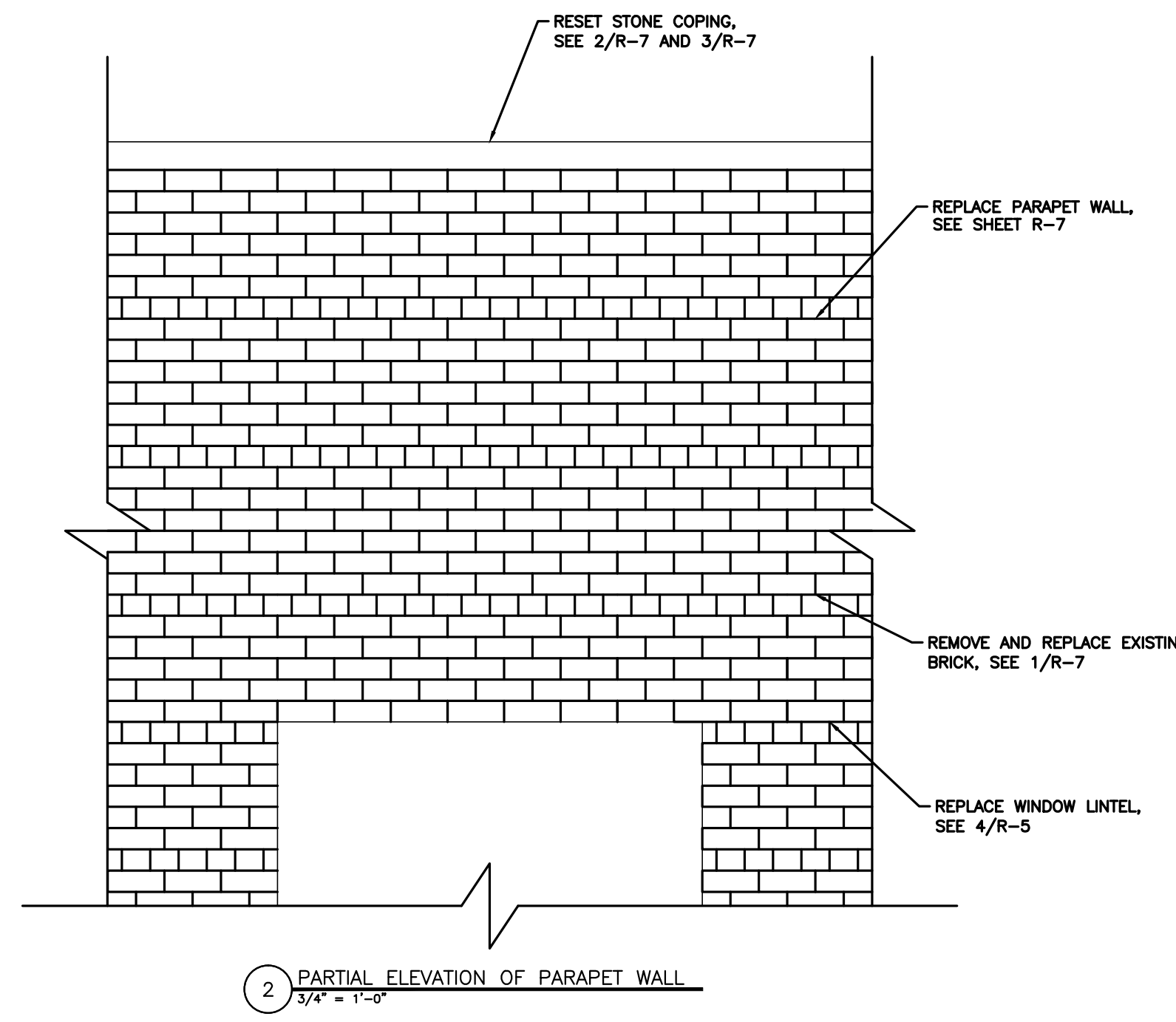
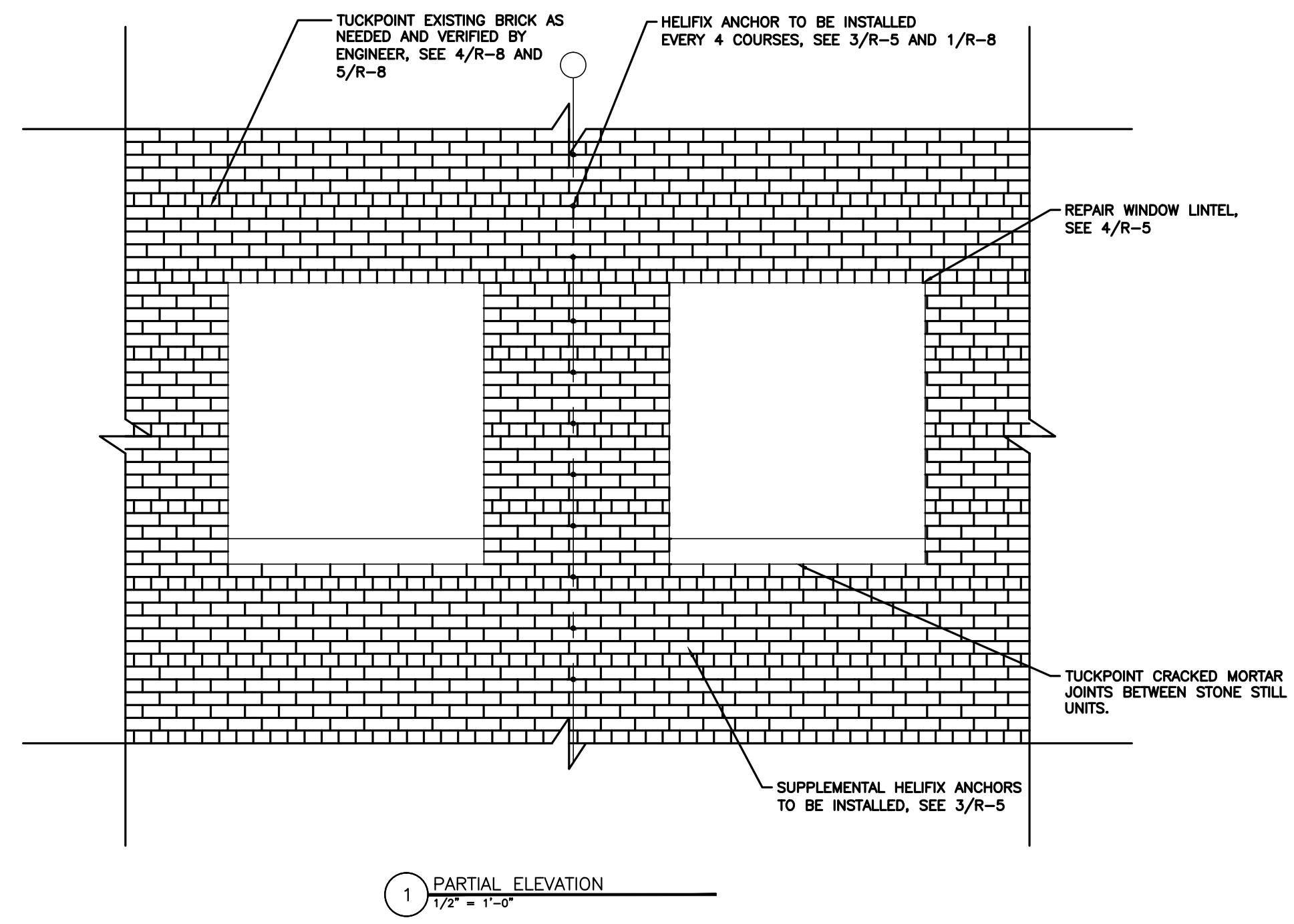
Headquarters & Laboratories: Northbrook, Illinois
Atlanta | Austin | Boston | Chicago | Cleveland | Dallas | Denver | Detroit
Honolulu | Houston | Los Angeles | Minneapolis | New Haven | New York
Princeton | San Francisco | Seattle | Washington, D.C.



Drawing Title CONCRETE REPAIRS AND EXPANSION JOINT	Project Title PHASE 17 V.A. CHICAGO Medical Center	Date 7/31/13
Approved: Chief of Engineering Date	Building Number & Floor BUILDING 1 ALL FLOORS	Project No. (CONSTRUCTION)
Approved: Director Date	Checked JEP	DRAWING NO. R4-17
	Drawn SBS	Dwg. 5 of 10
	Location 820 S. DAMEN Ave. CHICAGO IL - 60612	

DEPARTMENT OF
VETERANS AFFAIRS

three inches = one foot
one and one-half inches = one foot
one inch = one foot
three-quarters inch = one foot
one-half inch = one foot
three-eighths inch = one foot
one-quarter inch = one foot
one-eighth inch = one foot



JOINT WIDTH (c)	SEALANT DEPTH (d)	
	MIN	MAX
1/2	1/4	1/2
3/4	3/8	3/4
1	1/2	1

Revisions	Date
9	
8	
7	
6	
5	
4	
3	100% COMPLETION 7/31/13
2	95% COMPLETION 1/21/09
1	25% COMPLETION 11/06/08

FREGA ASSOCIATES, LTD.
ARCHITECTS ENGINEERS PLANNERS
411 S. Wells Street, 5th Floor
Chicago, IL 60607

WJE ENGINEERS
ARCHITECTS
MATERIALS SCIENTISTS

Wiss, Janney, Elstner Associates, Inc.
330 Pfingsten Road
Northbrook, Illinois 60062
847.272.7400 tel | 847.291.5189 fax
www.wja.com

Headquarters & Laboratories: Northbrook, Illinois
Atlanta | Austin | Boston | Chicago | Cleveland | Dallas | Denver | Detroit
Honolulu | Houston | Los Angeles | Minneapolis | New Haven | New York
Princeton | San Francisco | Seattle | Washington, D.C.

AREA LOCATION MAP

SITE PLAN

Drawing Title
BRICK AND SHELF ANGLE REPAIRS AT WINDOWS

Approved: *Chief of Engineering* Date
Approved: *Director* Date

Project Title
PHASE 17 V.A. CHICAGO Medical Center

Building Number & Floor
BUILDING 1 ALL FLOORS

Location
820 S. DAMEN Ave. CHICAGO IL - 60612

Checked: *JEP* Drawn: *SBS*

Date
7/31/13

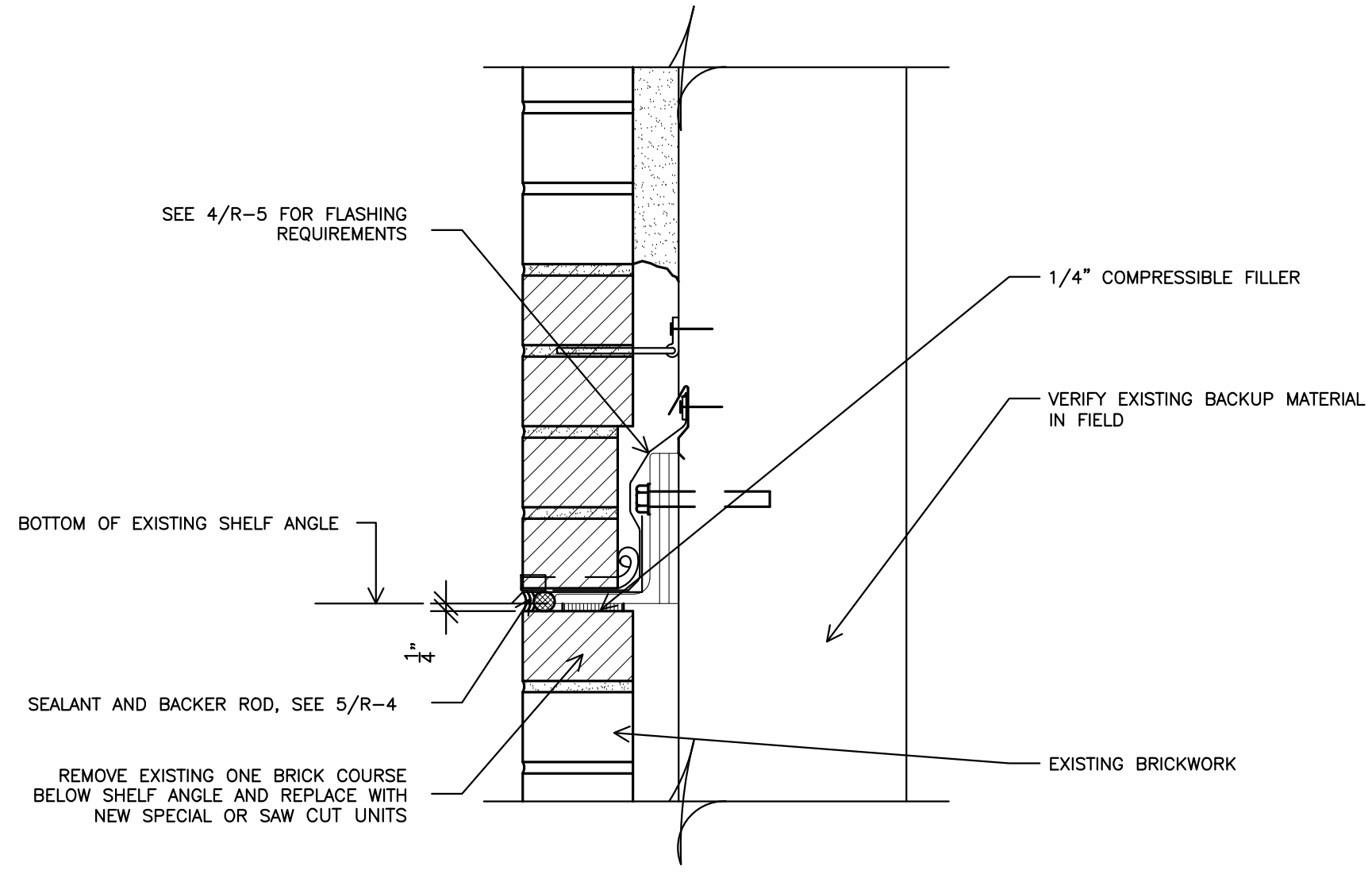
Project No.
(CONSTRUCTION)

DRAWING NO.
R5-17

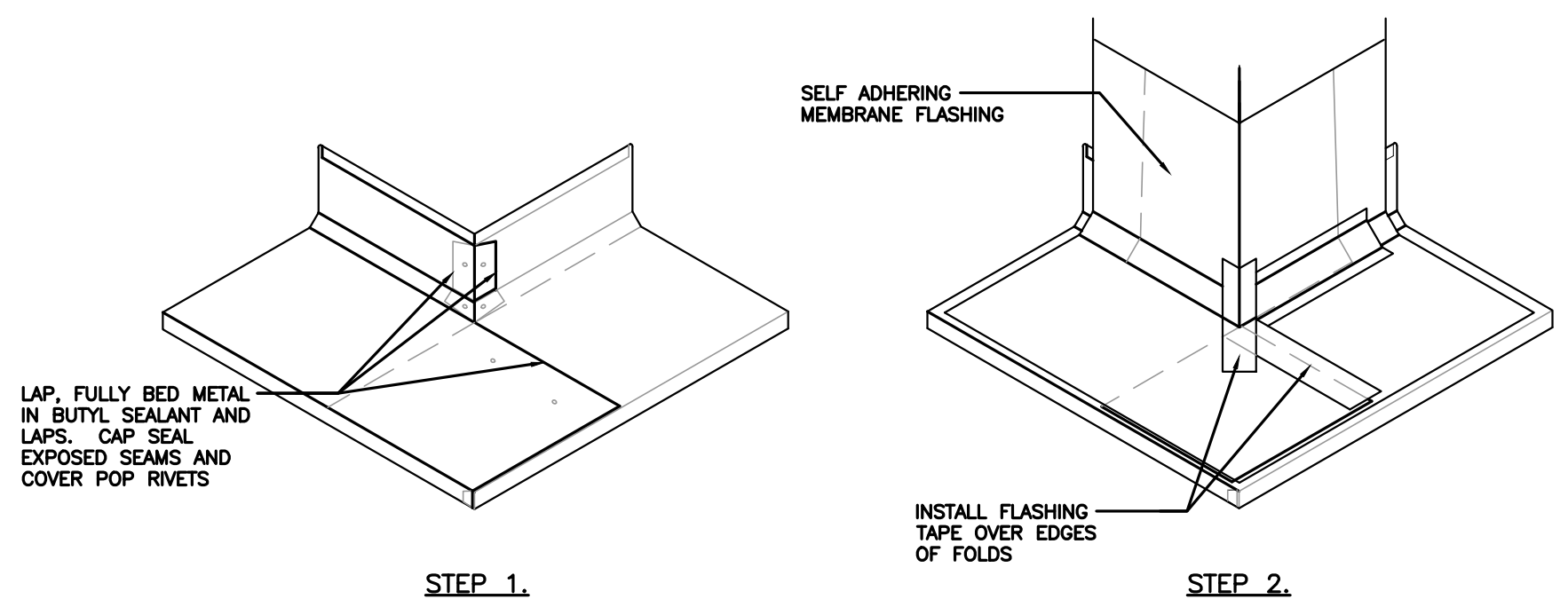
Dwg. 6 of 10

DEPARTMENT OF VETERANS AFFAIRS

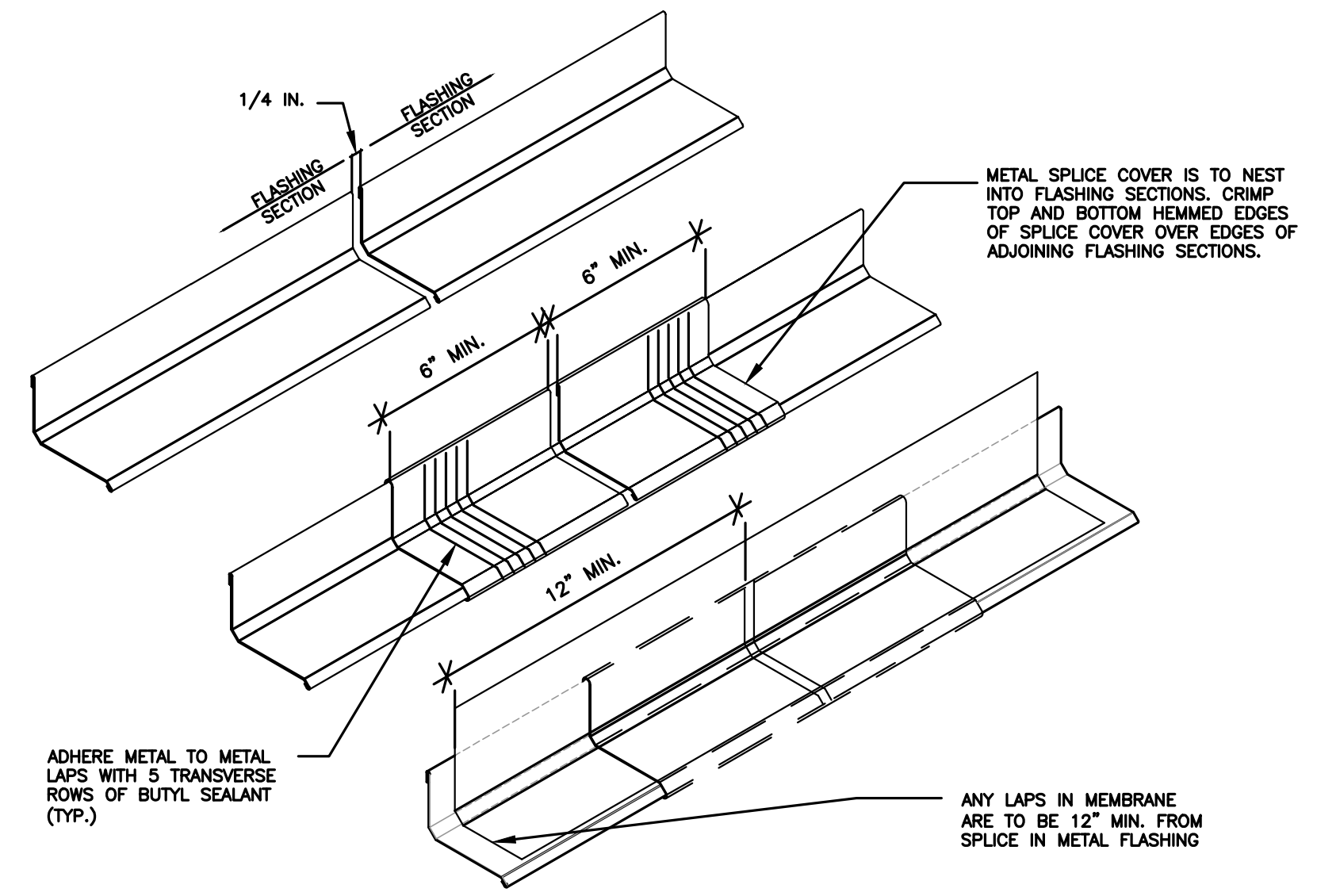
three inches = one foot
one and one-half inches = one foot
one inch = one foot
three-quarters inch = one foot
one-half inch = one foot
one-quarter inch = one foot
one-eighth inch = one foot



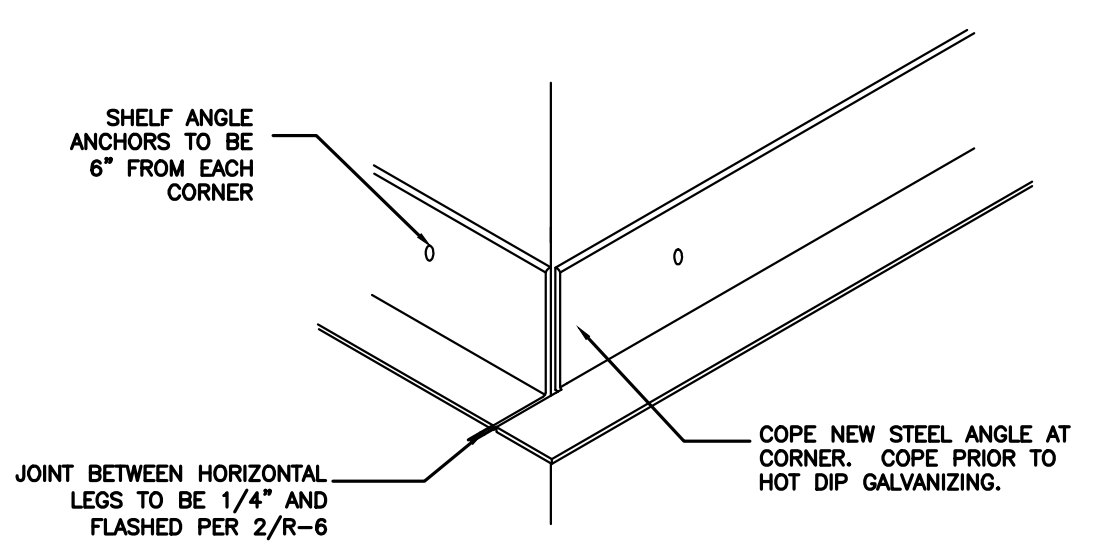
1 REPAIR AT SHELF ANGLE (AWAY FROM WINDOWS)
3" = 1'-0"



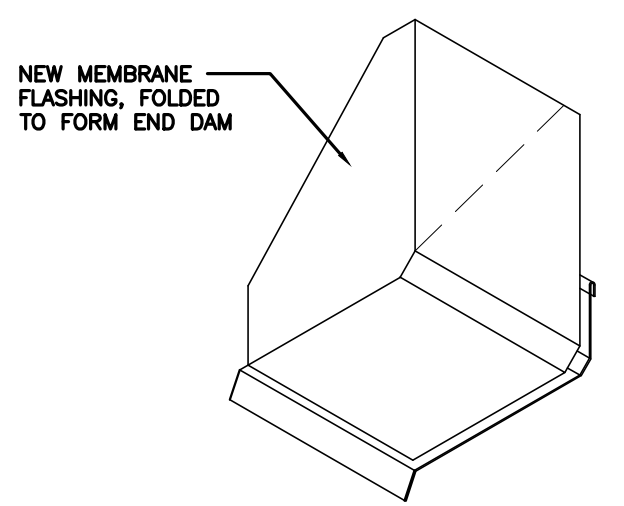
2 OUTSIDE CORNER FLASHING DETAIL
3" = 1'-0"



3 TYPICAL LAP IN FLASHING FOR SHELF ANGLES
3" = 1'-0"

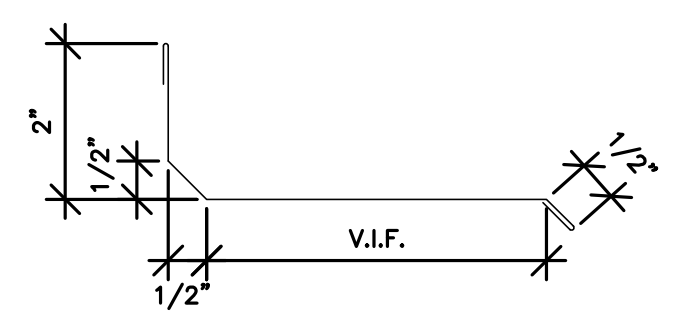


4 DETAIL AT SHELF ANGLE REPLACEMENT
NOT TO SCALE



NOTE: SHEET METAL AND MEMBRANE FLASHING SHALL BE CONTINUOUS AND COMPLETELY SEALED AT ALL INSIDE AND OUTSIDE CORNERS

5 MEMBRANE FLASHING END DAM
NOT TO SCALE



6 TYPICAL FLASHING PROFILE
NOT TO SCALE

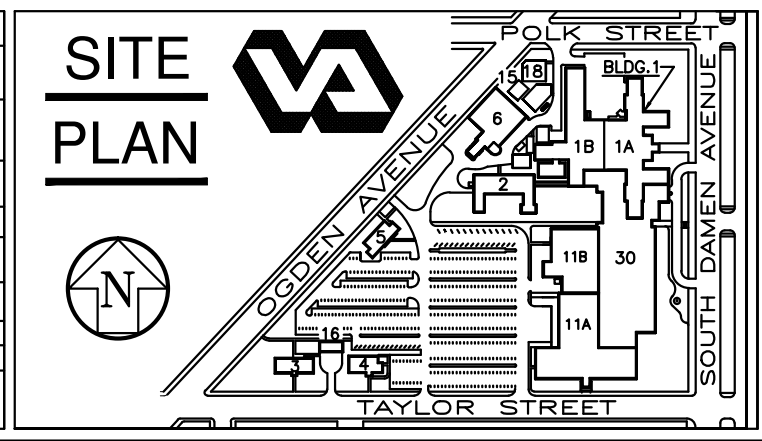
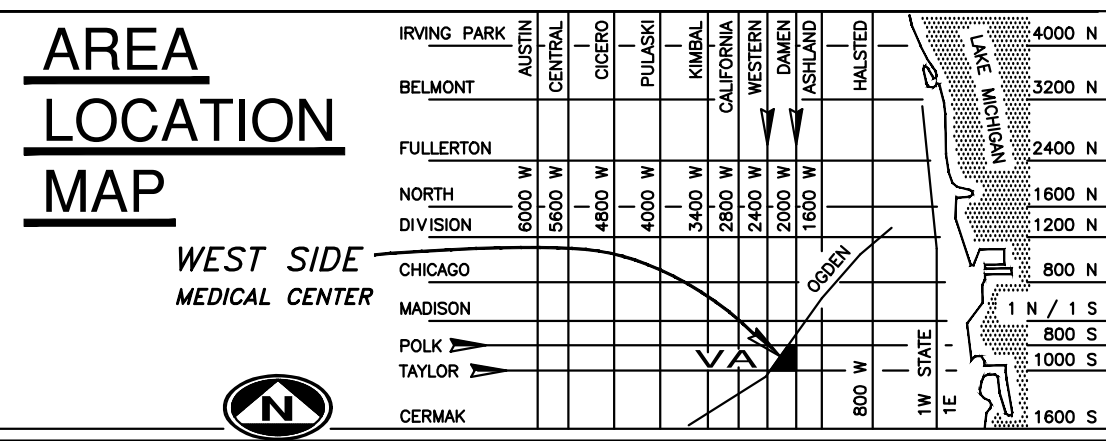
Revisions	Date
9	
8	
7	
6	
5	
4	
3	100% COMPLETION 7/31/13
2	95% COMPLETION 1/21/09
1	25% COMPLETION 11/06/08

FREGA ASSOCIATES, LTD.
ARCHITECTS ENGINEERS PLANNERS
411 S. Wells Street, 5th Floor
Chicago, IL 60607

WJE ENGINEERS
ARCHITECTS
MATERIALS SCIENTISTS

Wiss, Janney, Elstner Associates, Inc.
330 Pfingsten Road
Northbrook, Illinois 60062
847.272.7400 tel | 847.291.5189 fax
www.wja.com

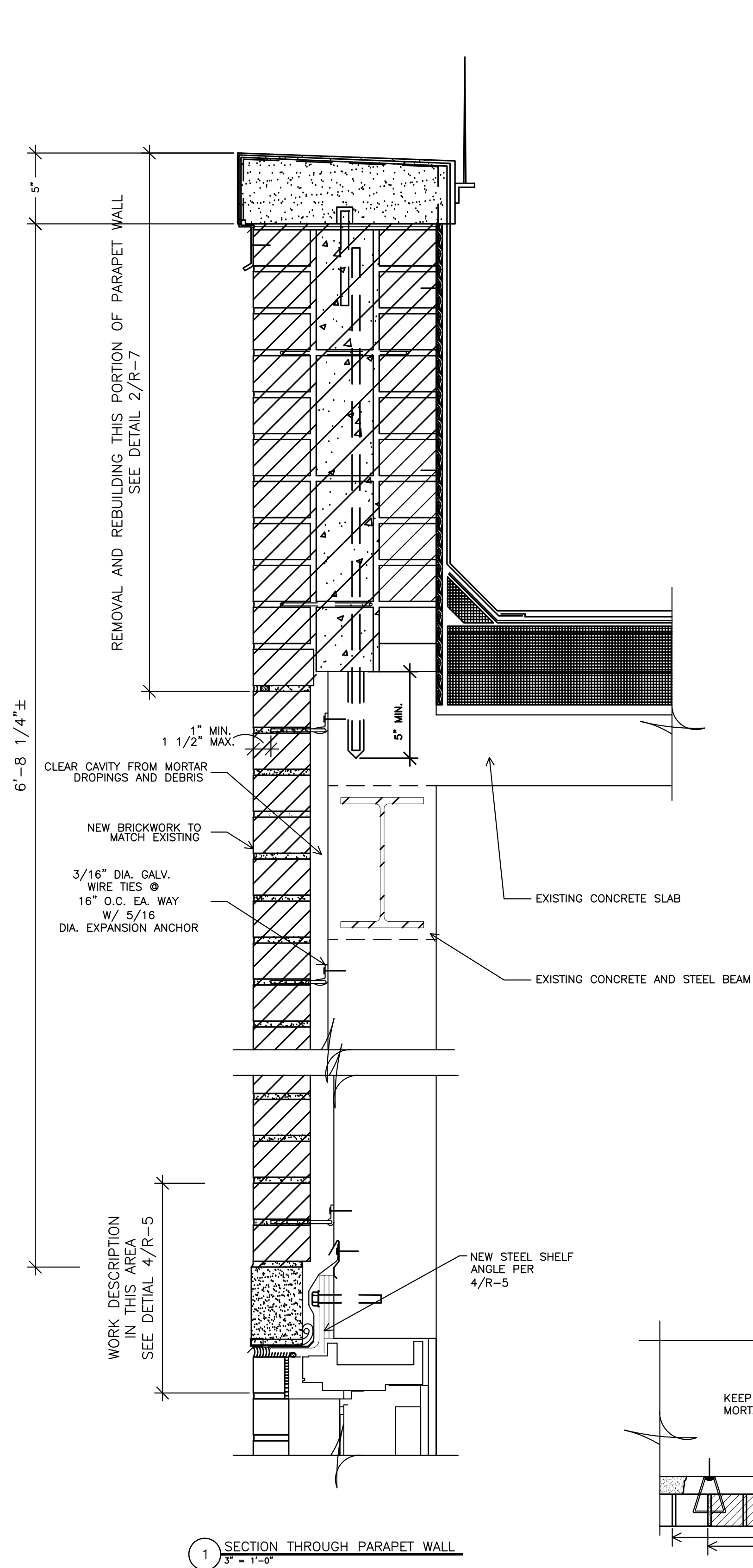
Headquarters & Laboratories: Northbrook, Illinois
Atlanta | Austin | Boston | Chicago | Cleveland | Dallas | Denver | Detroit
Honolulu | Houston | Los Angeles | Minneapolis | New Haven | New York
Princeton | San Francisco | Seattle | Washington, D.C.



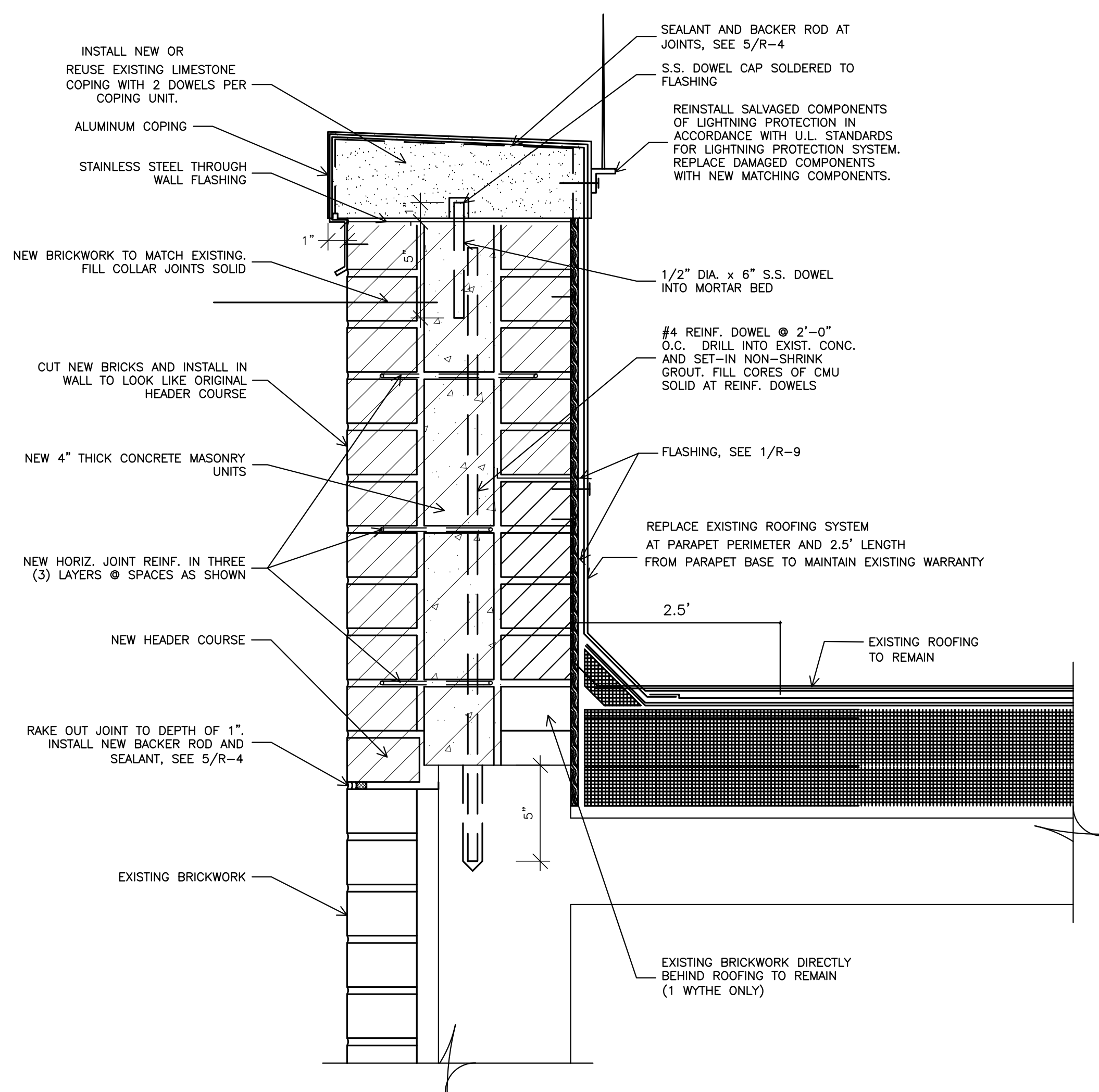
Drawing Title SHELF ANGLE REPAIRS AWAY FROM WINDOWS		Project Title PHASE 17 V.A. CHICAGO Medical Center		Date 7/31/13	
Approved: Chief of Engineering Date		Building Number & Floor BUILDING 1 ALL FLOORS		Project No. (CONSTRUCTION)	
Approved: Director Date		Checked JEP		Drawn SBS	
		Location 820 S. DAMEN Ave. CHICAGO IL - 60612		DRAWING NO. R6-17 Dwg. 7 of 10	

DEPARTMENT OF
VETERANS AFFAIRS

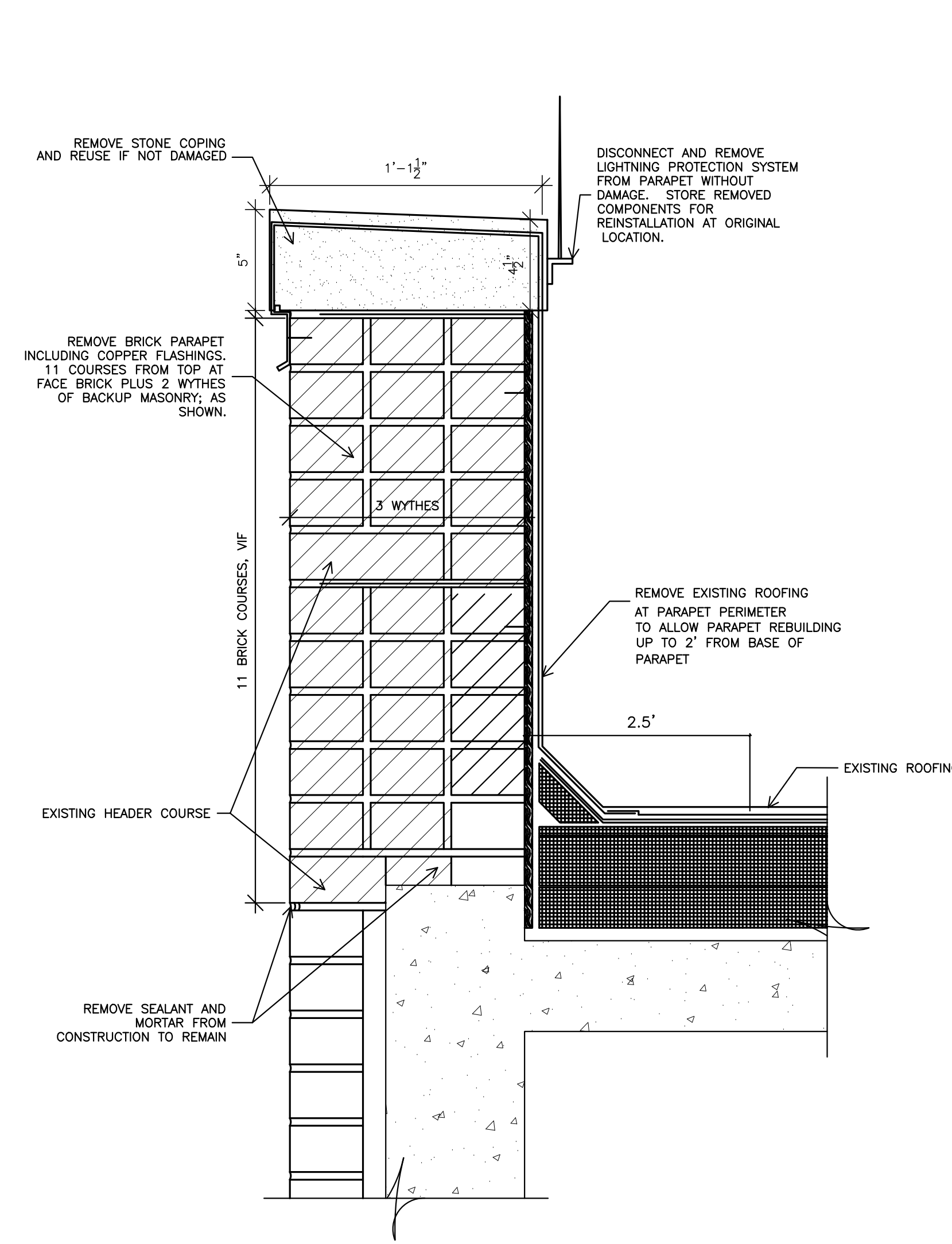
Scale bars and grid lines (A-F, 1-9) are provided along the left and top margins of the drawing.



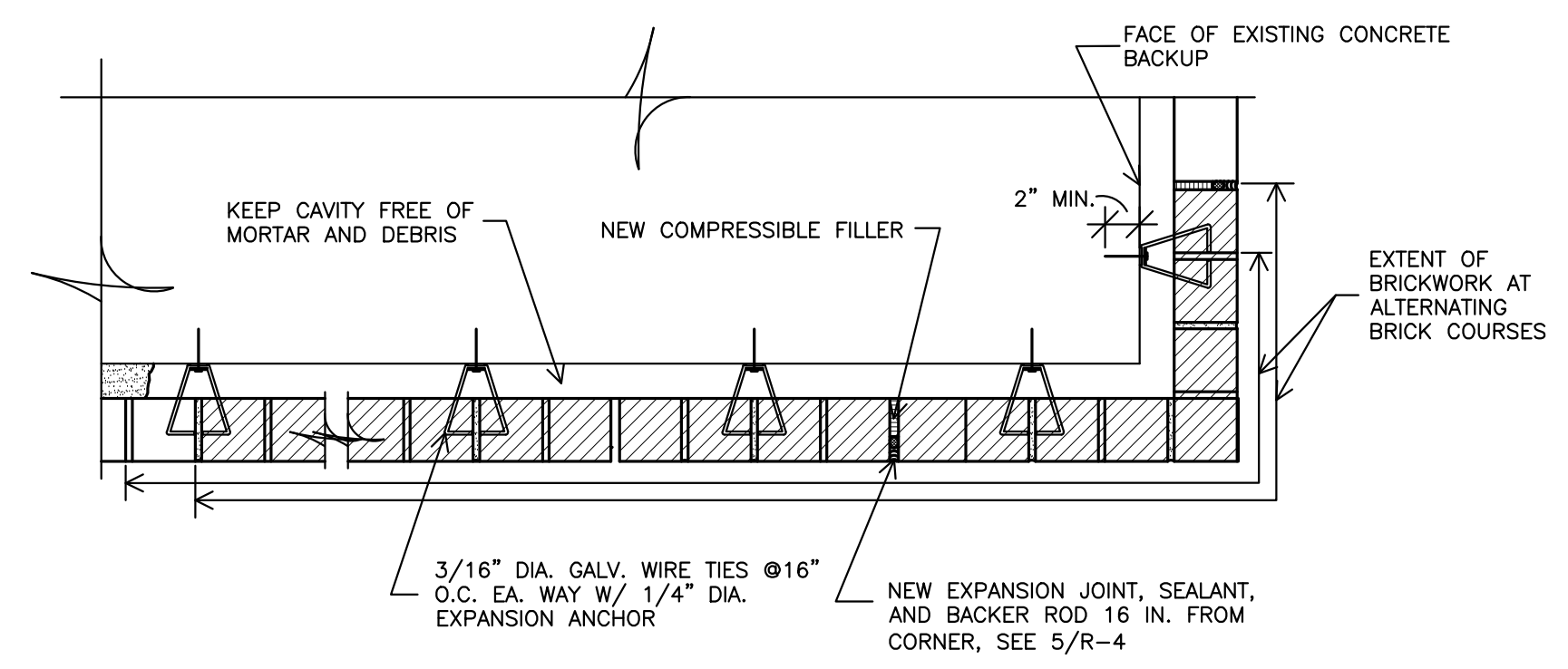
1 SECTION THROUGH PARAPET WALL
3" = 1'-0"



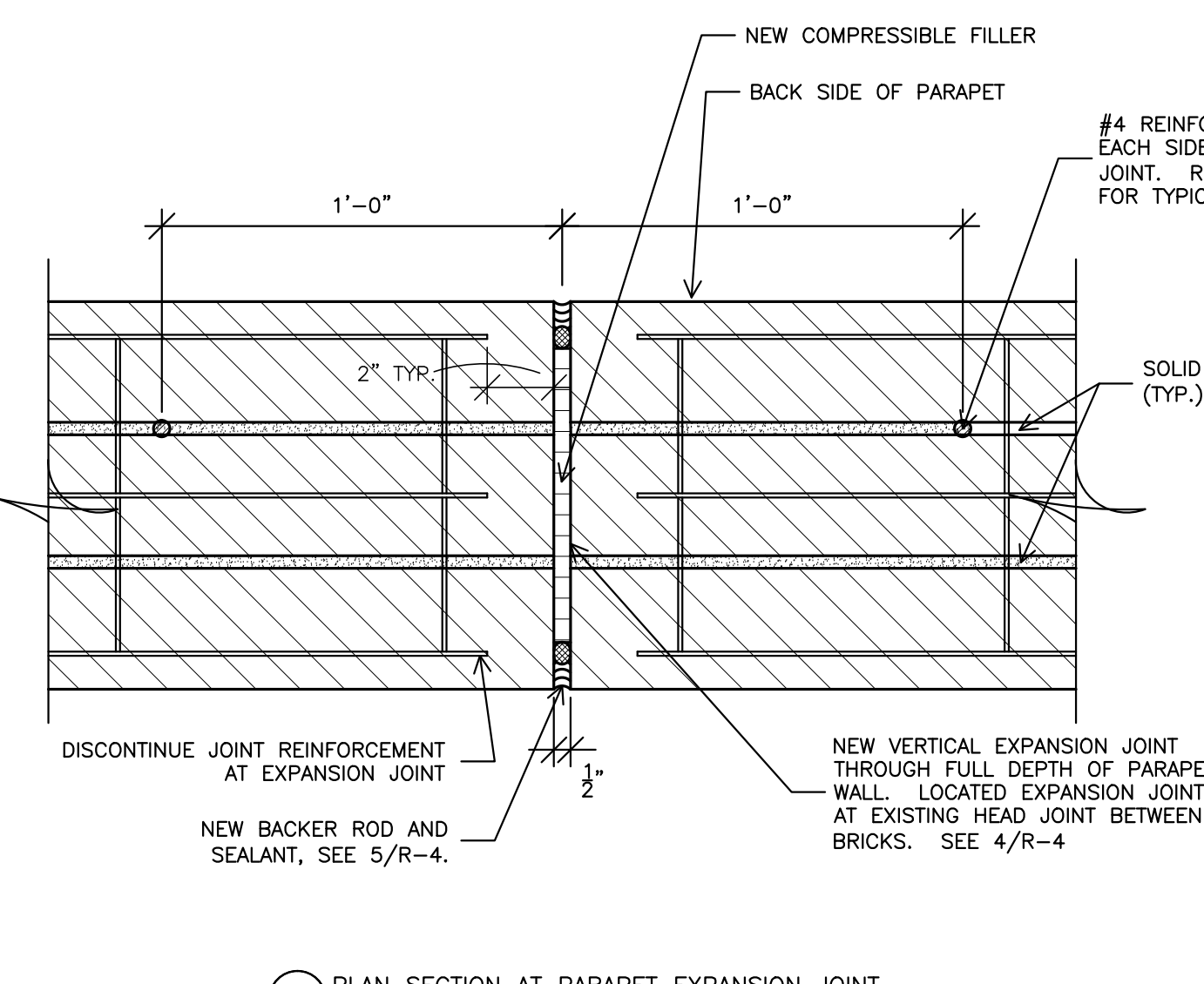
2 SECTION THROUGH NEW PARAPET WALL
3" = 1'-0"



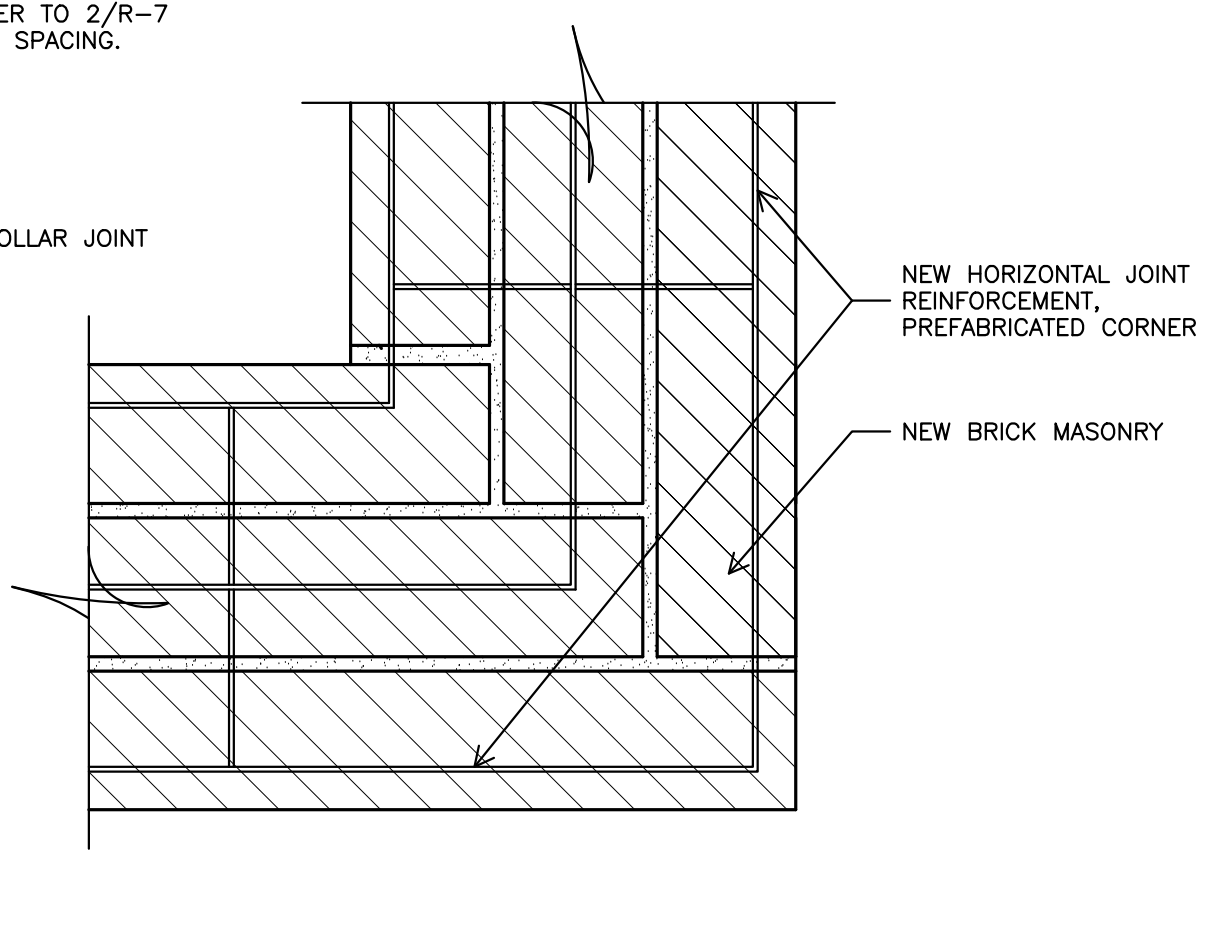
3 DEMOLITION OF EXISTING PARAPET WALL
3" = 1'-0"



4 PLAN SECTION
3" = 1'-0"



5 PLAN SECTION AT PARAPET EXPANSION JOINT
3" = 1'-0"



6 PLAN SECTION AT PARAPET CORNER
3" = 1'-0"

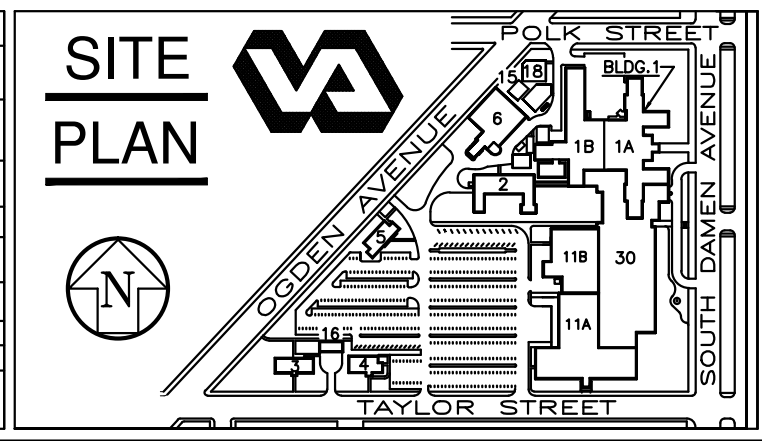
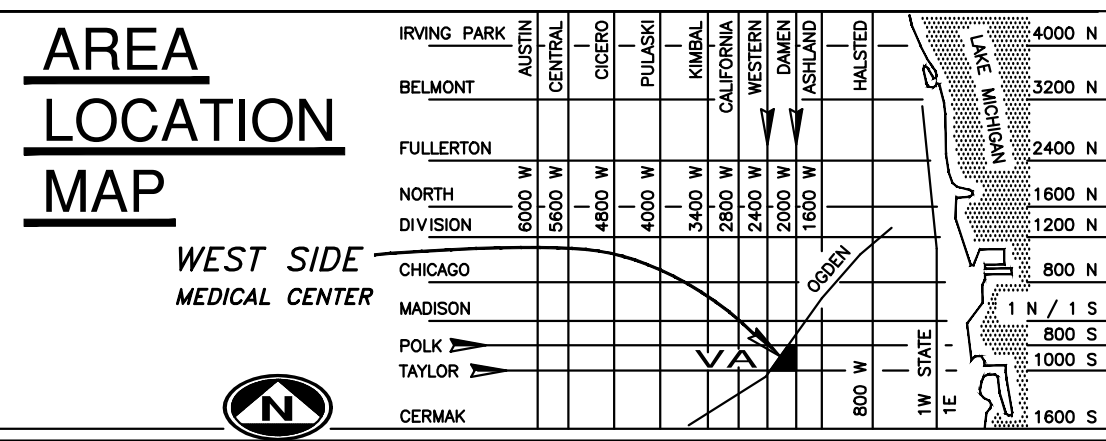
9		
8		
7		
6		
5		
4		
3	100% COMPLETION	7/31/13
2	95% COMPLETION	1/21/09
1	25% COMPLETION	11/06/08
Revisions		Date

FREGA ASSOCIATES, LTD.
ARCHITECTS ENGINEERS PLANNERS
411 S. Wells Street, 5th Floor
Chicago, IL 60607

WJE ENGINEERS
ARCHITECTS
MATERIALS SCIENTISTS

Wiss, Janney, Elstner Associates, Inc.
330 Pfingsten Road
Northbrook, Illinois 60062
847.272.7400 tel | 847.291.5189 fax
www.wja.com

Headquarters & Laboratories: Northbrook, Illinois
Atlanta | Austin | Boston | Chicago | Cleveland | Dallas | Denver | Detroit
Honolulu | Houston | Los Angeles | Minneapolis | New Haven | New York
Princeton | San Francisco | Seattle | Washington, D.C.

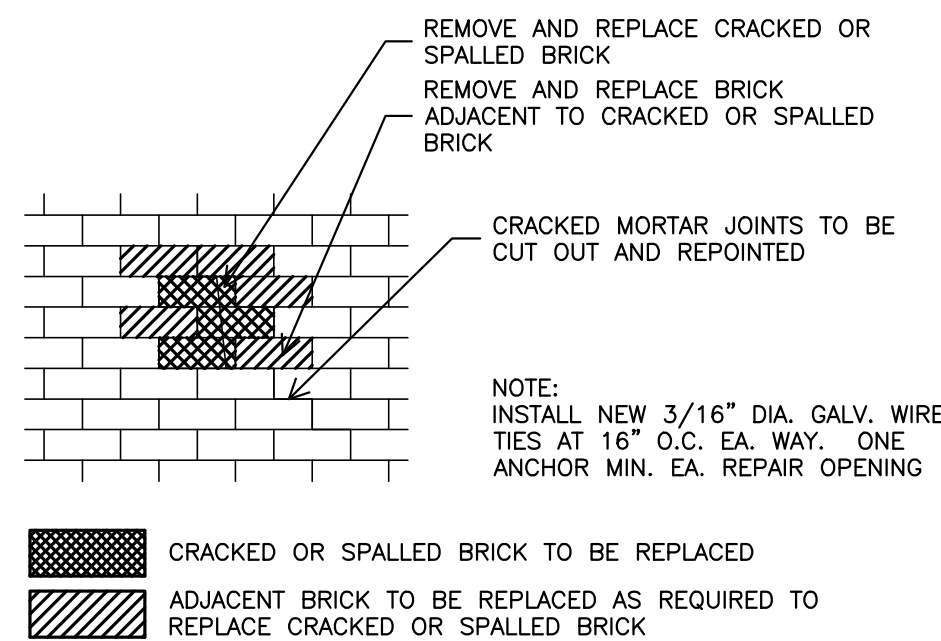
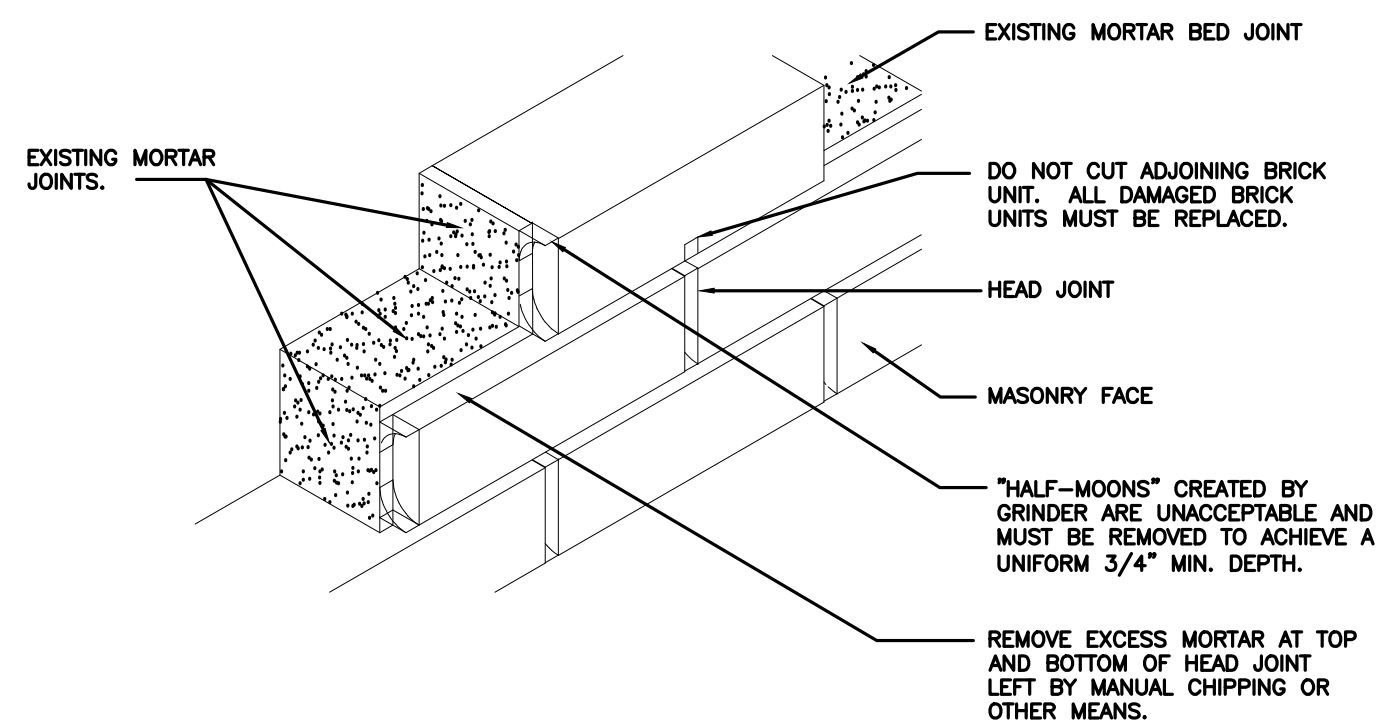
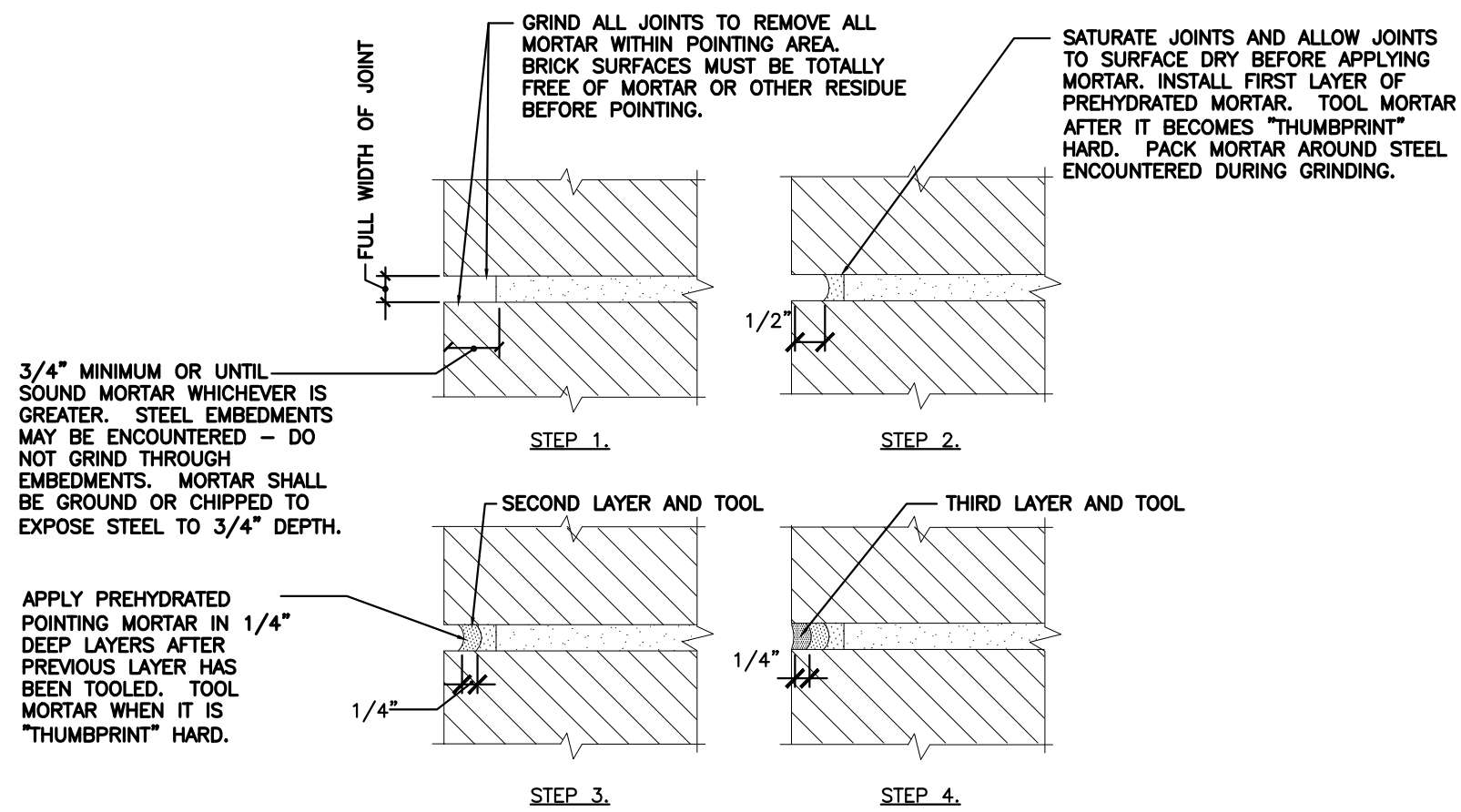
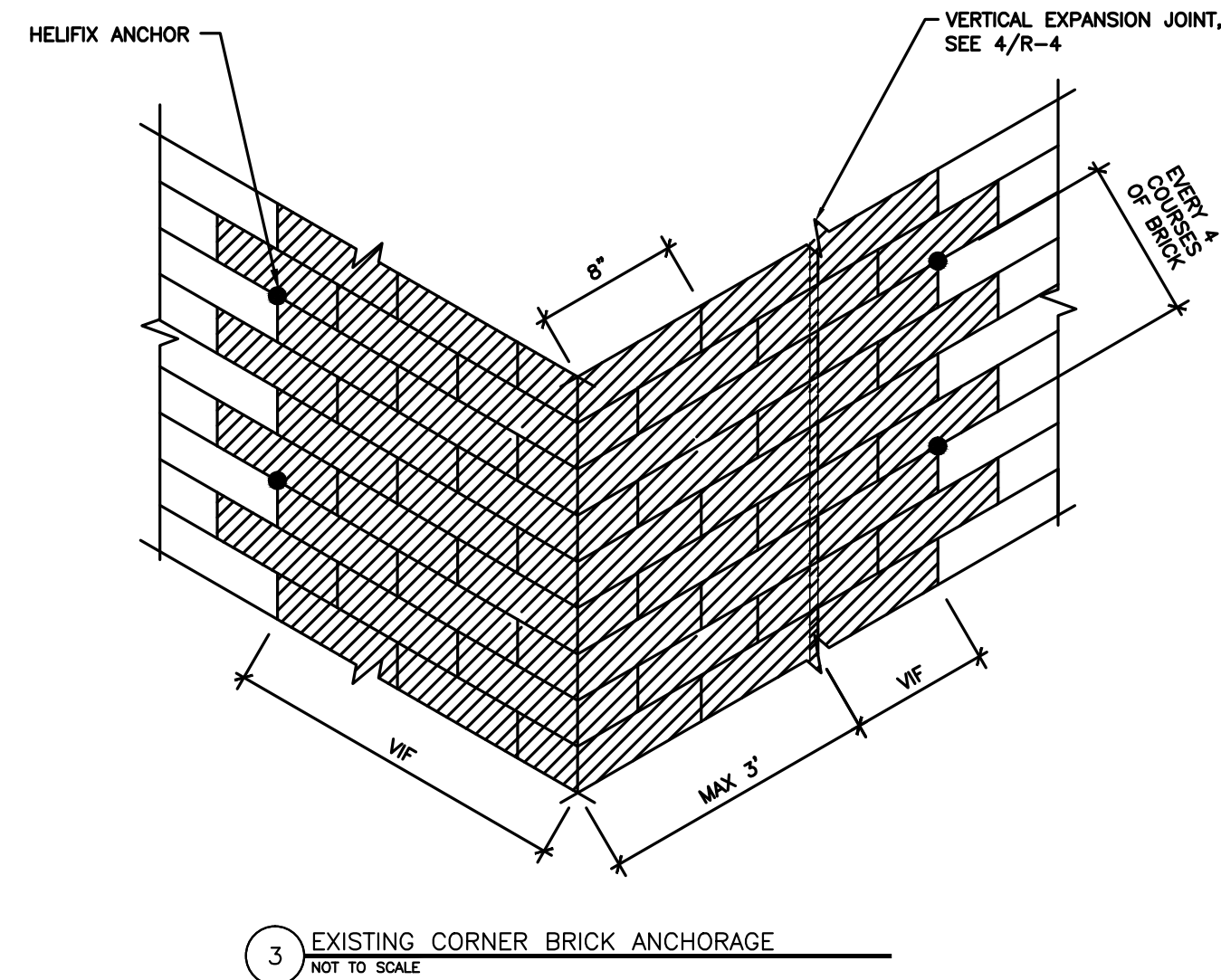
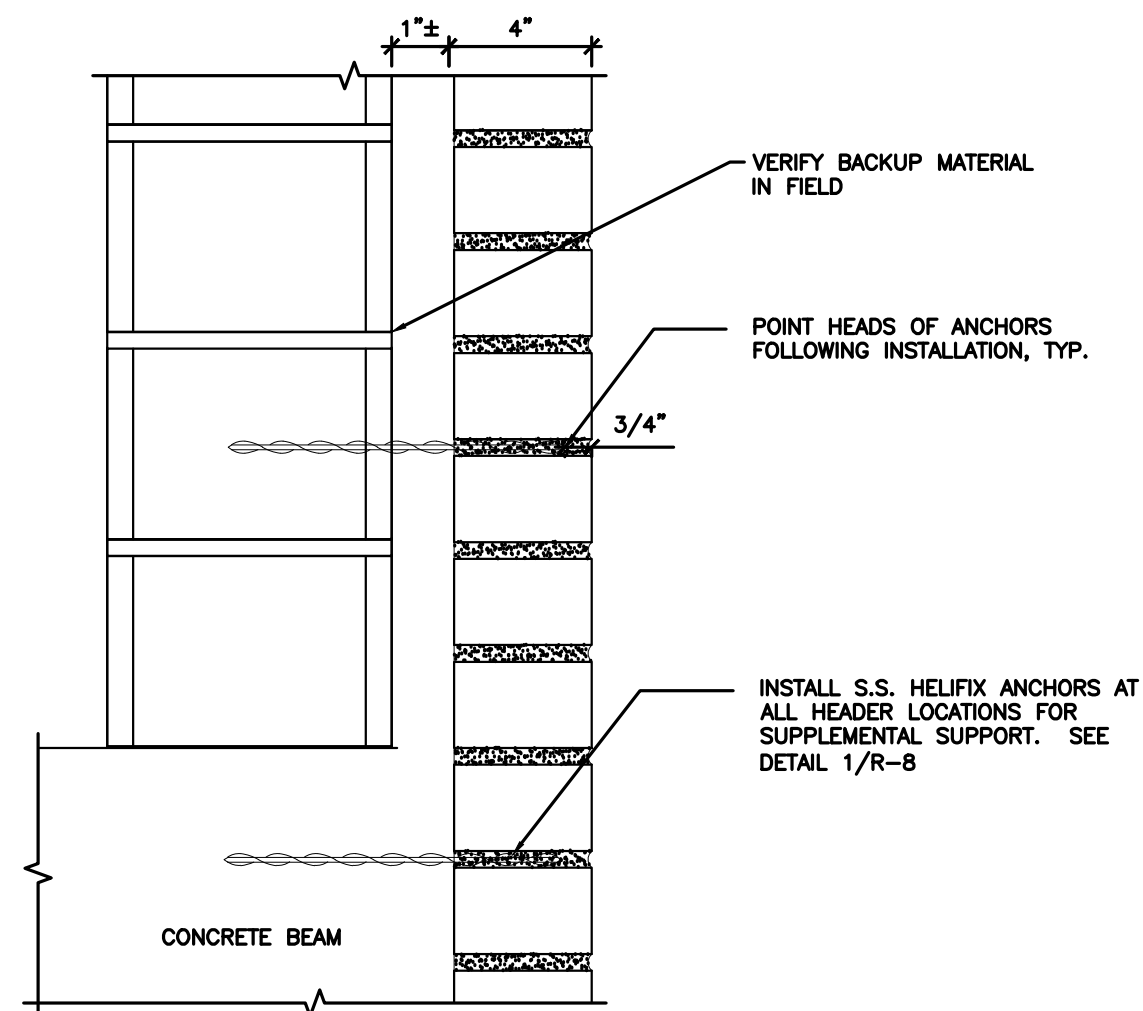
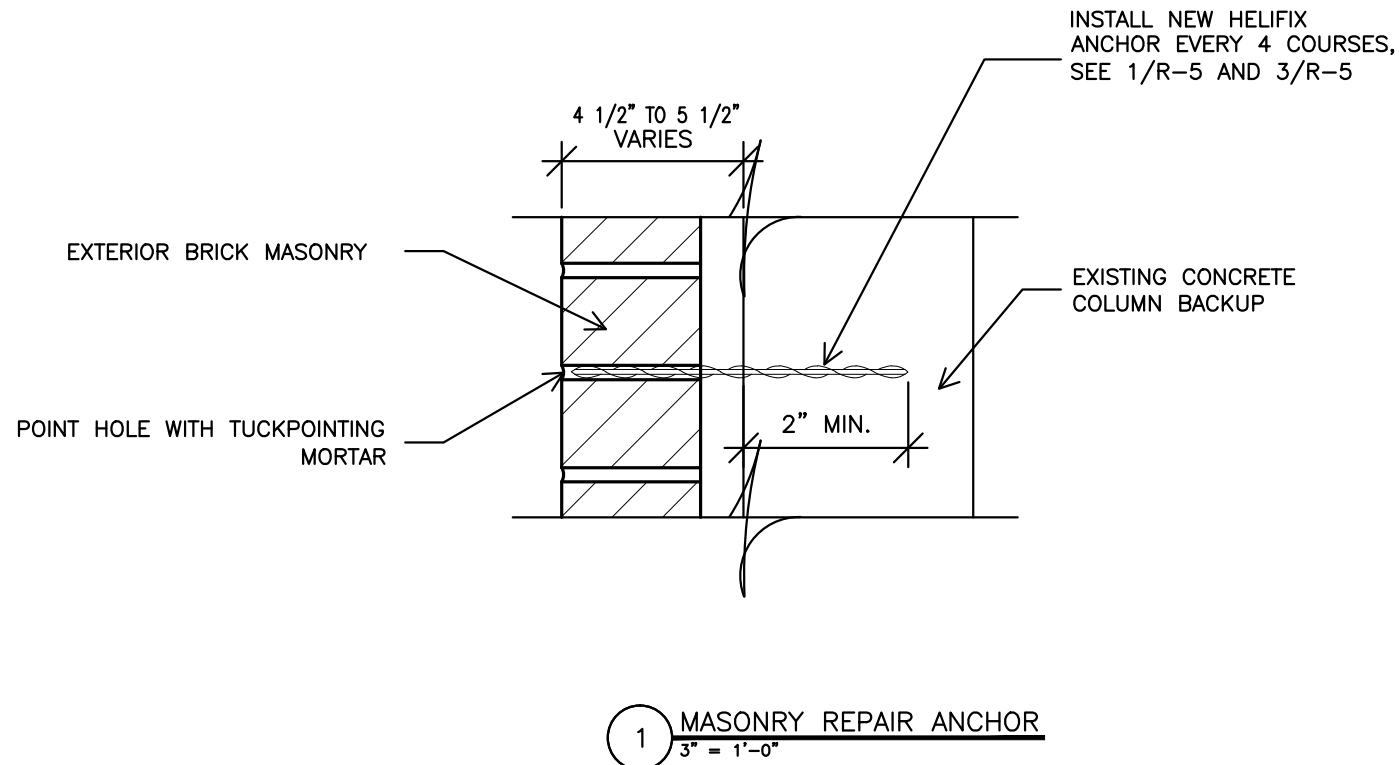


Drawing Title PARAPET WALL DETAILS	
Approved: Chief of Engineering	Date
Approved: Director	Date

Project Title PHASE 17 V.A. CHICAGO Medical Center		Date 7/31/13
Building Number & Floor BUILDING 1 ALL FLOORS		Project No. (CONSTRUCTION)
Checked JEP	Drawn SBS	Drawing No. R7-17
Location 820 S. DAMEN Ave. CHICAGO IL - 60612		Dwg. 8 of 10

DEPARTMENT OF
VETERANS AFFAIRS

one-eighth inch = one foot
one-quarter inch = one foot
three-eighths inch = one foot
one-half inch = one foot
three-quarters inch = one foot
one inch = one foot
one and one-half inches = one foot
three inches = one foot



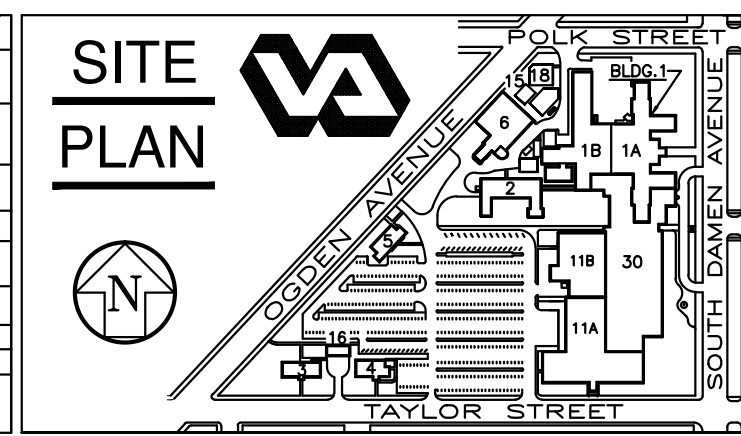
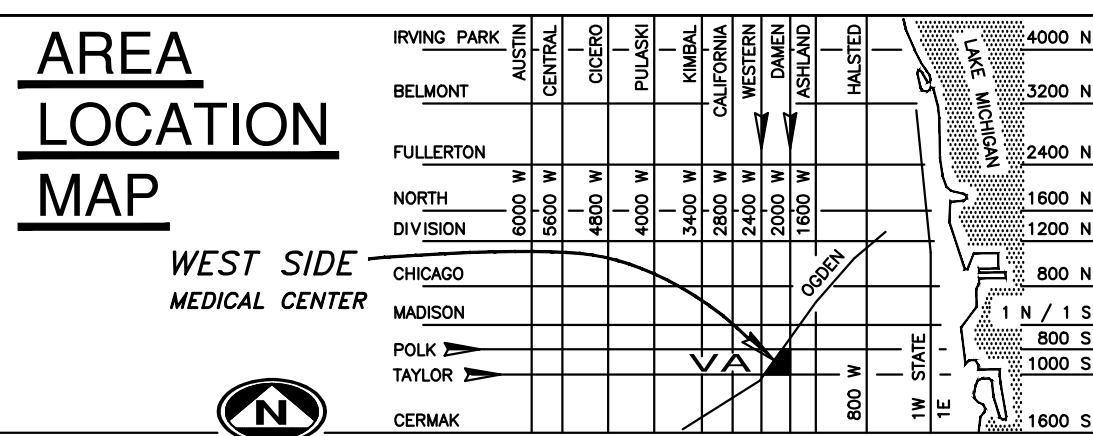
9		
8		
7		
6		
5		
4		
3	100% COMPLETION	7/31/13
2	95% COMPLETION	1/21/09
1	25% COMPLETION	11/06/08
Revisions		Date

FREGA ASSOCIATES, LTD.
ARCHITECTS ENGINEERS PLANNERS
411 S. Wells Street, 5th Floor
Chicago, IL 60607

WJE ENGINEERS
ARCHITECTS
MATERIALS SCIENTISTS

Wiss, Janney, Elstner Associates, Inc.
330 Pfingsten Road
Northbrook, Illinois 60062
847.272.7400 tel | 847.291.5189 fax
www.wja.com

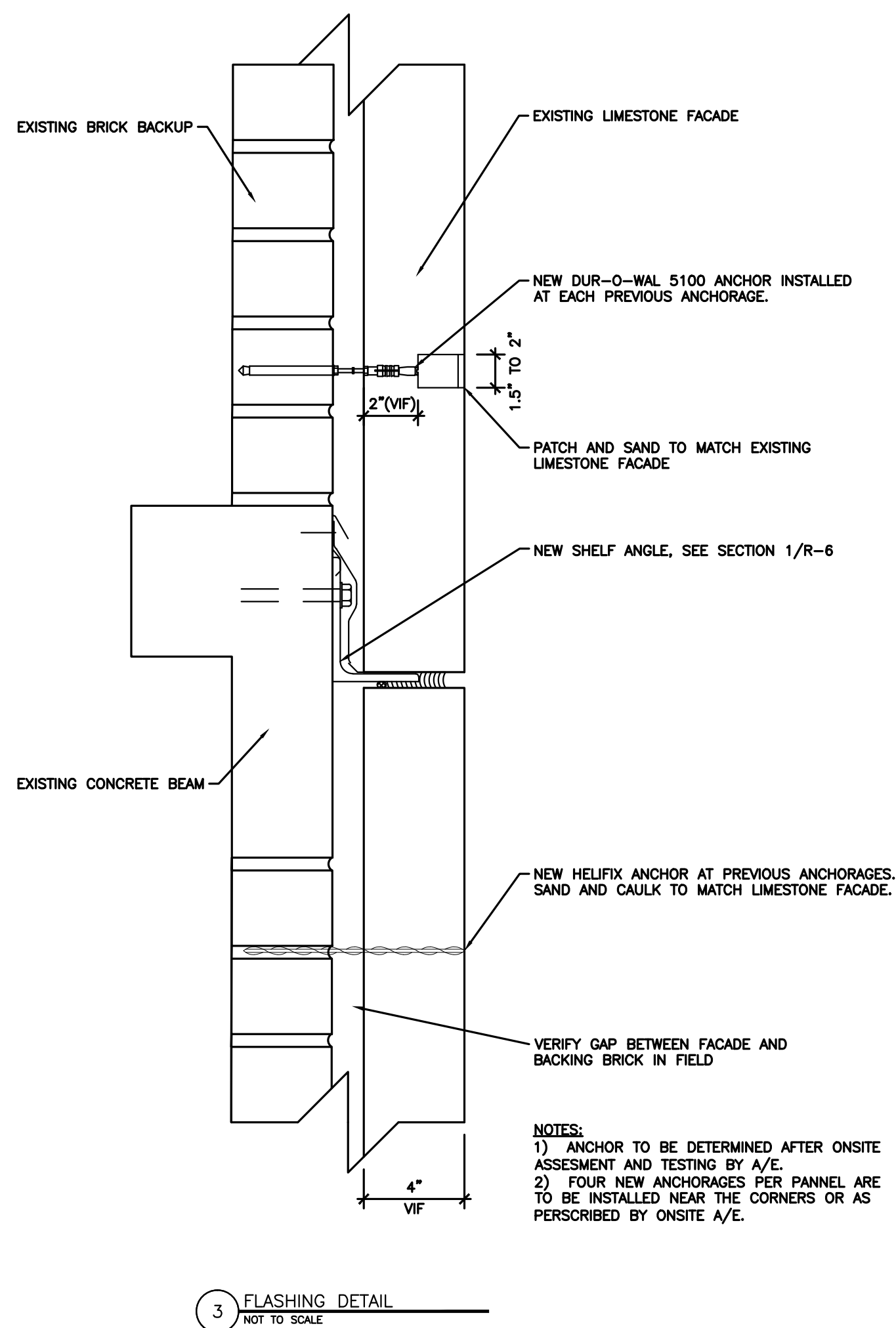
Headquarters & Laboratories: Northbrook, Illinois
Atlanta | Austin | Boston | Chicago | Cleveland | Dallas | Denver | Detroit
Honolulu | Houston | Los Angeles | Minneapolis | New Haven | New York
Princeton | San Francisco | Seattle | Washington, D.C.




Drawing Title	
MISCELLANEOUS REPAIR DETAILS	
Approved: Chief of Engineering	Date
Approved: Director	Date

Project Title		Date	
PHASE 17		7/31/13	
V.A. CHICAGO		Project No.	
Medical Center		(CONSTRUCTION)	
Building Number & Floor	Checked	Drawn	Drawing No.
BUILDING 1	JEP	SBS	R8-17
ALL FLOORS		Dwg. 9 of 10	
Location		820 S. DAMEN Ave. CHICAGO IL - 60612	

DEPARTMENT OF
VETERANS AFFAIRS





FREGA ASSOCIATES, L.T.D.
ARCHITECTS ENGINEERS PLANNERS


411 S. Wells Street, 5th Floor
Chicago, IL 60607

Wiss, Janney, Elstner Associates, Inc.

330 Pingsten Road
Northbrook, Illinois 60062

847.272.7400 tel | 847.291.5189 fax

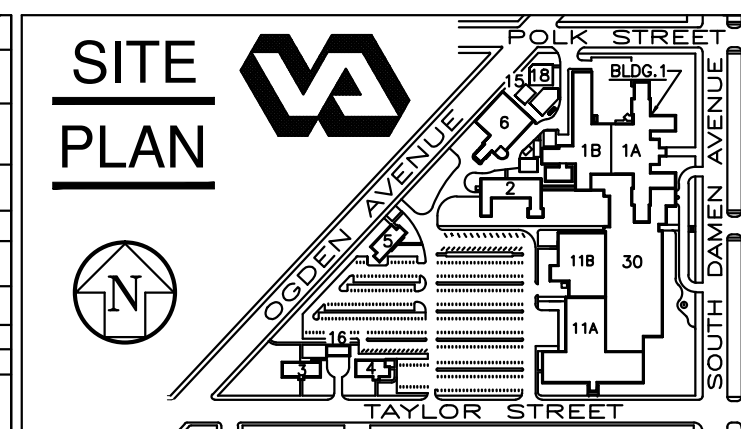
www.wje.com



**ENGINEERS
ARCHITECTS
MATERIALS SCIENTISTS**

Headquarters | Laboratories

Atlanta | Austin | Boston | Chicago | Cleveland | Dallas | Denver | Detroit
Honolulu | Houston | Los Angeles | Minneapolis | New Haven | New York
Princeton | San Francisco | Seattle | Washington, D.C.

DEPARTMENT OF
VETERANS AFFAIRS