

C:\ntfl14342A-2-13-11JC.nt
2/14/2011 9:50:11 AM

[illegible]

PROJECT TEAM

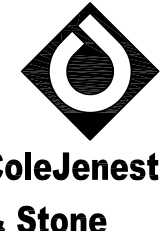
ARCHITECTURE:
HDR Architecture, Inc.
440 South Church Street
Suite 1000
Charlotte, NC 28202
www.hdrinc.com
704-338-6700

STRUCTURAL:
HDR Architecture, Inc.
17111 Preston Road
Suite 300
Dallas, Texas 75248
www.hdrinc.com
972-960-4000

**MECHANICAL/ELECTRICAL/
PLUMBING/ FIRE PROTECTION :**
Charlotte Engineers
5838 Monroe Road, Suite 100.
Charlotte, NC 28212
www.charlotteengineers.com
704-531-3000



CIVIL / LANDSCAPE:
ColeJenest & Stone
200 South Tryon
Suite 1400
Charlotte, NC 28202
www.colejeneststone.com
704-376-1555



ARCHITECTS/ENGINEERS



HDR Architecture Inc. Project Number: 202067 - 143442

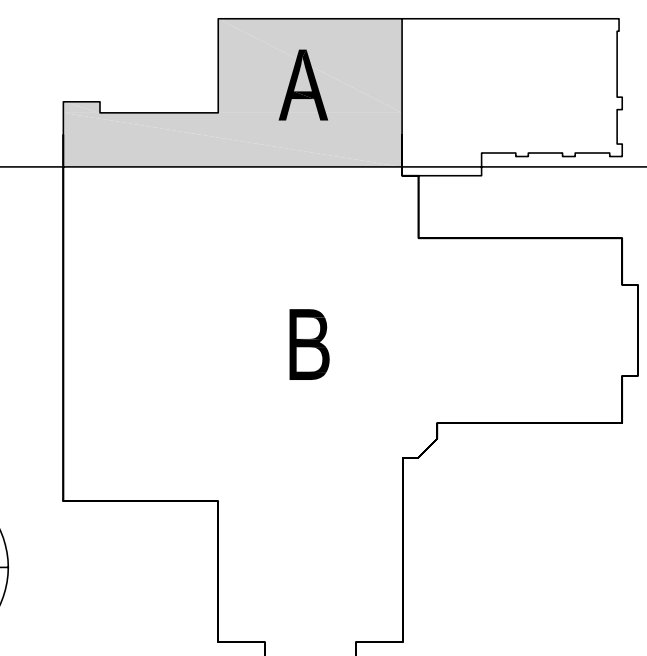


HDR Architecture Inc.
440, S. Church Street, Suite 1000, Charlotte, NC 28202
Phone: 704.338.8700 Fax: 704.338.8760

Drawing Title

ELECTRICAL - PARTIAL SECOND
FLOOR PLAN - SPECIAL SYSTEMS

Approved : Project Director



WALL RATING LEGEND

1 HOUR FIRE

1 HOUR FIRE AND SMOKE

2 HOUR FIRE

2 HOUR FIRE AND SMOKE

3 HOUR FIRE

3 HOUR FIRE AND SMOKE

4 HOUR FIRE

4 HOUR FIRE AND SMOKE

SMOKE BARRIER

SMOKE SUITE

Office of
Construction
and Facilities
Management



GENERAL SHEET NOTES

- A. ALL CAMERA TYPE AND LOCATIONS SHALL BE COORDINATED WITH THE COTR.
- B. NURSE CALL DEVICES (LOCATED WITHIN PATIENT ROOMS) SHALL BE PROVIDED WITH PROVISIONS FOR THE STAFF TO SILENCE THE EMERGENCY CALLS AT THE MASTER NURSE CALL STATION.
- C. NURSE CALL DEVICES SHALL BE SECURED WITH TAMPER RESISTANT SCREWS/FASTENERS.

KEYED SHEET NOTES

- ① NO WORK IN THIS AREA.
- ② INTERCOM MASTER STATION. COORDINATE THE EXACT LOCATION WITH THE COTR.
- ③ PROVIDE 3/4"x8"-0H. FOR LENGTH SHOWN. FIRE RESISTANT TREATED PLYWOOD PAINTED WITH FIRE RETARDANT PAINT, ON BOTH SIDES AND EDGES. PLYWOOD SHALL BE INSTALLED WITH FIRE RESISTANT TREATED LABEL FACING INTO THE ROOM. THE PLYWOOD MAY BE PAINTED, EXCEPT FOR THE LABEL, PRIOR TO INSPECTION BY THE ELECTRICAL INSPECTOR. ONLY AFTER THE ELECTRICAL INSPECTOR HAS SIGNED OFF ON THIS ROOM SHALL THE LABEL BE PAINTED.

ELECTRICAL - PARTIAL SECOND FLOOR PLAN - SPECIAL SYSTEMS

$$1/8'' = 1'-0''$$