



Department of VETERANS AFFAIRS

VA MEDICAL CENTER DURHAM, NORTH CAROLINA

RENOVATE 8th FLOOR B-WING IN BUILDING 1

ARCHITECT:

RGG ARCHITECTS, PLLC
DURHAM, NORTH CAROLINA

PME ENGINEER:

EDMONDSON ENGINEERS, P.A.
DURHAM, NORTH CAROLINA

GENERAL NOTES:

1. CONTRACTOR MUST OBTAIN HOT WORK PERMITS DAILY FOR WELDING, SOLDERING, TORCH CUTTING AND BURNING FROM THE VA MEDICAL CENTER FIRE & SAFETY OFFICE BEFORE BEGINNING WORK OF THIS TYPE. FIRE WATCH IS REQUIRED. CONTRACTOR TO FURNISH FIRE EXTINGUISHERS.
2. NO SMOKING EXCEPT IN DESIGNATED AREAS OUTSIDE OF BLDG.
3. ALL DIMENSIONS SHALL BE VERIFIED CAREFULLY AND ANY DISCREPANCIES BROUGHT TO THE IMMEDIATE ATTENTION OF THE VA CHIEF ENGINEER.
4. GENERAL CONTRACTOR SHALL PROTECT EXISTING CORRIDORS, ELEVATORS, DOORS, ETC. AND REPAIR ANY DAMAGE RESULTING FROM RENOVATION, DEMOLITION OR TRANSPORTATION OF MATERIALS ASSOCIATED WITH THIS PROJECT.
5. ANY CEILING TILE, GRID SYSTEM, LIGHT FIXTURE, AIR GRILLES, ETC. REMOVED BY THE CONTRACTOR TO FACILITATE THE WORK SHALL BE REPLACED IN THE ORIGINAL CONDITION AT THE CONCLUSION OF THE WORK. THIS IS IN AREAS EITHER ADJACENT TO THE PROJECT AND/OR IN AREAS WHERE THERE IS NO CEILING.
6. NOTIFY THE VA CHIEF ENGINEER PRIOR TO ANY CORE DRILLING. THIS MUST BE SCHEDULED 7 DAYS IN ADVANCE.
7. WOOD BLOCKING IS NOT ACCEPTABLE AS A SUBSTITUTE FOR SHEET METAL BLOCKING.
8. WHEN REPAIRING WALLS, MATCH EXISTING CONDITIONS, UNLESS OTHERWISE NOTED.
9. THE VA CHIEF ENGINEER SHALL BE GIVEN THREE WEEKS NOTICE, IN WRITING, BEFORE ANY UTILITY SYSTEM SHUTDOWN IS REQUIRED.
10. REPAIR OR REPLACE ALL PROPERTY OF THE OWNER DAMAGED BY CONSTRUCTION, INCLUDING BUT NOT LIMITED TO: EQUIPMENT, FLOORS, BASES, CEILING TILES, AND WALLS.
11. IT WILL BE THE RESPONSIBILITY OF THE CONTRACTOR TO IMMEDIATELY REPAIR ANY DAMAGED FIRE SPRINKLER PIPING DURING DEMOLITION AND CONSTRUCTION.
12. TEMPORARY LIGHTING WILL BE THE RESPONSIBILITY OF THE CONTRACTOR DURING DEMOLITION AND CONSTRUCTION.
13. THE DRAWINGS AND SPECIFICATIONS ARE INTENDED TO BE FOR ASSISTANCE AND GUIDANCE, BUT EXACT LOCATIONS, DISTANCES, LEVELS, QUANTITIES SHALL BE GOVERNED BY ACTUAL CONDITIONS FOUND AT THE JOB SITE AND MUST BE VERIFIED BY THE CONTRACTOR. THE CONTRACTOR SHALL FIELD VERIFY ALL DIMENSIONS AND BECOME FAMILIAR WITH ALL AREAS OF THE EXISTING BUILDING AFFECTED BY THE WORK, PRIOR TO COMMENCING THE WORK.
14. CONTRACTOR SHALL LEGALLY REMOVE AND DISPOSE OF ALL DEBRIS.

LIST OF DRAWINGS

T.1 TITLE SHEET, LIST OF DRAWINGS, & SITE PLAN

ASBESTOS & LEAD ABATEMENT
ABPB.1 ABATEMENT PLAN

LIFE SAFETY PLAN
LS.1 8th FLOOR - LIFE SAFETY PLAN

ARCHITECTURAL
A.1 8th FLOOR - DEMOLITION PLAN
A.2 8th FLOOR - CONSTRUCTION PLAN
A.3 CONSTRUCTION PLAN TOILET ROOMS, ELEVATIONS, DETAILS, DOOR & FRAME ELEVATIONS, DOOR SCHEDULE
A.4 8th FLOOR - REFLECTED CEILING PLAN
A.5 7th FLOOR - CEILING DEMOLITION AND REPLACEMENT FOR REQUIRE PLUMBING WORK

FIRE PROTECTION
FP1.1 FIRE PROTECTION DEMOLITION PLAN - LEVEL 8
FP2.1 FIRE PROTECTION RENOVATION PLAN - LEVEL 8

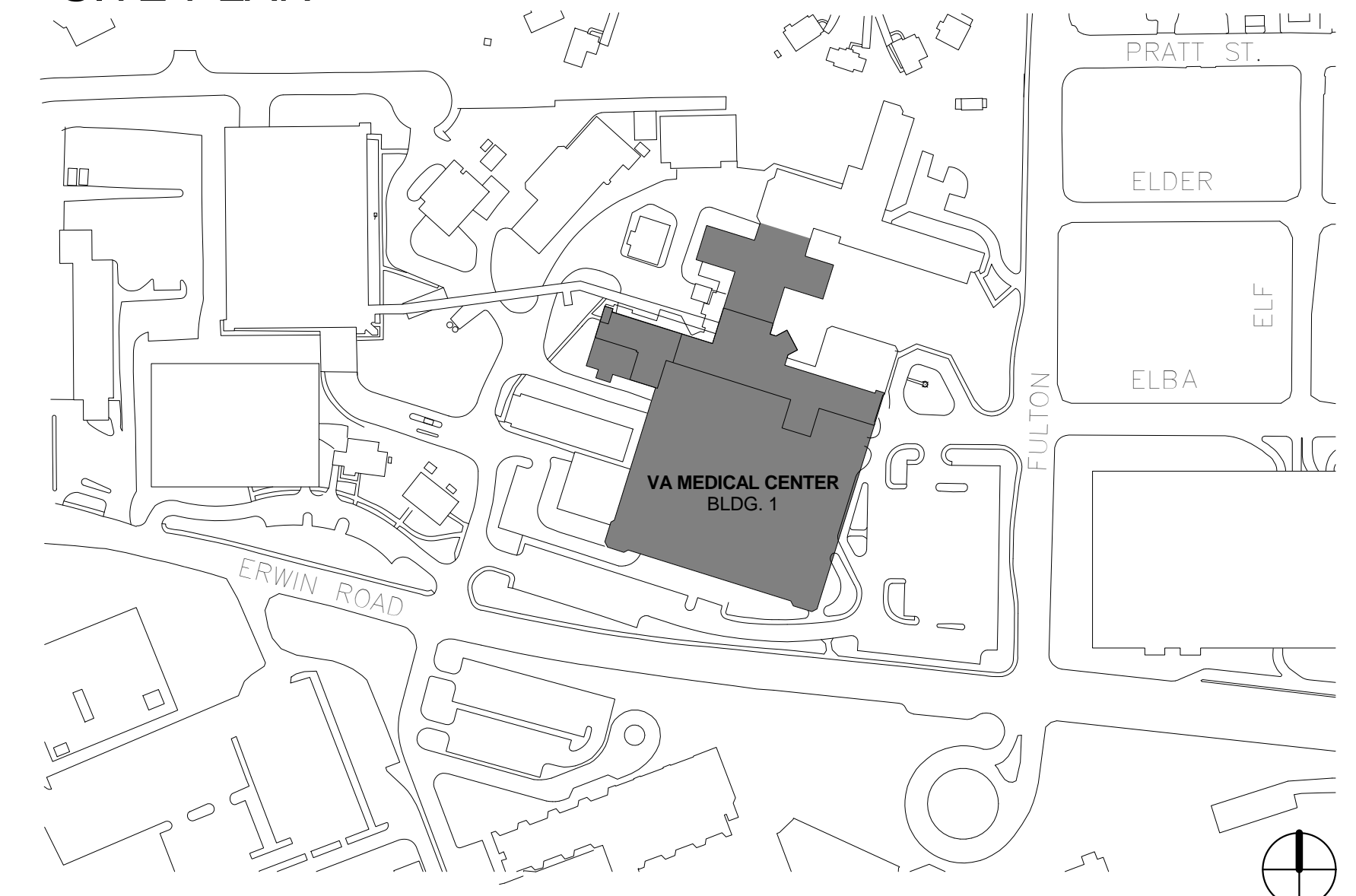
PLUMBING
P1.1 PLUMBING EXISTING PLAN - LEVEL 7
P2.1 PLUMBING DEMOLITION PLAN - LEVEL 8
P3.1 PLUMBING RENOVATION PLAN - LEVEL 8
P4.1 PLUMBING EXISTING PLAN - LEVEL 9
P5.1 RISER VALVE LOCATION PLAN - LEVEL 10
P6.1 PLUMBING RISERS
P7.1 PLUMBING RISERS
P8.1 PLUMBING RISERS
P9.1 PLUMBING RISERS
P10.1 PLUMBING RISERS

LIST OF DRAWINGS

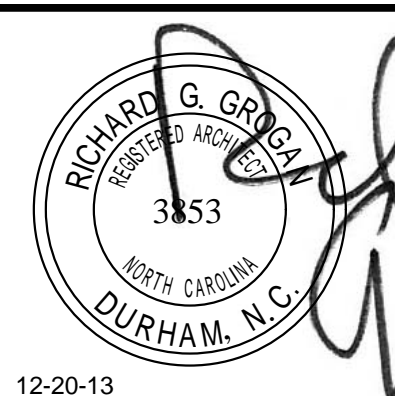
MECHANICAL
M0.1 HVAC LEGENDS, NOTES AND SCHEDULES
M1.1 HVAC DEMOLITION PLAN - LEVEL 8
M2.1 HVAC RENOVATION PLAN - LEVEL 8
M2.2 HVAC PIPING PLAN - LEVEL 8
M3.1 HVAC DETAILS

ELECTRICAL
E0.1 ELECTRICAL COVER SHEET
E1.1 ELECTRICAL DEMOLITION PLAN - LEVEL 8
E2.1 ELECTRICAL RENOVATION PLAN - LEVEL 8
E2.2 ELECTRICAL LIGHTING RENOVATION PLAN - LEVEL 8
E2.3 ELECTRICAL FIRE ALARM RENOVATION PLAN - LEVEL 8
E3.1 ELECTRICAL RISERS
E3.2 ELECTRICAL RISERS
E4.1 ELECTRICAL PANEL SCHEDULES
E5.1 ELECTRICAL DETAILS
E5.2 ELECTRICAL DETAILS

SITE PLAN



CONSTRUCTION DOCUMENTS
DESTROY ALL
PREVIOUS COPIES



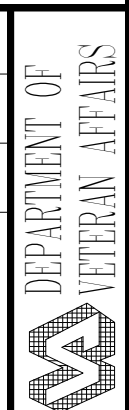
RGG
Architects
RGG Architects, PLLC
1002 Broad Street
Durham, North Carolina
27705
919.286.5700
www.rggarchitects.com

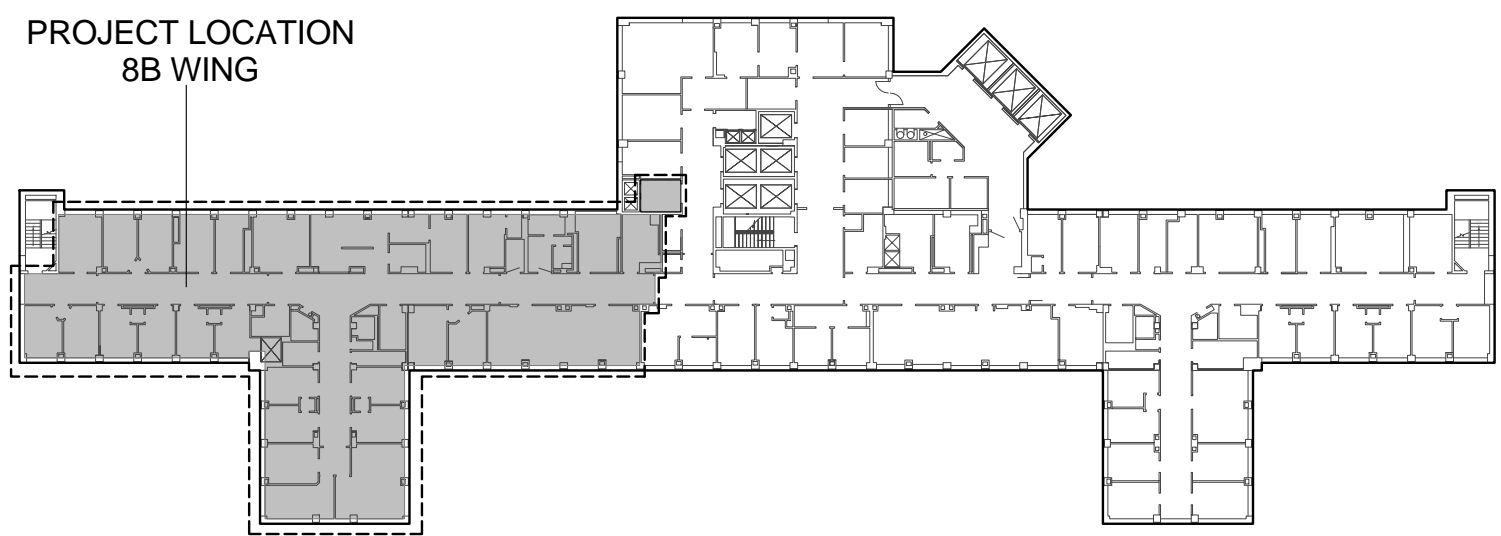
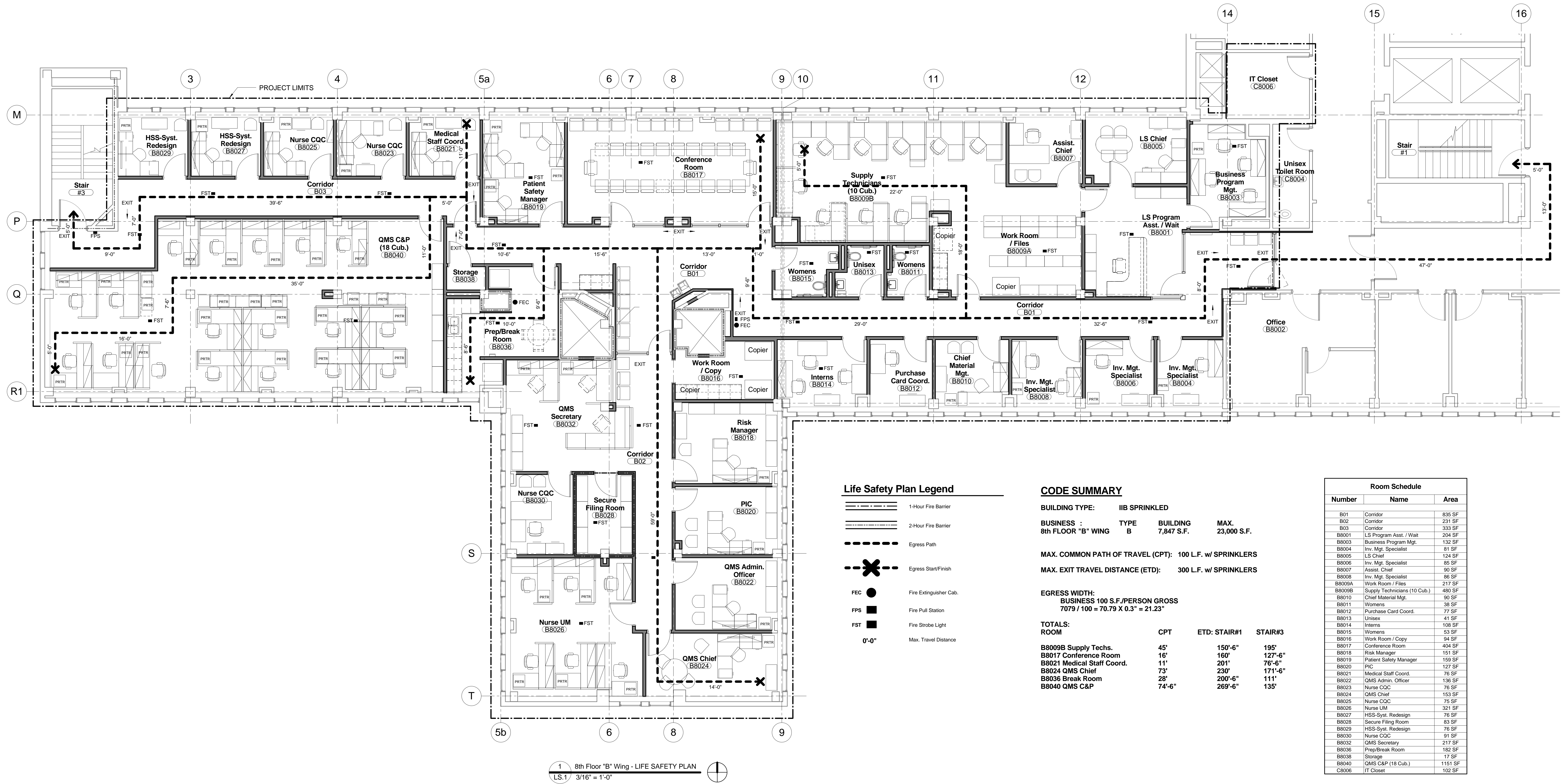
REV.	DATE
RECOMMENDED APPROVAL	
Requestor:	Date Chief of Staff:
Chief of Service:	Date Asst. Mod. Ctr. Dir.:
APPROVED BY:	Date
MEDICAL CENTER DIRECTOR	

Drawing Title: TITLE SHEET, LIST OF DRAWINGS, & SITE PLAN	
Approved: Chief, Engineering Service	
Approved: Infection Control	

Project Title: RENOVATE 8th FLOOR B-WING IN BUILDING 1			
Building No. 1	Designed By: -	Drawn By: MML	Checked By: RGG
Location VA Medical Center Durham, NC			

Date 12/20/2013
Project No. 558-12-115
Project Drawing No. 13-E-0X
DRAWING NO. T.1
Sheet 1 of 8





KEY PLAN - 8TH FLOOR
1" = 50' - 0"

CONSTRUCTION DOCUMENTS
DESTROY ALL
PREVIOUS COPIES



RGG Architects
RGG Architects, PLLC
1002 Broad Street
Durham, North Carolina 27705
919.286.5700
www.rggarchitects.com

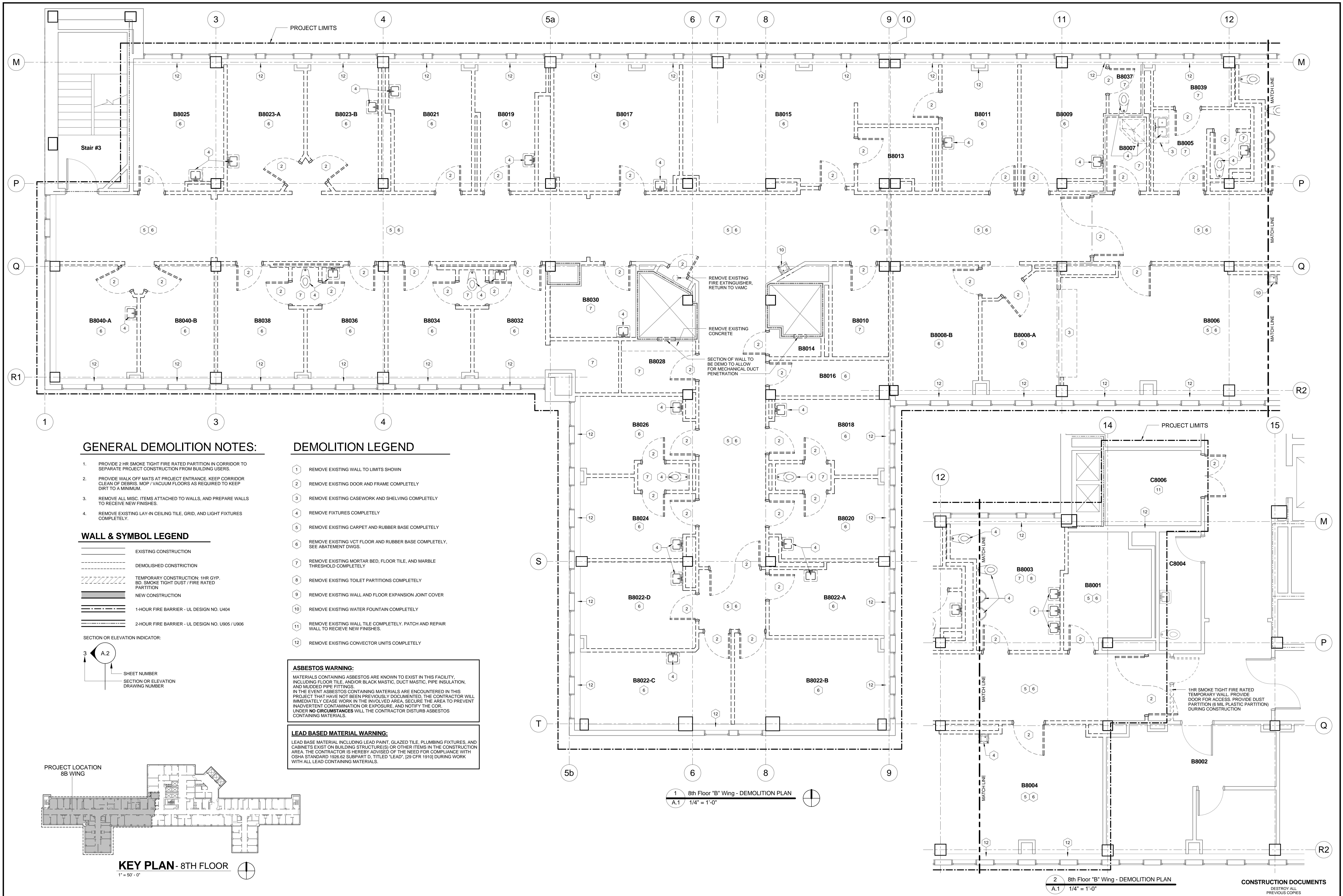
REV.	DATE
RECOMMENDED APPROVAL	
Requestor:	Date Chief of Staff:
Chief of Service:	Date Asst. Med. Ctr. Dir.:
APPROVED BY:	Date
MEDICAL CENTER DIRECTOR	

Drawing Title:	8th FLOOR - LIFE SAFETY PLAN
Approved: Chief, Engineering Service	Date
Approved: Infection Control	Date

Project Title:	RENOVATE 8th FLOOR B-WING IN BUILDING 1
Building No.:	1
Designed By:	-
Drawn By:	MML
Checked By:	RGG
Location:	VA Medical Center Durham, NC

Date:	12/20/2013
Project No.:	558-12-115
Project Drawing No.:	13-E-0X
DRAWING NO.:	LS.1
Sheet:	3 of 8





NOTE: SHIM PAPER TOWEL AND SOAP DISPENSERS AS NECESSARY WHERE TILE AND GYP. BD. MEET. PROVIDE FINISH ON EXPOSED EDGES OF SHIM MATERIAL TO MATCH ACCESSORIES.

WHERE WAINSCOT TILE FINISH PRESENT PROVIDE CONTINUOUS BLOCKING AT EDGE OF MIRROR TO FLUSH WITH TILE (TYPICAL)

Technical drawings illustrating mirror installation details, including dimensions and component callouts (1-7).

Left Drawing (Wall Mirror):

- Dimensions: 4'-2" (height), 3'-0" (height), 3'-2" (width), 3'-6" (width), 1'-6" (height), 3'-4" (height), 4'-0" (height), 2'-10" (height).
- Callouts: 1 (Shim), 2 (Leveling screw), 3 (Mirror), 4 (Shim), 5 (Leveling screw), 6 (Shim), 7 (Leveling screw).

Middle Drawing (Pedestal Mirror):

- Dimensions: 3'-4" (height), 4'-0" (height), 2'-10" (height).
- Callouts: 1 (Shim), 2 (Leveling screw), 3 (Mirror), 4 (Shim), 5 (Leveling screw), 6 (Shim), 7 (Leveling screw).

Right Drawing (Vanity Mirror):

- Dimensions: 2'-6" (width), 1'-6" (height), 4" (height), 3'-0" (height), 1'-7" (height).
- Callouts: 1 (Shim), 2 (Leveling screw), 3 (Mirror), 4 (Shim), 5 (Leveling screw), 6 (Shim), 7 (Leveling screw).

3 ELEVATION - Toilet Room
A.3 $1\frac{1}{2}" = 1'-0"$

4 ELEVATION - Break Room B8036
A.3 1/2" = 1'-0"

5 ELEVATION - Break Room B8036
A.3 1/2" = 1'-0"

2'-0" MODULAR

3'-0" MODULAR

3'-0" MODULAR

3'-0" MODULAR

2'-0" MODULAR

MICROWAVE PROVIDED BY VAMC

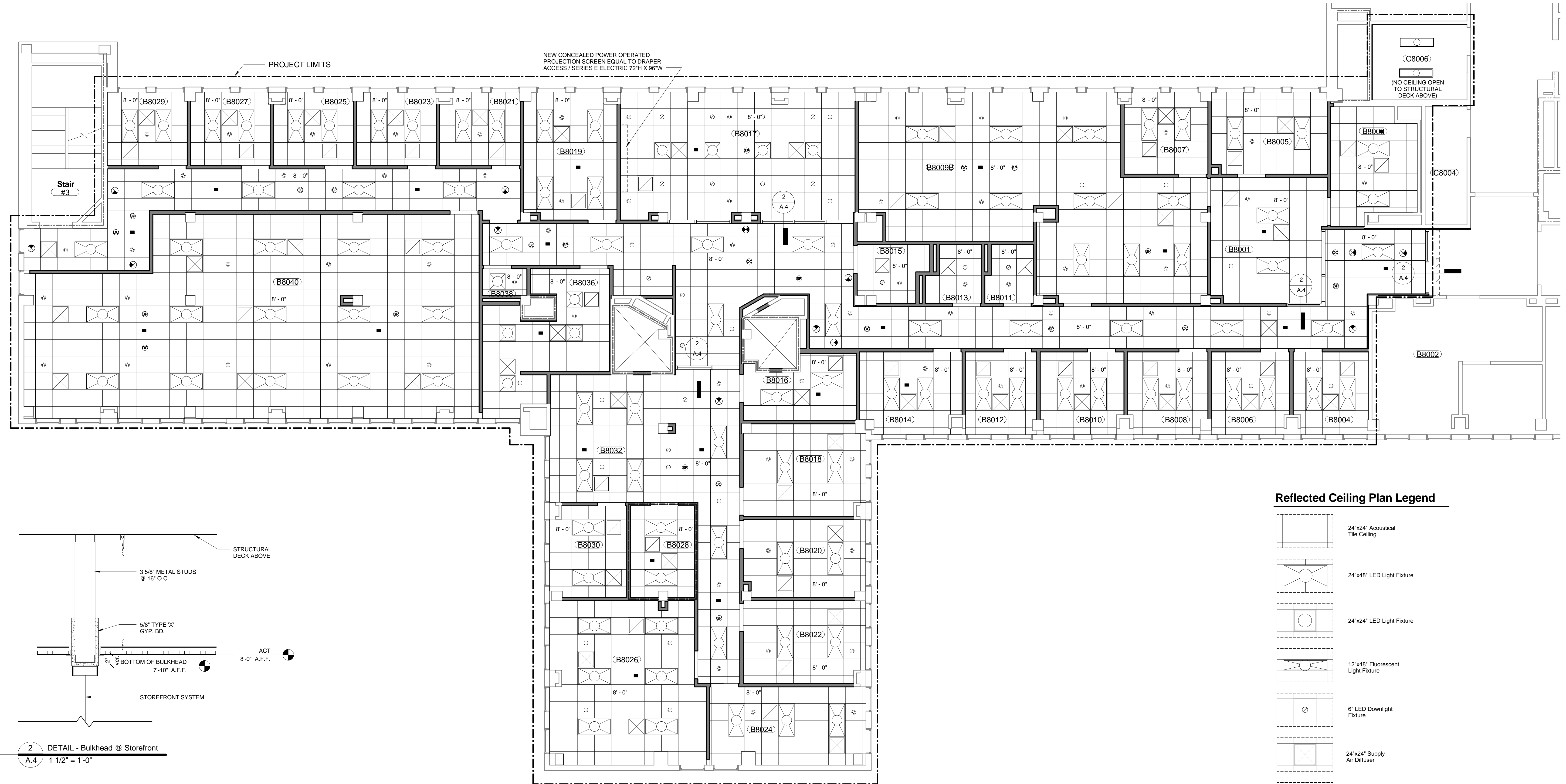
MICROWAVE PROVIDED BY VAMC

KITCHEN

STAIR

RESTROOM

5 ELEVATION - Break Room B8036
A.3 1/2" = 1'-0"



Reflected Ceiling Plan Legend

- 24"x24" Acoustical Tile Ceiling
- 24"x48" LED Light Fixture
- 24"x24" LED Light Fixture
- 12"x48" Fluorescent Light Fixture
- 6" LED Downlight Fixture
- 24"x24" Supply Air Diffuser
- 24"x24" Return Air Grill
- 24"x24" Exhaust Air Grill
- Occupancy Sensor
- Exit Signage
- Sprinkler
- Fire Strobe
- Speaker

1 8th Floor - REFLECTED CEILING PLAN
A.4 3/16" = 1'-0"

NOTES FOR INFILLING PENETRATIONS IN EXISTING CONCRETE FLOOR:

1. WIRE BRUSH CLEAN ALL EXISTING SURFACES.
2. BLOW CLEAN WITH OIL-FREE COMPRESSED AIR THE EDGES OF THE EXISTING SLAB, AND APPLY AN EPOXY BONDING ADHESIVE EQUAL TO CONCRESE 1001 LPL AS MANUFACTURED BY ADHESIVE ENGINEERING, TO THE SURFACE OF THE EXISTING CONCRETE SLAB THAT WILL RECEIVE THE NEW GROUT FILL.

PLACE AND CONSOLIDATE A NON-SHRINK, NON-METALLIC HIGH STRENGTH GROUT IN NEW OPENING

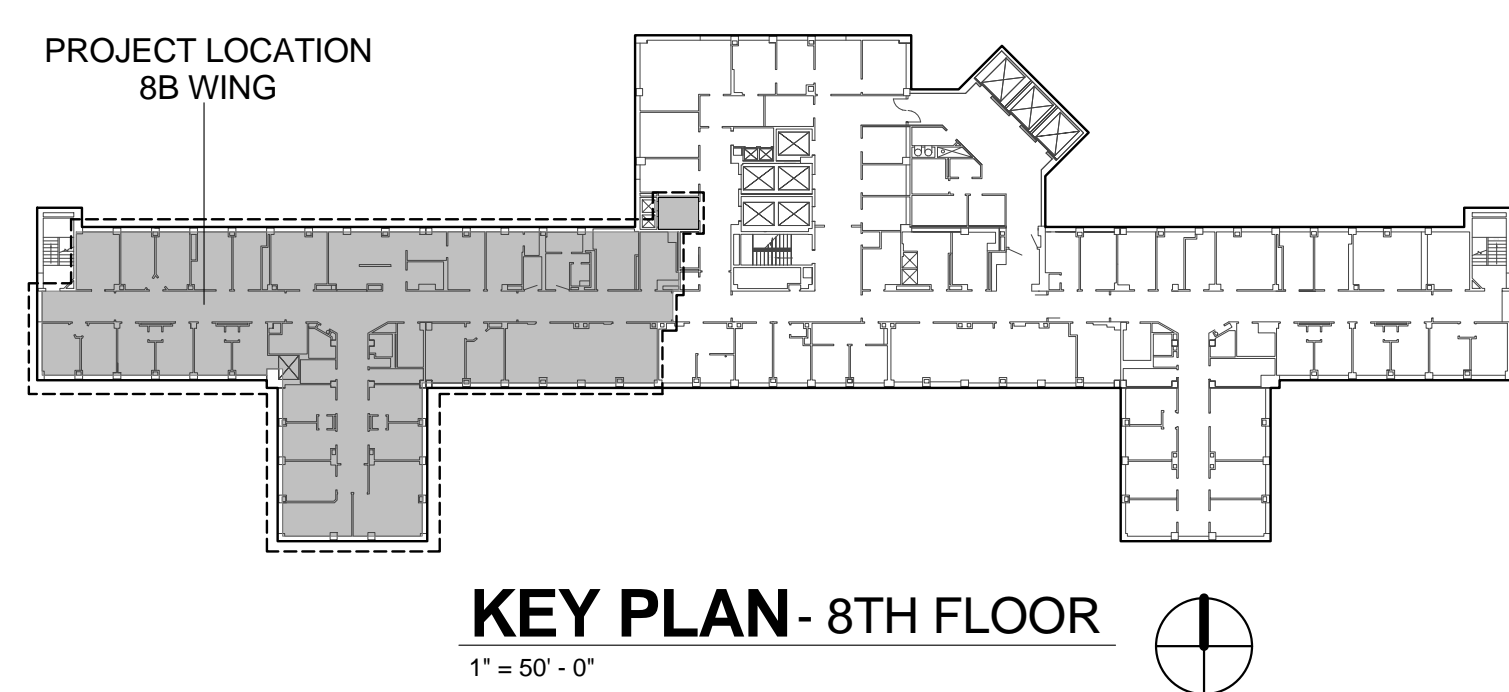
CHIP SURFACE ON SLOPE AS INDICATED

NOTIFY ARCHITECT IF DIM. EXCEEDS 18"

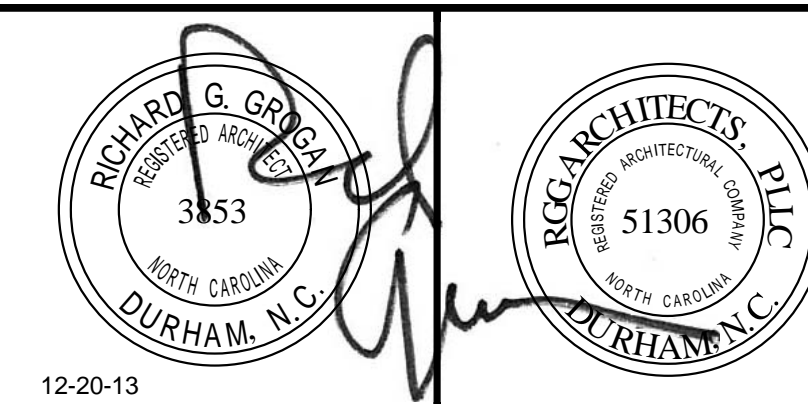
FIT FORMS TIGHT AGAINST THE SURFACE OF THE EXISTING CONCRETE SLAB TO PREVENT GROUT LEAKAGE

STEEL DOWELS EMBEDDED IN GROUT IN EXISTING SLAB AND EXTENDING 4" MIN. INTO POUR AREA, 6" O.C. MAX.

3 DETAIL - Concrete Infill
A.4 1" = 1'-0"



CONSTRUCTION DOCUMENTS
DESTROY ALL PREVIOUS COPIES



RGG Architects
RGG Architects, PLLC
1002 Broad Street
Durham, North Carolina 27705
919.286.5700
www.rggarchitects.com

REV.	DATE	RECOMMENDED APPROVAL
Requestor:	Date	Chief of Staff:
Chief of Service:	Date	Asst. Mod. Ctr. Dir.:
APPROVED BY:	Date	APPROVED BY:
MEDICAL CENTER DIRECTOR		

Drawing Title:	8th FLOOR - REFLECTED CEILING PLAN
Approved: Chief, Engineering Service	
Approved: Infection Control	

Project Title:	RENOVATE 8th FLOOR B-WING IN BUILDING 1
Building No.	1
Designed By:	-
Drawn By:	MML
Checked By:	RGG
Location:	VA Medical Center Durham, NC

Date:	12/20/2013
Project No.	558-12-115
Project Drawing No.	13-E-0X
DRAWING NO.	A.4
Sheet	of 8



