

Item	Date	Description
1	01/31/14	Amendment A00003



## GENERAL NOTES

1. ALL PENETRATIONS THROUGH FIRE RATED WALLS SHALL COMPLY WITH THE BUILDING CODE AND NFPA.
2. PENETRATIONS SHALL BE FIRE STOPPED WITH FIRE BARRIER PRODUCTS AS REQUIRED TO MAINTAIN FIRE RATINGS. INSTALL IN ACCORDANCE WITH UL ASSEMBLIES AND MANUFACTURERS' INSTRUCTIONS FOR THEIR USE.
3. PROVIDE SHOP DRAWINGS FOR APPROVAL SHOWING PENETRATIONS, MATERIALS USED FOR FIRE RATING AND UL ASSEMBLY NO.
4. PROVIDE BLOCKING AT PARTITIONS AS REQUIRED FOR MOUNTING OF FURNISHED AND NON-FURNISHED WALL-MOUNTED ITEMS.
5. PROVIDE SUPPLEMENTAL FRAMING, INSULATION, AND FINISH MATERIALS AS REQUIRED TO MAINTAIN PARTITION FIRE-RESISTANCE RATING AT RECESSED ITEMS.
6. REFER TO SHEET A601 FOR DOOR SCHEDULE AND DOOR TYPES.
7. REPAIR/REPLACE SPRAY APPLIED FIREPROOFING WHERE WORK REVEALS EXPOSED STRUCTURAL STEEL MEMBERS.
8. ALL WOOD TO BE FIRE RETARDANT TREATED. SEE SPECIFICATIONS FOR OTHER REQUIREMENTS.
9. ALL WOOD USED IN EXTERIOR WALLS, ROOFS, OR EXTERIOR TO THE BUILDING SHALL BE FIRE RETARDANT TREATED AND PRESERVATIVE TREATED. SEE SPECIFICATIONS FOR OTHER REQUIREMENTS.
10. CONTRACTOR TO PROVIDE SIGNAGE FOR ALL ROOMS EXCEPT CORRIDORS. REFER TO SPECIFICATION SECTION 10.14.10. REFER TO DRAWING 1801 FOR SIGNAGE STYLE AND FINISHES. FINAL TEXT AND LOCATIONS FOR SIGNAGE TO BE COORDINATED W/ OWNER. CONTRACTOR ALSO TO PROVIDE ALL CODE REQUIRED SIGNAGE FOR TOILET ROOMS, MECHANICAL ROOMS, FIRE EXTINGUISHER CABINETS, ETC.
11. AREAS IN GRAY ARE NOT IN CONTRACT.
12. ALL GYP. BD. IN TOILET AND BATHROOMS SHALL BE MOISTURE RESISTANT.

## REFERENCE LEGEND

Room name	ROOM TAG
101	
101A	DOOR TAG
W1	WINDOW TAG
1	REVISION TAG
1	KEYNOTE TAG
G3.0	WALL TAG
FE	FIRE EXTINGUISHER
FEC	FIRE EXTINGUISHER CABINET
PP	PUSH PLATE
CR	CARD READER
1 A101	SECTION TAG
1 A101	DETAIL TAG
A431	ELEVATION TAG
SEC-1	SECURITY CAMERA (NIC)
SEC-2	SECURITY PAN. TILT, ZOOM CAMERA (NIC)

**NOTE: CONTRACTOR TO FIELD  
VERIFY ALL DIMENSIONS, MATERIALS,  
AND OTHER EXISTING CONDITIONS.**

## DRAWING NOTES

1. FIRE PLACE, ALT.
2. ADD CARD READER CONTROLS TO EXISTING AUTOMATIC DOOR SYSTEM.
3. EXISTING WALLS IN THIS AREA MAY NOT CURRENTLY GO TO DECK. ADD FRAMING AND GYPSUM BOARD AS REQUIRED TO TAKE TO DECK.
4. REPLACE EXISTING EXPANSION JOINT.
5. MAINTAIN FIRE RATING OF EXISTING BRACING. SEPARATE NEW DUCTWORK, PIPING AND CONDUIT PENETRATIONS FROM BRACING WITH SHAFTHALL OR OTHER APPROVED FIRE RATING METHOD.
6. CONTINUE 1-HOUR FIRE BARRIER AROUND EXISTING DUCTWORK ABOVE TO SEAL TO STRUCTURE.
7. 5/8" TER LOOKERS.
8. SEE SHEET A321 FOR ELEVATOR FINISHES, REFLECTED CEILING PLAN AND WALL FINISHES. ALT.
9. INTERIOR PARTITIONS AROUND MECHANICAL ROOM SHALL RECEIVE 2 LAYERS OF 5/8" GYPSUM BOARD ON EACH SIDE OF 3/8" STUDS. STUD CAVITY TO HAVE 3" THICK SOUND ATTENUATION INSULATION. PARTITIONS SHALL SEAL TO STRUCTURE.
10. SEE SHEET A321 FOR ELEVATOR FINISHES, REFLECTED CEILING PLAN AND WALL FINISHES.

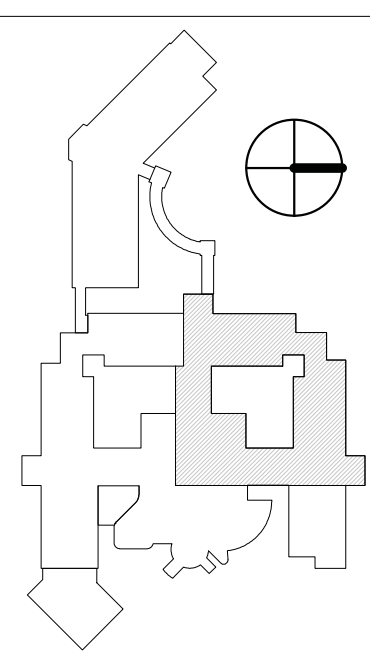
Type	Face	Structure	Fire Rating	UL #	Comments
F1.0	5/8" Gyp. Bd., 1 layer 1 side	7/8" Metal Channels			
F2.0	5/8" Gyp. Bd., 1 layer 1 side	1 5/8" Metal Channels			
F3.0	5/8" Gyp. Bd., 1 layer 1 side	2 1/2" Metal Studs			
F4.0	5/8" Gyp. Bd., 1 layer 1 side	3 5/8" Metal Studs			
F6.0	5/8" Gyp. Bd., 1 layer 1 side	6" Metal Studs			
G4.0	5/8" Gyp. Bd., 1 layer ea. side	3 5/8" Metal Studs	1-HR	U419	
G4.1	5/8" Fire-Rated Gyp. Bd., 1 layer ea. side	3 5/8" Metal Studs			
G6.0	5/8" Gyp. Bd., 1 layer ea. side	6" Metal Studs			
G6.1	5/8" Fire-Rated Gyp. Bd., 1 layer ea. side	6" Metal Studs	1-HR	U419	
S3.1	5/8" Gyp. Bd., 1 layer 1 side, 1" liner panel, shaft side	2 1/2" C-H Stud	1-HR	U415	
S4.1	5/8" Fire-Rated Gyp. Bd., 1 layer 1 side, 1" liner panel, shaft side	4" C-H Studs	1-HR	U415	

1. ALL INTERIOR PARTITIONS TO BE TYPE G4.0 UNLESS NOTED OTHERWISE.
2. STUDS AND FURRING STRIPS AT 16" O.C.
3. DO NOT FASTEN TOP RUNNER TO STUDS. CRIMP RUNNER ON BOTH SIDES TO STABILIZE STUDS.
4. ALL INTERIOR PARTITIONS TO SEAL TO STRUCTURE ABOVE.
5. ALL INTERIOR PARTITIONS TO HAVE SOUND ATTENUATION INSULATION FOR FULL HEIGHT OF WALL.

## Life Safety Legend

Non-Rated Smoke Tight	---
1 Hour Fire Rated Barrier	---
1 Hour Smoke Barrier	---
2 Hour Fire Rated Barrier	---
2 Hour Smoke Barrier	---
3 Hour Fire Rated Barrier	---
3 Hour Smoke Barrier	---
Travel Distance	25'-0"
Exit Width	4'
Fire Extinguisher Cabinet	FEC

## KEY PLAN



**1 Enlarged Floor Plan - First Floor Area C**  
1/8" = 1'-0"