

EV Charging Stations

Project No. 626A4-13-504

Tennessee Valley Health Care System

Murfreesboro

June 18, 2013



GENERAL PROJECT ADMINISTRATIVE NOTES

1. THE INFORMATION SHOWN REGARDING EXISTING CONDITIONS ON ALL DRAWINGS AND AS NOTED ELSEWHERE WERE BASED ON FIELD OBSERVATIONS AND EXISTING DRAWINGS AS OF MAY 2013. IT IS THE RESPONSIBILITY OF THE CONTRACTOR TO THOROUGHLY FIELD VERIFY EXISTING CONDITIONS (EXPOSED AND CONCEALED) OF ANY AND ALL DIMENSIONS AND CONDITIONS PRIOR TO SUBMITTING A BID. ROOM NUMBERS MAY BE DIFFERANT THAN SHOWN. DRAWINGS ARE NOT TO BE SCALED FOR LOCATIONS OR NEW WORK ITEMS. CONTRACTOR SHALL TAKE ACTUAL MEASUREMENTS IN THE FIELD FOR BIDDING PURPOSES, MATERIAL TAKEOFFS, ETC. SITE INVESTIGATIONS CAN BE SCHEDULED THROUGH THE CONTRACTING OFFICER AND THE COTR.
2. CONTRACTOR MUST HAVE PRIOR APPROVAL OF COTR FOR ALL MATERIAL STORAGE, EQUIPMENT SETUP, AND STAGING FOR ALL DEMOLITION AND OR NEW WORK.
3. NORMAL MEDICAL CENTER WORK HOURS ARE (7:00 AM TO 4:30 P.M. M-F) AND WEEKENDS (FRIDAY 4:00 P.M. TO SUNDAY). CONTRACTORS WORK IS TO BE PERFORMED DURING DUTY HOURS AS DIRECTED BY COTR.
4. CONTRACTOR SHALL MAKE EVERY EFFORT TO MINIMIZE DOWNTIME ASSOCIATED WITH SCHEDULED SHUTDOWNS. ALL UTILITY SHUT DOWNS MUST BE COORDINATED WITH THE COTR PRIOR TO AND IN ACCORDANCE WITH THE SPECIFICATIONS.
5. CONTRACTORS ARE TO KEEP ALL ROADWAYS AND ENTRANCES TO THE MEDICAL CENTER OPEN AND OR ACCESSIBLE AT ALL TIMES, UNLESS APPROVED BY THE COTR.
6. CONTRACT DRAWINGS AND SPECIFICATIONS REPRESENT A FINISHED STRUCTURE. THEY DO NOT INDICATE METHODS OF CONSTRUCTION. THE CONTRACTORS SHALL PROVIDE ALL MEASURES NECESSARY TO PROTECT THE STRUCTURE AND PERSONNEL DURING CONSTRUCTION. CONTRACTORS ARE TO KEEP THE MEDICAL CENTER CLEAN AND FREE FROM DEBRIS AT ALL TIMES.
7. THESE DRAWINGS ARE DIAGRAMMATICAL AND SHOW ONLY THE INTENT OF WORK TO BE COMPLETED. THE CONTRACTOR IS RESPONSIBLE FOR PROVIDING ALL LABOR AND OR MATERIALS FOR A COMPLETE WORKING SYSTEM AS REQUIRED. ANY ERRORS OR OMISSIONS SHOULD BE REPORTED TO THE COTR FOR CLARIFICATION PRIOR TO BID.
8. THE GOVERNMENT HAS SALVAGE RIGHTS TO ANY AND OR ALL EQUIPMENT OR MATERIAL BEING REMOVED UNDER THIS CONTRACT AS DIRECTED BY THE COTR.

Index of Drawings

GENERAL

1. Cover Sheet
2. Site Plan
3. Buildings 12/14
4. Removable Post Barricade Detail
5. Post Barricade Strap Detail

Tennessee Valley Health Care System

EV Charging Station
Cover Sheet

6/18/2013

626A4-13-504

ACV

MA

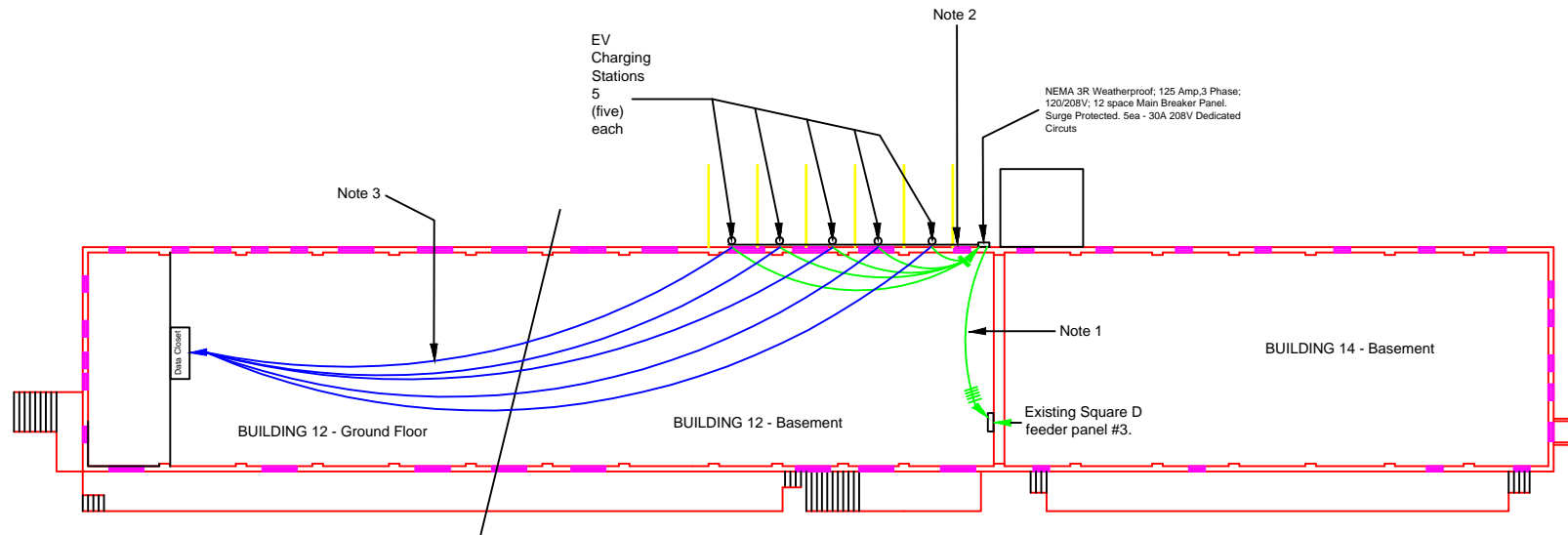
HJ

1

5

Department of
Veterans Affairs





BUILDINGS 12 & 14 - Basement

SCALE: NTS



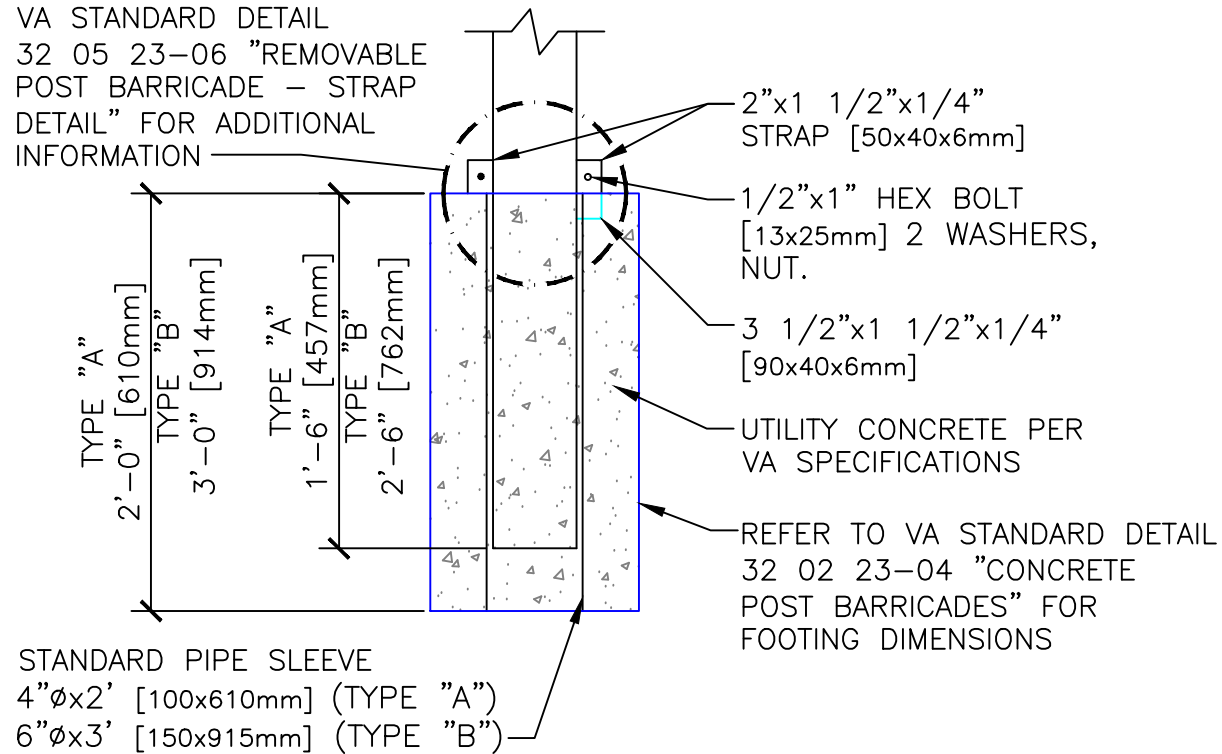
Note 1: Use #2 THHN Conductor, 1.5 inch EMT Conduit

Note 2: Use #10 THHN Solid Conductor; 0.75 inch Rigid Conduit, Max. 2 circuits per conduit

Note 3: Use Cat6 Communication Wire; 0.75" Conduit; Use EMS indoors, Rigid outdoors, Core Drill floor(4inch) in Data Closet

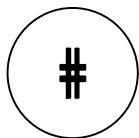
VA STANDARD DETAIL

32 05 23-06 "REMOVABLE
POST BARRICADE - STRAP
DETAIL" FOR ADDITIONAL
INFORMATION



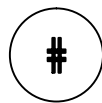
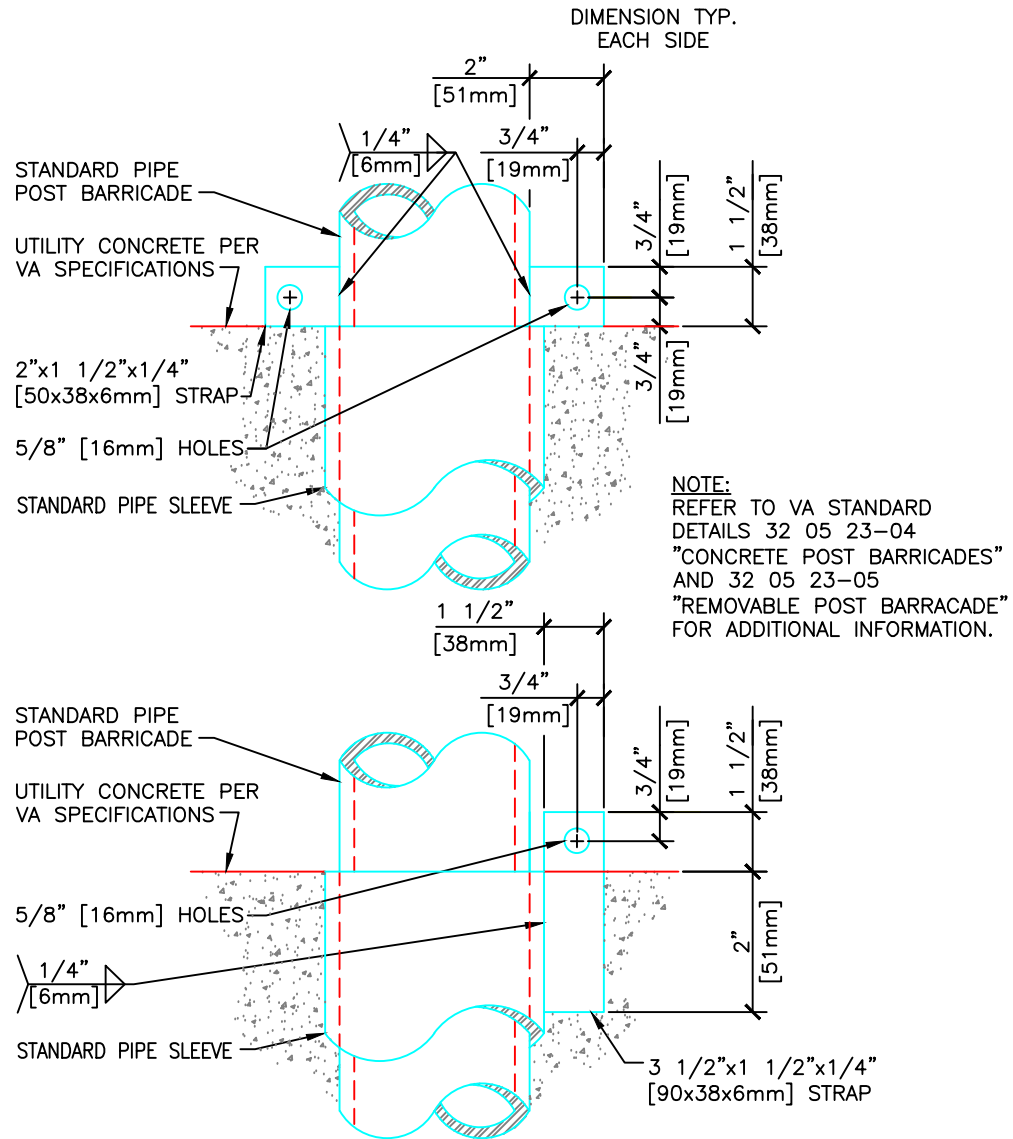
NOTES:

1. REMOVABLE POST BARRICADE SHALL NOT BE CONCRETE FILLED.
2. HAND TIGHTEN BOLT & NUT USING WASHERS EACH SIDE OF STRAPS. CUT BOLT APPROX. 1/8" [6mm] FROM FACE OF NUT & PEEN EXPOSED END OF BOLT.
3. REFER TO VA STANDAD DETAIL 32 02 23-04 "CONCRETE POST BARRICADES" FOR POST DETAILS.



REMOVABLE POST BARRICADE

NTS



REMOVABLE POST BARRICADE - STRAP DETAIL

NTS