

Hand-drawn floor plan of a building, likely a school or institutional structure, showing various rooms and corridors. The plan includes dimensions for walls and rooms, and labels for different areas.

Dimensions (Top): 8'-2 1/2", 3'-2 1/2", 2'-1 1/2", 3'-5", 13'-0 1/2", 8'-3 1/2", 8'-0", 4'-5 1/2", 9'-1"

Dimensions (Right): 9'-1/2", 12'-1 1/2", 8'-7", 7'-0 1/2", 7'-5", 7'-3 1/2", 6'-4 1/2", 11'-1 1/2"

Dimensions (Bottom): 6'-3 1/2", 6'-1 1/2", 3'-10 1/2", 4'-8", 8'-0 1/2", 8'-7"

Dimensions (Left): 8'-5", 7'-11 1/2"

Labels and Features:

- P1, P2, P3:** Labels for various rooms or sections.
- Staircases:** Indicated by dashed lines and arrows.
- Corridors:** Labeled with P1, P2, P3.
- Handwritten Note:** "MURRAY TO BE P" (partially visible on the right side).

WATKINS

P-1
Catching
Bait

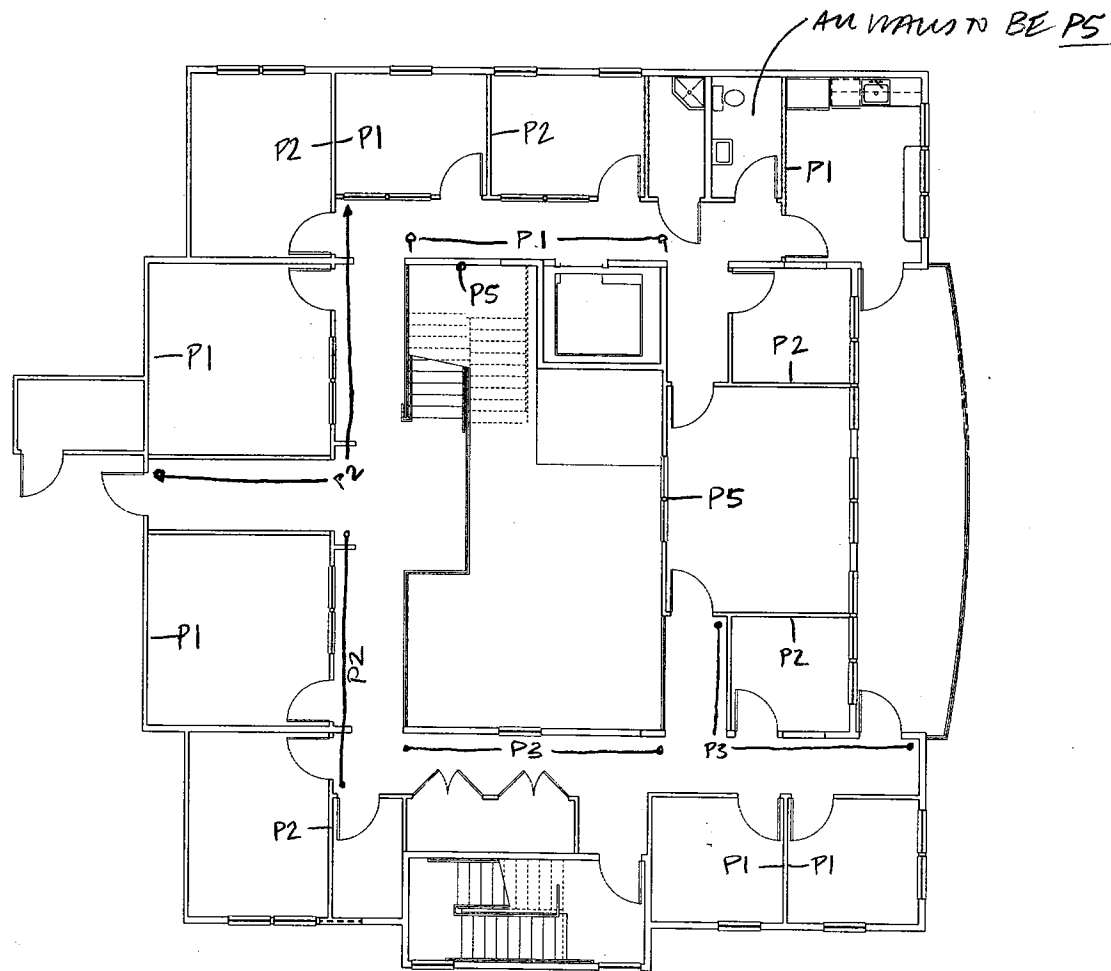
P.2 vacuum
R24

P.3 TEMPERED
STEEL.

p.4 BAYPOOD

P.S. OSWEGO
TH

1. THE PAINT TO
BE EMULSIFIED.
FINISH UNLESS
OTHERWISE
NOTED.



SECOND FLOOR PLAN

A New Facility For:
Parker Development
 1114 Georgiana St., Port Angeles, Washington

DATE: 04-10-13
 REVISED:
 COMM. NO.

316 South Peabody Street
 Port Angeles, Wa., 98282
 (206) 462-0110

LINDBERG
 ARCHITECTS

CHECK
 PRICEVA
 A2.1