

THE FOLLOWING REPRESENTS THE ORDER AND PHASING REQUIRED FOR THIS PROJECT, REPLACING 7-AC107 AND 7-AC108 WHILE STILL PROVIDING AIR CONDITIONED SUPPLY AIR INTO THE HOSPITAL. ANY DOWNTIME OF THE HVAC SYSTEM SHALL BE COORDINATED WITH THE COR AT LEAST A MINIMUM OF 10 DAYS PRIOR TO WORK. THE COR IS ENCOURAGED TO SUBMIT MODIFICATIONS AND IMPROVEMENTS TO THE FOLLOWING PHASING FOR REVIEW AND APPROVAL, SO LONG AS THERE IS NO ADDITIONAL COST TO THE CONTRACT.

PRIOR TO CONSTRUCTION, DOCUMENT EXISTING CONDITIONS WITH PHOTOGRAPHS. UPON COMPLETION OF THE PROJECT, ALL CONSTRUCTION MATERIALS SHALL BE REMOVED FROM THE SITE. ALL TEMPORARY WORK INCLUDING BUT NOT LIMITED TO AIR HANDLING UNITS, DUCTWORK, STRUCTURE, INSULATION, PANEL BOXES, CABLING, FENCING, SIGNAGE, ETC., SHALL BE REMOVED FROM THE SITE. ALL EXISTING AREAS SHALL BE RESTORED TO EXISTING CONDITIONS.

PHASE 1 - 7-AC107 REPLACEMENT

DURATION: 60 CONSECUTIVE DAYS

#### A. INSTALLATION OF TEMPORARY EQUIPMENT:

- 1) CONTRACTOR SHALL INSTALL ALL TEMPORARY DUCTWORK, SUPPORTS, PIPING, TEMPORARY CONTROL WIRING, STEAM TO STEAM HUMIDIFIER MANIFOLD, AND ELECTRIC DUCT MOUNTED HEATING COILS REQUIRED BY 7-AHU107T.
- 2) INSTALL STEAM TO STEAM GENERATOR, 7-STS107 IN EXISTING MECHANICAL ROOM, 2A-119. CONNECT TO TEMPORARY LOCATION OF STEAM TO STEAM HUMIDIFIER MANIFOLD IN DUCTWORK TO 7-AHU107T.
- 3) INSTALL TEMPORARY AIR HANDLING UNIT 7-AHU107T. MAKE ELECTRICAL, PIPING, AND DUCTWORK CONNECTION TO 7-AHU107T.

B. SWITCHOVER TO 7-AHU107T OPERATION.

- 1) SCHEDULE SHUTDOWN OF EXISTING 7-AC107 WITH COR.
- 2) DE-ENERGIZE EXISTING 7-AC107 AND 7-RF105.
- 3) REMOVE EXISTING 7-SA105 AND SET ASIDE.
- 4) CONNECT TEMPORARY SUPPLY DUCT TO EXISTING DUCT.
- 5) INSTALL TEMPORARY TRANSFER DUCTWORK FOR RETURN/RELIEF DUCTWORK.
- 6) INSTALL TEMPORARY DISTRIBUTION PANEL DP-AHU AND FEEDER.
- 7) CONNECT TEMPORARY POWER CONNECTIONS TO UNIT 7-AHU107T, DUCT HEATER 7-DH107T AND PUMP 7-P107T.
- 8) ENERGIZE 7-RF105.
- 9) ENERGIZE 7-AHU107T AND BALANCE TO SCHEDULED AIRFLOW.

C. EXISTING 7-AC107 DEMOLITION:

- 1) VERIFY WITH THE COR WHEN DEMOLITION IS ACCEPTABLE TO START.
- 2) DEMO THE REMAINING PORTIONS OF EXISTING 7-AHU107 DUCTWORK AND PIPING AS REQUIRED FOR INSTALLATION OF NEW 7-AHU107.
- 3) DEMOLISH PORTION OF EXISTING EXTERIOR WALL FOR REMOVAL OF EXISTING AIR HANDLER AND TO BRING IN NEW AIR HANDLER.
- 4) VERIFY WITH THE COR IF ANY OF THE DEMO IS TO REMAIN WITH THE VA. ALL DEMO NOT TO REMAIN WITH VA SHALL BE REMOVED FROM SITE.

#### D. NEW 7-AHU107 CONSTRUCTION

- 1) CONSTRUCT HOUSEKEEPING PAD ADDITION AS REQUIRED.
- 2) INSTALL NEW 7-AHU107, DUCTWORK, PIPING AND CONTROLS FOR A COMPLETE OPERATIONAL INSTALLATION.
- 3) SCHEDULE SHUTDOWN OF 7-AHU107 FOR CONNECTION OF SUPPLY AIR TO NEW 7-AHU107 WITH COR.
- 4) REMOVE EXISTING 7-RF105.
- 5) RECONNECT DUCTWORK AND 7-SA105 TO NEW 7-AHU107.
- 6) RELOCATE STEAM HUMIDIFIER MANIFOLD TO FINAL LOCATION.
- 7) ENERGIZE 7-AHU107 AND BALANCE TO SCHEDULED AIRFLOW.
- 8) REMOVE TEMPORARY DUCT AS INDICATED ON PLANS AND SET ASIDE FOR 7-AHU108 REPLACEMENT.
- 9) BUILD NEW PORTION OF EXTERIOR WALL TO MATCH EXISTING CONSTRUCTION, INSTALL NEW LOUVER AND PAINT EXTERIOR TO MATCH EXISTING.

PHASE 2 - 7-AC108 REPLACEMENT

DURATION: 60 CONSECUTIVE DAYS

#### A. INSTALLATION OF TEMPORARY EQUIPMENT:

- 1) CONTRACTOR SHALL RELOCATE EXISTING SUPPORTS AND INSTALL ALL TEMPORARY DUCTWORK, PIPING, STEAM TO STEAM HUMIDIFIER MANIFOLD, AND ELECTRIC DUCT MOUNTED HEATING COILS REQUIRED.
- 2) INSTALL STEAM TO STEAM GENERATOR, 7-STS108 IN EXISTING MECHANICAL ROOM, 2A-119. CONNECT TO TEMPORARY LOCATION OF STEAM HUMIDIFIER MANIFOLD IN DUCTWORK TO 7-AHU107T.

B. SWITCHOVER TO 7-AHU107I OPERATION.

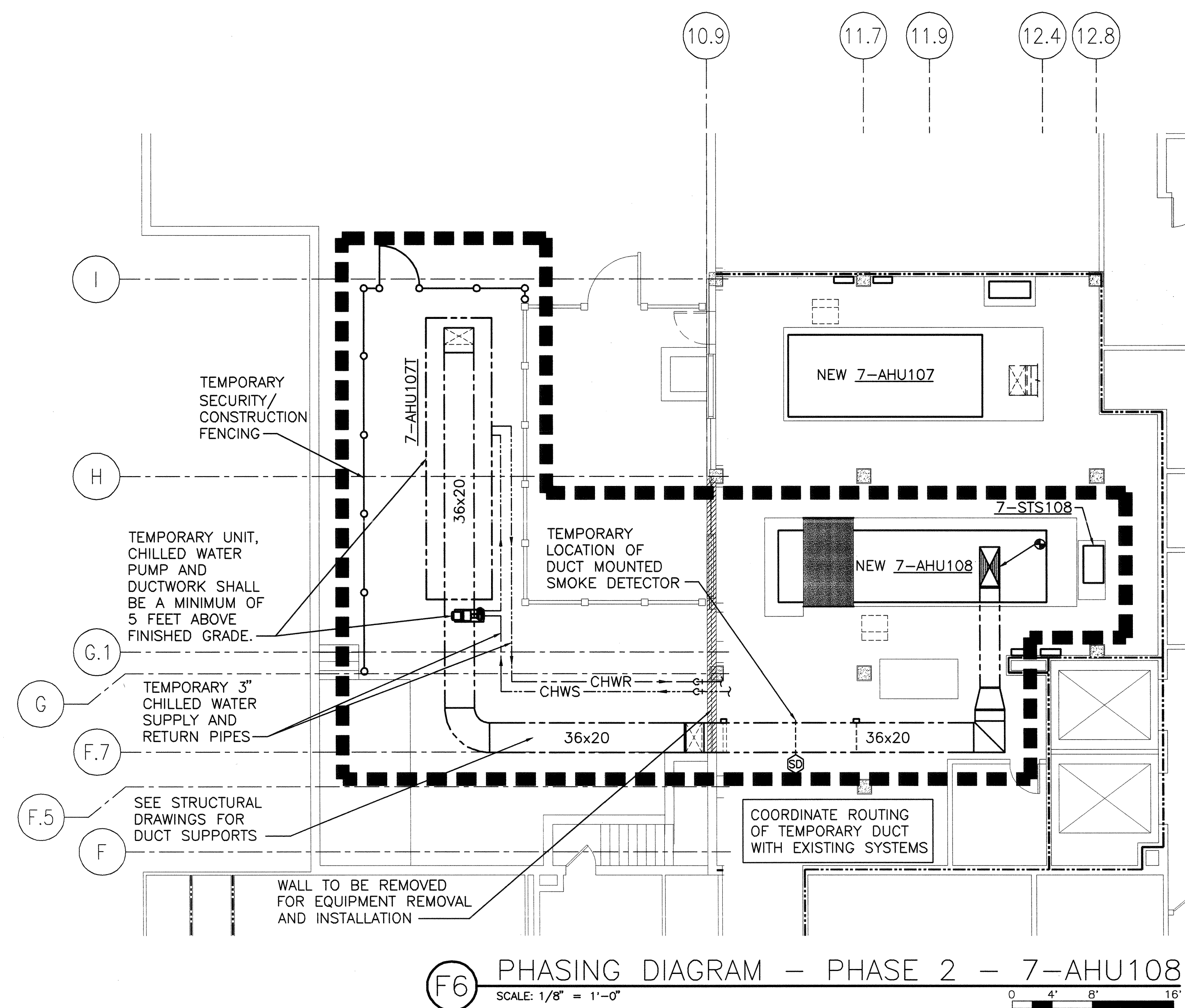
- 1) SCHEDULE SHUTDOWN OF EXISTING 7-AC108 WITH COR.
- 2) DE-ENERGIZE EXISTING 7-AC108 AND 7-EF108.
- 3) CONNECT TEMPORARY SUPPLY DUCT TO EXISTING DUCT.
- 4) INSTALL TEMPORARY TRANSFER DUCTWORK FOR EXHAUST DUCTWORK.
- 5) ENERGIZE 7-EF108.
- 6) ENERGIZE 7-AHU107T AND BALANCE TO SCHEDULED AIRFLOW.

C. EXISTING 7-AC108 DEMOLITION:

- 1) VERIFY WITH THE COR WHEN DEMOLITION IS ACCEPTABLE TO START.
- 2) DEMO THE REMAINING PORTIONS OF EXISTING ~~7-AC108~~ DUCTWORK AND PIPING AS REQUIRED FOR INSTALLATION OF NEW ~~7-AHU108~~.
- 3) DEMOLISH PORTION OF EXISTING EXTERIOR WALL FOR REMOVAL OF EXISTING AIR HANDLER AND TO BRING IN NEW AIR HANDLER.
- 4) VERIFY WITH THE COR IF ANY OF THE DEMO IS TO REMAIN WITH THE VA. ALL DEMO NOT TO REMAIN WITH VA SHALL BE REMOVED FROM SITE.

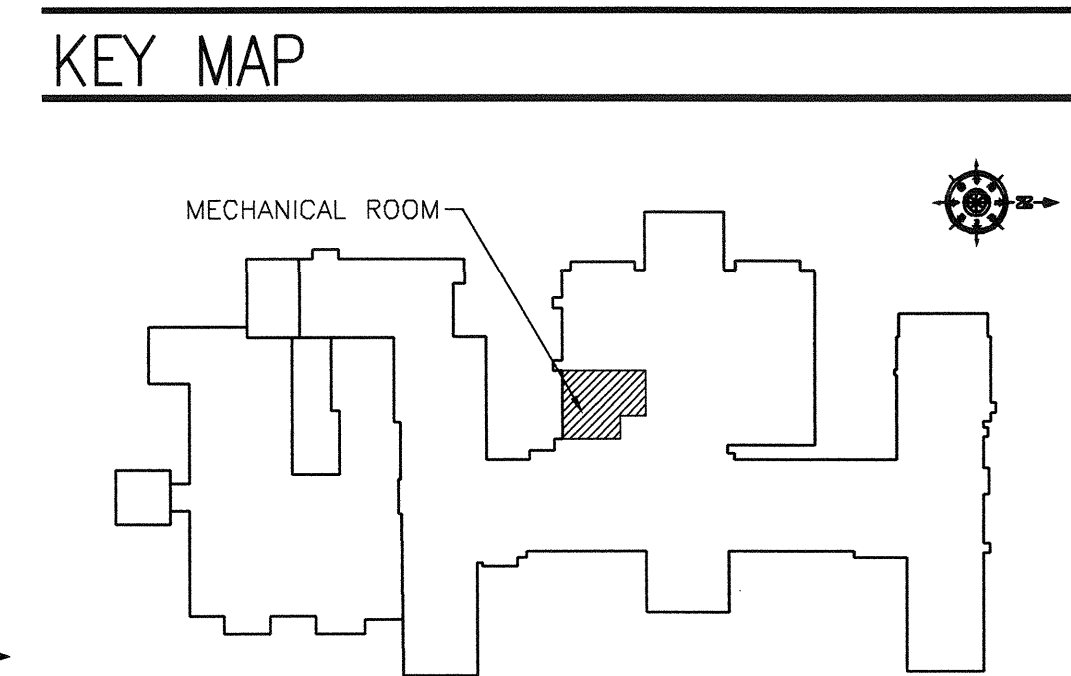
D. NEW 7-AHU108 CONSTRUCTION

- 1) CONSTRUCT NEW HOUSEKEEPING PAD ADDITION AS REQUIRED.
- 2) INSTALL NEW 7-AHU108, DUCTWORK, PIPING AND CONTROLS FOR A COMPLETE OPERATIONAL INSTALLATION.
- 3) SCHEDULE SHUTDOWN WITH THE COR FOR CONNECTION OF SUPPLY AIR AND EXHAUST AIR TO NEW 7-AHU108.
- 4) RECONNECT DUCTWORK TO NEW 7-AHU108.
- 5) RELOCATE STEAM HUMIDIFIER MANIFOLD TO FINAL LOCATION.
- 7) ENERGIZE EXISTING EXHAUST FAN 7-EF108.
- 8) ENERGIZE 7-AHU108 AND BALANCE TO SCHEDULED AIRFLOW.
- 9) REMOVE TEMPORARY DUCT.
- 10) BUILD NEW PORTION OF EXTERIOR WALL TO MATCH EXISTING CONSTRUCTION, INSTALL NEW LOUVER AND PAINT EXTERIOR TO MATCH EXISTING.
- 11) ON COMPLETION OF ALL NEW EQUIPMENT INSTALLATION REMOVE ALL TEMPORARY EQUIPMENT, DUCTWORK, PIPING AND SUPPORTS. AREA TO BE RETURNED TO ORIGINAL CONDITION AND MEET COR REQUIREMENTS.

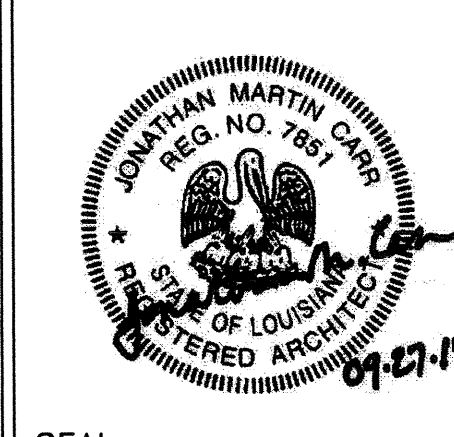


(F1) PHASING DIAGRAM - PHASE 1 - 7-AHU107  
SCALE: 1/8" = 1'-0" 0 4' 8' 16'

PHASING DIAGRAM - PHASE 2 - 7-AHU108

[illegible]

Department of Veterans Affairs  
Alexandria VA Health Care System  
2495 Shreveport Highway  
Pineville, LA 71360



Architect/Engineer Address



**Design & Management Solutions for the Built Environment**

8016 TOWER POINT DRIVE P 704.814.1322  
CHARLOTTE, NC 28227 F 704.321.0835

[WWW.HSHPC.COM](http://WWW.HSHPC.COM)


COPYRIGHT © 2012 HARRELL SALTTRICK & HOPPER, PC  
HSH PROJECT # 12013

Recommended Approvals:	
1. MEDICAL DIRECTOR	6. OPERATIONS SERVICE LINE MANAGER
2. ASSOCIATE DIRECTOR	7. INFECTION CONTROL MANAGER
3. CHIEF OF STAFF	8. SAFETY MANAGER
4. ASSOC. DIRECTOR	9. GENERAL ENGINEER
5. SERVICE LINE MGRS.	10. COR

	Drawing Title
	PHASING
	DIAGRAMS

FINAL BID DOCUMENTS

Project Title	DESIGN BUILDING 7 AIR HANDLER UPGRADE - PROJECT A: 7-AHU107 & 7-AHU108
---------------	--

Drawn DWS	Building Number 7	AutoCAD File Name
Checked JW/SZ	Reviewed 	Const. Contract No.

Date  
SEPT. 27, 2013

Project Number  
502-12-201

DRAWING No.  
**GI102**

