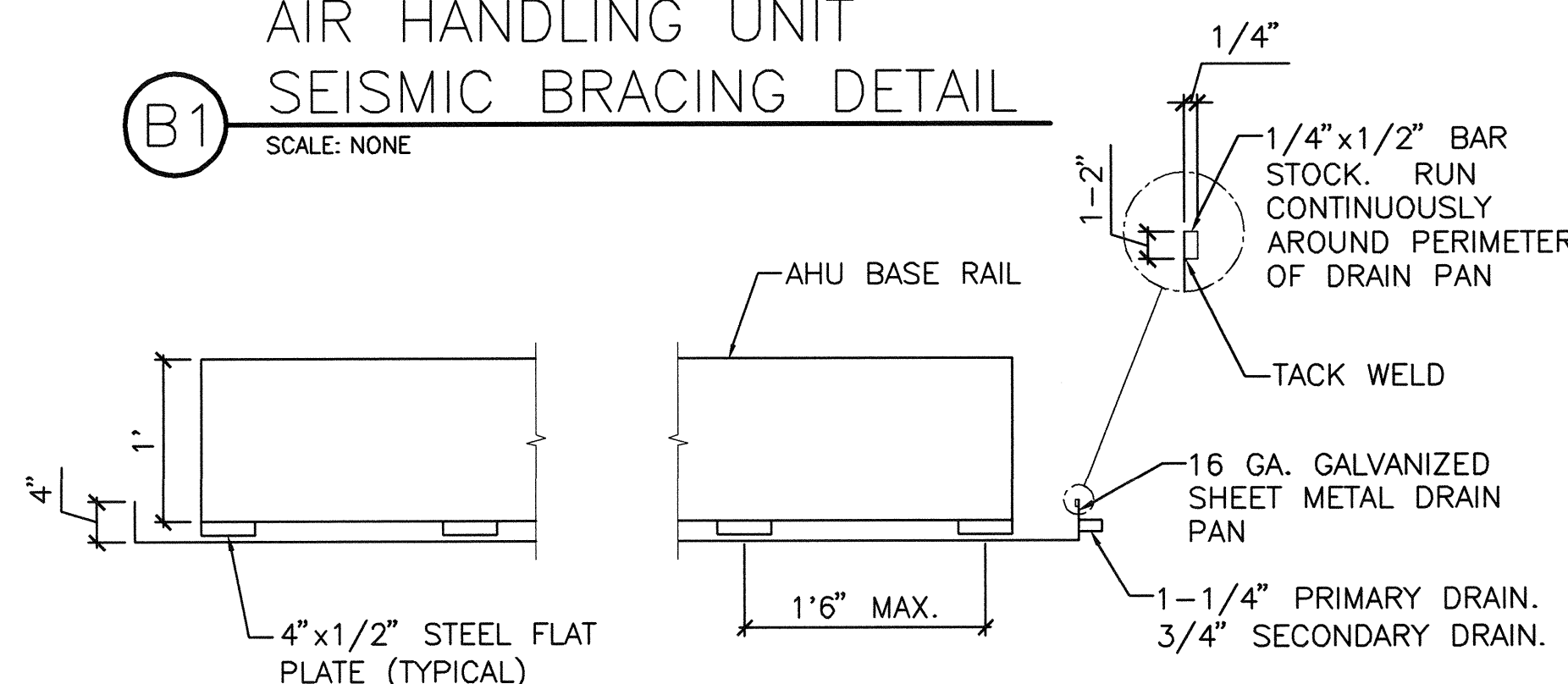


NOTES:
1. SEISMIC BRACING TYPICAL AT FOUR CORNERS OF EACH AIR HANDLING UNIT.

B1 AIR HANDLING UNIT SEISMIC BRACING DETAIL

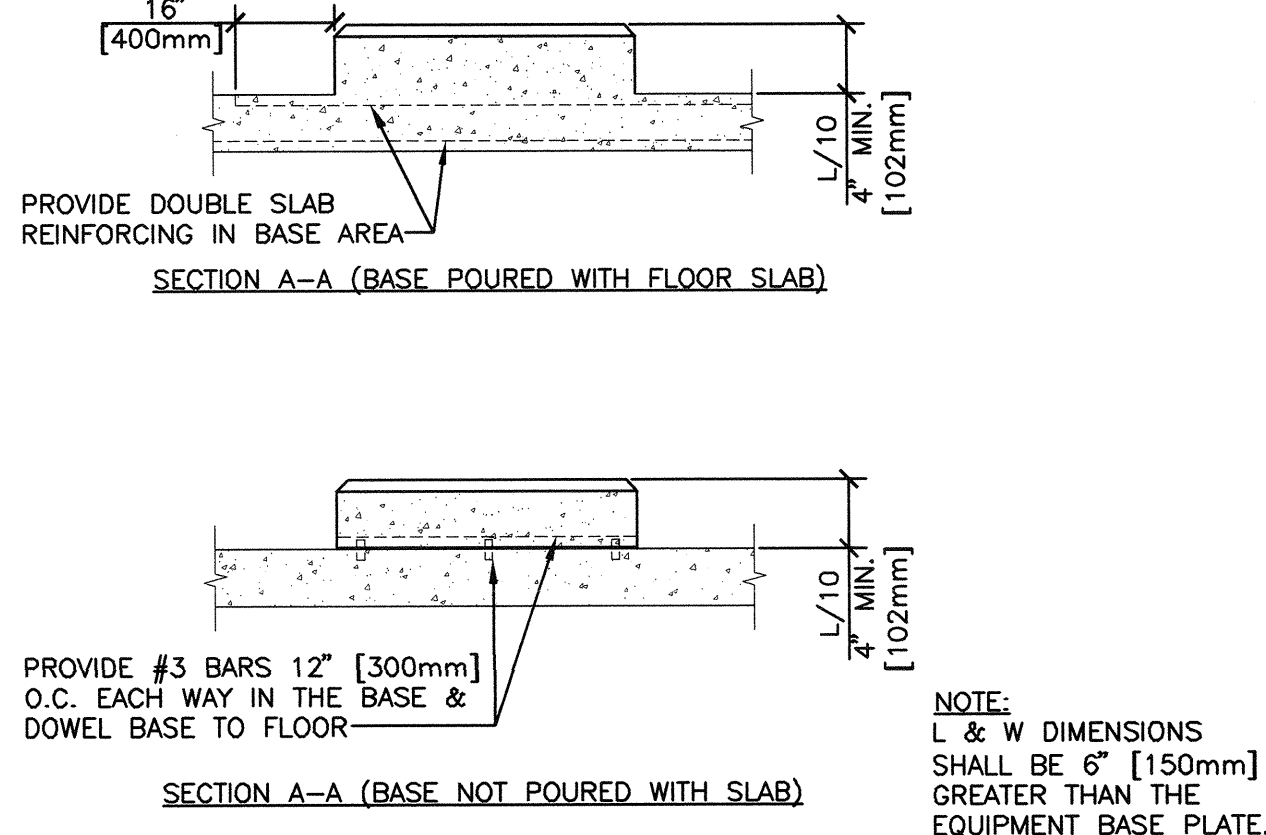
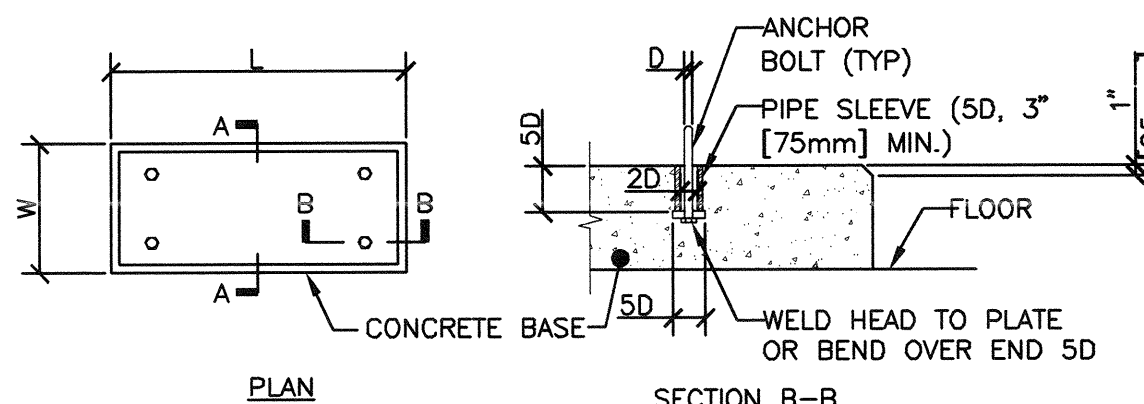
SCALE: NONE



NOTES:
1. DIMENSIONS OF DRAIN PAN SHALL EXTEND 4" EACH DIRECTION FROM THE EDGE OF THE AIR HANDLING UNIT.
2. SPACE 6" LONG x WIDTH OF AHU BASE RAIL x 1/2" THICK STEEL FLAT PLATE EVENLY UNDER AIR HANDLER, NOT MORE THAN 1'6" MAX O.C.

D1 AIR HANDLING UNIT SECONDARY DRAIN PAN DETAIL

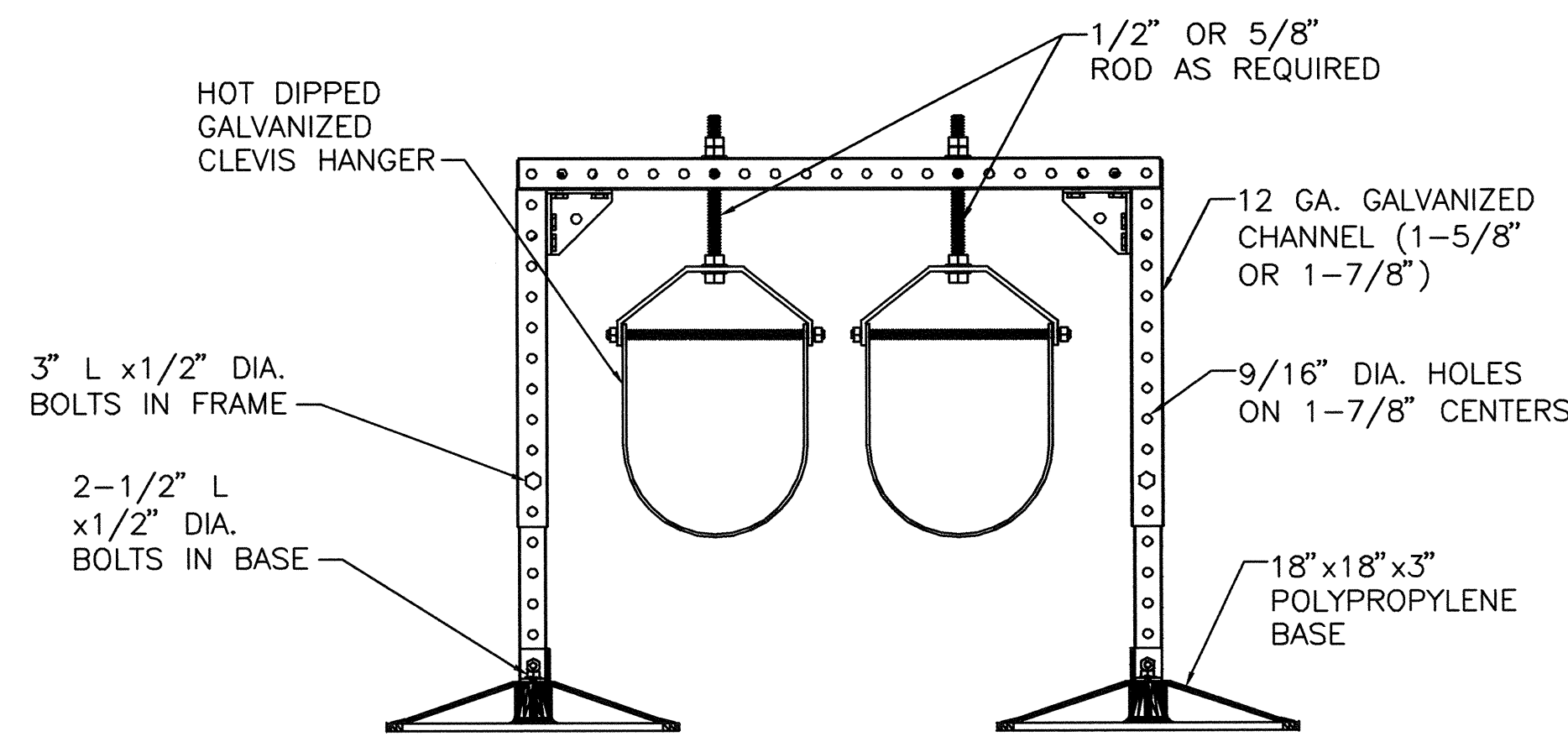
SCALE: NONE



F1 CONCRETE EQUIPMENT BASES

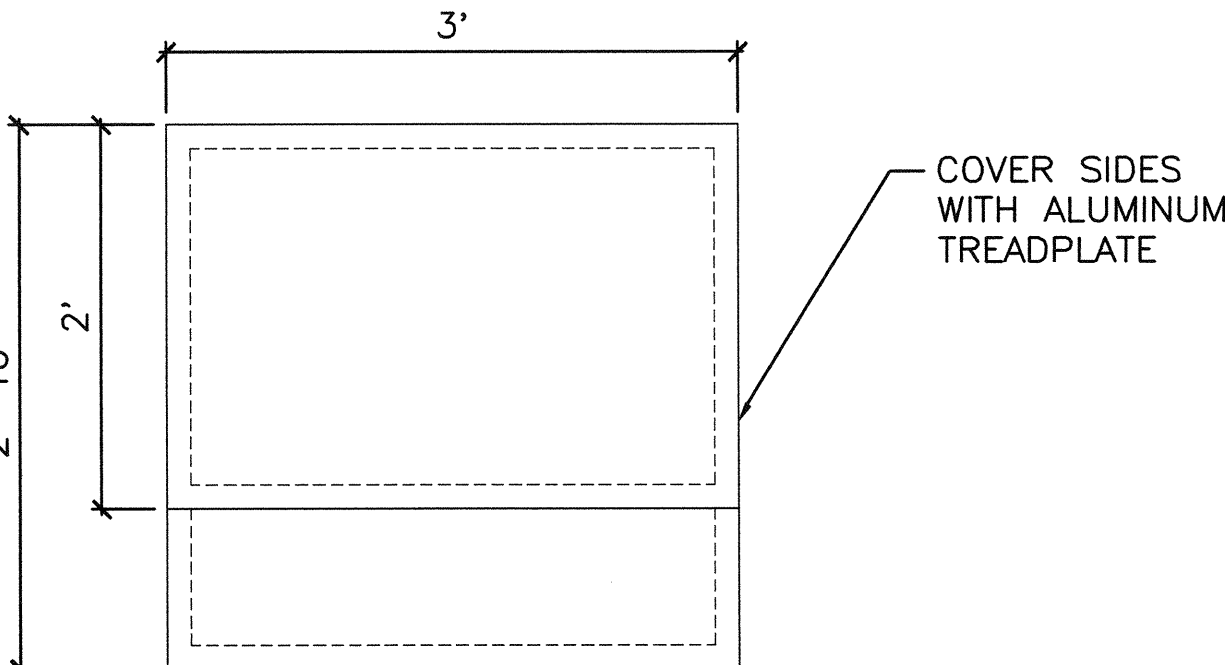
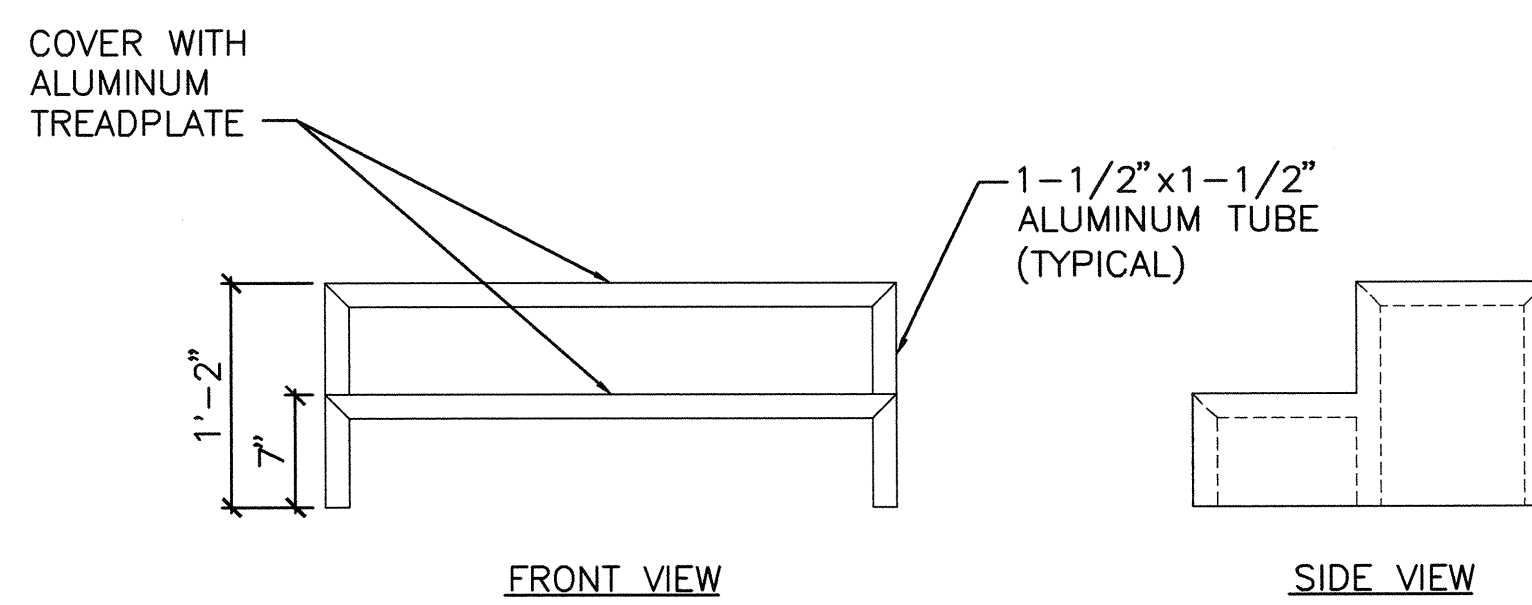
SCALE: NONE

VA CAD DETAIL #: SD230541-03.DWG



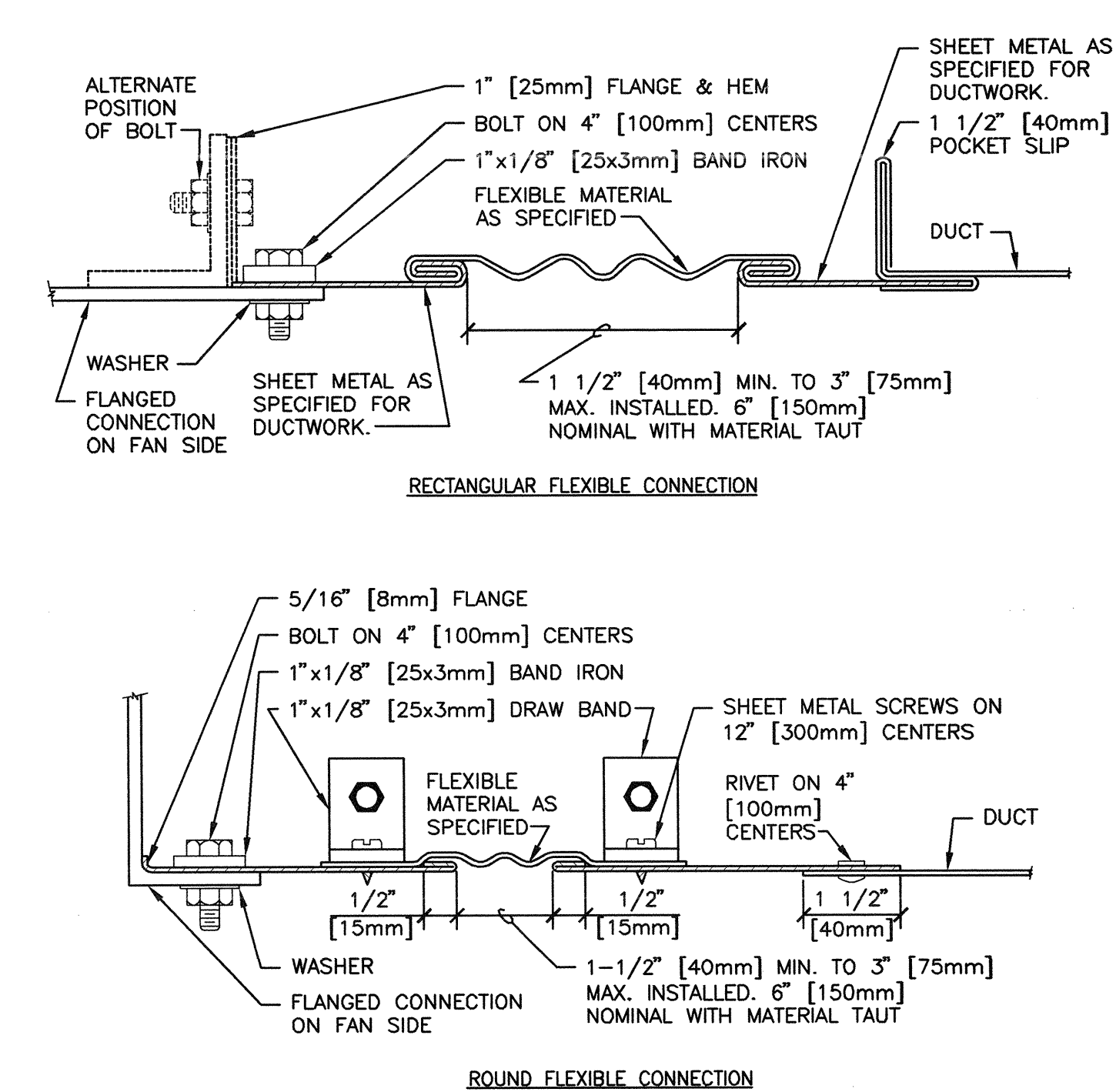
B3 TYPICAL TEMPORARY PIPE SUPPORT DETAIL

SCALE: NONE



D3 MOVEABLE STEP

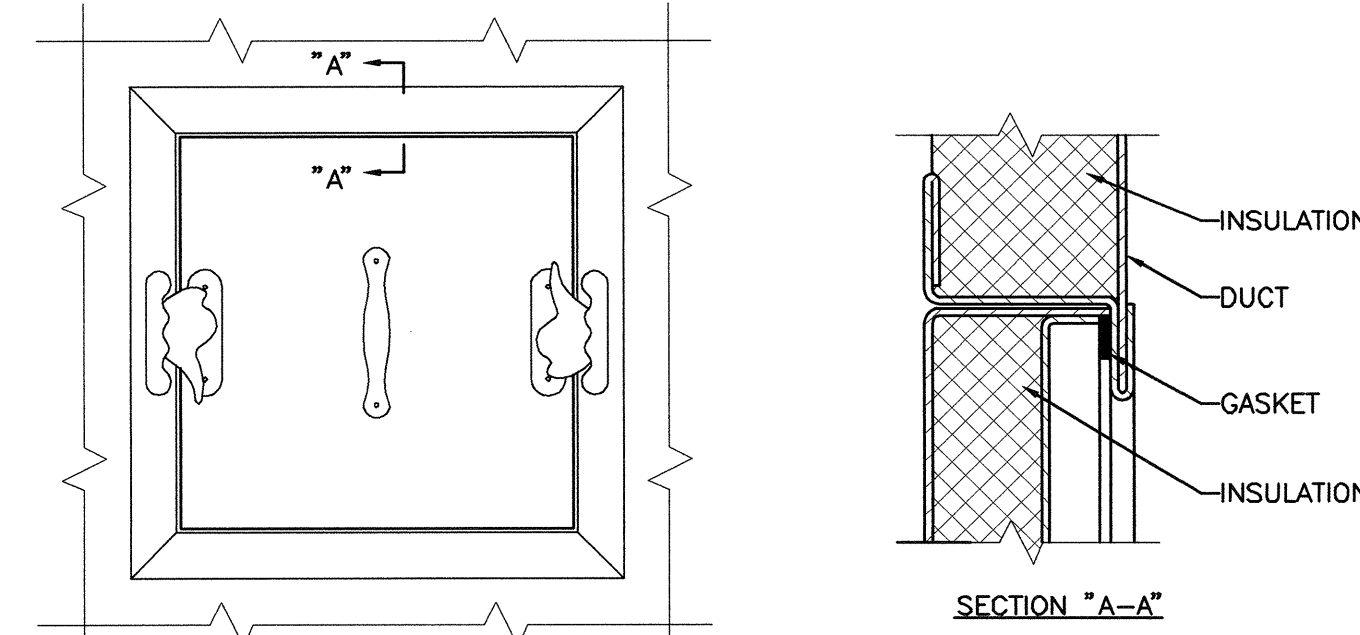
SCALE: NONE



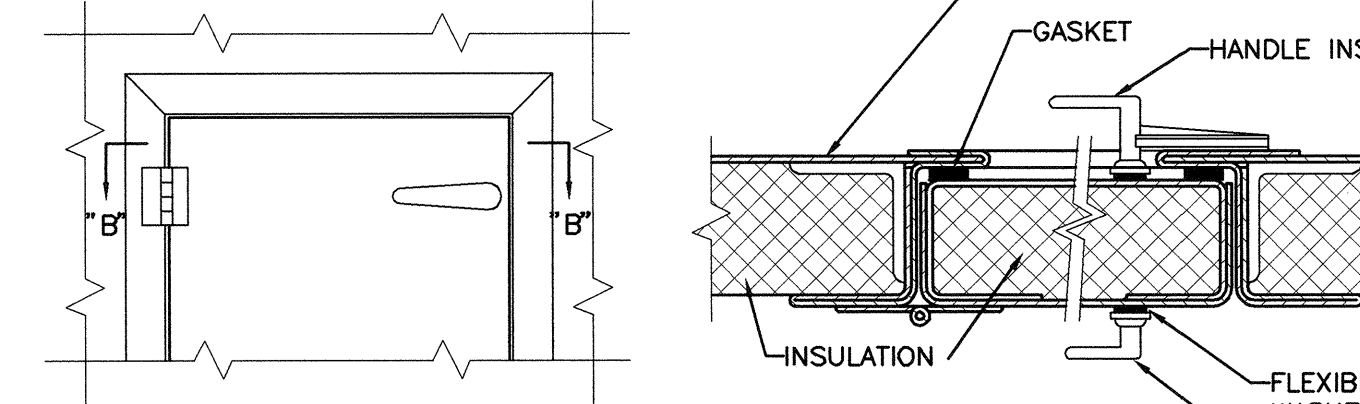
F3 FLEXIBLE DUCT CONNECTIONS

SCALE: NONE

VA CAD DETAIL #: SD233100-11.DWG



ACCESS PANEL

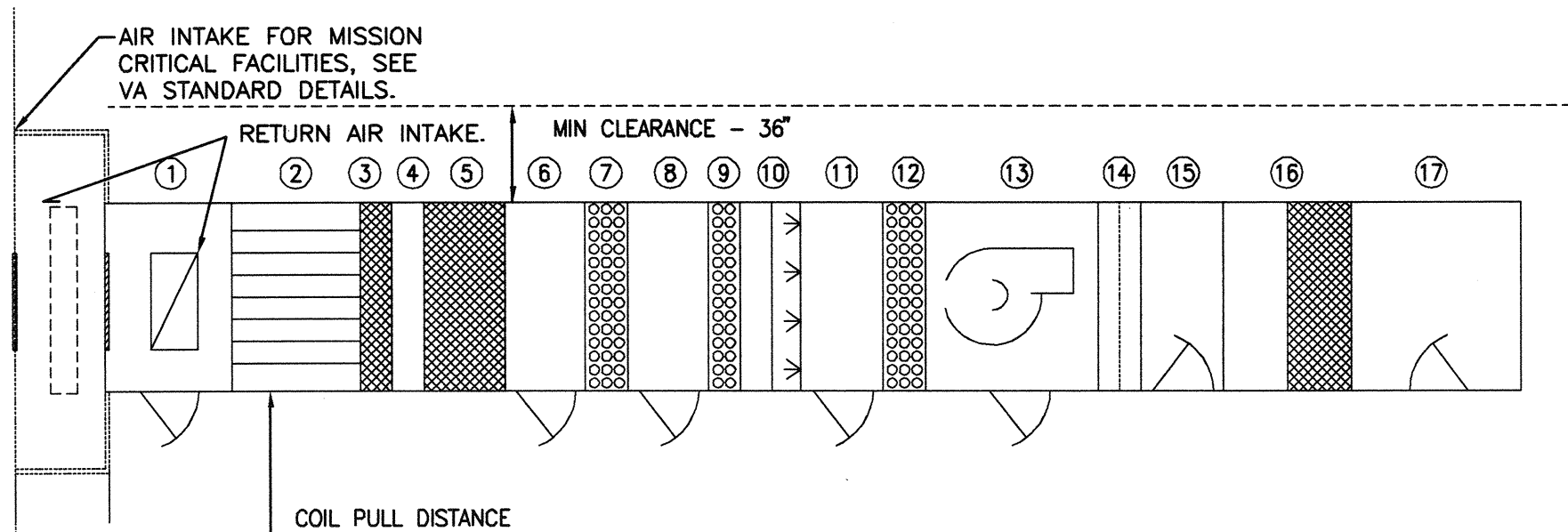


NOTES:
1. LATCHES SHALL BE OF THE WEDGE TYPE TO CLOSE DOORS TIGHTLY.
2. HINGES ON THE ACCESS DOORS SHALL HAVE NON-CORROSIVE PINS.
3. SEE SMACNA 2005, FIGURE 9-15

C6 ACCESS PANEL AND DOOR DETAIL

SCALE: NONE

VA CAD DETAIL #: SD233100-09.DWG



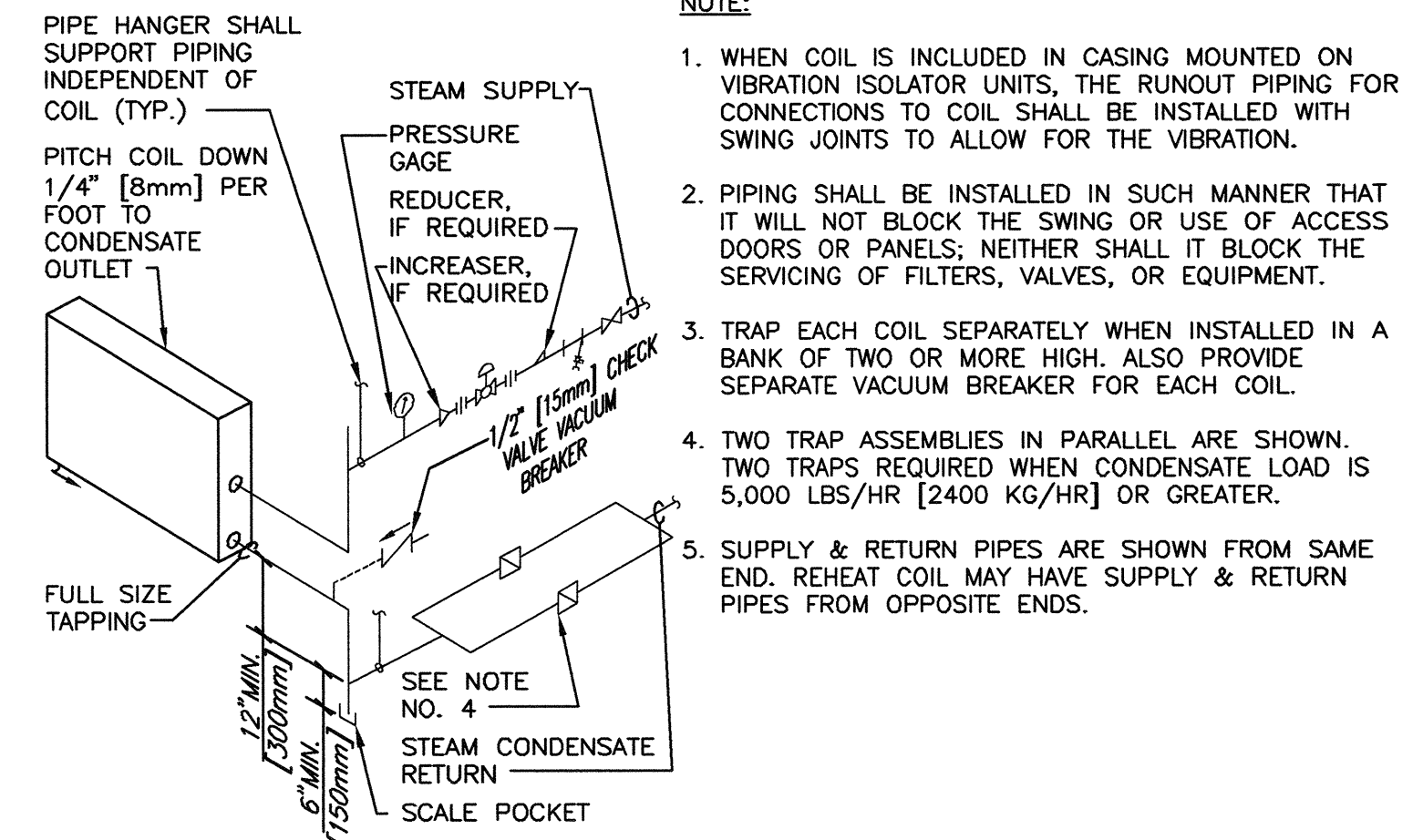
AIR HANDLING UNIT	ITEM	MINIMUM OUTSIDE AIR TWO BEDS OF FILTERS VAV	MINIMUM OUTSIDE AIR THREE BEDS OF FILTERS CV	100% OUTSIDE AIR TWO BEDS OF FILTERS CV	100% OUTSIDE AIR THREE BEDS OF FILTERS CV
* MIXING BOX	1	YES	YES	NO	NO
* BLENDER	2	YES	YES	NO	NO
* PRE-FILTERS (SIDE ACCESS)	3	YES	YES	YES	YES
* INSPECTION SECTION SMALL	4	YES	YES	YES	YES
* AFTER FILTER (SIDE ACCESS)	5	YES	YES	YES	YES
* ACCESS SECTION, MED-LARGE	6	YES	YES	YES	YES
* HEAT RECOVERY COIL	7	NO	NO	YES	YES
* ACCESS SECTION, MED-LARGE	8	NO	NO	YES	YES
* PRE-HEAT COIL	9	YES	YES	YES	YES
* INSPECTION SECTION SMALL	10	YES	YES	YES	YES
* HUMIDIFIER	11	YES	YES	YES	YES
* COOLING COIL	12	YES	YES	YES	YES
* FAN	13	YES	YES	YES	YES
* DIFFUSER PLATE	14	NO	NO	NO	YES
* ACCESS SECTION, MED-LARGE	15	NO	NO	YES	YES
* HEPA FILTER	16	NO	NO	NO	YES
* DISCHARGE PLENUM (VERTICAL)	17	YES	YES	YES	YES

* AS REQUIRED

F5 ACCESS DOOR SWING DETAIL FOR AIR HANDLING UNITS

SCALE: NONE

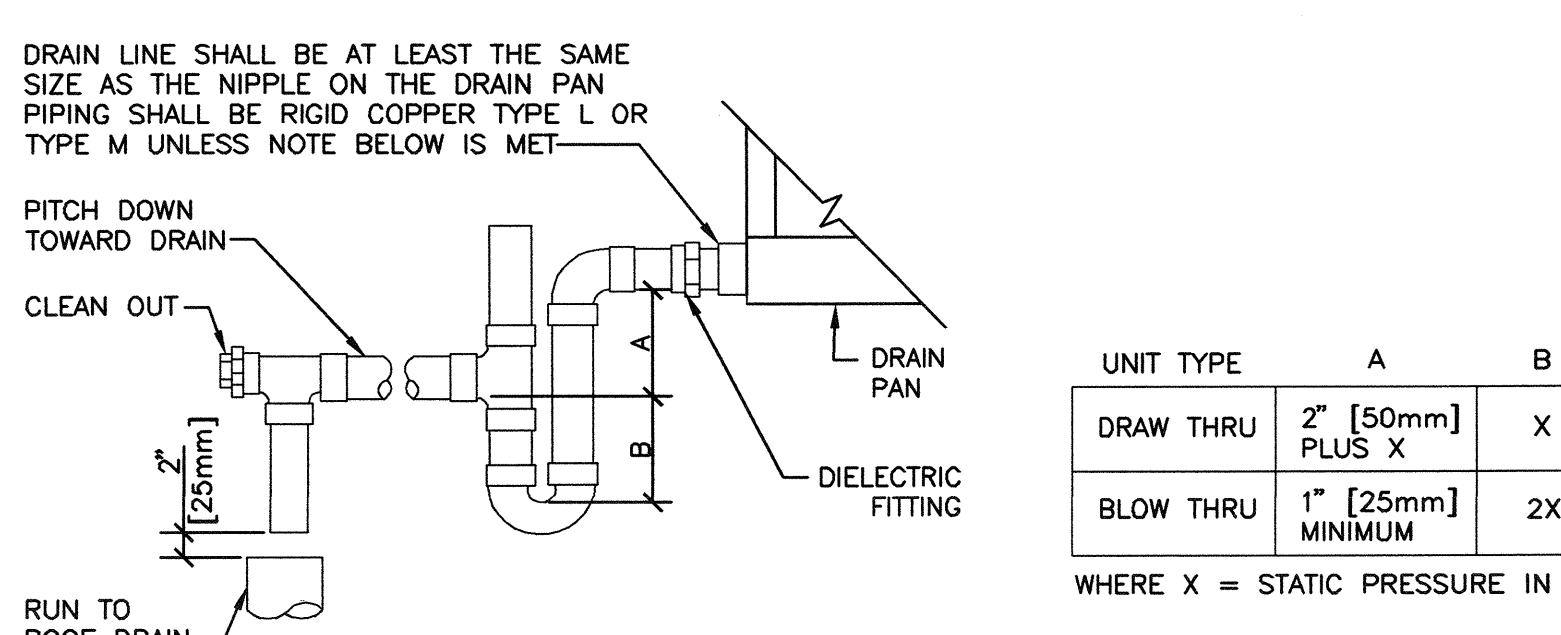
VA CAD DETAIL #: SD237300-01.DWG



B8 STEAM COIL PIPING CONNECTIONS

SCALE: NONE

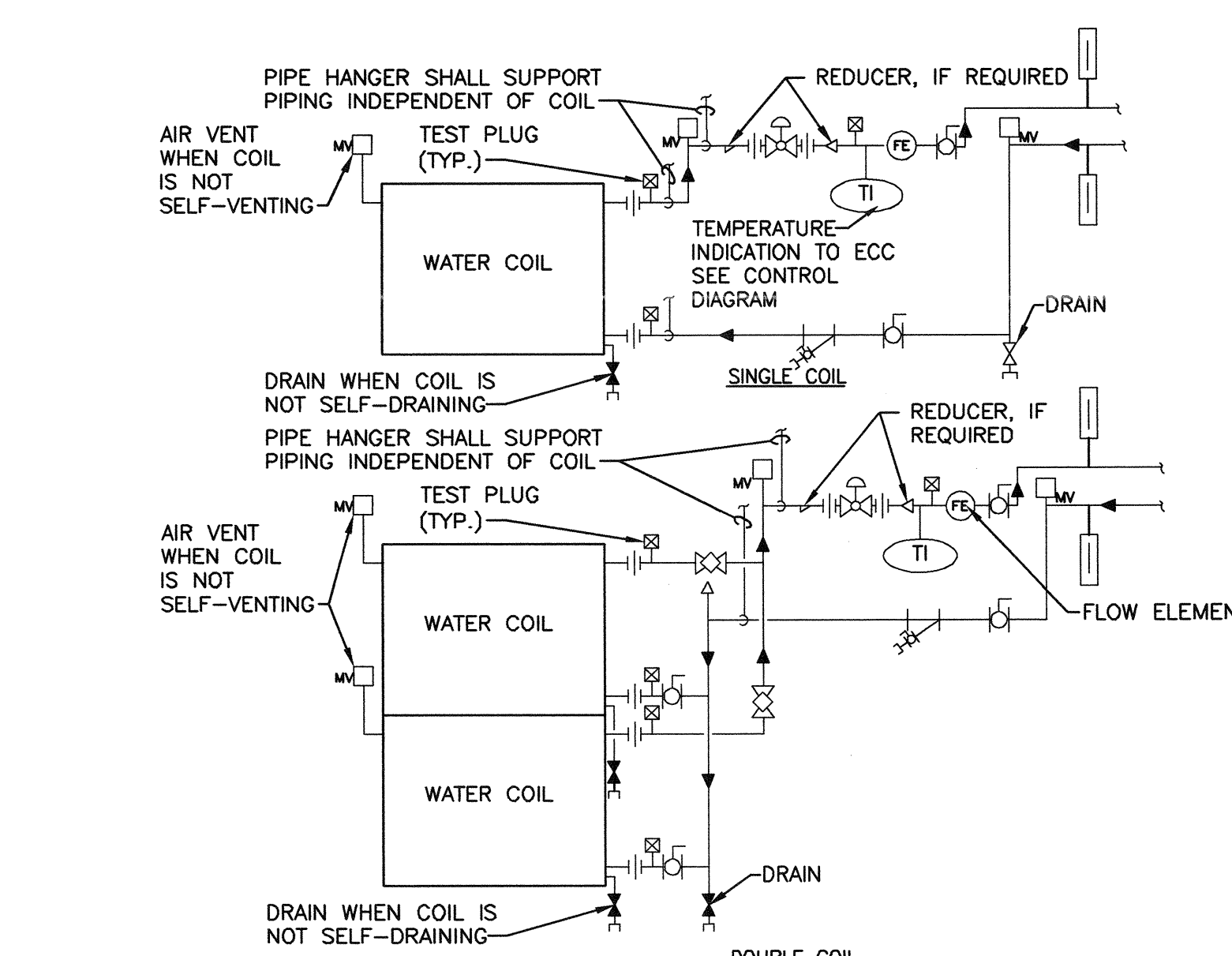
VA CAD DETAIL #: SD238216-03.DWG



D8 AIR HANDLING UNIT DRAIN TRAP DETAIL

SCALE: NONE

VA CAD DETAIL #: SD232113-08.DWG



F8 WATER COILS - PIPING CONNECTIONS

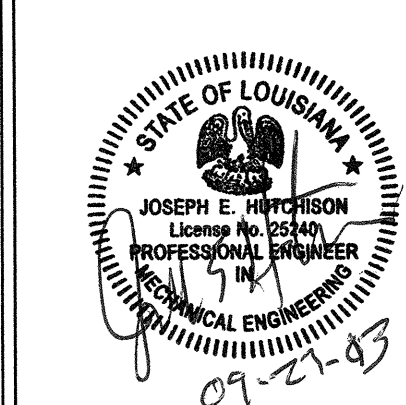
SCALE: NONE

VA CAD DETAIL #: SD238216-01.DWG

REVISION NO.	REVISION DESCRIPTION
1	
2	
3	
4	
5	
6	
7	
8	
9	
10	



Department of Veterans Affairs
Alexandria VA Health Care System
2495 Shreveport Highway
Pineville, LA 71360



Architect/Engineer Address
Harrell, Saltrick & Hopper
Design & Management Solutions for the Built Environment
8016 TOWER POINT DRIVE
CHARLOTTE, NC 28227
P 704.814.1320
F 704.320.9833
WWW.HSHPC.COM
COPYRIGHT © 2012 HARRELL, SALTRICK & HOPPER, PC
HSH PROJECT # 12013

Recommended Approvals:
1. MEDICAL DIRECTOR
2. ASSOCIATE DIRECTOR
3. CHIEF OF STAFF
4. ASSOC. DIRECTOR
5. SERVICE LINE MGRS.
6. OPERATIONS SERVICE LINE MANAGER
7. INFECTION CONTROL MANAGER
8. SAFETY MANAGER
9. GENERAL ENGINEER
10. COR

Drawing Title
MECHANICAL DETAILS
FINAL BID DOCUMENTS
Checked: *[Signature]*
Reviewed: *[Signature]*

Project Title
DESIGN BUILDING 7 AIR HANDLER UPGRADE - PROJECT A: 7-AHU107 & 7-AHU108
Drawn: DWS
Building Number: 7
AutoCAD File Name: *[File Name]*
Const. Contract No.: *[Contract No.]*

Date
SEPT. 27, 2013
Project Number
502-12-201
Drawing No.
M502

