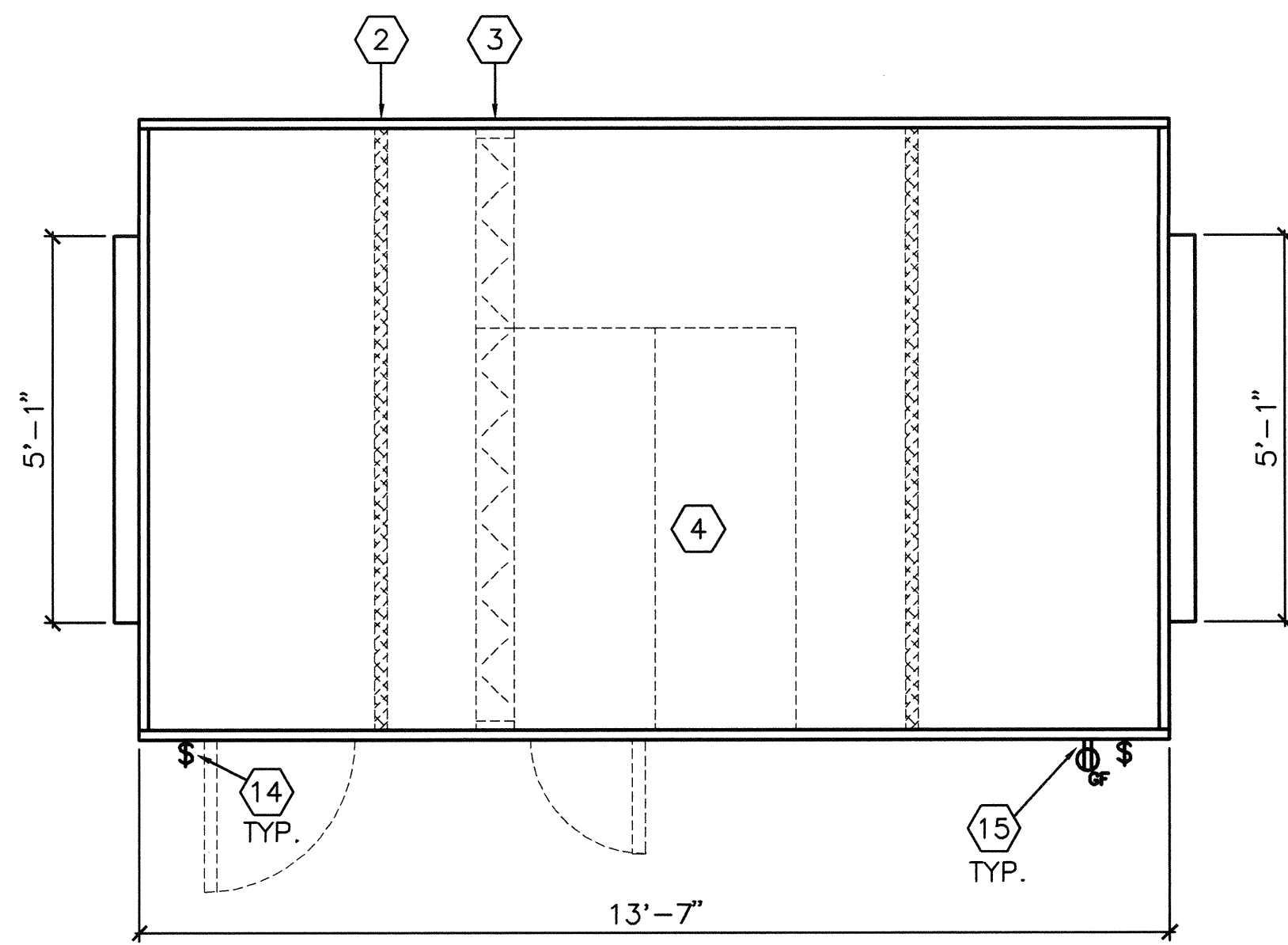
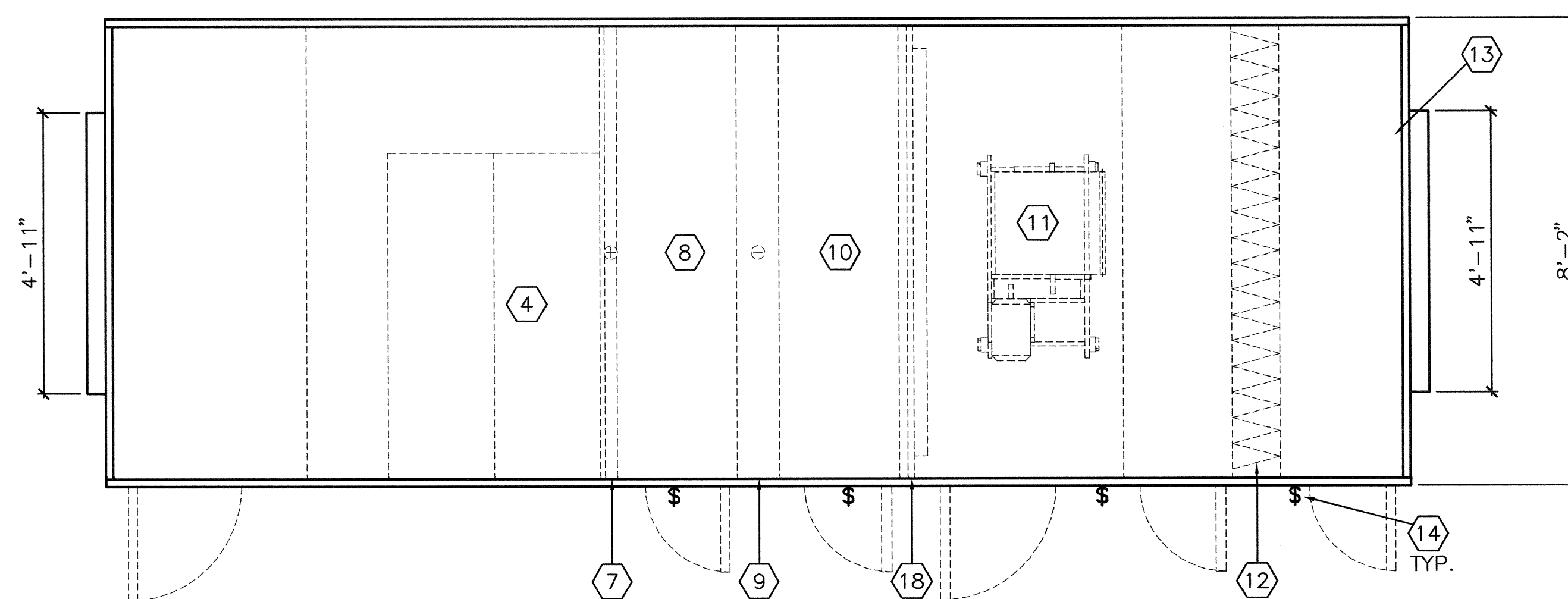


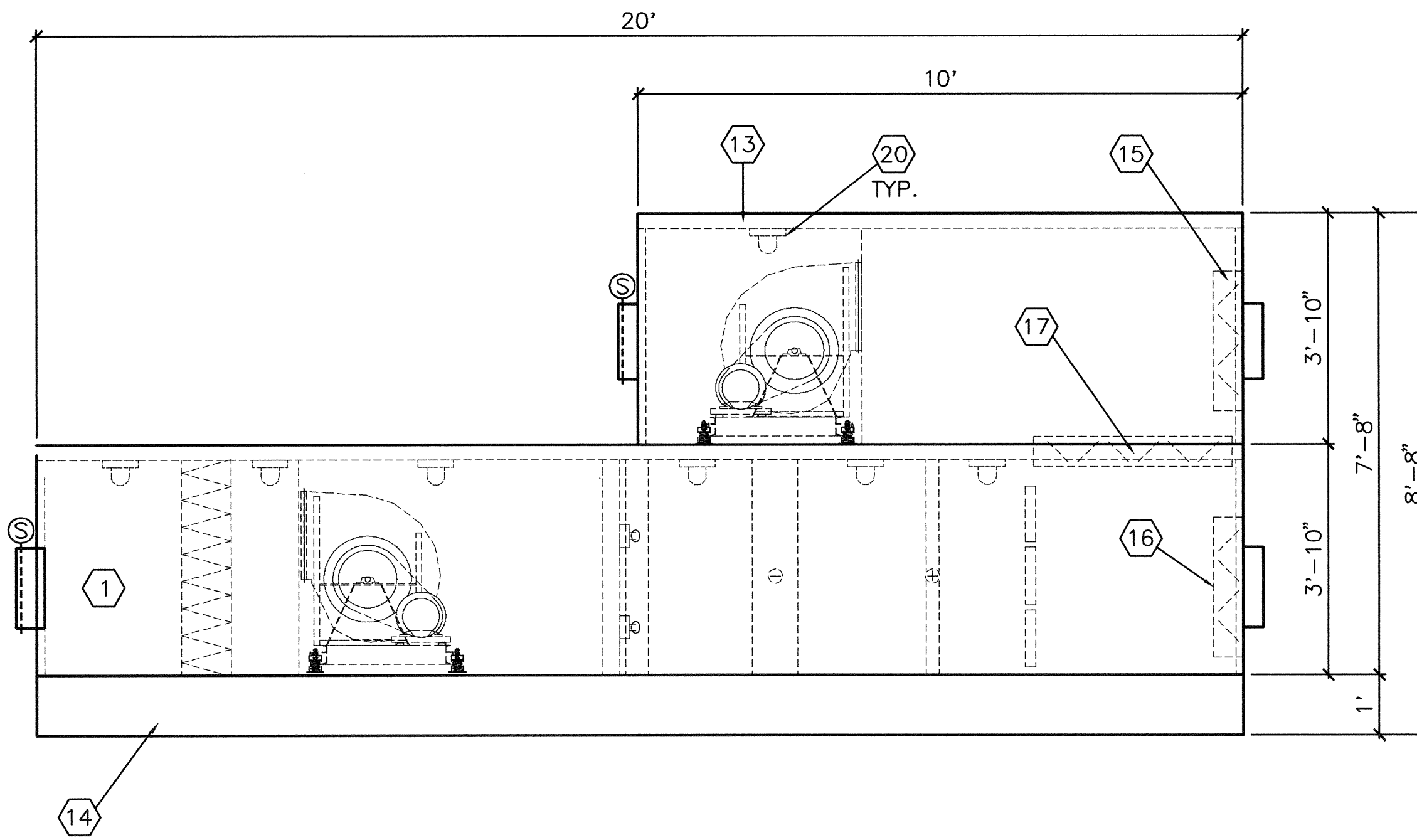
C1 AIR HANDLING UNIT 7-AHU108 - ELEVATION VIEW  
SCALE: 1/2" = 1'-0"



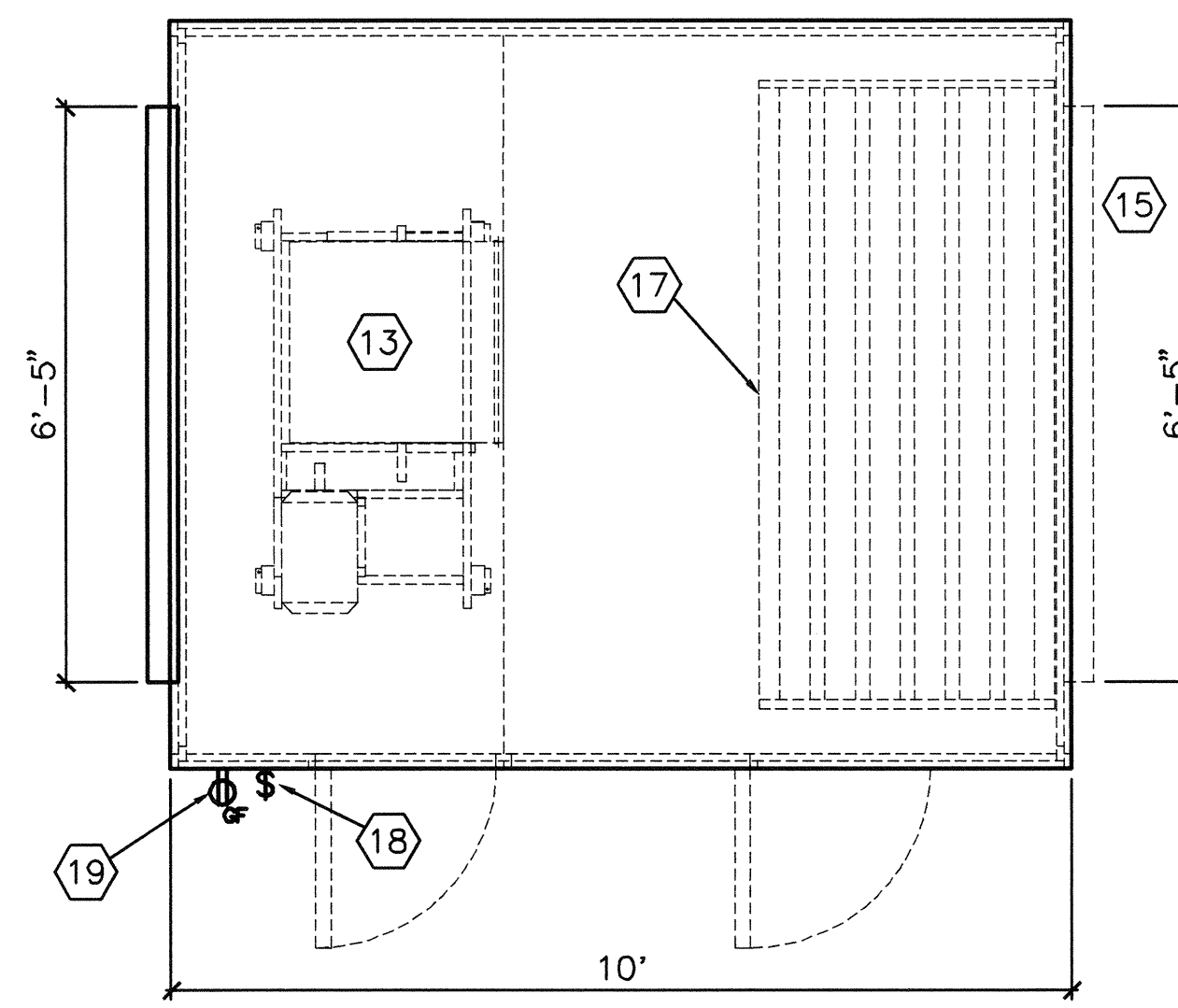
D1 AIR HANDLING UNIT 7-AHU108 - UPPER PLAN  
SCALE: 1/2" = 1'-0"



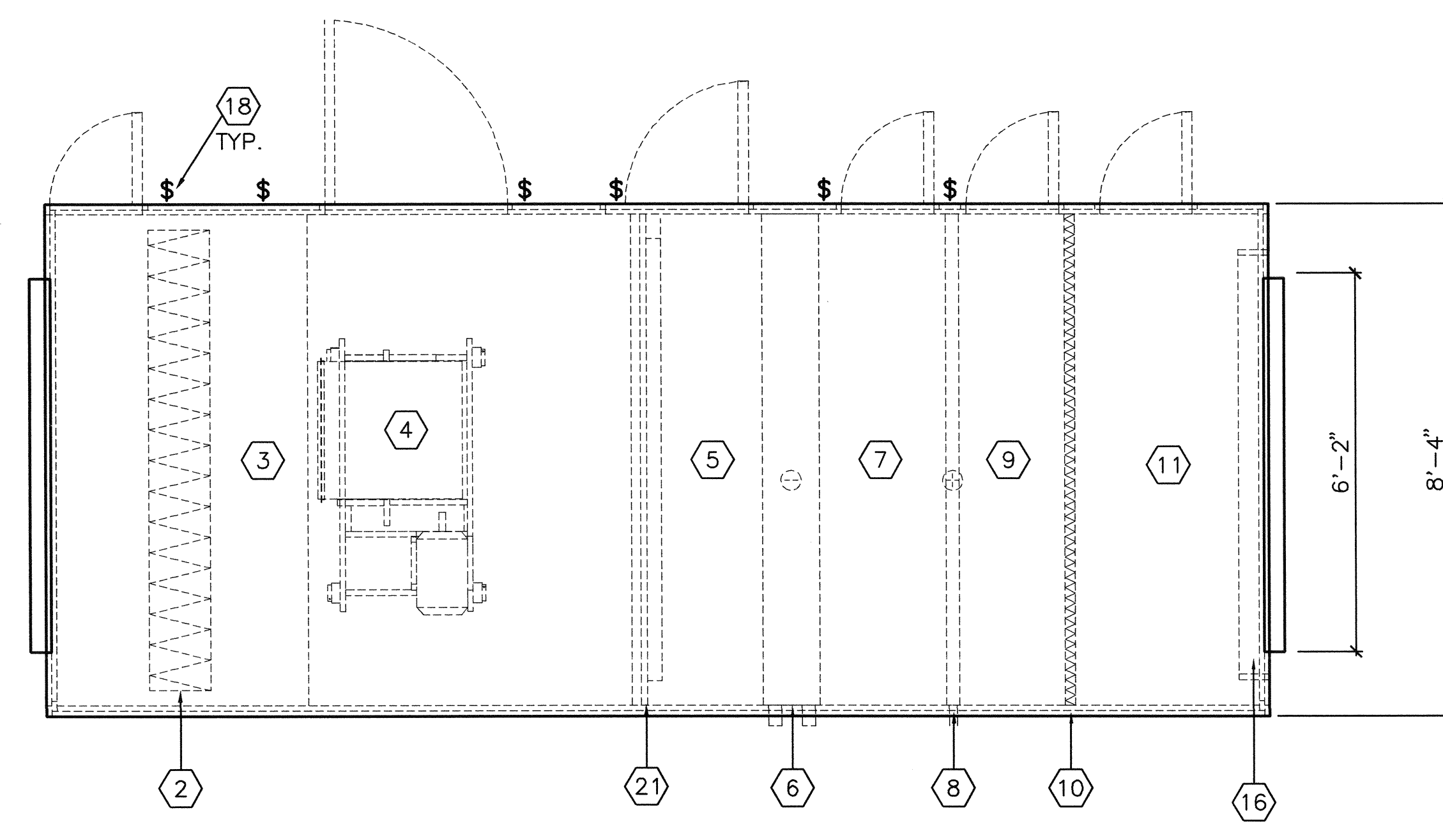
F1 AIR HANDLING UNIT 7-AHU108 - LOWER PLAN  
SCALE: 1/2" = 1'-0"



C5 AIR HANDLING UNIT 7-AHU107 - ELEVATION VIEW  
SCALE: 1/2" = 1'-0"



D5 AIR HANDLING UNIT 7-AHU107 - UPPER PLAN  
SCALE: 1/2" = 1'-0"



F5 AIR HANDLING UNIT 7-AHU107 - LOWER PLAN  
SCALE: 1/2" = 1'-0"

#### 7-AHU107 KEYNOTES

1. DISCHARGE PLENUM SECTION WITH ACCESS AND MARINE LIGHT. PROVIDE UL555S RATED SMOKE DAMPER (4 ACTUATORS).
2. FINAL FILTER (MERV 14) SECTION.
3. DIFFUSER SECTION WITH ACCESS AND MARINE LIGHT.
4. SUPPLY AIR FAN SECTION WITH ACCESS AND MARINE LIGHT.
5. ACCESS SECTION WITH MARINE LIGHT.
6. CHILLED WATER COIL SECTION.
7. ACCESS SECTION WITH MARINE LIGHT.
8. STEAM PREHEAT COIL SECTION.
9. ACCESS SECTION WITH MARINE LIGHT.
10. PREFILTERS (MERV 7)
11. AIR MIXING SECTION.
12. RELIEF AIR SECTION.
13. RETURN FAN SECTION WITH ACCESS DOOR AND MARINE LIGHT.
14. UNIT MANUFACTURER PROVIDED 12" HIGH BASE RAIL.
15. RELIEF AIR LOUVER WITH MOTOR OPERATED DAMPER.
16. OUTSIDE AIR LOUVER WITH MOTOR OPERATED DAMPER.
17. RETURN AIR LOUVER WITH MOTORIZED OPERATED DAMPER.
18. LIGHT SWITCH (TYPICAL)
19. GFI OUTLET
20. SERVICE LIGHT (TYPICAL)
21. ULTRAVIOLET LIGHT SECTION

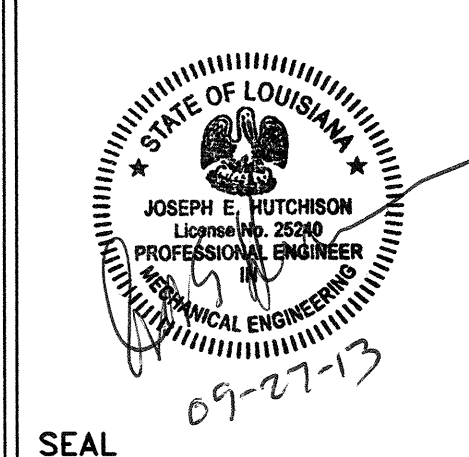
#### 7-AHU108 KEYNOTES

1. OUTSIDE AIR INLET SECTION
2. PANEL FILTERS.
3. HEAT EXCHANGER DAMPER.
4. HEAT EXCHANGER SECTION.
5. EXHAUST AIR INTAKE.
6. EXHAUST AIR OUTLET.
7. STEAM PREHEAT COIL SECTION.
8. ACCESS SECTION WITH MARINE LIGHT.
9. CHILLED WATER COIL SECTION.
10. ACCESS SECTION WITH MARINE LIGHT.
11. SUPPLY AIR FAN SECTION WITH ACCESS AND MARINE LIGHT.
12. FINAL FILTER (MERV 14) SECTION.
13. DISCHARGE PLENUM SECTION WITH ACCESS AND MARINE LIGHT. PROVIDE UL555S RATED SMOKE DAMPER (4 ACTUATORS).
14. LIGHT SWITCH (TYPICAL)
15. GFI OUTLET
16. SERVICE LIGHT (TYPICAL)
17. UNIT MANUFACTURER PROVIDED 12" HIGH BASE RAIL
18. ULTRAVIOLET LIGHT SECTION

REVISION NO.	REVISION DESCRIPTION
1	
2	
3	
4	
5	
6	
7	
8	
9	
10	



Department of Veterans Affairs  
Alexandria VA Health Care System  
2495 Shreveport Highway  
Pineville, LA 71360



Architect/Engineer Address  
**Harrell, Saltrick & Hopper**

Design & Management Solutions for the Built Environment  
8015 TOWER POINT DRIVE  
CHARLOTTE, NC 28227  
P 704.814.1320  
F 704.321.0833  
WWW.HSHPC.COM  
COPYRIGHT © 2012 HARRELL, SALTTRICK & HOPPER, PC  
HSH PROJECT # 12013

Recommended Approvals:	
1. MEDICAL DIRECTOR	6. OPERATIONS SERVICE LINE MANAGER
2. ASSOCIATE DIRECTOR	7. INFECTION CONTROL MANAGER
3. CHIEF OF STAFF	8. SAFETY MANAGER
4. ASSOC. DIRECTOR	9. GENERAL ENGINEER
5. SERVICE LINE MGRS.	10. COR

Drawing Title <b>MECHANICAL UNIT PLANS AND ELEVATIONS</b>
FINAL BID DOCUMENTS

Project Title <b>DESIGN BUILDING 7 AIR HANDLER UPGRADE - PROJECT A: 7-AHU107 &amp; 7-AHU108</b>	Drawn DWS	Building Number 7	AutoCAD File Name
	Checked B/S	Reviewed C/M	Const. Contract No.

Date SEPT. 27, 2013
Project Number 502-12-201
DRAWING No. <b>M503</b>

