



GARAGE TO BE REPAIRED
B-19

Van Buren St
1st St
1st Ave

 Department of
Veterans Affairs

AB	ANCHOR BOLT
AC	AIR CONDITIONING
ACT	ACOUSTICAL CEILING TILE
ADDL	ADDITIONAL
ADJ	ADJUSTABLE
AFF	ABOVE FINISH FLOOR
ALT	ALTERNATE
AL	ALUMINUM
ARCH	ARCHITECTURAL
ASPH	ASPHALT

CB	CATCH BASIN
CC	CENTER TO CENTER
CEM	CEMENT
CG	CORNER GUARD
CJ	CONSTRUCTION JOINT or CONTROL JOINT
GLG	CEILING
CMU	CONCRETE MASONRY UNIT
COL	COLUMN
COMP	COMPACT(ED)
CONC	CONCRETE
CONST	CONSTRUCTION
CONT	CONTINUOUS
COORD	COORDINATE
CPT	CARPET
CRS	COURSE
CT	CERAMIC TILE

EA	EACH
EL	ELEVATION
ELEC	ELECTRIC
ELEV	ELEVATION
EQ	EQUAL
EW	EACH WAY
EXT	EXTERIOR
EXG	EXISTING

GC	GENERAL CONTRACTOR
GL	GLASS
G&N	GLUE and NAIL
GWB	GYPSTUM WALL BOARD
GP	GYPSTUM

INS	INSULATION
INT	INTERIOR
JAN.	JANITORIAL
JST	JOIST
JT	JOINT

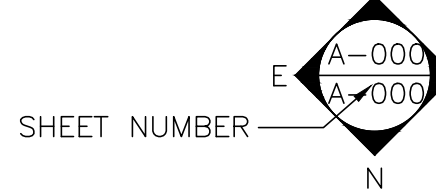
MAT	MATERIAL
MAX	MAXIMUM
MECH	MECHANICAL
MFGR	MANUFACTURER
MH	MAN HOLE
MIN.	MINIMUM
MO	MASONRY OPENING
MTL	METAL

OC	ON CENTER
OHD	OVERHEAD DOOR
OPNG	OPENING

SC	SOLID CORE
SCWD	SOLID CORE WOOD DOOR
SD	SMOKE DETECTOR
SF	SQUARE FEET
SFLR	SUB-FLOOR
SIM	SIMILAR
SL	SLOPE
SOG	SLAB-ON-GRADE
SPEC	SPECIFICATIONS
STL	STEEL
STR	STRUCTURAL
SV	SHEET VINYL FLOORING

VB	VAPOR BARRIER
VCT	VINYL COMPOSITION TILE
VERT	VERTICAL

DETAIL MARKER



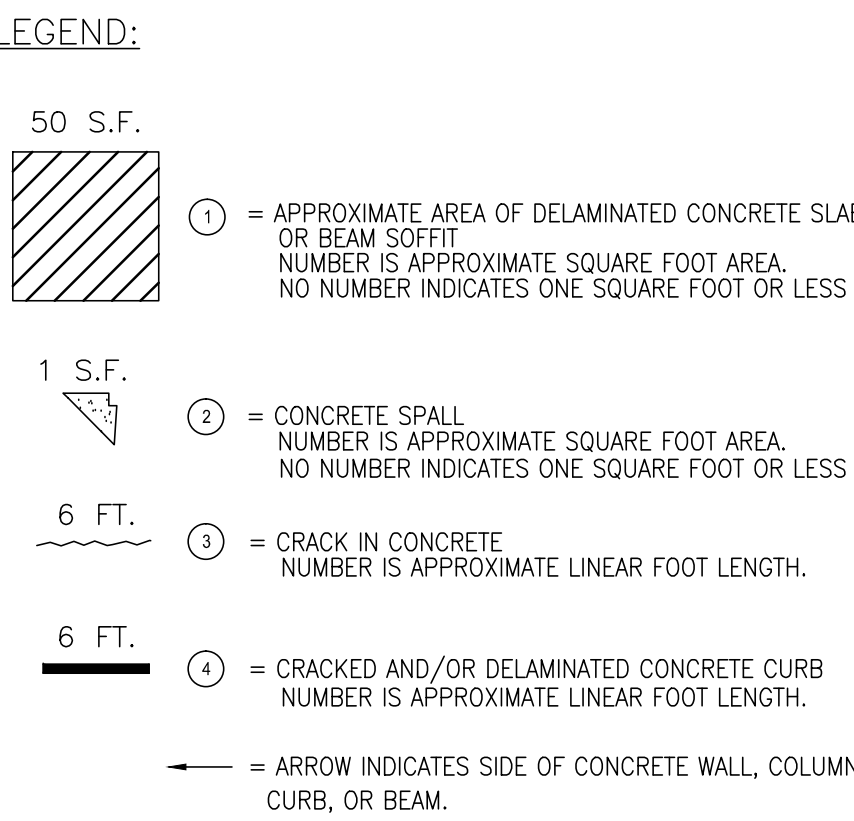
1. ALL WORK SHALL BE DONE IN ACCORDANCE WITH ALL APPLICABLE CODES, ORDINANCES AND ACCEPTED INDUSTRY STANDARDS.
2. THE CONTRACTOR SHALL BE RESPONSIBLE FOR VERIFYING ALL EXISTING CONDITIONS AND ESTABLISHING THE COMPATIBILITY OF ALL NEW WORK WITH THE EXISTING CONDITIONS.
3. ALL WORK IS TO BE DONE IN OCCUPIED SPACE. CONTRACTOR TO TAKE EVERY PRECAUTION TO ELIMINATE THE TRAVEL OF DUST AND DEBRIS FROM THE CONSTRUCTION AREA TO ADJACENT SPACES.
4. CONTRACTOR SHALL PATCH ALL AREAS EFFECTED BY DEMOLITION. NEW SURFACES TO BE FILLED AND FINISHED TO MATCH ADJACENT SURFACE OR AS SPECIFIED.
5. THE CONTRACTOR SHALL BE RESPONSIBLE FOR THE PROTECTION AND CONTINUOUS MAINTENANCE OF ALL WORK FROM DAMAGE AND SHALL PROTECT THE OWNERS' PROPERTY FROM DAMAGE OR LOSS BY DUST, DEBRIS, THEFT, FIRE OR ANY OTHER PHYSICAL DAMAGE IN CONNECTION WITH THE CONTRACT.
6. COMPLY WITH GOVERNING REGULATIONS PERTAINING TO ENVIRONMENTAL PROTECTION FOR POLLUTION CONTROL AND HAZARDOUS MATERIALS.
7. DRAWINGS ARE NOT SCALED AND SHALL NOT BE USED AS A BASIS FOR ESTABLISHING DIMENSIONS OR OTHER INFORMATION.
8. STRUCTURAL DRAWINGS SHALL BE USED IN CONJUNCTION WITH THE SPECIFICATIONS.
9. ALL DIMENSIONS AND CONDITIONS MUST BE VERIFIED BY THE CONTRACTOR IN THE FIELD AND ANY DISCREPANCIES SHALL BE BROUGHT TO THE ATTENTION OF THE OWNER BEFORE PRECEDING WITH THE AFFECTED PORTION OF THE WORK.
10. UNLESS OTHERWISE NOTED, DETAILS SHOWN ON ANY DRAWINGS ARE TO BE CONSIDERED TYPICAL FOR ALL SIMILAR CONDITIONS.
11. THE CONTRACTOR SHALL PROVIDE ALL TEMPORARY BRACING AND SHORING AS REQUIRED TO PREVENT DANGER TO PERSONS AND PROPERTY.
12. THE INFORMATION ABOUT EXISTING STRUCTURAL MEMBERS SHOWN ON THESE DRAWINGS IS BASED ON THE STRUCTURAL DRAWINGS PREPARED BY STECO ENGINEERING CORP., DATED 4/10/1980.
13. THE CONTRACTOR MUST VERIFY IN THE FIELD, PRIOR TO SUBMITTING THE BID, THE ESTIMATED QUANTITIES OF ALL OF THE REPAIRS, THE APPROXIMATE LOCATIONS AND EXTENT OF THE REPAIRS ARE SHOWN ON THE DRAWINGS, BUT THESE AREAS SHOULD BE VERIFIED AND SHALL NOT BE SCALED.
14. THE CONTRACTORS MUST LIST IN THEIR BIDS, THE ESTIMATED QUANTITIES ON WHICH THEIR BID IS BASED AND SHALL PROVIDE A UNIT PRICE FOR EACH TYPE OF REPAIR.
15. CHIPPING HAMMERS USED TO REMOVE LOOSE AND DETERIORATED CONCRETE SHALL NOT EXCEED 15 POUNDS. SPECIAL CARE SHOULD BE EXERCISED IN REMOVING UNSOUND CONCRETE FROM AROUND REINFORCING STEEL AND EMBEDDED ITEM TO PREVENT LOSS OF BOND IN THE REMAINING SOUND CONCRETE.

16. FILL CRACKS FULLY WITH APPROVED EPOXY RESIN ADHESIVE.
17. AFTER THE CRACKS ARE COMPLETELY FILLED AND THE EPOXY RESIN ADHESIVE HAS BEEN ALLOWED TO CURE, CLEAN SURFACE AND FINISH FLUSH WITH THE ADJACENT CONCRETE.
18. ALL CONCRETE REPAIR CUTS SHALL BE PERPENDICULAR OR PARALLEL TO GARAGE STRUCTURE.
19. ALL DIMENSIONS AND CONDITIONS MUST BE VERIFIED BY CONTRACTOR IN THE FIELD AND ANY DISCREPANCIES SHALL BE BROUGHT TO THE ATTENTION OF THE OWNER AND EVERETT ENGINEERS BEFORE PROCEEDING WITH THE AFFECTED PORTION OF THE WORK.
20. THE ELEVATED SLABS BETWEEN THE SECOND AND SIXTH LEVEL ARE POST-TENSIONED, THE CONTRACTOR SHALL BE EXTREMELY CAREFUL AND AVOID DAMAGING THE POST-TENSIONING CABLES, ANY DAMAGE DONE TO THE POST-TENSIONING CABLES AS A RESULT OF THE CONTRACTOR'S WORK SHALL BE REPAIRED BY THE CONTRACTOR AT NO COST TO THE VA.


1. ALL NEW CAST-IN-PLACE CONCRETE SHALL HAVE A MINIMUM COMPRESSIVE STRENGTH OF 6000 PSI AT 28 DAYS.
2. ALL NEW REINFORCING BARS SHALL CONFORM TO A615 AND ASTM A 706, GRADE 60 DEFORMED BARS.
3. ALL WELDING OF REINFORCING BARS SHALL CONFORM TO AWS 1.4 STRUCTURAL WELDING CODE-REINFORCING STEEL. USE E60 OR E70 - LOW HYDROGEN ELECTRODES. PRIOR TO ANY FIELD WELD TO THE EXISTING REINFORCING STEEL, THE WELDABILITY OF THE REINFORCING BAR AND ANY REQUIRED SPECIAL PRECAUTIONS AS PREHEATING SHALL BE DETERMINED BY A TESTING AGENCY BASED ON A SMALL SAMPLE TAKEN FROM EXISTING REBAR.
4. ALL FIELD FULL PENETRATION WELDS SHALL BE INSPECTED AND ULTRASONICALLY TESTED BY AN INDEPENDENT TESTING AGENCY. SEE CONCRETE NOTE 6.
5. DETAILS NOT SHOWN ON THE DRAWINGS SHALL BE IN ACCORDANCE WITH THE LATEST EDITION OF THE ACI DETAILING MANUAL 315.
6. ALL TESTING TO BE BOURNE AND PAID FOR BY THE CONTRACTOR.

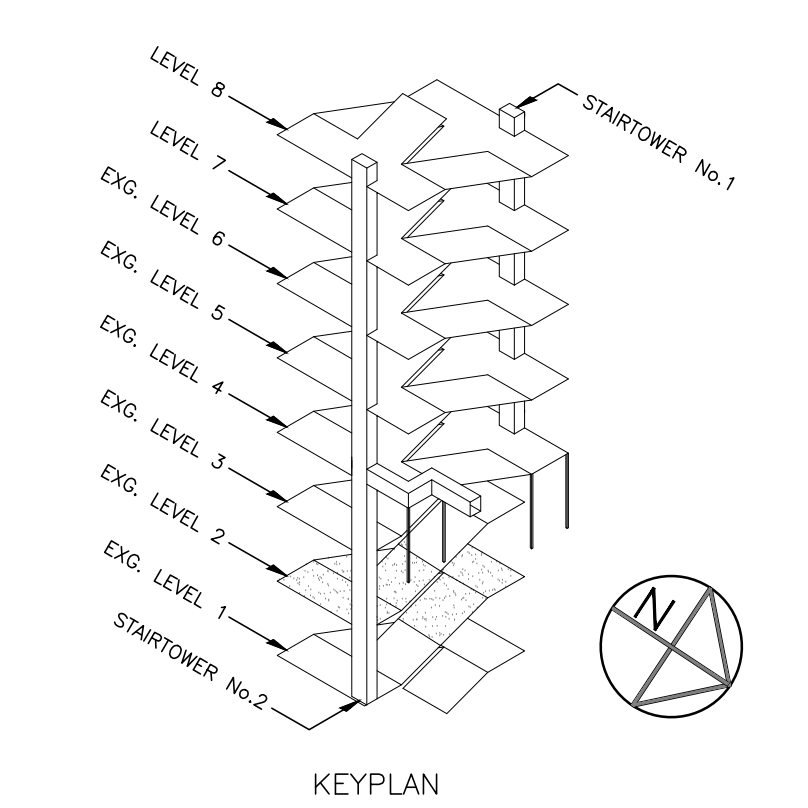
1. ALL EXISTING DRAINS AND LEADERS SHALL BE CLEANED OUT.
2. REPOSITION OR REPLACE EXISTING DRAINS DUE TO NEW SLOPING TOPPING SLABS.
3. LEAKING DRAINS BETWEEN 6TH AND 8TH LEVEL SHALL BE REPAIRED AND THE LEAKING STOPPED BEFORE ANY REPAIR WORK CAN COMMENCE.

VA FORM 08-6231

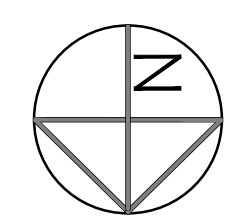


Office of
Construction
and Facilities
Management

 Department of
Veterans Affairs



← = ARROW INDICATES SIDE OF CONCRETE WALL, COLUMN, CURB, OR BEAM.



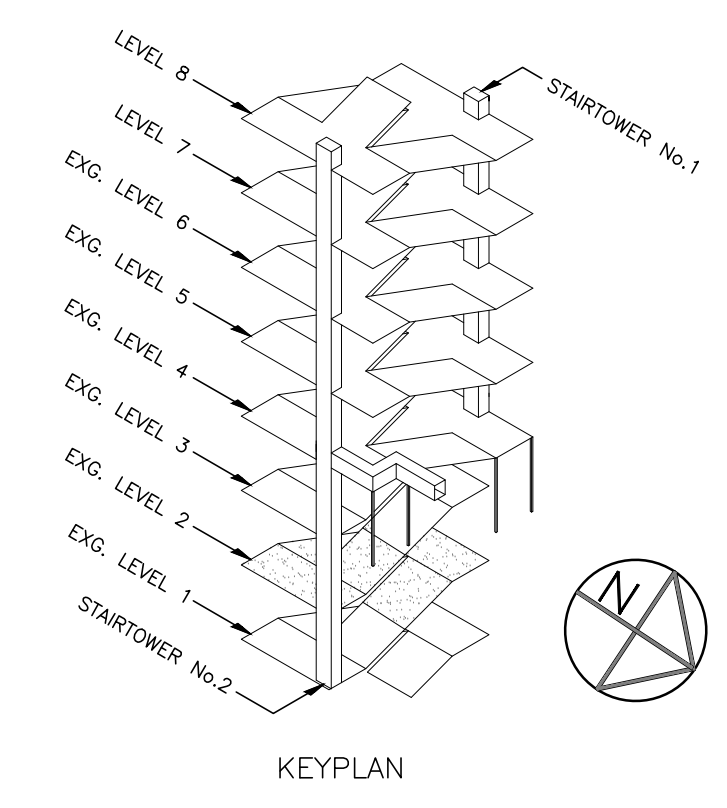
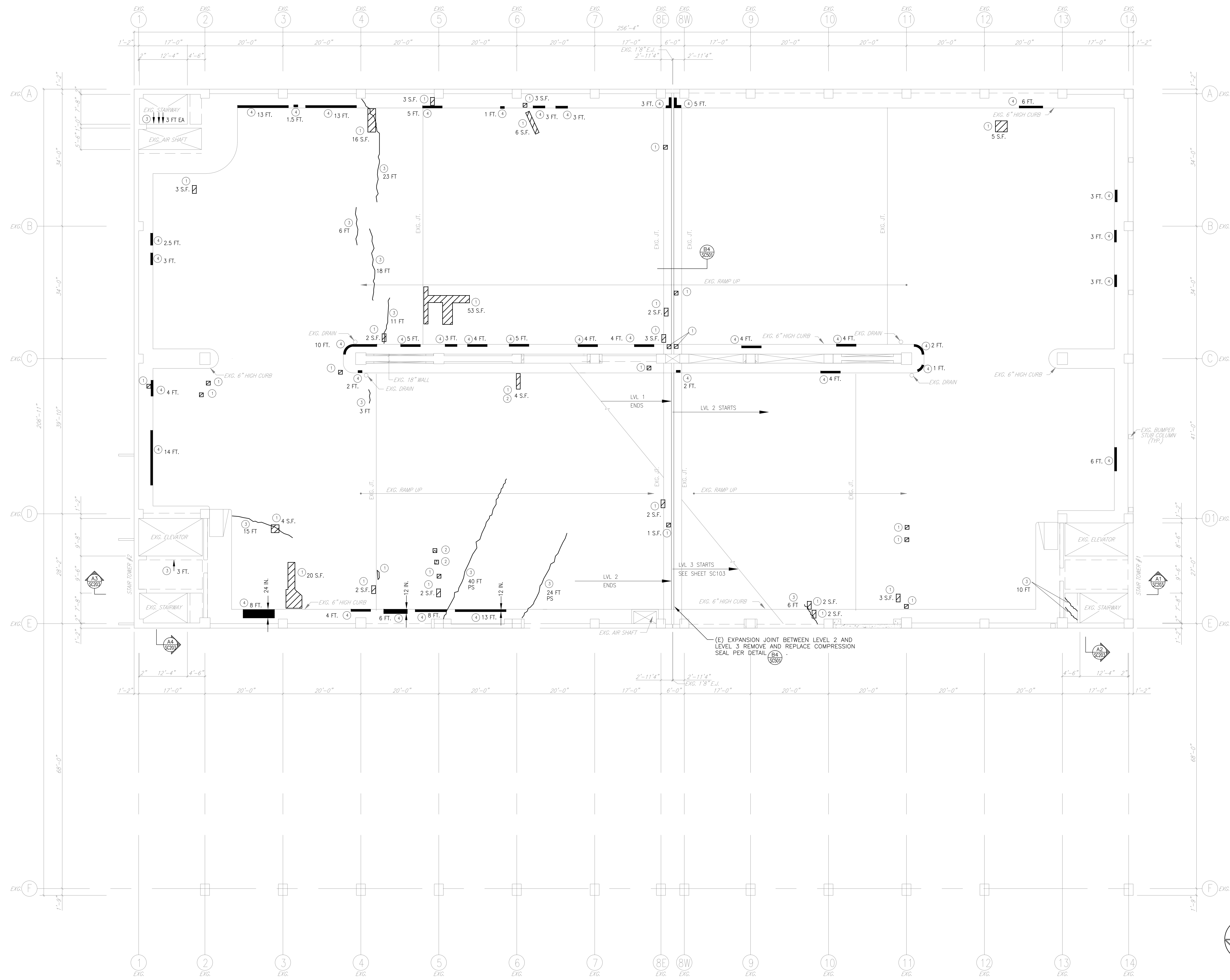
**EVERETT
ENGINEERS**

Dwg. 6 of 28



Department of
Veterans Affairs

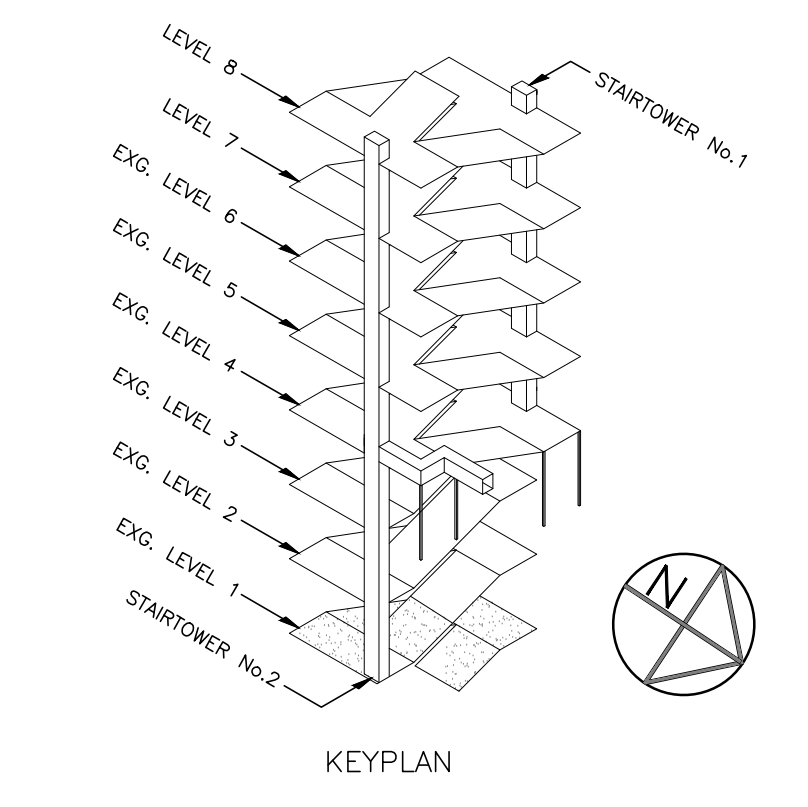
three eighths inch = one foot
one eighth inch = one foot
three eighths inch = one foot
one quarter inch = one foot
one half inch = one foot
one half inch = one foot
three quarters inch = one foot
one inch = one foot
one inch = one foot
one and one half inches = one foot
two inches = one foot
three inches = one foot



- NOTES:
- SIZES SHOWN AND LOCATIONS OF DETERIORATIONS ARE APPROXIMATE.
 - FOR REFERENCES, SEE GENERAL NOTES DRAWING G002.
 - CRACKS SMALLER THAN "X" SHALL BE PRESSURE INJECTED PER (A2) (359) .
 - CRACKS LARGER THAN "X" SHALL BE GROUTED AND SEALED PER (A2) (359) .
 - APPLY VEHICULAR TRAFFIC WATERPROOFING TO THE ENTIRE 2ND LEVEL.
 - SPALLS SHALL BE REPAIRED PER DETAIL (A2) (359) .

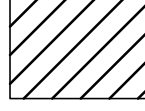
- LEGEND:
- 50 S.F. (diagonal hatching) ① = APPROXIMATE AREA OF DELAMINATED CONCRETE SLAB OR BEAM (SOFT) NUMBER IS APPROXIMATE SQUARE FOOT AREA. NO NUMBER INDICATES ONE SQUARE FOOT OR LESS
 - 1 S.F. (diagonal hatching) ② = CONCRETE SPALL NUMBER IS APPROXIMATE SQUARE FOOT AREA. NO NUMBER INDICATES ONE SQUARE FOOT OR LESS
 - 6 FT. (wavy line) ③ = CRACK IN CONCRETE NUMBER IS APPROXIMATE LINEAR FOOT LENGTH.
 - 6 FT. (solid line) ④ = CRACKED AND/OR DELAMINATED CONCRETE CURB NUMBER IS APPROXIMATE LINEAR FOOT LENGTH.
 - ARROW INDICATES SIDE OF CONCRETE WALL, COLUMN, CURB, OR BEAM.

Revisions		Date	
CONSULTANTS:		ARCHITECT/ENGINEERS:	
		EVERETT ENGINEERS	
		1740 MASSACHUSETTS AVE BOXBOROUGH, MA 01719 Phone: 978-266-3711 Fax: 978-266-3712	
		Drawing Title SECOND LEVEL PLAN	
		Approved Project Director	
		Project Title GARAGE STRUCTURAL REPAIR DESIGN	
		Location SYRACUSE	
		Date 1/24/2014	
		Checked RF	
		Drawn JPS	
		Project Number 528A7-12-701	
		Building Number 19	
		Drawing Number SC102	
		Dwg. 5 of 28	
		Office of Construction and Facilities Management	
		Department of Veterans Affairs	



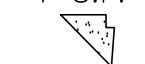
LEGEND:

50 S.F.




① = APPROXIMATE AREA OF DELAMINATED CONCRETE SLAB OR BEAM SOTTI
NUMBER IS APPROXIMATE SQUARE FOOT AREA
NO NUMBER INDICATES ONE SQUARE FOOT OR LESS

1 S.F.




② = CONCRETE SPALL
NUMBER IS APPROXIMATE SQUARE FOOT AREA
NO NUMBER INDICATES ONE SQUARE FOOT OR LESS

6 FT.



③ = CRACK IN CONCRETE
NUMBER IS APPROXIMATE LINEAR FOOT LENGTH.

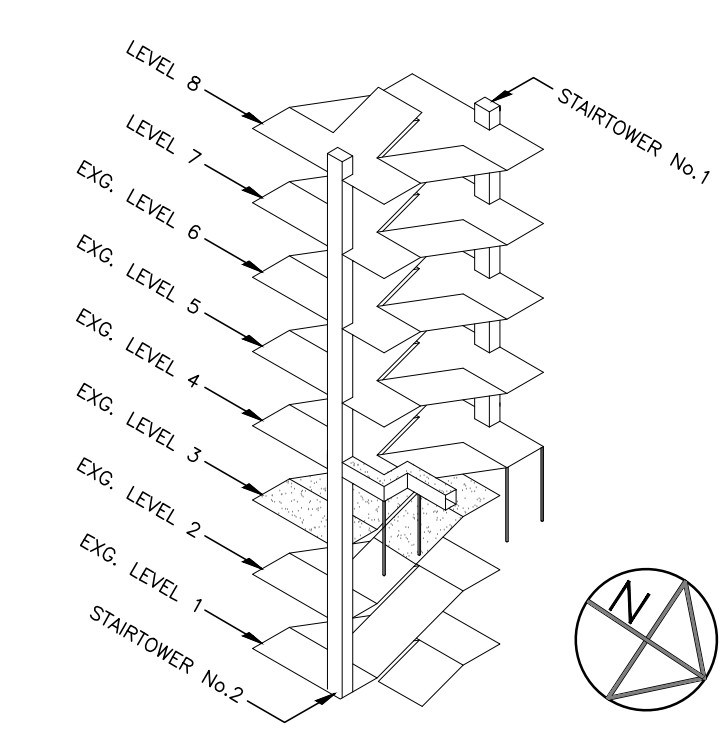
6 FT.



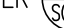




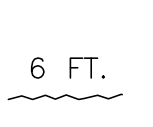

④ = CRACKED AND/OR DELAMINATED CONCRETE CURB
NUMBER IS APPROXIMATE LINEAR FOOT LENGTH.

← = ARROW INDICATES SIDE OF CONCRETE WALL, COLUMN, CURB, OR BEAM.

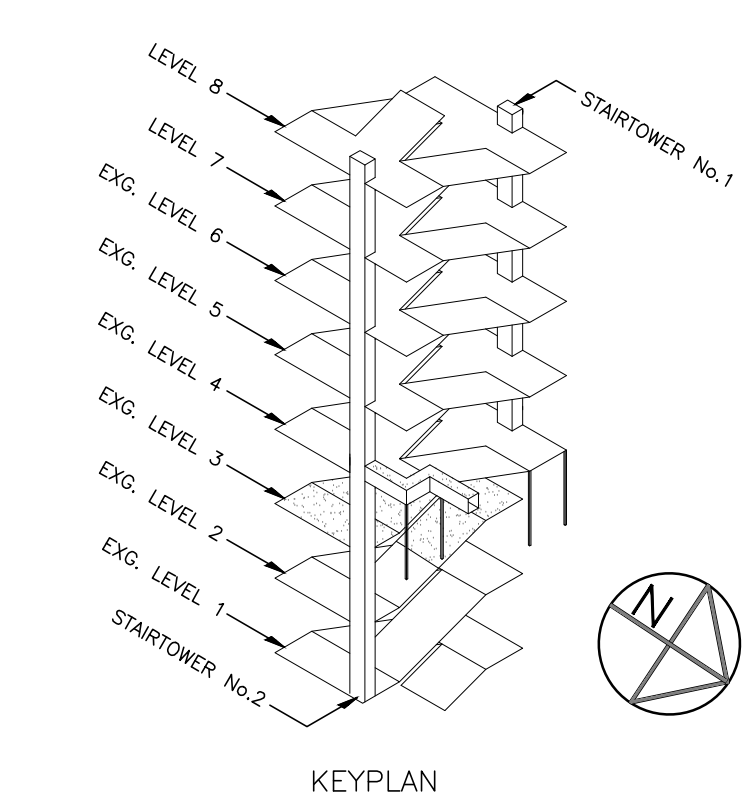
[illegible]



- NOTES:
1. SIZES SHOWN AND LOCATIONS OF DETERIORATIONS ARE APPROXIMATE.
 2. FOR REFERENCES, SEE GENERAL NOTES DRAWING G1002.
 3. CRACKS SMALLER THAN "4" SHALL BE PRESSURE INJECTED PER .
 4. CRACKS LARGER THAN "4" SHALL BE GROUTED AND SEALED PER .
 5. APPLY VEHICULAR TRAFFIC WATERPROOFING TO THE ENTIRE 3RD LEVEL.
 6. SPALLS SHALL BE REPAIRED PER DETAIL .


- LEGEND:**
- 50 S.F.
- 
- ① = APPROXIMATE AREA OF DELAMINATED CONCRETE SLAB OR BEAM SOFFIT
NUMBER IS APPROXIMATE SQUARE FOOT AREA.
NO NUMBER INDICATES ONE SQUARE FOOT OR LESS
- 1 S.F.
- 
- ② = CONCRETE SPALL
NUMBER IS APPROXIMATE SQUARE FOOT AREA.
NO NUMBER INDICATES ONE SQUARE FOOT OR LESS
- 6 FT.
- 
- ③ = CRACK IN CONCRETE
NUMBER IS APPROXIMATE LINEAR FOOT LENGTH.
- 6 FT.
- 
- ④ = CRACKED AND/OR DELAMINATED CONCRETE CURB
NUMBER IS APPROXIMATE LINEAR FOOT LENGTH.
- ← = ARROW INDICATES SIDE OF CONCRETE WALL, COLUMN, CURB, OR BEAM.

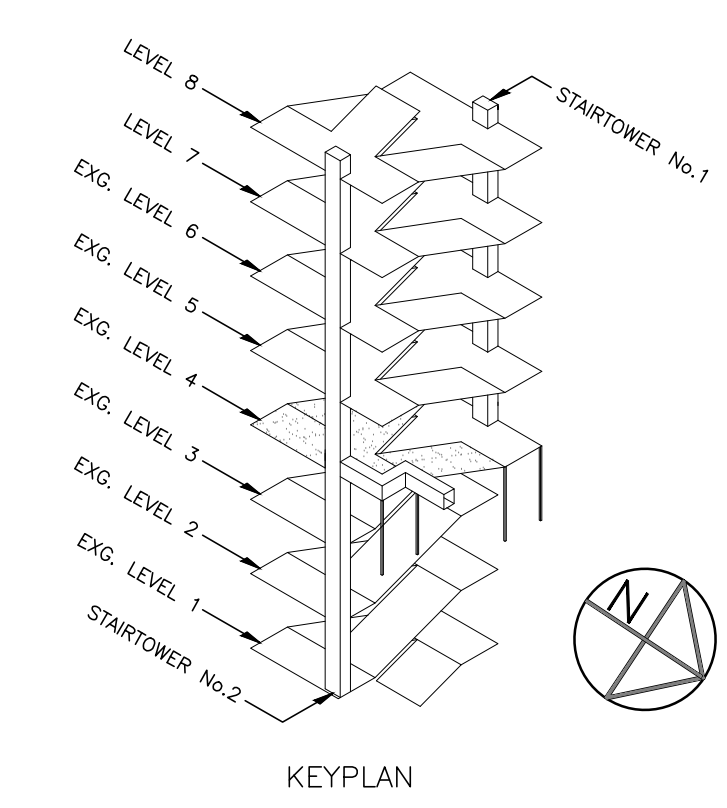
[illegible]

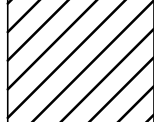





← = ARROW INDICATES SIDE OF CONCRETE WALL, COLUMN, CURB, OR BEAM.

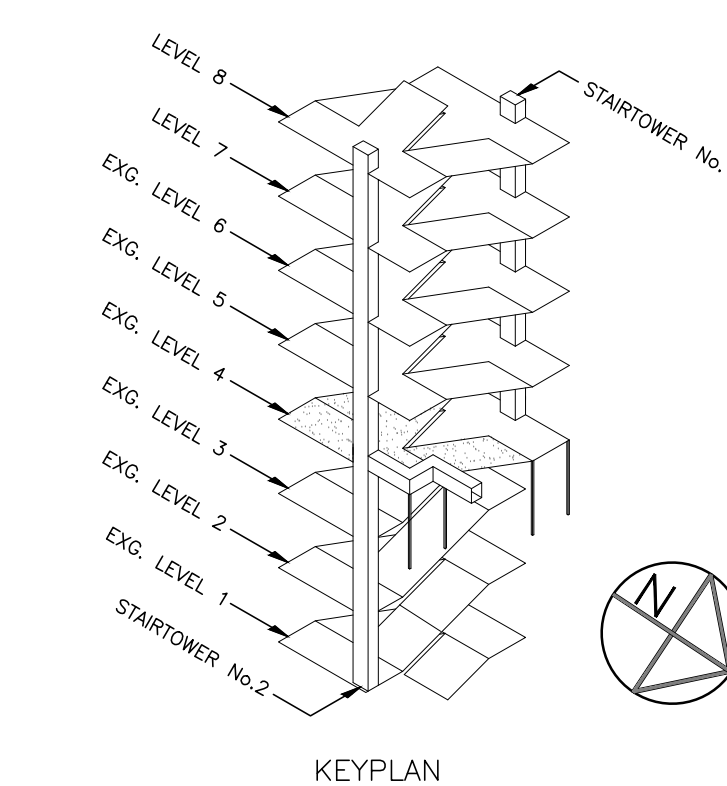
**Office of
Construction
and Facilities
Management**

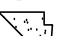
 Department of
Veterans Affairs





- LEGEND:**
- 50 S.F.
- 
- ① = APPROXIMATE AREA OF DELAMINATED CONCRETE SLAB OR BEAM SPLIT
NUMBER IS APPROXIMATE SQUARE FOOT AREA.
NO NUMBER INDICATES ONE SQUARE FOOT OR LESS
- 1 S.F.
- 
- ② = CONCRETE SPALL
NUMBER IS APPROXIMATE SQUARE FOOT AREA.
NO NUMBER INDICATES ONE SQUARE FOOT OR LESS
- 6 FT.
- 
- ③ = CRACK IN CONCRETE
NUMBER IS APPROXIMATE LINEAR FOOT LENGTH.
- 6 FT.
- 
- ④ = CRACKED AND/OR DELAMINATED CONCRETE CURB
NUMBER IS APPROXIMATE LINEAR FOOT LENGTH.
- ← = ARROW INDICATES SIDE OF CONCRETE WALL, COLUMN, CURB, OR BEAM.


[illegible]




1 S.F.  ② = CONCRETE SPALL
NUMBER IS APPROXIMATE SQUARE FOOT AREA.
NO NUMBER INDICATES ONE SQUARE FOOT OR LESS

6 FT.  ③ = CRACK IN CONCRETE
NUMBER IS APPROXIMATE LINEAR FOOT LENGTH.

6 FT.  ④ = CRACKED AND/OR DELAMINATED CONCRETE CURB
NUMBER IS APPROXIMATE LINEAR FOOT LENGTH.

 = ARROW INDICATES SIDE OF CONCRETE WALL, COLUMN,
CURB, OR BEAM.

Office of
Construction
and Facilities
Management

 Department of
Veterans Affairs