




PROJECT DIRECTORY	OWNER	ARCHITECT/ENGINEER
	VAN METER AND NEAL PICTURE SYSTEM 80 NORTH GREENE STREET BALTIMORE, MD 21201 • 1934 (410) 665-1925	AS WORKS, LTD. 6587 HAMILTON AVENUE PITTSBURGH, PA 15208 (412) 287-7333
	CONTACT WHITNEY BURGER	CONTACT BOB BURLITT

[illegible]

**FULLY SPRINKLERED
BID DOCUMENTS**

[illegible]

LEVEL P1 (Base Bid)

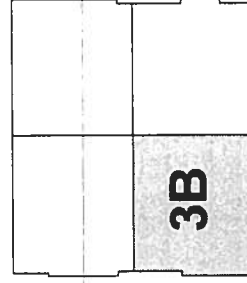
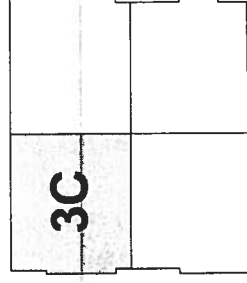
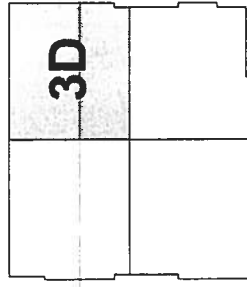
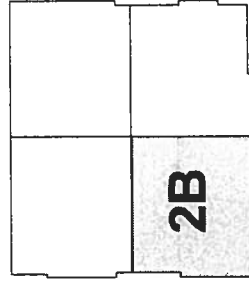
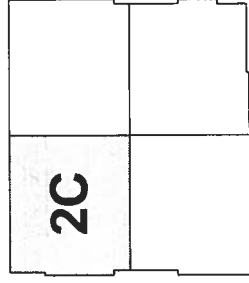
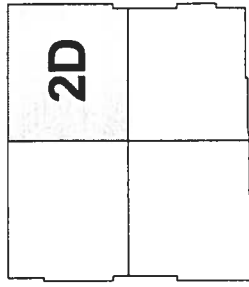
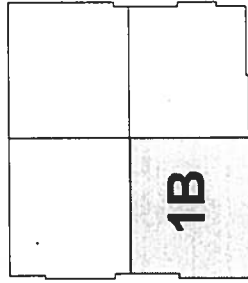
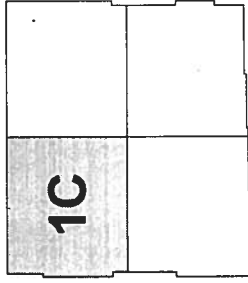
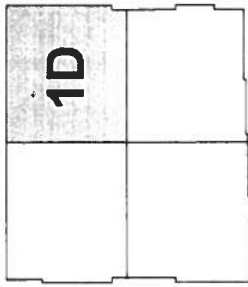
PHASE 1

LEVEL P2 (Bid Alternate 1)

PHASE 2

LEVEL P3 (Bid Alternate 2)

PHASE 3




PHASING NOTES:

1. THE GARAGE SHALL REMAIN OPERATIONAL THROUGHOUT THE PROJECT.
2. PHASING SHALL START WITH 1A AND END ON 3D
3. QUAD A & B - ALL WORK CAN BE DONE ON NORMAL WORKING HOURS. ALL EXISTING LIGHTING CAN BE REMOVED AND REPLACED.
4. QUAD C & D - ALL WORK SHALL BE AS FOLLOWS: THE DRIVE LANE FIXTURES SHALL BE REPLACED AND NEW LANE LIGHTING SHALL BE ORDERED PRIOR TO THE START OF WORK. THE DRIVE LANE LIGHTING SHALL BE ORDERED AS NEEDED TO ALLOW FOR TRAFFIC ACCESS TO RAMP. THIS WORK SHALL BE DONE OFF HOURS AND COORDINATED WITH COR.
5. THE CONTRACTOR SHALL PROVIDE ALL TRAFFIC CONTROL, FLAGMEN, SIGNAGE, FENCING, ETC. WHEN DOING WORK THAT INTERFERES WITH THE PUBLIC RIGHT-OF-WAY.
6. THE ENTRANCE RAMP SHALL BE INCLUDED IN PHASE 1D. COORDINATE WORK SO THAT THE RAMP IS CLEAR DURING REGULAR WORKING HOURS. THIS WORK SHALL BE DONE ON SECOND SHIFT AND BE SCHEDULED WITH COR.
7. THE ENTRANCE RAMP TO LEVEL P3 SHALL BE INCLUDED IN PHASE 2C. COORDINATE WORK SO THAT THE RAMP IS CLEAR DURING REGULAR WORKING HOURS. THIS WORK SHALL BE DONE ON SECOND SHIFT AND BE SCHEDULED WITH COR.



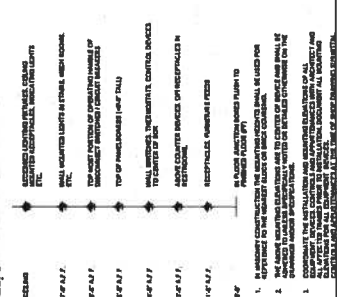
FULLY SPRINKLERED
BID DOCUMENTS

CONSULTANTS:		SEAL	ARCHITECTS/ENGINEERS:		
6527 Hamilton Avenue Baltimore, MD 21206 Tel: 410.327.7200 Fax: 410.327.7204 www.aeworks.com		A/E works			
Project Name: BALTIMORE VA MEDICAL CENTER PARKING GARAGE RE-LIGHTING		Project Number: 130-13-18		Office of Construction and Facilities Management Department of Veterans Affairs	
Location: 8100 Dunes Road Baltimore, MD 21201		Drawing Number: E00P		Date: January 26, 2014	
Approved Project Engineer: [Signature]		Checked: JAD		Date: JAD	

ELECTRICAL SYMBOLS LEGEND

①	GROUNDING SYMBOL	①	GROUNDING SYMBOL
②	GROUNDING SYMBOL	②	GROUNDING SYMBOL
③	GROUNDING SYMBOL	③	GROUNDING SYMBOL
④	GROUNDING SYMBOL	④	GROUNDING SYMBOL
⑤	GROUNDING SYMBOL	⑤	GROUNDING SYMBOL
⑥	GROUNDING SYMBOL	⑥	GROUNDING SYMBOL
⑦	GROUNDING SYMBOL	⑦	GROUNDING SYMBOL
⑧	GROUNDING SYMBOL	⑧	GROUNDING SYMBOL
⑨	GROUNDING SYMBOL	⑨	GROUNDING SYMBOL
⑩	GROUNDING SYMBOL	⑩	GROUNDING SYMBOL
⑪	GROUNDING SYMBOL	⑪	GROUNDING SYMBOL
⑫	GROUNDING SYMBOL	⑫	GROUNDING SYMBOL
⑬	GROUNDING SYMBOL	⑬	GROUNDING SYMBOL
⑭	GROUNDING SYMBOL	⑭	GROUNDING SYMBOL
⑮	GROUNDING SYMBOL	⑮	GROUNDING SYMBOL
⑯	GROUNDING SYMBOL	⑯	GROUNDING SYMBOL
⑰	GROUNDING SYMBOL	⑰	GROUNDING SYMBOL
⑱	GROUNDING SYMBOL	⑱	GROUNDING SYMBOL
⑲	GROUNDING SYMBOL	⑲	GROUNDING SYMBOL
⑳	GROUNDING SYMBOL	⑳	GROUNDING SYMBOL
㉑	GROUNDING SYMBOL	㉑	GROUNDING SYMBOL
㉒	GROUNDING SYMBOL	㉒	GROUNDING SYMBOL
㉓	GROUNDING SYMBOL	㉓	GROUNDING SYMBOL
㉔	GROUNDING SYMBOL	㉔	GROUNDING SYMBOL
㉕	GROUNDING SYMBOL	㉕	GROUNDING SYMBOL
㉖	GROUNDING SYMBOL	㉖	GROUNDING SYMBOL
㉗	GROUNDING SYMBOL	㉗	GROUNDING SYMBOL
㉘	GROUNDING SYMBOL	㉘	GROUNDING SYMBOL
㉙	GROUNDING SYMBOL	㉙	GROUNDING SYMBOL
㉚	GROUNDING SYMBOL	㉚	GROUNDING SYMBOL
㉛	GROUNDING SYMBOL	㉛	GROUNDING SYMBOL
㉜	GROUNDING SYMBOL	㉜	GROUNDING SYMBOL
㉝	GROUNDING SYMBOL	㉝	GROUNDING SYMBOL
㉞	GROUNDING SYMBOL	㉞	GROUNDING SYMBOL
㉟	GROUNDING SYMBOL	㉟	GROUNDING SYMBOL
㊱	GROUNDING SYMBOL	㊱	GROUNDING SYMBOL
㊲	GROUNDING SYMBOL	㊲	GROUNDING SYMBOL
㊳	GROUNDING SYMBOL	㊳	GROUNDING SYMBOL
㊴	GROUNDING SYMBOL	㊴	GROUNDING SYMBOL
㊵	GROUNDING SYMBOL	㊵	GROUNDING SYMBOL
㊶	GROUNDING SYMBOL	㊶	GROUNDING SYMBOL
㊷	GROUNDING SYMBOL	㊷	GROUNDING SYMBOL
㊸	GROUNDING SYMBOL	㊸	GROUNDING SYMBOL
㊹	GROUNDING SYMBOL	㊹	GROUNDING SYMBOL
㊺	GROUNDING SYMBOL	㊺	GROUNDING SYMBOL
㊻	GROUNDING SYMBOL	㊻	GROUNDING SYMBOL
㊼	GROUNDING SYMBOL	㊼	GROUNDING SYMBOL
㊽	GROUNDING SYMBOL	㊽	GROUNDING SYMBOL
㊾	GROUNDING SYMBOL	㊾	GROUNDING SYMBOL
㊿	GROUNDING SYMBOL	㊿	GROUNDING SYMBOL

STANDARD MOUNTING HEIGHTS



LIGHTING FIXTURE SCHEDULE

ITEM	DESCRIPTION	QUANTITY	UNIT	PRICE	TOTAL
1	RECESSED DOWNLIGHT	100	EA	1.50	150.00
2	RECESSED DOWNLIGHT	100	EA	1.50	150.00
3	RECESSED DOWNLIGHT	100	EA	1.50	150.00
4	RECESSED DOWNLIGHT	100	EA	1.50	150.00
5	RECESSED DOWNLIGHT	100	EA	1.50	150.00
6	RECESSED DOWNLIGHT	100	EA	1.50	150.00
7	RECESSED DOWNLIGHT	100	EA	1.50	150.00
8	RECESSED DOWNLIGHT	100	EA	1.50	150.00
9	RECESSED DOWNLIGHT	100	EA	1.50	150.00
10	RECESSED DOWNLIGHT	100	EA	1.50	150.00

GENERAL ELECTRICAL INSTALLATION NOTES

1. THE FOLLOWING GENERAL NOTES APPLY TO ALL ELECTRICAL INSTALLATIONS.
2. ALL ELECTRICAL WORK SHALL BE IN ACCORDANCE WITH THE NATIONAL ELECTRICAL CODE (NEC) AND THE NATIONAL FIRE PROTECTION ASSOCIATION (NFPA) CODES.
3. ALL ELECTRICAL WORK SHALL BE DONE BY A LICENSED ELECTRICIAN.
4. ALL ELECTRICAL WORK SHALL BE DONE IN ACCORDANCE WITH THE PROJECT SPECIFICATIONS.
5. ALL ELECTRICAL WORK SHALL BE DONE IN ACCORDANCE WITH THE PROJECT SCHEDULE.
6. ALL ELECTRICAL WORK SHALL BE DONE IN ACCORDANCE WITH THE PROJECT BUDGET.
7. ALL ELECTRICAL WORK SHALL BE DONE IN ACCORDANCE WITH THE PROJECT QUALITY.
8. ALL ELECTRICAL WORK SHALL BE DONE IN ACCORDANCE WITH THE PROJECT SAFETY.
9. ALL ELECTRICAL WORK SHALL BE DONE IN ACCORDANCE WITH THE PROJECT ENVIRONMENT.
10. ALL ELECTRICAL WORK SHALL BE DONE IN ACCORDANCE WITH THE PROJECT COMMUNITY.

GENERAL SYMBOLS LEGEND

①	GROUNDING SYMBOL	①	GROUNDING SYMBOL
②	GROUNDING SYMBOL	②	GROUNDING SYMBOL
③	GROUNDING SYMBOL	③	GROUNDING SYMBOL
④	GROUNDING SYMBOL	④	GROUNDING SYMBOL
⑤	GROUNDING SYMBOL	⑤	GROUNDING SYMBOL
⑥	GROUNDING SYMBOL	⑥	GROUNDING SYMBOL
⑦	GROUNDING SYMBOL	⑦	GROUNDING SYMBOL
⑧	GROUNDING SYMBOL	⑧	GROUNDING SYMBOL
⑨	GROUNDING SYMBOL	⑨	GROUNDING SYMBOL
⑩	GROUNDING SYMBOL	⑩	GROUNDING SYMBOL
⑪	GROUNDING SYMBOL	⑪	GROUNDING SYMBOL
⑫	GROUNDING SYMBOL	⑫	GROUNDING SYMBOL
⑬	GROUNDING SYMBOL	⑬	GROUNDING SYMBOL
⑭	GROUNDING SYMBOL	⑭	GROUNDING SYMBOL
⑮	GROUNDING SYMBOL	⑮	GROUNDING SYMBOL
⑯	GROUNDING SYMBOL	⑯	GROUNDING SYMBOL
⑰	GROUNDING SYMBOL	⑰	GROUNDING SYMBOL
⑱	GROUNDING SYMBOL	⑱	GROUNDING SYMBOL
⑲	GROUNDING SYMBOL	⑲	GROUNDING SYMBOL
⑳	GROUNDING SYMBOL	⑳	GROUNDING SYMBOL
㉑	GROUNDING SYMBOL	㉑	GROUNDING SYMBOL
㉒	GROUNDING SYMBOL	㉒	GROUNDING SYMBOL
㉓	GROUNDING SYMBOL	㉓	GROUNDING SYMBOL
㉔	GROUNDING SYMBOL	㉔	GROUNDING SYMBOL
㉕	GROUNDING SYMBOL	㉕	GROUNDING SYMBOL
㉖	GROUNDING SYMBOL	㉖	GROUNDING SYMBOL
㉗	GROUNDING SYMBOL	㉗	GROUNDING SYMBOL
㉘	GROUNDING SYMBOL	㉘	GROUNDING SYMBOL
㉙	GROUNDING SYMBOL	㉙	GROUNDING SYMBOL
㉚	GROUNDING SYMBOL	㉚	GROUNDING SYMBOL
㉛	GROUNDING SYMBOL	㉛	GROUNDING SYMBOL
㉜	GROUNDING SYMBOL	㉜	GROUNDING SYMBOL
㉝	GROUNDING SYMBOL	㉝	GROUNDING SYMBOL
㉞	GROUNDING SYMBOL	㉞	GROUNDING SYMBOL
㉟	GROUNDING SYMBOL	㉟	GROUNDING SYMBOL
㊱	GROUNDING SYMBOL	㊱	GROUNDING SYMBOL
㊲	GROUNDING SYMBOL	㊲	GROUNDING SYMBOL
㊳	GROUNDING SYMBOL	㊳	GROUNDING SYMBOL
㊴	GROUNDING SYMBOL	㊴	GROUNDING SYMBOL
㊵	GROUNDING SYMBOL	㊵	GROUNDING SYMBOL
㊶	GROUNDING SYMBOL	㊶	GROUNDING SYMBOL
㊷	GROUNDING SYMBOL	㊷	GROUNDING SYMBOL
㊸	GROUNDING SYMBOL	㊸	GROUNDING SYMBOL
㊹	GROUNDING SYMBOL	㊹	GROUNDING SYMBOL
㊺	GROUNDING SYMBOL	㊺	GROUNDING SYMBOL
㊻	GROUNDING SYMBOL	㊻	GROUNDING SYMBOL
㊼	GROUNDING SYMBOL	㊼	GROUNDING SYMBOL
㊽	GROUNDING SYMBOL	㊽	GROUNDING SYMBOL
㊾	GROUNDING SYMBOL	㊾	GROUNDING SYMBOL
㊿	GROUNDING SYMBOL	㊿	GROUNDING SYMBOL

NOTE: THIS PROJECT CONTAINS WORK THAT OCCURS IN AN ACTIVE PARKING GARAGE. THE ELECTRICAL CONTRACTOR SHALL COORDINATE ALL PHASING AND INSTALLATION SCHEDULE WITH THE G.O.R. PRIOR TO STARTING WORK. THE PARKING GARAGE SHALL REMAIN FULLY OPERATIONAL FOR THE DURATION OF THE PROJECT.

ABBREVIATIONS

ABBREVIATION	DESCRIPTION	ABBREVIATION	DESCRIPTION
AC	ALTERNATING CURRENT	DC	DIRECT CURRENT
AD	ADDITIONAL	ADJ	ADJUSTABLE
AE	ALTERNATIVE	AF	AFTER
AG	AGENCY	AGG	AGGREGATE
AH	AIR HANDLING	AIR	AIR
AI	AIR INLET	AIR	AIR
AL	ALUMINUM	AL	ALUMINUM
AM	AMPERES	AMP	AMPERES
AN	ANALOG	AN	ANALOG
AO	AIR OUTLET	AO	AIR OUTLET
AP	APPROXIMATE	AP	APPROXIMATE
AR	ARCHITECT	AR	ARCHITECT
AS	ASBESTOS	AS	ASBESTOS
AT	ATMOSPHERE	AT	ATMOSPHERE
AV	AUDIO VISUAL	AV	AUDIO VISUAL
AW	AIR WASH	AW	AIR WASH
AX	AXIS	AX	AXIS
AY	AIR YARD	AY	AIR YARD
AZ	AIR ZONE	AZ	AIR ZONE
BA	BATH	BA	BATH
BB	BED	BB	BED
BC	BEDROOM	BC	BEDROOM
BD	BEDROOM	BD	BEDROOM
BE	BEDROOM	BE	BEDROOM
BF	BEDROOM	BF	BEDROOM
BG	BEDROOM	BG	BEDROOM
BH	BEDROOM	BH	BEDROOM
BI	BEDROOM	BI	BEDROOM
BJ	BEDROOM	BJ	BEDROOM
BK	BEDROOM	BK	BEDROOM
BL	BEDROOM	BL	BEDROOM
BM	BEDROOM	BM	BEDROOM
BN	BEDROOM	BN	BEDROOM
BO	BEDROOM	BO	BEDROOM
BP	BEDROOM	BP	BEDROOM
BQ	BEDROOM	BQ	BEDROOM
BR	BEDROOM	BR	BEDROOM
BS	BEDROOM	BS	BEDROOM
BT	BEDROOM	BT	BEDROOM
BU	BEDROOM	BU	BEDROOM
BV	BEDROOM	BV	BEDROOM
BW	BEDROOM	BW	BEDROOM
BX	BEDROOM	BX	BEDROOM
BY	BEDROOM	BY	BEDROOM
BZ	BEDROOM	BZ	BEDROOM
CA	CALIFORNIA	CA	CALIFORNIA
CB	CALIFORNIA	CB	CALIFORNIA
CC	CALIFORNIA	CC	CALIFORNIA
CD	CALIFORNIA	CD	CALIFORNIA
CE	CALIFORNIA	CE	CALIFORNIA
CF	CALIFORNIA	CF	CALIFORNIA
CG	CALIFORNIA	CG	CALIFORNIA
CH	CALIFORNIA	CH	CALIFORNIA
CI	CALIFORNIA	CI	CALIFORNIA
CJ	CALIFORNIA	CJ	CALIFORNIA
CK	CALIFORNIA	CK	CALIFORNIA
CL	CALIFORNIA	CL	CALIFORNIA
CM	CALIFORNIA	CM	CALIFORNIA
CN	CALIFORNIA	CN	CALIFORNIA
CO	CALIFORNIA	CO	CALIFORNIA
CP	CALIFORNIA	CP	CALIFORNIA
CQ	CALIFORNIA	CQ	CALIFORNIA
CR	CALIFORNIA	CR	CALIFORNIA
CS	CALIFORNIA	CS	CALIFORNIA
CT	CALIFORNIA	CT	CALIFORNIA
CU	CALIFORNIA	CU	CALIFORNIA
CV	CALIFORNIA	CV	CALIFORNIA
CW	CALIFORNIA	CW	CALIFORNIA
CX	CALIFORNIA	CX	CALIFORNIA
CY	CALIFORNIA	CY	CALIFORNIA
CZ	CALIFORNIA	CZ	CALIFORNIA
DA	DALLAS	DA	DALLAS
DB	DALLAS	DB	DALLAS
DC	DALLAS	DC	DALLAS
DD	DALLAS	DD	DALLAS
DE	DALLAS	DE	DALLAS
DF	DALLAS	DF	DALLAS
DG	DALLAS	DG	DALLAS
DH	DALLAS	DH	DALLAS
DI	DALLAS	DI	DALLAS
DJ	DALLAS	DJ	DALLAS
DK	DALLAS	DK	DALLAS
DL	DALLAS	DL	DALLAS
DM	DALLAS	DM	DALLAS
DN	DALLAS	DN	DALLAS
DO	DALLAS	DO	DALLAS
DP	DALLAS	DP	DALLAS
DQ	DALLAS	DQ	DALLAS
DR	DALLAS	DR	DALLAS
DS	DALLAS	DS	DALLAS
DT	DALLAS	DT	DALLAS
DU	DALLAS	DU	DALLAS
DV	DALLAS	DV	DALLAS
DW	DALLAS	DW	DALLAS
DX	DALLAS	DX	DALLAS
DY	DALLAS	DY	DALLAS
DZ	DALLAS	DZ	DALLAS

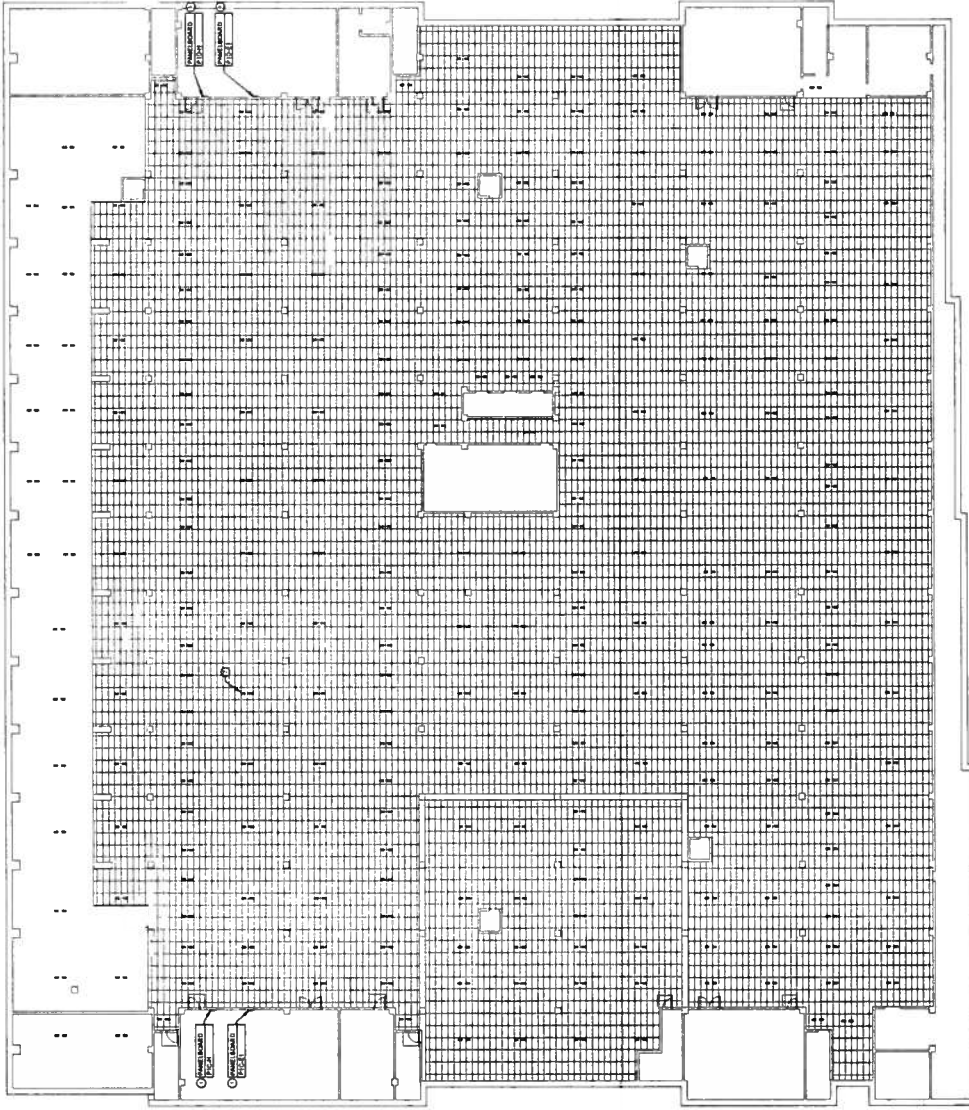
ELECTRICAL DEMOLITION ABBREVIATIONS

ABBREVIATION	DESCRIPTION	ABBREVIATION	DESCRIPTION
AD	ADDITIONAL	ADJ	ADJUSTABLE
AE	ALTERNATIVE	AF	AFTER
AG	AGENCY	AGG	AGGREGATE
AH	AIR HANDLING	AIR	AIR
AI	AIR INLET	AIR	AIR
AL	ALUMINUM	AL	ALUMINUM
AM	AMPERES	AMP	AMPERES
AN	ANALOG	AN	ANALOG
AO	AIR OUTLET	AO	AIR OUTLET
AP	APPROXIMATE	AP	APPROXIMATE
AR	ARCHITECT	AR	ARCHITECT
AS	ASBESTOS	AS	ASBESTOS
AT	ATMOSPHERE	AT	ATMOSPHERE
AV	AUDIO VISUAL	AV	AUDIO VISUAL
AW	AIR WASH	AW	AIR WASH
AX	AXIS	AX	AXIS
AY	AIR YARD	AY	AIR YARD
AZ	AIR ZONE	AZ	AIR ZONE
BA	BATH	BA	BATH
BB	BED	BB	BED
BC	BEDROOM	BC	BEDROOM
BD	BEDROOM	BD	BEDROOM
BE	BEDROOM	BE	BEDROOM
BF	BEDROOM	BF	BEDROOM
BG	BEDROOM	BG	BEDROOM
BH	BEDROOM	BH	BEDROOM
BI	BEDROOM	BI	BEDROOM
BJ	BEDROOM	BJ	BEDROOM
BK	BEDROOM	BK	BEDROOM
BL	BEDROOM	BL	BEDROOM
BM	BEDROOM	BM	BEDROOM
BN	BEDROOM	BN	BEDROOM
BO	BEDROOM	BO	BEDROOM
BP	BEDROOM	BP	BEDROOM
BQ	BEDROOM	BQ	BEDROOM
BR	BEDROOM	BR	BEDROOM
BS	BEDROOM	BS	BEDROOM
BT	BEDROOM	BT	BEDROOM
BU	BEDROOM	BU	BEDROOM
BV	BEDROOM	BV	BEDROOM
BW	BEDROOM	BW	BEDROOM
BX	BEDROOM	BX	BEDROOM
BY	BEDROOM	BY	BEDROOM
BZ	BEDROOM	BZ	BEDROOM
CA	CALIFORNIA	CA	CALIFORNIA
CB	CALIFORNIA	CB	CALIFORNIA
CC	CALIFORNIA	CC	CALIFORNIA
CD	CALIFORNIA	CD	CALIFORNIA
CE	CALIFORNIA	CE	CALIFORNIA
CF	CALIFORNIA	CF	CALIFORNIA
CG	CALIFORNIA	CG	CALIFORNIA
CH	CALIFORNIA	CH	CALIFORNIA
CI	CALIFORNIA	CI	CALIFORNIA
CJ	CALIFORNIA	CJ	CALIFORNIA
CK	CALIFORNIA	CK	CALIFORNIA
CL	CALIFORNIA	CL	CALIFORNIA
CM	CALIFORNIA	CM	CALIFORNIA
CN	CALIFORNIA	CN	CALIFORNIA
CO	CALIFORNIA	CO	CALIFORNIA
CP	CALIFORNIA	CP	CALIFORNIA
CQ	CALIFORNIA	CQ	CALIFORNIA
CR	CALIFORNIA	CR	CALIFORNIA
CS	CALIFORNIA	CS	CALIFORNIA
CT	CALIFORNIA	CT	CALIFORNIA
CU	CALIFORNIA	CU	CALIFORNIA
CV	CALIFORNIA	CV	CALIFORNIA
CW	CALIFORNIA	CW	CALIFORNIA
CX	CALIFORNIA	CX	CALIFORNIA
CY	CALIFORNIA	CY	CALIFORNIA
CZ	CALIFORNIA	CZ	CALIFORNIA
DA	DALLAS	DA	DALLAS
DB	DALLAS	DB	DALLAS
DC	DALLAS	DC	DALLAS
DD	DALLAS	DD	DALLAS
DE	DALLAS	DE	DALLAS
DF	DALLAS	DF	DALLAS
DG	DALLAS	DG	DALLAS
DH	DALLAS	DH	DALLAS
DI	DALLAS	DI	DALLAS
DJ	DALLAS	DJ	DALLAS
DK	DALLAS	DK	DALLAS
DL	DALLAS	DL	DALLAS
DM	DALLAS	DM	DALLAS
DN	DALLAS	DN	DALLAS
DO	DALLAS	DO	DALLAS
DP	DALLAS	DP	DALLAS
DQ	DALLAS	DQ	DALLAS
DR	DALLAS	DR	DALLAS
DS	DALLAS	DS	DALLAS
DT	DALLAS	DT	DALLAS
DU	DALLAS	DU	DALLAS
DV	DALLAS	DV	DALLAS
DW	DALLAS	DW	DALLAS
DX	DALLAS	DX	DALLAS
DY	DALLAS	DY	DALLAS
DZ	DALLAS	DZ	DALLAS

GENERAL ELECTRICAL DEMOLITION ABBREVIATIONS

ABBREVIATION

- ELECTRICAL DEMOLITION NOTES**
1. DEMOLITION SHALL BE IN ACCORDANCE WITH THE CITY OF BALTIMORE'S DEMOLITION REGULATIONS AND THE NATIONAL ELECTRICAL DEMOLITION ASSOCIATION (NEDA) STANDARDS.
 2. ALL ELECTRICAL MATERIALS SHALL BE REMOVED AND DISPOSED OF IN ACCORDANCE WITH THE CITY OF BALTIMORE'S DEMOLITION REGULATIONS AND THE NATIONAL ELECTRICAL DEMOLITION ASSOCIATION (NEDA) STANDARDS.
 3. ALL ELECTRICAL MATERIALS SHALL BE REMOVED AND DISPOSED OF IN ACCORDANCE WITH THE CITY OF BALTIMORE'S DEMOLITION REGULATIONS AND THE NATIONAL ELECTRICAL DEMOLITION ASSOCIATION (NEDA) STANDARDS.
 4. ALL ELECTRICAL MATERIALS SHALL BE REMOVED AND DISPOSED OF IN ACCORDANCE WITH THE CITY OF BALTIMORE'S DEMOLITION REGULATIONS AND THE NATIONAL ELECTRICAL DEMOLITION ASSOCIATION (NEDA) STANDARDS.
 5. ALL ELECTRICAL MATERIALS SHALL BE REMOVED AND DISPOSED OF IN ACCORDANCE WITH THE CITY OF BALTIMORE'S DEMOLITION REGULATIONS AND THE NATIONAL ELECTRICAL DEMOLITION ASSOCIATION (NEDA) STANDARDS.
 6. ALL ELECTRICAL MATERIALS SHALL BE REMOVED AND DISPOSED OF IN ACCORDANCE WITH THE CITY OF BALTIMORE'S DEMOLITION REGULATIONS AND THE NATIONAL ELECTRICAL DEMOLITION ASSOCIATION (NEDA) STANDARDS.
 7. ALL ELECTRICAL MATERIALS SHALL BE REMOVED AND DISPOSED OF IN ACCORDANCE WITH THE CITY OF BALTIMORE'S DEMOLITION REGULATIONS AND THE NATIONAL ELECTRICAL DEMOLITION ASSOCIATION (NEDA) STANDARDS.
 8. ALL ELECTRICAL MATERIALS SHALL BE REMOVED AND DISPOSED OF IN ACCORDANCE WITH THE CITY OF BALTIMORE'S DEMOLITION REGULATIONS AND THE NATIONAL ELECTRICAL DEMOLITION ASSOCIATION (NEDA) STANDARDS.
 9. ALL ELECTRICAL MATERIALS SHALL BE REMOVED AND DISPOSED OF IN ACCORDANCE WITH THE CITY OF BALTIMORE'S DEMOLITION REGULATIONS AND THE NATIONAL ELECTRICAL DEMOLITION ASSOCIATION (NEDA) STANDARDS.
 10. ALL ELECTRICAL MATERIALS SHALL BE REMOVED AND DISPOSED OF IN ACCORDANCE WITH THE CITY OF BALTIMORE'S DEMOLITION REGULATIONS AND THE NATIONAL ELECTRICAL DEMOLITION ASSOCIATION (NEDA) STANDARDS.
- ELECTRICAL DEMOLITION NOTES**
1. DEMOLITION SHALL BE IN ACCORDANCE WITH THE CITY OF BALTIMORE'S DEMOLITION REGULATIONS AND THE NATIONAL ELECTRICAL DEMOLITION ASSOCIATION (NEDA) STANDARDS.
 2. ALL ELECTRICAL MATERIALS SHALL BE REMOVED AND DISPOSED OF IN ACCORDANCE WITH THE CITY OF BALTIMORE'S DEMOLITION REGULATIONS AND THE NATIONAL ELECTRICAL DEMOLITION ASSOCIATION (NEDA) STANDARDS.
 3. ALL ELECTRICAL MATERIALS SHALL BE REMOVED AND DISPOSED OF IN ACCORDANCE WITH THE CITY OF BALTIMORE'S DEMOLITION REGULATIONS AND THE NATIONAL ELECTRICAL DEMOLITION ASSOCIATION (NEDA) STANDARDS.
 4. ALL ELECTRICAL MATERIALS SHALL BE REMOVED AND DISPOSED OF IN ACCORDANCE WITH THE CITY OF BALTIMORE'S DEMOLITION REGULATIONS AND THE NATIONAL ELECTRICAL DEMOLITION ASSOCIATION (NEDA) STANDARDS.
 5. ALL ELECTRICAL MATERIALS SHALL BE REMOVED AND DISPOSED OF IN ACCORDANCE WITH THE CITY OF BALTIMORE'S DEMOLITION REGULATIONS AND THE NATIONAL ELECTRICAL DEMOLITION ASSOCIATION (NEDA) STANDARDS.
 6. ALL ELECTRICAL MATERIALS SHALL BE REMOVED AND DISPOSED OF IN ACCORDANCE WITH THE CITY OF BALTIMORE'S DEMOLITION REGULATIONS AND THE NATIONAL ELECTRICAL DEMOLITION ASSOCIATION (NEDA) STANDARDS.
 7. ALL ELECTRICAL MATERIALS SHALL BE REMOVED AND DISPOSED OF IN ACCORDANCE WITH THE CITY OF BALTIMORE'S DEMOLITION REGULATIONS AND THE NATIONAL ELECTRICAL DEMOLITION ASSOCIATION (NEDA) STANDARDS.
 8. ALL ELECTRICAL MATERIALS SHALL BE REMOVED AND DISPOSED OF IN ACCORDANCE WITH THE CITY OF BALTIMORE'S DEMOLITION REGULATIONS AND THE NATIONAL ELECTRICAL DEMOLITION ASSOCIATION (NEDA) STANDARDS.
 9. ALL ELECTRICAL MATERIALS SHALL BE REMOVED AND DISPOSED OF IN ACCORDANCE WITH THE CITY OF BALTIMORE'S DEMOLITION REGULATIONS AND THE NATIONAL ELECTRICAL DEMOLITION ASSOCIATION (NEDA) STANDARDS.
 10. ALL ELECTRICAL MATERIALS SHALL BE REMOVED AND DISPOSED OF IN ACCORDANCE WITH THE CITY OF BALTIMORE'S DEMOLITION REGULATIONS AND THE NATIONAL ELECTRICAL DEMOLITION ASSOCIATION (NEDA) STANDARDS.



1 ELECTRICAL DEMOLITION PLAN - LEVEL P1
SHEET 1 OF 1

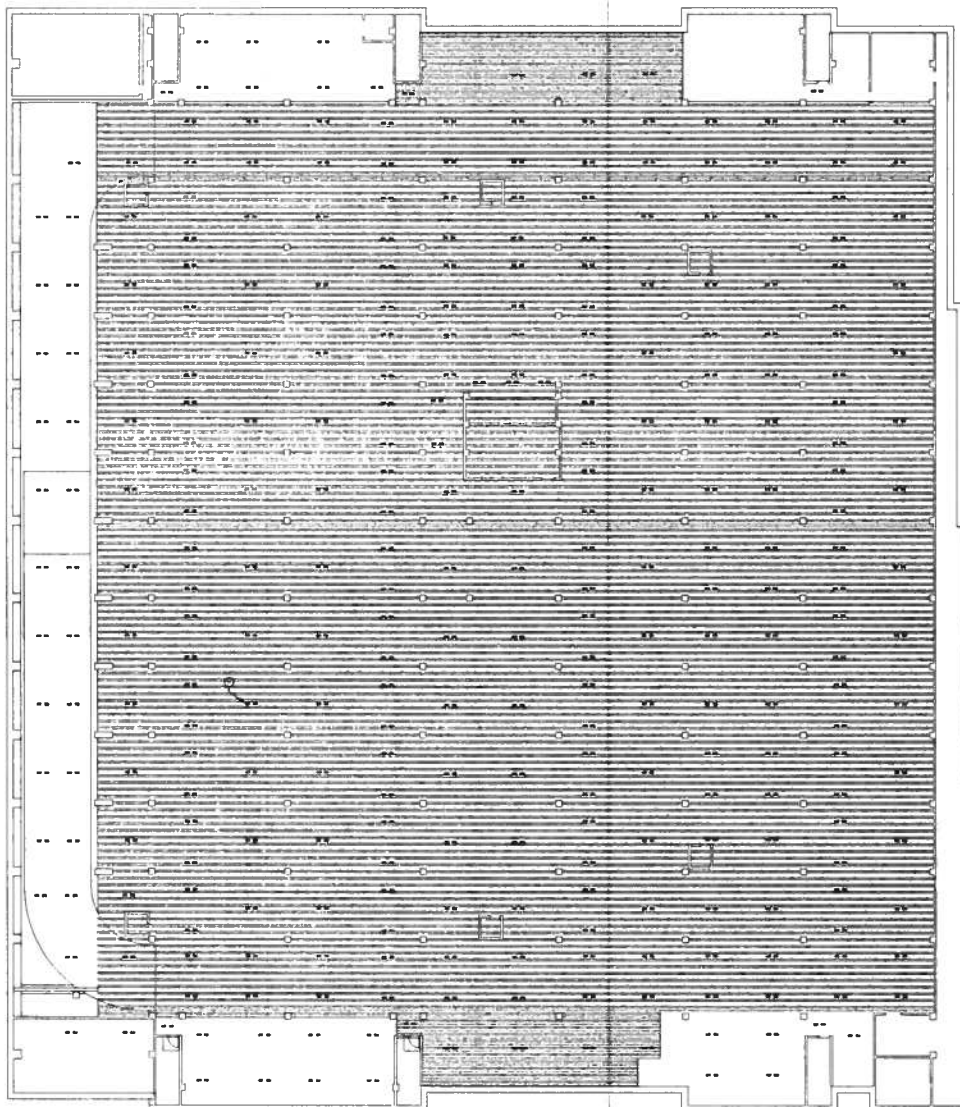
FULLY SPRINKLERED
BID DOCUMENTS



CONSULTANTS:		SEAL		ARCHITECTS/ENGINEERS:		Office of Construction and Facilities Management	
						Project Title: BALTIMORE VA MEDICAL CENTER PARKING GARAGE RE-LIGHTING Building Number: 510-13-10 Drawing Number: EDP1 Date: January 24, 2014 Drawn by: JAC	
Project Title: BALTIMORE VA MEDICAL CENTER PARKING GARAGE RE-LIGHTING Building Number: 510-13-10 Drawing Number: EDP1 Date: January 24, 2014 Drawn by: JAC		Project Title: BALTIMORE VA MEDICAL CENTER PARKING GARAGE RE-LIGHTING Building Number: 510-13-10 Drawing Number: EDP1 Date: January 24, 2014 Drawn by: JAC		Project Title: BALTIMORE VA MEDICAL CENTER PARKING GARAGE RE-LIGHTING Building Number: 510-13-10 Drawing Number: EDP1 Date: January 24, 2014 Drawn by: JAC		Project Title: BALTIMORE VA MEDICAL CENTER PARKING GARAGE RE-LIGHTING Building Number: 510-13-10 Drawing Number: EDP1 Date: January 24, 2014 Drawn by: JAC	

1007 American Avenue
P.O. Box 11200
Baltimore, MD 21211
Tel: 410.387.7200 Fax: 410.387.7204
www.aeworks.com
A/E Works Project Number: 1218

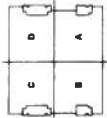
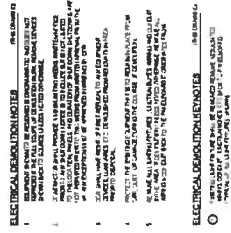
A/E works



D	A
C	B

SELECTIONS FROM THE DEMOLITION REPERTOIRE

**FULLY SPRINKLERED
BID DOCUMENTS**



1 ELECTRICAL DEMOLITION PLAN - LEVEL P3
1/8" = 1'-0"

**FULLY SPRINKLERED
BID DOCUMENTS**

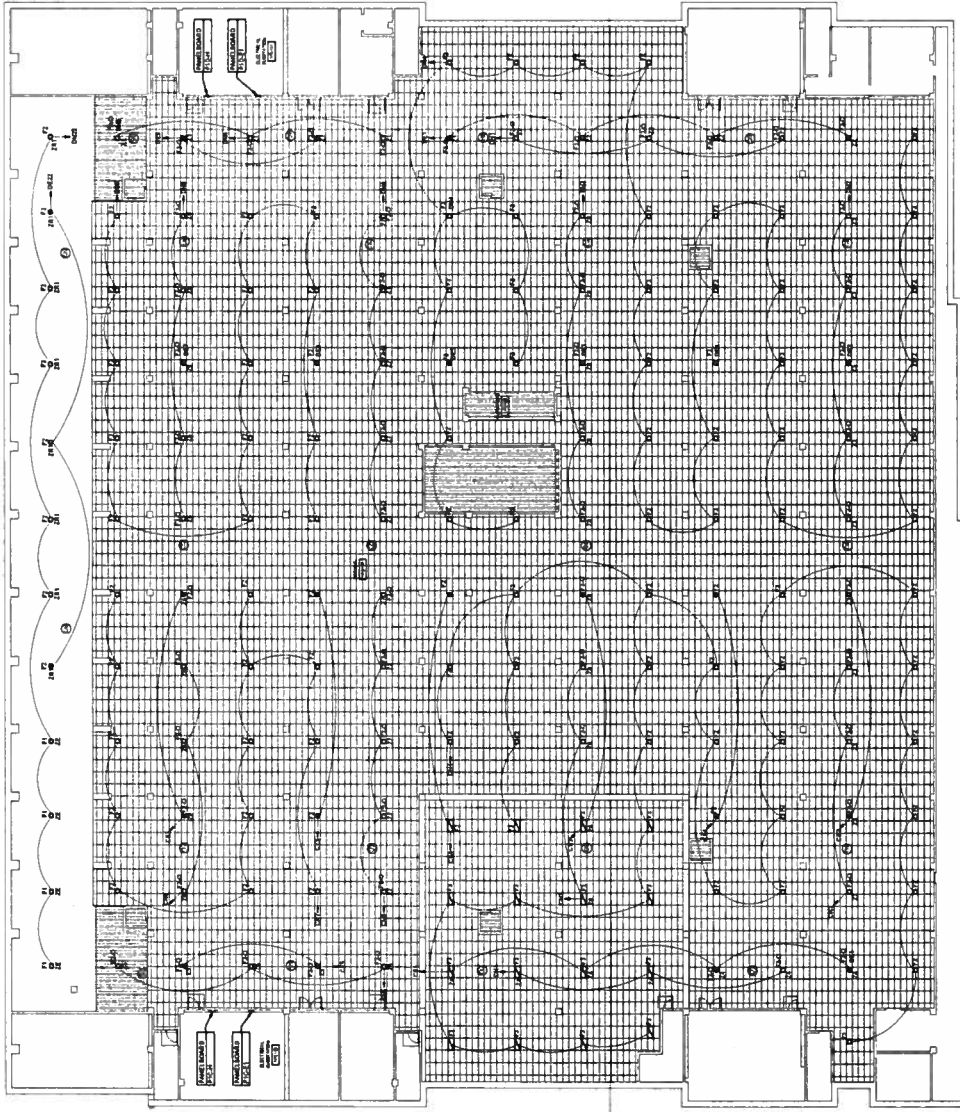
[illegible]

LIGHTING GENERAL NOTES

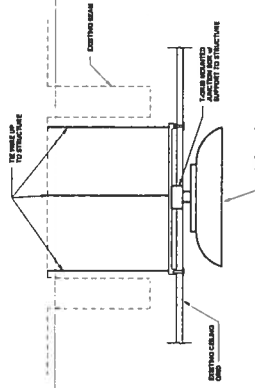
1. SEE GENERAL NOTES FOR ALL LIGHTING SYMBOLS AND REQUIREMENTS.
2. ALL LIGHTING FIXTURES SHALL BE INSTALLED IN ACCORDANCE WITH THE IBC AND NFPA 70.
3. ALL LIGHTING FIXTURES SHALL BE INSTALLED IN ACCORDANCE WITH THE IBC AND NFPA 70.
4. ALL LIGHTING FIXTURES SHALL BE INSTALLED IN ACCORDANCE WITH THE IBC AND NFPA 70.

ELECTRICAL GENERAL NOTES

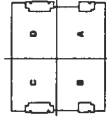
1. SEE GENERAL NOTES FOR ALL ELECTRICAL SYMBOLS AND REQUIREMENTS.
2. ALL ELECTRICAL WORK SHALL BE INSTALLED IN ACCORDANCE WITH THE IBC AND NFPA 70.
3. ALL ELECTRICAL WORK SHALL BE INSTALLED IN ACCORDANCE WITH THE IBC AND NFPA 70.
4. ALL ELECTRICAL WORK SHALL BE INSTALLED IN ACCORDANCE WITH THE IBC AND NFPA 70.



1 LIGHTING PLAN - LEVEL P1
1/8" = 1'-0"



2 LIGHT FIXTURE MOUNTING DETAIL
1/4" = 1'-0"



**FULLY SPRINKLERED
BID DOCUMENTS**

CONSULTANTS: [Blank space for consultant information]		SEAL 		ARCHITECTS/ENGINEERS: A/E works 6007 Hamilton Avenue Baltimore, MD 21206 Tel: 410.527.7200 Fax: 410.527.7204 www.aeworks.com A/E Member Project Number: 1318		Project Title: LIGHTING PLAN - LEVEL P1		Project Number: 1318		Office of Construction and Facilities Management Department of Transportation	
Building Name: BALTIMORE VA MEDICAL CENTER PARKING GARAGE RELIGHTING		Location: 6007 Hamilton Avenue Baltimore, MD 21206		Contract Number: ELP1		Design: 1318		Project Manager: [Blank space]		Project Engineer: [Blank space]	
Approved Project Director: [Blank space]		Checked: [Blank space]		Drawn: [Blank space]		Date: January 24, 2014		Scale: AS		Sheet: 1318	

LIGHTING GENERAL NOTES

1. ALL LIGHTING SHALL BE IN ACCORDANCE WITH THE LATEST EDITIONS OF THE ILLUMINATING ENGINEERING SOCIETY (IES) HANDBOOK AND THE IES LUMINAIRE PHOTO METERING GUIDE.

2. ALL LIGHTING SHALL BE IN ACCORDANCE WITH THE LATEST EDITIONS OF THE ILLUMINATING ENGINEERING SOCIETY (IES) HANDBOOK AND THE IES LUMINAIRE PHOTO METERING GUIDE.

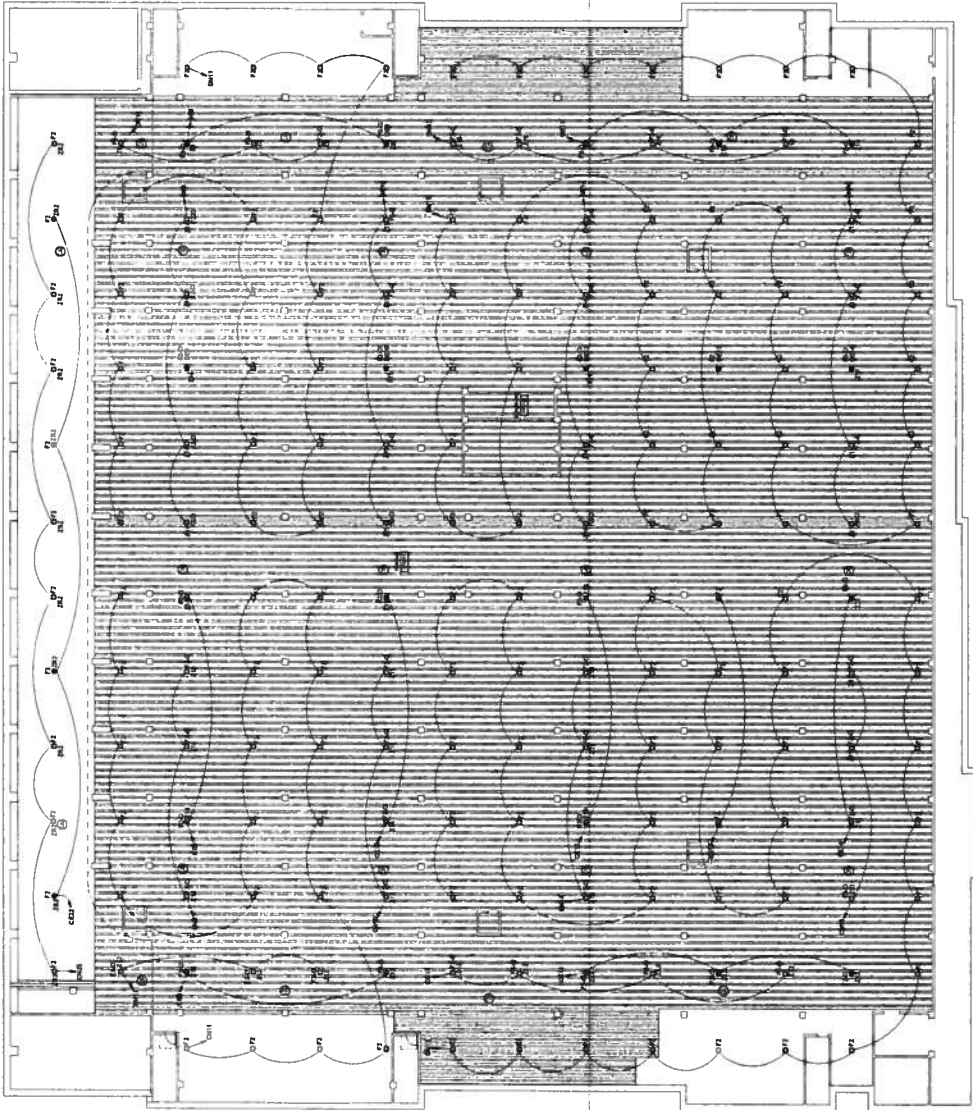
3. ALL LIGHTING SHALL BE IN ACCORDANCE WITH THE LATEST EDITIONS OF THE ILLUMINATING ENGINEERING SOCIETY (IES) HANDBOOK AND THE IES LUMINAIRE PHOTO METERING GUIDE.

ELECTRICAL GENERAL NOTES

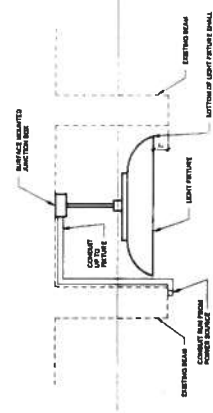
1. ALL ELECTRICAL SHALL BE IN ACCORDANCE WITH THE LATEST EDITIONS OF THE NATIONAL ELECTRICAL CODE (NEC) AND THE NATIONAL FIRE PROTECTION ASSOCIATION (NFPA) 70B.

2. ALL ELECTRICAL SHALL BE IN ACCORDANCE WITH THE LATEST EDITIONS OF THE NATIONAL ELECTRICAL CODE (NEC) AND THE NATIONAL FIRE PROTECTION ASSOCIATION (NFPA) 70B.

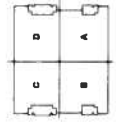
3. ALL ELECTRICAL SHALL BE IN ACCORDANCE WITH THE LATEST EDITIONS OF THE NATIONAL ELECTRICAL CODE (NEC) AND THE NATIONAL FIRE PROTECTION ASSOCIATION (NFPA) 70B.



1 LIGHTING PLAN - LEVEL P2
DATE: 11/11/11



2 LIGHT FIXTURE MOUNTING DETAIL
DATE: 11/11/11



**FULLY SPRINKLERED
BID DOCUMENTS**

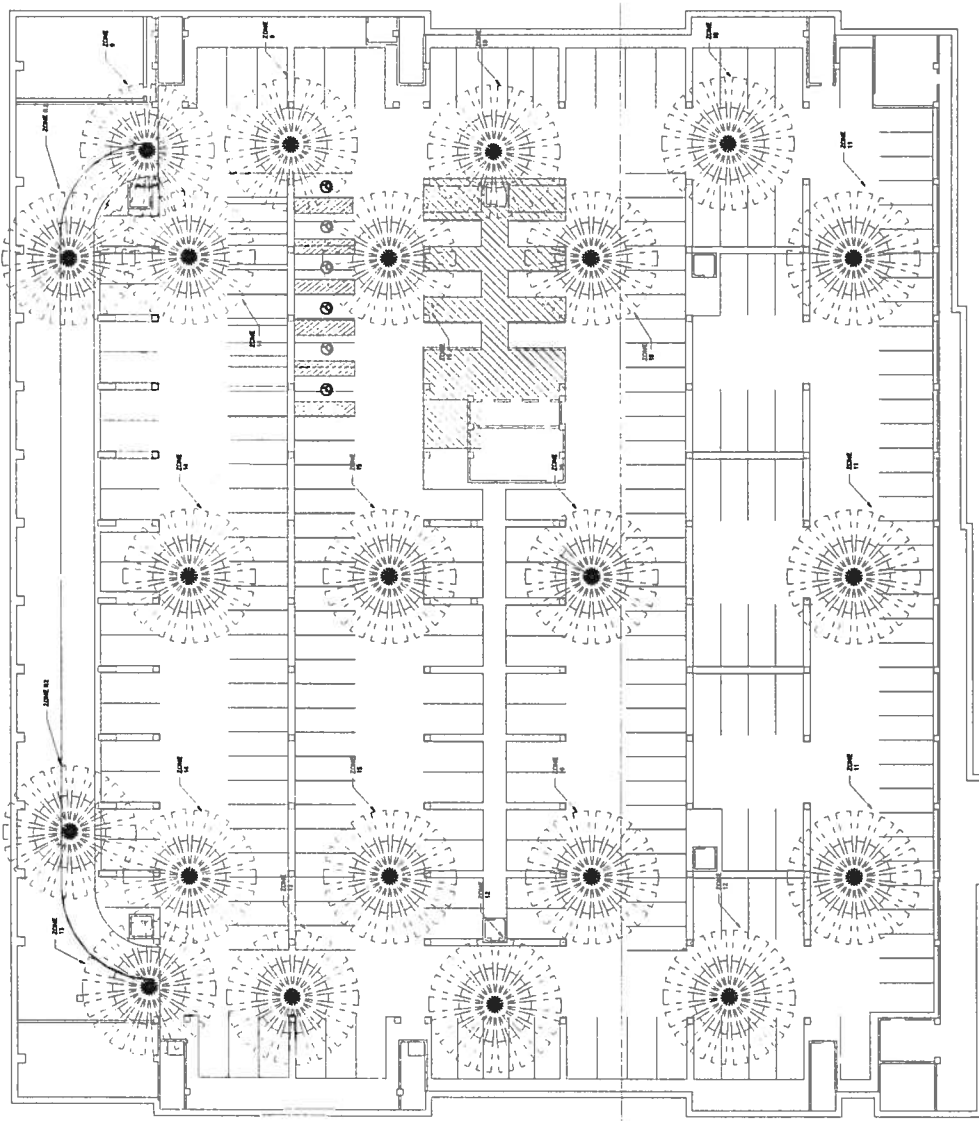
Project Title: BALTIMORE VA MEDICAL CENTER PARKING GARAGE RE-LIGHTING		Project Number: P20112		Office of Construction and Facilities Management	
Location: Baltimore, MD 21201		Building Number:		Drawing Number: ELP2	
Owner:		Contractor:		Design:	
Architect/Engineer:		Contractor:		Design:	
Seal:		Seal:		Seal:	
Consultants:		Consultants:		Consultants:	
Architects/Engineers:		Architects/Engineers:		Architects/Engineers:	
SEAL		SEAL		SEAL	
CONSULTANTS:		CONSULTANTS:		CONSULTANTS:	
Architects/Engineers:		Architects/Engineers:		Architects/Engineers:	
SEAL		SEAL		SEAL	
CONSULTANTS:		CONSULTANTS:		CONSULTANTS:	
Architects/Engineers:		Architects/Engineers:		Architects/Engineers:	
SEAL		SEAL		SEAL	
CONSULTANTS:		CONSULTANTS:		CONSULTANTS:	
Architects/Engineers:		Architects/Engineers:		Architects/Engineers:	
SEAL		SEAL		SEAL	
CONSULTANTS:		CONSULTANTS:		CONSULTANTS:	
Architects/Engineers:		Architects/Engineers:		Architects/Engineers:	
SEAL		SEAL		SEAL	
CONSULTANTS:		CONSULTANTS:		CONSULTANTS:	
Architects/Engineers:		Architects/Engineers:		Architects/Engineers:	
SEAL		SEAL		SEAL	
CONSULTANTS:		CONSULTANTS:		CONSULTANTS:	
Architects/Engineers:		Architects/Engineers:		Architects/Engineers:	
SEAL		SEAL		SEAL	
CONSULTANTS:		CONSULTANTS:		CONSULTANTS:	
Architects/Engineers:		Architects/Engineers:		Architects/Engineers:	
SEAL		SEAL		SEAL	
CONSULTANTS:		CONSULTANTS:		CONSULTANTS:	
Architects/Engineers:		Architects/Engineers:		Architects/Engineers:	
SEAL		SEAL		SEAL	
CONSULTANTS:		CONSULTANTS:		CONSULTANTS:	
Architects/Engineers:		Architects/Engineers:		Architects/Engineers:	
SEAL		SEAL		SEAL	
CONSULTANTS:		CONSULTANTS:		CONSULTANTS:	
Architects/Engineers:		Architects/Engineers:		Architects/Engineers:	
SEAL		SEAL		SEAL	
CONSULTANTS:		CONSULTANTS:		CONSULTANTS:	
Architects/Engineers:		Architects/Engineers:		Architects/Engineers:	
SEAL		SEAL		SEAL	
CONSULTANTS:		CONSULTANTS:		CONSULTANTS:	
Architects/Engineers:		Architects/Engineers:		Architects/Engineers:	
SEAL		SEAL		SEAL	
CONSULTANTS:		CONSULTANTS:		CONSULTANTS:	
Architects/Engineers:		Architects/Engineers:		Architects/Engineers:	
SEAL		SEAL		SEAL	
CONSULTANTS:		CONSULTANTS:		CONSULTANTS:	
Architects/Engineers:		Architects/Engineers:		Architects/Engineers:	
SEAL		SEAL		SEAL	
CONSULTANTS:		CONSULTANTS:		CONSULTANTS:	
Architects/Engineers:		Architects/Engineers:		Architects/Engineers:	
SEAL		SEAL		SEAL	
CONSULTANTS:		CONSULTANTS:		CONSULTANTS:	
Architects/Engineers:		Architects/Engineers:		Architects/Engineers:	
SEAL		SEAL		SEAL	
CONSULTANTS:		CONSULTANTS:		CONSULTANTS:	
Architects/Engineers:		Architects/Engineers:		Architects/Engineers:	
SEAL		SEAL		SEAL	
CONSULTANTS:		CONSULTANTS:		CONSULTANTS:	
Architects/Engineers:		Architects/Engineers:		Architects/Engineers:	
SEAL		SEAL		SEAL	
CONSULTANTS:		CONSULTANTS:		CONSULTANTS:	
Architects/Engineers:		Architects/Engineers:		Architects/Engineers:	
SEAL		SEAL		SEAL	
CONSULTANTS:		CONSULTANTS:		CONSULTANTS:	
Architects/Engineers:		Architects/Engineers:		Architects/Engineers:	
SEAL		SEAL		SEAL	
CONSULTANTS:		CONSULTANTS:		CONSULTANTS:	
Architects/Engineers:		Architects/Engineers:		Architects/Engineers:	
SEAL		SEAL		SEAL	
CONSULTANTS:		CONSULTANTS:		CONSULTANTS:	
Architects/Engineers:		Architects/Engineers:		Architects/Engineers:	
SEAL		SEAL		SEAL	
CONSULTANTS:		CONSULTANTS:		CONSULTANTS:	
Architects/Engineers:		Architects/Engineers:		Architects/Engineers:	
SEAL		SEAL		SEAL	
CONSULTANTS:		CONSULTANTS:		CONSULTANTS:	
Architects/Engineers:		Architects/Engineers:		Architects/Engineers:	
SEAL		SEAL		SEAL	
CONSULTANTS:		CONSULTANTS:		CONSULTANTS:	
Architects/Engineers:		Architects/Engineers:		Architects/Engineers:	
SEAL		SEAL		SEAL	
CONSULTANTS:		CONSULTANTS:		CONSULTANTS:	
Architects/Engineers:		Architects/Engineers:		Architects/Engineers:	
SEAL		SEAL		SEAL	
CONSULTANTS:		CONSULTANTS:		CONSULTANTS:	
Architects/Engineers:		Architects/Engineers:		Architects/Engineers:	
SEAL		SEAL		SEAL	
CONSULTANTS:		CONSULTANTS:		CONSULTANTS:	
Architects/Engineers:		Architects/Engineers:		Architects/Engineers:	
SEAL		SEAL		SEAL	
CONSULTANTS:		CONSULTANTS:		CONSULTANTS:	
Architects/Engineers:		Architects/Engineers:		Architects/Engineers:	
SEAL		SEAL		SEAL	
CONSULTANTS:		CONSULTANTS:		CONSULTANTS:	
Architects/Engineers:		Architects/Engineers:		Architects/Engineers:	
SEAL		SEAL		SEAL	
CONSULTANTS:		CONSULTANTS:		CONSULTANTS:	
Architects/Engineers:		Architects/Engineers:		Architects/Engineers:	
SEAL		SEAL		SEAL	
CONSULTANTS:		CONSULTANTS:		CONSULTANTS:	
Architects/Engineers:		Architects/Engineers:		Architects/Engineers:	
SEAL		SEAL		SEAL	
CONSULTANTS:		CONSULTANTS:		CONSULTANTS:	
Architects/Engineers:		Architects/Engineers:		Architects/Engineers:	
SEAL		SEAL		SEAL	
CONSULTANTS:		CONSULTANTS:		CONSULTANTS:	
Architects/Engineers:		Architects/Engineers:		Architects/Engineers:	
SEAL		SEAL		SEAL	
CONSULTANTS:		CONSULTANTS:		CONSULTANTS:	
Architects/Engineers:		Architects/Engineers:		Architects/Engineers:	
SEAL		SEAL		SEAL	
CONSULTANTS:		CONSULTANTS:		CONSULTANTS:	
Architects/Engineers:		Architects/Engineers:		Architects/Engineers:	
SEAL		SEAL		SEAL	
CONSULTANTS:		CONSULTANTS:		CONSULTANTS:	
Architects/Engineers:		Architects/Engineers:		Architects/Engineers:	
SEAL		SEAL		SEAL	
CONSULTANTS:		CONSULTANTS:		CONSULTANTS:	
Architects/Engineers:		Architects/Engineers:		Architects/Engineers:	
SEAL		SEAL		SEAL	
CONSULTANTS:		CONSULTANTS:		CONSULTANTS:	
Architects/Engineers:		Architects/Engineers:		Architects/Engineers:	
SEAL		SEAL		SEAL	
CONSULTANTS:		CONSULTANTS:		CONSULTANTS:	
Architects/Engineers:		Architects/Engineers:		Architects/Engineers:	
SEAL		SEAL		SEAL	
CONSULTANTS:		CONSULTANTS:		CONSULTANTS:	
Architects/Engineers:		Architects/Engineers:		Architects/Engineers:	
SEAL		SEAL		SEAL	
CONSULTANTS:		CONSULTANTS:		CONSULTANTS:	
Architects/Engineers:		Architects/Engineers:		Architects/Engineers:	
SEAL		SEAL		SEAL	
CONSULTANTS:		CONSULTANTS:		CONSULTANTS:	
Architects/Engineers:		Architects/Engineers:		Architects/Engineers:	
SEAL		SEAL		SEAL	
CONSULTANTS:		CONSULTANTS:		CONSULTANTS:	
Architects/Engineers:		Architects/Engineers:		Architects/Engineers:	
SEAL		SEAL		SEAL	
CONSULTANTS:		CONSULTANTS:		CONSULTANTS:	
Architects/Engineers:		Architects/Engineers:		Architects/Engineers:	
SEAL		SEAL		SEAL	
CONSULTANTS:		CONSULTANTS:		CONSULTANTS:	
Architects/Engineers:		Architects/Engineers:		Architects/Engineers:	
SEAL		SEAL		SEAL	
CONSULTANTS:		CONSULTANTS:		CONSULTANTS:	
Architects/Engineers:		Architects/Engineers:		Architects/Engineers:	
SEAL		SEAL		SEAL	
CONSULTANTS:		CONSULTANTS:		CONSULTANTS:	
Architects/Engineers:		Architects/Engineers:		Architects/Engineers:	
SEAL		SEAL		SEAL	
CONSULTANTS:		CONSULTANTS:		CONSULTANTS:	
Architects/Engineers:		Architects/Engineers:		Architects/Engineers:	
SEAL		SEAL		SEAL	
CONSULTANTS:		CONSULTANTS:		CONSULTANTS:	
Architects/Engineers:		Architects/Engineers:		Architects/Engineers:	
SEAL		SEAL		SEAL	
CONSULTANTS:		CONSULTANTS:		CONSULTANTS:	
Architects/Engineers:		Architects/Engineers:		Architects/Engineers:	
SEAL		SEAL		SEAL	
CONSULTANTS:		CONSULTANTS:		CONSULTANTS:	
Architects/Engineers:		Architects/Engineers:		Architects/Engineers:	
SEAL		SEAL		SEAL	
CONSULTANTS:		CONSULTANTS:		CONSULTANTS:	
Architects/Engineers:		Architects/Engineers:		Architects/Engineers:	
SEAL		SEAL		SEAL	
CONSULTANTS:		CONSULTANTS:		CONSULTANTS:	
Architects/Engineers:		Architects/Engineers:		Architects/Engineers:	
SEAL		SEAL		SEAL	
CONSULTANTS:		CONSULTANTS:		CONSULTANTS:	
Architects/Engineers:		Architects/Engineers:		Architects/Engineers:	
SEAL					



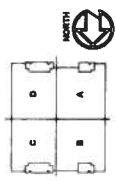
D	A
C	B

**FULLY SPRINKLERED
BID DOCUMENTS**

[illegible]



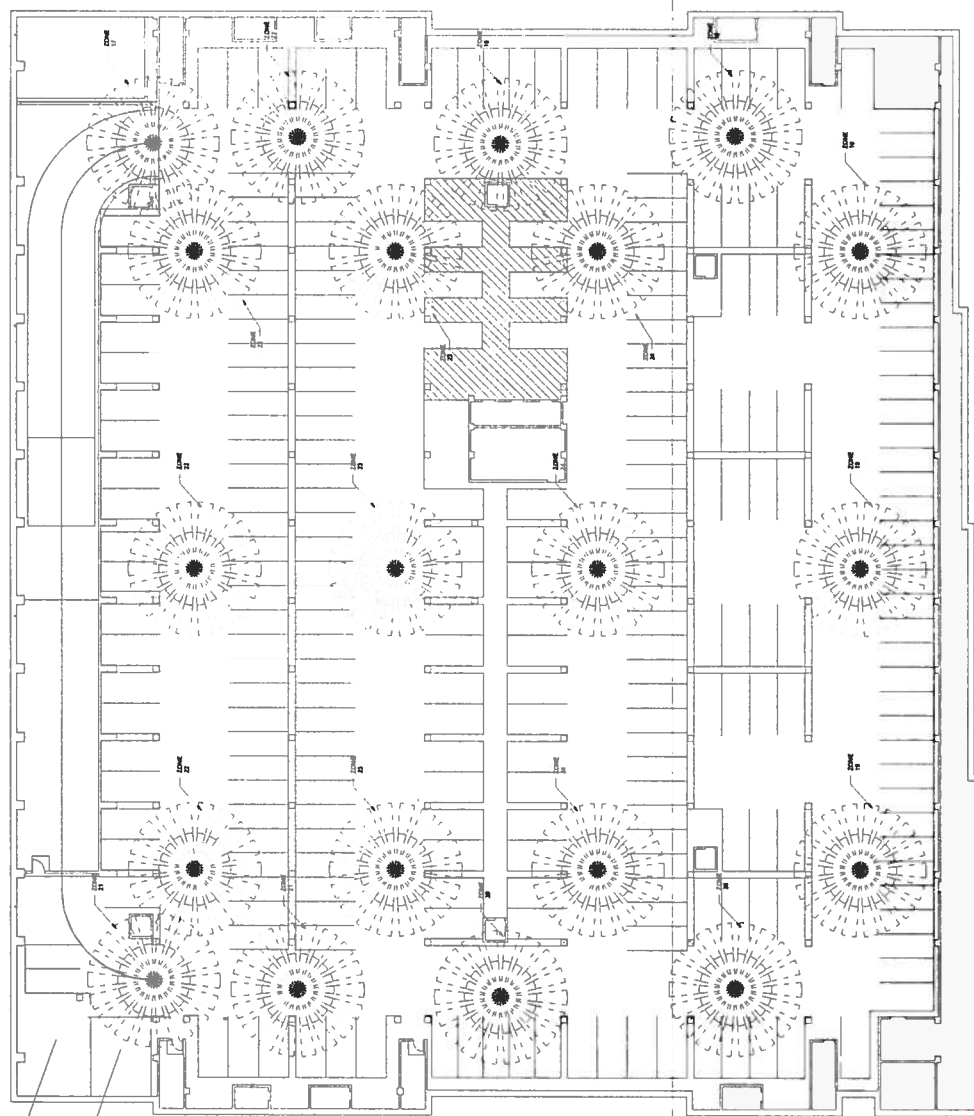
1 LIGHTING CONTROLS PLAN - LEVEL P2
WSP-112



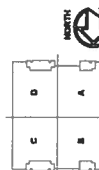
FULLY SPRINKLERED
BID DOCUMENTS

CONSULTANTS: [Blank space for consultant information]		SEAL 		ARCHITECTS/ENGINEERS: 		Project Title: BALTIMORE MEDICAL CENTER PARKING GARAGE RE-LIGHTING		Project Number: 1318-112	
Location: 8100 Green Street Baltimore, MD 21207		Drawn: JMB		Checked: JMB		Design: ELOP2		Scale: 1/8" = 1'-0"	
Project Manager: [Blank space]		Project Engineer: [Blank space]		Project Architect: [Blank space]		Project Engineer: [Blank space]		Project Architect: [Blank space]	





1 LIGHTING CONTROLS PLAN - LEVEL P3
NOT TO SCALE



FULLY SPRINKLERED
BID DOCUMENTS



Project Name PAUL DUNCAN MUSEUM CENTER PARKING GARAGE RE-CLADDING	Building Number 100-1510	Drawing Number ELOC3	Sheet of 1
Location 11 South Street Baltimore, MD 21201	Owner University of Maryland System	Architect A/E WORKS	Engineer A/E WORKS

Scale 1/8" = 1'-0"	Project Number 100-1510
Project Name PAUL DUNCAN MUSEUM CENTER PARKING GARAGE RE-CLADDING	Project Manager A/E WORKS

Project Name PAUL DUNCAN MUSEUM CENTER PARKING GARAGE RE-CLADDING	Project Manager A/E WORKS
Project Number 100-1510	Project Manager A/E WORKS

Project Name PAUL DUNCAN MUSEUM CENTER PARKING GARAGE RE-CLADDING	Project Manager A/E WORKS
Project Number 100-1510	Project Manager A/E WORKS

Project Name PAUL DUNCAN MUSEUM CENTER PARKING GARAGE RE-CLADDING	Project Manager A/E WORKS
Project Number 100-1510	Project Manager A/E WORKS

Project Name PAUL DUNCAN MUSEUM CENTER PARKING GARAGE RE-CLADDING	Project Manager A/E WORKS
Project Number 100-1510	Project Manager A/E WORKS

Project Name PAUL DUNCAN MUSEUM CENTER PARKING GARAGE RE-CLADDING	Project Manager A/E WORKS
Project Number 100-1510	Project Manager A/E WORKS

Project Name PAUL DUNCAN MUSEUM CENTER PARKING GARAGE RE-CLADDING	Project Manager A/E WORKS
Project Number 100-1510	Project Manager A/E WORKS

Branch Panel: PIC-E1									
Location: ELECTRICAL SUBSTATION									
Notes: See drawings for details of wiring and equipment.									
Panel	Panel	Panel	Panel	Panel	Panel	Panel	Panel	Panel	Panel
1	2	3	4	5	6	7	8	9	10
11	12	13	14	15	16	17	18	19	20
21	22	23	24	25	26	27	28	29	30
31	32	33	34	35	36	37	38	39	40
41	42	43	44	45	46	47	48	49	50
51	52	53	54	55	56	57	58	59	60
61	62	63	64	65	66	67	68	69	70
71	72	73	74	75	76	77	78	79	80
81	82	83	84	85	86	87	88	89	90
91	92	93	94	95	96	97	98	99	100
101	102	103	104	105	106	107	108	109	110
111	112	113	114	115	116	117	118	119	120
121	122	123	124	125	126	127	128	129	130
131	132	133	134	135	136	137	138	139	140
141	142	143	144	145	146	147	148	149	150
151	152	153	154	155	156	157	158	159	160
161	162	163	164	165	166	167	168	169	170
171	172	173	174	175	176	177	178	179	180
181	182	183	184	185	186	187	188	189	190
191	192	193	194	195	196	197	198	199	200
201	202	203	204	205	206	207	208	209	210
211	212	213	214	215	216	217	218	219	220
221	222	223	224	225	226	227	228	229	230
231	232	233	234	235	236	237	238	239	240
241	242	243	244	245	246	247	248	249	250
251	252	253	254	255	256	257	258	259	260
261	262	263	264	265	266	267	268	269	270
271	272	273	274	275	276	277	278	279	280
281	282	283	284	285	286	287	288	289	290
291	292	293	294	295	296	297	298	299	300
301	302	303	304	305	306	307	308	309	310
311	312	313	314	315	316	317	318	319	320
321	322	323	324	325	326	327	328	329	330
331	332	333	334	335	336	337	338	339	340
341	342	343	344	345	346	347	348	349	350
351	352	353	354	355	356	357	358	359	360
361	362	363	364	365	366	367	368	369	370
371	372	373	374	375	376	377	378	379	380
381	382	383	384	385	386	387	388	389	390
391	392	393	394	395	396	397	398	399	400
401	402	403	404	405	406	407	408	409	410
411	412	413	414	415	416	417	418	419	420
421	422	423	424	425	426	427	428	429	430
431	432	433	434	435	436	437	438	439	440
441	442	443	444	445	446	447	448	449	450
451	452	453	454	455	456	457	458	459	460
461	462	463	464	465	466	467	468	469	470
471	472	473	474	475	476	477	478	479	480
481	482	483	484	485	486	487	488	489	490
491	492	493	494	495	496	497	498	499	500
501	502	503	504	505	506	507	508	509	510
511	512	513	514	515	516	517	518	519	520
521	522	523	524	525	526	527	528	529	530
531	532	533	534	535	536	537	538	539	540
541	542	543	544	545	546	547	548	549	550
551	552	553	554	555	556	557	558	559	560
561	562	563	564	565	566	567	568	569	570
571	572	573	574	575	576	577	578	579	580
581	582	583	584	585	586	587	588	589	590
591	592	593	594	595	596	597	598	599	600
601	602	603	604	605	606	607	608	609	610
611	612	613	614	615	616	617	618	619	620
621	622	623	624	625	626	627	628	629	630
631	632	633	634	635	636	637	638	639	640
641	642	643	644	645	646	647	648	649	650
651	652	653	654	655	656	657	658	659	660
661	662	663	664	665	666	667	668	669	670
671	672	673	674	675	676	677	678	679	680
681	682	683	684	685	686	687	688	689	690
691	692	693	694	695	696	697	698	699	700
701	702	703	704	705	706	707	708	709	710
711	712	713	714	715	716	717	718	719	720
721	722	723	724	725	726	727	728	729	730
731	732	733	734	735	736	737	738	739	740
741	742	743	744	745	746	747	748	749	750
751	752	753	754	755	756	757	758	759	760
761	762	763	764	765	766	767	768	769	770
771	772	773	774	775	776	777	778	779	780
781	782	783	784	785	786	787	788	789	790
791	792	793	794	795	796	797	798	799	800
801	802	803	804	805	806	807	808	809	810
811	812	813	814	815	816	817	818	819	820
821	822	823	824	825	826	827	828	829	830
831	832	833	834	835	836	837	838	839	840
841	842	843	844	845	846	847	848	849	850
851	852	853	854	855	856	857	858	859	860
861	862	863	864	865	866	867	868	869	870
871	872	873	874	875	876	877	878	879	880
881	882	883	884	885	886	887	888	889	890
891	892	893	894	895	896	897	898	899	900
901	902	903	904	905	906	907	908	909	910
911	912	913	914	915	916	917	918	919	920
921	922	923	924	925	926	927	928	929	930
931	932	933	934	935	936	937	938	939	940
941	942	943	944	945	946	947	948	949	950
951	952	953	954	955	956	957	958	959	960
961	962	963	964	965	966	967	968	969	970
971	972	973	974	975	976	977	978	979	980
981	982	983	984	985	986	987	988	989	990
991	992	993	994	995	996	997	998	999	1000

Branch Panel PIC-H									
Location: ELECTRICAL SUBSTATION									
Notes: See drawings for details of wiring and equipment.									
Panel	Panel	Panel	Panel	Panel	Panel	Panel	Panel	Panel	Panel
1	2	3	4	5	6	7	8	9	10
11	12	13	14	15	16	17	18	19	20
21	22	23	24	25	26	27	28	29	30
31	32	33	34	35	36	37	38	39	40
41	42	43	44	45	46	47	48	49	50
51	52	53	54	55	56	57	58	59	60
61	62	63	64	65	66	67	68	69	70
71	72	73	74	75	76	77	78	79	80
81	82	83	84	85	86	87	88	89	90
91	92	93	94	95	96	97	98	99	100
101	102	103	104	105	106	107	108	109	110
111	112	113	114	115	116	117	118	119	120
121	122	123	124	125	126	127	128	129	130
131	132	133	134	135	136	137	138	139	140
141	142	143	144	145	146	147	148	149	150
151	152	153	154	155	156	157	158	159	160
161	162	163	164	165	166	167	168	169	170
171	172	173	174	175	176	177	178	179	180
181	182	183	184	185	186	187	188	189	190
191	192	193	194	195	196	197	198	199	200
201	202	203	204	205	206	207	208	209	210
211	212	213	214	215	216	217	218	219	220
221	222	223	224	225	226	227	228	229	230
231	232	233	234	235	236	237	238	239	240
241	242	243	244	245	246	247	248	249	250
251	252	253	254	255	256	257	258	259	260
261	262	263	264	265	266	267	268	269	270
271	272	273	274	275	276	277	278	279	280
281	282	283	284	285	286	287	288	289	290
291	292	293	294	295	296	297	298	299	300
301	302	303	304	305	306	307	308	309	310
311	312	313	314	315	316	317	318	319	320
321	322	323	324	325	326	327	328	329	330
331	332	333	334	335	336	337	338	339	340
341	342	343	344	345	346	347	348	349	350
351	352	353	354	355	356	357	358	359	360
361	362	363	364	365	366	367	368	369	370
371	372	373	374	375	376	377	378	379	380
381	382	383	384	385	386	387	388	389	390
391	392	393	394	395	396	397	398	399	400
401	402	403	404	405	406	407	408	409	410
411	412	413	414	415	416	417	418	419	420
421	422	423	424	425	426	427	428	429	430
431	432	433	434	435	436	437	438	439	440
441	442	443	444	445	446	447	448	449	450
451	452	453	454	455	456	457	458	459	460
461	462	463	464	465	466	467	468	469	470
471	472	473	474	475	476	477	478	479	480
481	482	483	484	485	486	487	488	489	490
491	492	493	494	495	496	497	498	499	500
501	502	503	504	505	506	507	508	509	510
511	512	513	514	515	516	517	518	519	520
521	522	523	524	525	526	527	528	529	530
531	532	533	534	535	536	537	538	539	540
541	542	543	544	545	546	547	548	549	550
551	552	553	554	555	556	557	558	559	560
561	562	563	564	565	566	567	568	569	570
571	572	573	574	575	576	577	578	579	580
581	582	583	584	585	586	587	588	589	590
591	592	593	594	595	596	597	598	599	600
601	602	603	604	605	606	607	608	609	610
611	612	613	614	615	616	617	618	619	620
621	622	623	624	625	626	627	628	629	630
631	632	633	634	635	636	637	638	639	640
641	642	643	644	645	646	647	648	649	650
651	652	653	654	655	656	657	658	659	660
661	662	663	664	665	666	667	668	669	670
671	672	673	674	675	676	677	678	679	680
681	682	683	684	685	686	687	688	689	690
691	692	693	694	695	696	697	698	699	700
701	702	703	704	705	706	707	708	709	710
711	712	713	714	715	716	717	718	719	720
721	722	723	724	725	726	727	728	729	730
731	732	733	734	735	736	737	738	739	740
741	742	743	744	745	746	747	748	749	750
751	752	753	754	755	756	757	758	759	760
761	762	763	764	765	766	767	768	769	770
771	772	773	774	775	776	777	778	779	780
781	782	783	784	785	786	787	788	789	790
791	792	793	794	795	796	797	798	799	800
801	802	803	804	805	806	807	808	809	810
811	812	813	814	815	816	817	818	819	820
821	822	823	824	825	826	827	828	829	830
831	832	833	834	835	836	837	838	839	840
841	842	843	844	845	846	847	848	849	850
851	852	853	854	855	856	857	858	859	860
861	862	863	864	865	866	867	868	869	870
871	872	873	874	875	876	877	878	879	880
881	882	883	884	885	886	887	888	889	890
891	892	893	894	895	896	897	898	899	900
901	902	903	904	905	906	907	908	909	910
911	912	913	914	915	916	917	918	919	920
921	922	923	924	925	926	927	928	929	930
931	932	933	934	935	936	937	938	939	940
941	942	943	944	945	946	947	948	949	950
951	952	953	954	955	956	957	958	959	960
961	962	963	964	965	966	967	968	969	970
971	972	973	974	975	976	977	978	979	980
981	982	983	984	985	986	987	988	989	990
991	992	993	994	995	996	997	998	999	1000
1001	1002	1003	1004	1005	1006	1007	1008	1009	1010
1011	1012	1013	1014	1015	1016	1017	1018	1019	1020
1021	1022	1023	1024	1025	1026	1027	1028	1029	1030
1031	1032	1033	1034	1035	1036	1037	1038	1039	1040
1041	1042	1043	1044	1045	1046	1047	1048	1049	1050
1051	1052	1053	1054	1055	1056	1057	1058	1059	1060
1061	1062	1063	1064	1065	1066	1067	1068	1069	1070
1071	1072	1073	1074	1075	1076	1077	1078	1079	1080
1081	1082	1083	1084	1085	1086	1087	1088	1089	1090
1091	1092	1093	1094	1095	1096	1097	1098	1099	1100
1101	1102	1103	1104	1105	1106	1107	1108	1109	1110
1111	1112	1113	1114	1115	1116	1117	1118	1119	1120
1121	1122	1123	1124	1125	1126	1127	1128	1129	1130
1131	1132	1133	1134	1135	1136	1137	1138	1139	1140
1141	1142	1143	1144	1145	1146	1147	1148	1149	1150
1151	1152	1153	1154	1155	1156	1157	1158	1159	1160
1161	1162	1163	1164	1165	1166	1167	1168	1169	1170
1171	1172	1173	1174	1175	1176	1177	1178	1179	1180
1181	1182	1183	1184	1185	1186	1187	1188	1189	1190
1191	1192	1193	1194	1195	1196	1197	1198	1199	1200
1201	1202	1203	1204	1205	1206	1207	1208	1209	1210
1211	1212	1213	1214	1215	1216	1217	1218	1219	1220
1221	1222	1223	1224	1225	1226	1227	1228	1229	1230
1231	1232	1233	1234	1235	1236	1237	1238	1239	1240
1241	1242	1243	1244	1245	1246	1247	1248	1249	1250
1251	1252	1253	1254	1255	1256	1257	1258	1259	1260
1261	1262	1263	1264	1265	1266	1267	1268	1269	1270
1271	1272	1273	1274	1275	1276	1277	1278	1279	1280
1281	1282	1283	1284	1285	1286	1287	1288	1289	1290
1291	1292	1293	1294	1295	1296	1297	1298	1299	1300
1301	1302	1303	1304	1305	1306	1307	1308	1309	1310
1311	1312	1313	1314	1315	1316	1317	1318	1319	1320
1321	1322	1323	1324	1325	1326	1327	1328	1329	1330
1331	1332	1333	1334	1335	1336	1337	1338	1339	1340
1341	1342	1343	1344	1345	1346	1347	1348	1349	1350
1351	1352	1353	1354	1355	1356	1357	1358	1359	1360
1361	1362	1363	1364	1365	1366	1367	1368	1369	1370
1371	1372	1373	1374	1375	1376	1377	1378	1379	1380
1381	1382	1383	1384	1385	1386	1387	1388	1389	1390
1391	1392	1393	1394	1395	1396	1397	1398	1399	1400
1401	1402	1403	1404	1405	1406	1407	1408	1409	1410
1411	1412	1413	1414	1415	1416	1417	1418	1419	1420
1421	1422								