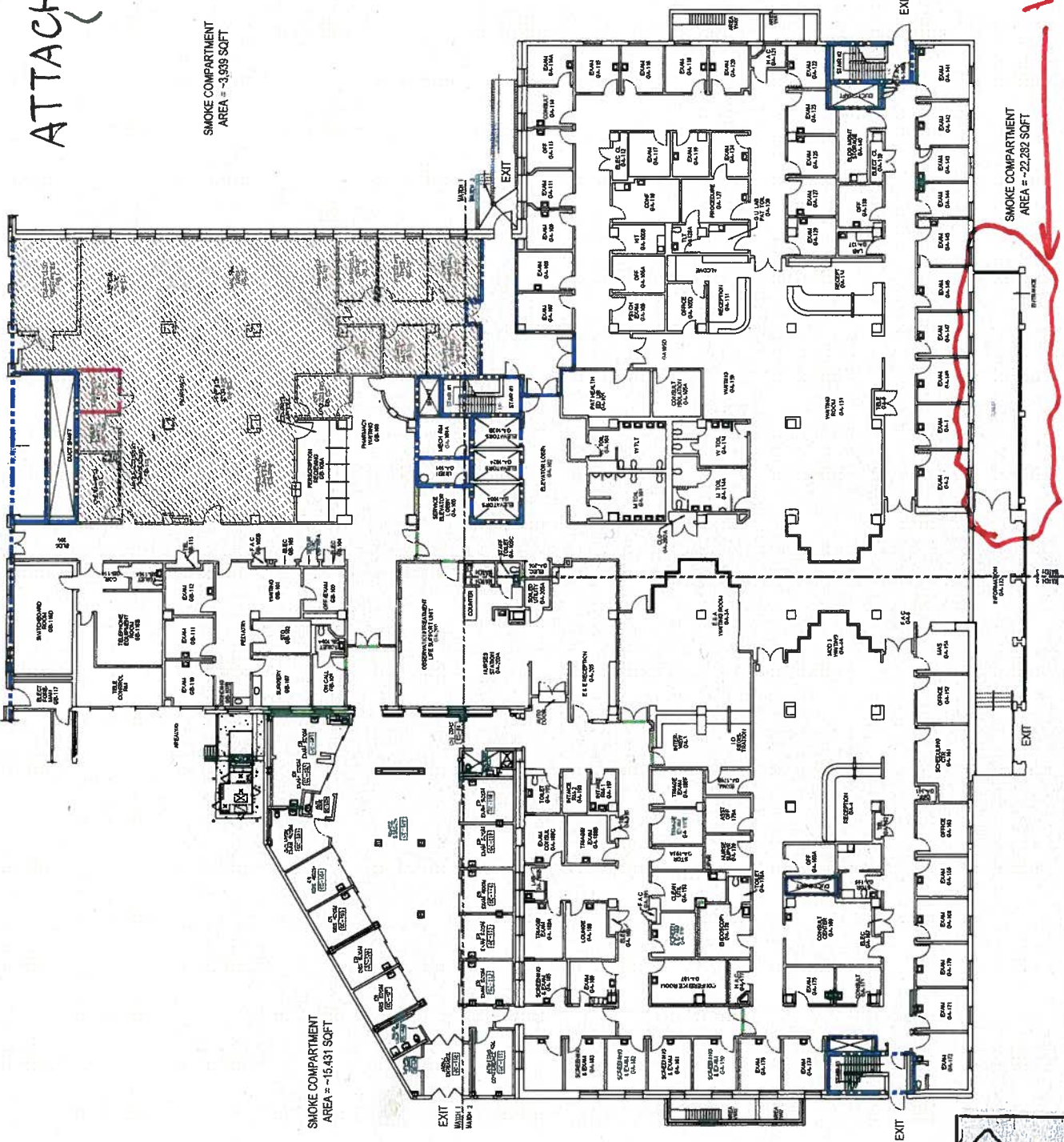


# ATTACHMENT-C1 (PAGE-1)



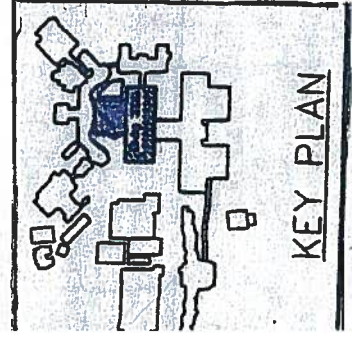
SCALE:  
1/32"=1'-0"  
DRAWN BY:  
JAM

BLDG 200  
GROUND FLOOR  
OVERALL  
BBI Drawings

**VA MEDICAL CENTER**  
San Francisco, California

**LEGEND**

1HR FR CONSTRUCTION	NON-PATIENT SUITE
2HR FR CONSTRUCTION	NON-SLEEPING SUITE
SMOKE BARRIER	SLEEPING SUITE
HAZARDOUS AREA	
SMOKE RESISTIVE CONST.	



LS-1

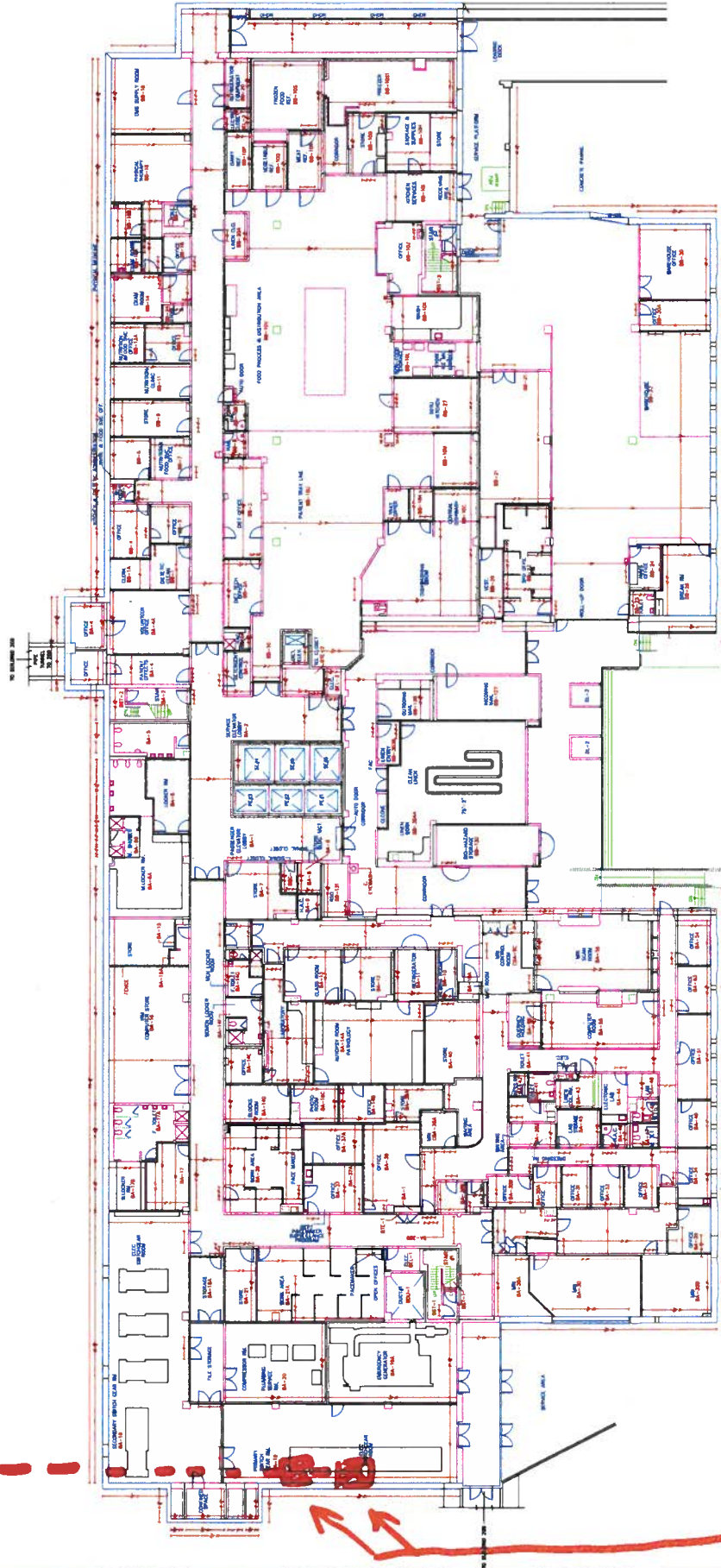


ATTACHMENT - C1 (PAGE 2)  
B-200 ENTRANCE





# ATTACHMENT - C2 (PAGE 1) B203 BASEMENT



FIRE MAIN VALVES  
IN PIPE BASEMENT  
BELOW

		Date: 04-17-2009 Project No.: Drawing No.:	
Drawing Title: BASEMENT FLOOR PLAN ARCHITECTURAL		Project Title: AS-BUILT Drawings	
Approved:		Building Number: 203 Checked: [ ] Location: VAMC, SAN FRANCISCO	
Approved:		Location: VAMC, SAN FRANCISCO	
Indus Systems, Inc. 2352, Main Street, Concord MA 01742 Tel: 978-461-0555 <a href="http://www.indus-systems.com">www.indus-systems.com</a>		Professional Seal	
Revisions		Title	



B-203

SB

WEST  
SIDE

UP TO BLDG



SHUT  
OFF  
VALVE

V2

BFP

V1

--- FIRE MAIN ---  
BEHIND CONDUITS