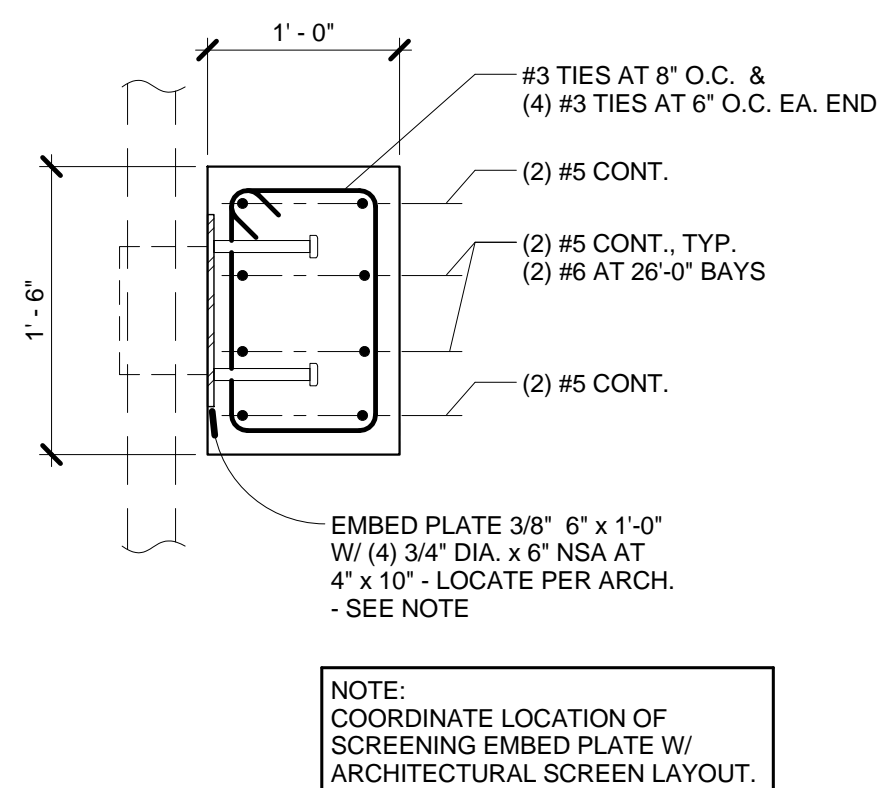
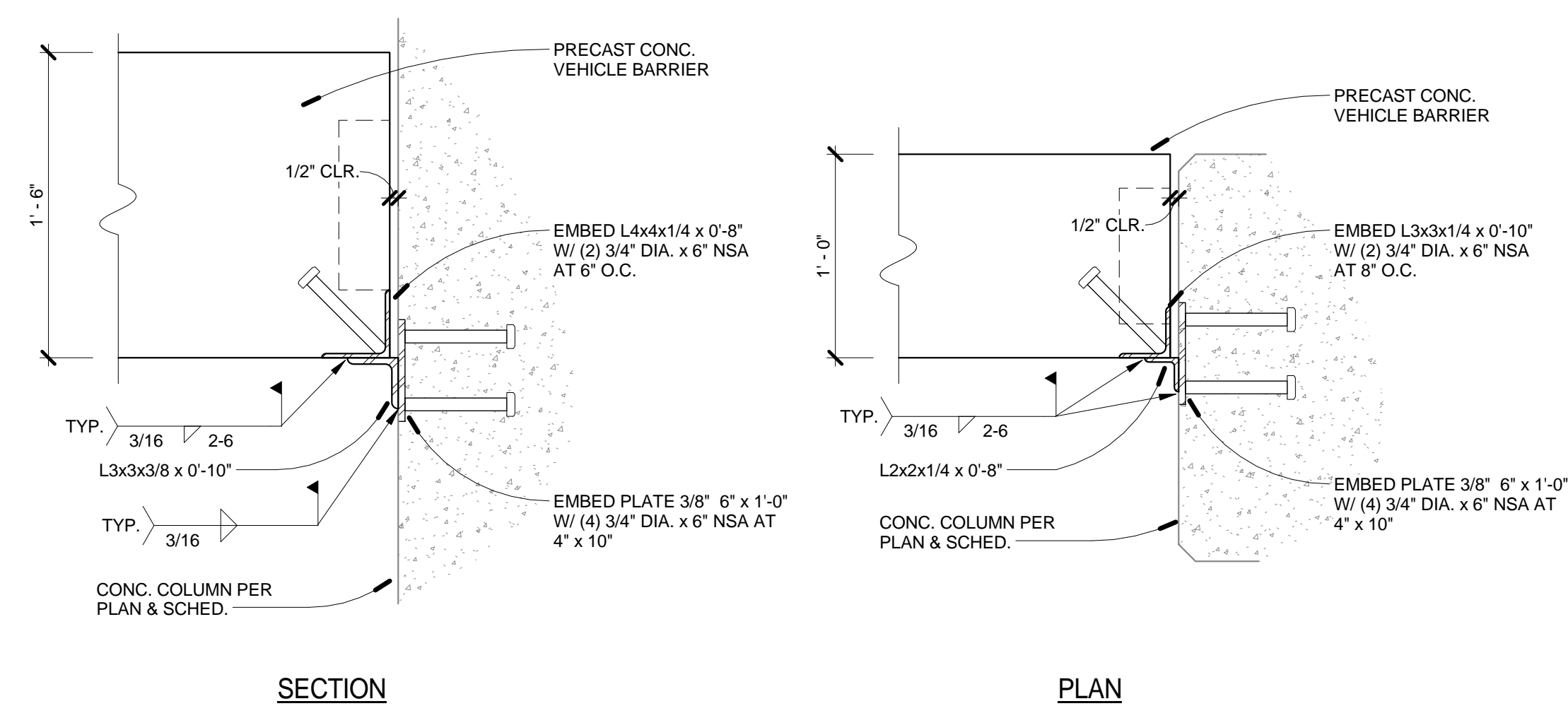


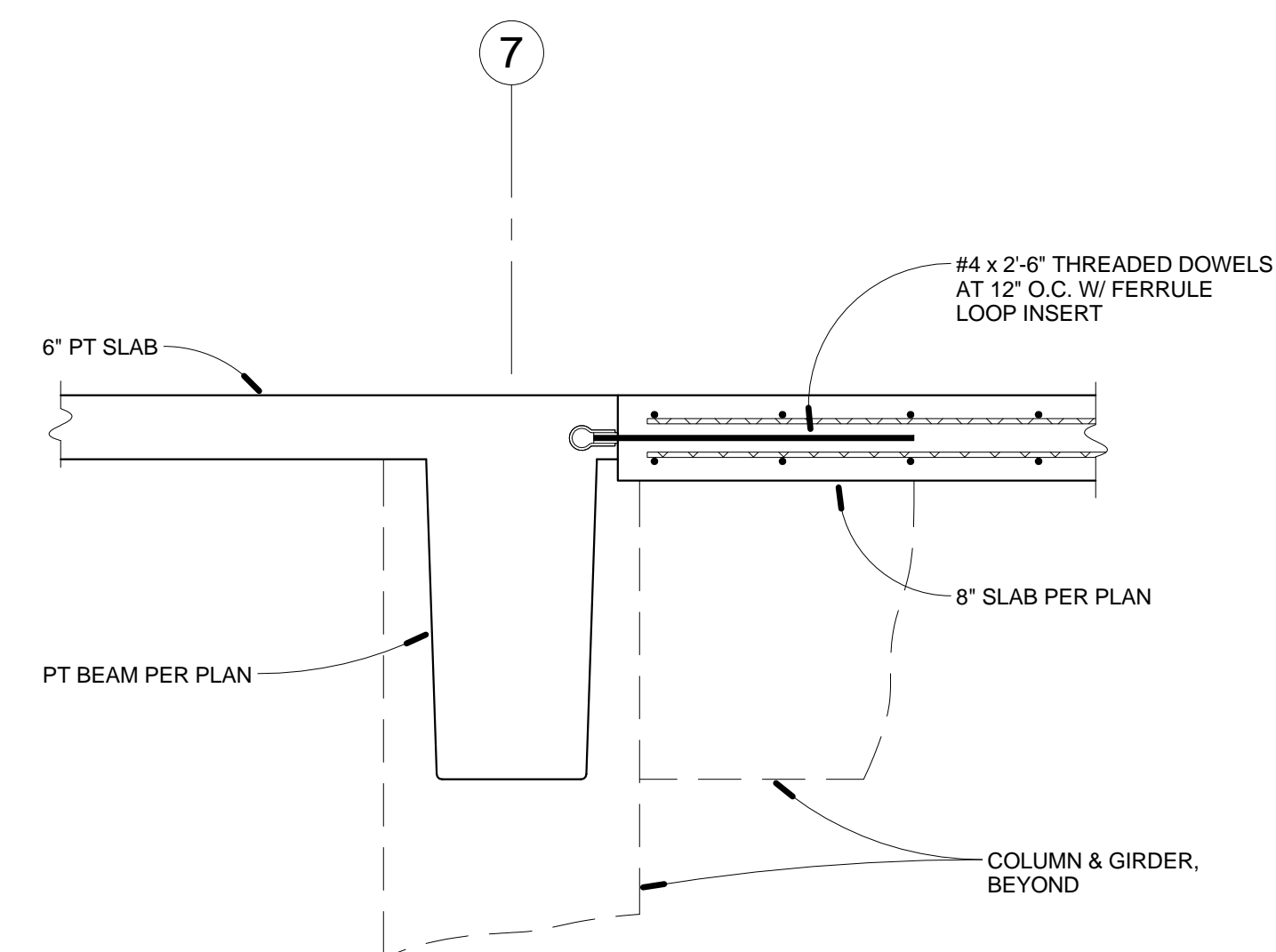
2 TYPICAL COLUMN FOOTING AND BASE PLATE
SS012 NO SCALE



5 PRECAST VEHICLE BARRIERS
SS012 NO SCALE

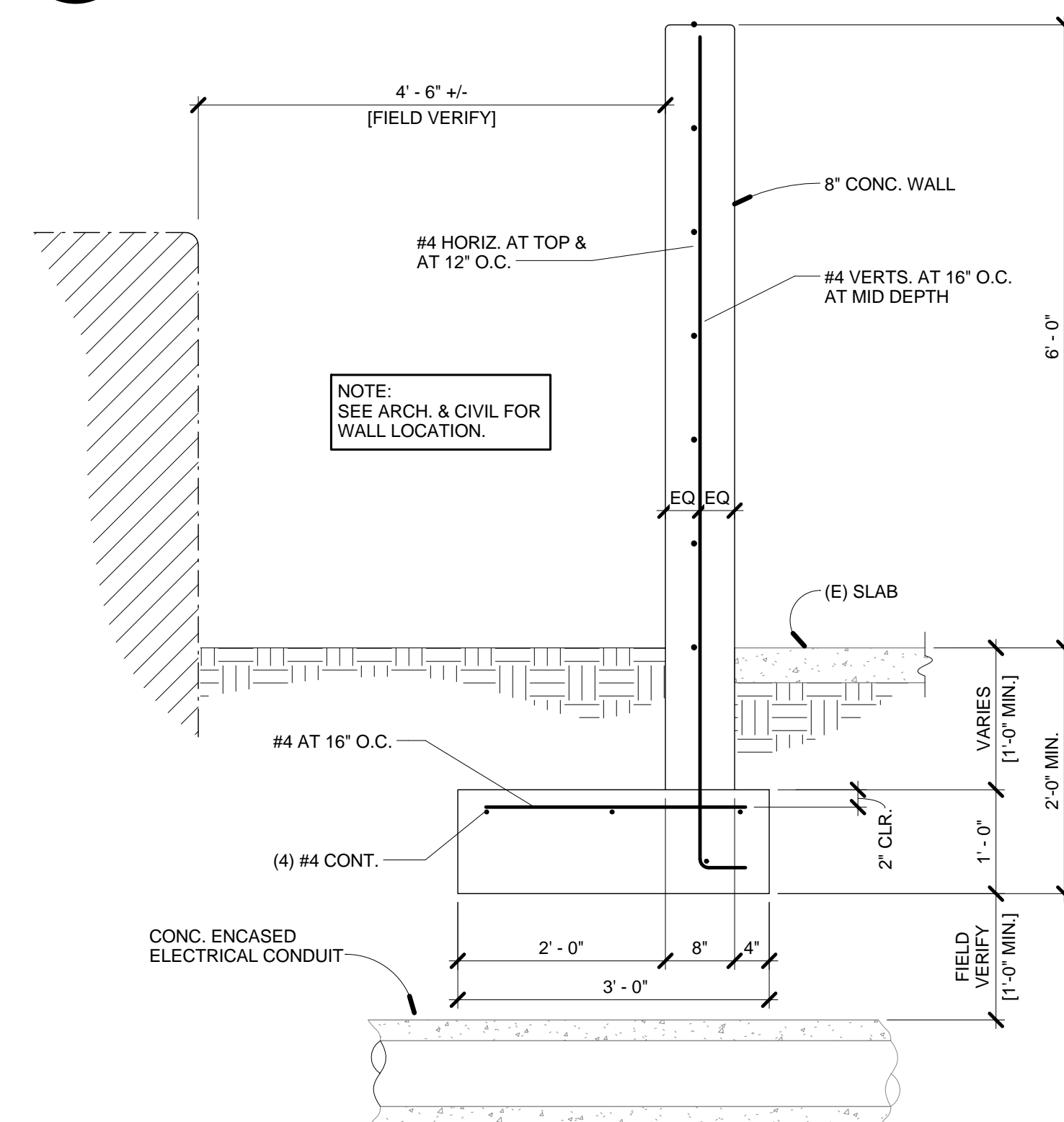


7 PRECAST VEHICLE BARRIER CONN.
SS012 1 1/2" = 1'-0"



9 TYP. 8" SLAB (SPEED RAMP) AT SHEAR WALL
SS012 NO SCALE

10 TYP. SECTION AT 8" SLAB AT TOP LEVEL
SS012 NO SCALE

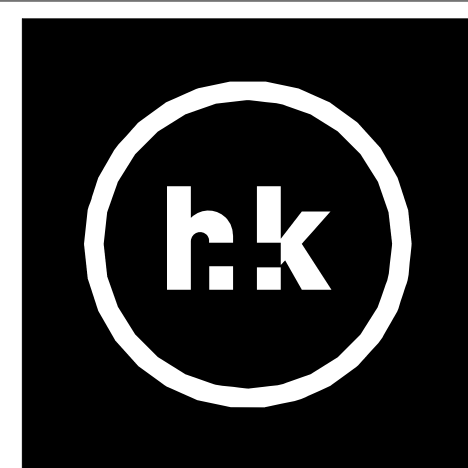


11 MONUMENT SIGN DETAIL
SS012 3/4" = 1'-0"

CONSULTANTS:



ARCHITECT/ENGINEERS:
H+K ARCHITECTS
5485 Reno Corporate Drive, Suite 100
Reno, Nevada 89511-2262
P 775+332+6640
F 775+332+6642
hkarchitects.com



Drawings Title	Typical Concrete Details
----------------	--------------------------

Approved: Project Director

Project Title	VA Sierra Nevada Parking Structure
---------------	------------------------------------

Location		
975 Kirman Ave., Reno, Nevada		
Date	Checked	Drawn
January 20, 2014	RH	

Project Number	654-CSI-914
Building Number	

Drawing Number	SS012
----------------	-------

Office of
Construction
and Facilities
Management

