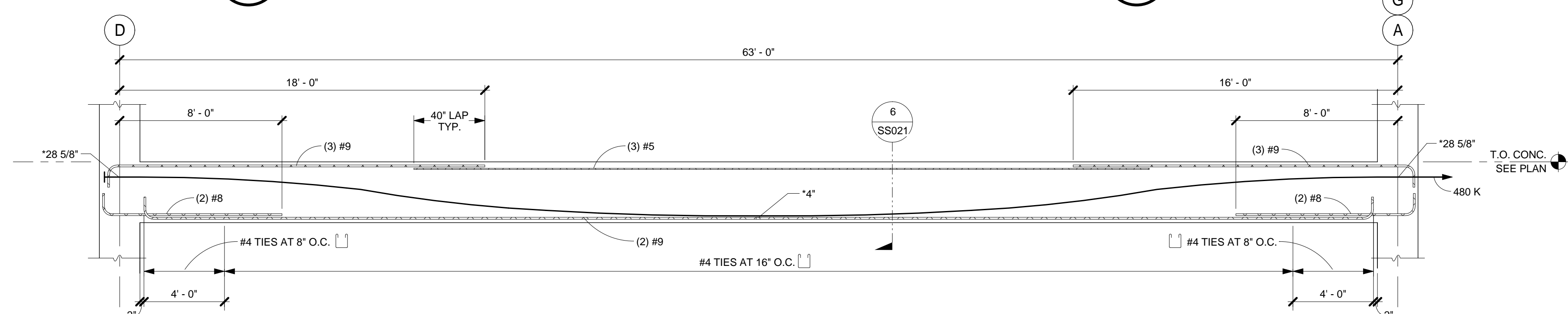
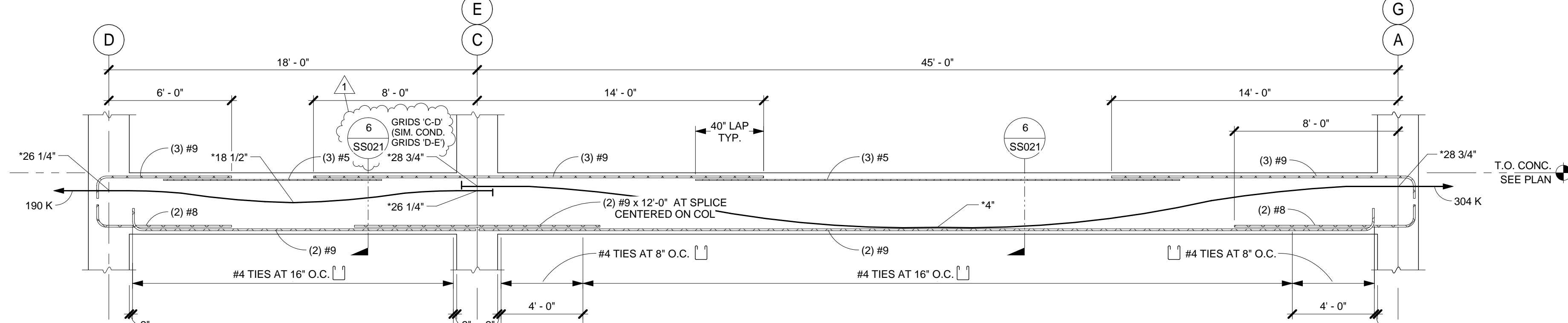


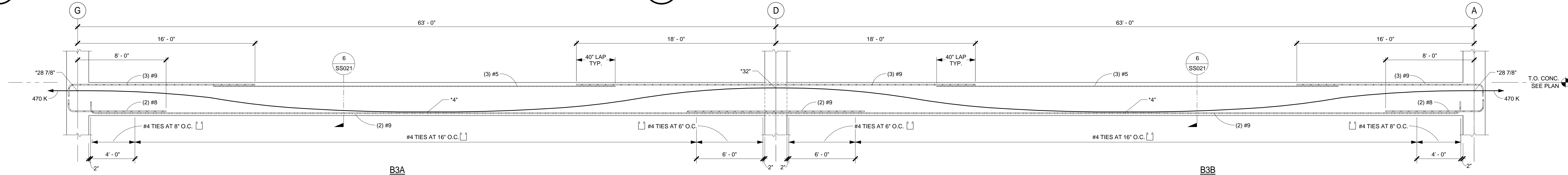
3 GIRDER ELEVATION - G3
SF205 NO SCALE



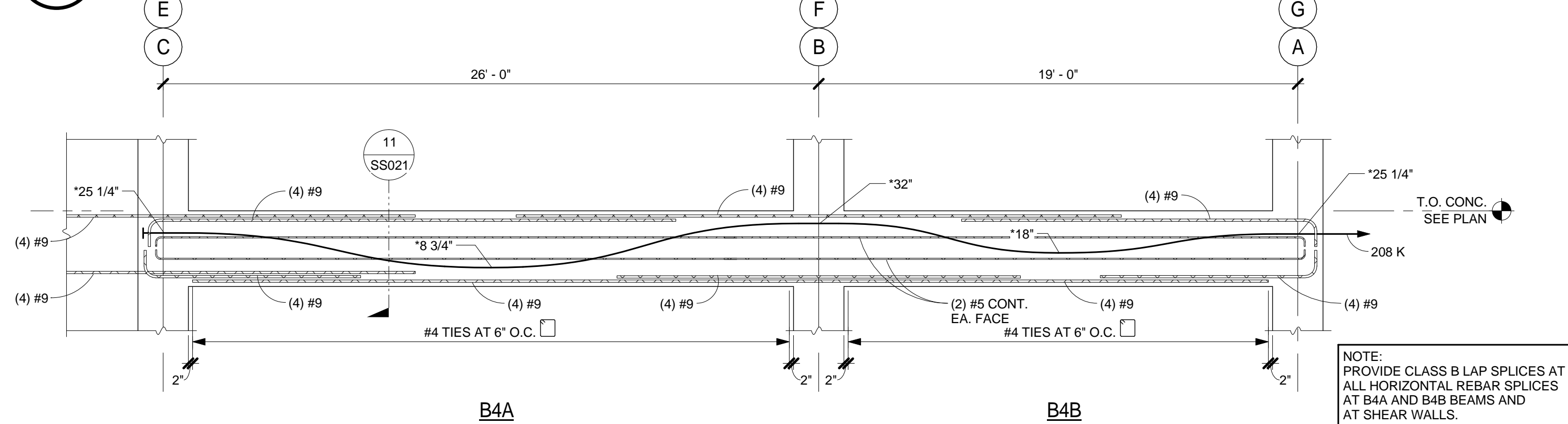
5 BEAM ELEVATION - B1
SF205 NO SCALE



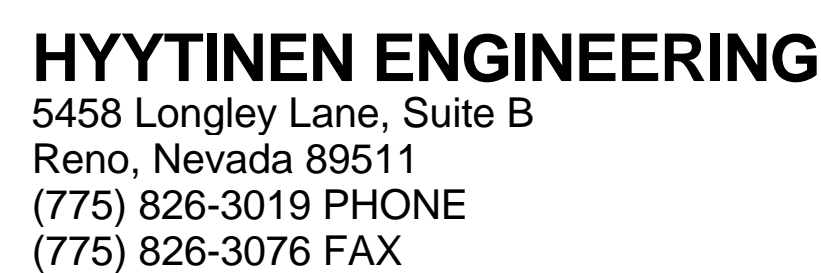
7 BEAM ELEVATION - B2A & B2B
SF205 NO SCALE



NOTE: TOTAL PT FORCE = 470 K



9 BEAM ELEVATION - B4A & B4B
SF205 NO SCALE

CONSULTANTS:

Professional Seal



Approved: Project Director

	Drawing Number

Office of
Construction
and Facilities
Management



Bid Documents