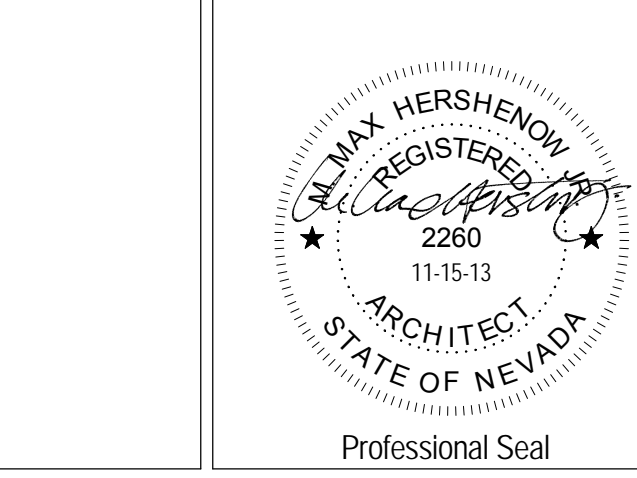


one eighth inch = one foot
one quarter inch = one foot
one half inch = one foot
three eighths inch = one foot
one inch = one foot
one and one half inches = one foot
three inches = one foot

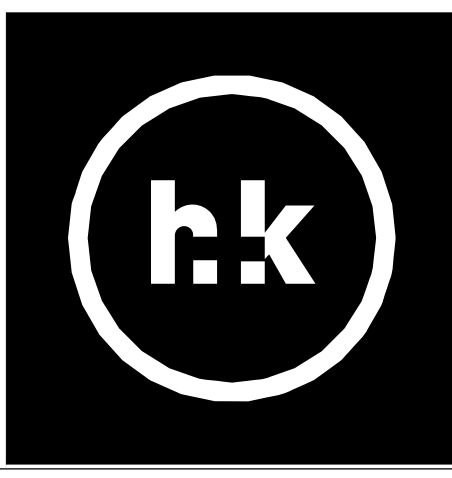
2/25/2014 4:14:48 PM C:\HK\Load Project\1206\1206.dwg VA Parking Garage Central - Job.nrw

| Number | Revision | Date |
|--------|--------------|----------|
| 1 | Amendment #4 | 02/25/14 |
| | | |
| | | |
| | | |
| | | |
| | | |
| | | |
| | | |
| | | |
| | | |

CONSULTANTS:



ARCHITECT/ENGINEERS:
H+K ARCHITECTS
5485 Reno Corporate Drive, Suite 100
Reno, Nevada 89511-2262
P 775+332+6640
F 775+332+6642
hkarchitects.com



| |
|----------------------------|
| Drawings Title |
| Roof Plans and Details |
| Approved: Project Director |

| | | | |
|-----------------|------------------------------------|----------------|------------------|
| Project Title | VA Sierra Nevada Parking Structure | Project Number | 654-CS1-914 |
| Building Number | 16 | Drawing Number | AE201 |
| Location | 975 Kirman Ave., Reno, Nevada | Date | January 20, 2014 |
| Checked | MH | Drawn | JV, DG, JC |

Office of
Construction
and Facilities
Management
 Department of
Veterans Affairs

Roof Notes

- Refer to Mechanical and/or Electrical drawings for additional information on mechanical and electrical components. Components are shown for reference only. See Mechanical and/or Electrical drawings for exact location and quantities.
- The Single-ply Roof System is to include the following:
 - Metal deck on steel framing. See Structural drawings for framing.
 - Rigid roof insulation mechanically fastened to metal deck.
 - Substrate board mechanically fastened to metal deck.
 - Single ply membrane with welded seams. See Specifications.
- Metal Roof System:
 - Metal deck on steel framing. See Structural drawings.
 - Cold-Formed Metal framing. See Structural.
 - 5/8" Exterior Gypsum Board Substrate mechanically fastened to metal framing.
 - Underlayment - see Specifications.
 - Metal roofing mechanically fastened to metal framing - see Specifications.
- Where roofing manufacturer's roofing or flashing requirements vary from those described on details, Contractor shall provide roofing manufacturer's approved details as necessary to fulfill warranty requirements.
- Contractor shall completely protect the entire roof for the duration of construction procedures on the roof. Protection shall include coverings necessary to protect the roof from foot traffic, equipment, welding and other potentially damaging sources.
- All pipe and conduit penetrations are to be flashed per manufacturer's recommendations and details.
- Roof and parapet framing shall be Cold-Formed Metal Framing unless noted otherwise. See Structural Drawings and Specification Section 05400.

Project Keynotes

| Keynote | Description |
|------------|---|
| 033000 | Cast-In-Place Concrete |
| 042000 | Unit Masonry |
| 051200 | Structural Steel Framing |
| 053100 | Steel Decking |
| 054000 | Cold-Formed Metal Framing |
| 055000 | Metal Fabrications |
| 055100 | Metal Stairs |
| 057300 | Decorative Metal Railings |
| 072200 | Roof and Deck Insulation |
| 074000 | Roofing and Siding Panels |
| 074020.2.2 | Insulated Metal Wall Panels |
| 074020.2.3 | Exterior Exposed Fastener Metal Wall Panels |
| 074213 | Metal Wall Panels |
| 075419 | Polyvinyl-Chloride (PVC) Roofing |
| 077200 | Roof Accessories |
| 084413 | Glazed Aluminum Curtain Walls |
| 092900 | Gypsum Board |
| 095423 | Linear Metal Ceilings |
| 124813 | Entrance Floor Mats and Frames |
| 142100 | Electric Traction Elevators |

11 Roof Access Ladder

7 Roof Hatch Detail

10 Roof Drain Detail

6 Roof Drain and Overflow Detail

9 Roof Drain Plan

5 Roof Drain Plan

4 Roof Plan - West Stair

3 Roof Plan - East Stair

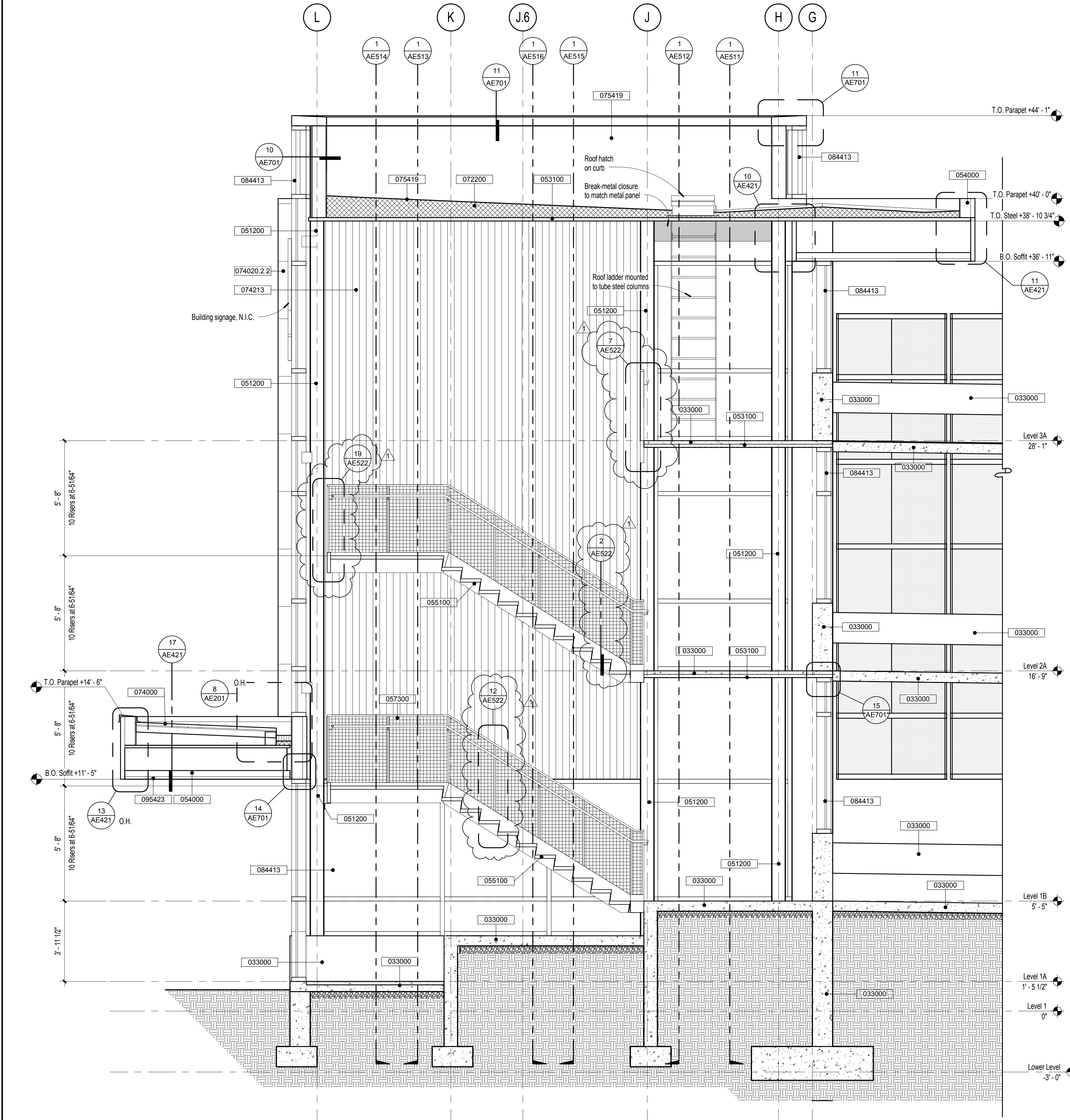
2 Canopy Roof - West Stair

1 Canopy Roof - East Stair

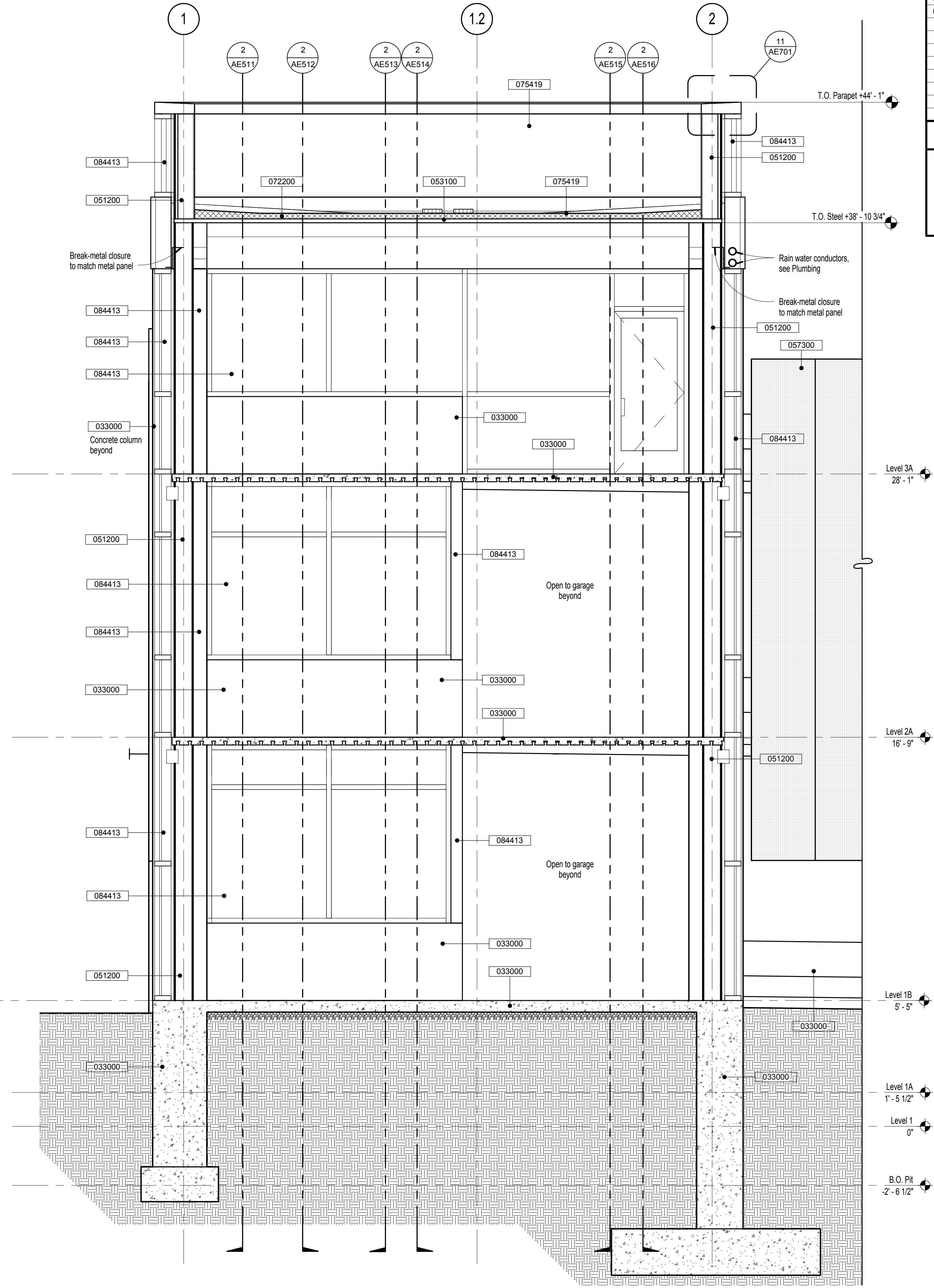
Bid Documents

one eighth inch = one foot
one quarter inch = one foot
three eighths inch = one foot
one half inch = one foot
three quarters inch = one foot
one inch = one foot
one and one half inches = one foot
two inches = one foot
three inches = one foot

2/25/2014 4:14:58 PM C:\HK Local Projects\1206\1206\VA Parking Garage Central.dgn nvt



2 West Stair Section
3/8" = 1'-0"



1 West Stair Section
3/8" = 1'-0"

Project Keynotes

| Keynote | Description |
|------------|---|
| 033000 | Cast-In-Place Concrete |
| 042000 | Unit Masonry |
| 051200 | Structural Steel Framing |
| 053100 | Steel Decking |
| 054000 | Cold-Formed Metal Framing |
| 055000 | Metal Fabrications |
| 055100 | Metal Stairs |
| 057300 | Decorative Metal Railings |
| 072200 | Roof and Deck Insulation |
| 074000 | Roofing and Siding Panels |
| 074020.2.2 | Insulated Metal Wall Panels |
| 074020.2.3 | Exterior Exposed Fastener Metal Wall Panels |
| 074213 | Metal Wall Panels |
| 075419 | Polyvinyl-Chloride (PVC) Roofing |
| 077200 | Roof Accessories |
| 084413 | Glossed Aluminum Curtain Walls |
| 092300 | Cypsum Board |
| 095423 | Linear Metal Ceilings |
| 124813 | Entrance Floor Mats and Frames |
| 142100 | Electric Traction Elevators |

Sheet Notes

- All Architectural elevations and dimensions are based off of Level 1 = 0' - 0" = 4456.00'. See Civil and Structural drawings for actual elevations of structural elements and site grading.

Bid Documents

| Number | Revision | Date |
|--------|--------------|----------|
| 1 | Amendment #4 | 02/25/14 |
| | | |
| | | |
| | | |
| | | |
| | | |
| | | |
| | | |
| | | |
| | | |

CONSULTANTS:



ARCHITECT/ENGINEERS:
H+K ARCHITECTS
5485 Reno Corporate Drive, Suite 100
Reno, Nevada 89511-2262
P 775+332+6640
F 775+332+6642
hkarchitects.com



| | |
|----------------------------|------------------------|
| Drawings Title | Sections at West Stair |
| Approved: Project Director | |

| | | | |
|-----------------|------------------------------------|----------------|------------------|
| Project Title | VA Sierra Nevada Parking Structure | Project Number | 654-CSI-914 |
| Building Number | 16 | Drawing Number | AE511 |
| Location | 975 Kirman Ave., Reno, Nevada | Date | January 20, 2014 |
| Checked | MH | Drawn | JV, DG, JC |

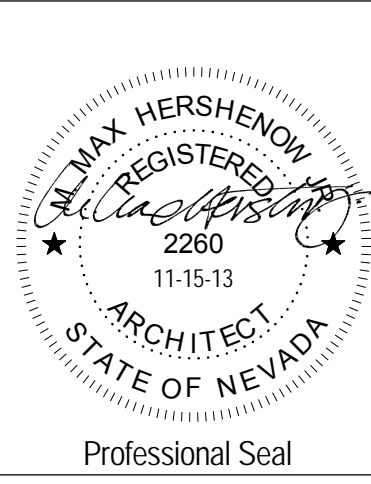
Office of
Construction
and Facilities
Management
 Department of
Veterans Affairs

three inches = one foot.
one and one half inches = one foot.
one inch = one foot.
three quarters inch = one foot.
one half inch = one foot.
three eighths inch = one foot.
one quarter inch = one foot.
one eighth inch = one foot.

25/20/14 4:15:10 PM C:\HK Local Projects\1206\1206\1206\VA Parking Garage Central - Joint.rvt

| Number | Revision | Date |
|--------|--------------|----------|
| 1 | Amendment #4 | 02/25/14 |
| | | |
| | | |
| | | |
| | | |
| | | |
| | | |
| | | |
| | | |
| | | |

CONSULTANTS:



ARCHITECT/ENGINEERS:
H+K ARCHITECTS
5485 Reno Corporate Drive, Suite 100
Reno, Nevada 89511-2262
P 775+332+6640
F 775+332+6642
hkarchitects.com



| | |
|----------------------------|------------------------|
| Drawings Title | Sections at West Stair |
| Approved: Project Director | |

| | |
|---------------|------------------------------------|
| Project Title | VA Sierra Nevada Parking Structure |
| Location | 975 Kirman Ave., Reno, Nevada |
| Date | January 20, 2014 |
| Checked | MH |
| Drawn | JV, DG, JC |

| | |
|-----------------|-------------|
| Project Number | 654-CS1-914 |
| Building Number | 16 |
| Drawing Number | AE513 |

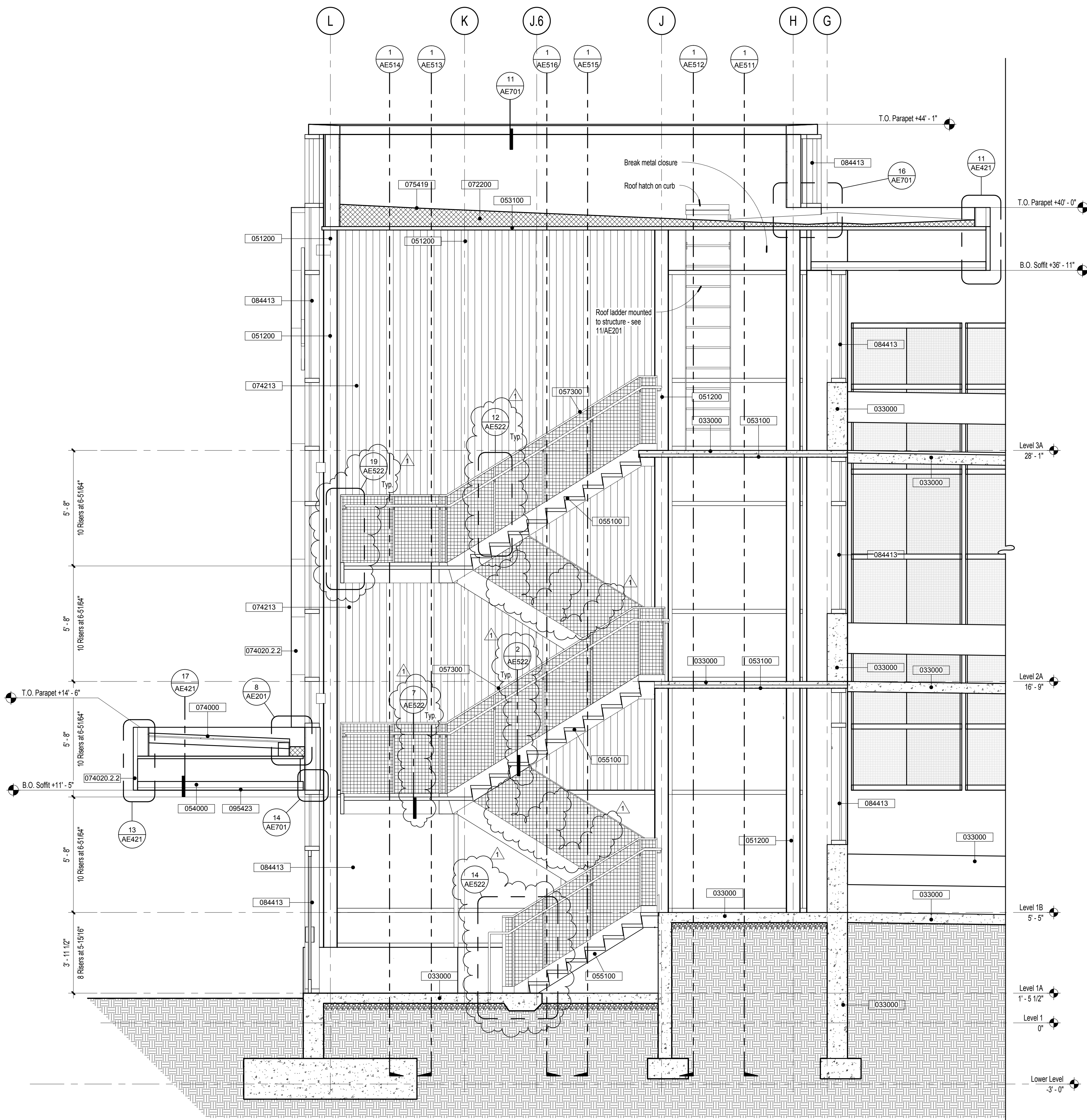
Office of
Construction
and Facilities
Management
 Department of
Veterans Affairs

Project Keynotes

| Keynote | Description |
|------------|---|
| 033000 | Cast-In-Place Concrete |
| 042000 | Unit Masonry |
| 051200 | Structural Steel Framing |
| 053100 | Steel Decking |
| 054000 | Cold-Formed Metal Framing |
| 055000 | Metal Fabrications |
| 055100 | Metal Stairs |
| 057300 | Decorative Metal Railings |
| 072200 | Roof and Deck Insulation |
| 074000 | Roofing and Siding Panels |
| 074020.2.2 | Insulated Metal Wall Panels |
| 074020.2.3 | Exterior Exposed Fastener Metal Wall Panels |
| 074213 | Metal Wall Panels |
| 075419 | Polyvinyl-Chloride (PVC) Roofing |
| 077200 | Roof Accessories |
| 084413 | Glossed Aluminum Curtain Walls |
| 092900 | Gypsum Board |
| 095423 | Linear Metal Ceilings |
| 124813 | Entrance Floor Mats and Frames |
| 142100 | Electric Traction Elevators |

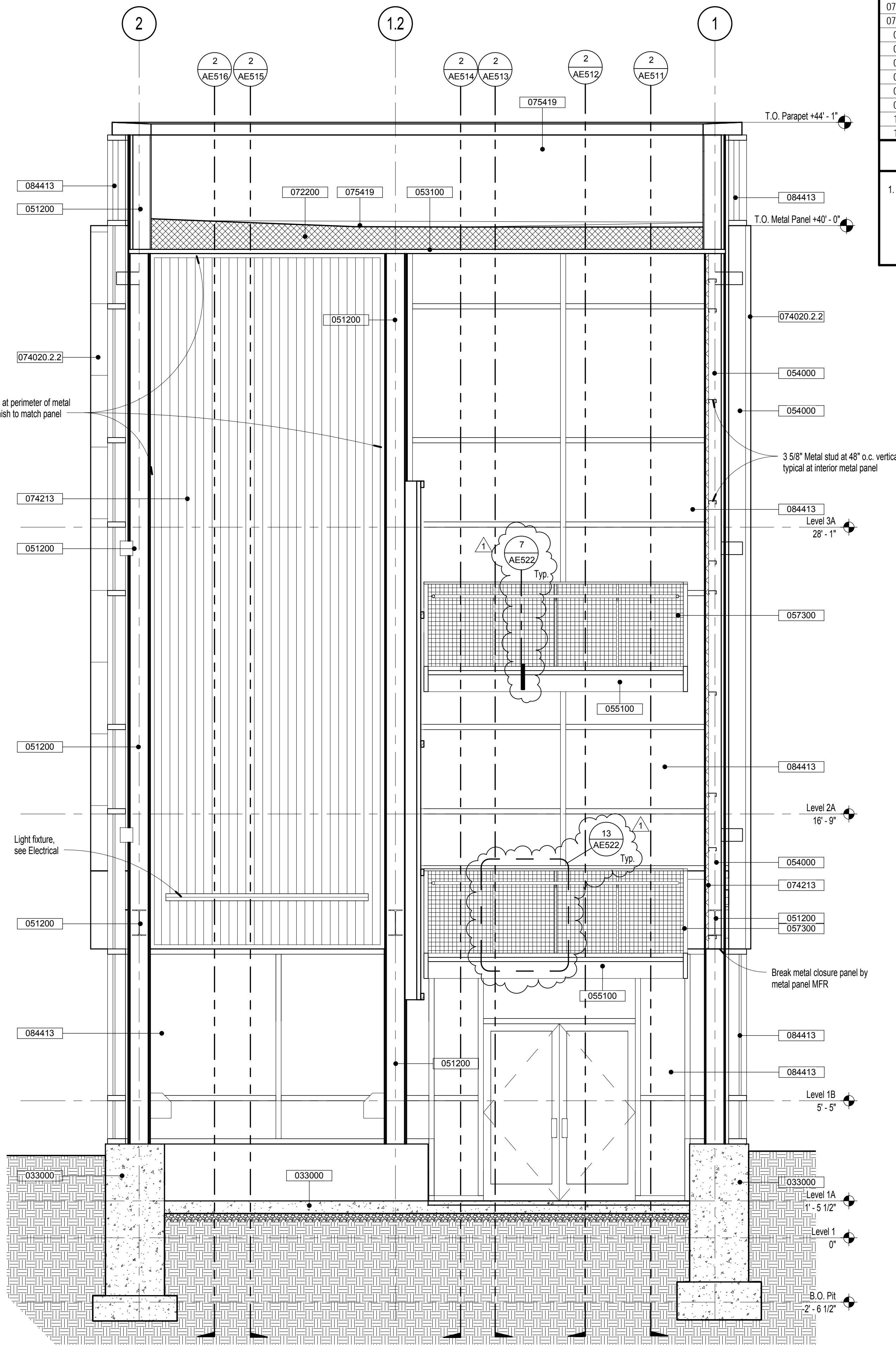
Sheet Notes

- All Architectural elevations and dimensions are based off of Level 1 = 0' - 0" = 4456.00'. See Civil and Structural drawings for actual elevations of structural elements and site grading.



2 West Stair Section

3/8" = 1'-0"



1 West Stair Section

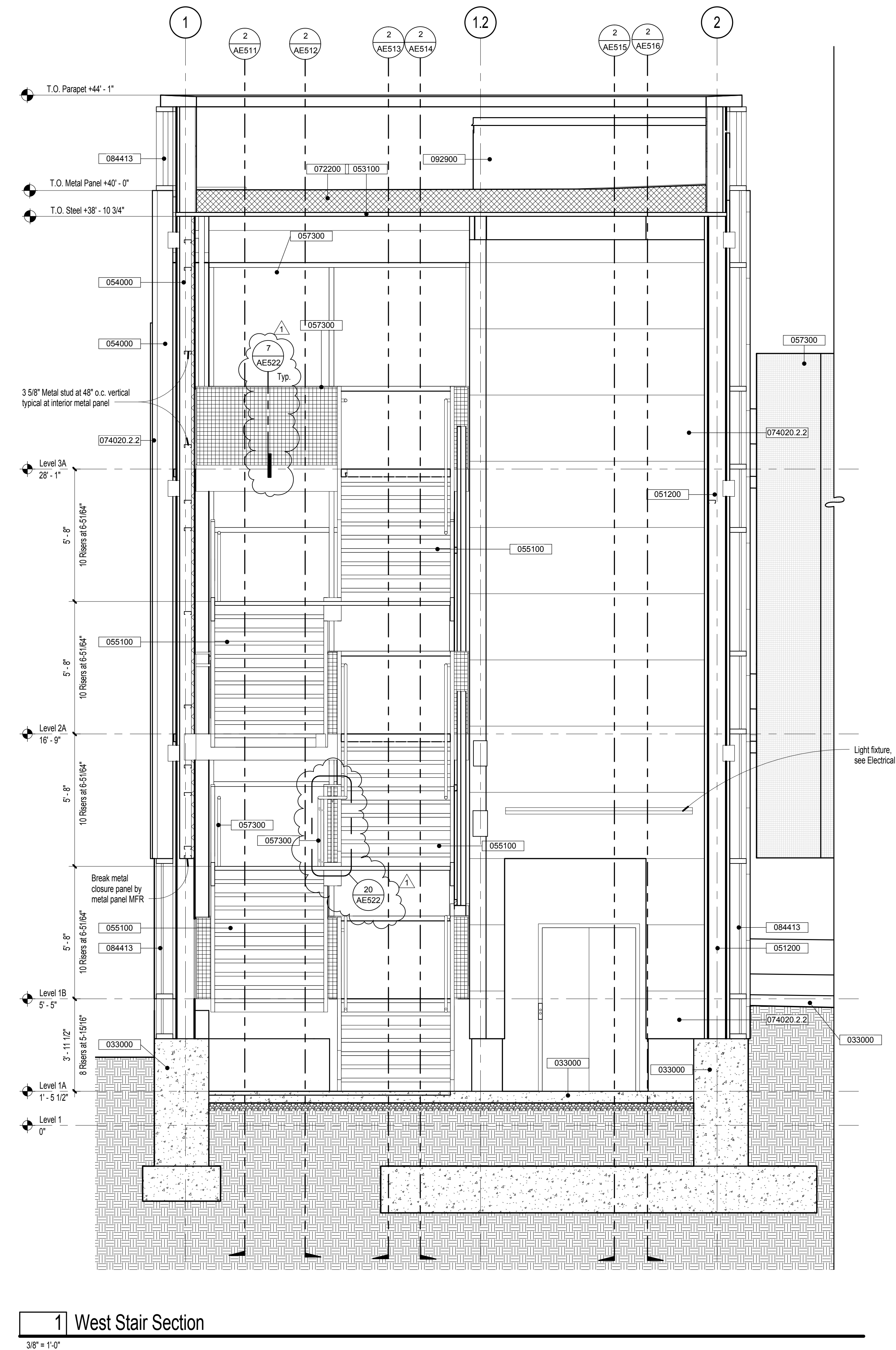
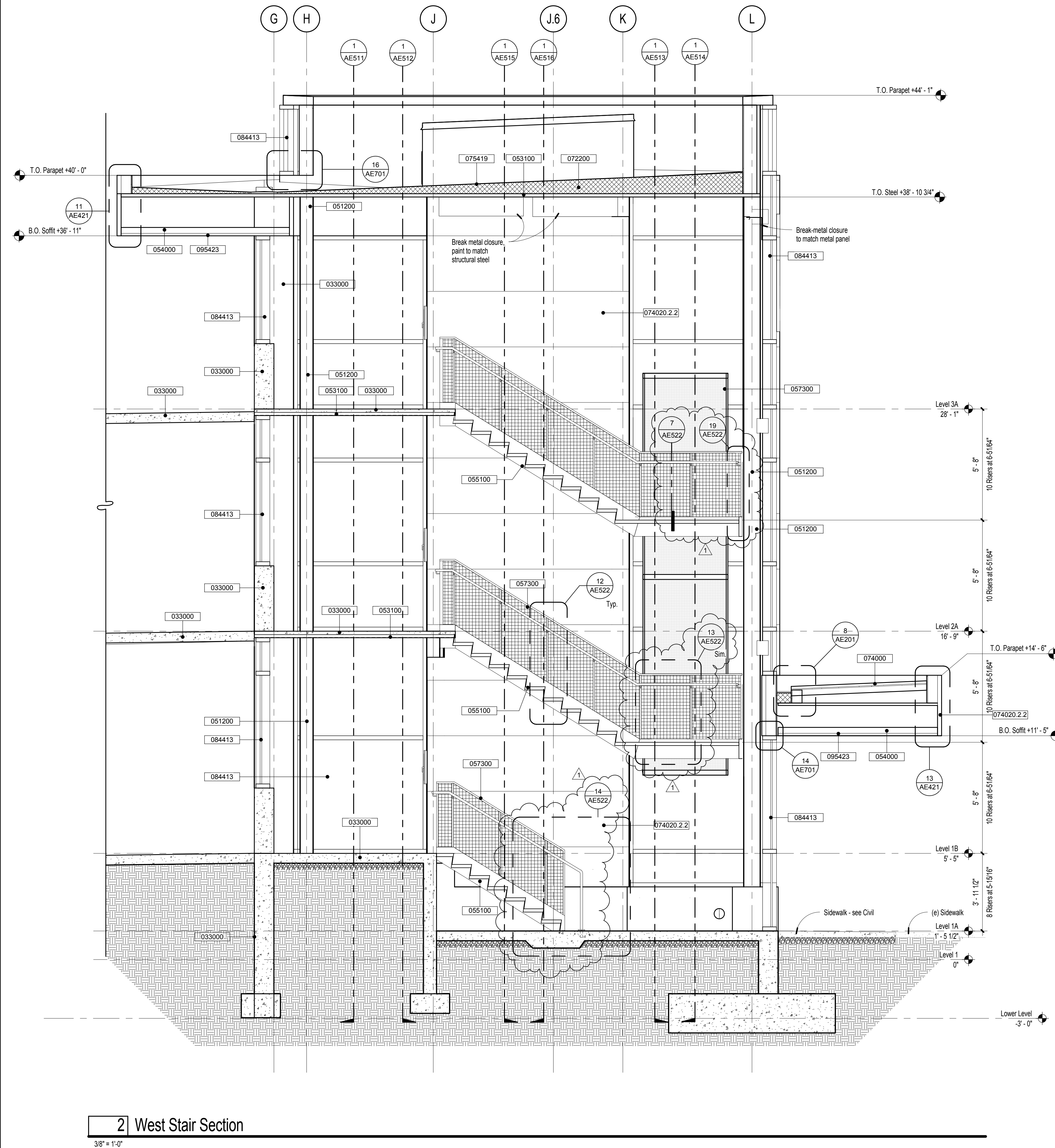
3/8" = 1'-0"

Bid Documents

| Keynote | Description |
|------------|---|
| 033000 | Cast-In-Place Concrete |
| 042000 | Unit Masonry |
| 051200 | Structural Steel Framing |
| 053100 | Steel Decking |
| 054000 | Cold-Formed Metal Framing |
| 055000 | Metal Fabrications |
| 055100 | Metal Stairs |
| 057300 | Decorative Metal Railings |
| 072200 | Roof and Deck Insulation |
| 074000 | Roofing and Siding Panels |
| 074020.2.2 | Insulated Metal Wall Panels |
| 074020.2.3 | Exterior Exposed Fastener Metal Wall Panels |
| 074213 | Metal Wall Panels |
| 075419 | Polyvinyl-Chloride (PVC) Roofing |
| 077200 | Roof Accessories |
| 084413 | Aluminum Curtain Walls |
| 092900 | Gypsum Board |
| 095423 | Gypsum Ceiling |
| 124813 | Entrance Floor Mats and Frames |
| 142100 | Electric Traction Elevators |

Sheet Notes

1. All Architectural elevations and dimensions are based off of Level 1 @ 0' - 0" = 4456.00'. See Civil and Structural drawings for actual elevations of structural elements and site grading.

[illegible]

CONSULTANTS:



ARCHITECT/ENGINEERS:

H+K ARCHITECTS

5485 Reno Corporate Drive, Suite 100
Reno, Nevada 89511-2262

P 775+332+6640
F 775+332+6642

hkarchitects.com

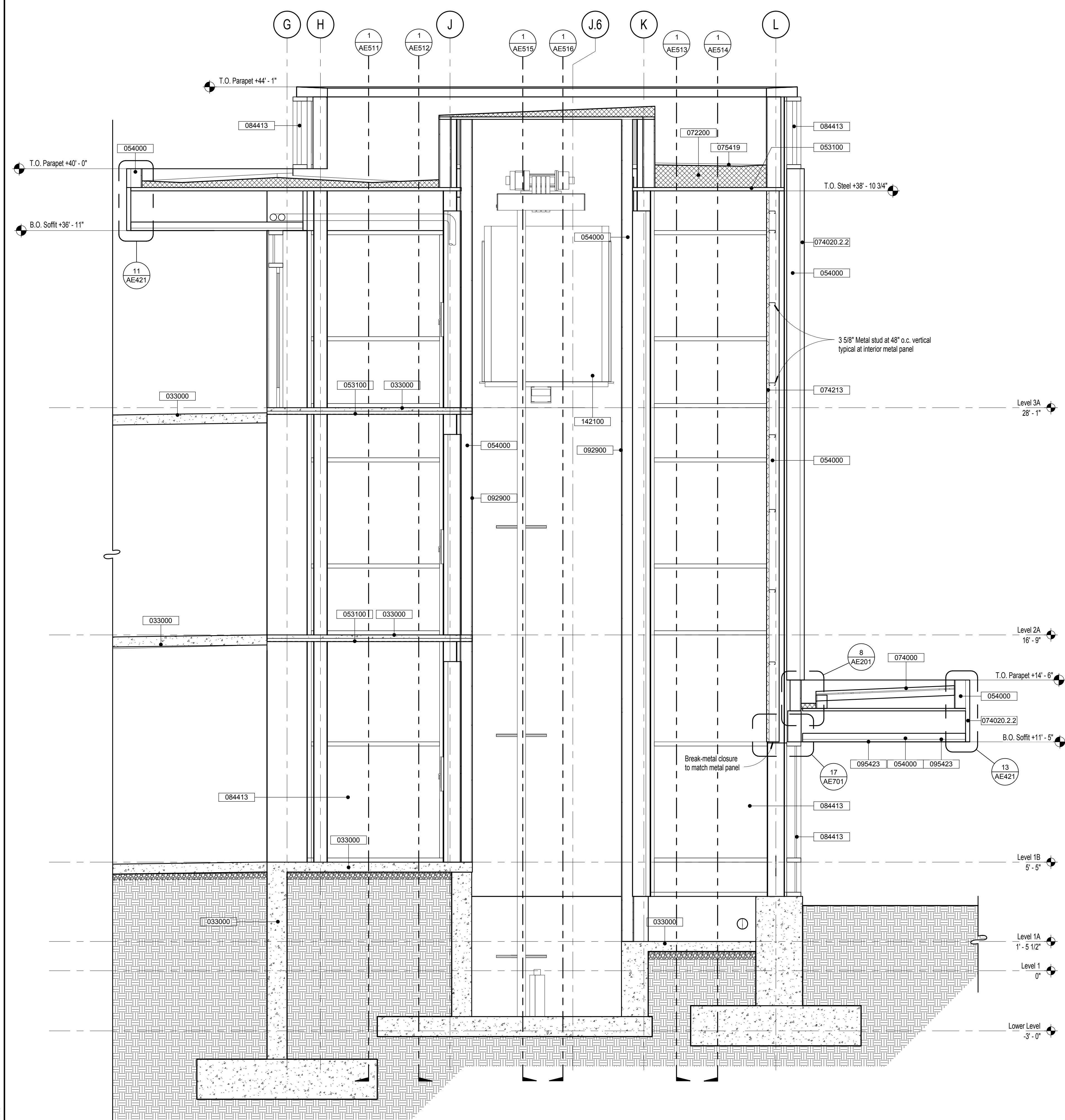
| | |
|----------------|------------------------|
| Drawings Title | Sections at West Stair |
|----------------|------------------------|

Bid Documents

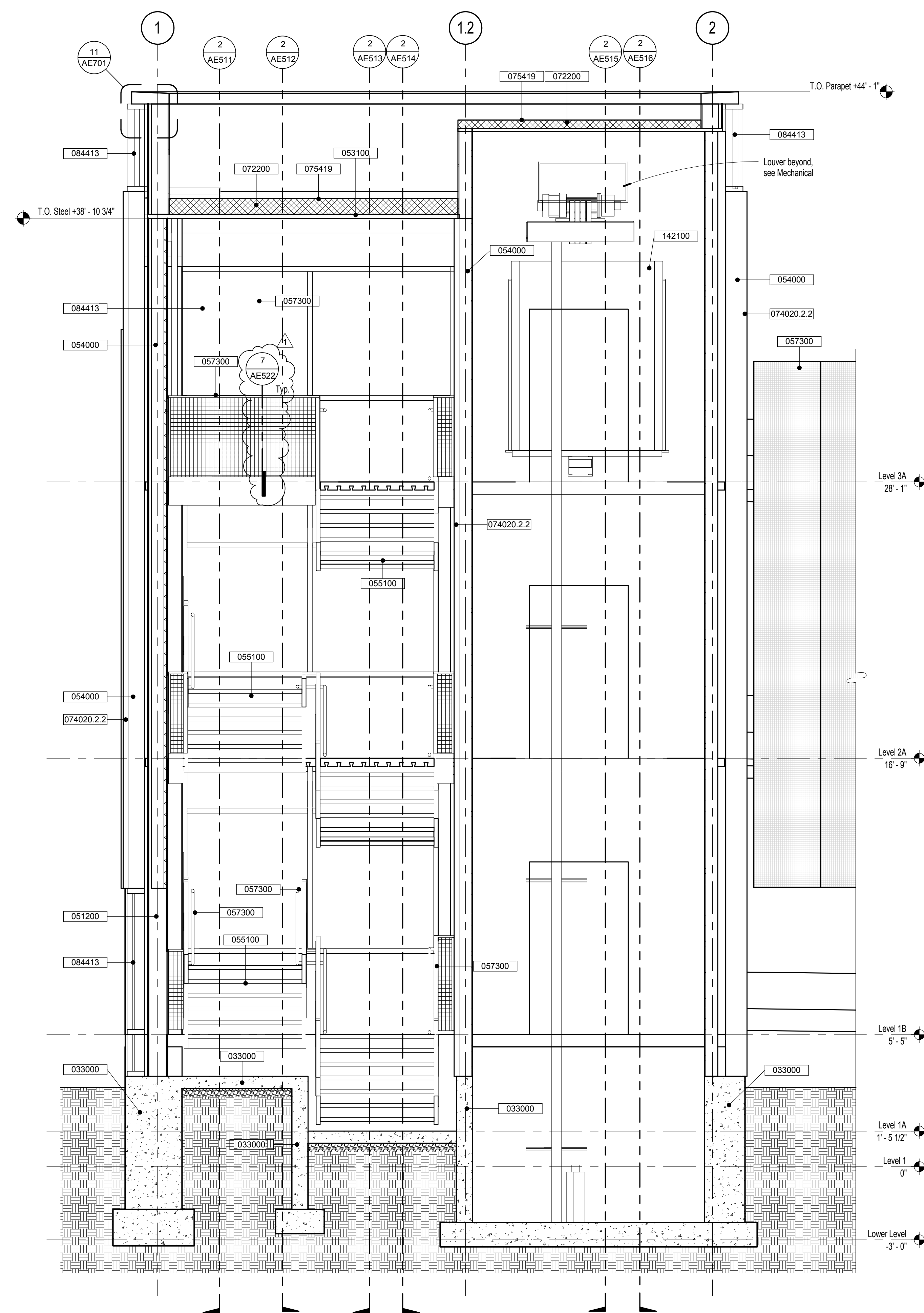
| Keynote | Description |
|------------|---|
| 033000 | Cast-In-Place Concrete |
| 042000 | Unit Masonry |
| 051200 | Structural Steel Framing |
| 053100 | Steel Decking |
| 054000 | Cold-Formed Metal Framing |
| 055000 | Metal Fabrications |
| 055100 | Metal Stairs |
| 057300 | Decorative Metal Railings |
| 072200 | Roof and Deck Insulation |
| 074000 | Roofing and Siding Panels |
| 074020.2.2 | Insulated Metal Wall Panels |
| 074020.2.3 | Exterior Exposed Fastener Metal Wall Panels |
| 074213 | Metal Wall Panels |
| 075419 | Polyvinyl-Chloride (PVC) Roofing |
| 077200 | Roof Accessories |
| 084413 | Aluminum Curtain Walls |
| 092900 | Gypsum Board |
| 095423 | Gypsum Ceiling |
| 124813 | Entrance Floor Mats and Frames |
| 142100 | Electric Traction Elevators |

Sheet Notes

1. All Architectural elevations and dimensions are based off of Level 1 @ 0' = 4456.00'. See Civil and Structural drawings for actual elevations of structural elements and site grading.



2 West Stair & Elevator Hoistway Section



1 West Stair & Elevator Hoistway Section

[illegible]

Bid Documents

one eighth inch = one foot
one quarter inch = one foot
three eighths inch = one foot
one half inch = one foot
three quarters inch = one foot
one inch = one foot
one and one half inches = one foot
three inches = one foot

2/25/2014 4:15:59 PM C:\HK\Load Project\1206\1206A\VA Parking Garage Central.dgn nvt

| Number | Revision | Date |
|--------|--------------|----------|
| 1 | Amendment #4 | 02/25/14 |
| | | |
| | | |
| | | |
| | | |
| | | |
| | | |
| | | |

CONSULTANTS:



ARCHITECT/ENGINEERS:
H+K ARCHITECTS
5485 Reno Corporate Drive, Suite 100
Reno, Nevada 89511-2262
P 775+332+6640
F 775+332+6642
hkarchitects.com

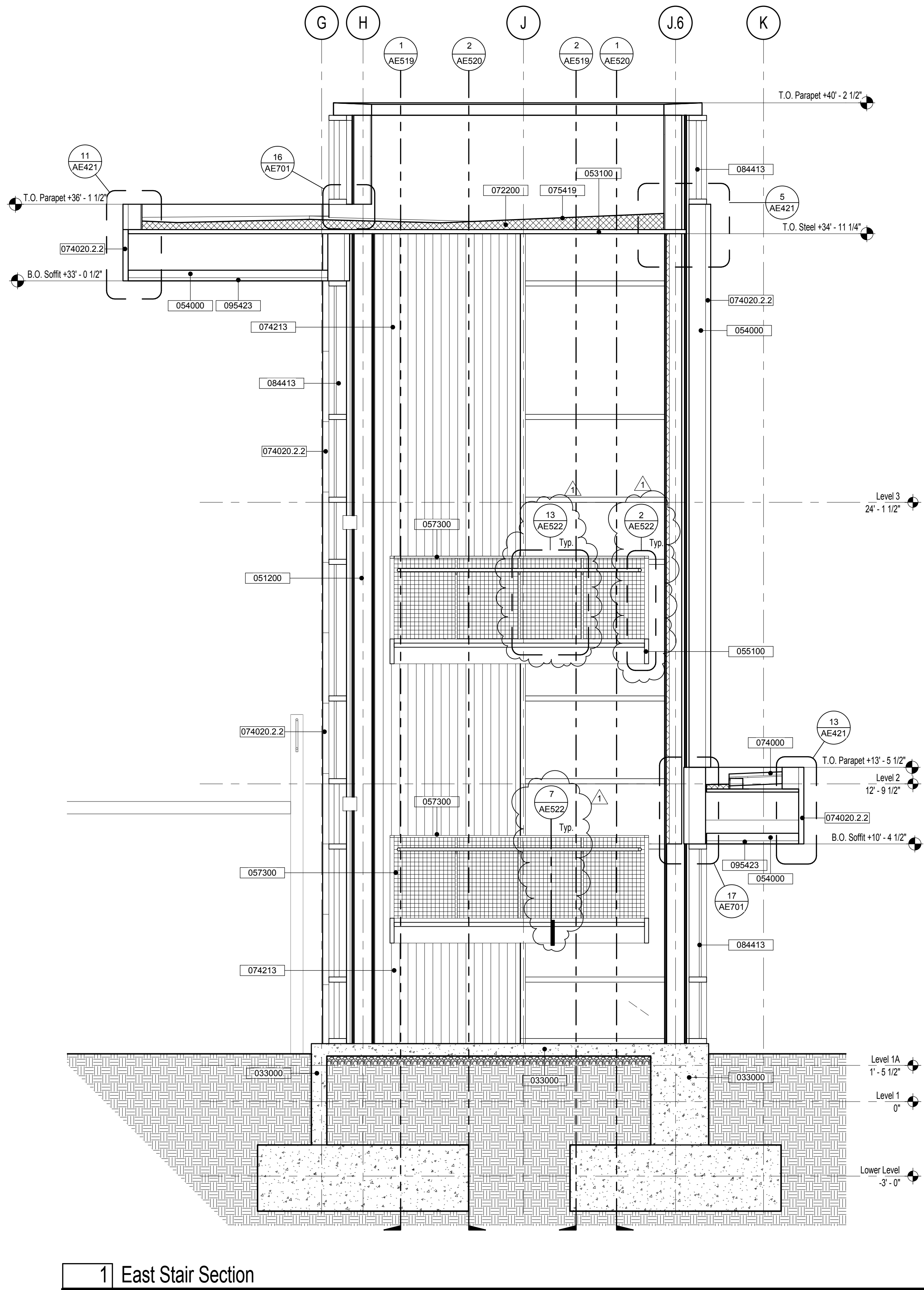
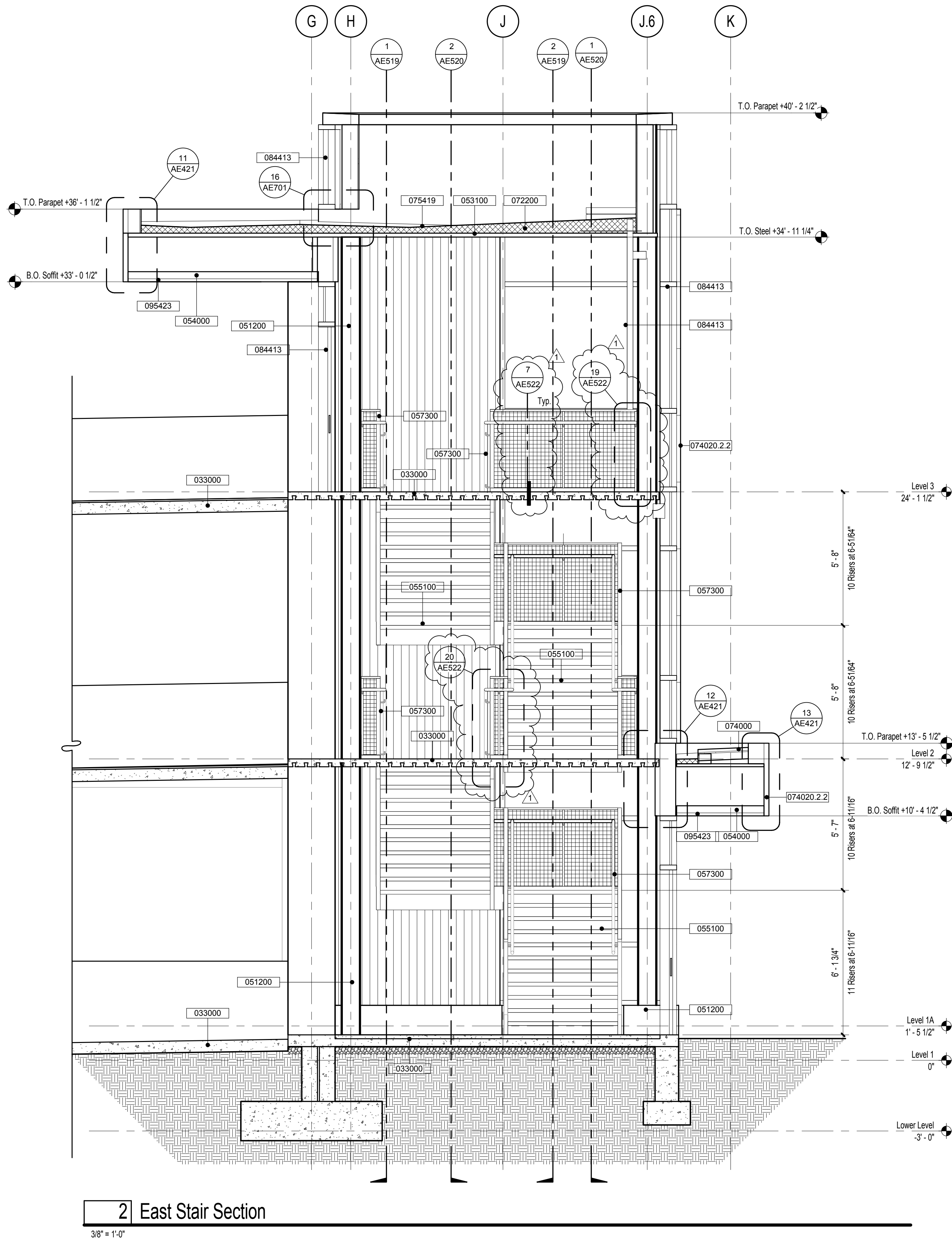


Drawings Title
Sections at East Stair
Approved: Project Director

Project Title
VA Sierra Nevada Parking Structure
Location
975 Kirman Ave., Reno, Nevada
Date
January 20, 2014
Checked
MH
Drawn
JV, DG, JC

Project Number
654-CSI-914
Building Number
16
Drawing Number
AE517

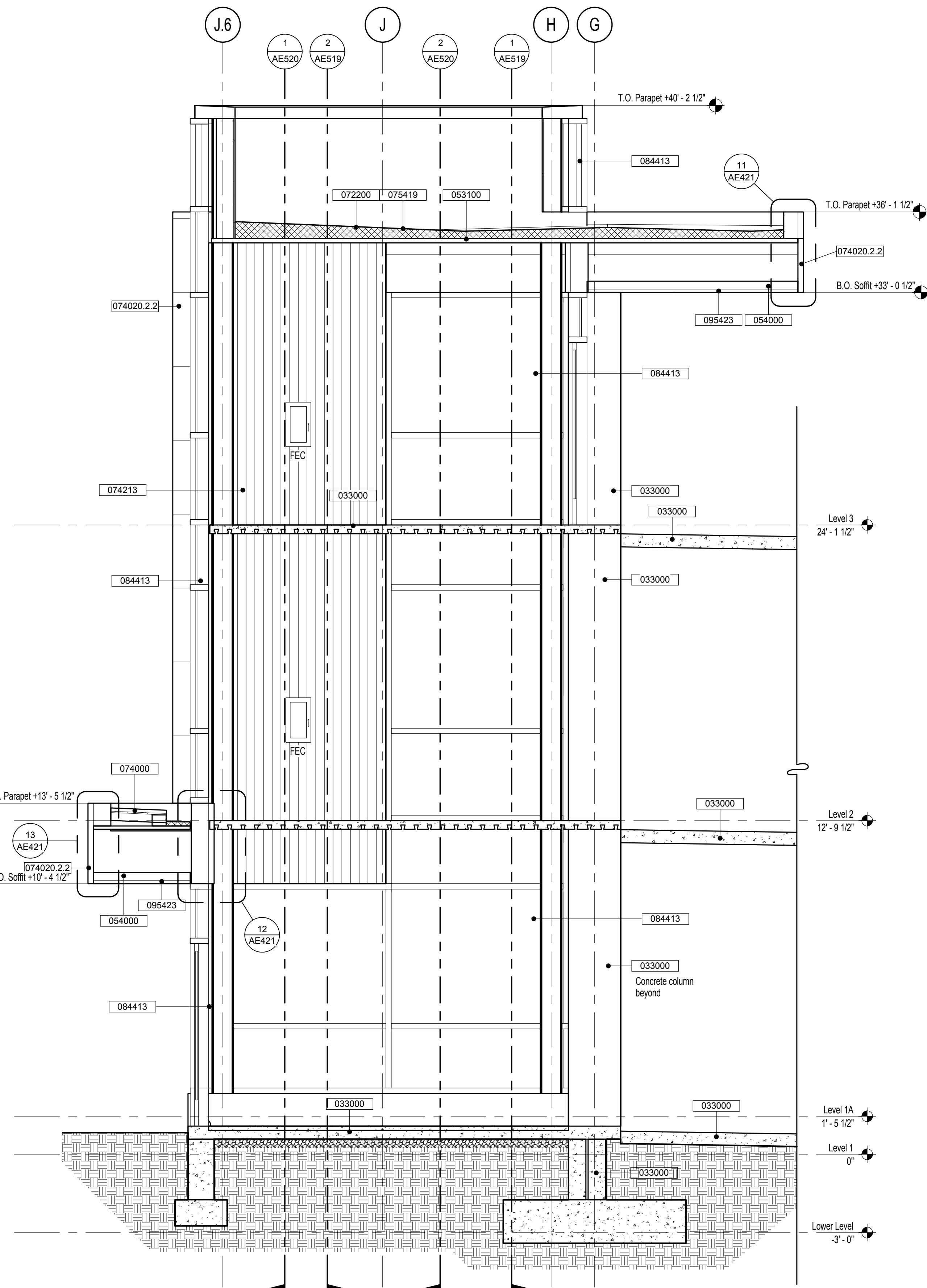
Office of
Construction
and Facilities
Management
Department of
Veterans Affairs



| Project Keynotes | |
|------------------|---|
| Keynote | Description |
| 033000 | Cast-In-Place Concrete |
| 042000 | Unit Masonry |
| 051200 | Structural Steel Framing |
| 053100 | Steel Decking |
| 054000 | Cold-Formed Metal Framing |
| 055000 | Metal Fabrications |
| 055100 | Metal Stairs |
| 057300 | Decorative Metal Railings |
| 072200 | Roof and Deck Insulation |
| 074000 | Roofing and Siding Panels |
| 074020.2.2 | Insulated Metal Wall Panels |
| 074020.2.3 | Exterior Exposed Fastener Metal Wall Panels |
| 074213 | Metal Wall Panels |
| 075419 | Polyvinyl-Chloride (PVC) Roofing |
| 077200 | Roof Accessories |
| 084413 | Glossed Aluminum Curtain Walls |
| 092900 | Gypsum Board |
| 095423 | Linear Metal Ceilings |
| 124813 | Entrance Floor Mats and Frames |
| 142100 | Electric Traction Elevators |

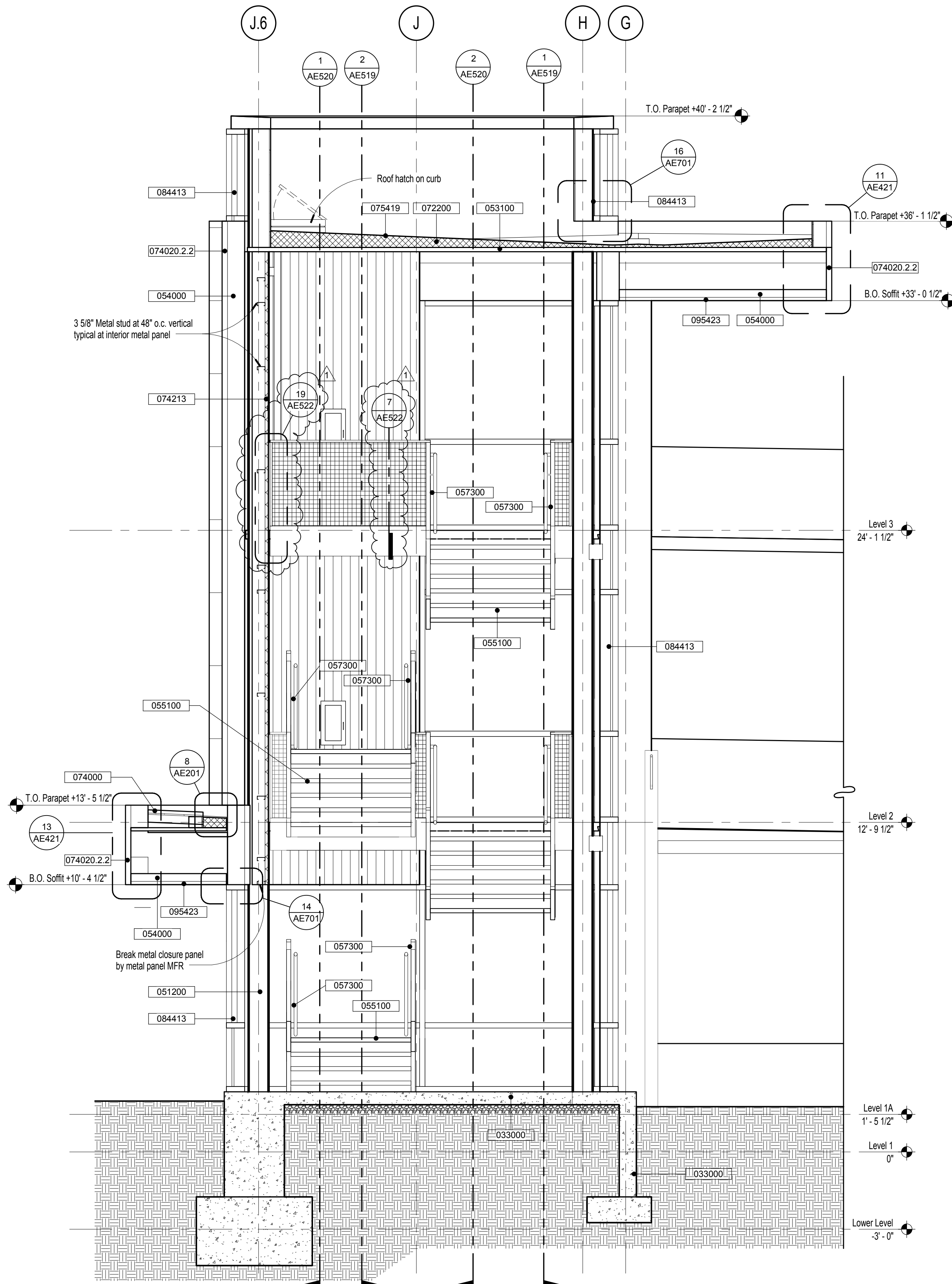
| Sheet Notes | |
|--|--|
| 1. All Architectural elevations and dimensions are based off of Level 1 = 0' - 0" = 4456.00'. See Civil and Structural drawings for actual elevations of structural elements and site grading. | |

one eighth inch = one foot
one quarter inch = one foot
one half inch = one foot
three eighths inch = one foot
three quarters inch = one foot
one inch = one foot
one and one half inches = one foot
three inches = one foot



2 East Stair Section

3/8" = 1'-0"



1 East Stair Section

3/8" = 1'-0"

Project Keynotes

| Keynote | Description |
|------------|---|
| 033000 | Cast-In-Place Concrete |
| 042000 | Unit Masonry |
| 051200 | Structural Steel Framing |
| 053100 | Steel Decking |
| 054000 | Cold-Formed Metal Framing |
| 055000 | Metal Fabrications |
| 055100 | Metal Stairs |
| 057300 | Decorative Metal Railings |
| 072200 | Roof and Deck Insulation |
| 074000 | Roofing and Siding Panels |
| 074020.2.2 | Insulated Metal Wall Panels |
| 074020.2.3 | Exterior Exposed Fastener Metal Wall Panels |
| 074213 | Metal Wall Panels |
| 075419 | Polyvinyl-Chloride (PVC) Roofing |
| 077200 | Roof Accessories |
| 084413 | Glossed Aluminum Curtain Walls |
| 092300 | Gypsum Board |
| 095423 | Linear Metal Ceilings |
| 124813 | Entrance Floor Mats and Frames |
| 142100 | Electric Traction Elevators |

Sheet Notes

- All Architectural elevations and dimensions are based off of Level 1 = 0' - 0" = 4450.00'. See Civil and Structural drawings for actual elevations of structural elements and site grading.

| Number | Revision | Date |
|--------|--------------|----------|
| 1 | Amendment #4 | 02/25/14 |
| | | |
| | | |
| | | |
| | | |
| | | |
| | | |
| | | |
| | | |
| | | |

CONSULTANTS:



ARCHITECT/ENGINEERS:
H+K ARCHITECTS
5485 Reno Corporate Drive, Suite 100
Reno, Nevada 89511-2262
P 775+332+6640
F 775+332+6642
hkarchitects.com

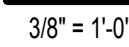
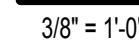


| | |
|----------------------------|------------------------|
| Drawings Title | Sections at East Stair |
| Approved: Project Director | |

| | | | |
|-----------------|------------------------------------|----------------|------------------|
| Project Title | VA Sierra Nevada Parking Structure | Project Number | 654-CSI-914 |
| Building Number | 16 | Drawing Number | AE518 |
| Location | 975 Kirman Ave., Reno, Nevada | Date | January 20, 2014 |
| Checked | MH | Drawn | JV, DG, JC |

Office of
Construction
and Facilities
Management





1. All Architectural elevations and dimensions are based off of Level 1 = 0' - 0" = 4456.00'. See Civil and Structural drawings for actual elevations of structural elements and site grading.

Office of
Construction
and Facilities
Management

 Department of
Veterans Affairs

