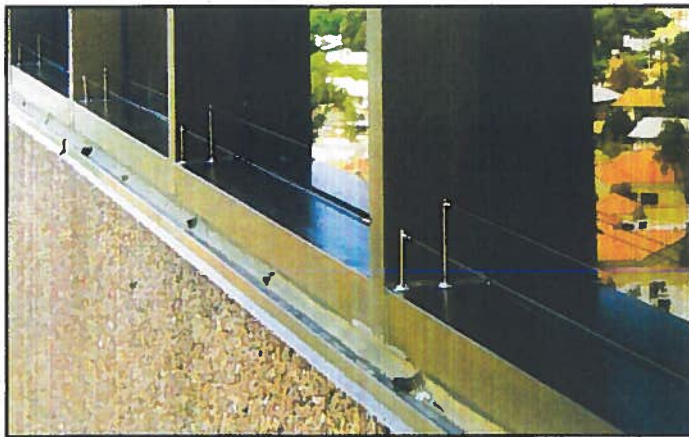


Bird Wire



Bird Wire installed on window ledges

Advantages & Benefits

- ▶ #1 Bird Wire system specified by architects!
CAD details and specifications available at www.birdbgone.com
- ▶ Low profile and low visibility!
- ▶ Low maintenance!
- ▶ Ideal for hand rails!
- ▶ Affordable pricing!
- ▶ Industry leading 5 year guarantee!
- ▶ Approved for use on federal and state government structures!
- ▶ Ideal for large birds such as pigeons, gulls and crows!



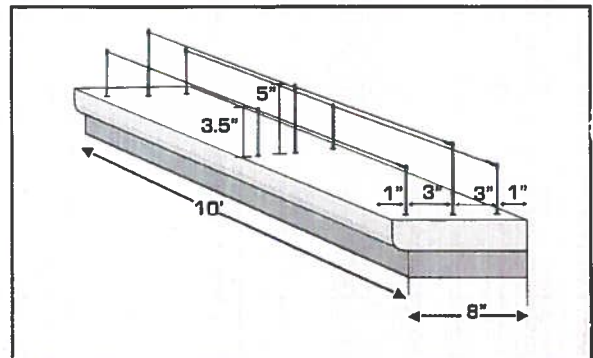
Custom Bird Wire brackets manufactured at Bird•B•Gone, installed on beams at the Orange County Convention Center, Orlando, FL.



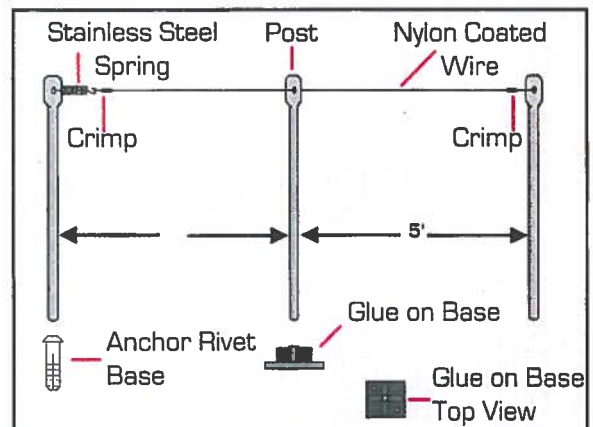
Industry Leading 5 Year Guarantee

Bird Species	Pigeons and seagulls
Where to Use	Ledges, signs, rooftops, curved or flat surfaces
Material	Stainless steel wire coated with U.V. stabilized clear nylon
Bird Pressure	Light to Medium
Warranty	5-Year

Bird Wire is a post and wire system that provides an unstable landing area for pigeons or seagulls. The Bird Wire system is low profile and ideal where aesthetics are a concern.



To install: Surface should be clean and dry before installation. Measure surface area to determine how many rows are required. Posts are placed every 5' with a new spring every 10'. Alternate post heights when installing multiple rows.



Bird Wire involves a series of stainless steel posts supporting nylon coated stainless steel wire. The wire is tensioned between the posts using springs to create an unstable landing surface.

Bird Wire

Nylon Coated Bird Wire



Bird Wire is strung between posts.

- ▶ 316 Stainless steel wire coated with U.V. stabilized clear nylon
- ▶ .045 mm 1 x 7 wire

BWNCW1	820' (249.94 m) Roll
BWNCW2	328' (99.97 m) Roll

Glue-On Bases



Glue-On Bases can be screwed or glued onto surfaces where drilling is not an option.

- ▶ U.V. protected glass filled nylon
- ▶ Support Bird Wire posts

BWB100	Gray Bases (100 per pack)
BWB050	Gray Bases (50 per pack)

Anchor Rivets



Anchor Rivets support Bird Wire posts when drilling into surface.

- ▶ Use 6.5 mm drill bit

BN10R	1" (25.4 mm) Anchor Rivet (100 per pack)
BN15R	1.5" (38.1 mm) Anchor Rivet (100 per pack)

Stainless Steel Posts



Stainless Steel Posts are used to suspend Bird Wire.

- ▶ 4 mm diameter, 316 marine grade stainless steel posts
- ▶ Ends are beveled to aid installation into either the anchor rivet or stick-on base

BWSSP60-100	6" (15.24 cm) Post (100 per pack)
BWSSP60-25	6" (15.24 cm) Post (25 per pack)
BWSSP50-100	5" (12.70 cm) Post (100 per pack)
BWSSP50-25	5" (12.70 cm) Post (25 per pack)
BWSSP45-100	4.5" (11.43 cm) Post (100 per pack)
BWSSP45-25	4.5" (11.43 cm) Post (25 per pack)
BWSSP35-100	3.5" (8.89 cm) Post (100 per pack)
BWSSP35-25	3.5" (8.89 cm) Post (25 per pack)

Nickel-Plated Copper Crimps



Copper Crimps are used to secure the end of the bird wire.

BWCC-100	Copper Crimps (100 per pack)
-----------------	------------------------------

3-Post Ridge Bracket



3-Post Ridge Bracket is designed for roof peaks and special installation areas.

BW3PRB	3-Post Ridge Bracket (each) (3) 3.5" (8.89 cm) posts
---------------	---

Stainless Steel Springs



Stainless Steel Springs make the Bird Wire unstable when birds land.

- ▶ 316 Grade Stainless Steel Springs
- ▶ Available in two sizes: Standard and Micro

BWSSS-100	Standard Springs (100 per pack)
BWSSS-50	Standard Springs (50 per pack)
BWMS1	Micro Springs (100 per pack)
BWMS1-5	Micro Springs (50 per pack)

Gutter & Girder Clamps



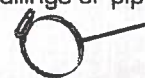
Used to attach the Bird Wire system to gutters or girders. Fits I-beams up to 3/4" (1.91 cm) thick.

BWBC00	Bird Wire Beam Clamp (10 per pack)
BWGC00	Bird Wire Gutter Clamp (10 per pack)

Railing Clamps

Used to attach the Bird Wire system to railings or pipes.

- ▶ Adjustable stainless steel clamps with 3.5" (8.89 cm) Bird Wire posts



Part #	Clamp Size	Size of Railing
BWRC-1	1" (2.54 cm) Clamp 1 Post (10 per pack)	3/4" - 1-1/4" (1.91 cm - 3.17 cm)
BWRC-2	2" (5.08 cm) Clamp 1 Post (10 per pack)	1-5/16" - 2-1/2" (3.33 cm - 6.35 cm)
BWRC-3	3" (7.62 cm) Clamp 1 Post (10 per pack)	2-9/16" - 3-1/2" (6.51 cm - 8.89 cm)
BWRC-4	4" (10.16 cm) Clamp 1 Post (10 per pack)	3-9/16" - 4-1/2" (9.05 cm - 11.43 cm)
BWRC-4/2	4" (10.16 cm) Clamp 2 Posts (10 per pack)	3-9/16" - 4-1/2" (9.05 cm - 11.43 cm)
BWRC2P-6	6" (15.24 cm) Clamp 2 Posts (10 per pack)	5-1/8" - 6" (13.01 cm - 15.24 cm)