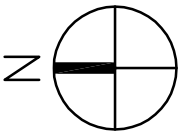
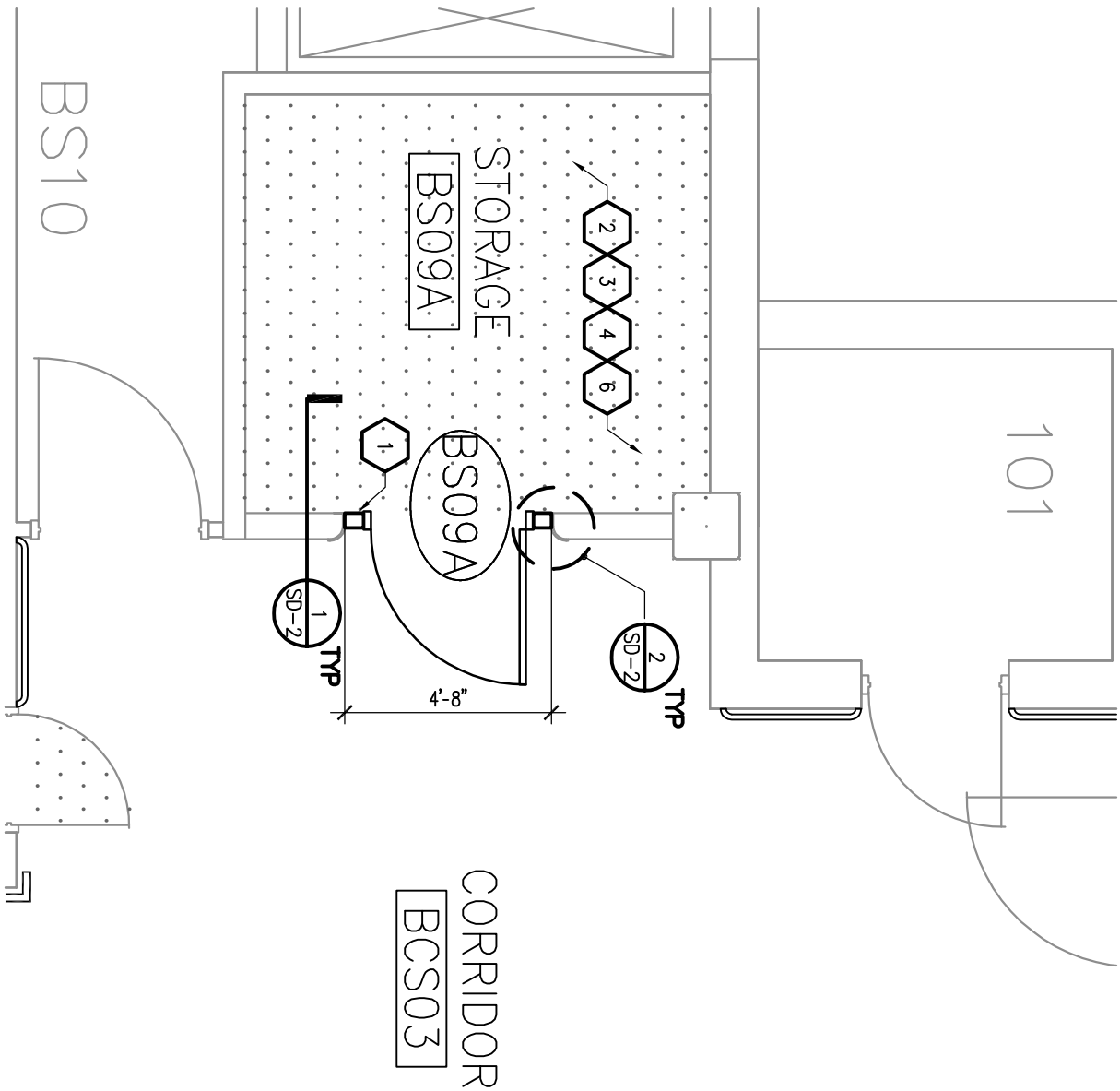


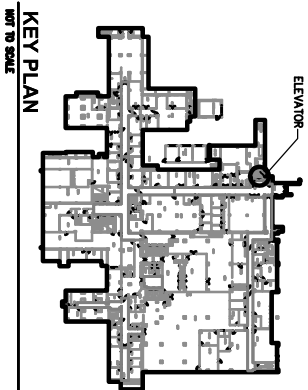
BASEMENT FLOOR PLAN, BS09A

CONSTRUCTION KEY NOTES

- NEW 3 5/8" METAL STUD WALL WITH 1 LAYER 5/8" GYPSUM BOARD EACH SIDE. FINISH AND PAINT WITH DIVINE WHITE SW6105 OR EQUIVALENT.
- NEW SUBFLOOR TO BE LEVEL WITH CORRIDOR BCS03. POUR NEW CONCRETE SLAB OVER VAPOR BARRIER PER SPECIFICATIONS AND DETAILS.
- PROVIDE 2 HR. GYPSUM ENCLOSURE AROUND EXPOSED STEEL OF SECOND FLOOR INFILL STRUCTURE.
- FIREPROOF EXISTING STRUCTURAL ANGLES AND PROVIDE SUSPENDED LIGHT FIXTURE.
- PROVIDE NEW UPRIGHT SPRINKLER HEAD(S) FOR STORAGE (BS09A), CONNECT BRANCH PIPING TO SPRINKLER MAIN IN CORRIDOR BCS03. ROOM SHALL BE CLASSIFIED AS ORDINARY HAZARD.
- PAINT EXISTING INTERIOR SURFACE (CMU, BRICK OR CLAY TILE) WITH SW6105 DIVINE WHITE OR EQUIVALENT.



BASEMENT FLOOR PLAN, BS09A



KEY PLAN
NOT TO SCALE



SHIVEHATTERY
ARCHITECTURE+ENGINEERING

Iowa | Illinois | Indiana | Missouri
<http://www.shive-hattery.com>
ILLINOIS FIRM NUMBER: 184-000214

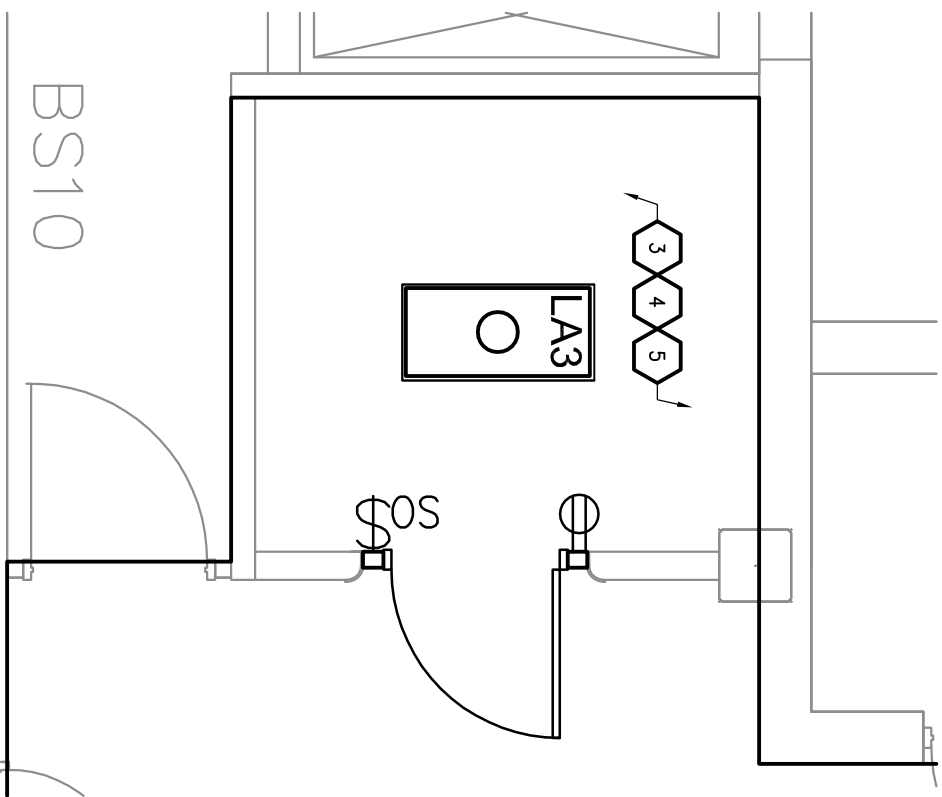
CONSTRUCT BUILDING AND
SHAFT FALL PROTECTION
IOWA CITY, IA

DATE	02-28-2014	SCALE
DRAWN	EAS	APPROVED DRH
REFERENCE DRAWING		FIELD BOOK
		REVISION

PROJECT NO.
112235-0

ISSUED FOR
ADD 1

SD-1a

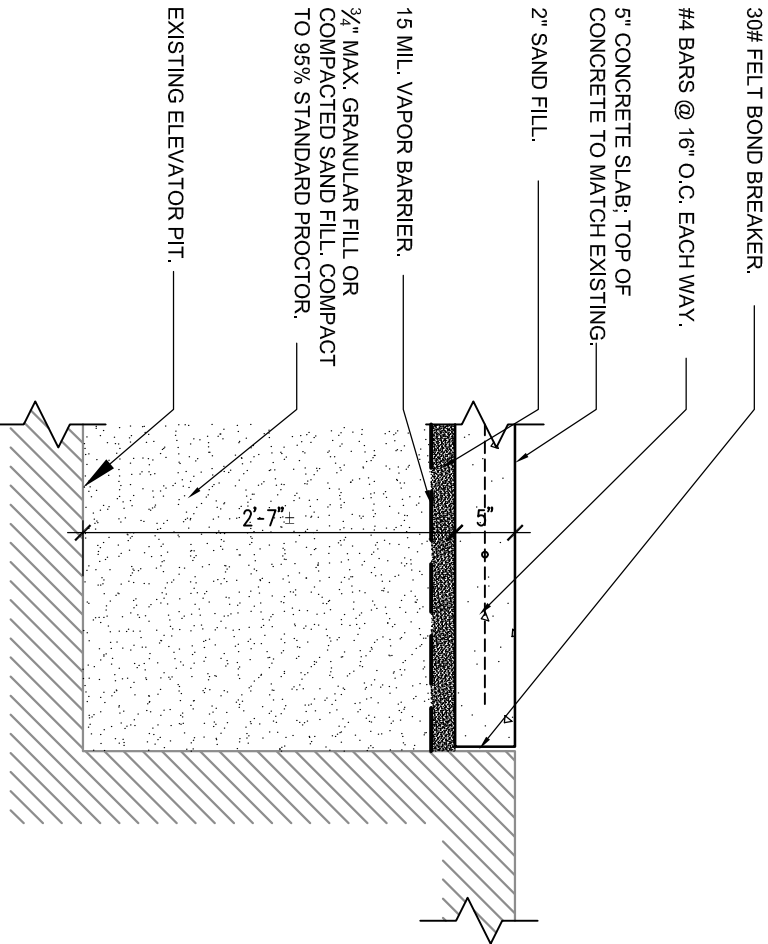


**BASEMENT REFLECTED
CEILING PLAN, BS09A**

BASEMENT REFLECTED CEILING PLAN, BS09A

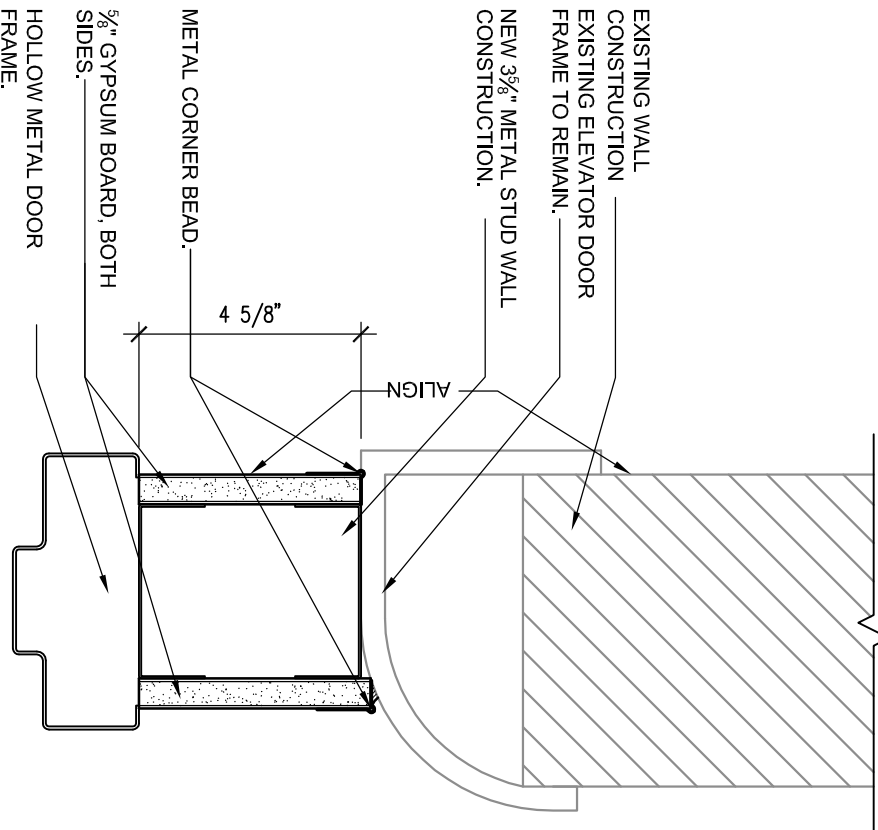
CONSTRUCTION KEY NOTES

- 1 NEW 3 3/8" METAL STUD WALL WITH 1 LAYER 5/8" GYPSUM BOARD EACH SIDE. FINISH AND PAINT WITH DIVINE WHITE SW6105 OR EQUIVALENT.
- 2 NEW SUBFLOOR TO BE LEVEL WITH CORRIDOR BCS03. POUR NEW CONCRETE SLAB OVER VAPOR BARRIER PER SPECIFICATIONS AND DETAILS.
- 3 PROVIDE 2 HR. GYPSUM ENCLOSURE AROUND EXPOSED STEEL OF SECOND FLOOR INFILL STRUCTURE.
- 4 FIREPROOF EXISTING STRUCTURAL ANGLES AND PROVIDE SUSPENDED LIGHT FIXTURE.
- 5 PROVIDE NEW UPRIGHT SPRINKLER HEAD(S) FOR STORAGE (BS09A), CONNECT BRANCH PIPING TO SPRINKLER MAIN IN CORRIDOR BCS03. ROOM SHALL BE CLASSIFIED AS ORDINARY HAZARD.
- 6 PAINT EXISTING INTERIOR SURFACE (CMU, BRICK OR CLAY TILE) WITH SW6105 DIVINE WHITE OR EQUIVALENT.



ELEVATOR PIT DETAIL

ELEVATOR JAMB DETAIL



DOOR AND FRAME SCHEDULE										
DOOR NO	DOOR				FRAME			RATING	HDWR	REMARKS
	SIZE		MTRL	TYPE	GLAZ	MTRL	TYPE			
	WD	HT								
BS09A	3'-6"	7'-0"	METAL	F	--	HM	A	60		PROVIDE STOREROOM LOCKSET AND CLOSER

LIGHTING FIXTURE SCHEDULE (NOT ALL USED—SEE PLAN)									
PLAN MARK	MANUFACTURER AND MODEL NUMBER	LAMPS		INPUT WATTS	BALLAST	VOLTS	MOUNTING	MOUNTING HEIGHT	DESCRIPTION
		#/FIXT	WATTAGE TYPE						
LA3	DAYBRITE # 2DPG 232 UNV PAF EB95 GLR1	2	F32.T8 SPX 4100K,	49	<div>1</div>	120/ 277	RE	N/A	2X4 MID-DEPTH TROFFER WITH 2 LAMPS. PRISMATIC ACRYLIC LENS. SPRING LOADED LATCHES ON FLAT STEEL DOOR FRAME.
		32							
	OR APPROVED EQUAL								

LIGHTING FIXTURE SCHEDULE KEYNOTES:

- 1** ELECTRONIC PROGRAMMED START BALLAST WITH .98 MINIMUM BALLAST FACTOR, 10% OR LESS THD. USE GE T5 HIGH EFFICIENCY PROGRAMMED START.