

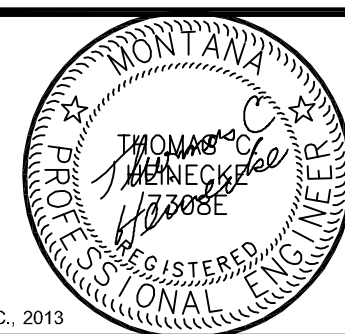
REVISIONS			
NO.	DESCRIPTION	DATE	BY
1	PIPE PENETRATIONS	12/6/13	JMW
2	PIPE & FLR LOCATIONS	12/12/13	JMW



Engineers
Surveyors
Scientists
Planners

125 Schoolhouse Loop
Kalispell, MT 59901
Phone: (406) 752-2216
Fax: (406) 752-2391

COPYRIGHT © MORRISON-MAIERLE, INC., 2013



DRAWN BY: PNP
CHK'D. BY: TWR
APPR. BY: TCH
DATE: 05/2013
Q.A. REVIEW
BY:
DATE:

MILES CITY

MILES CITY ASBESTOS ABATEMENT

MONTANA

FIRST FLOOR BUILDINGS 1, 8 & 20 COMPOSITE
ASBESTOS-CONTAINING MATERIALS & PHASING PLAN

PROJECT NUMBER

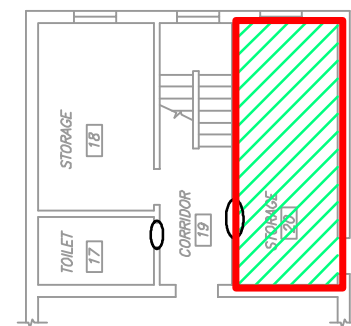
5281.001

SHEET NUMBER

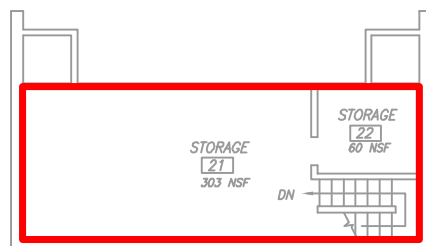
1

DRAWING NUMBER

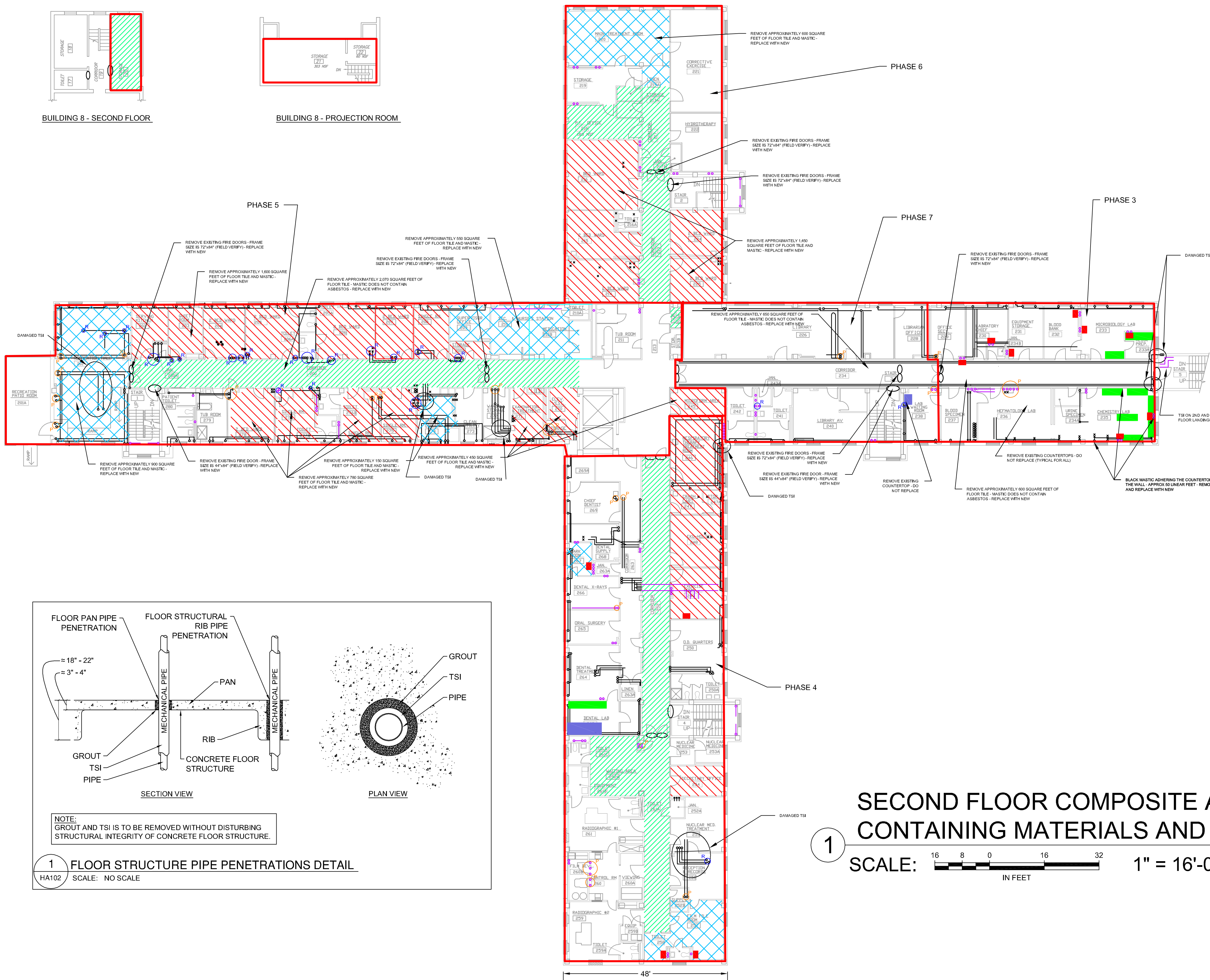
HA101



BUILDING 8 - SECOND FLOOR



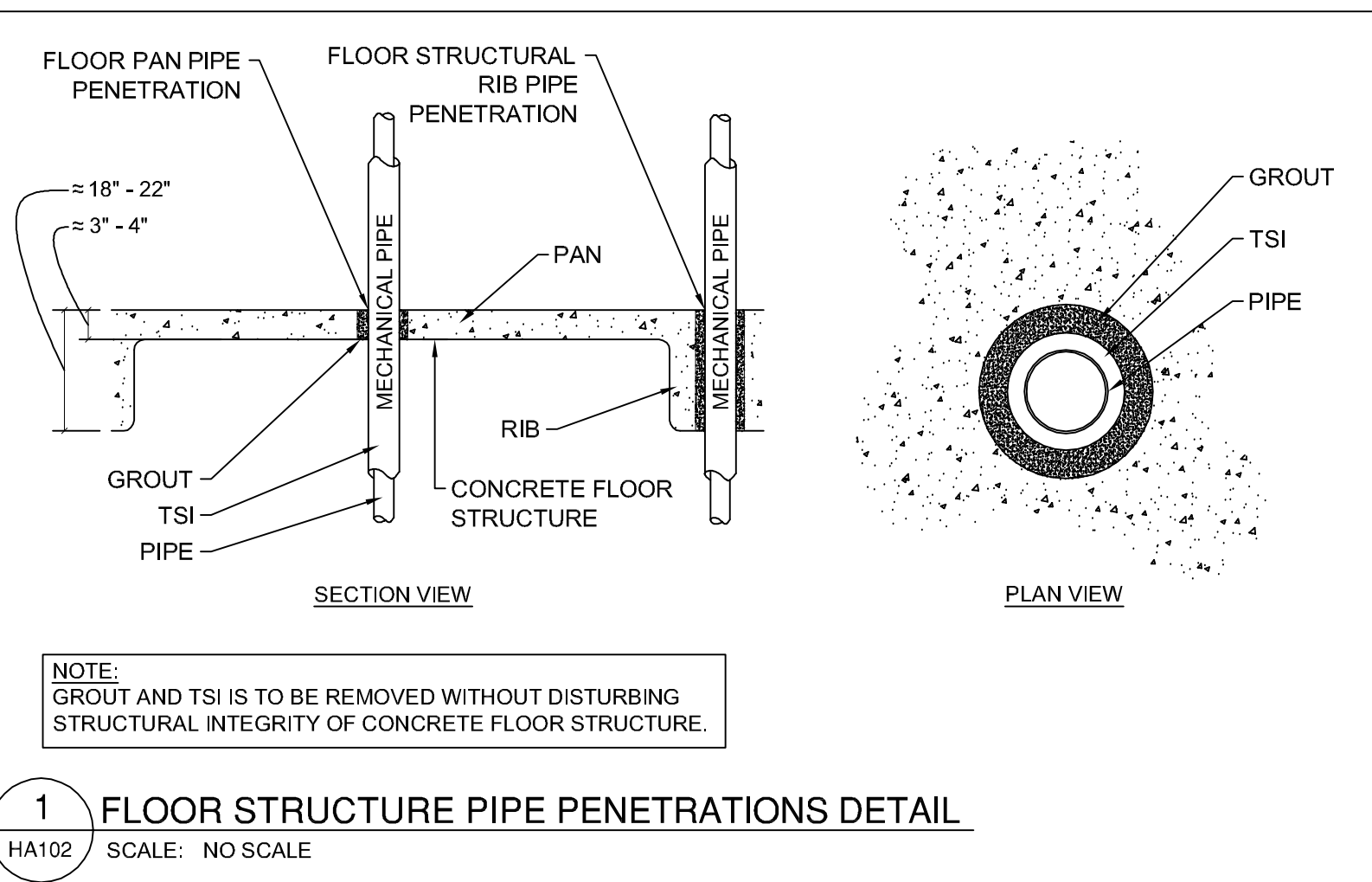
BUILDING 8 - PROJECTION ROOM



LEGEND	
FLOORING	
	CONFIRMED RESILIENT FLOORING LOCATIONS (VARIOUS), RACM.
	CONFIRMED MASTIC FLOORING LOCATIONS (VARIOUS), RACM.
	CONFIRMED RESILIENT FLOORING/MASTIC COMBO LOCATIONS (VARIOUS), RACM.

LEGEND	
	BLACK TRANSITE-LIKE COUNTERTOPS (X2.2), IN PLACE NON-FRIABLE.
	BLACK MASTIC ADHERING COUNTERTOPS TO BASE & WALL (M-8.3), IN PLACE NON-FRIABLE.
	PANEL MASTIC
	GRAY TRANSITE PANELS FOR COUNTERTOPS & SHELVES (X2.1), IN PLACE NON-FRIABLE.
	GRAY "POPCORN" STYLE SINK UNDERCOAT (X7.6), IN PLACE NON-FRIABLE
	FIRE DOOR, ASSUMED TO CONTAIN RACM INSULATION (I7.1), NON-FRIABLE.
	PHASE BOUNDARY

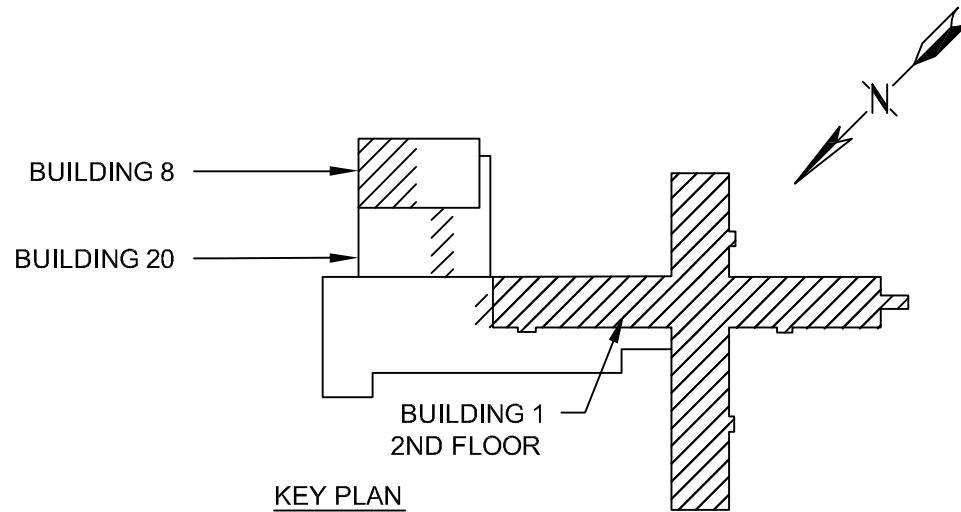
LEGEND	
	HORIZONTAL THERMAL SYSTEM INSULATION (TSI) ON PIPING (14.1 OR 14.2), BOTH RACM.
	VERTICAL TSI TO FLOOR ABOVE (14.1 OR 14.2), BOTH RACM.
	FLOOR STRUCTURAL RIB PIPE PENETRATION TO FLOOR ABOVE (SEE DETAIL 1 HA102)
	FLOOR PAN PIPE PENETRATION TO FLOOR ABOVE (SEE DETAIL 1 HA102)
	ADDITIONAL PIPE
MUDDED JOINT FITTINGS (MJF'S ON THERMAL SYSTEM FITTINGS (13.1), RACM.	
	FREE STANDING MJF.
	VERTICAL TSI WITH MJF.
	HORIZONTAL CONFLUENCE MJF.
	VERTICAL CONFLUENCE MJF.
NOTES	
A. LOCATIONS ARE APPROXIMATE. B. NOT ALL CEILING AREAS AND PIPE CHASES WERE ACCESSIBLE. C. FIBERGLASS INSULATION WAS OBSERVED IN MANY AREAS BUT IS NOT ILLUSTRATED HERE.	



SECOND FLOOR COMPOSITE ASBESTOS CONTAINING MATERIALS AND PHASING PLAN

SCALE: 1" = 16'-0"

BID DOCUMENTS



REVISIONS			
NO.	DESCRIPTION	DATE	BY
1	PIPE PENETRATIONS	12/6/13	JMW
2	PIPE & FLR LOCATIONS	12/12/13	JMW

VCI Program, Project and Construction Management

MORRISON MAIERLE, INC.
An Employee-Owned Company

Engineers
Surveyors
Scientists
Planners

125 Schoolhouse Loop
Kalspell, MT 59901
Phone: (406) 752-2216
Fax: (406) 752-2391



DRAWN BY: PNP
CHK'D. BY: TWR
APPR. BY: TCH
DATE: 05/2013
Q.A. REVIEW
BY:
DATE:

MILES CITY

MILES CITY ASBESTOS ABATEMENT

MONTANA

SECOND FLOOR COMPOSITE ASBESTOS-CONTAINING MATERIAL & PHASING PLAN

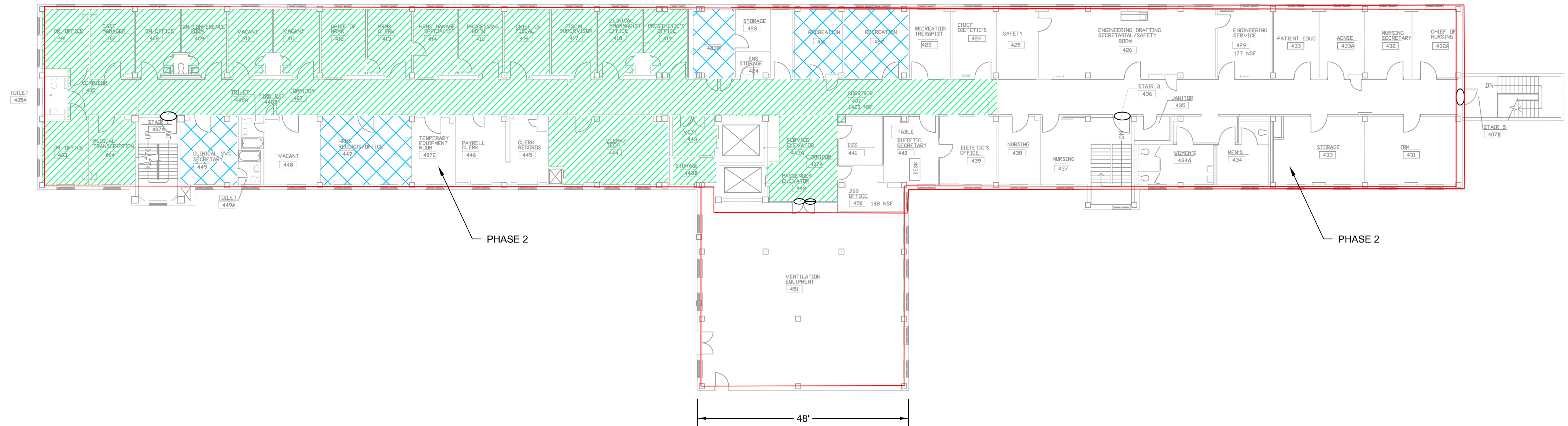
PROJECT NUMBER
5281.001

SHEET NUMBER
2

DRAWING NUMBER
HA102

COPYRIGHT © MORRISON-MAIERLE, INC., 2013

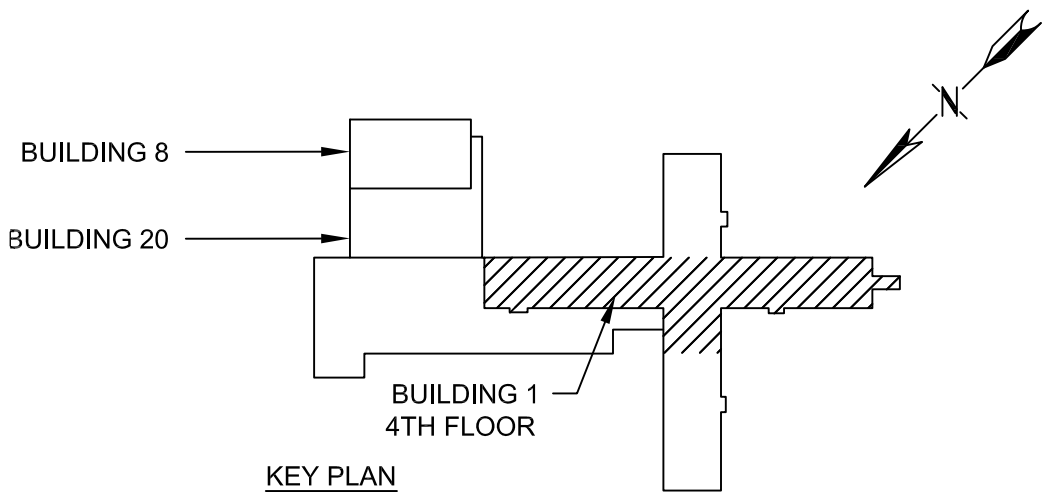
VERIFY SCALE!
THESE PRINTS MAY BE
REDUCED. LINE BELOW
MEASURES ONE INCH ON
ORIGINAL DRAWING.
MODIFY SCALE ACCORDINGLY!



1 FOURTH FLOOR COMPOSITE ASBESTOS CONTAINING MATERIALS AND PHASING PLAN
SCALE: 16 8 0 16 32 1" = 16'-0"
IN FEET

LEGEND	
FLOORING	
	CONFIRMED RESILIENT FLOORING LOCATIONS (VARIOUS). RACM.
	CONFIRMED MASTIC FLOORING LOCATIONS (VARIOUS). RACM.
	CONFIRMED RESILIENT FLOORING/MASTIC COMBO LOCATIONS (VARIOUS). RACM.
	ASSUMED ACM FLOORING MATERIALS.

LEGEND	
	THICK, MASTIC-LIKE BLACK SINK UNDERCOAT (X7.5). IN PLACE NON-FRIABLE.
	FIRE DOOR. ASSUMED TO CONTAIN RACM INSULATION (I7.1). NON-FRIABLE.
	PHASE BOUNDARY



CONSTRUCTION DOCUMENTS

REVISIONS			
NO.	DESCRIPTION	DATE	BY



Engineers
Surveyors
Scientists
Planners

125 Schoolhouse Loop
Kalispell, MT 59901
Phone: (406) 752-2216
Fax: (406) 752-2391



DRAWN BY: PNP
CHK'D. BY: TWR
APPR. BY: TCH
DATE: 05/2013
Q.A. REVIEW
BY: _____
DATE: _____

MILES CITY ASBESTOS ABATEMENT
MILES CITY MONTANA
FOURTH FLOOR COMPOSITE ASBESTOS-CONTAINING MATERIALS & PHASING PLAN

PROJECT NUMBER
5281.001
SHEET NUMBER
4
DRAWING NUMBER
HA104

BUILDING 8 - 2nd FLOOR

PHASE 13 - BLDG 8

PHASE 13 - BLDG 8

PHASE 14 - BLDG 20

PHASE 8 - BLDG 1

PHASE 8 - BLDG 1

BUILDING 8 - BASEMENT

PHASE 13 - BLDG 8

PHASE 9 - BLDG 1

PHASE 15 - BLDG 1

PHASE 14 - BLDG 1

PHASE 12 - BLDG 1

PHASE 11 - BLDG 1

PHASE 16 - BLDG 1

PHASE 10 - BLDG 1

MIDDLE LANDING

VERIFY SCALE!

THESE PRINTS MAY BE
REDUCED. LINE BELOW
MEASURES ONE INCH ON
ORIGINAL DRAWING.

MODIFY SCALE ACCORDINGLY!

PLAN
NORTH

LEGEND

- O HORIZONTAL THERMAL SYSTEM INSULATION (TSI) ON PIPING (14.1 OR 14.2). BOTH RACM.
- O^R VERTICAL TSI TO FLOOR ABOVE (14.1 OR 14.2). BOTH RACM.
- O^R FLOOR STRUCTURAL RIB PIPE PENETRATION TO FLOOR ABOVE (SEE DETAIL 1 HA102)
- O^R FLOOR STRUCTURAL RIB PIPE PENETRATION FROM CRAWL SPACE (SEE DETAIL 1 HA102)
- O^P FLOOR PAN PIPE PENETRATION FROM CRAWL SPACE (SEE DETAIL 1 HA102)
- O^P FLOOR PAN PIPE PENETRATION TO FLOOR ABOVE (SEE DETAIL 1 HA102)
- ADDITIONAL PIPE
- ADDITIONAL CRAWL SPACE PIPING

MUDDIED JOINT FITTINGS (MJF'S ON THERMAL SYSTEM FITTINGS (13.1). RACM.

- x FREE STANDING MJF.
- ⊗ VERTICAL TSI WITH MJF.
- HORIZONTAL CONFLUENCE MJF.
- VERTICAL CONFLUENCE MJF.

NOTES

- A. LOCATIONS ARE APPROXIMATE.
- B. NOT ALL CEILING AREAS AND PIPE CHASES WERE ACCESSIBLE.
- C. FIBERGLASS INSULATION WAS OBSERVED IN MANY AREAS BUT IS NOT ILLUSTRATED HERE.

TSI ASBESTOS REMOVAL PLAN - FIRST FLOOR

SCALE: NTS

1

FIRST FLOOR - REMOVE AND REINSTALL THE
FOLLOWING THERMAL SYSTEM INSULATION:

- 1,195 PIPE JOINTS
- 8,395 LINEAR FEET
- 102 FLOOR PAN PENETRATIONS TO FLOOR ABOVE
- 10 FLOOR STRUCTURAL RIB PENETRATIONS TO FLOOR ABOVE
- 103 FLOOR PAN PENETRATIONS FROM CRAWL SPACE
- 34 FLOOR STRUCTURAL RIB PENETRATIONS FROM CRAWL SPACE

BID DOCUMENTS

BUILDING 8

BUILDING 20

BUILDING 1

KEY
PLAN

REVISIONS			
NO.	DESCRIPTION	DATE	BY
1	PIPE PENETRATIONS	12/6/13	JMW
2	PIPE & FLR LOCATIONS	12/12/13	JMW

VCI Program, Project and
Construction Management

**MORRISON
MAIERLE, INC.**
An Employee-Owned Company

Engineers
Surveyors
Scientists
Planners

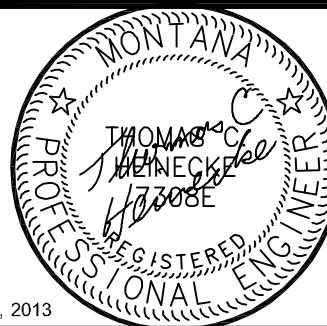
125 Schoolhouse Loop

Kalispell, MT 59901

Phone: (406) 752-2216

Fax: (406) 752-2391

COPYRIGHT © MORRISON-MAIERLE, INC., 2013



DRAWN BY: PNP
CHK'D BY: TWR
APPR. BY: TCH
DATE: 05/2013
Q.A. REVIEW
BY:
DATE:

MILES CITY

MILES CITY ASBESTOS ABATEMENT

MONTANA

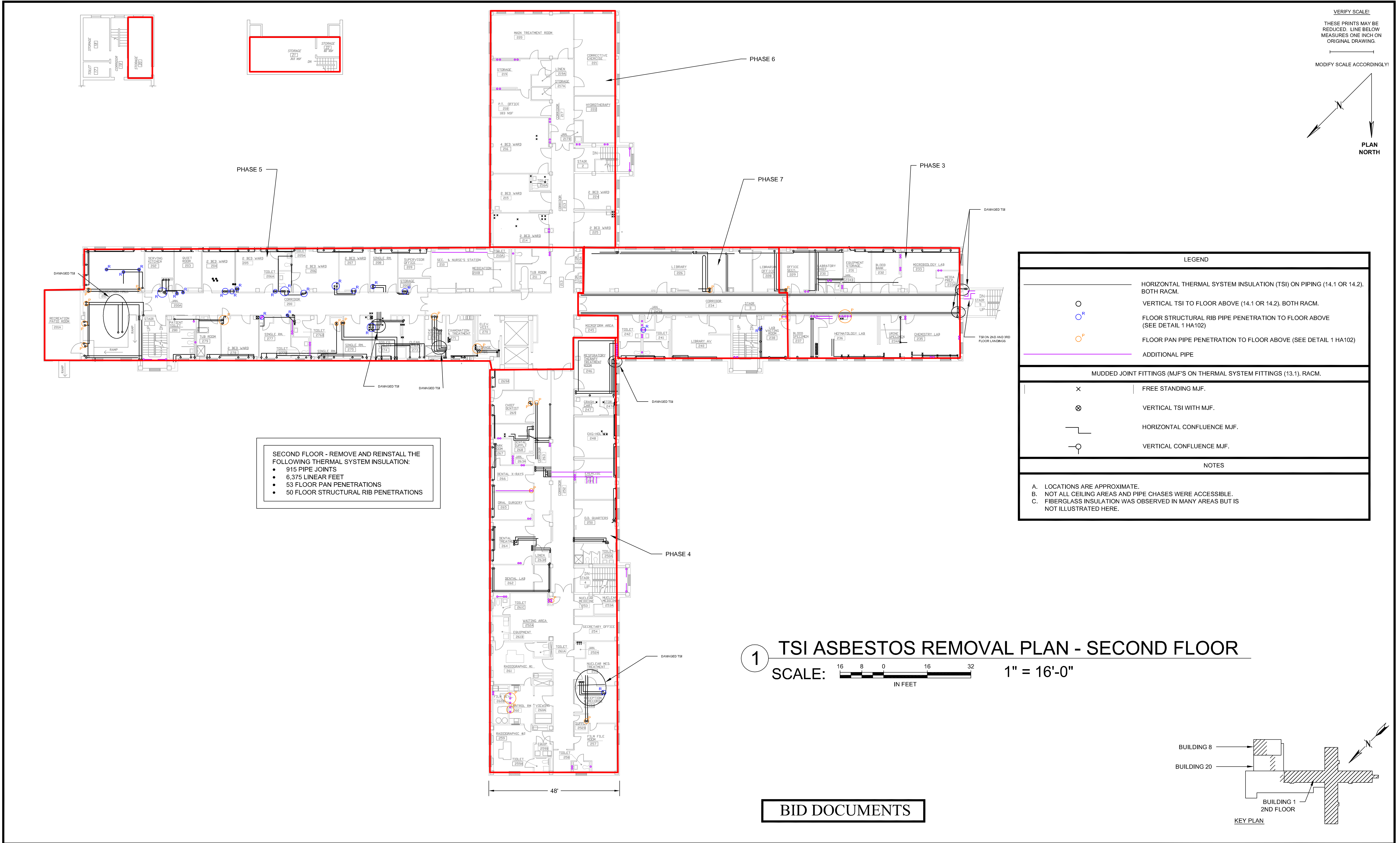
TSI ASBESTOS REMOVAL PLAN - FIRST FLOOR

PROJECT NUMBER
5281.001

SHEET NUMBER
5

DRAWING NUMBER

HA201



REVISIONS			
NO.	DESCRIPTION	DATE	BY
1	PIPE PENETRATIONS	12/6/13	JMW
2	PIPE & FLR LOCATIONS	12/12/13	JMW



Engineers
Surveyors
Scientists
Planners

125 Schoolhouse Loop
Kalispell, MT 59901

Phone: (406) 752-2216
Fax: (406) 752-2391



DRAWN BY: PNP
CHK'D. BY: TWR
APPR. BY: TCH
DATE: 05/2013

Q.A. REVIEW
BY:
DATE:

MILES CITY

MILES CITY ASBESTOS ABATEMENT

MONTANA

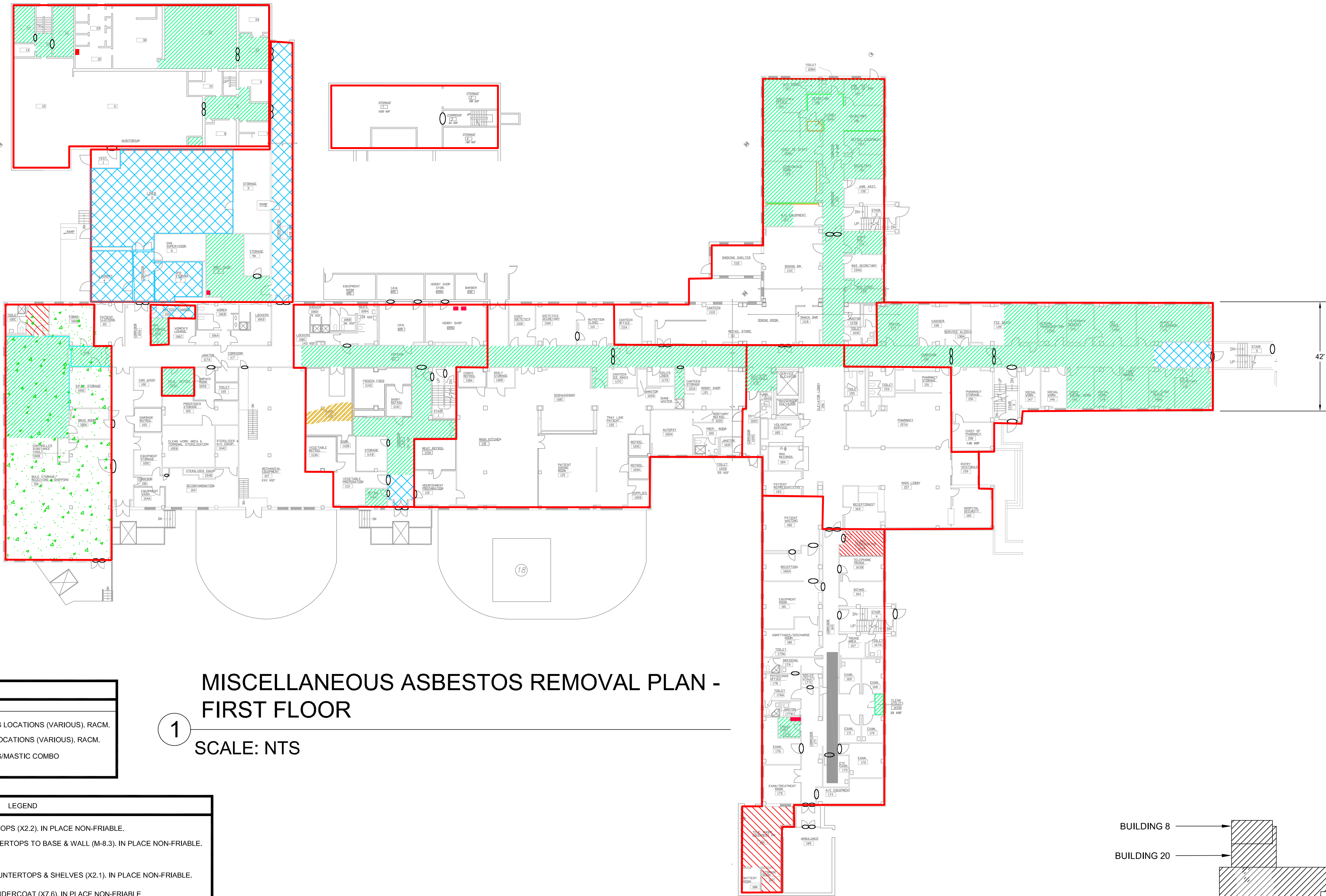
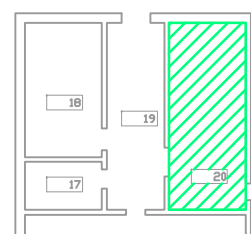
TSI ASBESTOS REMOVAL PLAN - SECOND FLOOR

PROJECT NUMBER
5281.001

SHEET NUMBER
6

DRAWING NUMBER

HA202



VERIFY SCALE!
THESE PRINTS MAY BE
REDUCED. LINE BELOW
MEASURES ONE INCH ON
ORIGINAL DRAWING.

MODIFY SCALE ACCORDINGLY!

PLAN
NORTH

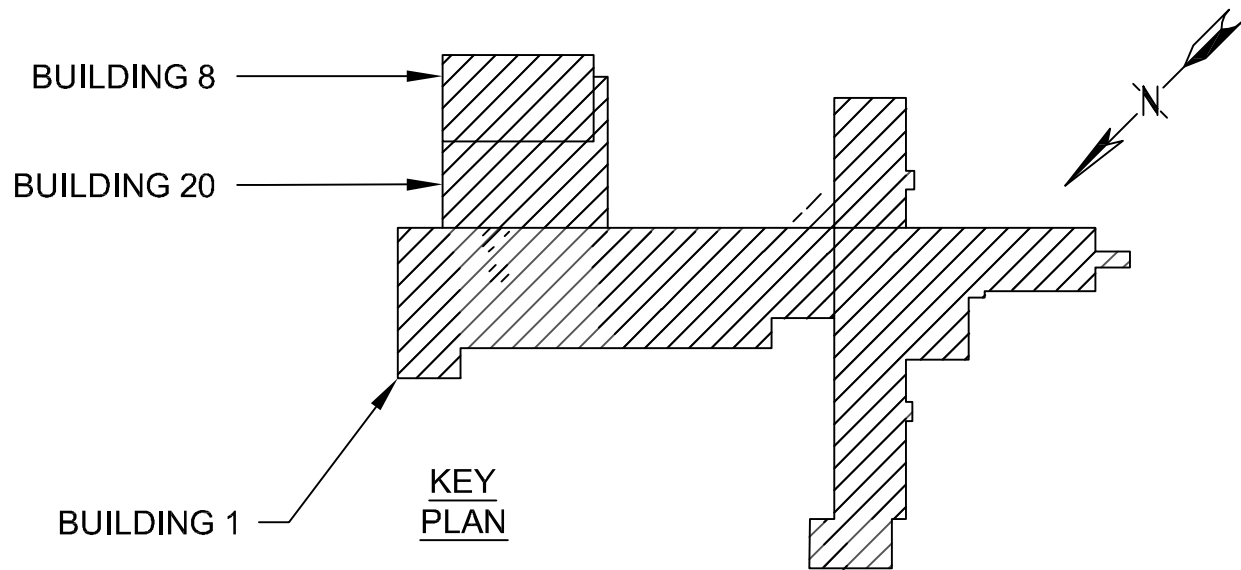
LEGEND	
FLOORING	
	CONFIRMED RESILIENT FLOORING LOCATIONS (VARIOUS). RACM.
	CONFIRMED MASTIC FLOORING LOCATIONS (VARIOUS). RACM.
	CONFIRMED RESILIENT FLOORING/MASTIC COMBO LOCATIONS (VARIOUS). RACM.

MISCELLANEOUS ASBESTOS REMOVAL PLAN - FIRST FLOOR

1
SCALE: NTS

LEGEND	
	BLACK TRANSITE-LIKE COUNTERTOPS (X2.2). IN PLACE NON-FRIABLE.
	BLACK MASTIC ADHERING COUNTERTOPS TO BASE & WALL (M-8.3). IN PLACE NON-FRIABLE.
	PANEL MASTIC
	GRAY TRANSITE PANELS FOR COUNTERTOPS & SHELVES (X2.1). IN PLACE NON-FRIABLE.
	GRAY "POPCORN" STYLE SINK UNDERCOAT (X7.6). IN PLACE NON-FRIABLE
	FIRE DOOR. ASSUMED TO CONTAIN RACM INSULATION (I7.1). NON-FRIABLE.
	PHASE BOUNDARY

BID DOCUMENTS



REVISIONS			
NO.	DESCRIPTION	DATE	BY
1	PIPE PENETRATIONS	12/6/13	JMW
2	PIPE & FLR LOCATIONS	12/12/13	JMW

VCI Program, Project and
Construction Management

MORRISON
MAIERLE, INC.
An Employee-Owned Company

Engineers
Surveyors
Scientists
Planners

125 Schoolhouse Loop
Kalispell, MT 59901
Phone: (406) 752-2216
Fax: (406) 752-2391



DRAWN BY: PNP
CHK'D BY: TWR
APPR. BY: TCH
DATE: 05/2013
Q.A. REVIEW
BY:
DATE:

MILES CITY

MILES CITY ASBESTOS ABATEMENT

MONTANA

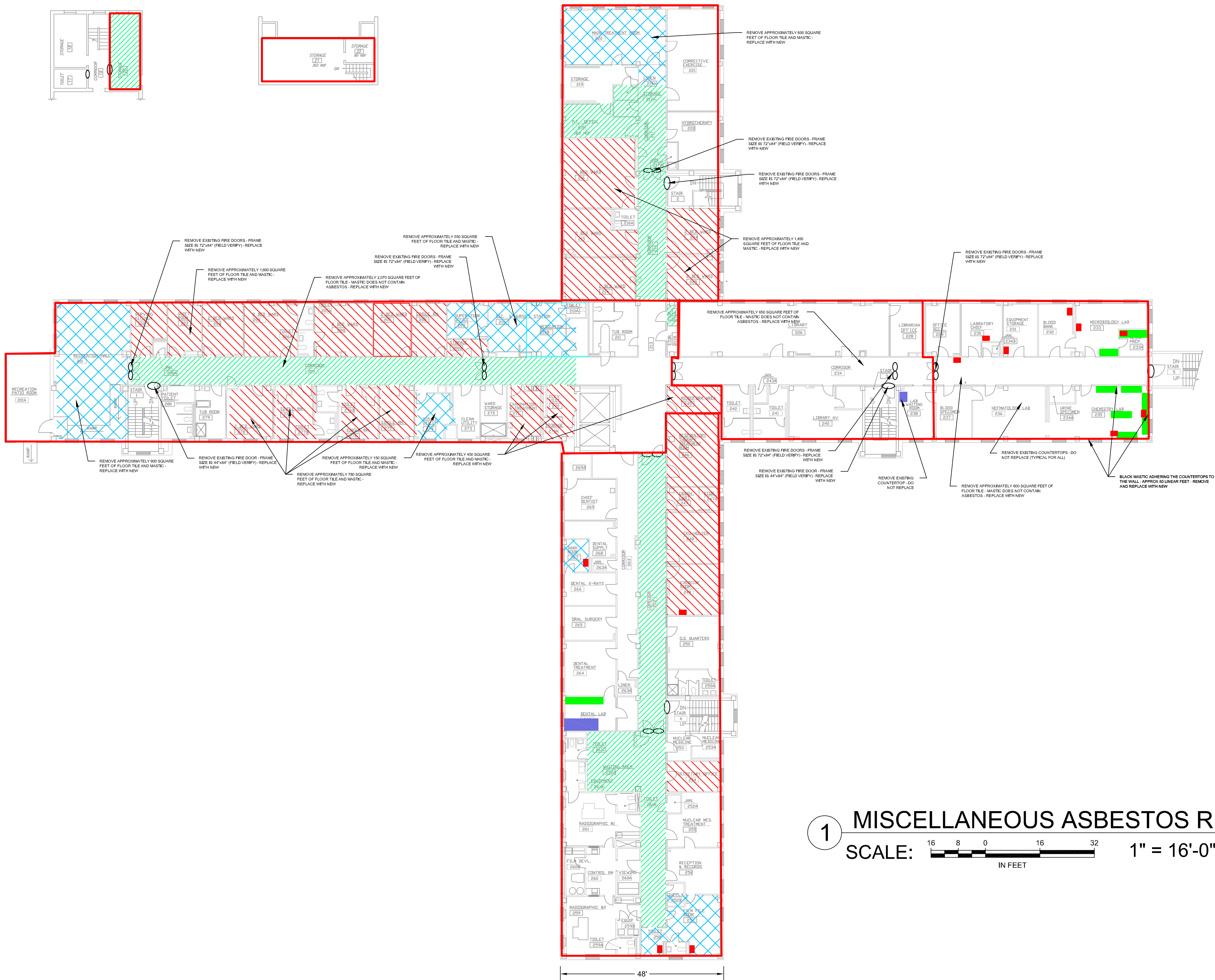
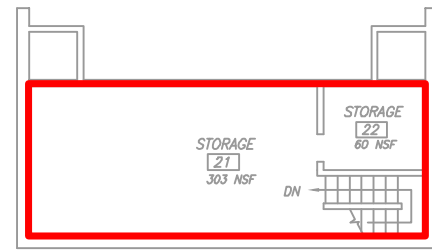
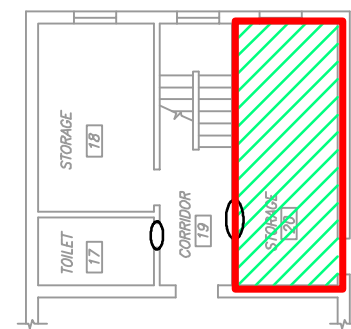
MISCELLANEOUS ASBESTOS REMOVAL PLAN - FIRST FLOOR

PROJECT NUMBER
5281.001

SHEET NUMBER
8

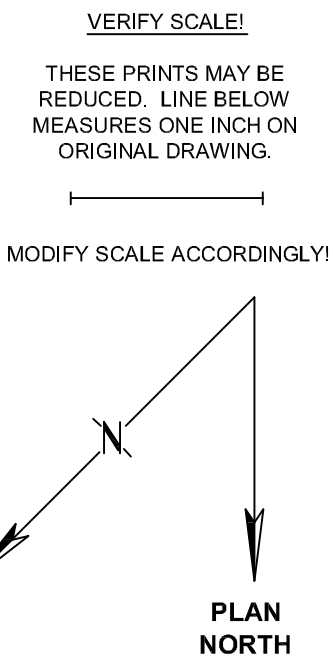
DRAWING NUMBER

HA301



LEGEND	
FLOORING	
	CONFIRMED RESILIENT FLOORING LOCATIONS (VARIOUS), RACM.
	CONFIRMED MASTIC FLOORING LOCATIONS (VARIOUS), RACM.
	CONFIRMED RESILIENT FLOORING/MASTIC COMBO LOCATIONS (VARIOUS), RACM.

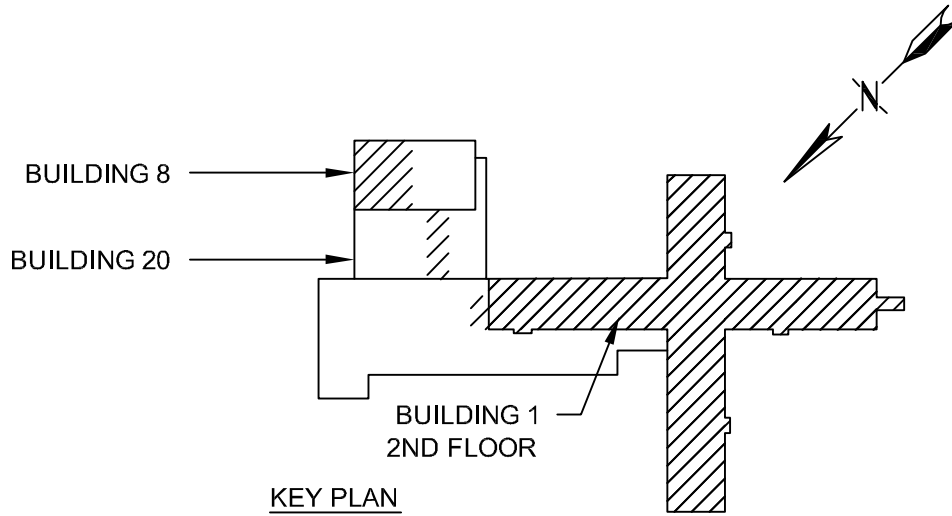
LEGEND	
	BLACK TRANSITE-LIKE COUNTERTOPS (X2.2). IN PLACE NON-FRIABLE.
	BLACK MASTIC ADHERING COUNTERTOPS TO BASE & WALL (M-8.3). IN PLACE NON-FRIABLE.
	PANEL MASTIC
	GRAY TRANSITE PANELS FOR COUNTERTOPS & SHELVES (X2.1). IN PLACE NON-FRIABLE.
	GRAY "POPCORN" STYLE SINK UNDERCOAT (X7.6). IN PLACE NON-FRIABLE
	FIRE DOOR. ASSUMED TO CONTAIN RACM INSULATION (I7.1). NON-FRIABLE.
	PHASE BOUNDARY



MISCELLANEOUS ASBESTOS REMOVAL PLAN - SECOND FLOOR

SCALE: 1" = 16'-0"

BID DOCUMENTS



REVISIONS			
NO.	DESCRIPTION	DATE	BY
1	PIPE PENETRATIONS	12/6/13	JMW
2	PIPE & FLR LOCATIONS	12/12/13	JMW

VCI Program, Project and Construction Management

MORRISON MAIERLE, INC.
An Employee-Owned Company

Engineers
Surveyors
Scientists
Planners

125 Schoolhouse Loop
Kalispell, MT 59901
Phone: (406) 752-2216
Fax: (406) 752-2391



DRAWN BY: PNP
CHK'D. BY: TWR
APPR. BY: TCH
DATE: 05/2013
Q.A. REVIEW
BY:
DATE:

MILES CITY

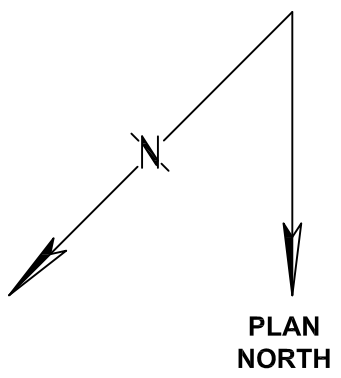
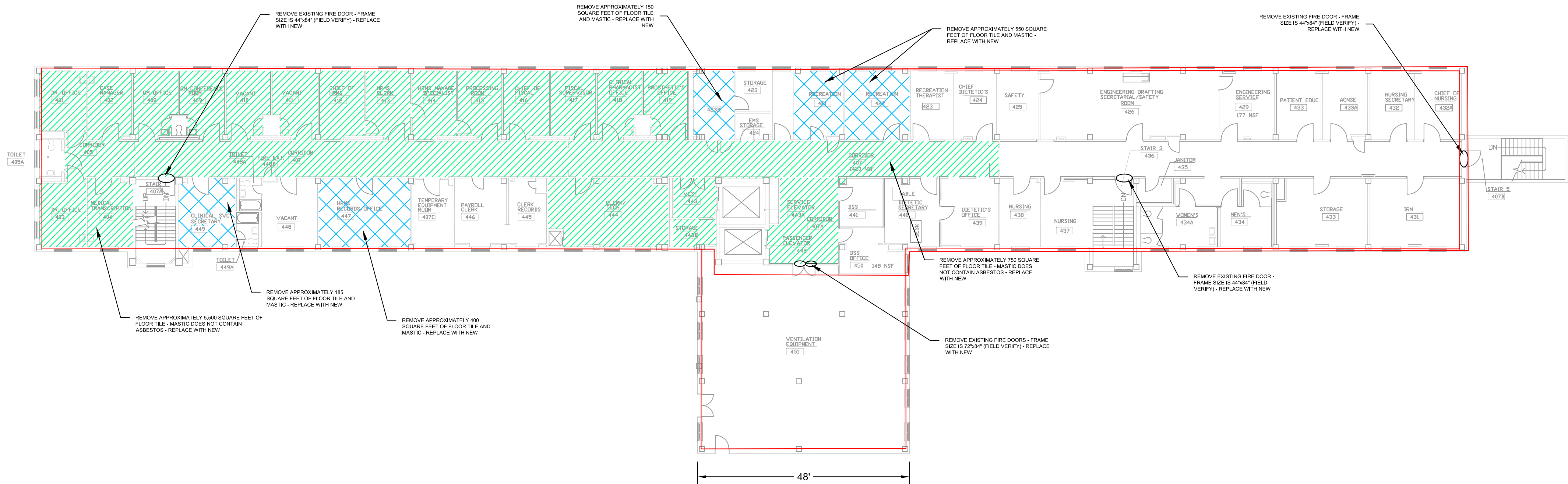
MILES CITY ASBESTOS ABATEMENT

MONTANA

MISCELLANEOUS ASBESTOS REMOVAL PLAN - SECOND FLOOR

PROJECT NUMBER
5281.001
SHEET NUMBER
9
DRAWING NUMBER
HA302

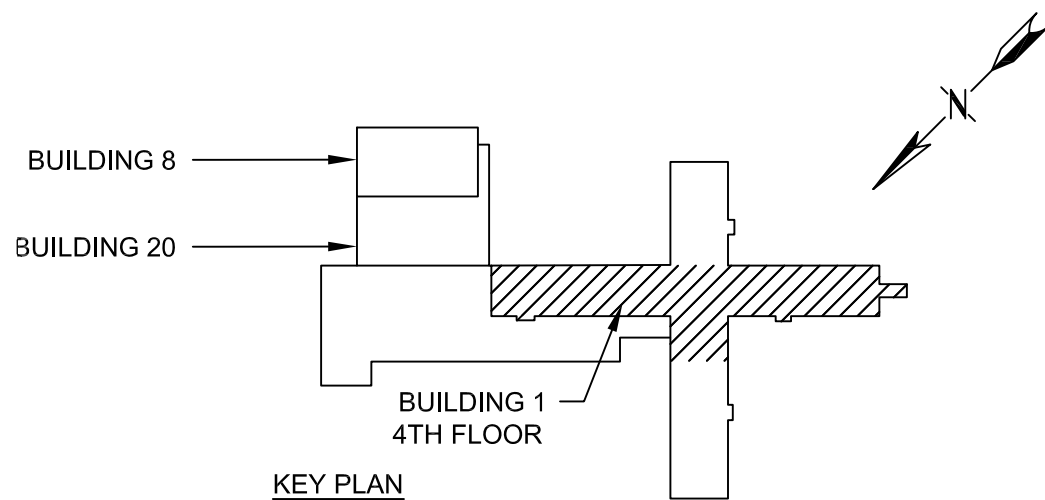
VERIFY SCALE!
THESE PRINTS MAY BE
REDUCED. LINE BELOW
MEASURES ONE INCH ON
ORIGINAL DRAWING.
MODIFY SCALE ACCORDINGLY!



1 MISCELLANEOUS ASBESTOS REMOVAL PLAN - FOURTH FLOOR
SCALE: 1" = 16'-0"

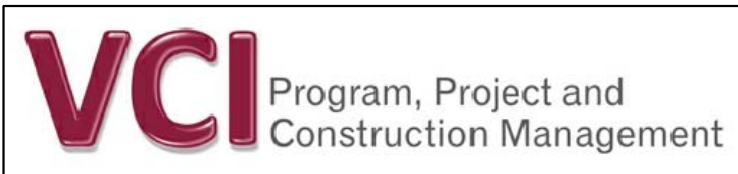
LEGEND	
FLOORING	
	CONFIRMED RESILIENT FLOORING LOCATIONS (VARIOUS). RACM.
	CONFIRMED MASTIC FLOORING LOCATIONS (VARIOUS). RACM.
	CONFIRMED RESILIENT FLOORING/MASTIC COMBO LOCATIONS (VARIOUS). RACM.
	ASSUMED ACM FLOORING MATERIALS.

LEGEND	
	LOCATION OF TAN HVAC MASTIC (H1.1). NON-FRIABLE
	FIRE DOOR. ASSUMED TO CONTAIN RACM INSULATION (I7.1). NON-FRIABLE.



CONSTRUCTION DOCUMENTS

REVISIONS			
NO.	DESCRIPTION	DATE	BY



Engineers
Surveyors
Scientists
Planners

125 Schoolhouse Loop
Kalispell, MT 59901

Phone: (406) 752-2216
Fax: (406) 752-2391



DRAWN BY: PNP
CHK'D. BY: TWR
APPR. BY: TCH
DATE: 05/2013
Q.A. REVIEW
BY: _____
DATE: _____

MILES CITY ASBESTOS ABATEMENT
MILES CITY MONTANA
MISCELLANEOUS ASBESTOS REMOVAL PLAN - FOURTH FLOOR

PROJECT NUMBER
5281.001
SHEET NUMBER
11
DRAWING NUMBER
HA304