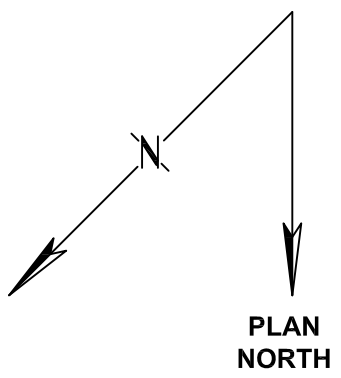
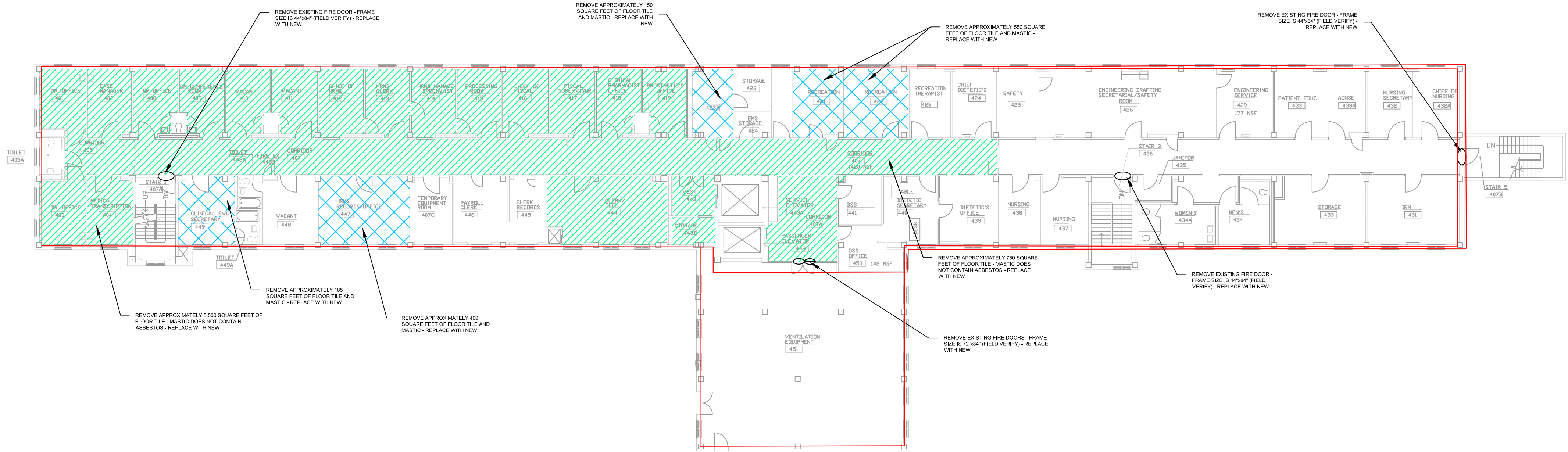


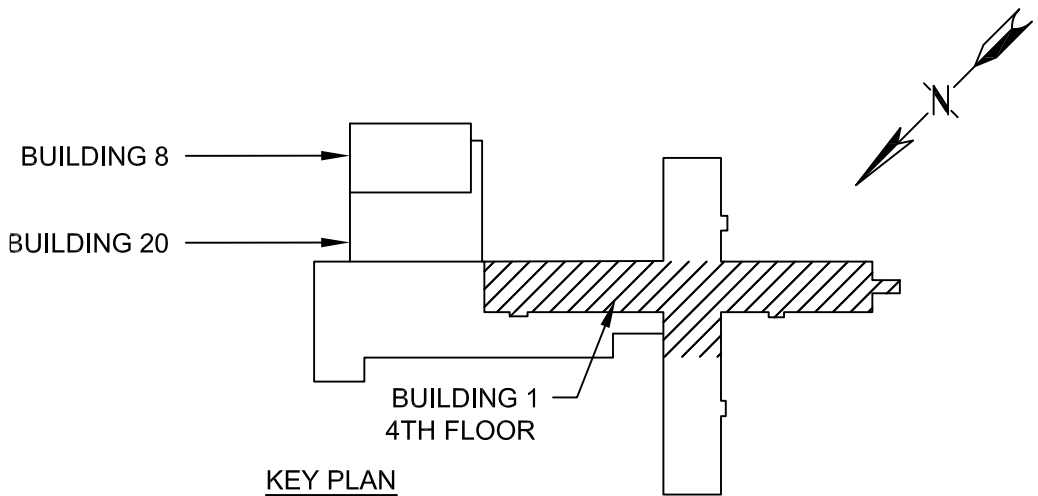
VERIFY SCALE!
THESE PRINTS MAY BE
REDUCED. LINE BELOW
MEASURES ONE INCH ON
ORIGINAL DRAWING.
MODIFY SCALE ACCORDINGLY!



1 PHASE 2 - FOURTH FLOOR
SCALE: 16 8 0 16 32 1" = 16'-0"
IN FEET

LEGEND	
FLOORING	
	CONFIRMED RESILIENT FLOORING LOCATIONS (VARIOUS). RACM.
	CONFIRMED MASTIC FLOORING LOCATIONS (VARIOUS). RACM.
	CONFIRMED RESILIENT FLOORING/MASTIC COMBO LOCATIONS (VARIOUS). RACM.
	ASSUMED ACM FLOORING MATERIALS.

LEGEND	
	LOCATION OF TAN HVAC MASTIC (H1.1). NON-FRIABLE
	FIRE DOOR. ASSUMED TO CONTAIN RACM INSULATION (I7.1). NON-FRIABLE.



CONSTRUCTION DOCUMENTS

REVISIONS			
NO.	DESCRIPTION	DATE	BY



Engineers
Surveyors
Scientists
Planners

125 Schoolhouse Loop
Kalispell, MT 59901

Phone: (406) 752-2216
Fax: (406) 752-2391



DRAWN BY: PNP
CHK'D. BY: TWR
APPR. BY: TCH
DATE: 05/2013
Q.A. REVIEW
BY: _____
DATE: _____

MILES CITY

MILES CITY ASBESTOS ABATEMENT

MONTANA

PHASE 2 PLAN

PROJECT NUMBER

5281.001

SHEET NUMBER

13

DRAWING NUMBER

HA402

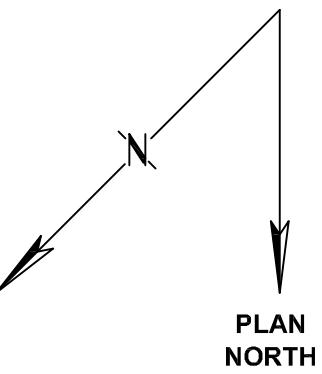
PHASING PLAN NOTES:

- PHASED ABATEMENT TO BE PERFORMED AS NUMERICALLY SEQUENCED.
- CONTRACTOR SHALL COORDINATE WITH THE RESIDENT ENGINEER 72 HOURS PRIOR TO COMMENCING THE SUBSEQUENT PHASE.
- THE VA AT ITS SOLE DISCRETION MAY CHANGE THE PHASING SEQUENCE WITHOUT CHANGE TO THE CONTRACT AND AT NO ADDITIONAL COST.
- THE CONTRACTOR SHALL NOT ENGAGE, DISCUSS, NOR INTERFERE WITH THE TENANTS. ALL COMMUNICATIONS WITH THE TENANTS SHALL BE CONVEYED AND CONDUCTED THROUGH THE RESIDENT ENGINEER.
- THE CONTRACTOR SHALL SUBMIT A DAILY SCHEDULE FOR EACH DISCRETE PHASE 48 HOURS PRIOR TO THE START OF THAT PHASE.
- THE CONTRACTOR SHALL NOTIFY THE RESIDENT ENGINEER IMMEDIATELY WHEN IT BELIEVES IT WILL NOT MEET COMPLETION OF THE CURRENT PHASED CONSTRUCTION AND COMMENCE THE SUBSEQUENT PHASE.

VERIFY SCALE!

THESE PRINTS MAY BE REDUCED. LINE BELOW MEASURES ONE INCH ON ORIGINAL DRAWING.

MODIFY SCALE ACCORDINGLY!

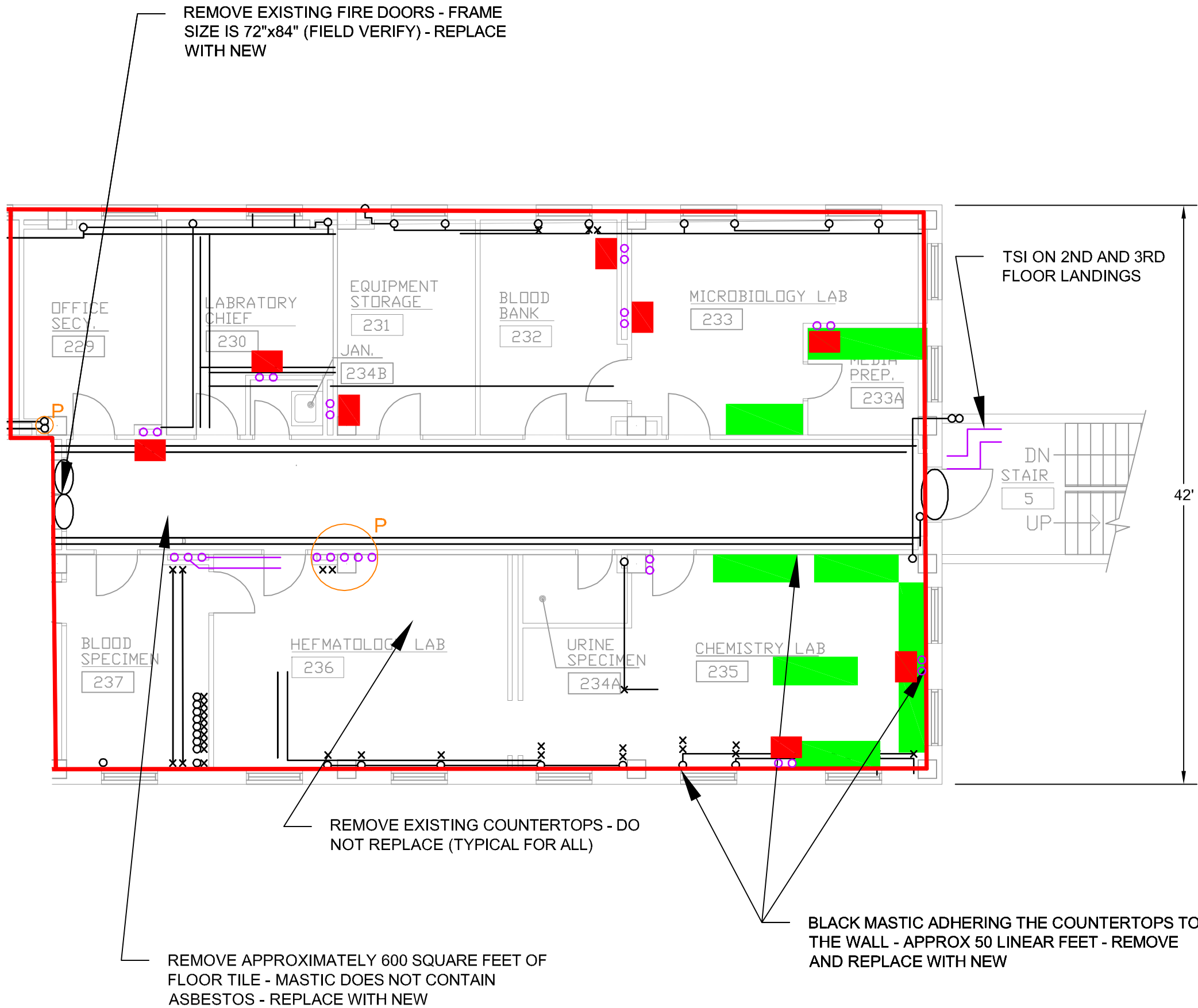


LEGEND	
FLOORING	
	CONFIRMED RESILIENT FLOORING LOCATIONS (VARIOUS), RACM.
	CONFIRMED MASTIC FLOORING LOCATIONS (VARIOUS), RACM.
	CONFIRMED RESILIENT FLOORING/MASTIC COMBO LOCATIONS (VARIOUS), RACM.

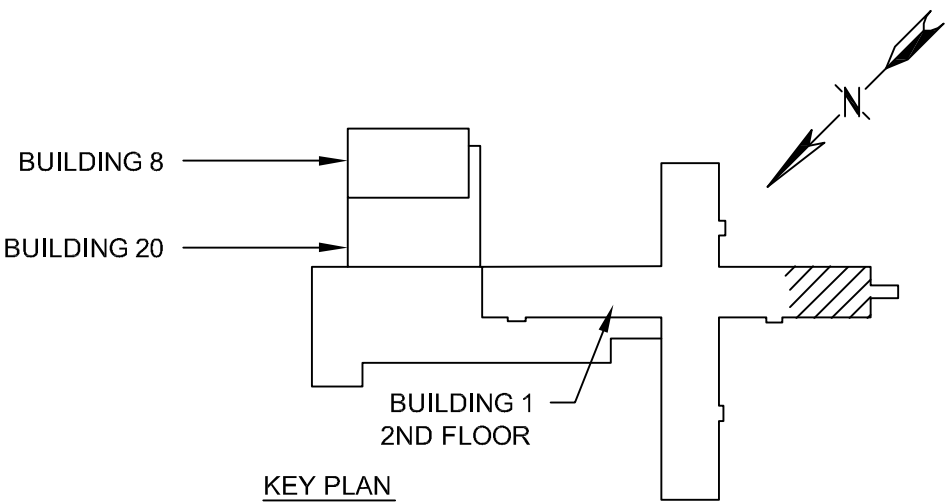
LEGEND	
	BLACK TRANSITE-LIKE COUNTERTOPS (X2.2), IN PLACE NON-FRIABLE.
	BLACK MASTIC ADHERING COUNTERTOPS TO BASE & WALL (M-8.3), IN PLACE NON-FRIABLE.
	PANEL MASTIC
	GRAY TRANSITE PANELS FOR COUNTERTOPS & SHELVES (X2.1), IN PLACE NON-FRIABLE.
	GRAY "POPCORN" STYLE SINK UNDERCOAT (X7.6), IN PLACE NON-FRIABLE
	FIRE DOOR. ASSUMED TO CONTAIN RACM INSULATION (I7.1). NON-FRIABLE.
	PHASE BOUNDARY

LEGEND	
	HORIZONTAL THERMAL SYSTEM INSULATION (TSI) ON PIPING (14.1 OR 14.2), BOTH RACM.
	VERTICAL TSI TO FLOOR ABOVE (14.1 OR 14.2), BOTH RACM.
	FLOOR STRUCTURAL RIB PIPE PENETRATION TO FLOOR ABOVE (SEE DETAIL 1 HA102)
	FLOOR PAN PIPE PENETRATION TO FLOOR ABOVE (SEE DETAIL 1 HA102)
	ADDITIONAL PIPE
MUDDIED JOINT FITTINGS (MJF'S ON THERMAL SYSTEM FITTINGS (13.1), RACM.	
	FREE STANDING MJF.
	VERTICAL TSI WITH MJF.
	HORIZONTAL CONFLUENCE MJF.
	VERTICAL CONFLUENCE MJF.
NOTES	
A. LOCATIONS ARE APPROXIMATE. B. NOT ALL CEILING AREAS AND PIPE CHASES WERE ACCESSIBLE. C. FIBERGLASS INSULATION WAS OBSERVED IN MANY AREAS BUT IS NOT ILLUSTRATED HERE.	

- PHASE 3 - REMOVE AND REINSTALL THE FOLLOWING THERMAL SYSTEM INSULATION:
- 140 PIPE JOINTS
 - 1,450 LINEAR FEET
 - 9 FLOOR PAN PENETRATIONS
 - 0 FLOOR STRUCTURAL RIB PENETRATIONS



1 PHASE 3 - SECOND FLOOR
SCALE: 1" = 8'-0"



BID DOCUMENTS

REVISIONS			
NO.	DESCRIPTION	DATE	BY
1	PIPE PENETRATIONS	12/6/13	JMW
2	PIPE & FLR LOCATIONS	12/12/13	JMW

VCI Program, Project and Construction Management

MORRISON MAIERLE, INC.
An Employee-Owned Company

Engineers
Surveyors
Scientists
Planners

125 Schoolhouse Loop
Kalispell, MT 59901

Phone: (406) 752-2216
Fax: (406) 752-2391



DRAWN BY: PNP
CHK'D. BY: TWR
APPR. BY: TCH
DATE: 05/2013
Q.A. REVIEW
BY: _____
DATE: _____

MILES CITY

MILES CITY ASBESTOS ABATEMENT

MONTANA

PHASE 3 PLAN

PROJECT NUMBER
5281.001

SHEET NUMBER
14

DRAWING NUMBER

HA403

PHASING PLAN NOTES:

- PHASED ABATEMENT TO BE PERFORMED AS NUMERICALLY SEQUENCED.
- CONTRACTOR SHALL COORDINATE WITH THE RESIDENT ENGINEER 72 HOURS PRIOR TO COMMENCING THE SUBSEQUENT PHASE.
- THE VA AT ITS SOLE DISCRETION MAY CHANGE THE PHASING SEQUENCE WITHOUT CHANGE TO THE CONTRACT AND AT NO ADDITIONAL COST.
- THE CONTRACTOR SHALL NOT ENGAGE, DISCUSS, NOR INTERFERE WITH THE TENANTS. ALL COMMUNICATIONS WITH THE TENANTS SHALL BE CONVEYED AND CONDUCTED THROUGH THE RESIDENT ENGINEER.
- THE CONTRACTOR SHALL SUBMIT A DAILY SCHEDULE FOR EACH DISCRETE PHASE 48 HOURS PRIOR TO THE START OF THAT PHASE.
- THE CONTRACTOR SHALL NOTIFY THE RESIDENT ENGINEER IMMEDIATELY WHEN IT BELIEVES IT WILL NOT MEET COMPLETION OF THE CURRENT PHASED CONSTRUCTION AND COMMENCE THE SUBSEQUENT PHASE.

VERIFY SCALE!

THESE PRINTS MAY BE REDUCED. LINE BELOW MEASURES ONE INCH ON ORIGINAL DRAWING.

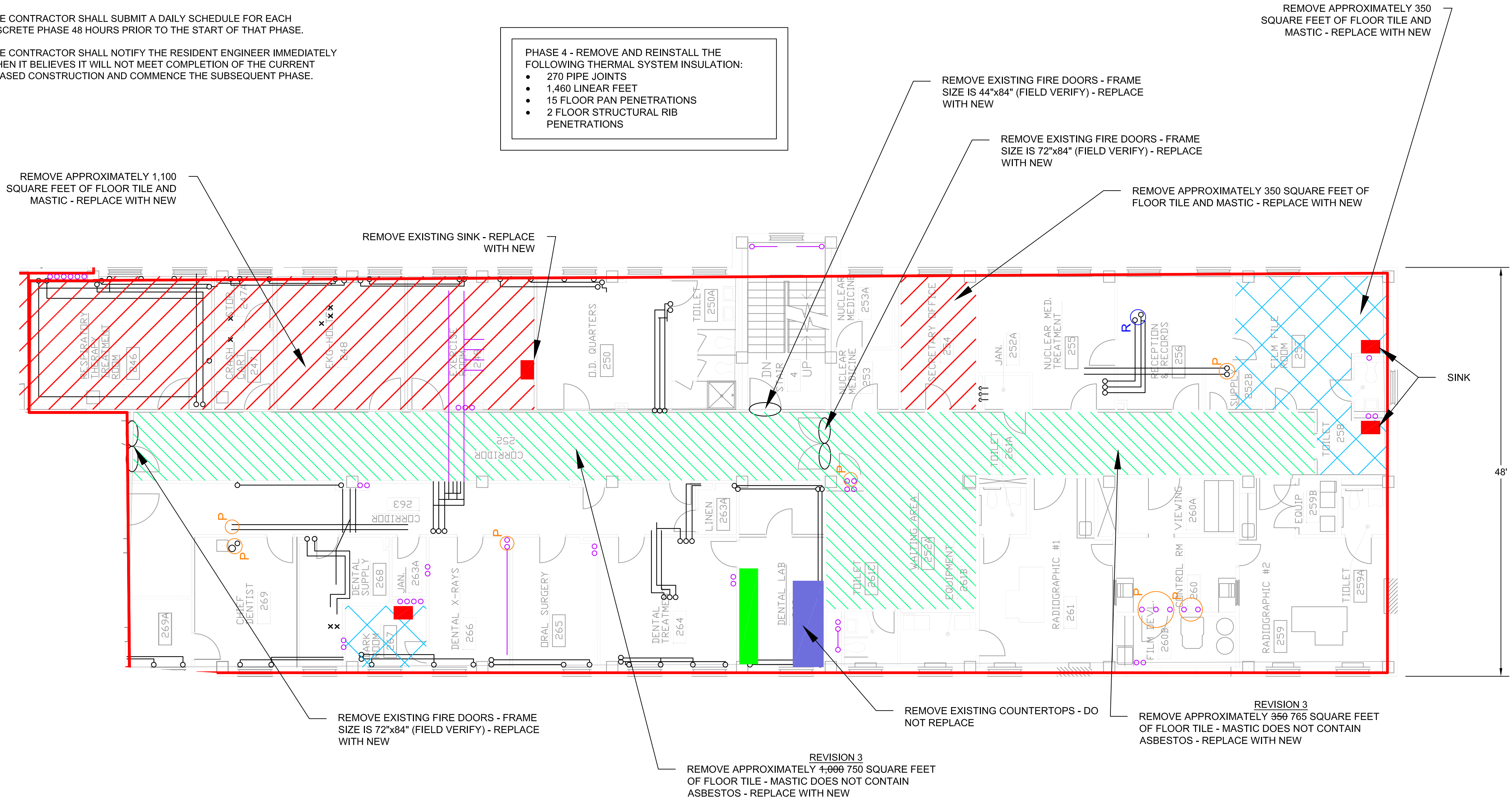
MODIFY SCALE ACCORDINGLY!

PLAN NORTH

LEGEND	
FLOORING	
	CONFIRMED RESILIENT FLOORING LOCATIONS (VARIOUS). RACM.
	CONFIRMED MASTIC FLOORING LOCATIONS (VARIOUS). RACM.
	CONFIRMED RESILIENT FLOORING/MASTIC COMBO LOCATIONS (VARIOUS). RACM.

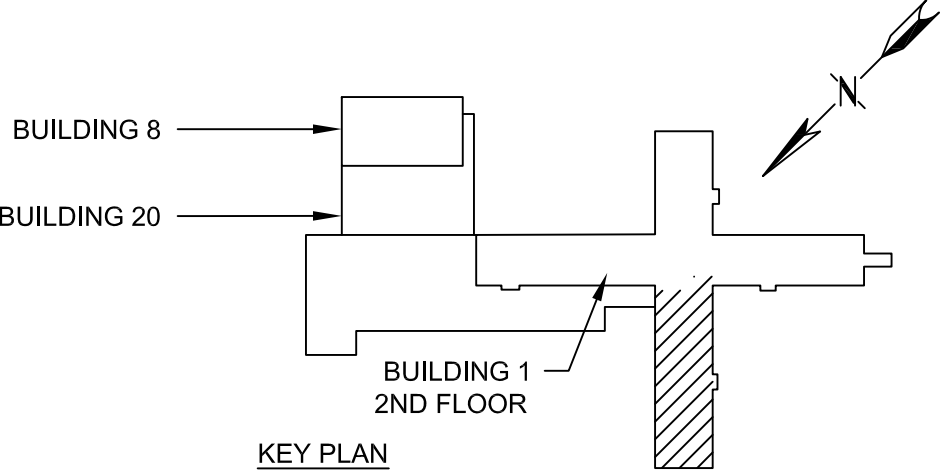
LEGEND	
	BLACK TRANSITE-LIKE COUNTERTOPS (X2.2). IN PLACE NON-FRIABLE.
	BLACK MASTIC ADHERING COUNTERTOPS TO BASE & WALL (M-8.3). IN PLACE NON-FRIABLE.
	PANEL MASTIC
	GRAY TRANSITE PANELS FOR COUNTERTOPS & SHELVES (X2.1). IN PLACE NON-FRIABLE.
	GRAY "POPCORN" STYLE SINK UNDERCOAT (X7.6). IN PLACE NON-FRIABLE
	FIRE DOOR. ASSUMED TO CONTAIN RACM INSULATION (I7.1). NON-FRIABLE.
	PHASE BOUNDARY

LEGEND	
	HORIZONTAL THERMAL SYSTEM INSULATION (TSI) ON PIPING (14.1 OR 14.2). BOTH RACM.
	VERTICAL TSI TO FLOOR ABOVE (14.1 OR 14.2). BOTH RACM.
	FLOOR STRUCTURAL RIB PIPE PENETRATION TO FLOOR ABOVE (SEE DETAIL 1 HA102)
	FLOOR PAN PIPE PENETRATION TO FLOOR ABOVE (SEE DETAIL 1 HA102)
	ADDITIONAL PIPE
MUDDIED JOINT FITTINGS (MJF'S ON THERMAL SYSTEM FITTINGS (13.1). RACM.	
	FREE STANDING MJF.
	VERTICAL TSI WITH MJF.
	HORIZONTAL CONFLUENCE MJF.
	VERTICAL CONFLUENCE MJF.
NOTES	
A. LOCATIONS ARE APPROXIMATE. B. NOT ALL CEILING AREAS AND PIPE CHASES WERE ACCESSIBLE. C. FIBERGLASS INSULATION WAS OBSERVED IN MANY AREAS BUT IS NOT ILLUSTRATED HERE.	



1 PHASE 4 - SECOND FLOOR
SCALE: 1" = 8'-0"

BID DOCUMENTS



REVISIONS			
NO.	DESCRIPTION	DATE	BY
1	PIPE PENETRATIONS	12/6/13	JMW
2	PIPE & FLR LOCATIONS	12/12/13	JMW
3	AREA CALLOUT	2/18/14	TCH

VCI Program, Project and Construction Management

MORRISON MAIERLE, INC.
An Employee-Owned Company

Engineers
Surveyors
Scientists
Planners

125 Schoolhouse Loop
Kalispell, MT 59901

Phone: (406) 752-2216
Fax: (406) 752-2391

DRAWN BY: PNP
CHK'D BY: TWR
APPR. BY: TCH
DATE: 05/2013
Q.A. REVIEW
BY:
DATE:

MILES CITY

MILES CITY ASBESTOS ABATEMENT

MONTANA

PHASE 4 PLAN

PROJECT NUMBER
5281.001




SHEET NUMBER
15








DRAWING NUMBER
HA404










COPYRIGHT © MORRISON-MAIERLE, INC., 2014

PHASING PLAN NOTES:

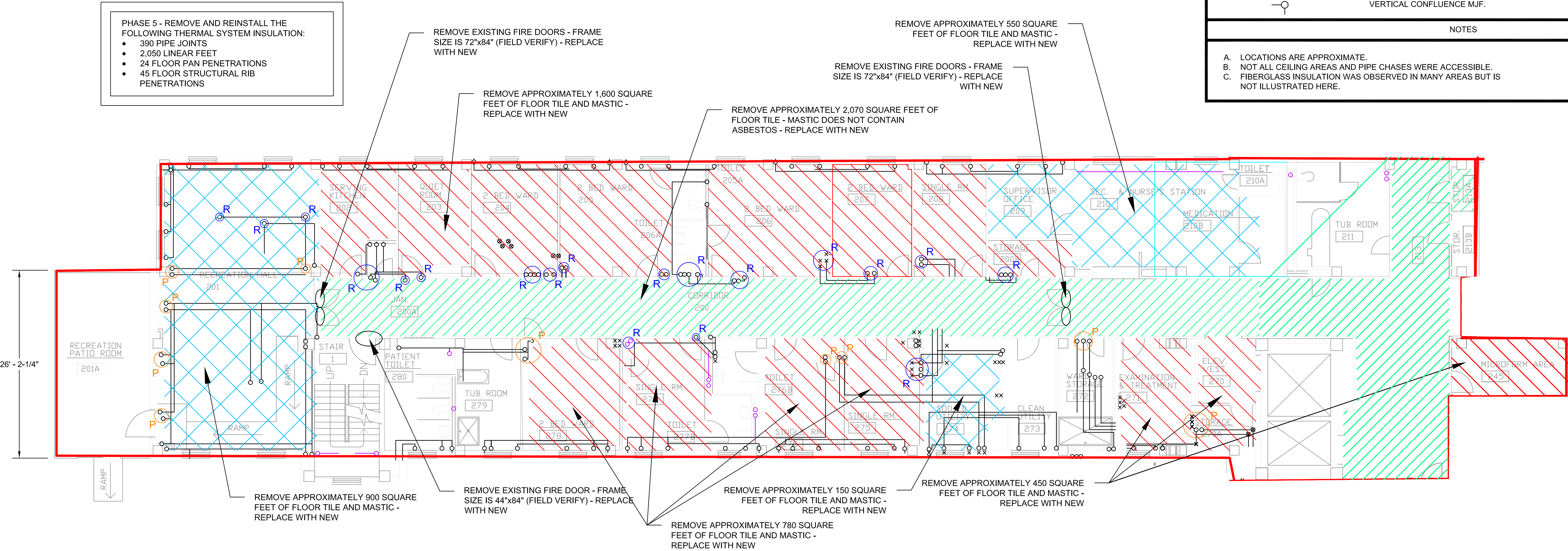
- PHASED ABATEMENT TO BE PERFORMED AS NUMERICALLY SEQUENCED.
- CONTRACTOR SHALL COORDINATE WITH THE RESIDENT ENGINEER 72 HOURS PRIOR TO COMMENCING THE SUBSEQUENT PHASE.
- THE VA AT ITS SOLE DISCRETION MAY CHANGE THE PHASING SEQUENCE WITHOUT CHANGE TO THE CONTRACT AND AT NO ADDITIONAL COST.
- THE CONTRACTOR SHALL NOT ENGAGE, DISCUSS, NOR INTERFERE WITH THE TENANTS. ALL COMMUNICATIONS WITH THE TENANTS SHALL BE CONVEYED AND CONDUCTED THROUGH THE RESIDENT ENGINEER.
- THE CONTRACTOR SHALL SUBMIT A DAILY SCHEDULE FOR EACH DISCRETE PHASE 48 HOURS PRIOR TO THE START OF THAT PHASE.
- THE CONTRACTOR SHALL NOTIFY THE RESIDENT ENGINEER IMMEDIATELY WHEN IT BELIEVES IT WILL NOT MEET COMPLETION OF THE CURRENT PHASED CONSTRUCTION AND COMMENCE THE SUBSEQUENT PHASE.

LEGEND	
FLOORING	
	CONFIRMED RESILIENT FLOORING LOCATIONS (VARIOUS), RACM.
	CONFIRMED MASTIC FLOORING LOCATIONS (VARIOUS), RACM.
	CONFIRMED RESILIENT FLOORING/MASTIC COMBO LOCATIONS (VARIOUS), RACM.

LEGEND	
	BLACK TRANSITE-LIKE COUNTERTOPS (X2.2), IN PLACE NON-FRIABLE.
	BLACK MASTIC ADHERING COUNTERTOPS TO BASE & WALL (M-8.3), IN PLACE NON-FRIABLE.
	PANEL MASTIC
	GRAY TRANSITE PANELS FOR COUNTERTOPS & SHELVES (X2.1), IN PLACE NON-FRIABLE.
	GRAY "POPCORN" STYLE SINK UNDERCOAT (X7.6), IN PLACE NON-FRIABLE
	FIRE DOOR, ASSUMED TO CONTAIN RACM INSULATION (I7.1), NON-FRIABLE.
	PHASE BOUNDARY

LEGEND	
	HORIZONTAL THERMAL SYSTEM INSULATION (TSI) ON PIPING (14.1 OR 14.2), BOTH RACM.
	VERTICAL TSI TO FLOOR ABOVE (14.1 OR 14.2), BOTH RACM.
	FLOOR STRUCTURAL RIB PIPE PENETRATION TO FLOOR ABOVE (SEE DETAIL 1 HA102)
	FLOOR PAN PIPE PENETRATION TO FLOOR ABOVE (SEE DETAIL 1 HA102)
	ADDITIONAL PIPE
MUDDED JOINT FITTINGS (MJF'S ON THERMAL SYSTEM FITTINGS (13.1), RACM.	
	FREE STANDING MJF.
	VERTICAL TSI WITH MJF.
	HORIZONTAL CONFLUENCE MJF.
	VERTICAL CONFLUENCE MJF.
NOTES	
A. LOCATIONS ARE APPROXIMATE. B. NOT ALL CEILING AREAS AND PIPE CHASES WERE ACCESSIBLE. C. FIBERGLASS INSULATION WAS OBSERVED IN MANY AREAS BUT IS NOT ILLUSTRATED HERE.	

VERIFY SCALE!
THESE PRINTS MAY BE REDUCED. LINE BELOW MEASURES ONE INCH ON ORIGINAL DRAWING.
MODIFY SCALE ACCORDINGLY!
PLAN NORTH

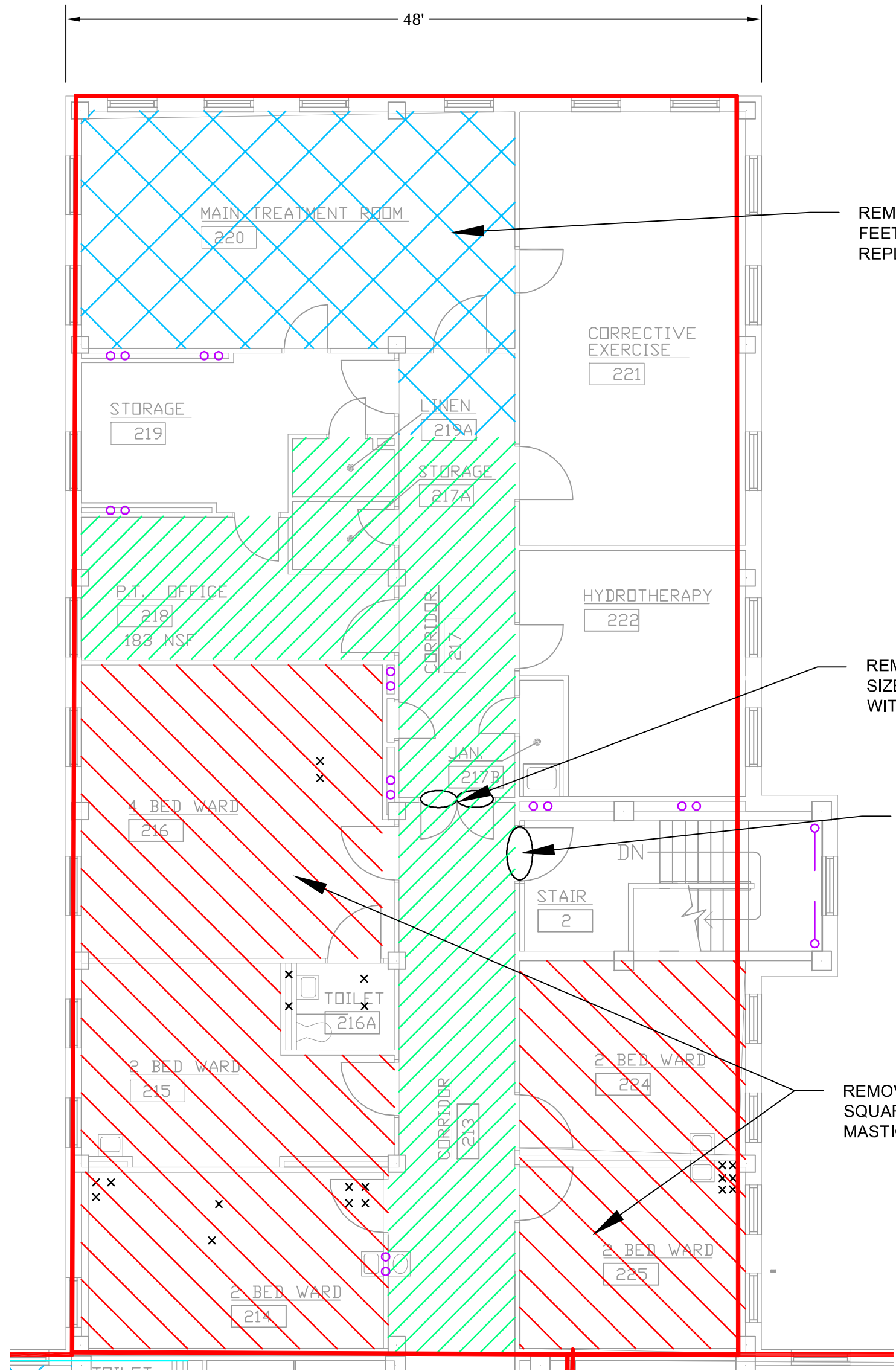


PHASING PLAN NOTES:

- PHASED ABATEMENT TO BE PERFORMED AS NUMERICALLY SEQUENCED.
- CONTRACTOR SHALL COORDINATE WITH THE RESIDENT ENGINEER 72 HOURS PRIOR TO COMMENCING THE SUBSEQUENT PHASE.
- THE VA AT ITS SOLE DISCRETION MAY CHANGE THE PHASING SEQUENCE WITHOUT CHANGE TO THE CONTRACT AND AT NO ADDITIONAL COST.
- THE CONTRACTOR SHALL NOT ENGAGE, DISCUSS, NOR INTERFERE WITH THE TENANTS. ALL COMMUNICATIONS WITH THE TENANTS SHALL BE CONVEYED AND CONDUCTED THROUGH THE RESIDENT ENGINEER.
- THE CONTRACTOR SHALL SUBMIT A DAILY SCHEDULE FOR EACH DISCRETE PHASE 48 HOURS PRIOR TO THE START OF THAT PHASE.
- THE CONTRACTOR SHALL NOTIFY THE RESIDENT ENGINEER IMMEDIATELY WHEN IT BELIEVES IT WILL NOT MEET COMPLETION OF THE CURRENT PHASED CONSTRUCTION AND COMMENCE THE SUBSEQUENT PHASE.

PHASE 6 - REMOVE AND REINSTALL THE FOLLOWING THERMAL SYSTEM INSULATION:

- 50 PIPE JOINTS
- 180 LINEAR FEET
- 0 FLOOR PAN PENETRATIONS
- 0 FLOOR STRUCTURAL RIB PENETRATIONS



REMOVE APPROXIMATELY 600 SQUARE FEET OF FLOOR TILE AND MASTIC - REPLACE WITH NEW

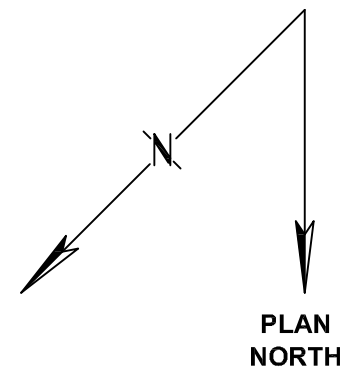
REMOVE EXISTING FIRE DOORS - FRAME SIZE IS 72"x84" (FIELD VERIFY) - REPLACE WITH NEW

REMOVE EXISTING FIRE DOORS - FRAME SIZE IS 72"x84" (FIELD VERIFY) - REPLACE WITH NEW

REMOVE APPROXIMATELY 1,450 SQUARE FEET OF FLOOR TILE AND MASTIC - REPLACE WITH NEW

1 PHASE 6 - SECOND FLOOR
SCALE: 1" = 8'-0"

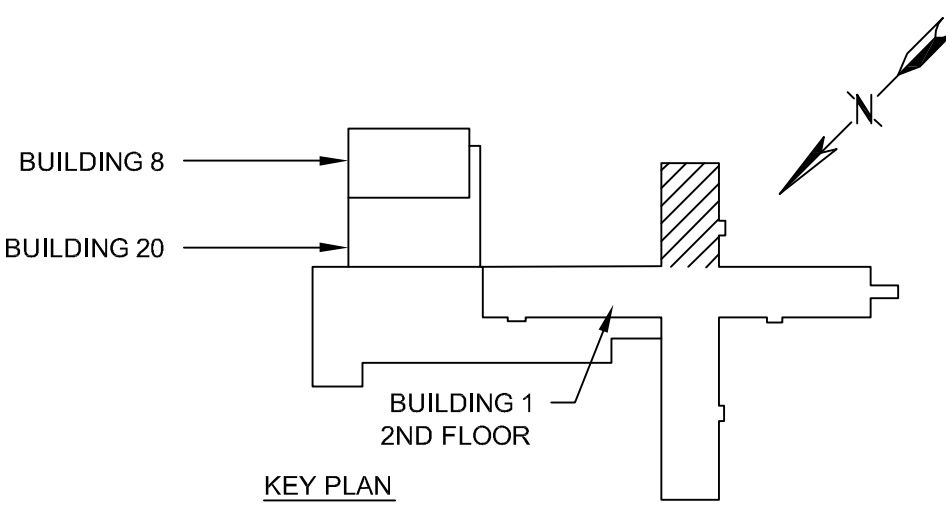
VERIFY SCALE!
THESE PRINTS MAY BE REDUCED. LINE BELOW MEASURES ONE INCH ON ORIGINAL DRAWING.
MODIFY SCALE ACCORDINGLY!



LEGEND	
FLOORING	
	CONFIRMED RESILIENT FLOORING LOCATIONS (VARIOUS), RACM.
	CONFIRMED MASTIC FLOORING LOCATIONS (VARIOUS), RACM.
	CONFIRMED RESILIENT FLOORING/MASTIC COMBO LOCATIONS (VARIOUS), RACM.

LEGEND	
	BLACK TRANSITE-LIKE COUNTERTOPS (X2.2), IN PLACE NON-FRIABLE.
	BLACK MASTIC ADHERING COUNTERTOPS TO BASE & WALL (M-8.3), IN PLACE NON-FRIABLE.
	PANEL MASTIC
	GRAY TRANSITE PANELS FOR COUNTERTOPS & SHELVES (X2.1), IN PLACE NON-FRIABLE.
	GRAY "POPCORN" STYLE SINK UNDERCOAT (X7.6), IN PLACE NON-FRIABLE
	FIRE DOOR. ASSUMED TO CONTAIN RACM INSULATION (I7.1). NON-FRIABLE.
	PHASE BOUNDARY

LEGEND	
	HORIZONTAL THERMAL SYSTEM INSULATION (TSI) ON PIPING (14.1 OR 14.2), BOTH RACM.
	VERTICAL TSI TO FLOOR ABOVE (14.1 OR 14.2), BOTH RACM.
	FLOOR STRUCTURAL RIB PIPE PENETRATION TO FLOOR ABOVE (SEE DETAIL 1 HA102)
	FLOOR PAN PIPE PENETRATION TO FLOOR ABOVE (SEE DETAIL 1 HA102)
	ADDITIONAL PIPE
MUDDED JOINT FITTINGS (MJF'S ON THERMAL SYSTEM FITTINGS (13.1), RACM.	
	FREE STANDING MJF.
	VERTICAL TSI WITH MJF.
	HORIZONTAL CONFLUENCE MJF.
	VERTICAL CONFLUENCE MJF.
NOTES	
A. LOCATIONS ARE APPROXIMATE. B. NOT ALL CEILING AREAS AND PIPE CHASES WERE ACCESSIBLE. C. FIBERGLASS INSULATION WAS OBSERVED IN MANY AREAS BUT IS NOT ILLUSTRATED HERE.	



BID DOCUMENTS

REVISIONS			
NO.	DESCRIPTION	DATE	BY
1	PIPE PENETRATIONS	12/6/13	JMW
2	PIPE & FLR LOCATIONS	12/12/13	JMW

VCI Program, Project and Construction Management

MORRISON MAIERLE, INC.
An Employee-Owned Company

Engineers
Surveyors
Scientists
Planners

125 Schoolhouse Loop
Kalispell, MT 59901

Phone: (406) 752-2216
Fax: (406) 752-2391



DRAWN BY: PNP
CHK'D. BY: TWR
APPR. BY: TCH
DATE: 05/2013

Q.A. REVIEW
BY: _____
DATE: _____

MILES CITY

MILES CITY ASBESTOS ABATEMENT

MONTANA

PHASE 6 PLAN

PROJECT NUMBER
5281.001

SHEET NUMBER
17

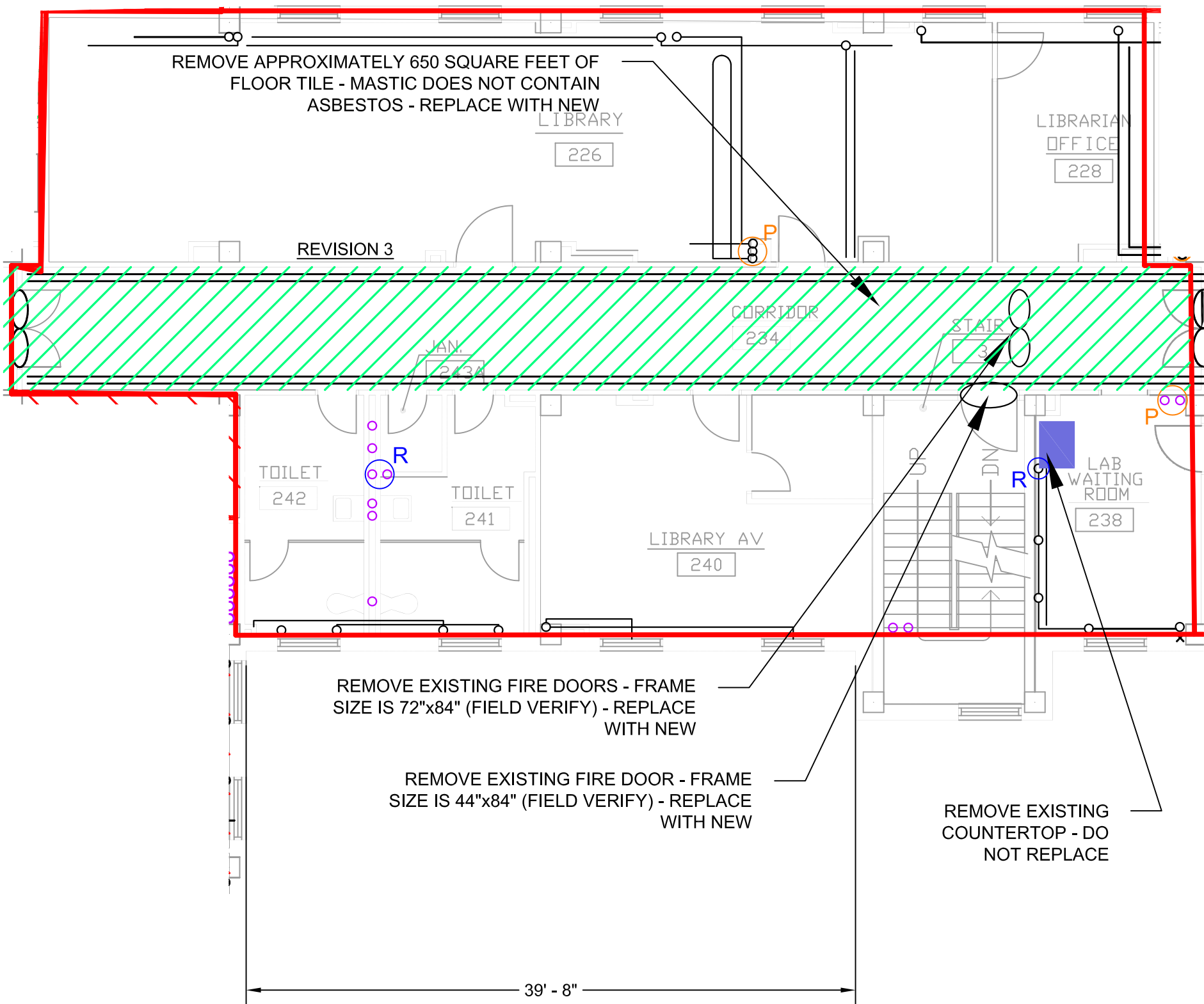
DRAWING NUMBER

HA406

PHASING PLAN NOTES:

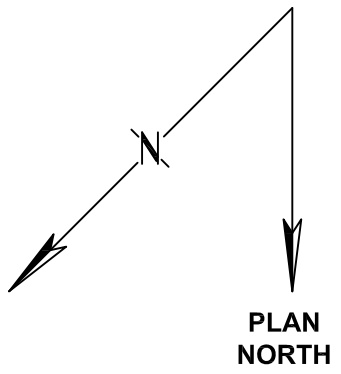
- PHASED ABATEMENT TO BE PERFORMED AS NUMERICALLY SEQUENCED.
- CONTRACTOR SHALL COORDINATE WITH THE RESIDENT ENGINEER 72 HOURS PRIOR TO COMMENCING THE SUBSEQUENT PHASE.
- THE VA AT ITS SOLE DISCRETION MAY CHANGE THE PHASING SEQUENCE WITHOUT CHANGE TO THE CONTRACT AND AT NO ADDITIONAL COST.
- THE CONTRACTOR SHALL NOT ENGAGE, DISCUSS, NOR INTERFERE WITH THE TENANTS. ALL COMMUNICATIONS WITH THE TENANTS SHALL BE CONVEYED AND CONDUCTED THROUGH THE RESIDENT ENGINEER.
- THE CONTRACTOR SHALL SUBMIT A DAILY SCHEDULE FOR EACH DISCRETE PHASE 48 HOURS PRIOR TO THE START OF THAT PHASE.
- THE CONTRACTOR SHALL NOTIFY THE RESIDENT ENGINEER IMMEDIATELY WHEN IT BELIEVES IT WILL NOT MEET COMPLETION OF THE CURRENT PHASED CONSTRUCTION AND COMMENCE THE SUBSEQUENT PHASE.

- PHASE 7 - REMOVE AND REINSTALL THE FOLLOWING THERMAL SYSTEM INSULATION:
- 65 PIPE JOINTS
 - 1,235 LINEAR FEET
 - 5 FLOOR PAN PENETRATIONS
 - 3 FLOOR STRUCTURAL RIB PENETRATIONS



1 PHASE 7 - SECOND FLOOR
SCALE: 1" = 8'-0"

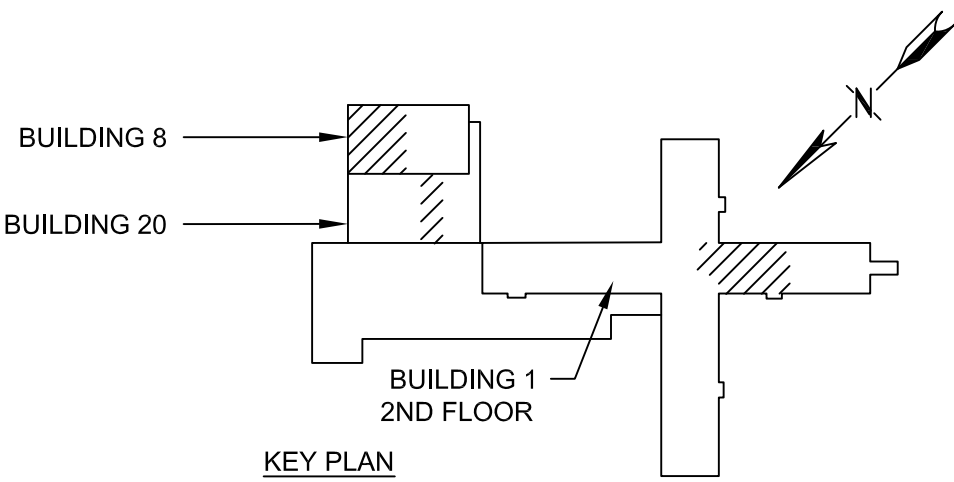
VERIFY SCALE!
THESE PRINTS MAY BE REDUCED. LINE BELOW MEASURES ONE INCH ON ORIGINAL DRAWING.
MODIFY SCALE ACCORDINGLY!



LEGEND	
FLOORING	
	CONFIRMED RESILIENT FLOORING LOCATIONS (VARIOUS). RACM.
	CONFIRMED MASTIC FLOORING LOCATIONS (VARIOUS). RACM.
	CONFIRMED RESILIENT FLOORING/MASTIC COMBO LOCATIONS (VARIOUS). RACM.

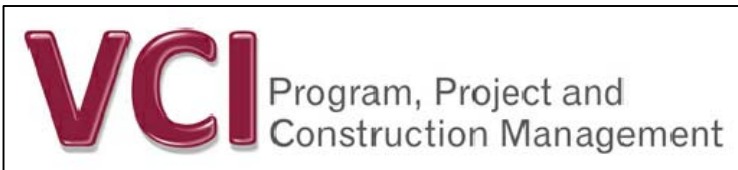
LEGEND	
	BLACK TRANSITE-LIKE COUNTERTOPS (X2.2). IN PLACE NON-FRIABLE.
	BLACK MASTIC ADHERING COUNTERTOPS TO BASE & WALL (M-8.3). IN PLACE NON-FRIABLE.
	PANEL MASTIC
	GRAY TRANSITE PANELS FOR COUNTERTOPS & SHELVES (X2.1). IN PLACE NON-FRIABLE.
	GRAY "POPCORN" STYLE SINK UNDERCOAT (X7.6). IN PLACE NON-FRIABLE
	FIRE DOOR. ASSUMED TO CONTAIN RACM INSULATION (I7.1). NON-FRIABLE.
	PHASE BOUNDARY

LEGEND	
	HORIZONTAL THERMAL SYSTEM INSULATION (TSI) ON PIPING (14.1 OR 14.2). BOTH RACM.
	VERTICAL TSI TO FLOOR ABOVE (14.1 OR 14.2). BOTH RACM.
	FLOOR STRUCTURAL RIB PIPE PENETRATION TO FLOOR ABOVE (SEE DETAIL 1 HA102)
	FLOOR PAN PIPE PENETRATION TO FLOOR ABOVE (SEE DETAIL 1 HA102)
	ADDITIONAL PIPE
MUDDIED JOINT FITTINGS (MJF'S ON THERMAL SYSTEM FITTINGS (13.1). RACM.	
	FREE STANDING MJF.
	VERTICAL TSI WITH MJF.
	HORIZONTAL CONFLUENCE MJF.
	VERTICAL CONFLUENCE MJF.
NOTES	
A. LOCATIONS ARE APPROXIMATE. B. NOT ALL CEILING AREAS AND PIPE CHASES WERE ACCESSIBLE. C. FIBERGLASS INSULATION WAS OBSERVED IN MANY AREAS BUT IS NOT ILLUSTRATED HERE.	



BID DOCUMENTS

REVISIONS			
NO.	DESCRIPTION	DATE	BY
1	PIPE PENETRATIONS	12/6/13	JMW
2	PIPE & FLR LOCATIONS	12/12/13	JMW
3	AREA CALLOUT	2/18/14	TCH



Engineers
Surveyors
Scientists
Planners

125 Schoolhouse Loop
Kalispell, MT 59901

Phone: (406) 752-2216
Fax: (406) 752-2391

COPYRIGHT © MORRISON-MAIERLE, INC., 2014

DRAWN BY: PNP
CHK'D. BY: TWR
APPR. BY: TCH
DATE: 05/2013
Q.A. REVIEW BY: _____
DATE: _____

MILES CITY

MILES CITY ASBESTOS ABATEMENT

MONTANA

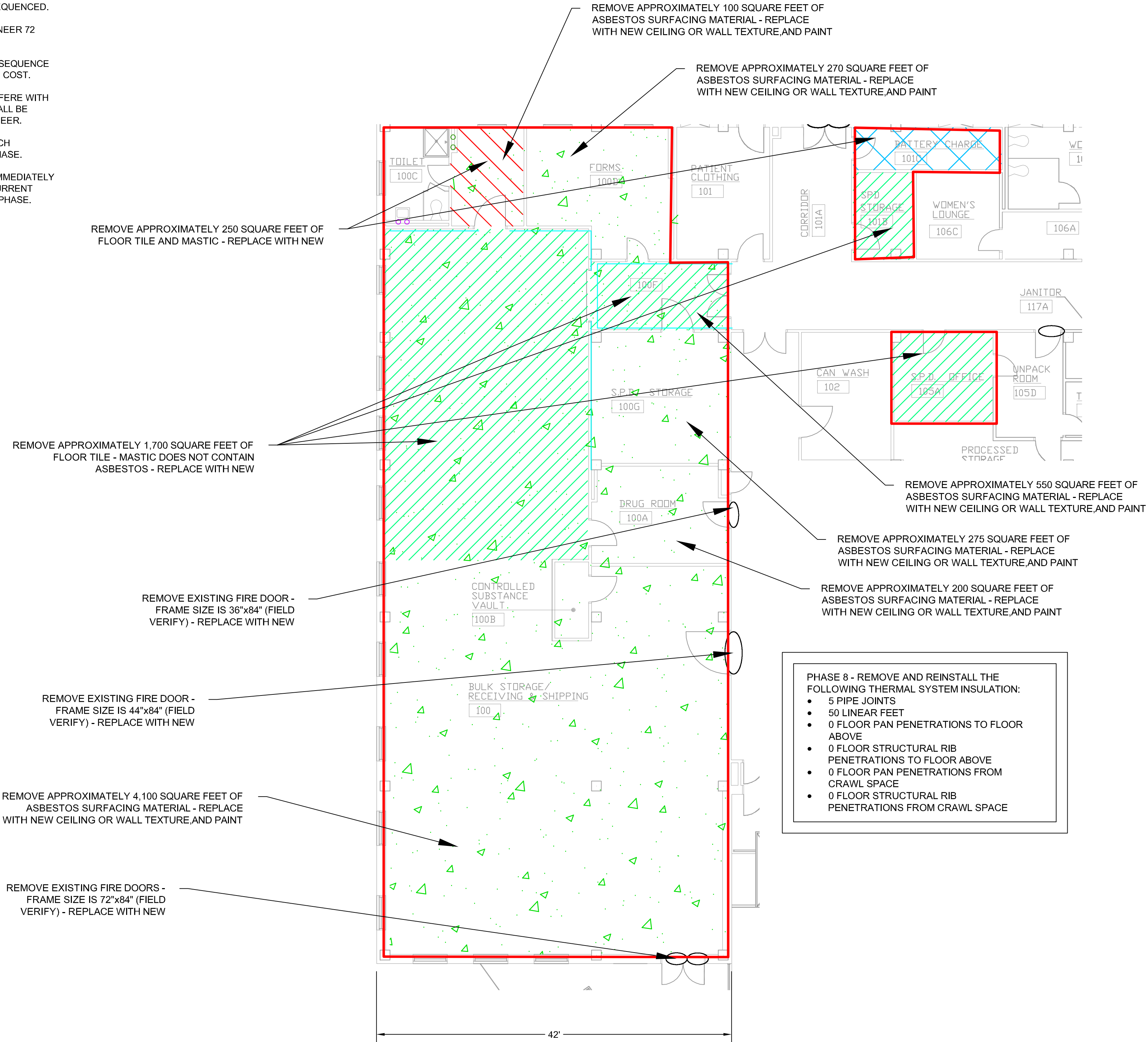
PHASE 7 PLAN

PROJECT NUMBER
5281.001
SHEET NUMBER
18

DRAWING NUMBER
HA407

PHASING PLAN NOTES:

- PHASED ABATEMENT TO BE PERFORMED AS NUMERICALLY SEQUENCED.
- CONTRACTOR SHALL COORDINATE WITH THE RESIDENT ENGINEER 72 HOURS PRIOR TO COMMENCING THE SUBSEQUENT PHASE.
- THE VA AT ITS SOLE DISCRETION MAY CHANGE THE PHASING SEQUENCE WITHOUT CHANGE TO THE CONTRACT AND AT NO ADDITIONAL COST.
- THE CONTRACTOR SHALL NOT ENGAGE, DISCUSS, NOR INTERFERE WITH THE TENANTS. ALL COMMUNICATIONS WITH THE TENANTS SHALL BE CONVEYED AND CONDUCTED THROUGH THE RESIDENT ENGINEER.
- THE CONTRACTOR SHALL SUBMIT A DAILY SCHEDULE FOR EACH DISCRETE PHASE 48 HOURS PRIOR TO THE START OF THAT PHASE.
- THE CONTRACTOR SHALL NOTIFY THE RESIDENT ENGINEER IMMEDIATELY WHEN IT BELIEVES IT WILL NOT MEET COMPLETION OF THE CURRENT PHASED CONSTRUCTION AND COMMENCE THE SUBSEQUENT PHASE.

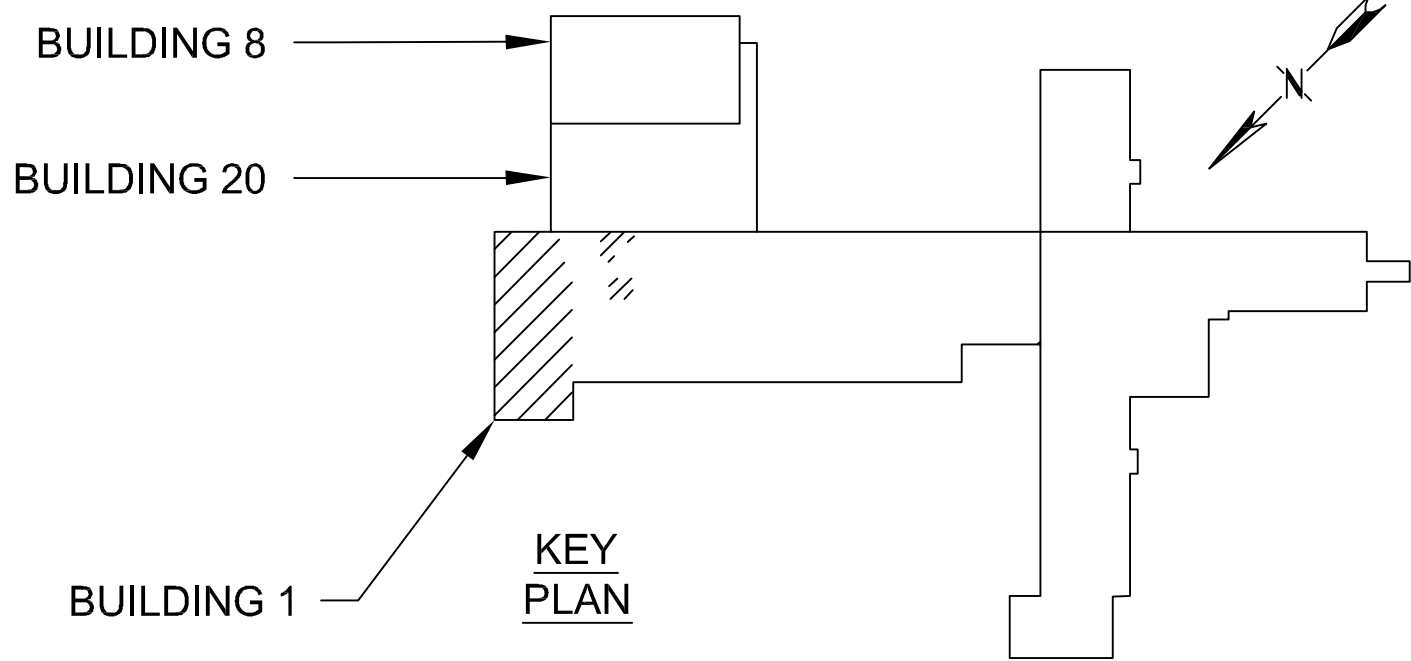


1 PHASE 8 - FIRST FLOOR
SCALE: 1" = 8'-0"

LEGEND	
FLOORING	
	CONFIRMED RESILIENT FLOORING LOCATIONS (VARIOUS). RACM.
	CONFIRMED MASTIC FLOORING LOCATIONS (VARIOUS). RACM.
	CONFIRMED RESILIENT FLOORING/MASTIC COMBO LOCATIONS (VARIOUS). RACM.

LEGEND	
	BLACK TRANSITE-LIKE COUNTERTOPS (X2.2). IN PLACE NON-FRIABLE.
	BLACK MASTIC ADHERING COUNTERTOPS TO BASE & WALL (M-8.3). IN PLACE NON-FRIABLE.
	PANEL MASTIC
	GRAY TRANSITE PANELS FOR COUNTERTOPS & SHELVES (X2.1). IN PLACE NON-FRIABLE.
	GRAY "POPCORN" STYLE SINK UNDERCOAT (X7.6). IN PLACE NON-FRIABLE
	FIRE DOOR. ASSUMED TO CONTAIN RACM INSULATION (I7.1). NON-FRIABLE.
	PHASE BOUNDARY

LEGEND	
	HORIZONTAL THERMAL SYSTEM INSULATION (TSI) ON PIPING (14.1 OR 14.2). BOTH RACM.
	VERTICAL TSI TO FLOOR ABOVE (14.1 OR 14.2). BOTH RACM.
	FLOOR STRUCTURAL RIB PIPE PENETRATION TO FLOOR ABOVE (SEE DETAIL 1 HA102)
	FLOOR STRUCTURAL RIB PIPE PENETRATION FROM CRAWL SPACE (SEE DETAIL 1 HA102)
	FLOOR PAN PIPE PENETRATION FROM CRAWL SPACE (SEE DETAIL 1 HA102)
	FLOOR PAN PIPE PENETRATION TO FLOOR ABOVE (SEE DETAIL 1 HA102)
	ADDITIONAL PIPE
	ADDITIONAL CRAWL SPACE PIPING
MUDDED JOINT FITTINGS (MJF'S ON THERMAL SYSTEM FITTINGS (13.1). RACM.	
	FREE STANDING MJF.
	VERTICAL TSI WITH MJF.
	HORIZONTAL CONFLUENCE MJF.
	VERTICAL CONFLUENCE MJF.
NOTES	
A. LOCATIONS ARE APPROXIMATE. B. NOT ALL CEILING AREAS AND PIPE CHASES WERE ACCESSIBLE. C. FIBERGLASS INSULATION WAS OBSERVED IN MANY AREAS BUT IS NOT ILLUSTRATED HERE.	



REVISIONS			
NO.	DESCRIPTION	DATE	BY
1	PIPE PENETRATIONS	12/6/13	JMW
2	PIPE & FLR LOCATIONS	12/12/13	JMW



Engineers
Surveyors
Scientists
Planners

125 Schoolhouse Loop
Kalispell, MT 59901

Phone: (406) 752-2216
Fax: (406) 752-2391



DRAWN BY: PNP
CHK'D BY: TWR
APPR. BY: TCH
DATE: 05/2013
Q.A. REVIEW
BY: _____
DATE: _____

MILES CITY

MILES CITY ASBESTOS ABATEMENT

MONTANA

PHASE 8 PLAN

PROJECT NUMBER
5281.001

SHEET NUMBER
19

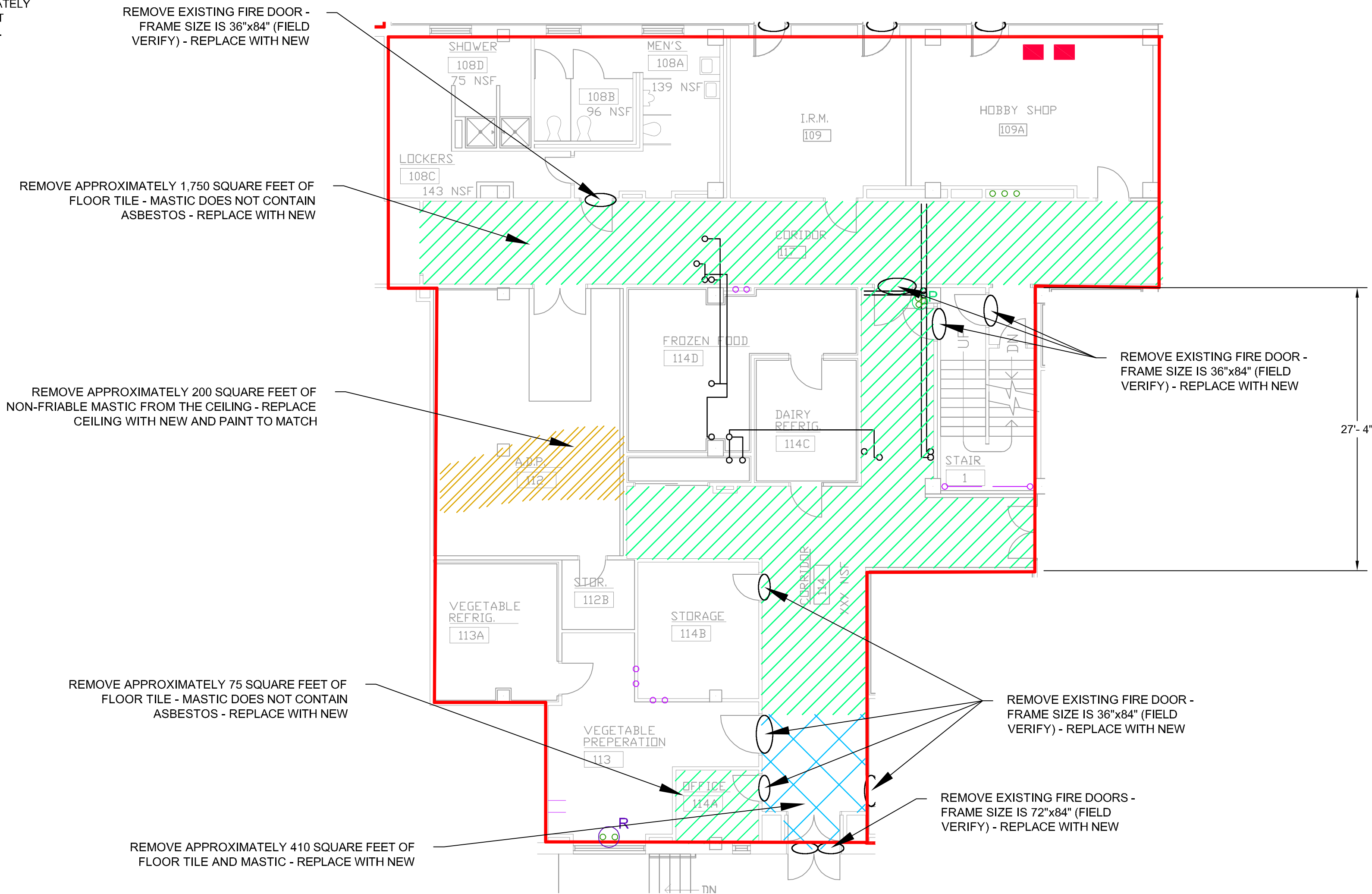
DRAWING NUMBER

HA408

PHASING PLAN NOTES:

- PHASED ABATEMENT TO BE PERFORMED AS NUMERICALLY SEQUENCED.
- CONTRACTOR SHALL COORDINATE WITH THE RESIDENT ENGINEER 72 HOURS PRIOR TO COMMENCING THE SUBSEQUENT PHASE.
- THE VA AT ITS SOLE DISCRETION MAY CHANGE THE PHASING SEQUENCE WITHOUT CHANGE TO THE CONTRACT AND AT NO ADDITIONAL COST.
- THE CONTRACTOR SHALL NOT ENGAGE, DISCUSS, NOR INTERFERE WITH THE TENANTS. ALL COMMUNICATIONS WITH THE TENANTS SHALL BE CONVEYED AND CONDUCTED THROUGH THE RESIDENT ENGINEER.
- THE CONTRACTOR SHALL SUBMIT A DAILY SCHEDULE FOR EACH DISCRETE PHASE 48 HOURS PRIOR TO THE START OF THAT PHASE.
- THE CONTRACTOR SHALL NOTIFY THE RESIDENT ENGINEER IMMEDIATELY WHEN IT BELIEVES IT WILL NOT MEET COMPLETION OF THE CURRENT PHASED CONSTRUCTION AND COMMENCE THE SUBSEQUENT PHASE.

- PHASE 9 - REMOVE AND REINSTALL THE FOLLOWING THERMAL SYSTEM INSULATION:
- 60 PIPE JOINTS
 - 440 LINEAR FEET
 - 0 FLOOR PAN PENETRATIONS TO FLOOR ABOVE
 - 0 FLOOR STRUCTURAL RIB PENETRATIONS TO FLOOR ABOVE
 - 5 FLOOR PAN PENETRATIONS FROM CRAWL SPACE
 - 4 FLOOR STRUCTURAL RIB PENETRATIONS FROM CRAWL SPACE

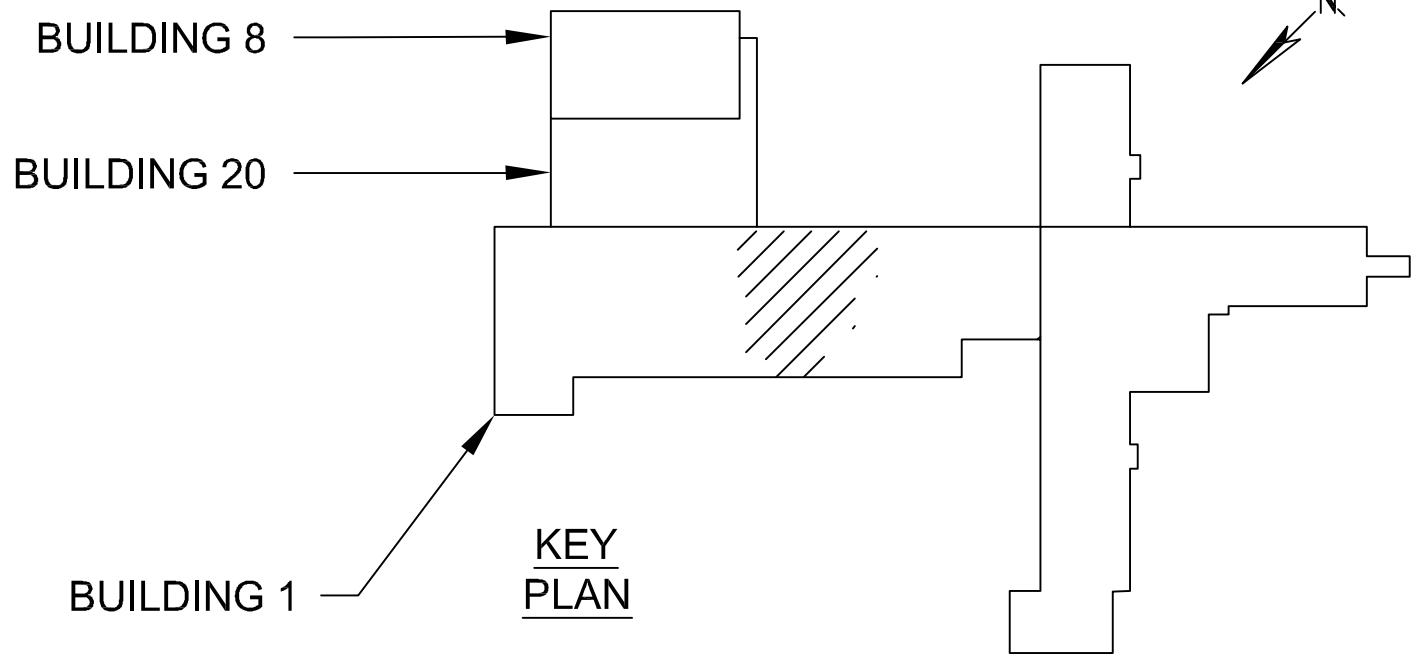


1 PHASE 9 - FIRST FLOOR
SCALE: 1" = 8'-0"

LEGEND	
FLOORING	
	CONFIRMED RESILIENT FLOORING LOCATIONS (VARIOUS). RACM.
	CONFIRMED MASTIC FLOORING LOCATIONS (VARIOUS). RACM.
	CONFIRMED RESILIENT FLOORING/MASTIC COMBO LOCATIONS (VARIOUS). RACM.

LEGEND	
	BLACK TRANSITE-LIKE COUNTERTOPS (X2.2). IN PLACE NON-FRIABLE.
	BLACK MASTIC ADHERING COUNTERTOPS TO BASE & WALL (M-8.3). IN PLACE NON-FRIABLE.
	PANEL MASTIC
	GRAY TRANSITE PANELS FOR COUNTERTOPS & SHELVES (X2.1). IN PLACE NON-FRIABLE.
	GRAY "POPCORN" STYLE SINK UNDERCOAT (X7.6). IN PLACE NON-FRIABLE
	FIRE DOOR. ASSUMED TO CONTAIN RACM INSULATION (I7.1). NON-FRIABLE.
	PHASE BOUNDARY

LEGEND	
	HORIZONTAL THERMAL SYSTEM INSULATION (TSI) ON PIPING (14.1 OR 14.2). BOTH RACM.
	VERTICAL TSI TO FLOOR ABOVE (14.1 OR 14.2). BOTH RACM.
	FLOOR STRUCTURAL RIB PIPE PENETRATION TO FLOOR ABOVE (SEE DETAIL 1 HA102)
	FLOOR STRUCTURAL RIB PIPE PENETRATION FROM CRAWL SPACE (SEE DETAIL 1 HA102)
	FLOOR PAN PIPE PENETRATION FROM CRAWL SPACE (SEE DETAIL 1 HA102)
	FLOOR PAN PIPE PENETRATION TO FLOOR ABOVE (SEE DETAIL 1 HA102)
	ADDITIONAL PIPE
	ADDITIONAL CRAWL SPACE PIPING
MUDDED JOINT FITTINGS (MJF'S ON THERMAL SYSTEM FITTINGS (13.1). RACM.	
	FREE STANDING MJF.
	VERTICAL TSI WITH MJF.
	HORIZONTAL CONFLUENCE MJF.
	VERTICAL CONFLUENCE MJF.
NOTES	
A. LOCATIONS ARE APPROXIMATE. B. NOT ALL CEILING AREAS AND PIPE CHASES WERE ACCESSIBLE. C. FIBERGLASS INSULATION WAS OBSERVED IN MANY AREAS BUT IS NOT ILLUSTRATED HERE.	



REVISIONS			
NO.	DESCRIPTION	DATE	BY
1	PIPE PENETRATIONS	12/6/13	JMW
2	PIPE & FLR LOCATIONS	12/12/13	JMW

VCI Program, Project and Construction Management

MORRISON MAIERLE, INC.
An Employee-Owned Company

Engineers
Surveyors
Scientists
Planners

125 Schoolhouse Loop
Kalispell, MT 59901

Phone: (406) 752-2216
Fax: (406) 752-2391



DRAWN BY: PNP
CHK'D. BY: TWR
APPR. BY: TCH
DATE: 05/2013

Q.A. REVIEW
BY: _____
DATE: _____

MILES CITY

MILES CITY ASBESTOS ABATEMENT

MONTANA

PHASE 9 PLAN

PROJECT NUMBER

5281.001

SHEET NUMBER

20

DRAWING NUMBER

HA409