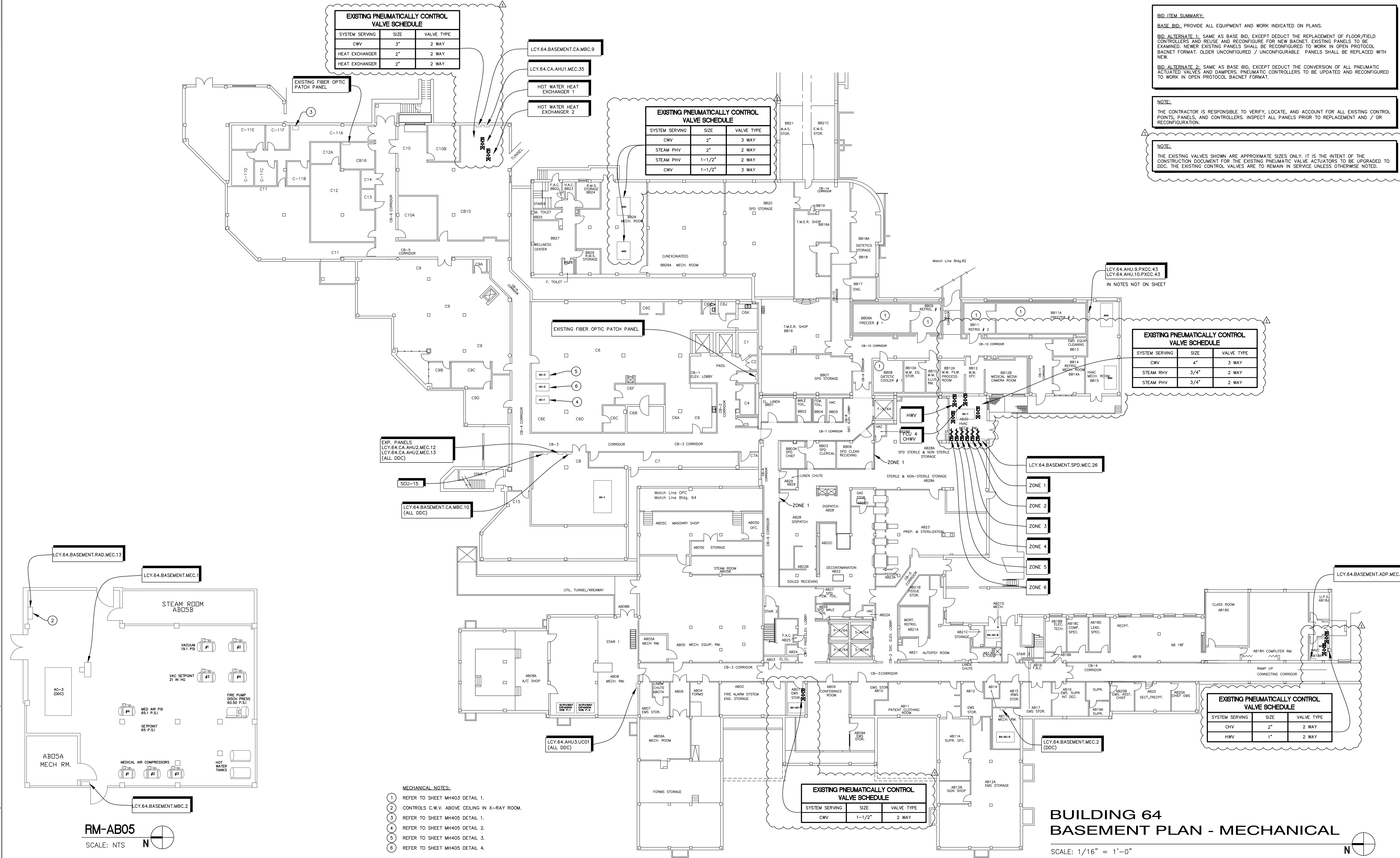


three inches = one foot
one and one half inches = one foot
one inch = one foot
three quarters inch = one foot
three quarters inch = one foot
one half inch = one foot
one half inch = one foot
three eighths inch = one foot
one quarter inch = one foot
one eighth inch = one foot

K:\201504 VA Lake City Upgrade EMS\1504 64 M104.dwg 2-27-14 06:27:50 PM dslanley



CONSULTANTS:

Mark E. Armiller, P.E.
Florida PE No. 53973

ARCHITECT/ENGINEERS:

MES GROUP

550 North Rao Street
Suite 203, Tampa, FL 33609
813.289.4700
COA # 8304

Drawing Title
BUILDIN 64 BASEMENT FLOOR PLAN - MECHANICAL

Approved Project Director

Project Title
UPGRADE EMS

Location
LAKE CITY, FLORIDA

Date
01/03/2014

Checked
MEA

Drawn
DKS

Project Number
573A-12-200

Building Number

Drawing Number
MH105

Dwg. 7 of 30

FINAL BID DOCUMENTS

Office of
Construction
and Facilities
Management

Department of
Veterans Affairs