

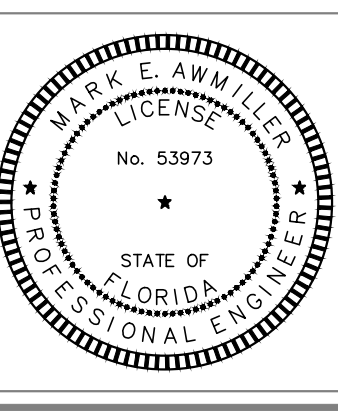
three inches = one foot
one and one half inches = one foot
one inch = one foot
three quarters inch = one foot
one half inch = one foot
three eighths inch = one foot
one quarter inch = one foot
one eighth inch = one foot
one sixteenth inch = one foot

K:\201504 VA Lake City Upgrade EMS\1504 64 M104.dwg 2-27-14 06:28:23 PM dslanley

ADDENDUM 1 REVISION	2-27-14
Revisions:	Date

CONSULTANTS:

Mark E. Armiller, P.E.
Florida PB No. 53973



ARCHITECT/ENGINEERS:

MES
GROUP

550 North Reo Street
Suite 203, Tampa, FL 33609
813.289.4700
COA # 8304

Drawing Title
**BUILDING 64 SECOND FLOOR
PLAN - MECHANICAL**

Approved Project Director

Project Title
UPGRADE EMS

Project Number
573A-12-200
Building Number

Location
LAKE CITY, FLORIDA

Date
01/03/2014

Checked
MEA

Drawn
DKS

Drawing Number
MH107
Dwg. 9 of 30

FINAL BID DOCUMENTS

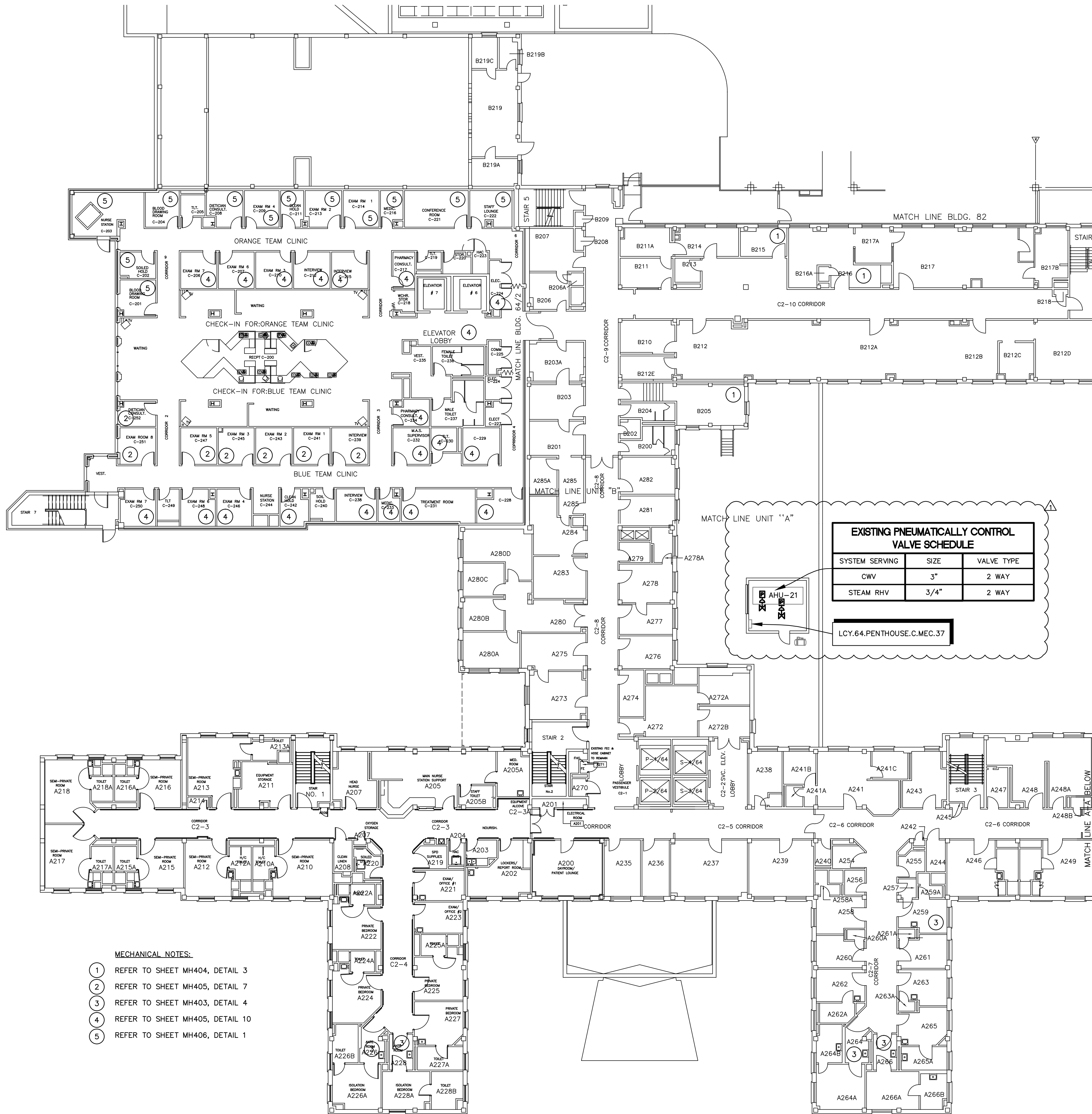
Office of
Construction
and Facilities
Management



BID ITEM SUMMARY:
BASE BID: PROVIDE ALL EQUIPMENT AND WORK INDICATED ON PLANS.
BID ALTERNATE 1: SAME AS BASE BID, EXCEPT DEDUCT THE REPLACEMENT OF FLOOR/FIELD CONTROLLERS AND REUSE AND RECONFIGURE FOR NEW BAGNET. EXISTING PANELS TO BE EXAMINED. NEWER EXISTING PANELS SHALL BE RECONFIGURED TO WORK IN OPEN PROTOCOL BAGNET FORMAT. OLDER UNCONFIGURED / UNCONFIGURABLE PANELS SHALL BE REPLACED WITH NEW.
BID ALTERNATE 2: SAME AS BASE BID, EXCEPT DEDUCT THE CONVERSION OF ALL PNEUMATIC ACTUATED VALVES AND DAMPERS. PNEUMATIC CONTROLLERS TO BE UPDATED AND RECONFIGURED TO WORK IN OPEN PROTOCOL BAGNET FORMAT.

NOTE:
THE CONTRACTOR IS RESPONSIBLE TO VERIFY, LOCATE, AND ACCOUNT FOR ALL EXISTING CONTROL POINTS, PANELS, AND CONTROLLERS. INSPECT ALL PANELS PRIOR TO REPLACEMENT AND / OR RECONFIGURATION.

NOTE:
THE EXISTING VALVES SHOWN ARE APPROXIMATE SIZES ONLY. IT IS THE INTENT OF THE CONSTRUCTION DOCUMENT FOR THE EXISTING PNEUMATIC VALVE ACTUATORS TO BE UPGRADED TO DDC. THE EXISTING CONTROL VALVES ARE TO REMAIN IN SERVICE UNLESS OTHERWISE NOTED.



BUILDING 64 SECOND FLOOR PLAN - MECHANICAL

SCALE: 1/16" = 1'-0"

