

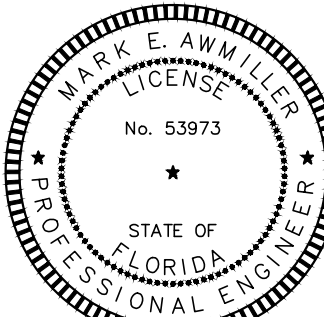
three inches = one foot  
one and one half inches = one foot  
one inch = one foot  
three quarters inch = one foot  
one half inch = one foot  
one quarter inch = one foot  
one eighth inch = one foot  
one eighth inch = one foot

K:\201504 VA Lake City Upgrade EMS\1504 64 M104.dwg 2-27-14 06:28:33 PM dslanley

ADDENDUM 1 REVISION	2-27-14
Revisions:	Date

CONSULTANTS:
--------------

Mark E. Awwiller, P.E.  
Florida PE No. 53973



ARCHITECT/ENGINEERS:

**MES GROUP**

550 North Reo Street  
Suite 203, Tampa, FL 33609  
813.289.4700  
COA # 8304

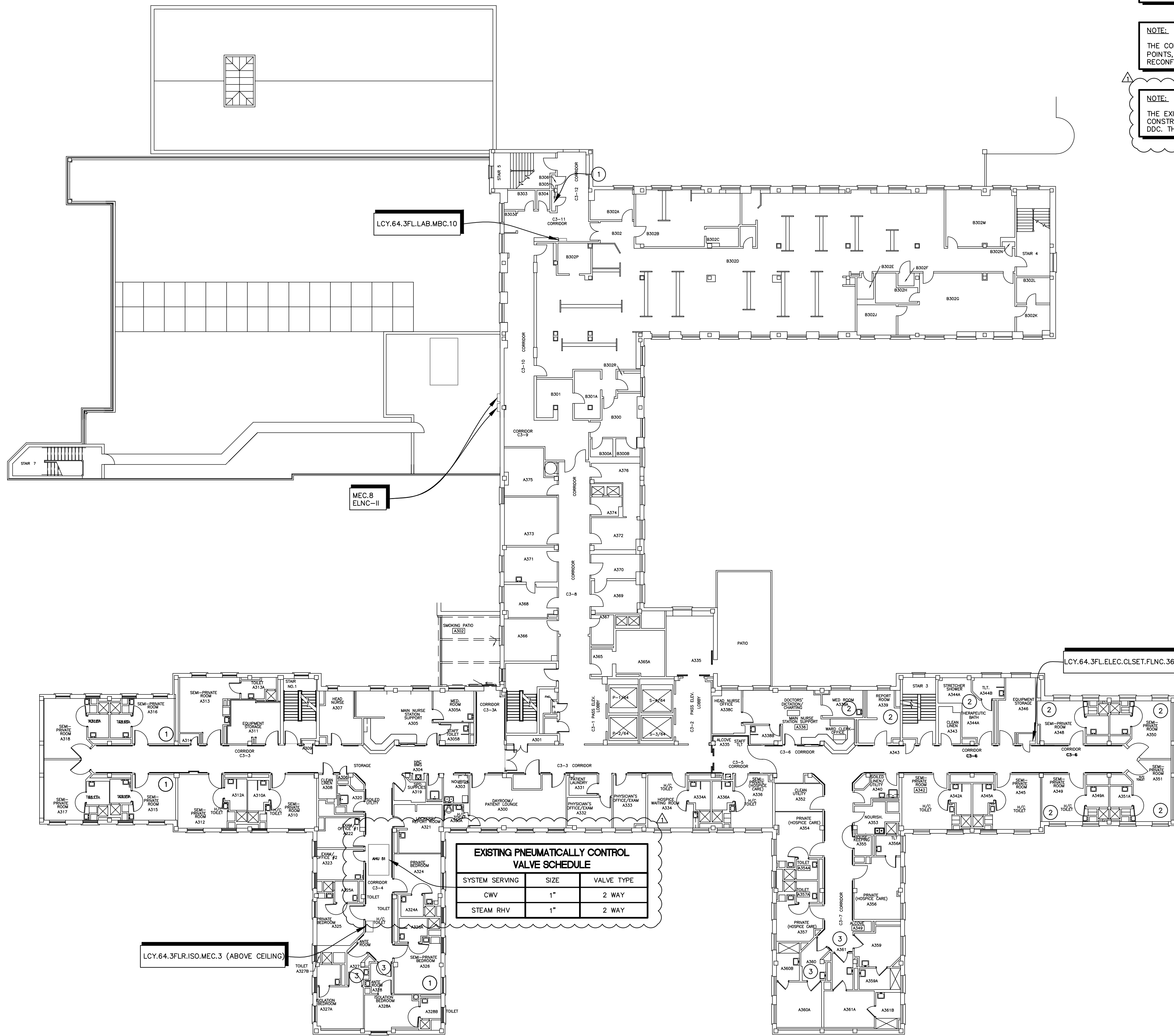
Drawing Title	BUILDING 64 THIRD FLOOR PLAN - MECHANICAL
Approved Project Director	

Project Title	UPGRADE EMS	Project Number	573A-12-200
Location	LAKE CITY, FLORIDA	Building Number	
Date	01/03/2014	Checked	MEA
Drawn	DKS	Drawing Number	MH108
		Dwg.	10 of 30

FINAL BID DOCUMENTS

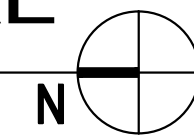
Office of Construction and Facilities Management

Department of Veterans Affairs



BUILDING 64  
THIRD FLOOR PLAN - MECHANICAL

SCALE: 1/16" = 1'-0"



**BID ITEM SUMMARY:**

**BASE BID:** PROVIDE ALL EQUIPMENT AND WORK INDICATED ON PLANS.

**BID ALTERNATE 1:** SAME AS BASE BID, EXCEPT DEDUCT THE REPLACEMENT OF FLOOR/FIELD CONTROLLERS AND REUSE AND RECONFIGURE FOR NEW BAGNET. EXISTING PANELS TO BE EXAMINED. NEWER EXISTING PANELS SHALL BE RECONFIGURED TO WORK IN OPEN PROTOCOL BAGNET FORMAT. OLDER UNCONFIGURED / UNCONFIGURABLE PANELS SHALL BE REPLACED WITH NEW.

**BID ALTERNATE 2:** SAME AS BASE BID, EXCEPT DEDUCT THE CONVERSION OF ALL PNEUMATIC ACTUATED VALVES AND DAMPERS. PNEUMATIC CONTROLLERS TO BE UPDATED AND RECONFIGURED TO WORK IN OPEN PROTOCOL BAGNET FORMAT.

**NOTE:**

THE CONTRACTOR IS RESPONSIBLE TO VERIFY, LOCATE, AND ACCOUNT FOR ALL EXISTING CONTROL POINTS, PANELS, AND CONTROLLERS. INSPECT ALL PANELS PRIOR TO REPLACEMENT AND / OR RECONFIGURATION.

**NOTE:**

THE EXISTING VALVES SHOWN ARE APPROXIMATE SIZES ONLY. IT IS THE INTENT OF THE CONSTRUCTION DOCUMENT FOR THE EXISTING PNEUMATIC VALVE ACTUATORS TO BE UPGRADED TO DDC. THE EXISTING CONTROL VALVES ARE TO REMAIN IN SERVICE UNLESS OTHERWISE NOTED.