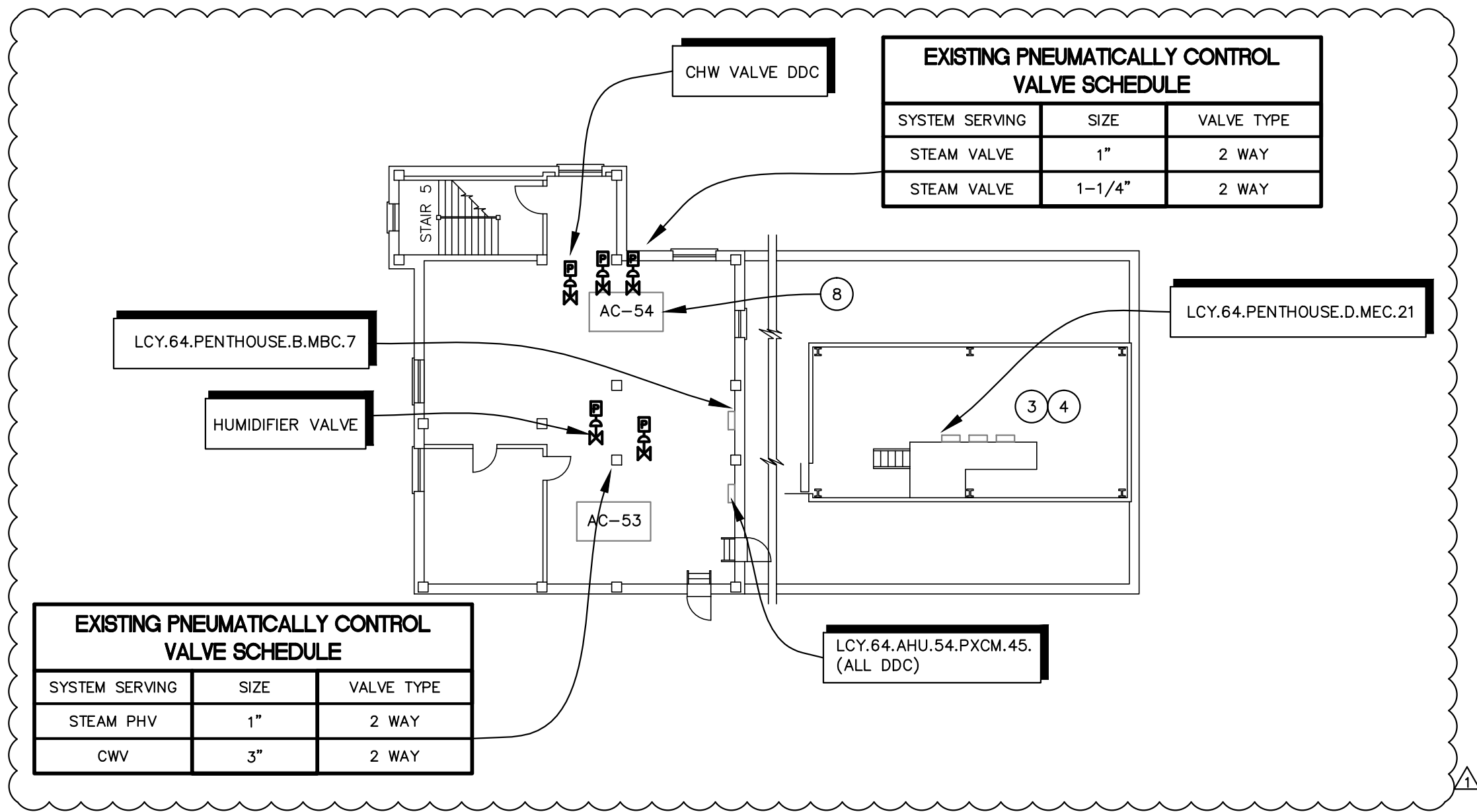
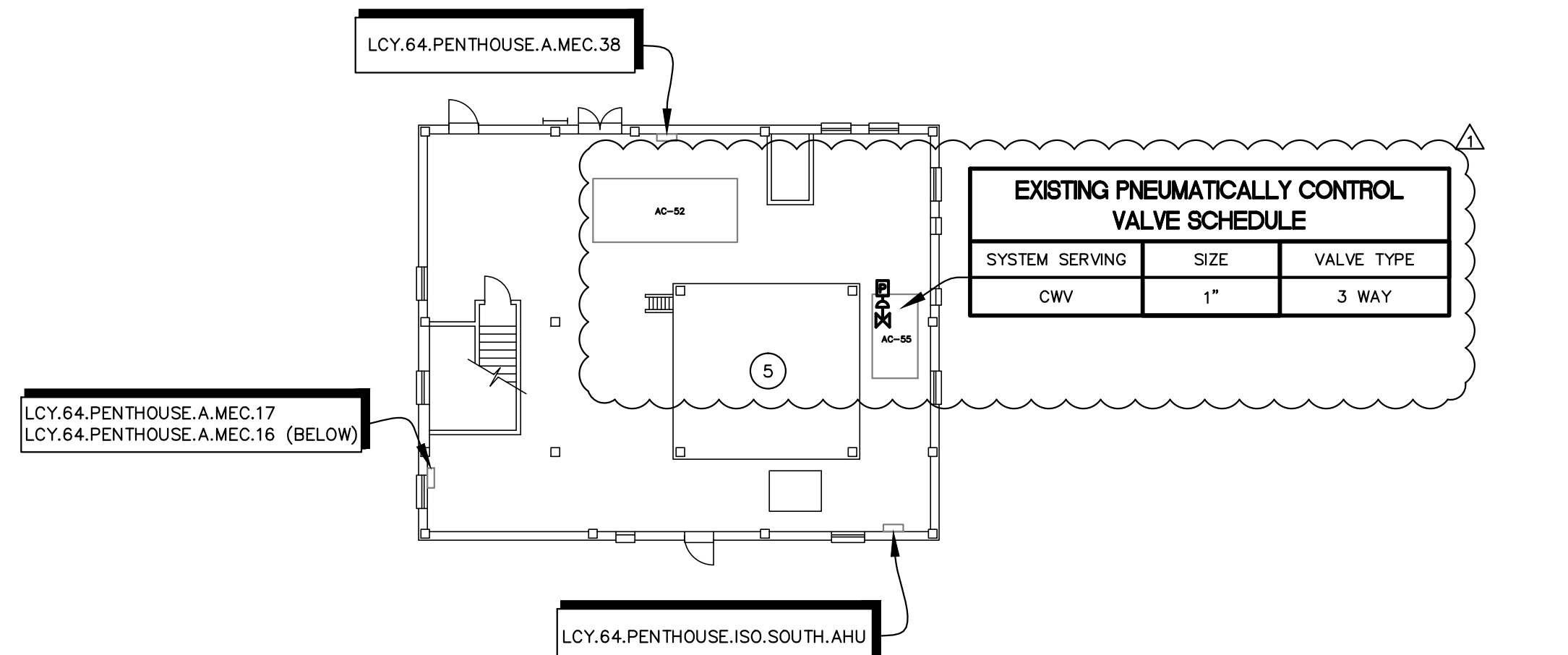


three inches = one foot
one and one half inches = one foot
one inch = one foot
three quarters inch = one foot
three eighths inch = one foot
one half inch = one foot
three eighths inch = one foot
one quarter inch = one foot
one eighth inch = one foot
one eighth inch = one foot
K:\201504 VA Lake City Upgrade EMS\1504 64 M104.dwg 2-27-14 06:28:46 PM dslanley



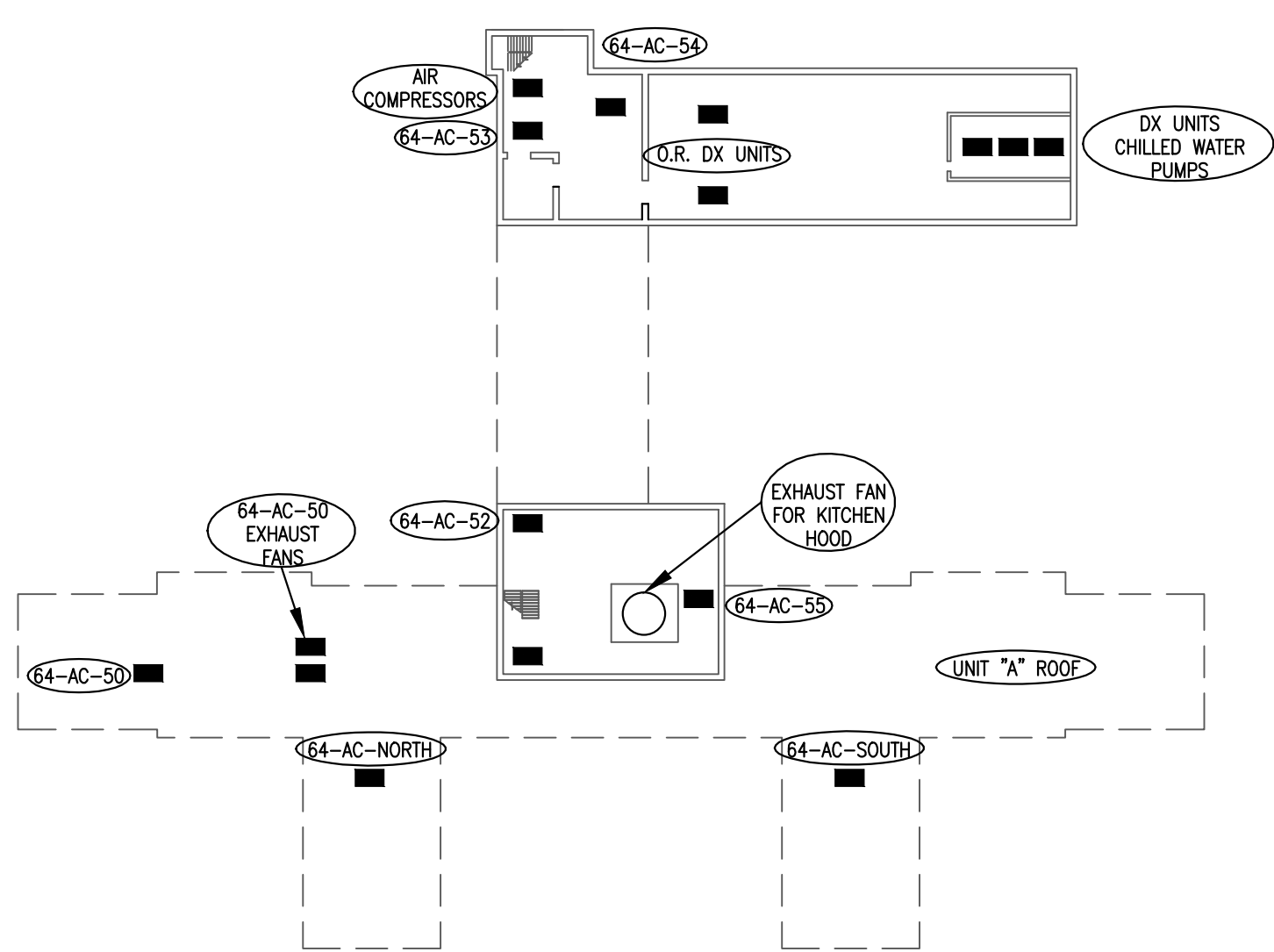
BUILDING 64 PENTHOUSES B & D - MECHANICAL

SCALE: 1/16" = 1'-0"



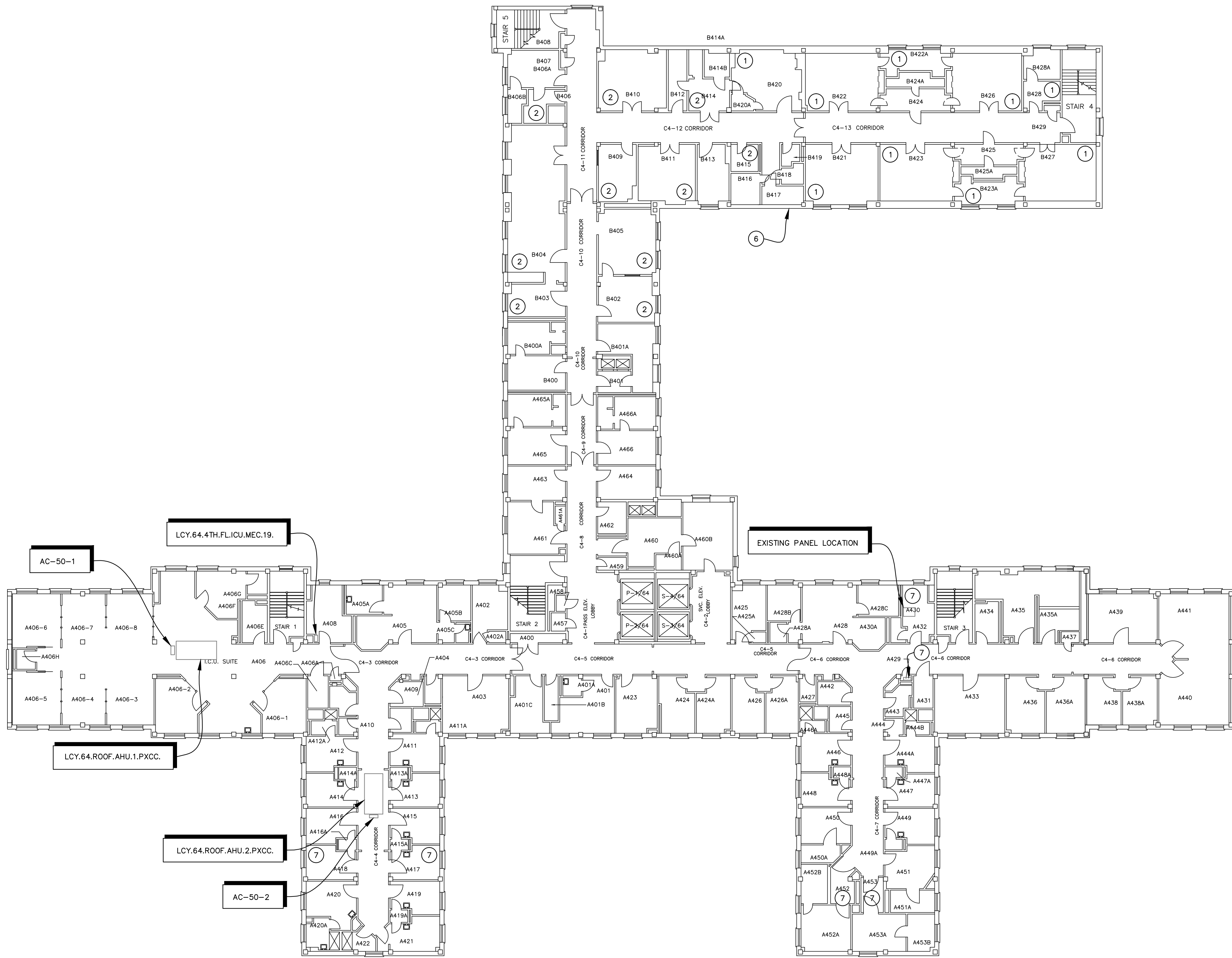
BUILDING 64 PENTHOUSE A - MECHANICAL

SCALE: 1/16" = 1'-0"



PENTHOUSE LAYOUT

SCALE: NTS



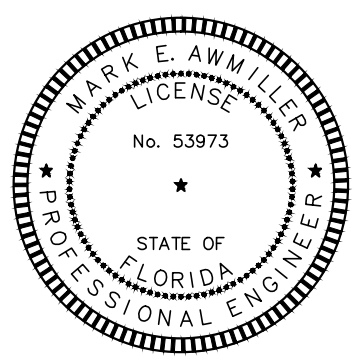
BUILDING 64 FOURTH FLOOR PLAN - MECHANICAL

SCALE: 1/16" = 1'-0"

- MECHANICAL NOTES:
- 1 REFER TO SHEET MH404 DETAIL 1
 - 2 REFER TO SHEET MH404 DETAIL 2
 - 3 REFER TO SHEET MH403 DETAIL 2
 - 4 REFER TO SHEET MH403 DETAIL 6
 - 5 REFER TO SHEET MH403 DETAIL 10
 - 6 REFER TO SHEET MH404 DETAIL 7
 - 7 REFER TO SHEET MH403 DETAIL 4
 - 8 REFER TO SHEET MH404 DETAIL 7

CONSULTANTS:

Mark E. Armiller, P.E.
Florida PB No. 53973



ARCHITECT/ENGINEERS:

MES
GROUP

550 North Reo Street
Suite 203, Tampa, FL 33609
813.289.4700
COA # 8304

Drawing Title

**BUILDING 64 FOURTH FLOOR
PLAN - MECHANICAL**

Approved Project Director

Project Title

UPGRADE EMS

Project Number

573A-12-200

Building Number

BUILDING

Location

LAKE CITY, FLORIDA

Date

01/03/2014

Checked

MEA

Drawn

DKS

Drawing Number

MH109

Dwg. 11 of 30

FINAL BID DOCUMENTS

Office of
Construction
and Facilities
Management

Department of
Veterans Affairs