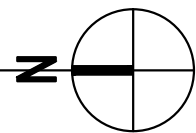


three inches = one foot
one and one half inches = one foot
one inch = one foot
three quarters inch = one foot
one half inch = one foot
three eighths inch = one foot
one quarter inch = one foot
one eighth inch = one foot

K:\201504 VA Lake City Upgrade EMS\1504 74 M112.dwg 2-27-14 06:29:13 PM dslanley

BUILDING 74
FLOOR PLAN - MECHANICAL
BASEMENT

SCALE: 1/16" = 1'-0"

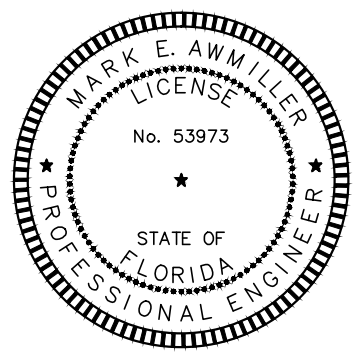


MECHANICAL NOTES:

- 1 REFER TO SHEET MH407 DETAIL 1
- 2 REFER TO SHEET MH407 DETAIL 2
- 3 REFER TO SHEET MH407 DETAIL 3
- 4 REFER TO SHEET MH407 DETAIL 4
- 5 REFER TO SHEET MH407 DETAIL 5

CONSULTANTS:

Mark E. Armiller, P.E.
Florida PE No. 53973



ARCHITECT/ENGINEERS:

MES
GROUP

550 North Reo Street
Suite 203, Tampa, FL 33609
813.289.4700
COA # 8304

Drawing Title

BUILDING 74 FLOOR
PLAN - MECHANICAL

Approved Project Director

Project Title

UPGRADE EMS

Project Number

573A-12-200

Building Number

Drawing Number

MH110

Dwg. 12 of 30

Location

LAKE CITY, FLORIDA

Date

01/03/2014

Checked

MEA

Drawn

DKS

FINAL BID DOCUMENTS

Office of
Construction
and Facilities
Management



BID ITEM SUMMARY:

BASE BID: PROVIDE ALL EQUIPMENT AND WORK INDICATED ON PLANS.

BID ALTERNATE 1: SAME AS BASE BID, EXCEPT DEDUCT THE REPLACEMENT OF FLOOR/FIELD CONTROLLERS AND REUSE AND RECONFIGURE FOR NEW BAGNET. EXISTING PANELS TO BE EXAMINED. NEWER EXISTING PANELS SHALL BE RECONFIGURED TO WORK IN OPEN PROTOCOL BAGNET FORMAT. OLDER UNCONFIGURABLE / UNCONFIGURABLE PANELS SHALL BE REPLACED WITH NEW.

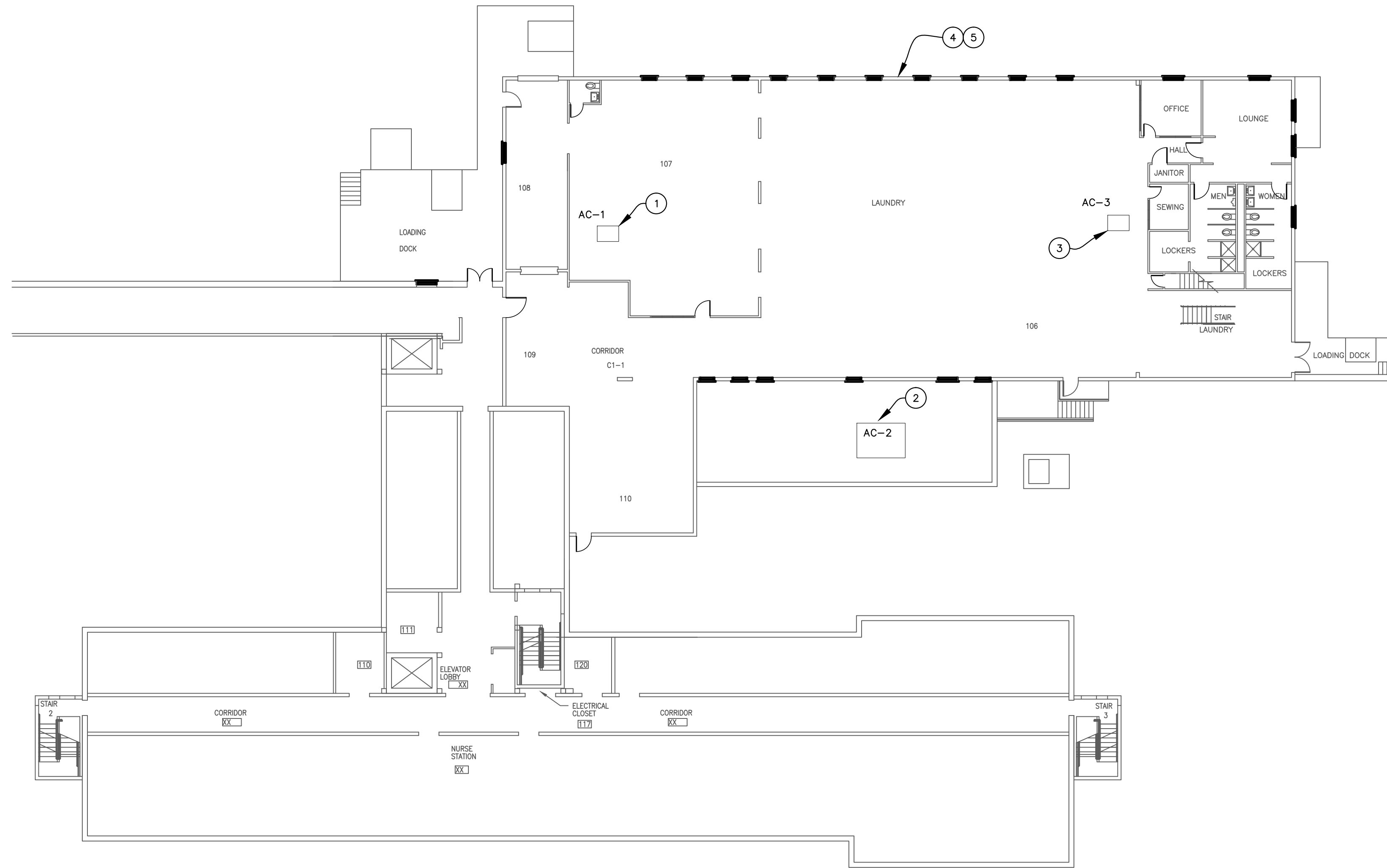
BID ALTERNATE 2: SAME AS BASE BID, EXCEPT DEDUCT THE CONVERSION OF ALL PNEUMATIC ACTUATED VALVES AND DAMPERS. PNEUMATIC CONTROLLERS TO BE UPDATED AND RECONFIGURED TO WORK IN OPEN PROTOCOL BAGNET FORMAT.

NOTE:

THE CONTRACTOR IS RESPONSIBLE TO VERIFY, LOCATE, AND ACCOUNT FOR ALL EXISTING CONTROL POINTS, PANELS, AND CONTROLLERS. INSPECT ALL PANELS PRIOR TO REPLACEMENT AND / OR RECONFIGURATION.

NOTE:

THE EXISTING VALVES SHOWN ARE APPROXIMATE SIZES ONLY. IT IS THE INTENT OF THE CONSTRUCTION DOCUMENT FOR THE EXISTING PNEUMATIC VALVE ACTUATORS TO BE UPGRADED TO DDC. THE EXISTING CONTROL VALVES ARE TO REMAIN IN SERVICE UNLESS OTHERWISE NOTED.



BUILDING 74
FLOOR PLAN - MECHANICAL
FIRST FLOOR

SCALE: 1/16" = 1'-0"

