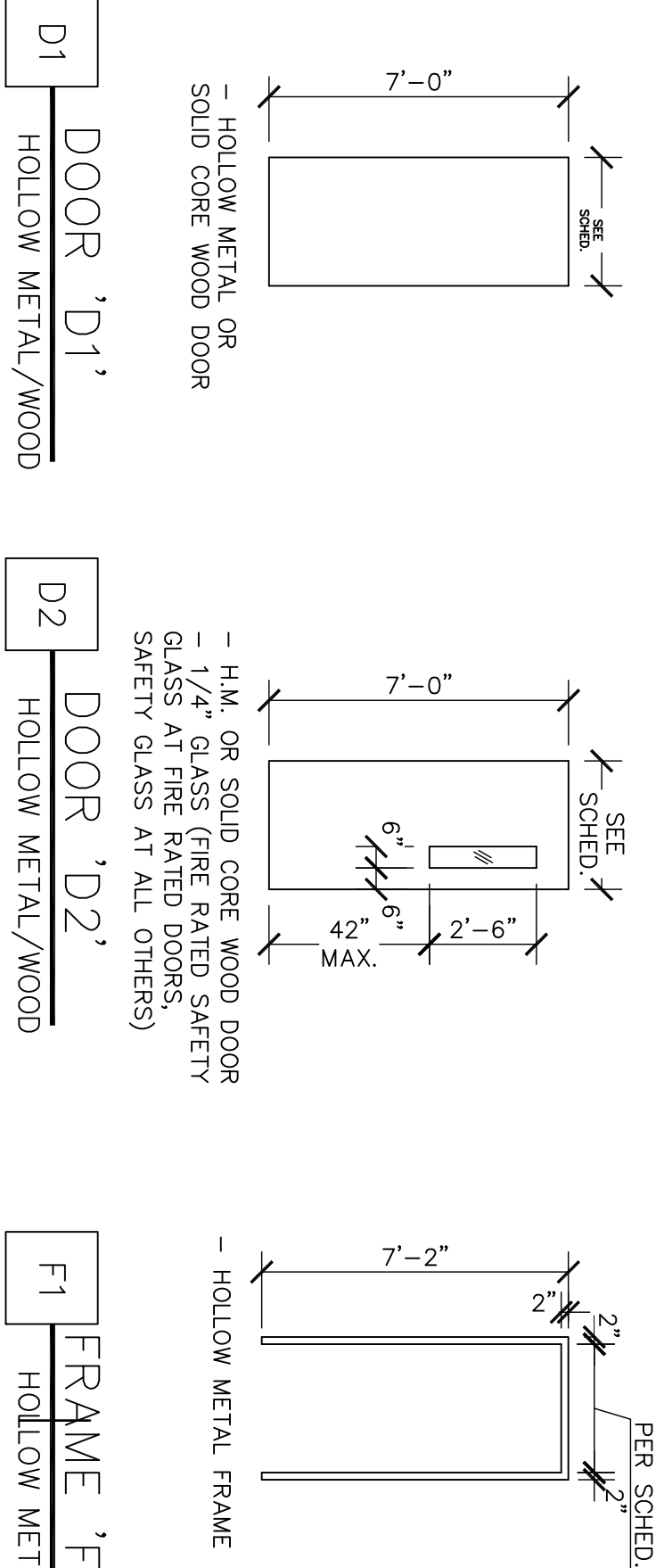


DOOR SCHEDULE						
DOOR NO.	DOOR LOCATION	SIZE	THICKNESS	TYPE	FIRE RATING	DOOR MATERIAL
DB1-001	LAB ENTRY	3'-6" x 1'-6"	7'-0"	D1	-	WOOD
DB1-002	LAB OFFICE	3'-0"	7'-0"	1-3/4"	D2	-
DB1-003	BREAK ROOM	3'-0"	7'-0"	1-3/4"	D2	WOOD
DB1-004	FLAMMABLE STORAGE	3'-0"	7'-0"	1-3/4"	D1	WOOD
DB1-005	REAGENT STORAGE	3'-6" x 1'-6"	7'-0"	1-3/4"	D2	METAL
DB1-006	COMMON DB1-197	3'-6" x 3'-6"	7'-0"	1-3/4"	D2	WOOD
DB1-007	LAB OFFICE AND RECEPTION	3'-0"	7'-0"	1-3/4"	D2	WOOD
DB1-008	SMK 008	3'-0"	7'-0"	1-3/4"	D2	WOOD

DOOR SCHEDULE NOTES

- 1.) ALL VISION PANELS IN RATED DOORS TO HAVE FIRE RATED GLAZING.
- 2.) ALL LOCKSETS TO BE LEVER HANDLE.
- 3.) WOOD DOORS CONST. & FINISH PER SPEC. - SEE SPECIFICATIONS.
- 4.) WOOD DOORS TO BE RESEALED TO MATCH DOOR MANUFACTURERS SPECIFICATIONS.
- 5.) ALL FIRE RATED DOORS / SMOKE PARTITION DOORS TO RCV. SMOKE SEALS.
- 6.) ALL FIRE RATED DOORS TO RECEIVE CLOSER.
- 7.) PROVIDE KICK PLATES AT ALL DOORS W/ CLOSERS.
- 8.)

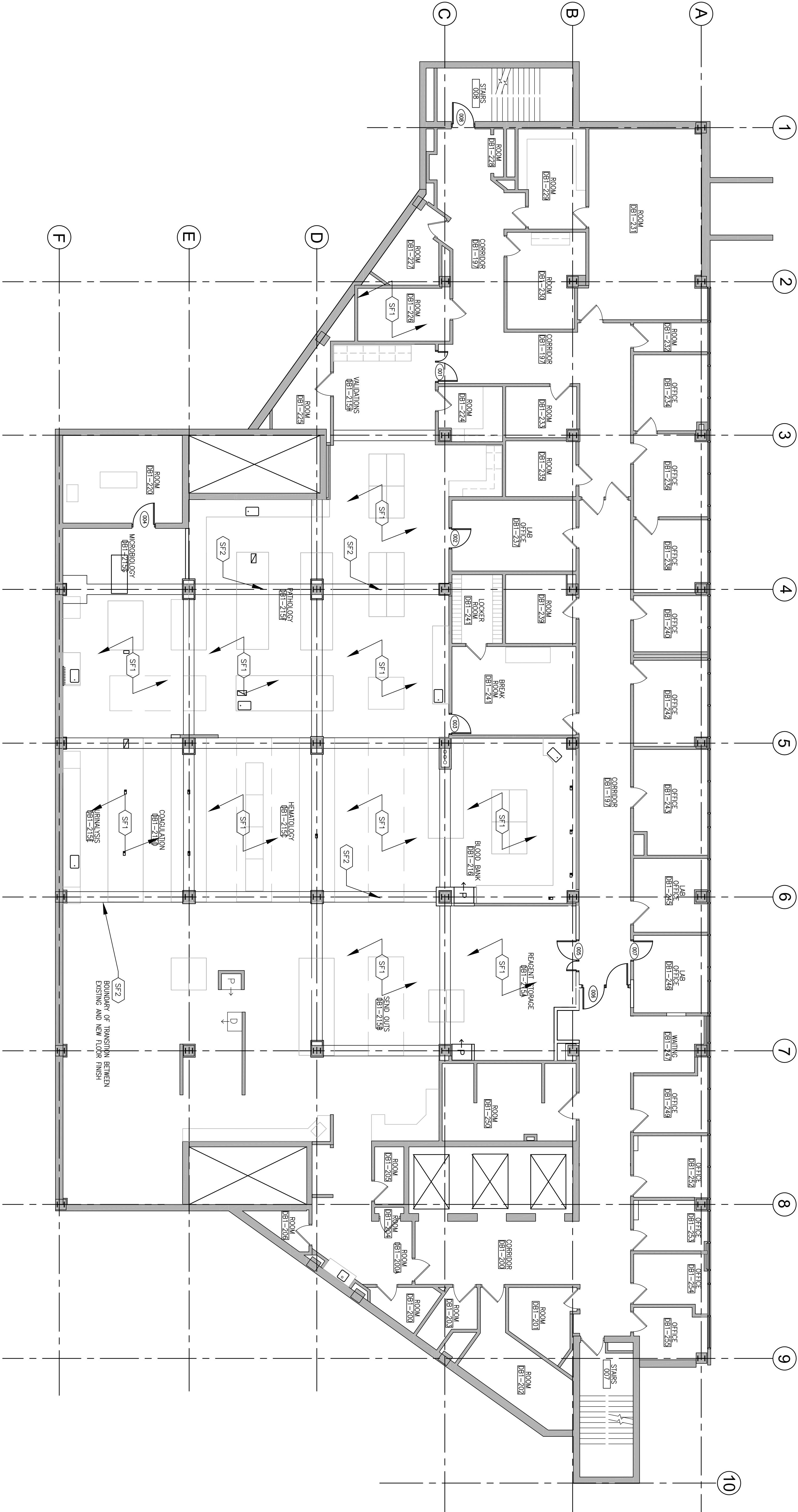
DOOR AND FRAME TYPES



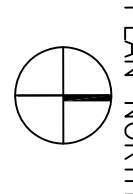
ROOM FINISH SCHEDULE						
ROOM NO.	ROOM NAME	FLOOR	BASE	NORTH WALL	EAST WALL	SOUTH WALL
DB1-216	LAB OFFICE	CFT	WB1	P1	P1	P1
DB1-217	WAITING ROOM	CFT	WB1	P1	P1	P1
DB1-218	REAGENT STORAGE	SFT	WB1	P1	P1	P1
DB1-219	REAGENT STORAGE	SFT	WB1	P1	P1	P1
DB1-220	REAGENT STORAGE	SFT	WB1	P1	P1	P1
DB1-221	REAGENT STORAGE	SFT	WB1	P1	P1	P1
DB1-222	REAGENT STORAGE	SFT	WB1	P1	P1	P1
DB1-223	REAGENT STORAGE	SFT	WB1	P1	P1	P1
DB1-224	REAGENT STORAGE	SFT	WB1	P1	P1	P1
DB1-225	REAGENT STORAGE	SFT	WB1	P1	P1	P1
DB1-226	REAGENT STORAGE	SFT	WB1	P1	P1	P1
DB1-227	REAGENT STORAGE	SFT	WB1	P1	P1	P1
DB1-228	REAGENT STORAGE	SFT	WB1	P1	P1	P1
DB1-229	REAGENT STORAGE	SFT	WB1	P1	P1	P1
DB1-230	REAGENT STORAGE	SFT	WB1	P1	P1	P1
DB1-231	REAGENT STORAGE	SFT	WB1	P1	P1	P1
DB1-232	REAGENT STORAGE	SFT	WB1	P1	P1	P1
DB1-233	REAGENT STORAGE	SFT	WB1	P1	P1	P1
DB1-234	REAGENT STORAGE	SFT	WB1	P1	P1	P1
DB1-235	REAGENT STORAGE	SFT	WB1	P1	P1	P1
DB1-236	REAGENT STORAGE	SFT	WB1	P1	P1	P1
DB1-237	REAGENT STORAGE	SFT	WB1	P1	P1	P1
DB1-238	REAGENT STORAGE	SFT	WB1	P1	P1	P1
DB1-239	REAGENT STORAGE	SFT	WB1	P1	P1	P1
DB1-240	REAGENT STORAGE	SFT	WB1	P1	P1	P1
DB1-241	REAGENT STORAGE	SFT	WB1	P1	P1	P1
DB1-242	REAGENT STORAGE	SFT	WB1	P1	P1	P1
DB1-243	REAGENT STORAGE	SFT	WB1	P1	P1	P1
DB1-244	REAGENT STORAGE	SFT	WB1	P1	P1	P1
DB1-245	REAGENT STORAGE	SFT	WB1	P1	P1	P1
DB1-246	REAGENT STORAGE	SFT	WB1	P1	P1	P1
DB1-247	REAGENT STORAGE	SFT	WB1	P1	P1	P1
DB1-248	REAGENT STORAGE	SFT	WB1	P1	P1	P1
DB1-249	REAGENT STORAGE	SFT	WB1	P1	P1	P1
DB1-250	REAGENT STORAGE	SFT	WB1	P1	P1	P1
DB1-251	REAGENT STORAGE	SFT	WB1	P1	P1	P1
DB1-252	REAGENT STORAGE	SFT	WB1	P1	P1	P1
DB1-253	REAGENT STORAGE	SFT	WB1	P1	P1	P1
DB1-254	REAGENT STORAGE	SFT	WB1	P1	P1	P1
DB1-255	REAGENT STORAGE	SFT	WB1	P1	P1	P1
DB1-256	REAGENT STORAGE	SFT	WB1	P1	P1	P1
DB1-257	REAGENT STORAGE	SFT	WB1	P1	P1	P1
DB1-258	REAGENT STORAGE	SFT	WB1	P1	P1	P1
DB1-259	REAGENT STORAGE	SFT	WB1	P1	P1	P1
DB1-260	REAGENT STORAGE	SFT	WB1	P1	P1	P1
DB1-261	REAGENT STORAGE	SFT	WB1	P1	P1	P1
DB1-262	REAGENT STORAGE	SFT	WB1	P1	P1	P1
DB1-263	REAGENT STORAGE	SFT	WB1	P1	P1	P1
DB1-264	REAGENT STORAGE	SFT	WB1	P1	P1	P1
DB1-265	REAGENT STORAGE	SFT	WB1	P1	P1	P1
DB1-266	REAGENT STORAGE	SFT	WB1	P1	P1	P1
DB1-267	REAGENT STORAGE	SFT	WB1	P1	P1	P1
DB1-268	REAGENT STORAGE	SFT	WB1	P1	P1	P1
DB1-269	REAGENT STORAGE	SFT	WB1	P1	P1	P1
DB1-270	REAGENT STORAGE	SFT	WB1	P1	P1	P1
DB1-271	REAGENT STORAGE	SFT	WB1	P1	P1	P1
DB1-272	REAGENT STORAGE	SFT	WB1	P1	P1	P1
DB1-273	REAGENT STORAGE	SFT	WB1	P1	P1	P1
DB1-274	REAGENT STORAGE	SFT	WB1	P1	P1	P1
DB1-275	REAGENT STORAGE	SFT	WB1	P1	P1	P1
DB1-276	REAGENT STORAGE	SFT	WB1	P1	P1	P1
DB1-277	REAGENT STORAGE	SFT	WB1	P1	P1	P1
DB1-278	REAGENT STORAGE	SFT	WB1	P1	P1	P1
DB1-279	REAGENT STORAGE	SFT	WB1	P1	P1	P1
DB1-280	REAGENT STORAGE	SFT	WB1	P1	P1	P1
DB1-281	REAGENT STORAGE	SFT	WB1	P1	P1	P1
DB1-282	REAGENT STORAGE	SFT	WB1	P1	P1	P1
DB1-283	REAGENT STORAGE	SFT	WB1	P1	P1	P1
DB1-284	REAGENT STORAGE	SFT	WB1	P1	P1	P1
DB1-285	REAGENT STORAGE	SFT	WB1	P1	P1	P1
DB1-286	REAGENT STORAGE	SFT	WB1	P1	P1	P1
DB1-287	REAGENT STORAGE	SFT	WB1	P1	P1	P1
DB1-288	REAGENT STORAGE	SFT	WB1	P1	P1	P1
DB1-289	REAGENT STORAGE	SFT	WB1	P1	P1	P1
DB1-290	REAGENT STORAGE	SFT	WB1	P1	P1	P1
DB1-291	REAGENT STORAGE	SFT	WB1	P1	P1	P1
DB1-292	REAGENT STORAGE	SFT	WB1	P1	P1	P1
DB1-293	REAGENT STORAGE	SFT	WB1	P1	P1	P1
DB1-294	REAGENT STORAGE	SFT	WB1	P1	P1	P1
DB1-295	REAGENT STORAGE	SFT	WB1	P1	P1	P1
DB1-296	REAGENT STORAGE	SFT	WB1	P1	P1	P1
DB1-297	REAGENT STORAGE	SFT	WB1	P1	P1	P1
DB1-298	REAGENT STORAGE	SFT	WB1	P1	P1	P1
DB1-299	REAGENT STORAGE	SFT	WB1	P1	P1	P1
DB1-300	REAGENT STORAGE	SFT	WB1	P1	P1	P1

ROOM FINISH NOTES

- 1.) ACCENT WALL FINISHES PER FLOOR FINISH PLAN
- 2.) ALL FINISHES TO BE CLASS "A" (APPLIES TO ENTIRE SCHEDULE ABOVE)



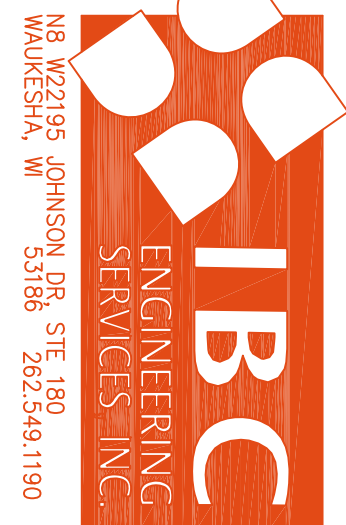
F1 DB1 FLOOR "D" WING - FINISH PLAN



CONSULTANTS:



ARCHITECT/ENGINEERS:



FINISH PLAN AND SCHEDULES

Project Title
William S. Middleton VAH
Expanded Clinical Lab

Project Number
130601
Building Number
1

Office of
Construction
and Facilities
Management

Location
Madison, WI

Dated
Feb 10, 2014

Checked
SM

Drawn
AS

Drawing Number
A600

