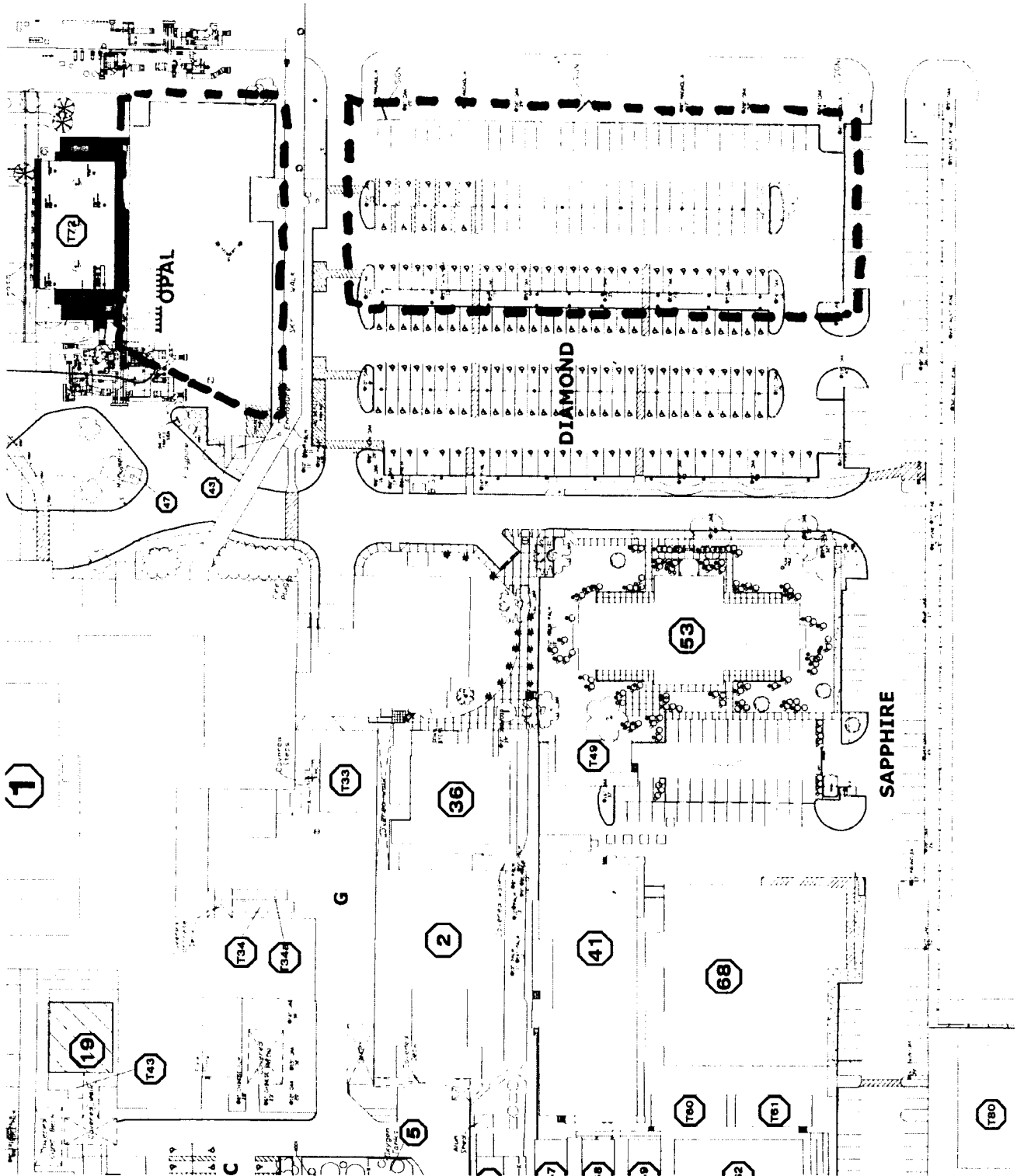


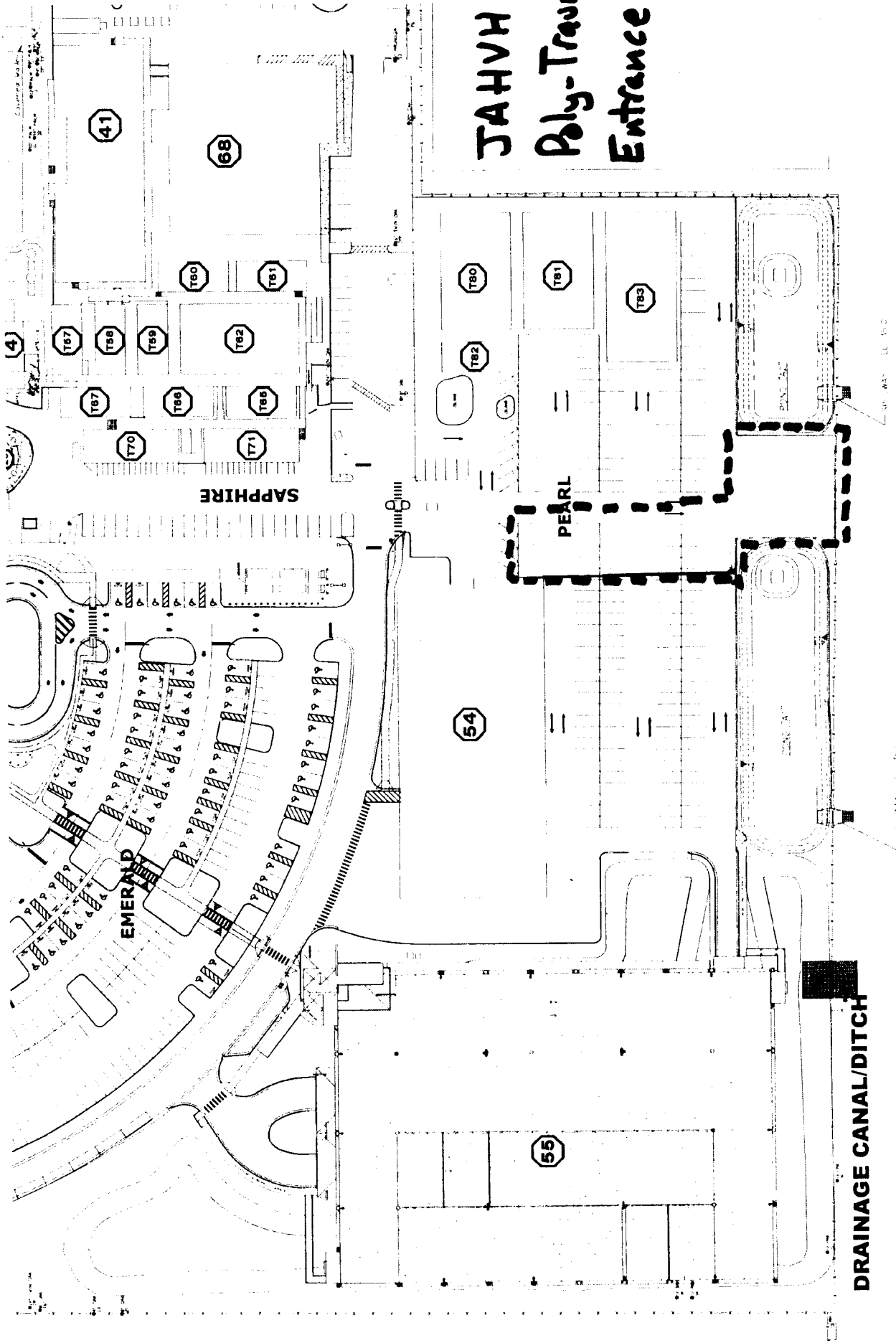
JAHVH Main Entrance

BRIDGE PLAINS BOULEVARD

S I M P L E

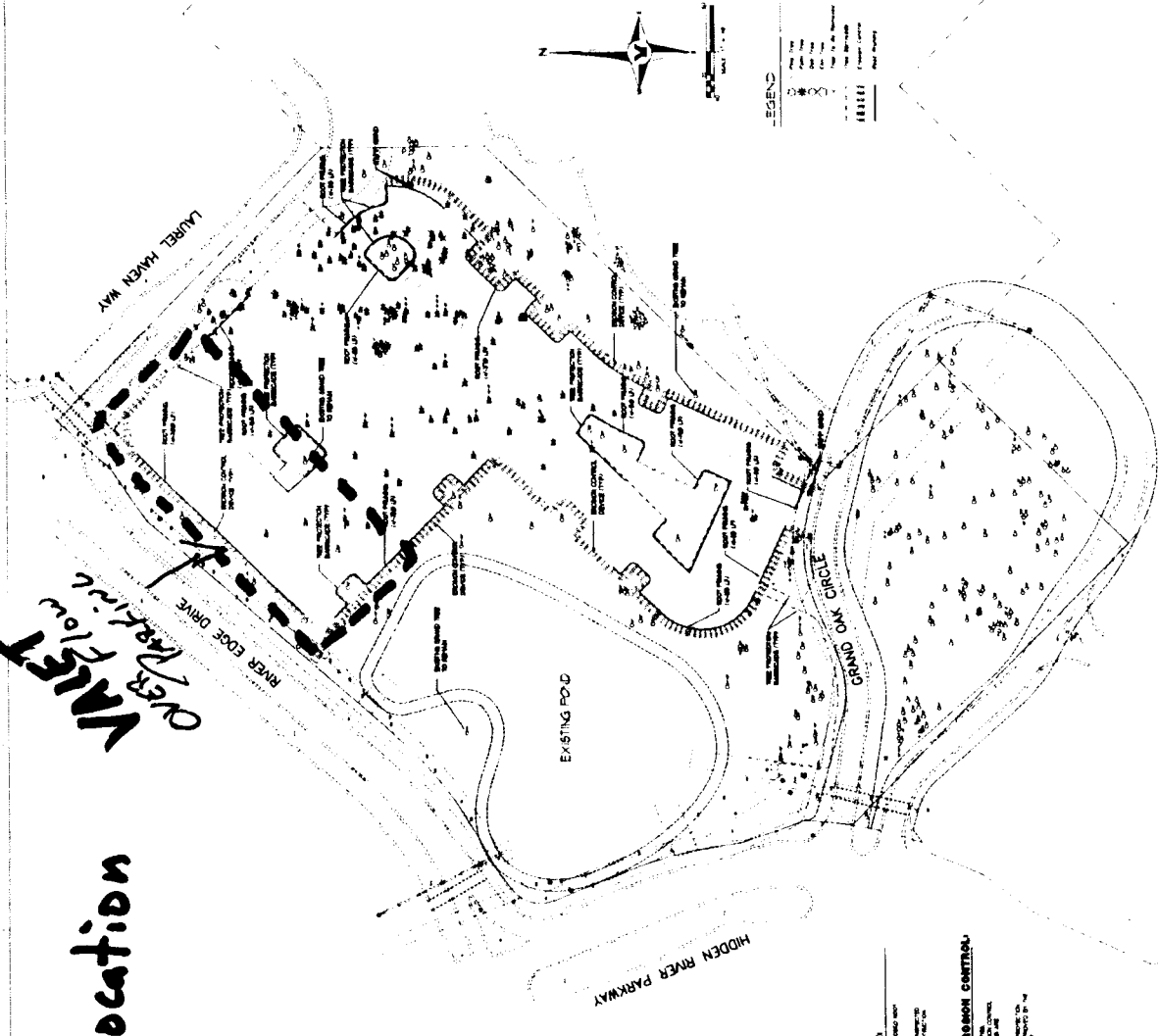
S O U T H





* PCA Potential Future location Violet Parking

Violet
Flow
Parking



CITY OF TAMPA TREE CREDIT AND DEBIT TABLES (REMOTE PARKING SITE ONLY)

TREE CREDIT TABLE			
Tree Species	Caliber (inches)	Height (feet)	Value
Live Oak	6-8	10-15	\$1,000
Live Oak	8-10	15-20	\$2,000
Live Oak	10-12	20-25	\$3,000
Live Oak	12-14	25-30	\$4,000
Live Oak	14-16	30-35	\$5,000
Live Oak	16-18	35-40	\$6,000
Live Oak	18-20	40-45	\$7,000
Live Oak	20-22	45-50	\$8,000
Live Oak	22-24	50-55	\$9,000
Live Oak	24-26	55-60	\$10,000
Live Oak	26-28	60-65	\$11,000
Live Oak	28-30	65-70	\$12,000
Live Oak	30-32	70-75	\$13,000
Live Oak	32-34	75-80	\$14,000
Live Oak	34-36	80-85	\$15,000
Live Oak	36-38	85-90	\$16,000
Live Oak	38-40	90-95	\$17,000
Live Oak	40-42	95-100	\$18,000
Live Oak	42-44	100-105	\$19,000
Live Oak	44-46	105-110	\$20,000
Live Oak	46-48	110-115	\$21,000
Live Oak	48-50	115-120	\$22,000
Live Oak	50-52	120-125	\$23,000
Live Oak	52-54	125-130	\$24,000
Live Oak	54-56	130-135	\$25,000
Live Oak	56-58	135-140	\$26,000
Live Oak	58-60	140-145	\$27,000
Live Oak	60-62	145-150	\$28,000
Live Oak	62-64	150-155	\$29,000
Live Oak	64-66	155-160	\$30,000
Live Oak	66-68	160-165	\$31,000
Live Oak	68-70	165-170	\$32,000
Live Oak	70-72	170-175	\$33,000
Live Oak	72-74	175-180	\$34,000
Live Oak	74-76	180-185	\$35,000
Live Oak	76-78	185-190	\$36,000
Live Oak	78-80	190-195	\$37,000
Live Oak	80-82	195-200	\$38,000
Live Oak	82-84	200-205	\$39,000
Live Oak	84-86	205-210	\$40,000
Live Oak	86-88	210-215	\$41,000
Live Oak	88-90	215-220	\$42,000
Live Oak	90-92	220-225	\$43,000
Live Oak	92-94	225-230	\$44,000
Live Oak	94-96	230-235	\$45,000
Live Oak	96-98	235-240	\$46,000
Live Oak	98-100	240-245	\$47,000
Live Oak	100-102	245-250	\$48,000
Live Oak	102-104	250-255	\$49,000
Live Oak	104-106	255-260	\$50,000
Live Oak	106-108	260-265	\$51,000
Live Oak	108-110	265-270	\$52,000
Live Oak	110-112	270-275	\$53,000
Live Oak	112-114	275-280	\$54,000
Live Oak	114-116	280-285	\$55,000
Live Oak	116-118	285-290	\$56,000
Live Oak	118-120	290-295	\$57,000
Live Oak	120-122	295-300	\$58,000
Live Oak	122-124	300-305	\$59,000
Live Oak	124-126	305-310	\$60,000
Live Oak	126-128	310-315	\$61,000
Live Oak	128-130	315-320	\$62,000
Live Oak	130-132	320-325	\$63,000
Live Oak	132-134	325-330	\$64,000
Live Oak	134-136	330-335	\$65,000
Live Oak	136-138	335-340	\$66,000
Live Oak	138-140	340-345	\$67,000
Live Oak	140-142	345-350	\$68,000
Live Oak	142-144	350-355	\$69,000
Live Oak	144-146	355-360	\$70,000
Live Oak	146-148	360-365	\$71,000
Live Oak	148-150	365-370	\$72,000
Live Oak	150-152	370-375	\$73,000
Live Oak	152-154	375-380	\$74,000
Live Oak	154-156	380-385	\$75,000
Live Oak	156-158	385-390	\$76,000
Live Oak	158-160	390-395	\$77,000
Live Oak	160-162	395-400	\$78,000
Live Oak	162-164	400-405	\$79,000
Live Oak	164-166	405-410	\$80,000
Live Oak	166-168	410-415	\$81,000
Live Oak	168-170	415-420	\$82,000
Live Oak	170-172	420-425	\$83,000
Live Oak	172-174	425-430	\$84,000
Live Oak	174-176	430-435	\$85,000
Live Oak	176-178	435-440	\$86,000
Live Oak	178-180	440-445	\$87,000
Live Oak	180-182	445-450	\$88,000
Live Oak	182-184	450-455	\$89,000
Live Oak	184-186	455-460	\$90,000
Live Oak	186-188	460-465	\$91,000
Live Oak	188-190	465-470	\$92,000
Live Oak	190-192	470-475	\$93,000
Live Oak	192-194	475-480	\$94,000
Live Oak	194-196	480-485	\$95,000
Live Oak	196-198	485-490	\$96,000
Live Oak	198-200	490-495	\$97,000
Live Oak	200-202	495-500	\$98,000
Live Oak	202-204	500-505	\$99,000
Live Oak	204-206	505-510	\$100,000

ROOT PRUNING NOTE

Root pruning shall be performed on all trees to be planted within the project area. Root pruning shall be performed on all trees to be planted within the project area. Root pruning shall be performed on all trees to be planted within the project area.

TREE PROTECTION/REMOVAL CONTINGENCY

Tree protection/Removal contingency shall be provided for all trees to be planted within the project area. Tree protection/Removal contingency shall be provided for all trees to be planted within the project area. Tree protection/Removal contingency shall be provided for all trees to be planted within the project area.

CONSULTANTS:

CONSULTANTS: [Logos and names of consultants]

ARCHITECTS/ENGINEERS:

ARCHITECTS/ENGINEERS: [Logos and names of architects/engineers]

DESIGN BUILD:

DESIGN BUILD: [Logos and names of design/build firms]

Office of Construction and Facilities Management

Office of Construction and Facilities Management: [Logos and names of office staff]

CD102

* PCA Potential Future location Valet Parking

CITY OF TAMPA TREE CREDIT AND DEBT TABLES
BUILDING SITE AND MOBILE PARKING SITES COMBINED

TREE CREDIT TABLE	
DATE	REPLACEMENT VALUE
1-1-1980	100
1-1-1985	110
1-1-1990	120
1-1-1995	130
1-1-2000	140
1-1-2005	150
1-1-2010	160
1-1-2015	170
1-1-2020	180
1-1-2025	190
1-1-2030	200
1-1-2035	210
1-1-2040	220
1-1-2045	230
1-1-2050	240
1-1-2055	250
1-1-2060	260
1-1-2065	270
1-1-2070	280
1-1-2075	290
1-1-2080	300
1-1-2085	310
1-1-2090	320
1-1-2095	330
1-1-2100	340
1-1-2105	350
1-1-2110	360
1-1-2115	370
1-1-2120	380
1-1-2125	390
1-1-2130	400
1-1-2135	410
1-1-2140	420
1-1-2145	430
1-1-2150	440
1-1-2155	450
1-1-2160	460
1-1-2165	470
1-1-2170	480
1-1-2175	490
1-1-2180	500
1-1-2185	510
1-1-2190	520
1-1-2195	530
1-1-2200	540
1-1-2205	550
1-1-2210	560
1-1-2215	570
1-1-2220	580
1-1-2225	590
1-1-2230	600
1-1-2235	610
1-1-2240	620
1-1-2245	630
1-1-2250	640
1-1-2255	650
1-1-2260	660
1-1-2265	670
1-1-2270	680
1-1-2275	690
1-1-2280	700
1-1-2285	710
1-1-2290	720
1-1-2295	730
1-1-2300	740
1-1-2305	750
1-1-2310	760
1-1-2315	770
1-1-2320	780
1-1-2325	790
1-1-2330	800
1-1-2335	810
1-1-2340	820
1-1-2345	830
1-1-2350	840
1-1-2355	850
1-1-2360	860
1-1-2365	870
1-1-2370	880
1-1-2375	890
1-1-2380	900
1-1-2385	910
1-1-2390	920
1-1-2395	930
1-1-2400	940
1-1-2405	950
1-1-2410	960
1-1-2415	970
1-1-2420	980
1-1-2425	990
1-1-2430	1000
1-1-2435	1010
1-1-2440	1020
1-1-2445	1030
1-1-2450	1040
1-1-2455	1050
1-1-2460	1060
1-1-2465	1070
1-1-2470	1080
1-1-2475	1090
1-1-2480	1100
1-1-2485	1110
1-1-2490	1120
1-1-2495	1130
1-1-2500	1140
1-1-2505	1150
1-1-2510	1160
1-1-2515	1170
1-1-2520	1180
1-1-2525	1190
1-1-2530	1200
1-1-2535	1210
1-1-2540	1220
1-1-2545	1230
1-1-2550	1240
1-1-2555	1250
1-1-2560	1260
1-1-2565	1270
1-1-2570	1280
1-1-2575	1290
1-1-2580	1300
1-1-2585	1310
1-1-2590	1320
1-1-2595	1330
1-1-2600	1340
1-1-2605	1350
1-1-2610	1360
1-1-2615	1370
1-1-2620	1380
1-1-2625	1390
1-1-2630	1400
1-1-2635	1410
1-1-2640	1420
1-1-2645	1430
1-1-2650	1440
1-1-2655	1450
1-1-2660	1460
1-1-2665	1470
1-1-2670	1480
1-1-2675	1490
1-1-2680	1500
1-1-2685	1510
1-1-2690	1520
1-1-2695	1530
1-1-2700	1540
1-1-2705	1550
1-1-2710	1560
1-1-2715	1570
1-1-2720	1580
1-1-2725	1590
1-1-2730	1600
1-1-2735	1610
1-1-2740	1620
1-1-2745	1630
1-1-2750	1640
1-1-2755	1650
1-1-2760	1660
1-1-2765	1670
1-1-2770	1680
1-1-2775	1690
1-1-2780	1700
1-1-2785	1710
1-1-2790	1720
1-1-2795	1730
1-1-2800	1740
1-1-2805	1750
1-1-2810	1760
1-1-2815	1770
1-1-2820	1780
1-1-2825	1790
1-1-2830	1800
1-1-2835	1810
1-1-2840	1820
1-1-2845	1830
1-1-2850	1840
1-1-2855	1850
1-1-2860	1860
1-1-2865	1870
1-1-2870	1880
1-1-2875	1890
1-1-2880	1900
1-1-2885	1910
1-1-2890	1920
1-1-2895	1930
1-1-2900	1940
1-1-2905	1950
1-1-2910	1960
1-1-2915	1970
1-1-2920	1980
1-1-2925	1990
1-1-2930	2000
1-1-2935	2010
1-1-2940	2020
1-1-2945	2030
1-1-2950	2040
1-1-2955	2050
1-1-2960	2060
1-1-2965	2070
1-1-2970	2080
1-1-2975	2090
1-1-2980	2100
1-1-2985	2110
1-1-2990	2120
1-1-2995	2130
1-1-3000	2140
1-1-3005	2150
1-1-3010	2160
1-1-3015	2170
1-1-3020	2180
1-1-3025	2190
1-1-3030	2200
1-1-3035	2210
1-1-3040	2220
1-1-3045	2230
1-1-3050	2240
1-1-3055	2250
1-1-3060	2260
1-1-3065	2270
1-1-3070	2280
1-1-3075	2290
1-1-3080	2300
1-1-3085	2310
1-1-3090	2320
1-1-3095	2330
1-1-3100	2340
1-1-3105	2350
1-1-3110	2360
1-1-3115	2370
1-1-3120	2380
1-1-3125	2390
1-1-3130	2400
1-1-3135	2410
1-1-3140	2420
1-1-3145	2430
1-1-3150	2440
1-1-3155	2450
1-1-3160	2460
1-1-3165	2470
1-1-3170	2480
1-1-3175	2490
1-1-3180	2500
1-1-3185	2510
1-1-3190	2520
1-1-3195	2530
1-1-3200	2540
1-1-3205	2550
1-1-3210	2560
1-1-3215	2570
1-1-3220	2580
1-1-3225	2590
1-1-3230	2600
1-1-3235	2610
1-1-3240	2620
1-1-3245	2630
1-1-3250	2640
1-1-3255	2650
1-1-3260	2660
1-1-3265	2670
1-1-3270	2680
1-1-3275	2690
1-1-3280	2700
1-1-3285	2710
1-1-3290	2720
1-1-3295	2730
1-1-3300	2740
1-1-3305	2750
1-1-3310	2760
1-1-3315	2770
1-1-3320	2780
1-1-3325	2790
1-1-3330	2800
1-1-3335	2810
1-1-3340	2820
1-1-3345	2830
1-1-3350	2840
1-1-3355	2850
1-1-3360	2860
1-1-3365	2870
1-1-3370	2880
1-1-3375	2890
1-1-3380	2900
1-1-3385	2910
1-1-3390	2920
1-1-3395	2930
1-1-3400	2940
1-1-3405	2950
1-1-3410	2960
1-1-3415	2970
1-1-3420	2980
1-1-3425	2990
1-1-3430	3000
1-1-3435	3010
1-1-3440	3020
1-1-3445	3030
1-1-3450	3040
1-1-3455	3050
1-1-3460	3060
1-1-3465	3070
1-1-3470	3080
1-1-3475	3090
1-1-3480	3100
1-1-3485	3110
1-1-3490	3120
1-1-3495	3130
1-1-3500	3140
1-1-3505	3150
1-1-3510	3160
1-1-3515	3170
1-1-3520	3180
1-1-3525	3190
1-1-3530	3200
1-1-3535	3210
1-1-3540	3220
1-1-3545	3230
1-1-3550	3240
1-1-3555	3250
1-1-3560	3260
1-1-3565	3270
1-1-3570	3280
1-1-3575	3290
1-1-3580	3300
1-1-3585	3310
1-1-3590	3320
1-1-3595	3330
1-1-3600	3340
1-1-3605	3350
1-1-3610	3360
1-1-3615	3370
1-1-3620	3380
1-1-3625	3390
1-1-3630	3400
1-1-3635	3410
1-1-3640	3420
1-1-3645	3430
1-1-3650	3440
1-1-3655	3450
1-1-3660	3460
1-1-3665	3470
1-1-3670	3480
1-1-3675	3490
1-1-3680	3500
1-1-3685	3510
1-1-3690	3520
1-1-3695	3530
1-1-3700	3540
1-1-3705	3550
1-1-3710	3560
1-1-3715	3570
1-1-3720	3580
1-1-3725	3590
1-1-3730	3600
1-1-3735	3610
1-1-3740	3620
1-1-3745	3630
1-1-3750	3640
1-1-3755	3650
1-1-3760	3660
1-1-3765	3670
1-1-3770	3680
1-1-3775	3690
1-1-3780	3700
1-1-3785	3710
1-1-3790	3720
1-1-3795	3730
1-1-3800	3740
1-1-3805	3750
1-1-3810	3760
1-1-3815	3770
1-1-3820	3780
1-1-3825	3790
1-1-3830	3800
1-1-3835	3810
1-1-3840	3820
1-1-3845	3830
1-1-3850	3840
1-1-3855	3850
1-1-3860	3860
1-1-3865	3870
1-1-3870	3880
1-1-3875	3890
1-1-3880	3900
1-1-3885	3910
1-1-3890	3920
1-1-3895	3930
1-1-3900	3940
1-1-3905	3950
1-1-3910	3960
1-1-3915	3970
1-1-3920	3980
1-1-3925	3990
1-1-3930	4000
1-1-3935	4010
1-1-3940	4020
1-1-3945	4030
1-1-3950	4040
1-1-3955	4050
1-1-3960	4060
1-1-3965	4070
1-1-3970	4080
1-1-3975	4090
1-1-3980	4100
1-1-3985	4110
1-1-3990	4120
1-1-3995	4130
1-1-4000	4140
1-1-4005	4150
1-1-4010	4160
1-1-4015	4170
1-1-4020	4180
1-1-4025	4190
1-1-4030	4200
1-1-4035	4210
1-1-4040	4220
1-1-4045	4230
1-1-4050	4240
1-1-4055	4250
1-1-4060	4260
1-1-4065	4270
1-1-4070	4280
1-1-4075	4290
1-1-4080	4300
1-1-4085	4310
1-1-4090	4320
1-1-4095	4330
1-1-4100	4340
1-1-4105	4350
1-1-4110	4360
1-1-4115	4370
1-1-4120	4380
1-1-4125	4390
1-1-4130	4400
1-1-4135	4410
1-1-4140	4420
1-1-4145	4430
1-1-4150	4440
1-1-4155	4450
1-1-4160	4460
1-1-4165	4470
1-1-4170	