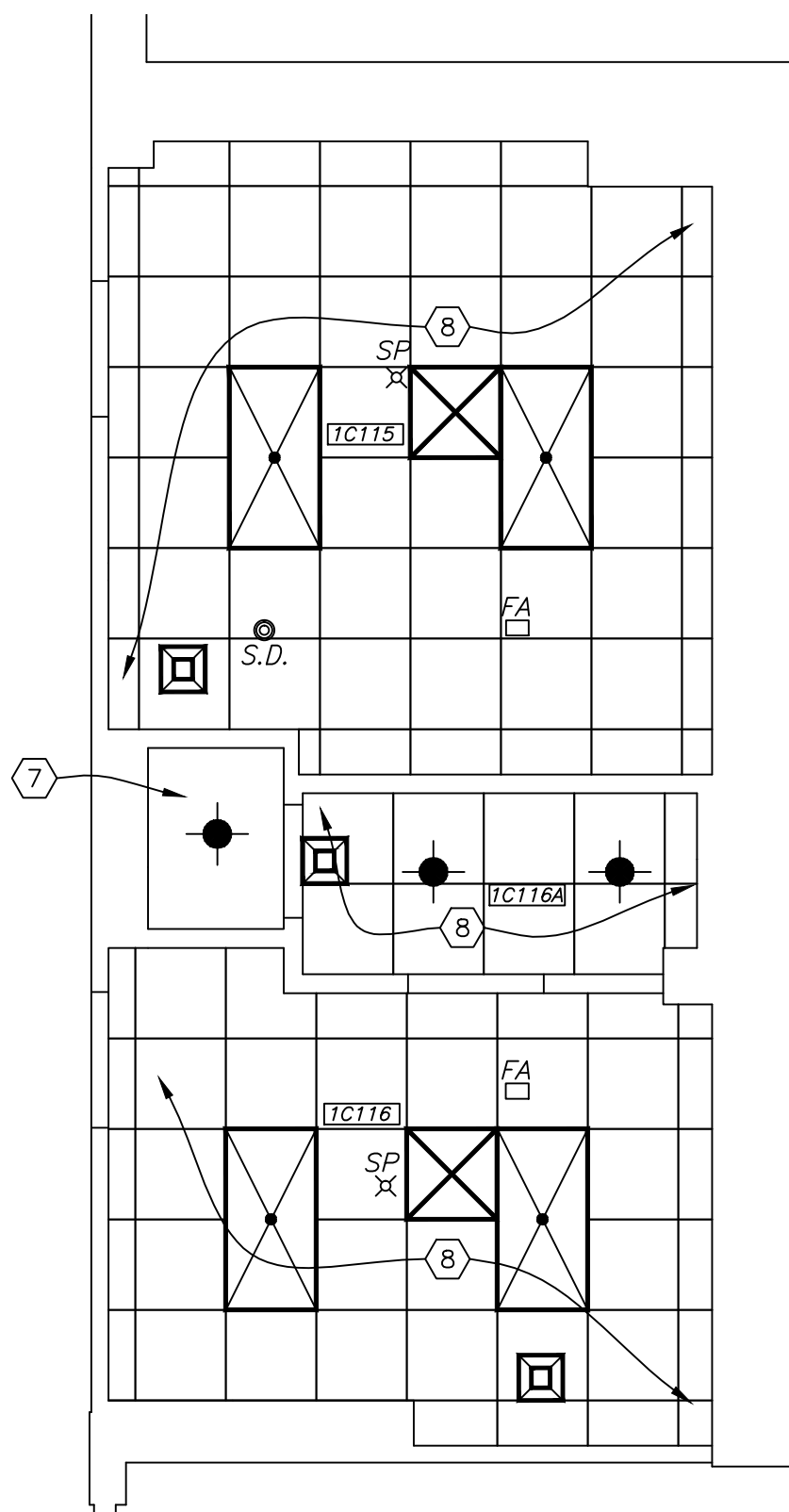


**FIRST FLOOR  
NEW WORK PLAN**

SCALE: 1/4" = 1'-0"

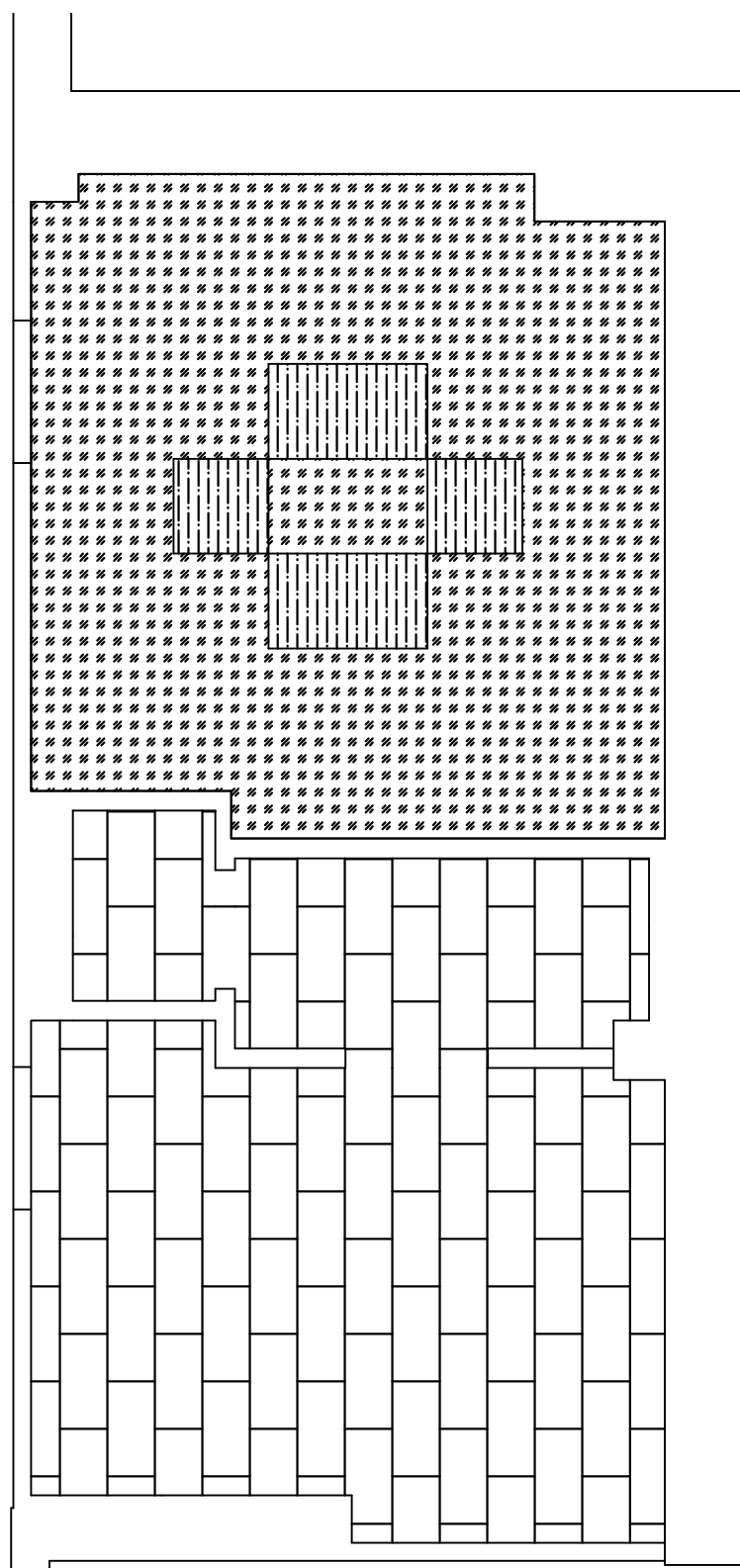
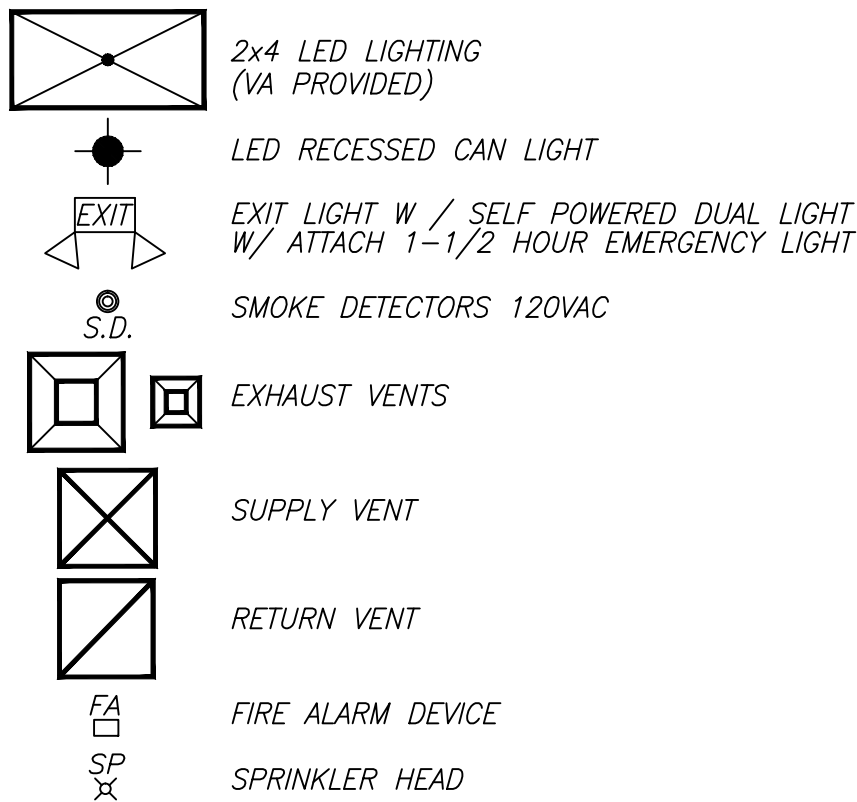


**FIRST FLOOR  
CEILING PLAN**

SCALE: 1/4" = 1'-0"



## CEILING PLAN LEGEND



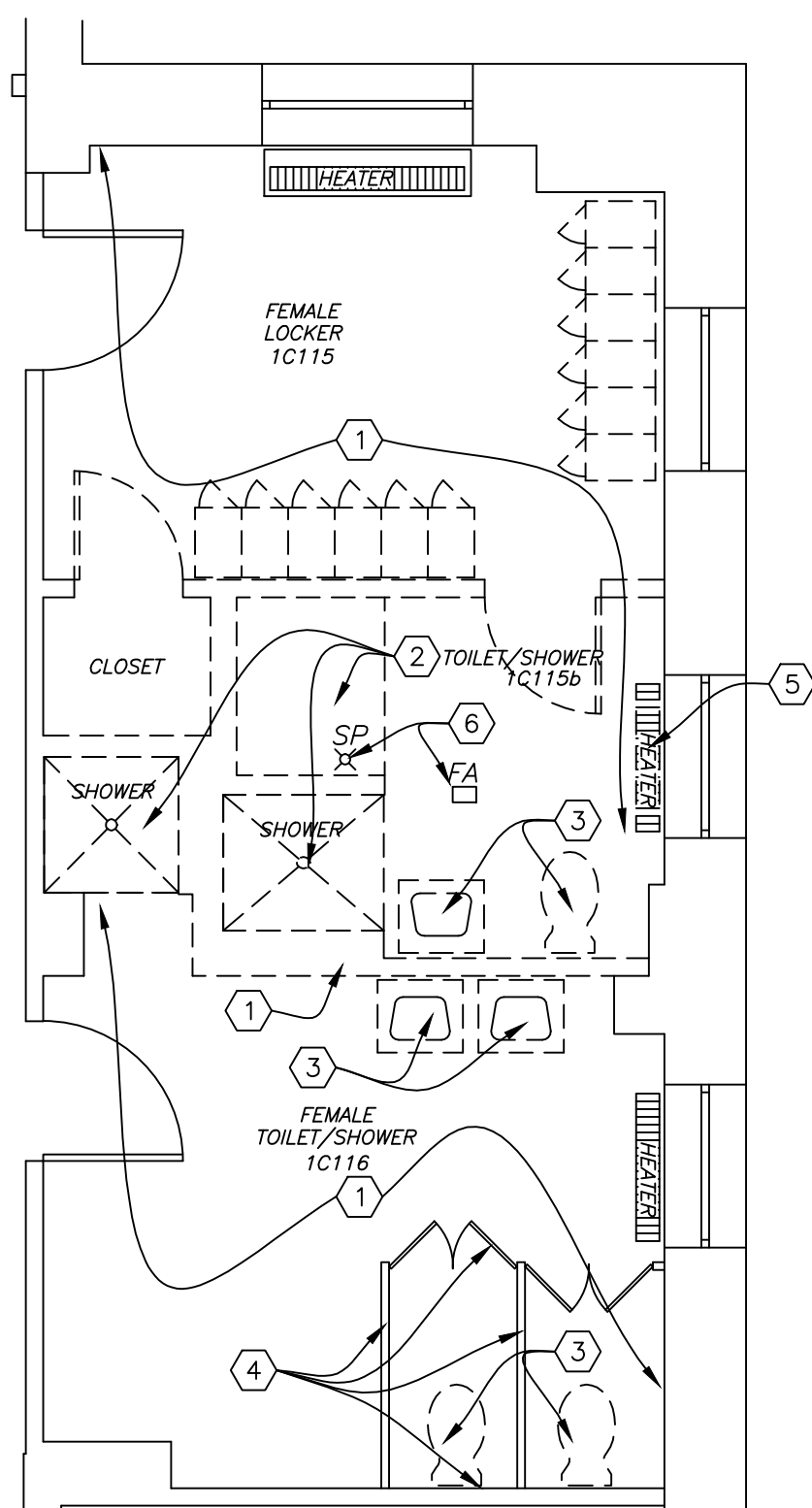
**FIRST FLOOR  
FLOOR PATTERN PLAN**

SCALE: 1/4" = 1'-0"

NOTE: FLOOR TILE LAYOUT REPRESENTS "EXAMPLE ONLY". FINAL FLOOR PATTERN SHALL BE FIELD DETERMINED BY VA INTERIOR DESIGN REPRESENTATIVE.

## DEMOLITION NOTES

- ENTIRE ROOM TO RECEIVE NEW FINISHES. REMOVE EXISTING VCT FLOORING. REMOVE COVE BASE WHERE IT EXISTS. REMOVE EXISTING LIGHTING, SUSPENDED CEILING TILE & GRID. PATCH FLOORS & WALLS AS REQUIRED FOR NEW FINISH. REMOVE WALL HUNG ITEMS AND STORE APPROPRIATELY AS DIRECTED BY COR FOR RE-INSTALLATION. APPLY ARDEX SELF LEVELING CONCRETE UNDERLAMENT AS REQUIRED.
- REMOVE EXISTING ELEVATED FLOOR, DOORS, LOCKERS, SHOWER STALLS, MASONRY AND/OR STUD WALLS. PATCH FLOORS & WALLS TO REMAIN AS REQUIRED FOR NEW FINISH.
- REMOVE ALL PLUMBING FIXTURES, & GRID. PATCH FLOORS & WALLS AS REQUIRED FOR NEW FINISH. PLUMBING CONTRACTOR TO REMOVE EXIST. PLUMBING FIXTURES AND CAP LINES AS REQUIRED. REFER TO PLUMBING DRAWING FOR DETAILS.
- CAREFULLY REMOVE EXISTING MARBLE TOILET PARTITIONS AND DOORS. SAFELY SECURE FOR REINSTALLATION. FULLY CLEAN PARTITIONS AND BRACKETS PRIOR TO SETTING BACK INTO POSITION. INCLUDES PANELS INSTALLED ON BACK & SIDE WALLS
- REMOVE HEATING UNIT AND ASSOCIATED PLUMBING CONNECTIONS. PATCH FLOORS & WALLS AS REQUIRED FOR NEW FINISH. PLUMBING CONTRACTOR TO REMOVE EXIST. PLUMBING AND CAP LINES AS REQUIRED.
- REMOVE SPRINKLER HEAD (SP), RELOCATE FIRE ALARM (FA) DEVICE TO LOCATION NOTED ON PROPOSED CEILING PLAN.



**FIRST FLOOR  
DEMOLITION PLAN**

SCALE: 1/4" = 1'-0"



## CONSTRUCTION NOTES

- NEW DRYWALL PARTITION - 5/8" MOISTURE RESISTANT DRYWALL ON BOTH SIDES OF 4" 20 GAUGE METAL STUDS @ 16" O.C. EXTEND STUDS & DRYWALL TO UNDERSIDE OF DECK ABOVE. INSULATE WALLS FOR SOUND. INSTALL BLOCKING TO SUPPORT WALL HUNG CABINETS. REFER TO ELEVATIONS AND ROOM FINISH SCHEDULE FOR TILE AND/OR PAINT FINISH.
- NEW DRYWALL CHASE PARTITION - 5/8" MOISTURE RESISTANT DRYWALL ON ONE SIDE OF 4" 20 GAUGE METAL STUDS @ 16" O.C. TO 4" (MIN.) ABOVE HIGHEST ADJACENT FINISHED CEILING. INSTALL BLOCKING TO SUPPORT WALL HUNG FIXTURES. REFER TO ELEVATIONS AND ROOM FINISH SCHEDULE FOR TILE AND/OR PAINT FINISH.
- INSTALL NEW 3'-0"x 7'-0" HOLLOW METAL DOORS & 2" FRAMES. DOOR FRAMING STUDS SHALL BE DOUBLED AT EACH JAMB. INSTALL FLOOR ANCHOR CLIPS AS REQ. HARDWARE TO INCLUDE LEVER HANDLES, BUTTS, SILENCERS, CLOSERS & DOOR STOPS.
- INSTALL NEW 2 TIER 12"x18"x76" METAL LOCKERS (16 GAUGE) WITH LEGS. EACH LOCKER SHALL INCLUDE NUMBER PLATE, 3 WALL HOOKS, DOUBLE CEILING HOOK, RECESSED HASP, SLOPING HOOD, FRONT BASE COVERS AND END BASE COVERS WHERE SIDES ARE EXPOSED, WALL ANCHOR BRACKETS SHALL BE INCLUDED TO SECURE TO WALL.
- DRILL 2"Ø HOLES & INSERT GROMMET RINGS AS SHOWN. 2 TOTAL.
- LOWER SECTION WALL TO RECEIVE CERAMIC TILE AND UPPER SECTION SHALL BE PAINTED. REFER TO ELEVATION D, SHEET A2 FOR TILE HEIGHT.
- NEW DRYWALL CEILING. SEE FINISH SCHEDULE, MECHANICAL PLAN SHEET MP1 & LIGHTING PLAN SHEET E1.
- NEW 2x2 CEILING TILE, GRID, HVAC & LIGHTING. SEE FINISH SCHEDULE, MECHANICAL PLAN & LIGHTING PLAN SHEET MP1.
- RE-INSTALL EXISTING TOILET PARTITIONS AND DOORS. FULLY CLEAN PARTITIONS, REPLACE BRACKETS WITH NEW PRIOR TO SETTING BACK INTO POSITION.
- INSTALL NEW ROBE HOOK, MOUNT @ 64" A.F.F.
- INSTALL NEW 18" WIDE TOWEL BAR, MOUNT @ 62" A.F.F.

## ROOM FINISH SCHEDULE

RM.NO.	ROOM NAME	FLOOR FINISH	BASE	WALLS	CEILING	NOTES
1C115	LOUNGE/LOCKER	RES-1,2	RB	P1,2	ACT	SEE NOTES 1, 2, 4, 5, 6, 7, 9
1C116A	WOMENS TOILET	PT	PT	PT/P4	ACT	SEE NOTES 1, 3, 4, 8, 9
1C116	SHOWER	PT	PT	PT/P4	DW	SEE NOTES 1, 3, 4, 9

### MATERIAL FINISH LEGEND

ACOUSTIC CEILING TILE (ACT)	RUBBER BASE (RB)	RESILIENT FLOORING (RES)
PORCELAIN TILE (PT)	PAINT (P)	DRYWALL TYPE X AND PAINT (DW)

### FINISH NOTES:

- ACOUSTIC CEILING TILE (ACT) SHALL BE 2x2 LAY IN TYPE, WASHABLE, MOLD, BACTERIA & MILDEW RESISTANT. INSTALL NEW GRID.
- NEW PARTITION WALLS IN THIS ROOM SHALL BE PAINTED AND RECEIVE SAME FINISHES TO MATCH AS REQUIRED. REFER TO MATERIAL & COLOR LEGEND.
- TOILET ROOMS SHALL RECEIVE COMBINATION PORCELAIN TILES FROM FLOOR TO 5'-0" AND PAINTED WALLS ABOVE. SEE ELEVATION DETAILS & MATERIAL & COLOR LEGEND. SHOWERS SHALL RECEIVE PORCELAIN TILES FROM FLOOR TO CEILING. SEE ELEVATIONS & DETAIL.
- PAINT (P) 1 COAT SHERWIN WILLIAMS MULTI-PURPOSE LATEX PRIMER, 2 COATS SHERWIN WILLIAMS SEMI GLOSS LATEX FINISH. COLOR REFER TO MATERIAL & COLOR LEGEND.
- RUBBER BASE (RB) SHALL BE 5-1/4" HIGH WITH CONTOUR, COLOR - MANNINGTON 918 FLAX.
- RESILIENT FLOORING (RES) TWO COLOR PATTERN T.B.D. REFER TO FLOOR PATTERN LAYOUT AND MATERIAL & COLOR LEGEND SHEET A2.
- ONE ACCENT WALL SHALL BE PAINTED THIS ROOM. REFER TO MATERIAL & COLOR LEGEND SHEET A2.
- STAINLESS STEEL WITH BRUSH FINISH PARTITIONS SHALL BE FLOOR SUPPORTED AND HEADRAILS BRACED. HARDWARE SHALL INCLUDE HINGES, COAT RACK, PAPER HOLDER, DOOR PULL, CONCEALED LATCH & DOOR STOP.
- EVERY DOOR & FRAME SHALL BE PAINTED INCLUDE BOTH SIDES. REFER TO MATERIAL & COLOR LEGEND SHEET A2.

## CASEWORK SCHEDULE

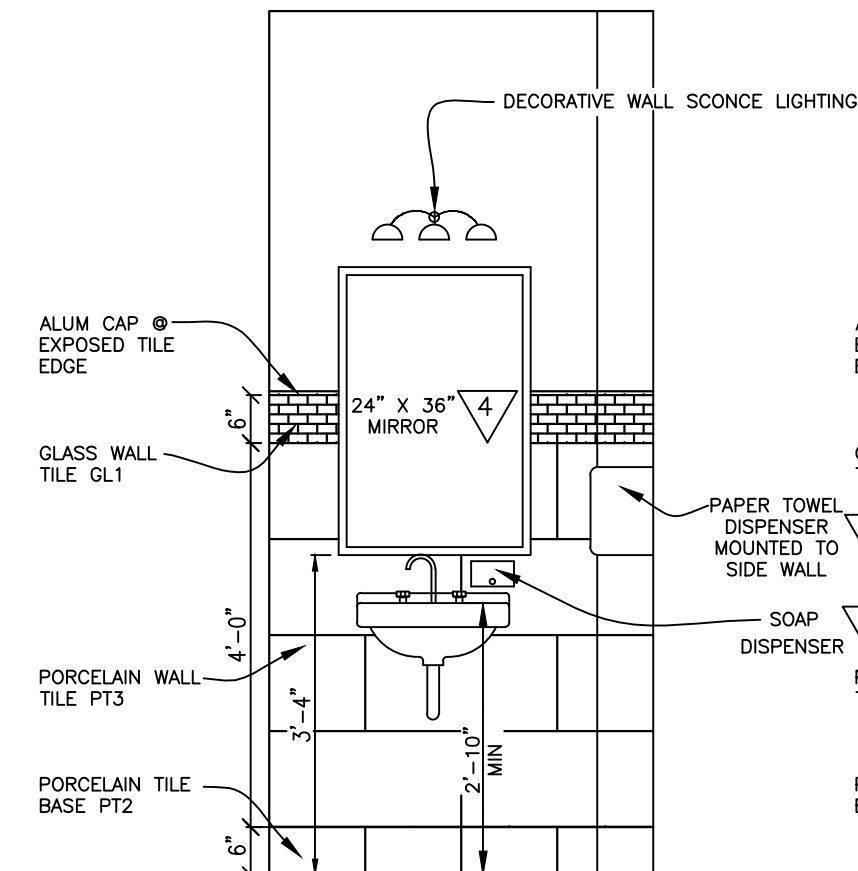
CASEWORK NUMBER	MANUFACTURER'S SERIES	W"	H"	D"	CASEWORK TYPE	ADJ. SHELF	DOORS	DRWRS	REMARKS
B1		14"	36"	23"	DRAWERS	-	-	4	
B2		18"	36"	23"	DOOR/DRAWER	1	1	1	
B3		18"	36"	23"	SINK CABINET	-	1	-	
B4		72"	36"	23"	CUSTOM VANITY SINK	-	2	5	
W1		14"	18"	16"	LEFT HINGED DOOR	1	1	-	
W2		18"	18"	16"	LEFT HINGED DOOR	2	1	-	
W3		18"	18"	16"	LEFT HINGED DOOR	2	1	-	
W4		24"	16"	16"	MICRO WAVE	-	-	-	

## CASEWORK NOTES

GENERAL CONTRACTOR TO VERIFY SIZE OF COUNTERTOPS. ALL CABINET JOINTS ARE TO BE FLUSH WITHOUT OVERLAPS. FIXTURES AND CONNECTIONS BY PLUMBING CONTRACTOR. COUNTERTOPS SHALL HAVE 4" H BACK SPLASH, FIELD JOINT & MARINE EDGED. COUNTERTOPS & BACKSPLASH SHALL BE SOLID SURFACE CORIAN. PROVIDE REAR, FRONT & CORNER FILLERS (SIZE VARIES) AS REQUIRED. ALL CASEWORK IS TO HAVE SOLID BACKS. ALL DIMENSIONS SHOWN ON CASEWORK SCHEDULE ARE NOMINAL DIMENSIONS.

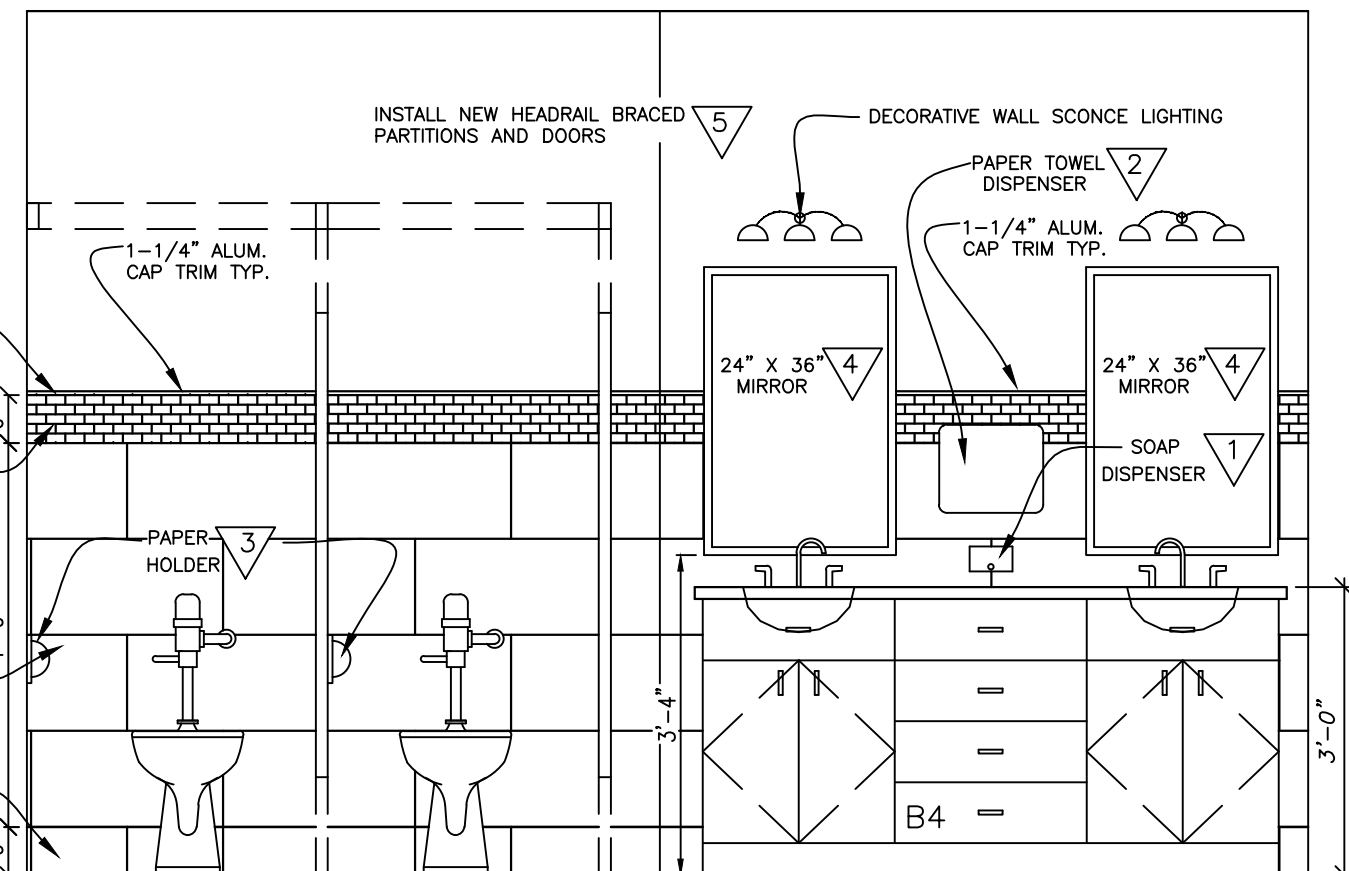
## ELEVATION C

SCALE: 1/2" = 1'-0"

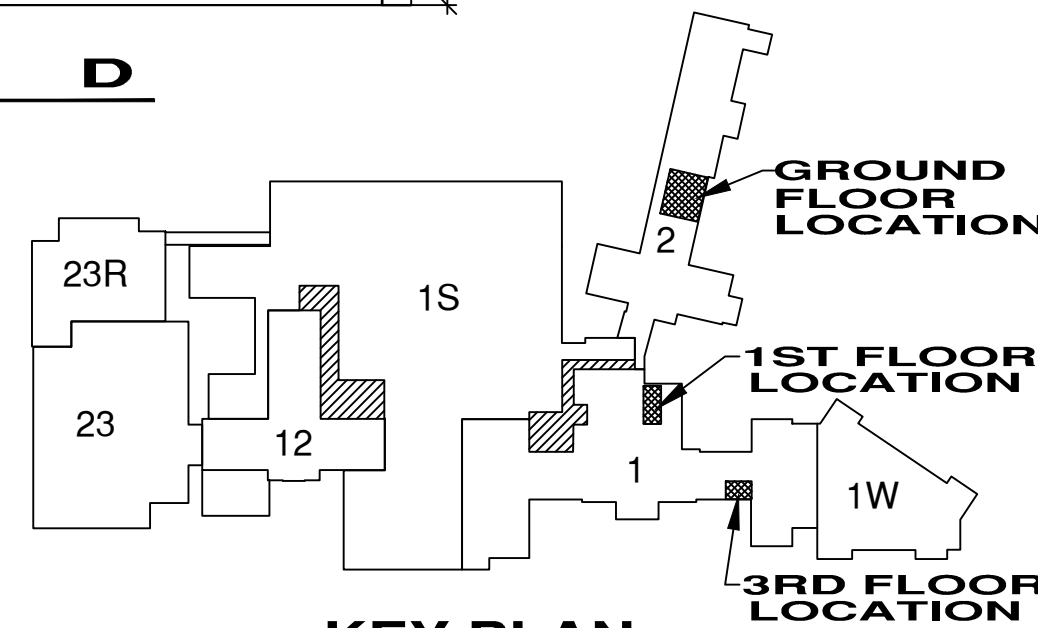


## ELEVATION D

SCALE: 1/2" = 1'-0"



## KEY PLAN



**UNITED STATES DEPARTMENT OF VETERANS AFFAIRS**  
VA MEDICAL CENTER - 1540 SPRING VALLEY DRIVE - HUNTINGTON WV 25704

DRAWING TITLE:  
**FIRST FLOOR PLANS,  
ELEVATIONS, SCHEDULES  
& DETAILS**

APPROVED:  
CHRIS ECKLES  
ASS'T CHIEF, ENGINEERING  
APPROVED:  
JOHN KLIM  
CHIEF, ENGINEERING

PROJECT TITLE:  
**LOCKER/BREAKROOM  
RENOVATION PROJECT**

BUILDING:  
1  
PROJECT NUMBER:  
14-109  
DRAWING NUMBER:  
**A3**  
DATE:  
JAN '14  
DWG.