

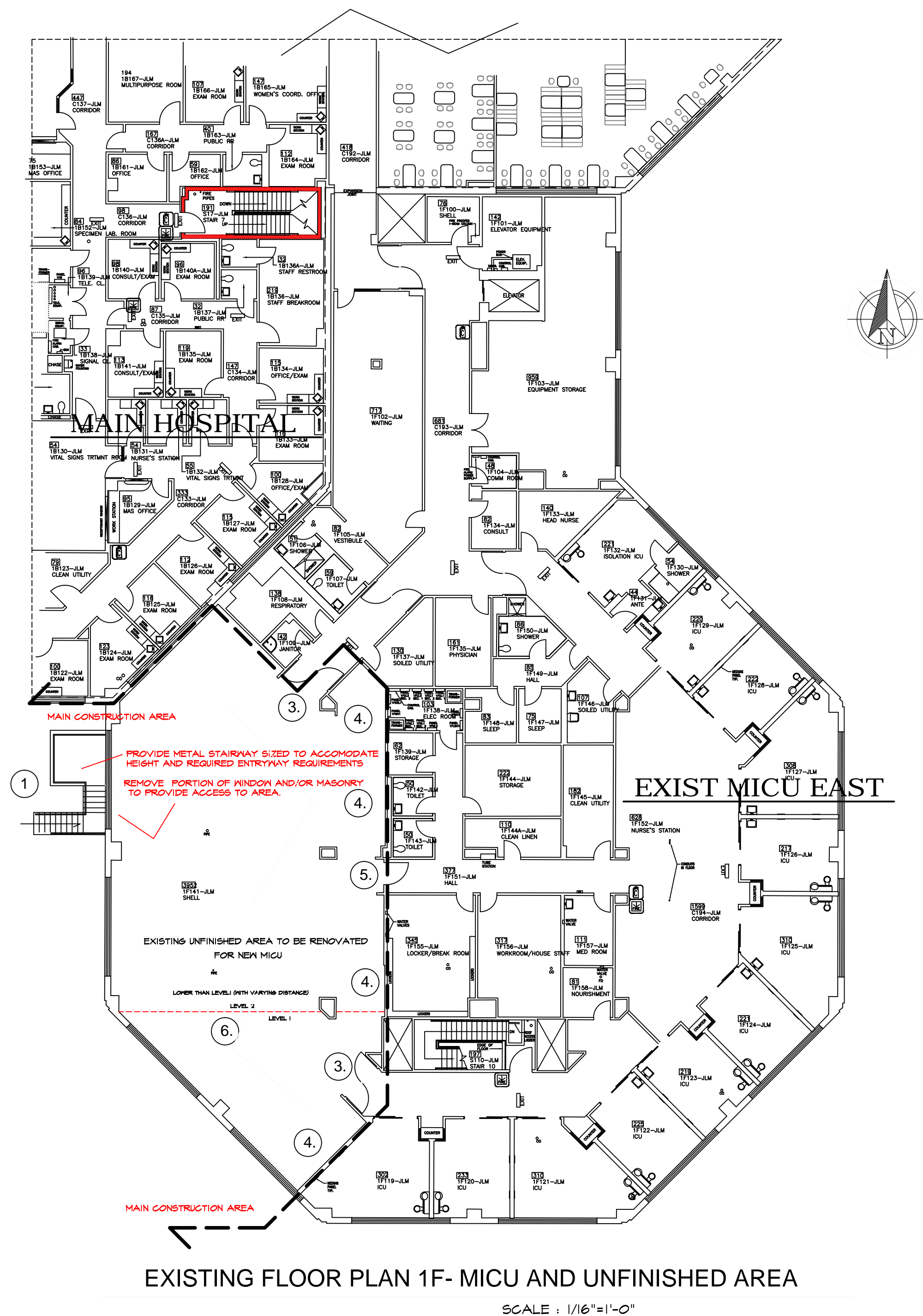
# JOHN L. McCLELLAN VETERAN'S MEMORIAL HOSPITAL

## LITTLE ROCK, ARKANSAS

### EXPAND MICU

#### ACCESS TO CONSTRUCTION AREA AND STAGING

1. ACCESS TO RENOVATION AREA SHALL BE FROM DESIGNATED PARKING AREA AND ROUTE OF ENTRY SHOWN. CONTRACTOR SHALL PROVIDE EXTERIOR ACCESS TO 1F WEST FLOOR AREA PROVIDE EXTERIOR STAIRWAY AND REMOVE EXISTING WINDOWS AND PORTION OF MASONRY AS REQUIRED FOR ACCESS, AND KEEPING AREA SECURE AND PROTECTED.
2. ACCESS TO THE EXISTING HOSPITAL AREA AND MICU EAST WILL BE LIMITED TO PERFORMING NECESSARY TIE INS AND RELATED WORK. OPERATION OF THE EXISTING MICU EAST WILL CONTINUE DURING THE RENOVATION OF THE UNFINISHED AREA. CONTRACTOR SHALL TAKE STEPS TO MITIGATE EXCESS NOISE THAT WILL INTERFERE WITH THE OPERATIONS. SOUND ATTENUATION SHALL BE PROVIDED AS NOTED.
3. THIS DOORWAY SHALL BE PROVIDED WITH WEATHERSTRIPPING AND BOTTOM SWEEPS TO MITIGATE SOUND TRANSMISSION TO THE EXISTING MICU. USE OF THIS DOORWAY SHALL BE LIMITED TO AS STATED ABOVE AND FOR EMERGENCY EXIT.
4. PROVIDE 2" RIGID INSULATION BOARD, ON DIVIDER WALL TO MITIGATE SOUND TRANSMISSION INTO THE EXISTING MICU EAST. SECURE INSULATION TO THE EXISTING GYP BD WITH SCREWS AND PLATES SUFFICIENT ENOUGH TO HOLD THE BOARD VERTICALLY AGAINST THE WALL. INSTALL BOARD FULL HEIGHT FROM FLOOR TO DECK ABOVE AGAINST THE EXIST WALL. INSULATION BOARD SHALL BE FOIL FACED, 3#/CF DENSITY WITH FOIL FACE AGAINST THE WALL.
5. BOARD SHALL COVER OVER THIS DOOR AND FRAME, SECURE WITH TAPE TO ALLOW QUICK REMOVAL IF EXIT OR ENTRY IS NECESSARY.
6. NOTE THAT EXISTING FLOOR SLAB ELEVATIONS ARE SLIGHTLY DIFFERENT AND SHALL BE MADE LEVEL BY APPLICATION OF UNDERLAYMENT AND SOME SMOOTHING OF EXISTING SLAB EDGE JOINT AS NECESSARY.



#### INDEX OF DRAWINGS

##### COVER SHEET

X1.1 PARKING, WORK NOTES, LIST OF DWGS

##### ARCHITECTURAL

A0.0R CODE INFORMATION

A0.1R 1st FLOOR LIFE SAFETY PLAN  
A1.1R GROUND FLOOR REFERENCE PLAN  
A2.1R FIRST FL. REFERENCE AND NEW MICU PLAN  
A3.1R FIRST FLOOR DIMENSION PLAN  
A4.1R GROUND FLOOR REFLECTED CEILING PLAN  
A5.1R FIRST FLOOR REFLECTED CEILING PLAN  
A6.1R ROOF PLAN & DETAILS  
A7.1R WALL SECTIONS  
A8.1R LARGE SCALE PLANS, INTERIOR ELEVATIONS & ACCESSORIES SCHEDULE  
A9.1R DOOR & FRAME SCHEDULE-FINISH SCHEDULE

##### FIRE PROTECTION

FA-1R FIRST FLOOR PLAN - FIRE PROTECTION - EXIST  
FA-2R FIRST FLOOR PLAN - FIRE PROTECTION- NEW PLAN  
FA-3R GENERAL NOTES AND DETAILS - FIRE PROTECTION

##### PLUMBING

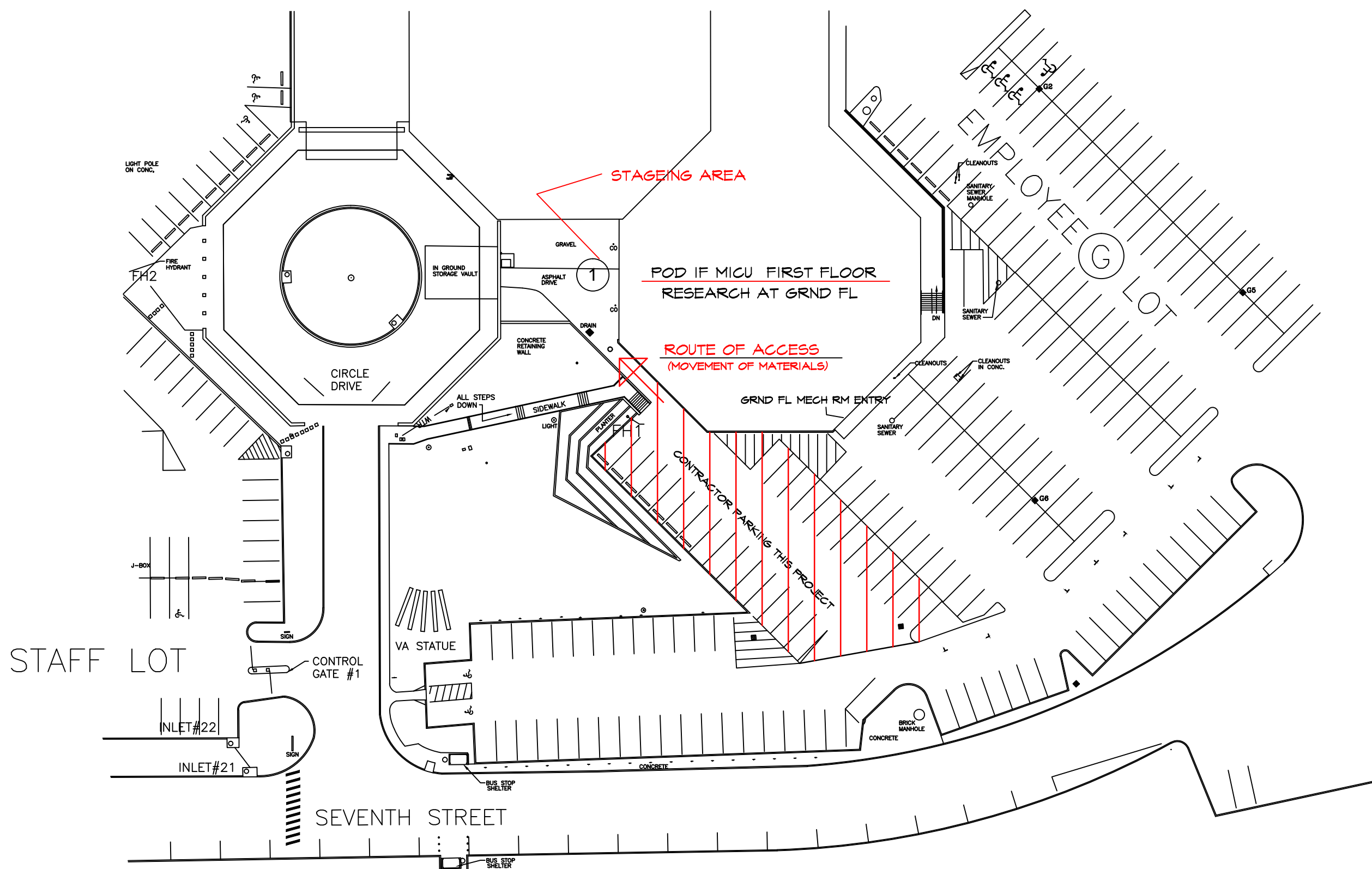
PL-1R PLUMB LEGEND SCHEDULE AND NOTES  
PL-2R FIRST FLOOR PLAN - PLUMBING  
PL-3R ROOF PLAN - PLUMBING AND MEDICAL GAS  
PL-4R FIRST FLOOR PLAN - MEDICAL GAS  
PL-5R DETAILS - PLUMBING

##### MECHANICAL

MH-1R FIRST FLOOR DUCTWORK  
MH-2R FIRST FLOOR HVAC PIPING  
MH-3R ROOF PLAN - HVAC  
MH-4R DETAILS - HVAC  
MH-5R DETAILS - HVAC  
MH-6R DETAILS - HVAC  
MH-7R CONTROLS - HVAC  
MH-8R CONTROLS - HVAC  
MH-9R CONTROLS - HVAC  
MH-10R CONTROLS - HVAC  
MH-11R SCHEDULES AND LEGEND - HVAC  
MH-12R SCHEDULES - HVAC

##### ELECTRICAL

ES-1R SCHEDULES, DETAILS, AND GENERAL NOTES - ELECTRICAL  
ES-2R FIRST FLOOR PLAN - LIGHTING  
ES-3R FIRST FLOOR PLAN - POWER  
ES-4R FIRST FLOOR PLAN - SYSTEMS  
ES-5R PARTIAL FLOOR PLANS - ELECTRICAL AND SINGLE LINE  
ES-6R RISER DIAGRAMS - SYSTEMS  
ES-7R PANEL SCHEDULES - ELECTRICAL



EXISTING PARKING PLAN AT F POD AND VICINITY

APPROVED: MEDICAL CENTER DIRECTOR	APPROVED: CHIEF OF STAFF	APPROVED: WOMEN VET. PROG. COORD.	APPROVED: SERVICE CHIEF	APPROVED:
APPROVED: DEPUTY MEDICAL CENTER DIRECTOR	APPROVED: FACILITY PLANNER	APPROVED: SERVICE CHIEF	APPROVED: SERVICE CHIEF	APPROVED:
APPROVED: ASSOCIATE DIRECTOR	APPROVED: CHIEF ENGINEER	APPROVED: SERVICE CHIEF	APPROVED: SERVICE CHIEF	APPROVED:

DRAWING TITLE

PARKING,WORK NOTES  
LIST OF DWGS

PROJECT TITLE

JLM MEMORIAL VETERANS  
HOSPITAL- EXPAND MICU

DATE

NOV 2013

PROJECT NUMBER

BUILDING NUMBER

1

CHECKED

JM

DRAWN

RS

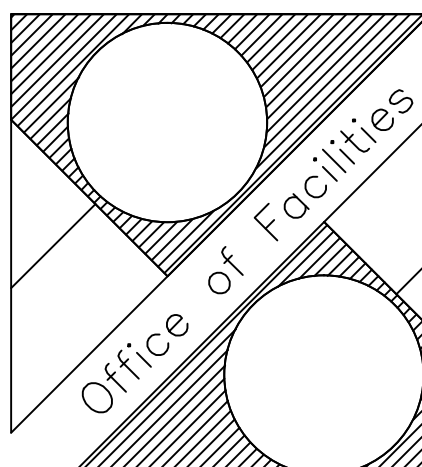
LOCATION

CAVHS LITTLE ROCK, AR

DRAWING NO.

X1.0R

Dwg 1 of 1



DEPARTMENT OF  
VETERANS AFFAIRS

