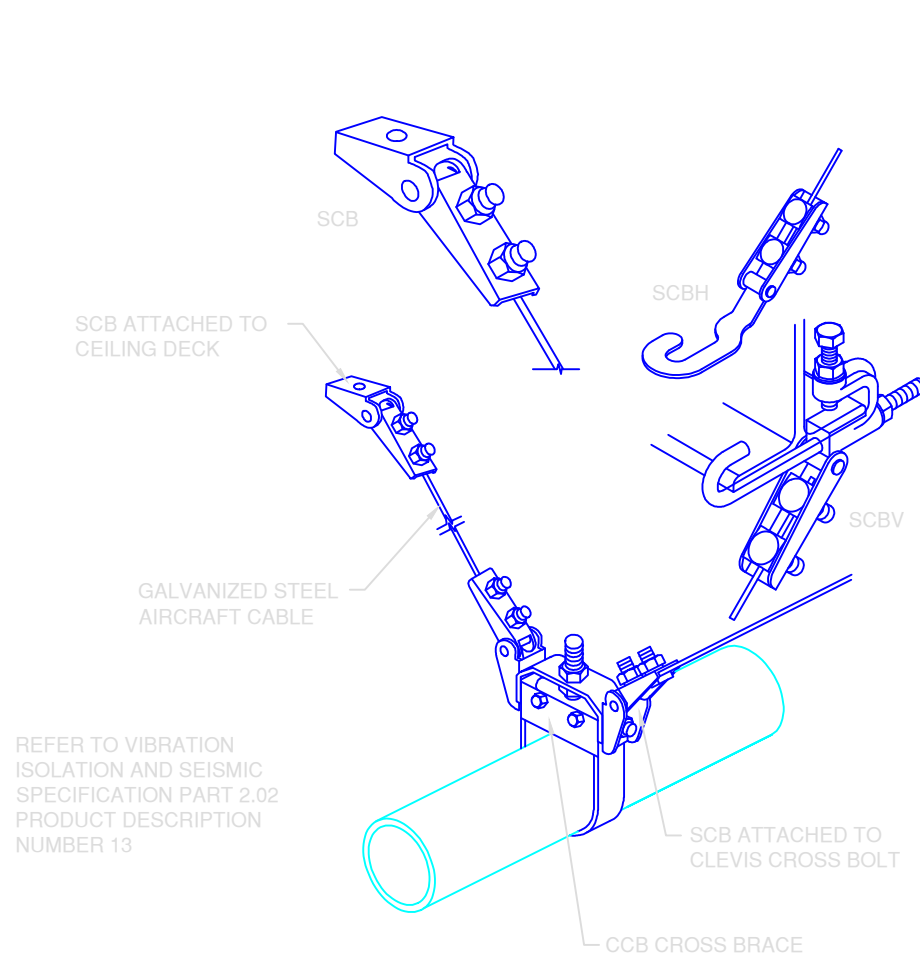
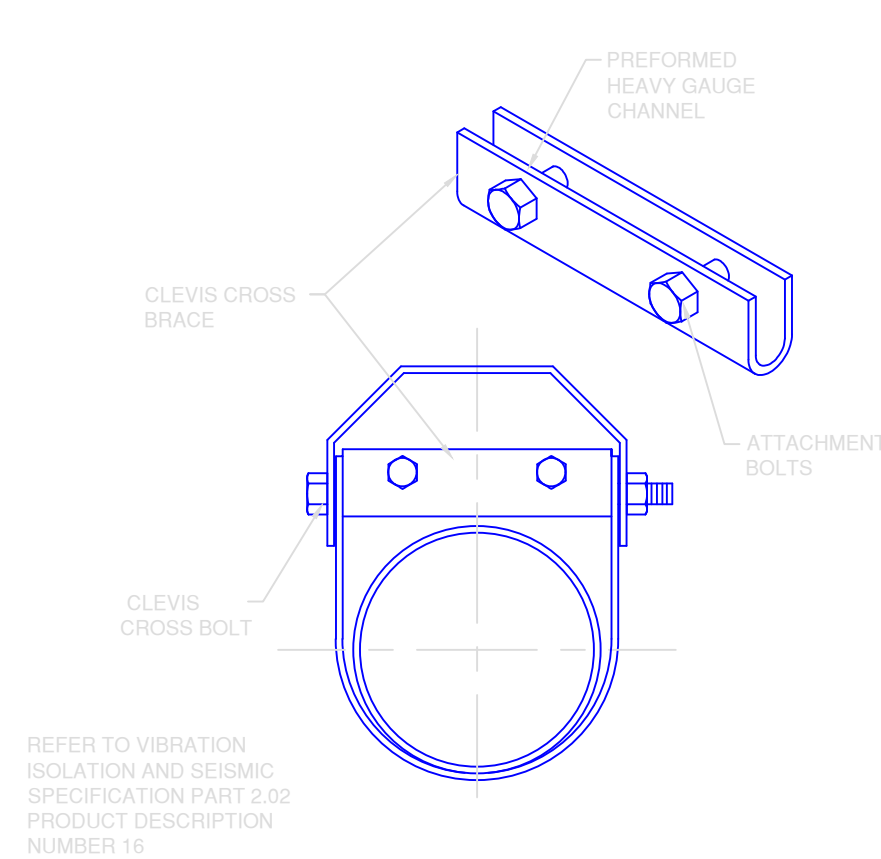


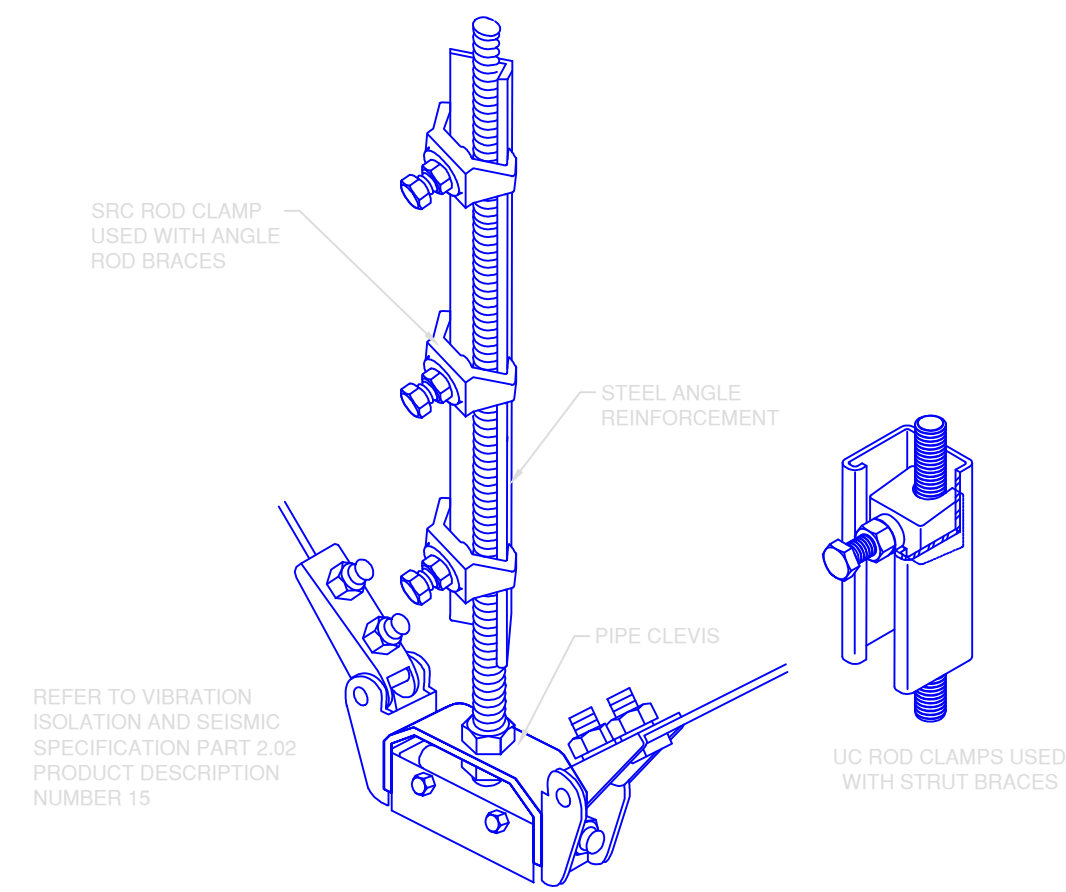
1 **HG NEOPRENE BUSHING**  
NOT TO SCALE



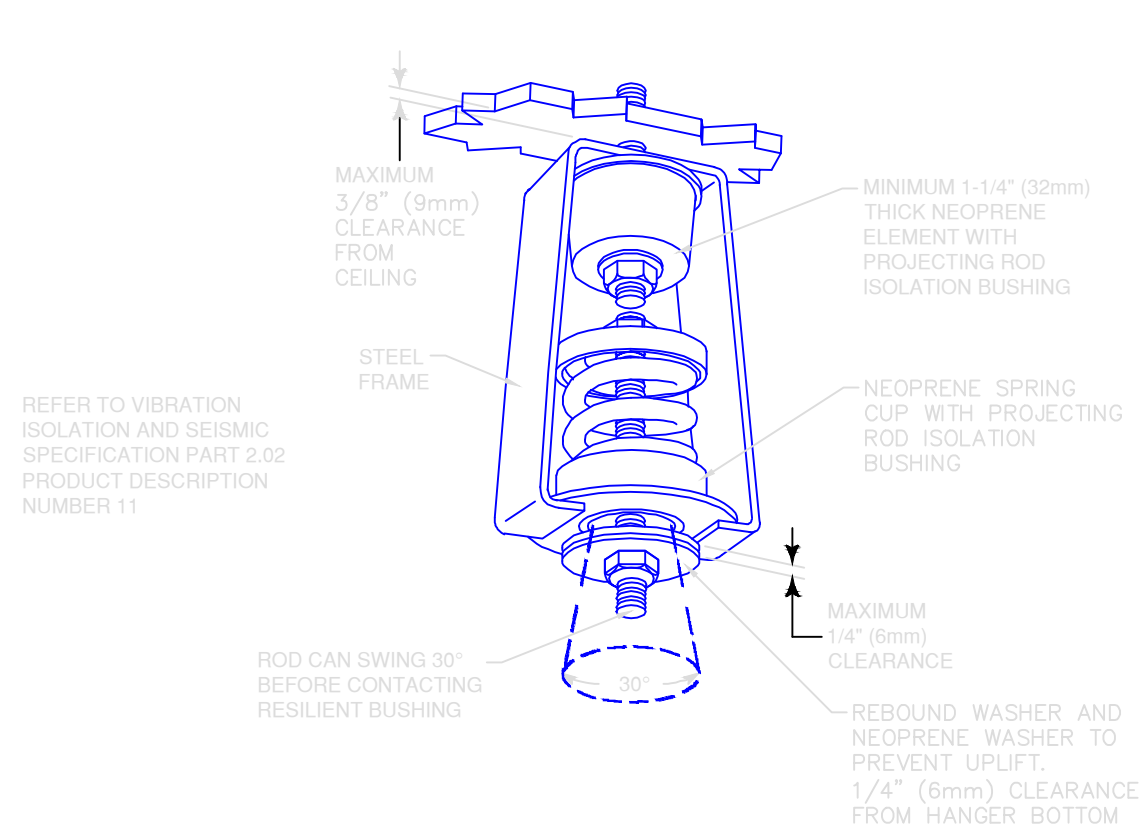
2 **SCB, SCBH, AND SCBV CABLE RESTRAINTS**  
NOT TO SCALE



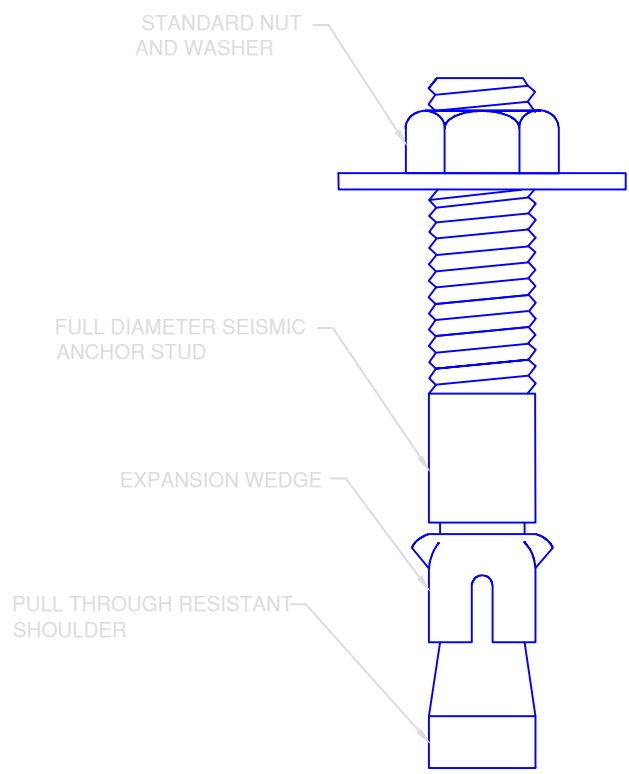
3 **CCB CLEVIS CROSS BRACE**  
NOT TO SCALE



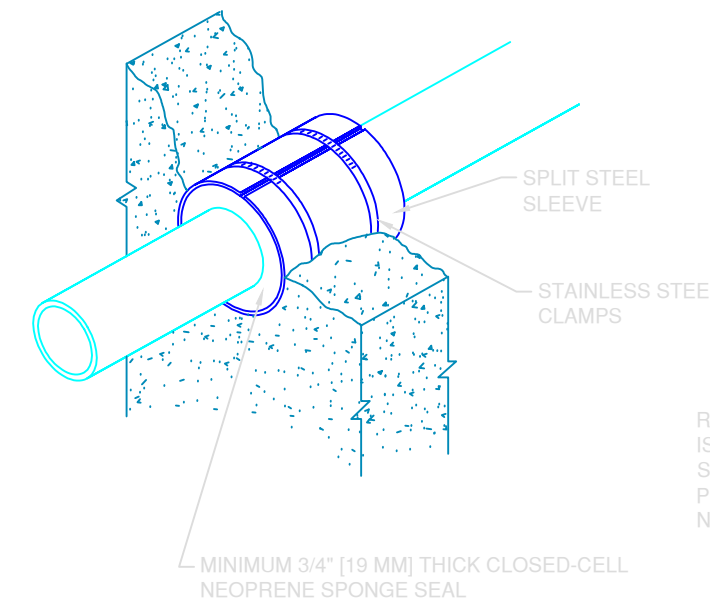
4 **SRC AND UC SEISMIC ROD CLAMPS**  
NOT TO SCALE



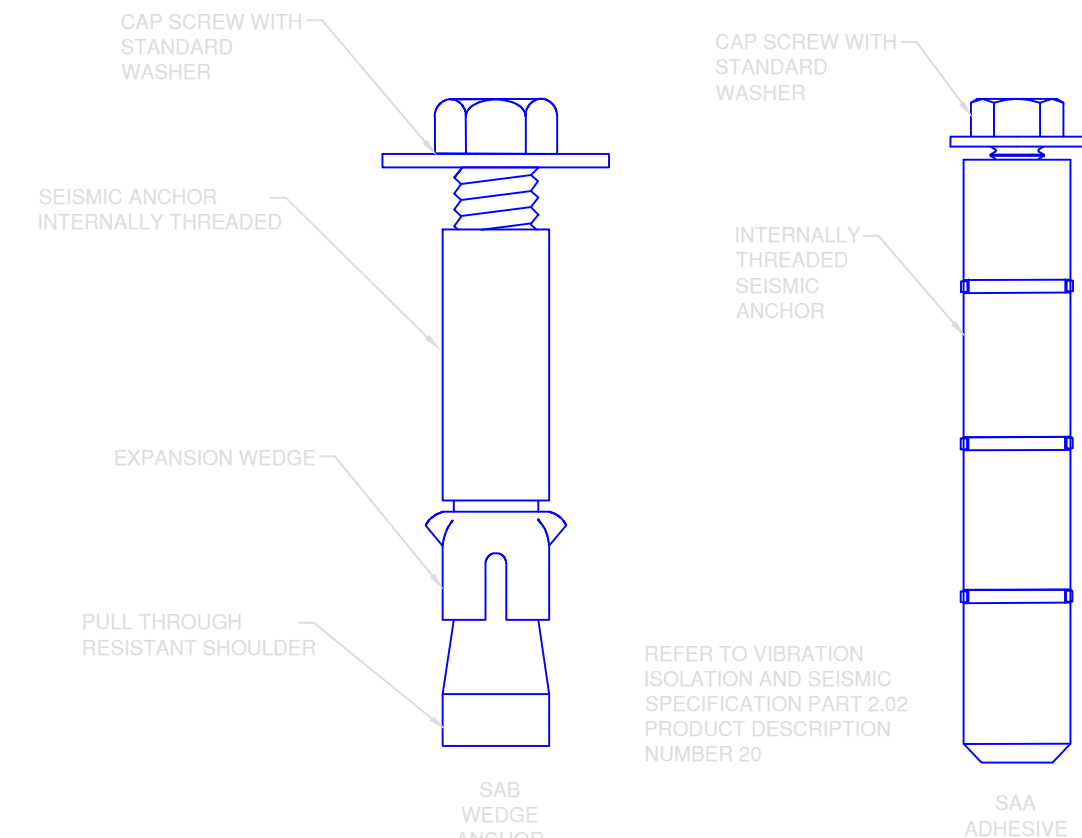
5 **RW30N SPRING AND NEOPRENE HANGER WITH REBOUND WASHER**  
NOT TO SCALE



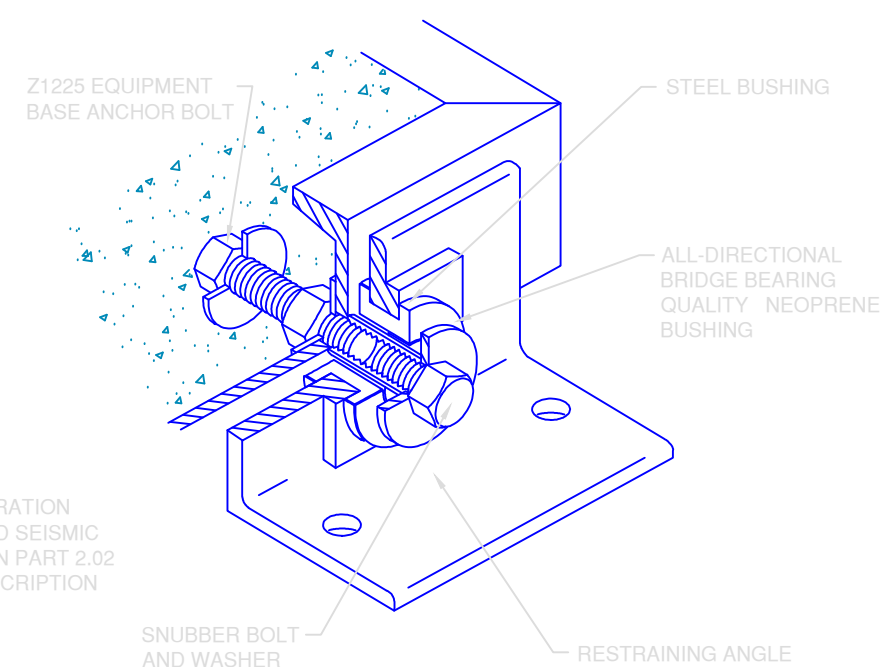
6 **SAS SEISMIC ANCHOR STUD**  
NOT TO SCALE



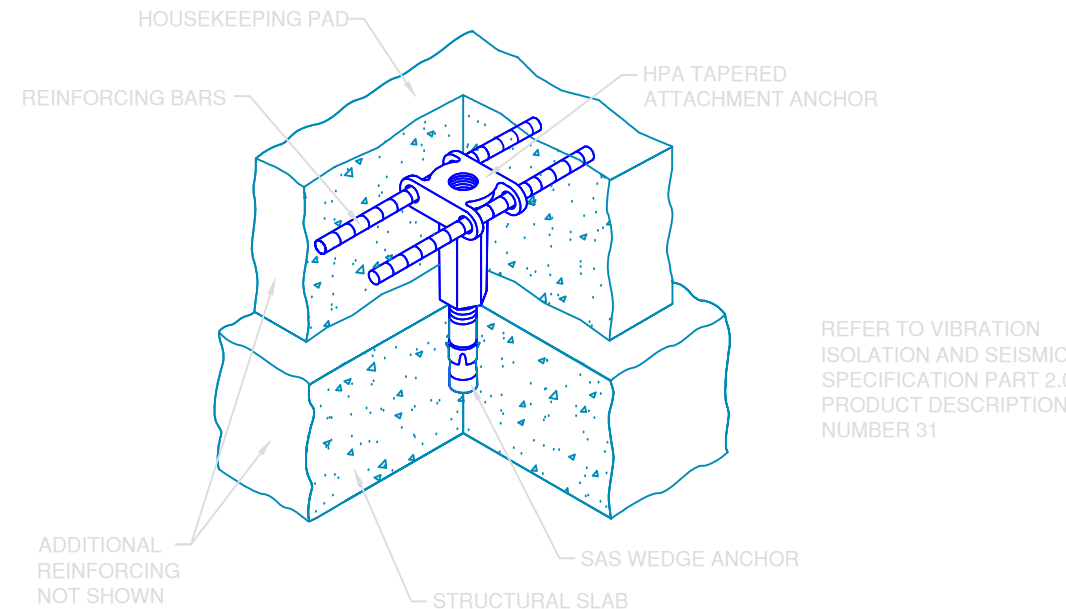
7 **SWS ACOUSTICAL WALL, CEILING, OR FLOOR SEAL**  
NOT TO SCALE



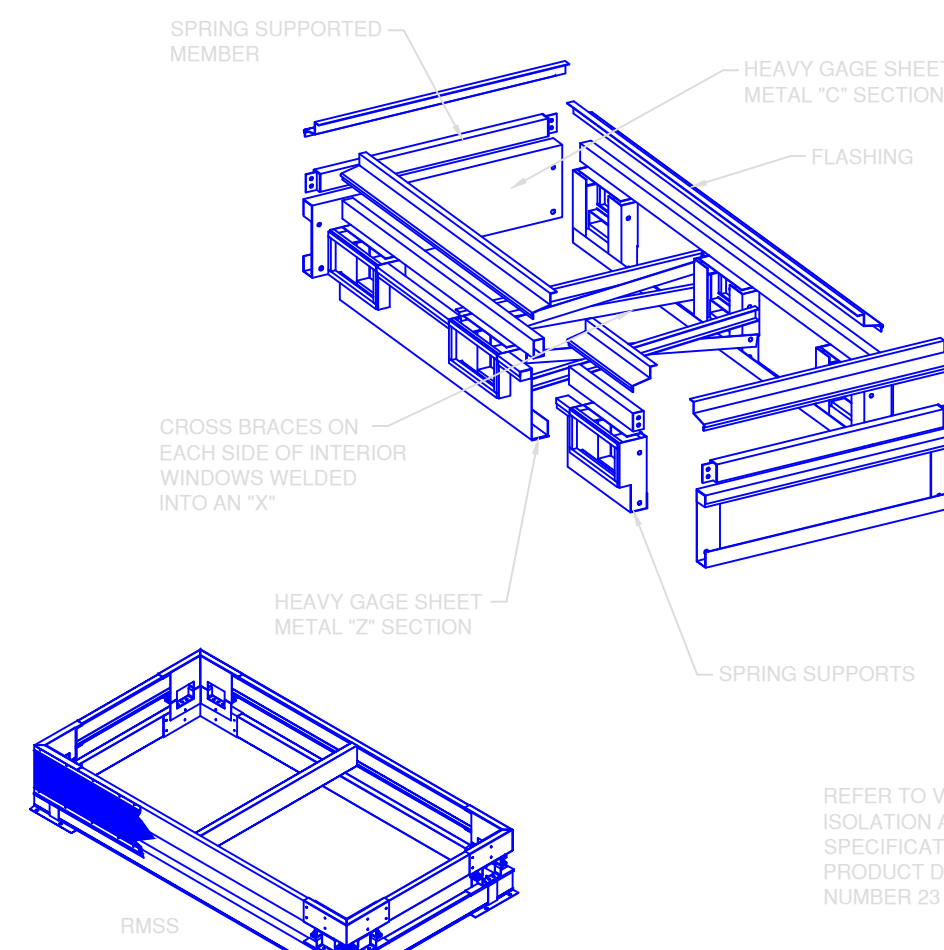
8 **SAB AND SAA SEISMIC ANCHOR BOLT**  
NOT TO SCALE



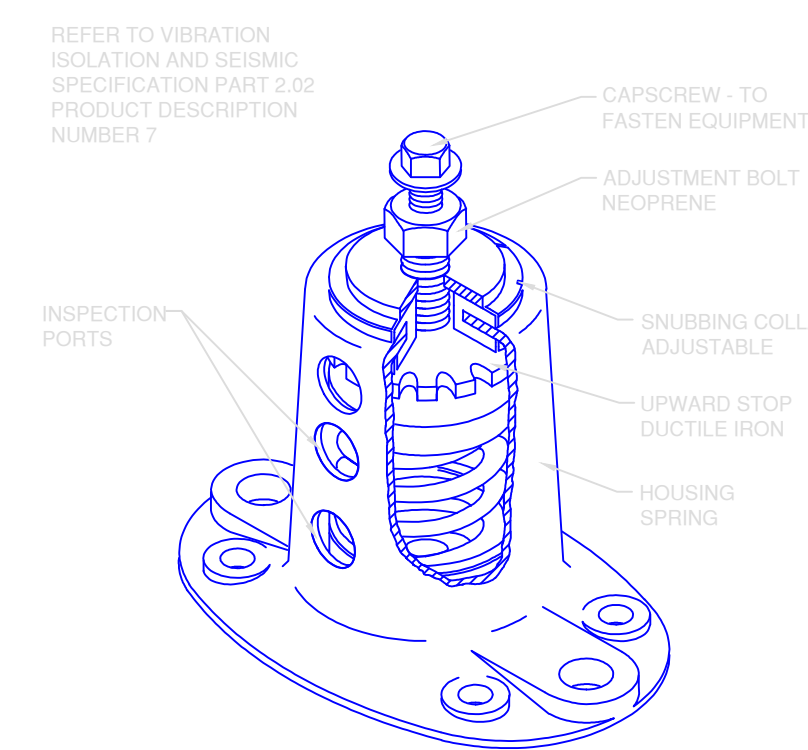
9 **Z1225 ALL DIRECTIONAL SEISMIC SNUBBER**  
NOT TO SCALE



10 **HOUSEKEEPING PAD ANCHOR**  
NOT TO SCALE



11 **SRSC & RMSS SEISMIC ROOFTOP CURB**  
NOT TO SCALE



12 **SSLFH HOUSED SPRING MOUNT**  
NOT TO SCALE

## USE APPLICABLE DETAILS

Revisions	Date	Approved: Medical Center Director	Seals		TAGGART FOSTER-CURRENCE GRAY ARCHITECTS, INC. 4500 Burrow Drive North Little Rock, AR 72118 Phone: 501-758-7443 Fax: 501-753-7309 www.taggararch.com	Drawing Title <b>DETAILS - HVAC</b>	Project Title <b>JLM MEMORIAL VETERAN'S HOSPITAL - EXPAND MICU</b>	Date <b>NOV 2013</b>	Project No. <b>XXXXX</b>	Building Number <b>1-JLM</b>	Checked <b>JM</b>	Modified <b>P&amp;D</b>	DRAWING NO. <b>MH-5R</b>	Office of Facilities	DEPARTMENT OF VETERANS AFFAIRS
		Approved: Associate Director													
Approved: Chief Of Staff															
Location <b>CAVHS LITTLE ROCK, AR</b>															
Dwg 5 Of 12															