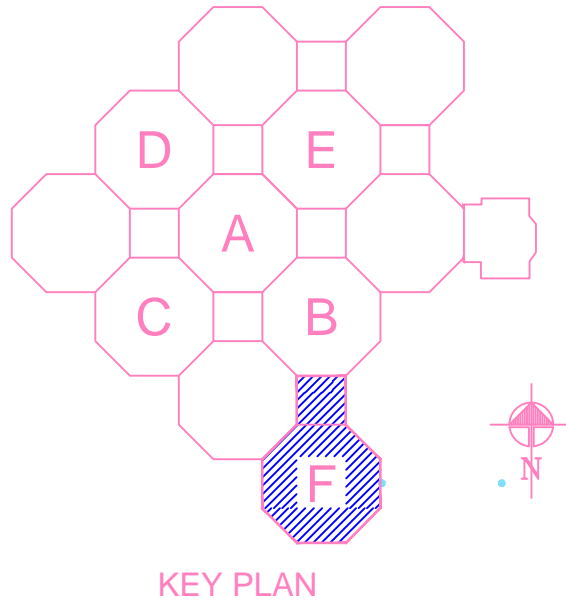


ROOF PLAN KEY NOTES

- 1 SINGLE SOLDIER COURSE AND ROWLOCK AT TOP OF WALL BELOW METAL COPING.
- 2 BRICK VENEER - RUNNING BOND
- 3 6" 18 GA. METAL STUDS @ 16" O. C.
- 4 6" KRAFT FACED INSULATION. R=19
- 5 3/8", TYPE X, GYP. BOARD.
- 6 DOUBLE SOLDIER COURSE
- 7 1/2" "DENS-GLASS" GOLD SHEATHING.
- 8 ARCHED BRICK SOLDIER COURSES.
- 9 RECESS BRICK AND EIFS PANELS 1/2" ABOVE WINDOWS.
- 10 ROLLED TUBE STEEL LINTLE. SEE STRUCTURAL.
- 11 WOOD BLOCKING AT WINDOWS.
- 12 BRICK TIES @ 16" o.c. EACH WAY.
- 13 STOREFRONT ALUMINUM WINDOW FRAMES.
- 14 THRU WALL MEMBRANE FLASHING AT ALL OPENINGS. EXTEND 8" PAST OPENING EACH WAY.
- 15 ROLLED STEEL LINTLE AT ALL OPENINGS. SEE STRUCTURAL FOR DETAILS.
- 16 PROVIDE WEEP HOLES AT 32" O. C.
- 17 BRICK VENEER BEYOND.
- 18 BRICK SILL AT OPENINGS.
- 19 VERTICAL ANGLE SUPPORT FOR PARAPET
- 20 CONT. THRU WALL MEMBRANE FLASHING AT SLAB EDGE. EXTEND OVER BRICK LEDGE BELOW.
- 21 CONTINUOUS EXISTING BRICK LEDGE
- 22 2 SOLDIER COURSES AT HEIGHT SHOWN. SEE ELEVATIONS FOR EXTENTS.
- 23 5 1/2" CONCRETE SLAB ON METAL DECK WITH BENT PLATE AT EDGE.
- 24 SLIDE CLIP ATTACHMENT FOR METAL STUDS. SEE STRUCTURAL FOR DETAILS.
- 25 PROVIDE WEEP HOLES AT 32" O.C. AT BRICK LEDGE.
- 26 SLIP TRACK AT TOP OF METAL STUD WALL. NEW ALUMINUM LOUVER FOR MECHANICAL EQUIPMENT. SEE MECHANICAL FOR SIZE AND CONFIGURATION.
- 27 WOLMANIZED 2X AT EDGE OF LIGHT-WEIGHT INSULATING CONCRETE ROOF DECK.
- 28 FILL BEHIND BRICK WITH GROUT AT FINISH GRADE.
- 29 PROVIDE WEEP HOLES AT 32" O.C. ABOVE FINISH GRADE AS SHOWN.
- 30 1/2" EXPANSION JOINT MATERIAL AND SEALANT CONTINUOUS AT CONCRETE CURB AND BRICK.
- 31 CONCRETE CURB AT EXTERIOR OF BUILDING AS SHOWN. SEE SITE PLAN FOR LIMITS.
- 32 ASPHALT PAVING AT EXTERIOR OF BUILDING WHERE EXISTING ASPHALT HAS BEEN DISTURBED.
- 33 WALL BASE. SEE FINISH SCHEDULE.
- 34 PROVIDE 6" CONCRETE FLOOR AT GRADE LEVEL.
- 35 TYP. POURED CONCRETE FOOTING AND STEM WALL. SEE STRUCTURAL FOR DETAILS.
- 36 SINGLE PLY THERMOPLASTIC ROOFING TO EXTEND OVER PARAPET AND ATTACH TO WOOD BLOCKING WITH TERM. BARS.
- 37 INFILL EXISTING WINDOWS WITH 1 1/2" STUDS WITH ONE LAYER OF 3/8" TYPE X GYP BRD
- 38 SHADED AREAS OF WALL SECTIONS INDICATE EXISTING WALLS
- 39 REMOVE EXISTING PARAPET TO ROOF SLAB INCLUDING SUPPORTING ANCHORS.
- 40 REMOVE EXISTING BRICK AT PARAPET DOWN TO SHELF ANGLE AT AREAS INDICATED.
- 41 STRUCTURAL FRAME BUILDING ELEMENTS SHALL BE CONSTRUCTED AS PER UL DESIGN # XB29/XB27-2 HOUR RATING.
- 42 FLOOR CONSTRUCTION INCLUDING SUPPORTING BEAMS AND JOISTS SHALL BE CONSTRUCTED AS PER UL DESIGN #DB58-2 HOUR RATING.
- 43 ROOF CONSTRUCTION INCLUDING SUPPORTING BEAMS AND JOISTS SHALL BE CONSTRUCTED AS PER UL DESIGN #P922-1 HOUR RATING.
- 44 WALLS CONSTRUCTED AGAINST EXISTING CONSTRUCTION SHALL BE FURRED WITH 1-1/2" STUDS WITH 3/8" TYPE X GYP. BRD. WITH A 2" SEPARATION BETWEEN NEW AND OLD CONSTRUCTION.
- 45 PROVIDE 3/4" SOLID SURFACE WINDOW SILLS AS SHOWN. TYP. AT ALL WINDOWS.



REFERENCE DWG.

<div>1</div> <div>ADDENDUM #2.</div>	8-27-08	Approved: Medical Center Director	Approved: Facility Planner	<div>REGISTERED ARCHITECTS</div> <div>No. C-130</div> <div>ARKANSAS</div>	<div>New TFCC logo-blue 08-28-03.tif</div>	<div>TAGGART FOSTER-CURRENCE GRAY ARCHITECTS, INC.</div> <div>4500 Burrow Drive</div> <div>North Little Rock, AR 72116</div> <div>Phone: 501-758-7443</div> <div>Fax: 501-753-7309</div> <div>www.taggarch.com</div>	Drawing Title	Project Title		Date
		WALL SECTIONS					JLM MEMORIAL VETERAN'S HOSPITAL - EXPAND MICU		NOV 2013	
							Building Number	Checked	Revised	
							1- JLM	J.M.	P&D	
		Location		DRAWING NO.						
		CAVHS LITTLE ROCK, AR		A6.1R						
				Dwg 8 Of 10						
Revisions		Date 11/13		Office of Facilities						

DEPARTMENT OF VETERANS AFFAIRS