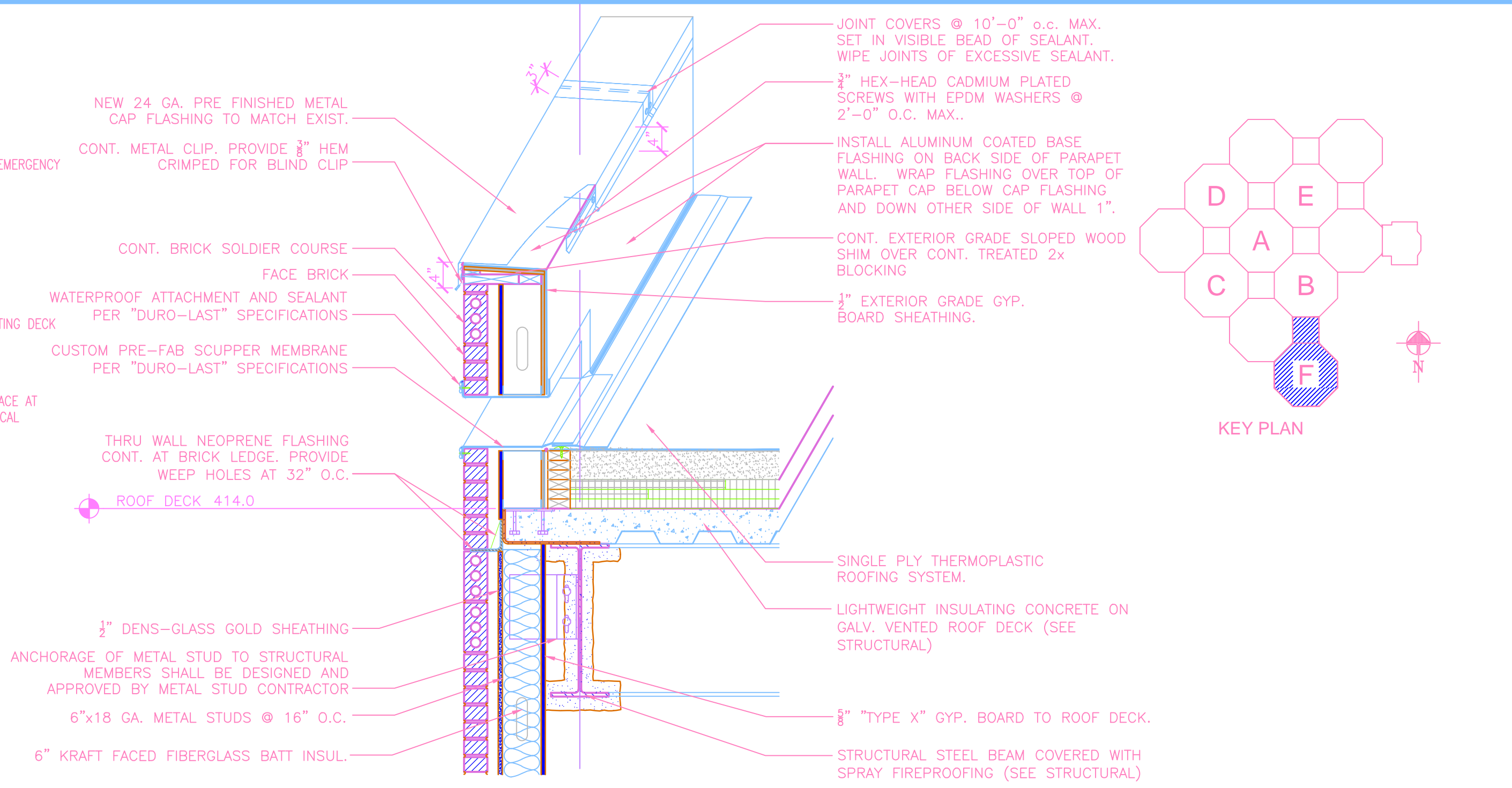


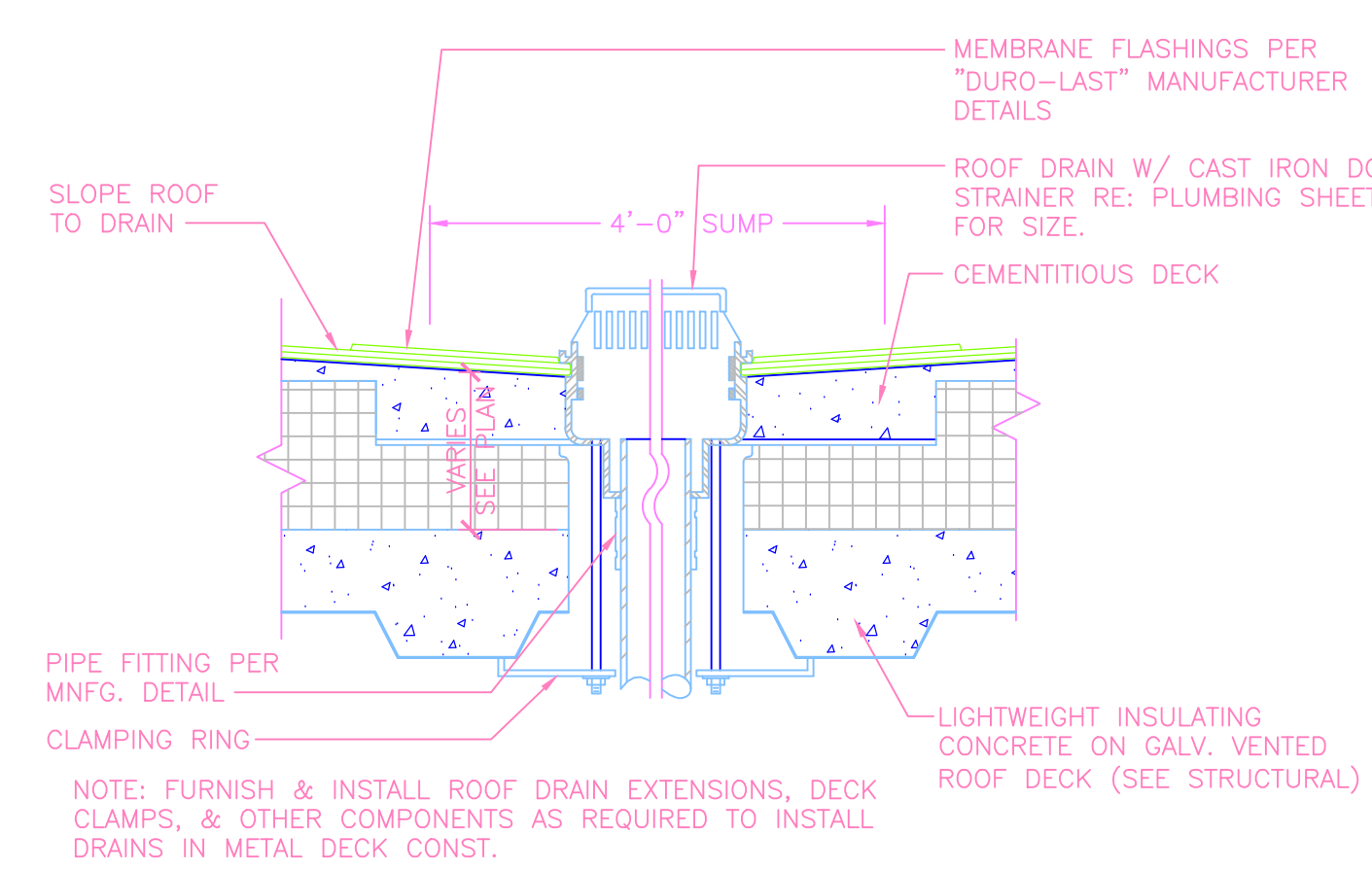
1 ROOF PLAN
1/8" = 1'-0"

KEYED NOTES:

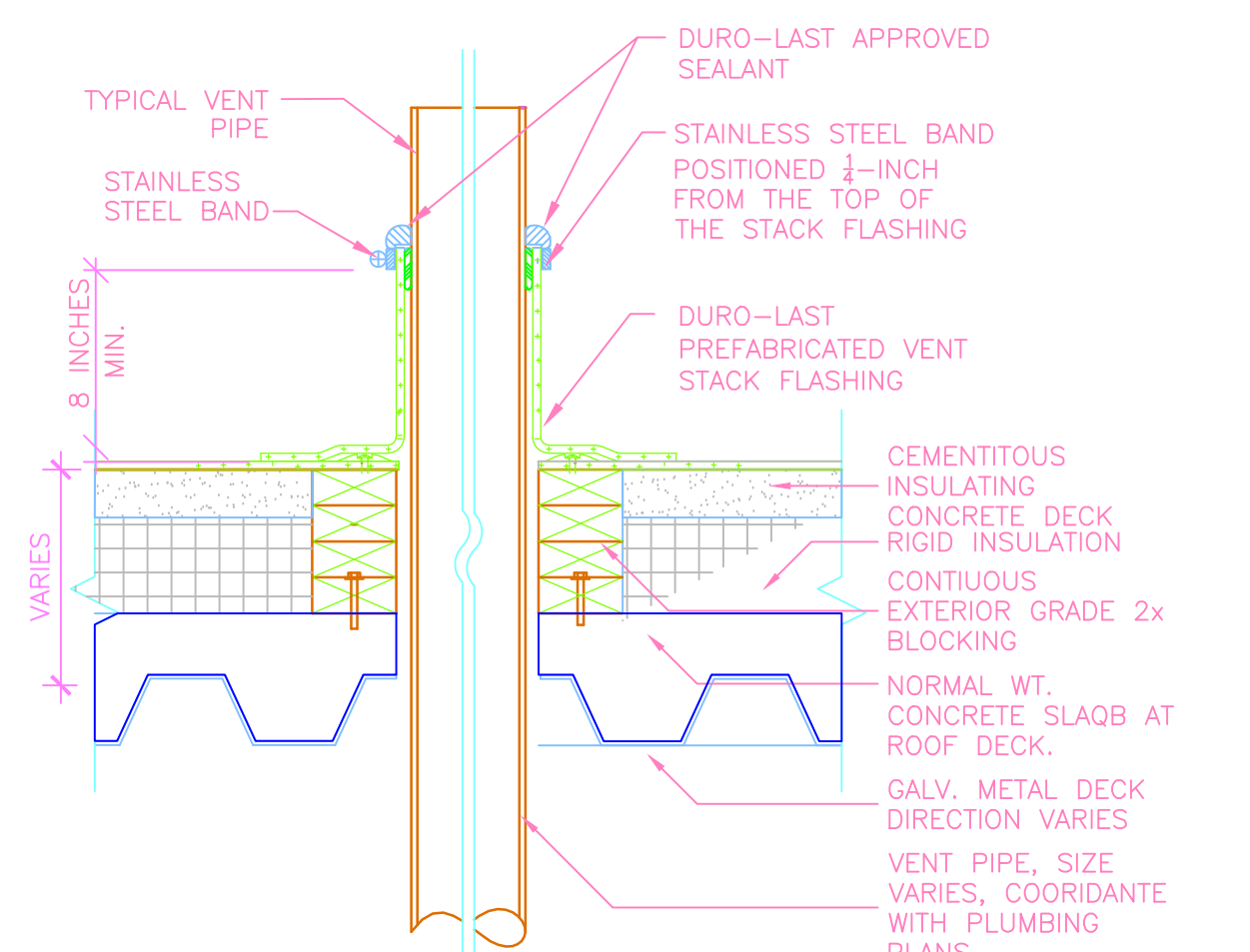
- 1 EMERGENCY OVERFLOW SCUPPER.
- 2 ROOF DRAIN WITH 4'-0" SLUMP. (TYP.)
- 3 ROOF DRAIN WITH 4'-0" SLUMP AND EMERGENCY OVERFLOW DRAIN. EMERGENCY OVERFLOW TO BE INSTALLED 2" ABOVE DRAIN LEVEL. (TYP.)
- 4 NEW ROOF HATCH.
- 5 24 GA. METAL ROOF COPING TO MATCH EXISTING.
- 6 RE-LOCATE EXISTING EXHAUST FAN - SEE MECHANICAL.
- 7 PROVIDE TERMINATION BAR & EXPANSION JOINT AS DETAILED AT EXISTING BUILDING.
- 8 INDICATES THICKNESS IN INCHES OF LIGHTWEIGHT CONCRETE INSULATING DECK ABOVE TOP OF METAL ROOF DECK
- 9 ROOF TO WALL EXPANSION JOINT. REFER TO DETAIL THIS SHEET.
- 10 EXISTING DUCT AND SURROUNDING CONSTRUCTION TO REMAIN IN PLACE AT PARAPET CROSSOVER. REROUTE DUCT BELOW ROOF - SEE MECHANICAL.



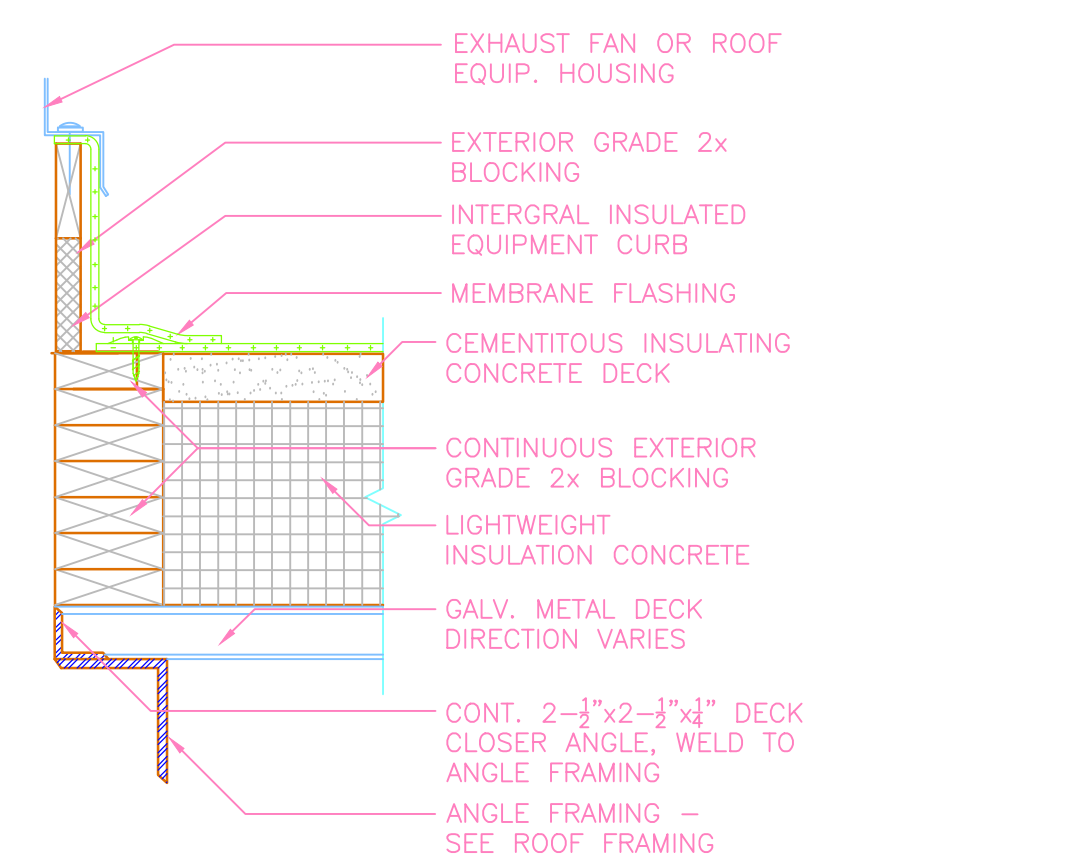
2 TYP. PARAPET DETAIL @ SCUPPER
3/4" = 1'-0"



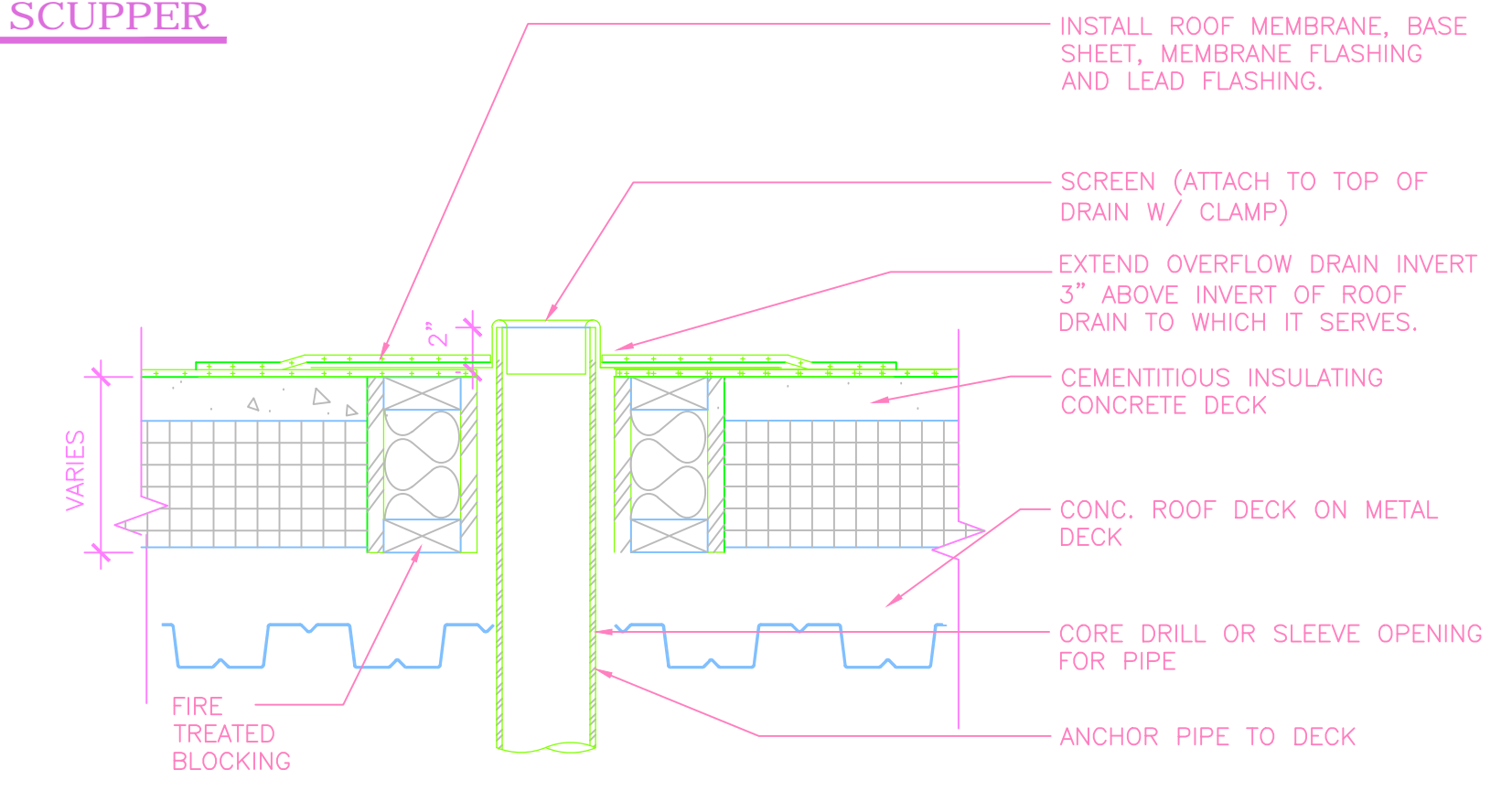
3 TYP. ROOF DRAIN DETAIL
1-1/2" = 1'-0"



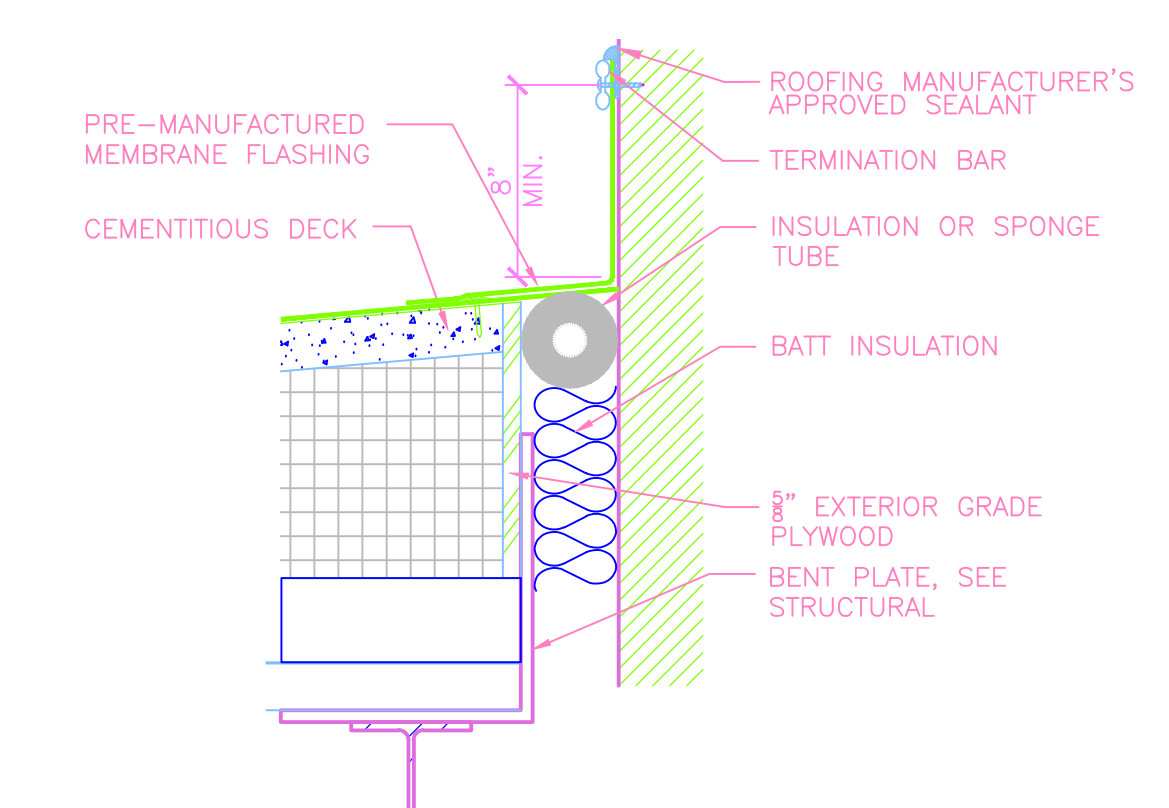
4 TYP. VTR DETAIL
1-1/2" = 1'-0"



5 TYP. EQUIPMENT/HATCH CURB DETAIL
1-1/2" = 1'-0"



8 TYP. EMERGENCY OVERFLOW DETAIL
1-1/2" = 1'-0"



7 TYP. ROOF TO WALL EXPANSION JT. DETAIL
1-1/2" = 1'-0"

REFERENCE APPLICABLE DETAILS

Approved: Medical Center Director		Approved: Facility Planner		TAGGART FOSTER-CURRENCE GRAY ARCHITECTS, INC.		Drawing Title		Project Title		Date	
Approved: Associate Director		Approved: Chief Engineer		4500 Burrow Drive		ROOF PLAN AND DETAILS		JLM MEMORIAL VETERAN'S HOSPITAL - EXPAND MICU		NOV 2013	
Approved: Chief Of Staff		Approved: Women Veterans Program Coordinator		North Little Rock, AR 72116				Building Number		Checked	Revised
				Phone: 501-758-7443				1-JLM		J.M.	P&D
				Fax: 501-753-7309				Location		Dwg 7 Of 10	
				www.taggararch.com				CAVHS LITTLE ROCK, AR			

Revisions

Date 11/13

REGISTERED ARCHITECTS

No. C. 135

ARKANSAS

NEW TFCC logo-blue 08-28-03.tif

Office of Facilities

DEPARTMENT OF VETERANS AFFAIRS