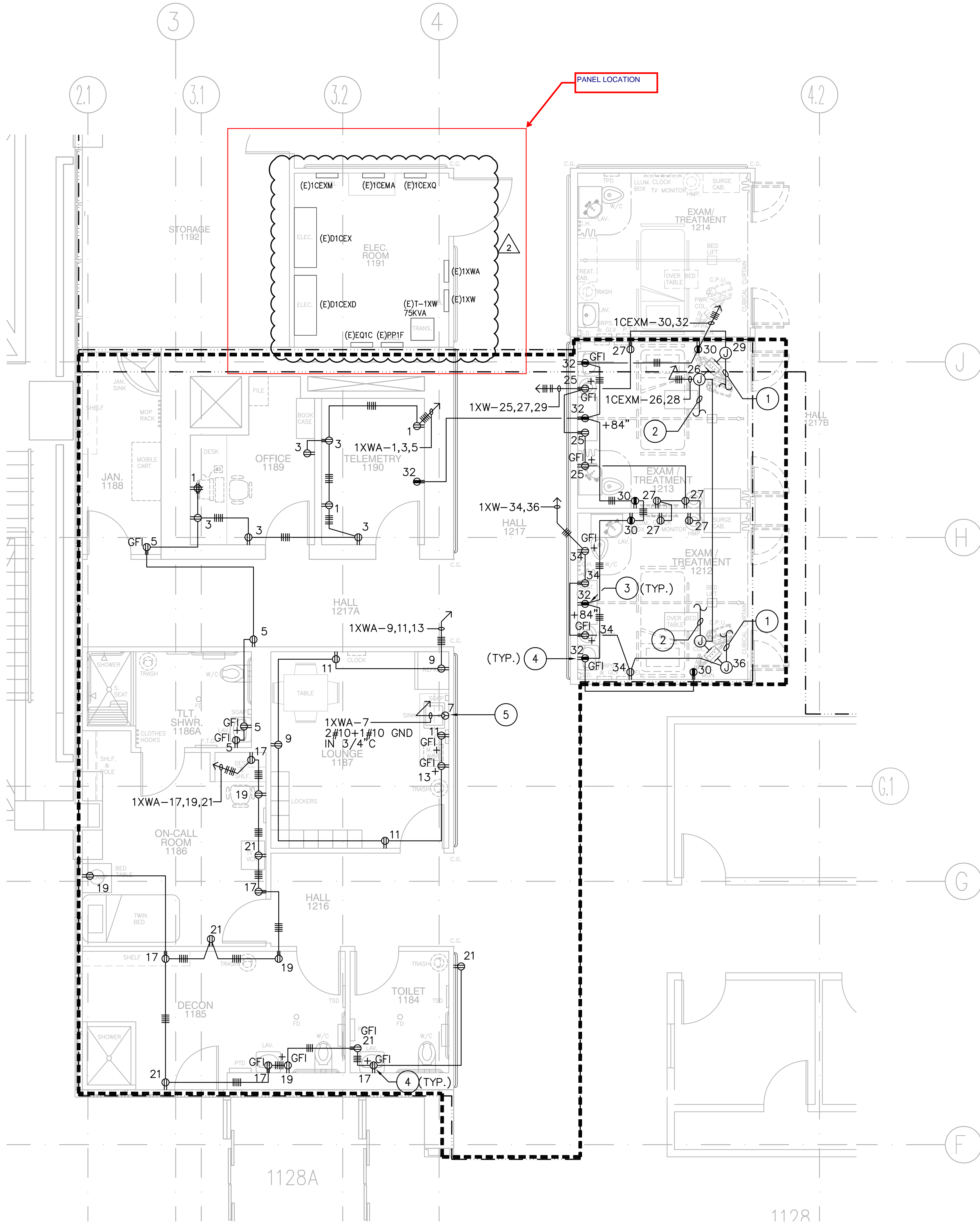
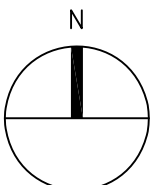


three inches = one foot
one and one-half inches = one foot
one inch = one foot
three-quarters inch = one foot
one-half inch = one foot
three-eighths inch = one foot
one-quarter inch = one foot
one-eighth inch = one foot



OSCAR GARCIA, RA
CHIEF OF PROJECTS
VA SAN DIEGO HEALTHCARE SYSTEM

[Signature]



SCALE: 1/4" = 1'-0"

LEGEND

DEMO = DASH EXIST = SOLID NEW = BOLD/FILLED
120V/20A DUPLEX OUTLET
GFI - GROUND FAULT INTERRUPT
+ INDICATES MOUNTING HEIGHT OTHER THAN 18" AFF. (REFER TO ARCHITECTURAL DRAWINGS)
120V/20A 4-PLEX OUTLET
120V/20A DUPLEX FLOOR OUTLET
JUNCTION BOX
SPECIAL OUTLET
120V/20A DUPLEX OUTLET CONNECT TO EMERGENCY CIRCUIT.
120V/20A 4-PLEX OUTLET CONNECT TO EMERGENCY CIRCUIT.
120V/20A DUPLEX FLOOR OUTLET CONNECT TO EMERGENCY CIRCUIT.
MOTOR, 20 HORSE POWER
MOTOR RATED DISCONNECT SWITCH
COMBINATION MAGNETIC MOTOR STARTER OVER-CURRENT PROTECTION AND SWITCH.
WALL SWITCH +48" A.F.F.
3-WAY SWITCH +48" A.F.F.
PANELBOARD, SURFACE MOUNT, 120/208V
ELECTRICAL PANEL FLUSH MOUNT
HOME-RUN TO PANEL 'A' CIRCUITS 3 AND 5
CROSS LINES ON CONDUIT RUNS INDICATE NUMBER OF #12 CURRENT CARRYING CONDUCTORS CONTAINED THEREIN. TWO #12 AND ONE #12 GROUND WIRE ARE INDICATED WHEN CROSS LINES ON ARE NOT SHOWN. NUMERALS ADJACENT TO CROSS LINES ON CONDUIT RUNS INDICATE SIZE OF CONDUCTORS IN LIEU OF #12. ALL CONDUITS SHALL CONTAIN ONE GROUND WIRE SIZED PER NEC TABLE 250-122, BUT NOT SMALLER THAN #12.
CEILING LIGHT FIXTURE, FLUORESCENT, OR INCANDESCENT. LOWER CASE LETTER INDICATES CONTROLLING SWITCH, NUMERAL INDICATES CIRCUIT. SHADED SYMBOL INDICATES FIXTURE CONNECTED TO EMERGENCY CIRCUIT.
FLUORESCENT LIGHT FIXTURE. LOWER CASE LETTER INDICATES CONTROLLING SWITCH, NUMERAL INDICATES CIRCUIT. UPPER CASE LETTER INDICATES LIGHTING FIXTURE TYPE.
FLUORESCENT STRIP FIXTURE. LOWER CASE LETTER INDICATES CONTROLLING SWITCH, NUMERAL INDICATES CIRCUIT. SHADED CIRCLE DENOTES FIXTURE CONNECTED TO EMERGENCY CIRCUIT.
BRACKET OR WALL MOUNTED LIGHT FIXTURE AND OUTLET, FLUORESCENT OR INCANDESCENT. LOWER CASE LETTER INDICATES CONTROLLING SWITCH, NUMERAL INDICATES CIRCUIT. SHADED CIRCLE DENOTES FIXTURE CONNECTED TO EMERGENCY CIRCUIT.
FLUORESCENT LIGHT FIXTURE, LOWER CASE LETTER INDICATES CONTROLLING SWITCH, NUMERAL INDICATES CIRCUIT. SHADED CIRCLE DENOTE FIXTURE CONNECTED TO EMERGENCY CIRCUIT.
ILLUMINATED EXIT LIGHT FIXTURE. SIDE, BACK, CEILING, OR PENDANT MOUNTED, SINGLE OR DOUBLE FACED AS NOTED BY SHADED ARC, WITH OR WITHOUT DIRECTIONAL ARROW AS NOTED ON THE DRAWINGS. NOT TO BE USED AS JUNCTION BOX OR "THROUGH-WIRE" DEVICE.
DRY TYPE TRANSFORMER.
MOLDED CASE CIRCUIT BREAKER. "AF" INDICATES AMPERE FRAME, "A" INDICATES AMPERE TRIP RATING AND NUMBER OF POLES AS INDICATED.
GROUND, "GRD".
"AMPS"
WEATHERPROOF, NEMA 3R.

T M A D
TAYLOR
& GAINES
100 South Anaheim Boulevard, Suite 150
Anaheim, California 92805
Phone: 714.490.5555 Fax: 714.490.5560
Project No. 2309.004.00

STRUCTURAL
MECHANICAL
ELECTRICAL
CIVIL

REGISTERED PROFESSIONAL ENGINEER
ELECTRICAL
No. 14189
State of California

gkkworks
architecture and construction services
1775 Hancock Street, Suite 150, San Diego, CA 92110
619.986.0215 : 619.814.1249 fax

GENERAL NOTES

1. REFER TO ARCHITECTURAL DETAILS AND ELEVATION DRAWINGS FOR EXACT LOCATION OF RECEPTACLES AND MOUNTING HEIGHT.
2. COORDINATE EXACT LOCATION OF EQUIPMENT CONNECTION OUTLETS WITH APPROVED MANUFACTURE'S SHOP DRAWINGS.
3. REFER TO ARCHITECTURAL AND MEDICAL EQUIPMENT DRAWINGS FOR EXACT LOCATION OF MEDICAL EQUIPMENT.
4. UPDATE ALL ELECTRIC PANEL INDEX CARDS TO REFLECT THE NEW ADDITIONS OR CHANGES.
5. "WARNING" ASBESTOS PRESENT IN INTERSTITIAL AREAS ON FIRE PROOFING ON STRUCTURAL STEEL TRUSSES AND OVERSPRAY ON 4" I-BEAMS, AND ON CONCRETE DECKS. CONTRACTOR TO WEAR RESPIRATOR AND PROTECTIVE COVERALLS IAW LOCAL, STATE & FEDERAL REGULATIONS.

SHEET NOTES

NO.	SPEC/REF	DESCRIPTION
1	260521 260533	CONNECT TO COLUMN NORMAL RECEPTACLES.
2	260521 260533	CONNECT TO COLUMN EMERGENCY RECEPTACLES.
3	260511 260533	RECEPTACLE FOR PATIENT LIFT UNIT. COORDINATE WITH ARCHITECT/VENDOR FOR EXACT MOUNTING LOCATION.
4	260511 260533	RECEPTACLE FOR PLUMBING FAUCET SENSOR (TYPICAL FOR ALL LAVATORY AND SINK). COORDINATE WITH PLUMBING DRAWINGS FOR EXACT LOCATION AND REQUIREMENTS.
5	260511 260533	RECEPTACLE FOR GARBAGE DISPOSAL. COORDINATE WITH PLUMBING CONTRACTOR FOR EXACT LOCATION AND REQUIREMENT.

Emergency Department Remodel Phase 2

Power Remodel Floor Plan (Phase 2)

REVISIONS:

DATE:

100% FINAL CONSTRUCTION DOCUMENTS 012612
FINAL CONSTRUCTION DOCUMENTS 022514

BUILDING NO. 1

Department of Veterans Affairs
3350 LaJolla Village Dr.
San Diego, California 92161

DATE: FEBRUARY 25, 2014
CHECKED: M.L.
DRAWN: T.N.
SCALE: AS NOTED
DRAWING No. SD-2297
1-E.5
PROJ. No. 664-14-127

KEY PLAN

1 POWER REMODEL FLOOR PLAN (PHASE 2)

R:\CAD\21CAD\ITGG_Projects\2009\2309.004.00 VA Emergency Department\MPE PH-21-E_05-P2.dwg Feb 27, 2014 05:36pm wedusada

FINAL CONSTRUCTION DOCUMENTS