Department of Veterans Affairs

**Department of
Veterans Affairs**

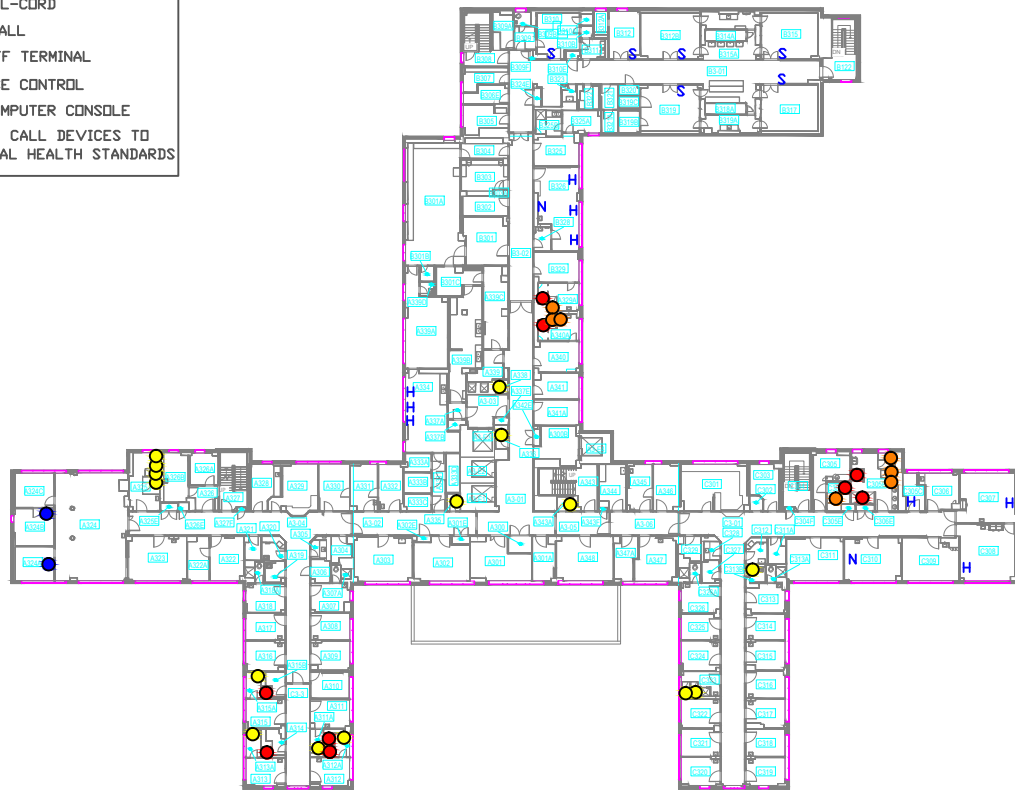


LEGEND

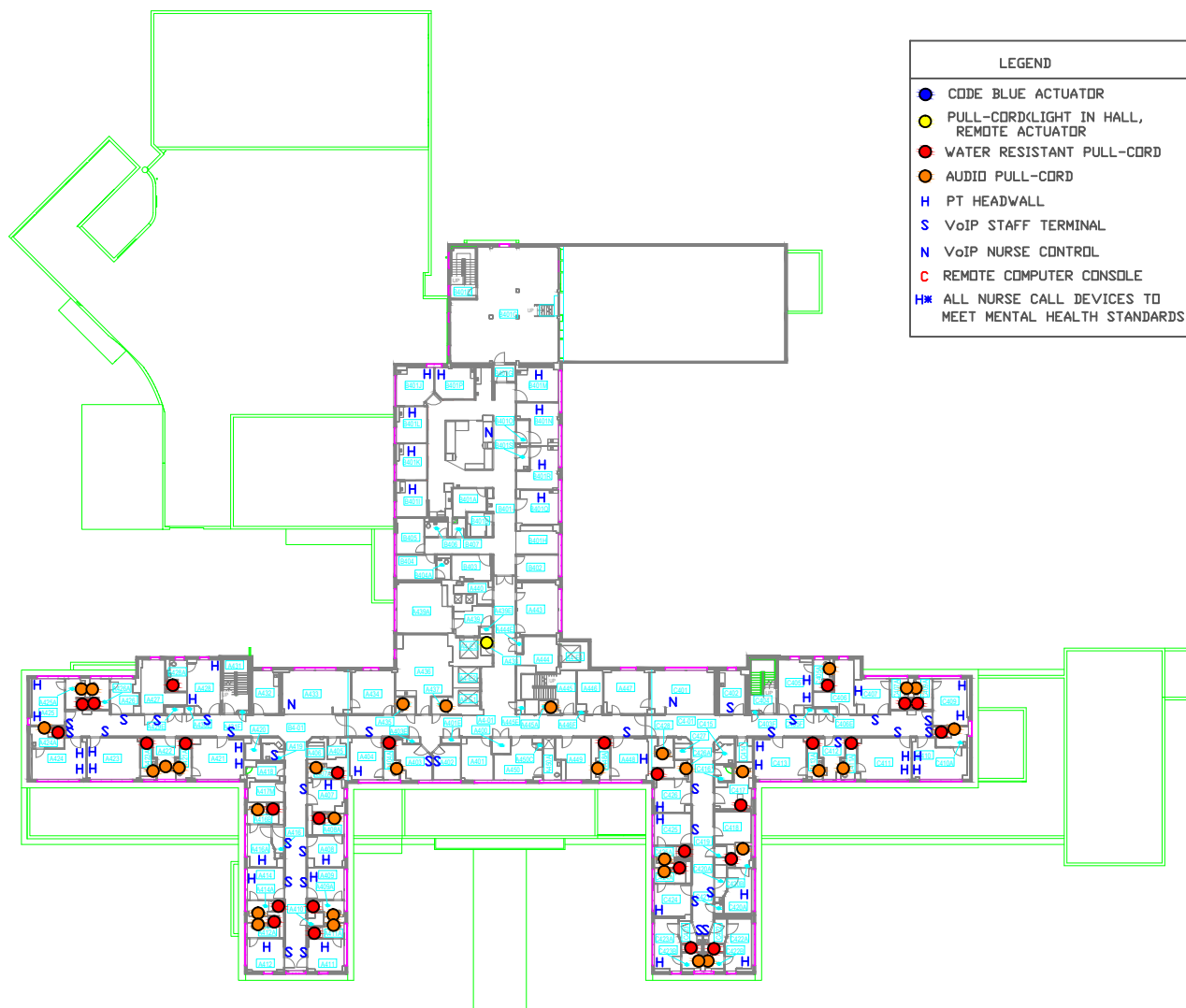
- CODE BLUE ACTUATOR
- PULL-CORD LIGHT IN HALL, REMOTE ACTUATOR
- WATER RESISTANT PULL-CORD
- AUDIO PULL-CORD
- H PT HEADWALL
- S VoIP STAFF TERMINAL
- N VoIP NURSE CONTROL
- C REMOTE COMPUTER CONSOLE
- HW ALL NURSE CALL DEVICES TO MEET MENTAL HEALTH STANDARDS

[AE]-LEVEL 2 - SPACE DRIVER AREA - BY ROOM			[AE]-LEVEL 2 - SPACE DRIVER AREA - BY ROOM		
NO	NAME	NET AREA	NO	NAME	NET AREA
CENTRALIZED STAFF LOCKERS/CHANGE/STOLES					
A004	MEN	155 SF	A2-03	NUCLEAR MED CORRIDOR	415 SF
A001	WOMEN	102 SF	A211	LAB OFFICE	102 SF
B001	WOMEN	66 SF	A214	SUPV/CHIEF NUCLEAR MEDICATION SAFETY OFFICER	131 SF
B01P	CHARGE	20 SF	A216	INJECTION ROOM	204 SF
B002	MEN	81 SF	A218	NOT ROOM	15 SF
B022	HAIRING PROCESSING	97 SF	A219	WAF. RM	82 SF
B028	STAFF BREAK ROOM	202 SF	A218B	STORAGE	81 SF
C008	STORAGE & LOCKERS	345 SF	A219	STORAGE ROOM	124 SF
C008A	STORAGE	45 SF	A200	ADMINISTRATIVE OFFICER	126 SF
C008B	STORAGE	35 SF	A219A	READING ROOM	216 SF
C008C	STORAGE	120 SF			1949 SF
COMMON SPACE					
A2-01	CORRIDOR, ELEVATOR LOBBY	631 SF	PATHOLOGY & LABORATORY MED. PROGRAM		
A2-02	CORRIDOR	234 SF	A202	CONFERENCE ROOM	201 SF
A2-03	CORRIDOR	959 SF	A202A	PH. LAB. SERVICE/ADMINISTRATION	135 SF
A2-04	CORRIDOR	304 SF	A203	PH. LAB. SERVICE/TECHNICAL DIRECTOR	219 SF
A2-05	ELEVATOR	103 SF	A212	PATHOLOGY	229 SF
A2-06	ELEVATOR	103 SF	A221	IV STORAGE	308 SF
A2-07	ELEVATOR	118 SF	A222	BLOOD COLLECTION	1686 SF
A208	ELECTRICAL CLOSET	16 SF	A209	LAB COORDINATOR	131 SF
A208A	ELECTRICAL CLOSET	16 SF	A203	CHIEF TECHNOLOGIST	133 SF
A208B	ELECTRICAL CLOSET	16 SF	C201	TEST TABLE	38 SF
A208C	ELECTRICAL CLOSET	16 SF	C202	BLOOD BANK	311 SF
A208D	ELECTRICAL CLOSET	16 SF	C204	CONFERENCE ROOM	308 SF
A208E	ELECTRICAL CLOSET	16 SF	C206	METALLOID LABORATORY	129 SF
A208F	ELECTRICAL CLOSET	16 SF	C207	METALLOID LABORATORY	355 SF
A208G	ELECTRICAL CLOSET	16 SF	C208	STERILIZER	27 SF
A208H	ELECTRICAL CLOSET	16 SF	C210	INCUBATORS	185 SF
A208I	ELECTRICAL CLOSET	16 SF	C210A	LAB ROOM	83 SF
A208J	ELECTRICAL CLOSET	16 SF	C211	MICROBIOLOGY	412 SF
A208K	ELECTRICAL CLOSET	16 SF	C212	ELEC. CLOSET	13 SF
A208L	ELECTRICAL CLOSET	16 SF	C213	MICROBIOLOGY	148 SF
A208M	ELECTRICAL CLOSET	16 SF	C214	STAFF ONLY	46 SF
A208N	ELECTRICAL CLOSET	16 SF	C214A	MEDICAL ROOM	262 SF
A208O	ELECTRICAL CLOSET	16 SF	C215	WAF. LABORATORY	2414 SF
A208P	ELECTRICAL CLOSET	16 SF			768 SF
A208Q	ELECTRICAL CLOSET	16 SF	RADIOLOGY		
A208R	ELECTRICAL CLOSET	16 SF	A209	STAFF RADIOLOGIST	145 SF
A208S	ELECTRICAL CLOSET	16 SF	A210	RADIOLOGY CORRIDOR	179 SF
A208T	ELECTRICAL CLOSET	16 SF	A211	CORRIDOR	775 SF
A208U	ELECTRICAL CLOSET	16 SF	A212	STAFF RADIOLOGIST	109 SF
A208V	ELECTRICAL CLOSET	16 SF	A213	STAFF RADIOLOGIST	188 SF
A208W	ELECTRICAL CLOSET	16 SF	A214	STAFF RADIOLOGIST	151 SF
A208X	ELECTRICAL CLOSET	16 SF	A215	PPE CLOSET	3 SF
A208Y	ELECTRICAL CLOSET	16 SF	A216	COMMUNICATION ROOM	168 SF
A208Z	ELECTRICAL CLOSET	16 SF	A217	X-RAY ROOM	313 SF
A209	STAIR 1	183 SF	A218	C-TR	43 SF
A209A	STAIR 1	183 SF	A219	STAFF ONLY	43 SF
A209B	STAIR 1	183 SF	A220	X-RAY ROOM	269 SF
A209C	STAIR 1	183 SF	A221	C-TR	31 SF
A209D	STAIR 1	183 SF	A222	FLUOROSCOPY ROOM	341 SF
A209E	STAIR 1	183 SF	A223	RESTROOM	32 SF
A209F	STAIR 1	183 SF	A224	C-TR	26 SF
A209G	STAIR 1	183 SF	A225	ULTRASOUND 1	105 SF
A209H	STAIR 1	183 SF	A226	BONE DENSITY	181 SF
A209I	STAIR 1	183 SF	A227	RESTROOM	46 SF
A209J	STAIR 1	183 SF	A228	STORAGE	45 SF
A209K	STAIR 1	183 SF	A230	ULTRASOUND 2	251 SF
A209L	STAIR 1	183 SF	A231	RADIOLOGY OFFICE	135 SF
A209M	STAIR 1	183 SF	A232	ELECTRICAL CLOSET	20 SF
A209N	STAIR 1	183 SF	A233	RADIOLOGY RECEPTION	367 SF
A209O	STAIR 1	183 SF	A234	CHIEF TECHNOLOGIST	176 SF
A209P	STAIR 1	183 SF	A235	STORAGE	384 SF
A209Q	STAIR 1	183 SF	A236	CT CONTROL ROOM	86 SF
A209R	STAIR 1	183 SF	A237	COMPUTER ROOM	75 SF
A209S	STAIR 1	183 SF	A238	CHANGING	34 SF
A209T	STAIR 1	183 SF	A239	CT CONTROL ROOM	86 SF
A209U	STAIR 1	183 SF	A240	COMPUTER ROOM	75 SF
A209V	STAIR 1	183 SF	A241	AUTHORIZED PERSONNEL ONLY	100 SF
A209W	STAIR 1	183 SF	A242	EQUIPMENT	89 SF
A209X	STAIR 1	183 SF			3044 SF
A209Y	STAIR 1	183 SF			
A209Z	STAIR 1	183 SF			
A210	STAIR 2	207 SF			
A211	STAIR 2	207 SF			
A212	STAIR 2	207 SF			
A213	STAIR 2	207 SF			
A214	STAIR 2	207 SF			
A215	STAIR 2	207 SF			
A216	STAIR 2	207 SF			
A217	STAIR 2	207 SF			
A218	STAIR 2	207 SF			
A219	STAIR 2	207 SF			
A220	STAIR 2	207 SF			
A221	STAIR 2	207 SF			
A222	STAIR 2	207 SF			
A223	STAIR 2	207 SF			
A224	STAIR 2	207 SF			
A225	STAIR 2	207 SF			
A226	STAIR 2	207 SF			
A227	STAIR 2	207 SF			
A228	STAIR 2	207 SF			
A229	STAIR 2	207 SF			
A230	STAIR 2	207 SF			
A231	STAIR 2	207 SF			
A232	STAIR 2	207 SF			
A233	STAIR 2	207 SF			
A234	STAIR 2	207 SF			
A235	STAIR 2	207 SF			
A236	STAIR 2	207 SF			
A237	STAIR 2	207 SF			
A238	STAIR 2	207 SF			
A239	STAIR 2	207 SF			
A240	STAIR 2	207 SF			
A241	STAIR 2	207 SF			
A242	STAIR 2	207 SF			
A243	STAIR 2	207 SF			
A244	STAIR 2	207 SF			
A245	STAIR 2	207 SF			
A246	STAIR 2	207 SF			
A247	STAIR 2	207 SF			
A248	STAIR 2	207 SF			
A249	STAIR 2	207 SF			
A250	STAIR 2	207 SF			
A251	STAIR 2	207 SF			
A252	STAIR 2	207 SF			
A253	STAIR 2	207 SF			
A254	STAIR 2	207 SF			
A255	STAIR 2	207 SF			
A256	STAIR 2	207 SF			
A257	STAIR 2	207 SF			
A258	STAIR 2	207 SF			
A259	STAIR 2	207 SF			
A260	STAIR 2	207 SF			
A261	STAIR 2	207 SF			
A262	STAIR 2	207 SF			
A263	STAIR 2	207 SF			
A264	STAIR 2	207 SF			
A265	STAIR 2	207 SF			
A266	STAIR 2	207 SF			
A267	STAIR 2	207 SF			
A268	STAIR 2	207 SF			
A269	STAIR 2	207 SF			
A270	STAIR 2	207 SF			
A271	STAIR 2	207 SF			
A272	STAIR 2	207 SF			
A273	STAIR 2	207 SF			
A274	STAIR 2	207 SF			
A275	STAIR 2	207 SF			
A276	STAIR 2	207 SF			
A277	STAIR 2	207 SF			
A278	STAIR 2	207 SF			
A279	STAIR 2	207 SF			
A280	STAIR 2	207 SF			
A281	STAIR 2	207 SF			
A282	STAIR 2	207 SF			
A283	STAIR 2	207 SF			
A284	STAIR 2	207 SF			
A285	STAIR 2	207 SF			
A286	STAIR 2	207 SF			
A287	STAIR 2	207 SF			
A288	STAIR 2	207 SF			
A289	STAIR 2	207 SF			
A290	STAIR 2	207 SF			
A291	STAIR 2	207 SF			
A292	STAIR 2	207 SF			
A293	STAIR 2	207 SF			
A294	STAIR 2	207 SF			
A295	STAIR 2	207 SF			
A296	STAIR 2	207 SF			
A297	STAIR 2	207 SF			
A298	STAIR 2	207 SF			
A299	STAIR 2	207 SF			
A300	STAIR 2	207 SF			
A301	STAIR 2	207 SF			
A302	STAIR 2	207 SF			
A303	STAIR 2	207 SF			
A304	STAIR 2	207 SF			
A305	STAIR 2	207 SF			
A306	STAIR 2	207 SF			
A307	STAIR 2	207 SF			
A308	STAIR 2	207 SF			
A309	STAIR 2	207 SF			
A310	STAIR 2	207 SF			
A311	STAIR 2	207 SF			
A312	STAIR 2	207 SF			
A313	STAIR 2	207 SF			
A314	STAIR 2	207 SF			
A315	STAIR 2	207 SF			
A316	STAIR 2	207 SF			
A317	STAIR 2	207 SF			
A318	STAIR 2	207 SF			
A319	STAIR 2	207 SF			
A320	STAIR 2	207 SF			
A321	STAIR 2	207 SF			
A322	STAIR 2	207 SF			
A323	STAIR 2	207 SF			
A324	STAIR 2	207 SF			
A325	STAIR 2	207 SF			
A326	STAIR 2	207 SF			
A327	STAIR 2	207 SF			
A328	STAIR 2	207 SF			
A329	STAIR 2	207 SF			
A330	STAIR 2	207 SF			
A331	STAIR 2	207 SF			
A332	STAIR 2	207 SF			
A333	STAIR 2	207 SF			
A334	STAIR 2	207 SF			
A335	STAIR 2	207 SF			
A336	STAIR 2	207 SF			
A337	STAIR 2	207 SF			
A338	STAIR 2	207 SF			
A339	STAIR 2	207 SF			
A340	STAIR 2	207 SF			
A341	STAIR 2	207 SF			
A342	STAIR 2	207 SF			
A343	STAIR 2	207 SF			
A344	STAIR 2	207 SF			
A345	STAIR 2	207 SF			
A346	STAIR 2	207 SF			
A347	STAIR 2	207 SF			
A348	STAIR 2	207 SF			
A349	STAIR 2	207 SF			
A350	STAIR 2	207 SF			
A351	STAIR 2	207 SF			
A352	STAIR 2	207 SF			
A353	STAIR 2	207 SF			
A354	STAIR 2	207 SF			
A355	STAIR 2	207 SF			
A356	STAIR 2	207 SF			
A357	STAIR 2	207 SF			
A358	STAIR 2	207 SF			
A359	STAIR 2	207 SF			
A360	STAIR 2	207 SF			
A361	STAIR 2	207 SF			
A362	STAIR 2	207 SF			
A363	STAIR 2	207 SF			
A364	STAIR 2	207 SF			
A365	STAIR 2	207 SF			
A366	STAIR 2	207 SF			
A367	STAIR 2	207 SF			
A368	STAIR 2	207 SF			
A369	STAIR 2	207 SF			
A370	STAIR 2	207 SF			
A371	STAIR 2	207 SF			
A372	STAIR 2	207 SF			
A373	STAIR 2	207 SF			
A374	STAIR 2	207 SF			
A375	STAIR 2	207 SF			
A376	STAIR 2	207 SF			
A377	STAIR 2	207 SF			
A378	STAIR 2	207 SF			
A379	STAIR 2	207 SF			
A380	STAIR 2	207 SF			
A381	STAIR 2	207 SF			
A382	STAIR 2	207 SF			
A383	STAIR 2	207 SF			
A384	STAIR 2	207 SF			
A385	STAIR 2	207 SF			
A386	STAIR 2	207 SF			
A387	STAIR 2	207 SF			
A388	STAIR 2	207 SF			
A389	STAIR 2	207 SF			
A390	STAIR 2	207 SF			
A391	STAIR 2	207 SF			
A392	STAIR 2	207 SF			
A393	STAIR 2	207 SF			

[AE]-LEVEL 2 - SPACE DRIVER AREA - BY ROOM			[AE]-LEVEL 2 - SPACE DRIVER AREA - BY ROOM		
NO	NAME	NET AREA	NO	NAME	NET AREA
CENTRALIZED STAFF LOCKERS/CHANGE/STOLES					
A004	MEN	155 SF	A2-03	NUCLEAR MED CORRIDOR	415 SF
A001	WOMEN	102 SF	A211	LAB OFFICE	102 SF
B001	WOMEN	66 SF	A214	SUPV/CHIEF NUCLEAR MEDICATION SAFETY OFFICER	13



**Department of
Veterans Affairs**



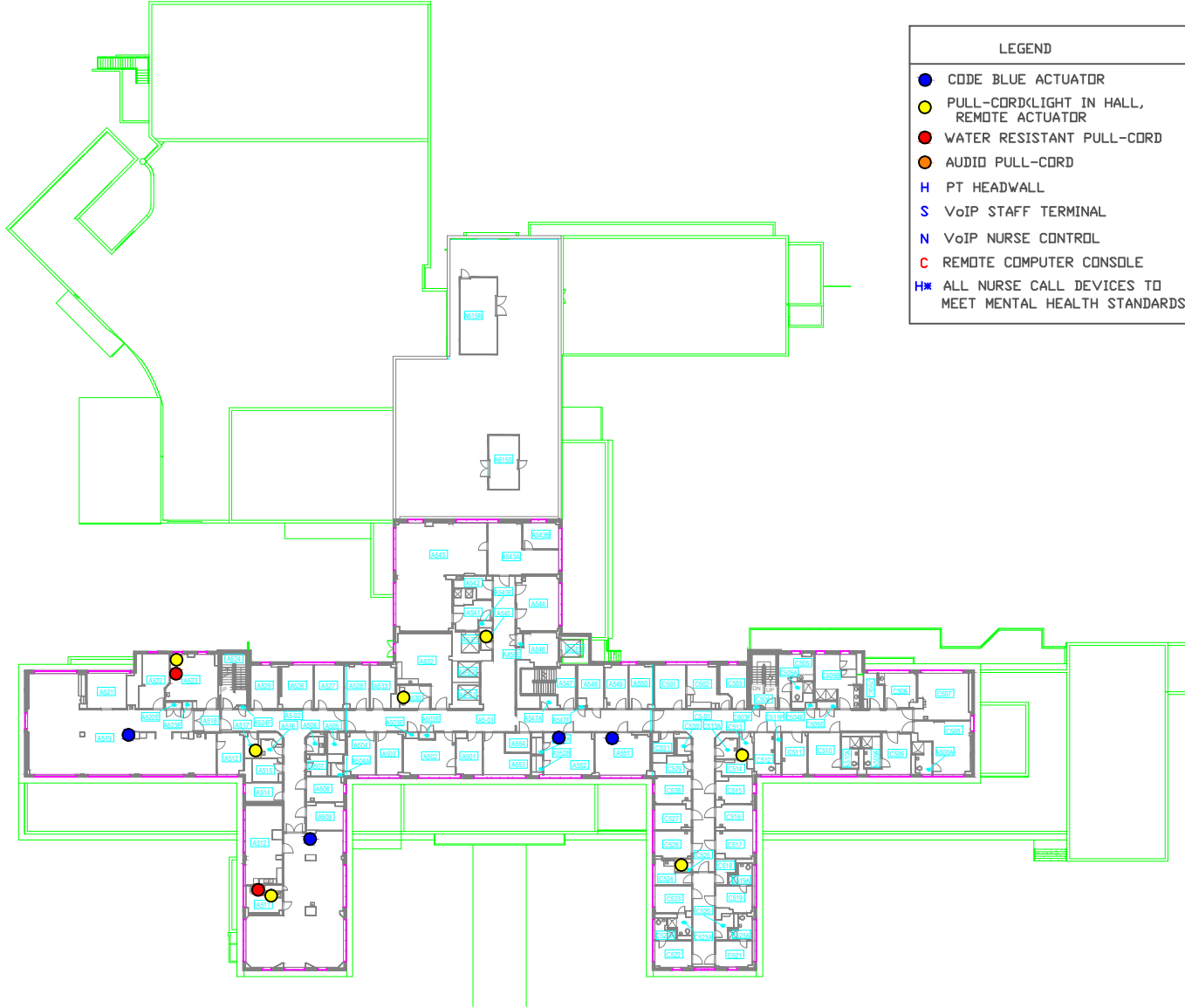
LEGEND

- CODE BLUE ACTUATOR
- PULL-CORD/LIGHT IN HALL, REMOTE ACTUATOR
- WATER RESISTANT PULL-CORD
- AUDIO PULL-CORD
- H PT HEADWALL
- S VoIP STAFF TERMINAL
- N VoIP NURSE CONTROL
- C REMOTE COMPUTER CONSOLE
- H* ALL NURSE CALL DEVICES TO MEET MENTAL HEALTH STANDARDS

AE-LEVEL 4 SPACE DRIVER AREA - BY ROOM			AE-LEVEL 4 SPACE DRIVER AREA - BY ROOM		
NO	NAME	NET AREA	NO	NAME	NET AREA
AE01	WAITING ROOM	280 SF	AE101	STAFF LOCKER ROOM	48 SF
AE02	CU AREA	940 SF	AE102	SOILED LINEN	47 SF
AE03	STORAGE	114 SF	AE103	HOUSEKEEPING CLOSET	30 SF
AE04	SOILED UTILITY	75 SF	AE104	HYDROTHERAPY	160 SF
AE05	RESTROOM	49 SF	AE105	MEDIA RM	186 SF
AE06	ICU ALCOVE	160 SF	AE106	RESTROOM	57 SF
AE07	CURSOR MED	140 SF	AE107	PATIENT ROOM	150 SF
AE08	CU-1	180 SF	AE108	VIEWING	85 SF
AE09	POL-2	140 SF	AE109	RESTROOM	57 SF
AE10	CU-3	140 SF	AE110	VIEWING	85 SF
AE11	CU-4	180 SF	AE111	PATIENT ROOM	150 SF
AE12	CU-5	140 SF	AE112	VIEWING	85 SF
AE13	CU-6	140 SF	AE113	PATIENT ROOM	150 SF
AE14	CU-7	140 SF	AE114	VIEWING	85 SF
AE15	CU-8	140 SF	AE115	PATIENT ROOM	150 SF
AE16	CU-9	140 SF	AE116	VIEWING	85 SF
AE17	CU-10	140 SF	AE117	PATIENT ROOM	150 SF
AE18	CU-11	140 SF	AE118	VIEWING	85 SF
AE19	CU-12	140 SF	AE119	PATIENT ROOM	150 SF
AE20	CU-13	140 SF	AE120	VIEWING	85 SF
AE21	CU-14	140 SF	AE121	PATIENT ROOM	150 SF
AE22	CU-15	140 SF	AE122	VIEWING	85 SF
AE23	CU-16	140 SF	AE123	PATIENT ROOM	150 SF
AE24	CU-17	140 SF	AE124	VIEWING	85 SF
AE25	CU-18	140 SF	AE125	PATIENT ROOM	150 SF
AE26	CU-19	140 SF	AE126	VIEWING	85 SF
AE27	CU-20	140 SF	AE127	PATIENT ROOM	150 SF
AE28	CU-21	140 SF	AE128	VIEWING	85 SF
AE29	CU-22	140 SF	AE129	PATIENT ROOM	150 SF
AE30	CU-23	140 SF	AE130	VIEWING	85 SF
AE31	CU-24	140 SF	AE131	PATIENT ROOM	150 SF
AE32	CU-25	140 SF	AE132	VIEWING	85 SF
AE33	CU-26	140 SF	AE133	PATIENT ROOM	150 SF
AE34	CU-27	140 SF	AE134	VIEWING	85 SF
AE35	CU-28	140 SF	AE135	PATIENT ROOM	150 SF
AE36	CU-29	140 SF	AE136	VIEWING	85 SF
AE37	CU-30	140 SF	AE137	PATIENT ROOM	150 SF
AE38	CU-31	140 SF	AE138	VIEWING	85 SF
AE39	CU-32	140 SF	AE139	PATIENT ROOM	150 SF
AE40	CU-33	140 SF	AE140	VIEWING	85 SF
AE41	CU-34	140 SF	AE141	PATIENT ROOM	150 SF
AE42	CU-35	140 SF	AE142	VIEWING	85 SF
AE43	CU-36	140 SF	AE143	PATIENT ROOM	150 SF
AE44	CU-37	140 SF	AE144	VIEWING	85 SF
AE45	CU-38	140 SF	AE145	PATIENT ROOM	150 SF
AE46	CU-39	140 SF	AE146	VIEWING	85 SF
AE47	CU-40	140 SF	AE147	PATIENT ROOM	150 SF
AE48	CU-41	140 SF	AE148	VIEWING	85 SF
AE49	CU-42	140 SF	AE149	PATIENT ROOM	150 SF
AE50	CU-43	140 SF	AE150	VIEWING	85 SF
AE51	CU-44	140 SF	AE151	PATIENT ROOM	150 SF
AE52	CU-45	140 SF	AE152	VIEWING	85 SF
AE53	CU-46	140 SF	AE153	PATIENT ROOM	150 SF
AE54	CU-47	140 SF	AE154	VIEWING	85 SF
AE55	CU-48	140 SF	AE155	PATIENT ROOM	150 SF
AE56	CU-49	140 SF	AE156	VIEWING	85 SF
AE57	CU-50	140 SF	AE157	PATIENT ROOM	150 SF
AE58	CU-51	140 SF	AE158	VIEWING	85 SF
AE59	CU-52	140 SF	AE159	PATIENT ROOM	150 SF
AE60	CU-53	140 SF	AE160	VIEWING	85 SF
AE61	CU-54	140 SF	AE161	PATIENT ROOM	150 SF
AE62	CU-55	140 SF	AE162	VIEWING	85 SF
AE63	CU-56	140 SF	AE163	PATIENT ROOM	150 SF
AE64	CU-57	140 SF	AE164	VIEWING	85 SF
AE65	CU-58	140 SF	AE165	PATIENT ROOM	150 SF
AE66	CU-59	140 SF	AE166	VIEWING	85 SF
AE67	CU-60	140 SF	AE167	PATIENT ROOM	150 SF
AE68	CU-61	140 SF	AE168	VIEWING	85 SF
AE69	CU-62	140 SF	AE169	PATIENT ROOM	150 SF
AE70	CU-63	140 SF	AE170	VIEWING	85 SF
AE71	CU-64	140 SF	AE171	PATIENT ROOM	150 SF
AE72	CU-65	140 SF	AE172	VIEWING	85 SF
AE73	CU-66	140 SF	AE173	PATIENT ROOM	150 SF
AE74	CU-67	140 SF	AE174	VIEWING	85 SF
AE75	CU-68	140 SF	AE175	PATIENT ROOM	150 SF
AE76	CU-69	140 SF	AE176	VIEWING	85 SF
AE77	CU-70	140 SF	AE177	PATIENT ROOM	150 SF
AE78	CU-71	140 SF	AE178	VIEWING	85 SF
AE79	CU-72	140 SF	AE179	PATIENT ROOM	150 SF
AE80	CU-73	140 SF	AE180	VIEWING	85 SF
AE81	CU-74	140 SF	AE181	PATIENT ROOM	150 SF
AE82	CU-75	140 SF	AE182	VIEWING	85 SF
AE83	CU-76	140 SF	AE183	PATIENT ROOM	150 SF
AE84	CU-77	140 SF	AE184	VIEWING	85 SF
AE85	CU-78	140 SF	AE185	PATIENT ROOM	150 SF
AE86	CU-79	140 SF	AE186	VIEWING	85 SF
AE87	CU-80	140 SF	AE187	PATIENT ROOM	150 SF
AE88	CU-81	140 SF	AE188	VIEWING	85 SF
AE89	CU-82	140 SF	AE189	PATIENT ROOM	150 SF
AE90	CU-83	140 SF	AE190	VIEWING	85 SF
AE91	CU-84	140 SF	AE191	PATIENT ROOM	150 SF
AE92	CU-85	140 SF	AE192	VIEWING	85 SF
AE93	CU-86	140 SF	AE193	PATIENT ROOM	150 SF
AE94	CU-87	140 SF	AE194	VIEWING	85 SF
AE95	CU-88	140 SF	AE195	PATIENT ROOM	150 SF
AE96	CU-89	140 SF	AE196	VIEWING	85 SF
AE97	CU-90	140 SF	AE197	PATIENT ROOM	150 SF
AE98	CU-91	140 SF	AE198	VIEWING	85 SF
AE99	CU-92	140 SF	AE199	PATIENT ROOM	150 SF
AE00	CU-93	140 SF	AE200	VIEWING	85 SF

LEVEL 4 - OVERALL PLAN
1/16" = 1'-0"

<table><tr><td>No.</td><td>Description</td><td>Date</td></tr><tr><td>100%</td><td>SUBMITTAL</td><td>01/21/2014</td></tr></table> <p>ARCHITECTS/ENGINEERS: Burns & McDonnell SINCE 1899 4400 West Parkway Lawrence, KS 66044 Phone: (781) 335-5949 Fax: (781) 335-5951 http://burnsmcdonnell.com</p>	No.	Description	Date	100%	SUBMITTAL	01/21/2014	<p>Building Key Plan:</p>	<p>FACILITIES MANAGEMENT FLOOR PLAN DRAWINGS</p> <p>- FOR REFERENCE ONLY - NOT FOR CONSTRUCTION</p>		<p>VA EASTERN KANSAS HEALTH CARE SYSTEM</p> <p>Dwight D. Eisenhower VA Medical Center, Leavenworth Colmery-O'Neil VA Medical Center, Topeka</p>	<p>Project Title: LEVEL 4 - OVERALL PLAN</p> <p>Date: 1/16" = 1'-0"</p> <p>Approved:</p>	<p>Project Title: VA RTLSHOSPITAL</p> <p>Building Number: 1</p> <p>Checked By: AS</p> <p>Drawn By: TC</p> <p>Location: Colmery-O'Neil VA Medical Center, Topeka</p>	<p>Date: 01/21/2014</p> <p>Project No. 74344</p> <p>Drawing No. AE141</p> <p>Page 01</p>	<p>Department of Veterans Affairs</p>
No.	Description	Date												
100%	SUBMITTAL	01/21/2014												



LEGEND	
●	CODE BLUE ACTUATOR
●	PULL-CORD/LIGHT IN HALL, REMOTE ACTUATOR
●	WATER RESISTANT PULL-CORD
●	AUDIO PULL-CORD
S	PT HEADWALL
H	VoIP NURSE TERMINAL
N	VoIP NURSE CONTROL
C	REMOTE COMPUTER CONSOLE
HM	ALL NURSE CALL DEVICES TO MEET MENTAL HEALTH STANDARDS

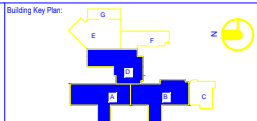
AE-LEVEL 5 SPACE DRIVER AREA - BYROOM		
NO	NAME	NETAREA
ACS-PRIMARY CARE		
AS18A	RESTROOM	74 SF
AS18B	RESTROOM	74 SF
AS18C	PATIENT RESTROOM	74 SF
CS206	STORAGE-OLD RESTROOM	262 SF
CS206C	STAFF BREAK ROOM	78 SF
CS207	EXAM ROOM	321 SF
CS208	EXAM ROOM	317 SF
CS209	EXAM ROOM	375 SF
CS210	WAITING ROOM	397 SF
CS211	STAFF BREAK ROOM	138 SF
ACS-SPECIALTY CARE		
AS19	RESTROOM	85 SF
AS19C	ISO EXAM ROOM	441 SF
AS19D		336 SF
AUDIOLOGY PROGRAM		
AS19	SPEECH CLINIC	142 SF
AS19C		142 SF
COMMON SPACE		
AS401	CORRIDOR, ELEVATOR LOBBY	1388 SF
AS402	CORRIDOR	860 SF
AS403	ELEVATOR	96 SF
AS404	ELEVATOR	79 SF
AS405	ELEVATOR	138 SF
AS406	ELEVATOR	108 SF
AS407	ELEC CLOSET	12 SF
AS408	ELEC CLOSET	12 SF
AS409	ELEC CLOSET	9 SF
AS410	STAR 1	183 SF
AS411	STAR CLOSET	24 SF
AS412	STAR RESTROOM	26 SF
AS413	ELEC CLOSET	13 SF
AS414	SERVICE ELEVATOR	126 SF
AS415	FOURWAY	77 SF
AS416	SOUTH ELEVATOR LOBBY	158 SF
AS417	STAR 4	227 SF
AS418	STORAGE	31 SF
AS419	STAR CLOSET	12 SF
AS420	ROOF MECHANICAL	372 SF
AS421	ROOF MECHANICAL	214 SF
CS211	CORRIDOR	1177 SF
CS212	ELEC CLOSET	12 SF
CS213	STAR 5	362 SF
CS214	ELEC CLOSET	8 SF
CS215	ELEC CLOSET	13 SF
CS216	CHARGE	23 SF
CS217	MECHANICAL ROOM	52 SF
		5380 SF
DIRECTOR'S SUITE		
AS20	WELCOME SERVICE STAFF	136 SF
AS20C		136 SF
ECG/NEUROLOGY PROGRAM		
AS21	ENG LAB	263 SF
AS22	ENG LAB	263 SF
AS23A	CLOSET	24 SF
AS23B	CLOSET	24 SF
		634 SF
EYE CLINIC		
AS45	PATRIOT VISION	138 SF
AS45C		138 SF
INFORMATION RESOURCE MGMT		
AS54	IT CLOSET	64 SF
		64 SF
MEDICAL ADMINISTRATION SERVICE		
CS26	STAFF RESTROOM	24 SF
CS26C	CLINICAL PSYCHOLOGIST	132 SF
CS27	NURSE PRACTITIONER	118 SF
CS28	PHYSICIAN ASSISTANT	127 SF
CS29	INDEPENDENT LIVING SUPPLIES	64 SF
CS30	KITCHEN	52 SF
CS31	COPY ROOM	85 SF
		666 SF
MEDICAL SERVICE ADMINISTRATION		
AS1E	COPY ROOM A	138 SF
AS1F	WAITING ROOM	260 SF
AS24	STAFF PHYSICIAN	164 SF
AS24A	CLOSET	24 SF
AS25	ISO-PNA-SWS	154 SF
AS26	STAFF PHYSICIAN	186 SF
AS27	CHIEF PNA	175 SF
AS28	STAFF PHYSICIAN	140 SF
AS30	STAFF PHYSICIAN	134 SF
AS31	PMAF SERVICE	192 SF
CS31	COMPENSATION & PENSION	182 SF
CS32	COMPENSATION & PENSION	182 SF
CS33	OCCUPATIONAL HEALTH	133 SF
CS34	NURSE PRACTITIONER	162 SF
CS35A	RESTROOM	74 SF
CS35B	RESTROOM	122 SF
CS35C	RESTROOM STAFF ONLY	46 SF
CS35D	SOLID UTILITY	52 SF
CS35E	INDEPENDENT LIVING SUPPLIES	64 SF
CS35F	NURSE PRACTITIONER	118 SF
CS35G	STAFF PHYSICIAN	118 SF
CS35H	OCCUPATIONAL HEALTH	128 SF
		2507 SF

AE-LEVEL 5 SPACE DRIVER AREA - BYROOM		
NO	NAME	NETAREA
NURSING SERVICE ADMINISTRATION		
CS16	DERMATOLOGY CLINIC	150 SF
CS17	DERMATOLOGY CLINIC	150 SF
NUTRITION/FOOD SERVICE		
AS49	DIETITIAN	129 SF
CS18	DIETITIAN	129 SF
ON-CALL PROGRAM		
CS42C	TOILET ROOM	277 SF
CS19	EXAM ROOM	321 SF
CS19A	RESTROOM	83 SF
CS20	HOUSEKEEPING CLOSET	48 SF
CS21	ON-CALL ROOM	129 SF
CS21A	RESTROOM	55 SF
CS21B	ON-CALL ROOM	129 SF
CS22A	RESTROOM	74 SF
CS23	SLEEPING ROOM	138 SF
CS23A	RESTROOM	55 SF
CS24	KITCHEN	80 SF
		1126 SF
PROSTHETICS PROGRAM		
AS43	PROSTHETICS SUPPLY ROOM	1543 SF
AS43A	PROSTHETICS & SENSORY AID SERVICE	368 SF
AS43B	PROSTHETIC REPRESENTATIVE	124 SF
AS44	PROSTHETICS SERVICE	301 SF
		1636 SF
REHAB MEDICINE PROGRAM		
AS50	STORAGE	43 SF
AS50C	STORAGE	38 SF
AS50D	STORAGE	33 SF
AS50E	EXAM ROOM 1	129 SF
AS50F	EXAM ROOM 2	129 SF
AS50G	OT CLINIC	1307 SF
AS50H	ADL TRAINING ROOM	116 SF
AS50I	CHARGE	14 SF
AS50J	ADL KITCHEN	372 SF
AS50K	PATIENT EXAM ROOM	144 SF
AS50L	CHIEF PHYSICAL THERAPY	82 SF
AS50M	OT SUPERVISOR	87 SF
AS50N	SOILED UTILITY	48 SF
AS50O	RESTROOM STAFF ONLY	46 SF
AS50P	PHYSICAL THERAPY CLINIC/VESTIBULE	74 SF
AS50Q	PHYSICAL THERAPY CLINIC	1825 SF
AS50R	PHYSICAL THERAPISTS	187 SF
AS50S	STORAGE	164 SF
AS50T	ELEC CLOSET	14 SF
AS50U	HYDROTHERAPY	317 SF
AS50V	ELEC CLOSET	8 SF
		3207 SF
		20711 SF

LEVEL 5 - OVERALL PLAN
1/16" = 1'-0"

No.	Description	Date
0	100% SUBMITTAL	01/21/2014

ARCHITECTS/ENGINEERS:
Burns & McDonnell
SINCE 1939
1400 West Parkway
Kansas City, MO 64114
Phone (816) 333-9400
Fax (816) 333-3351
http://burnsmcd.com



FACILITIES MANAGEMENT
FLOOR PLAN DRAWINGS
- FOR REFERENCE ONLY -
NOT FOR
CONSTRUCTION



VA EASTERN KANSAS HEALTH CARE SYSTEM

Dwight D. Eisenhower VA Medical Center, Leavenworth
Colmery-O'Neil VA Medical Center, Topeka

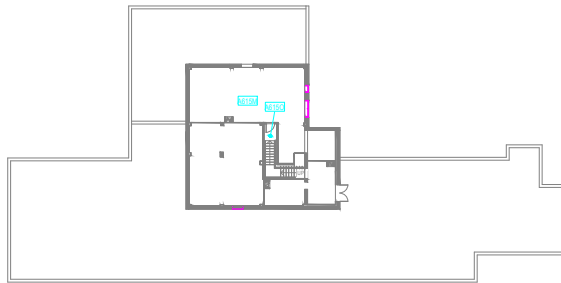
Drawing Title:
LEVEL 5 - OVERALL PLAN
Scale:
1/16" = 1'-0"
Approved:

Project Title:
VA RTLSHOSPITAL
Building Number:
1
Location:
Colmery-O'Neil VA Medical Center, Topeka

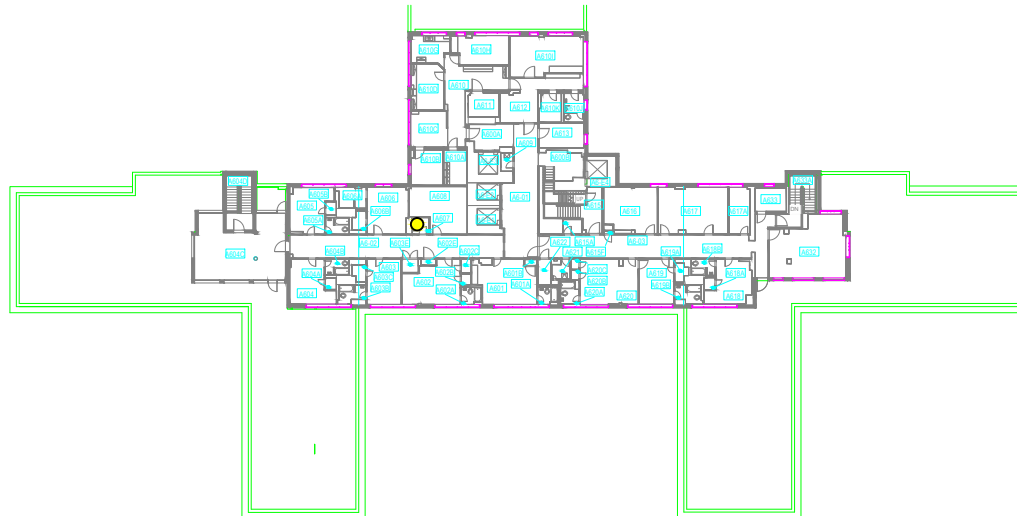
Date:
01/21/2014
Project No.
74344
Drawing No.
AE151
Dwg. Of

Department of
Veterans Affairs

LEGEND	
	CODE BLUE ACTUATOR
	PULL-CORD/LIGHT IN HALL, REMOTE ACTUATOR
	WATER RESISTANT PULL-CORD
	AUDIO PULL-CORD
	PT HEADWALL
	VoIP STAFF TERMINAL
	VoIP NURSE CONTROL
	REMOTE COMPUTER CONSOLE
	ALL NURSE CALL DEVICES TO MEET MENTAL HEALTH STANDARDS



③ PENTHOUSE
1/16" = 1'-0"



① LEVEL 6 - OVERALL PLAN
1/16" = 1'-0"

AE-LEVEL 6 & PENTHOUSE SPACE DRIVER AREA - BY ROOM
NO NAME RETAREA

LEVEL 6		
NO	NAME	RETAREA
COMMON SPACE		
AE-01	CORRIDOR	478.57
AE-02	ELEVATOR	111.57
AE-03	ELEVATOR	88.57
AE-04	ELEVATOR	137.57
AE-05	ELEVATOR	106.57
AE-06	SOUTH ELEVATOR LOBBY	125.57
AE-07	STAIR 1	536.57
AE-08	STAIR 1	114.57
AE-09	HOUSEKEEPING CLOSET	28.57
AE-10	MECHANICAL ROOM	89.57
AE-11	STAIR 4	225.57
AE-12	STAIR 5	122.57
AE-13	STAIR 5	122.57
2606.57		
INFORMATION RESOURCE MGMT		
AE-14	CORRIDOR	163.57
AE-15	CORRIDOR	607.57
AE-16	CONFERENCE ROOM/BREAK ROOM	302.57
AE-17	RESTROOM	38.57
AE-18	CLOSET	8.57
AE-19	VIDEO TAPING COORDINATOR WEB MASTER	267.57
AE-20	RESTROOM	38.57
AE-21	CLOSET	12.57
AE-22	CLOSET	18.57
AE-23	ELEC CLOSET	10.57
AE-24	OFFICE	191.57
AE-25	RESTROOM	32.57
AE-26	CLOSET	25.57
AE-27	ELEC CLOSET	25.57
AE-28	INFORMATION NURSE/STAFF SUPPORT	207.57
AE-29	CLOSET	14.57
AE-30	RESTROOM	43.57
AE-31	2ND FLOOR CLINICAL APP. COORD.	208.57
AE-32	STAFF ONLY	44.57
AE-33	STORAGE	16.57
AE-34	STORAGE	222.57
AE-35	STORAGE	66.57
AE-36	STORAGE	28.57
AE-37	STAFF ONLY	32.57
AE-38	STORAGE	252.57
AE-39	TELECOMMUNICATIONS	37.57
AE-40	STORAGE	36.57
AE-41	TELECOMMUNICATIONS MANAGER	127.57
AE-42	ELECTRONIC SPECIALIST	124.57
AE-43	TEST LAB	176.57
AE-44	BREAK ROOM	109.57
AE-45	COPY ROOM	184.57
AE-46	STORAGE	37.57
AE-47	FIRE EXTINGUISHER	2.57
AE-48	SYSTEMS ADMINISTRATORS	273.57
AE-49	DRUG TRAINING ROOM	376.57
AE-50	WORKROOM	113.57
AE-51	SUPERVISOR, DIT	155.57
AE-52	CLOSET	13.57
AE-53	RESTROOM	44.57
AE-54	HUMAN OFFICIAL, DIT	153.57
AE-55	STORAGE	25.57
AE-56	STAFF ONLY	32.57
AE-57	PAUITY Oid	309.57
AE-58	RESTROOM	42.57
AE-59	CLOSET	9.57
AE-60	CLOSET	9.57
AE-61	HOUSEKEEPING CLOSET	36.57
AE-62	CLOSET	44.57
AE-63	ST CLOSET	35.57
AE-64	DESKTOP SUPPORT	110.57
AE-65	MECHANICAL ROOM	80.57
6963.57		
POLICE/SECURITY SERVICE		
AE-66	STUDIO	337.57
AE-67	STAFF ONLY	87.57
AE-68	STORAGE	72.57
AE-69	RECEPTION	217.57
AE-70	OFFICE	136.57
863.57		
PENTHOUSE		
COMMON SPACE		
AE-71	PENTHOUSE	1885.57
AE-72	STAIR 4	142.57
AE-73	STAIR 4	2107.57
10448.57		

No.	Description	Date
0	100% SUBMITTAL	01/21/2014

ARCHITECTS/ENGINEERS:

 Burns & McDonnell
 SINCE 1898
 4400 West Parkway
 Kansas City, MO 64114
 Phone: (816) 335-5900
 Fax: (816) 335-2051
 http://burnsmcd.com



FACILITIES MANAGEMENT
FLOOR PLAN DRAWINGS
- FOR REFERENCE ONLY -
NOT FOR
CONSTRUCTION



**VA EASTERN KANSAS HEALTH
CARE SYSTEM**

Dwight D. Eisenhower VA Medical Center, Leavenworth
Colmery-O'Neil VA Medical Center, Topeka

Drawing Title:
**LEVEL 6 & PENTHOUSE
-OVERALL PLAN**

Date:
1/16" = 1'-0"

Approved:

Project Title:
**VA
RTLSHOSPITAL**

Building Number:
1

Checked By:
AS

Drawn By:
TC

Location:
Colmery-O'Neil VA Medical
Center, Topeka

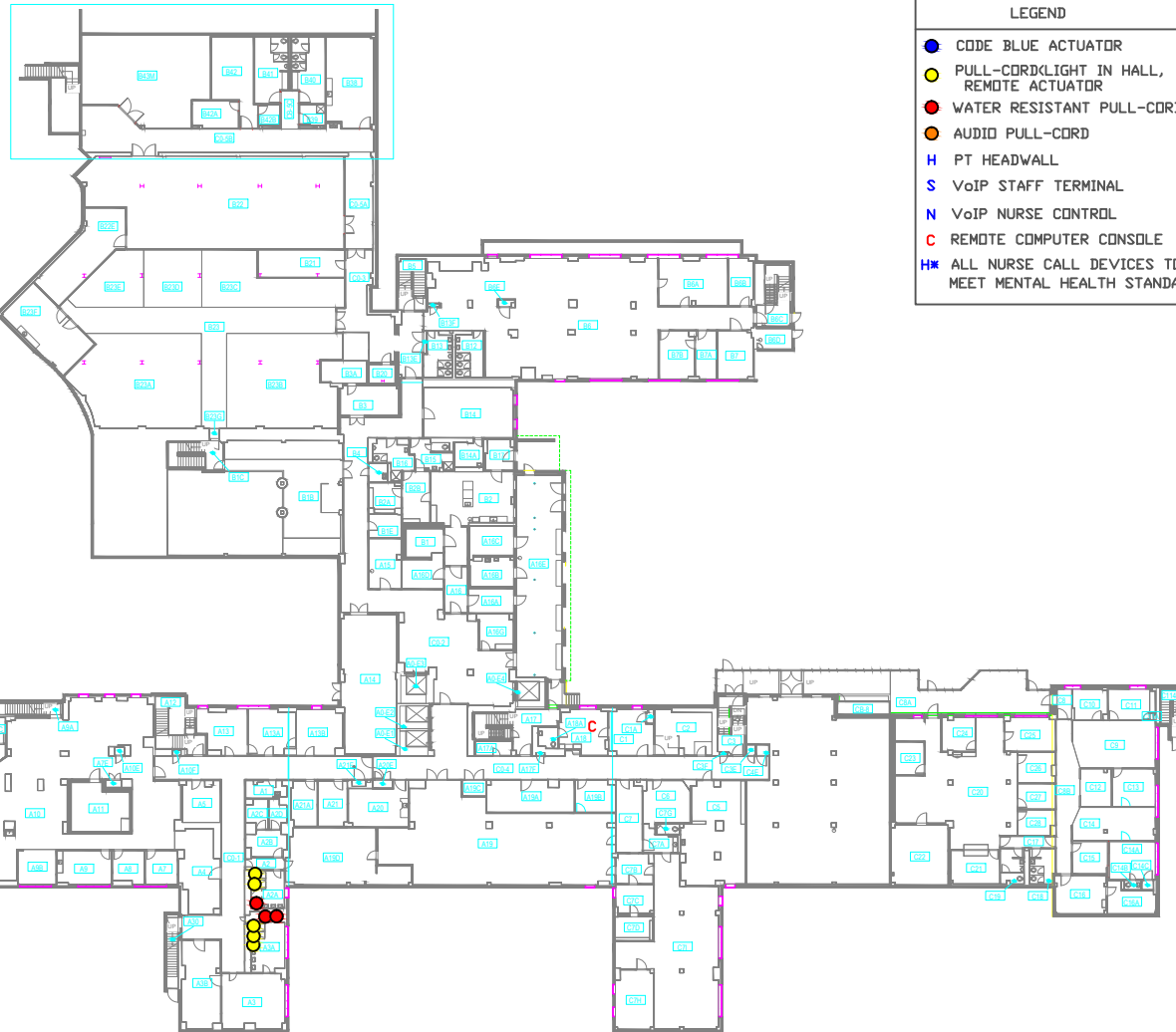
Date:
01/21/2014

Project No.
74344

Drawing No.
AE161

By:
or

Department of
Veterans Affairs



LEGEND

- CODE BLUE ACTUATOR
- PULL-CORD/LIGHT IN HALL, REMOTE ACTUATOR
- WATER RESISTANT PULL-CORD
- AUDIO PULL-CORD
- H PT HEADWALL
- S VoIP STAFF TERMINAL
- N VoIP NURSE CONTROL
- C REMOTE COMPUTER CONSOLE
- HM ALL NURSE CALL DEVICES TO MEET MENTAL HEALTH STANDARDS

NO.	NAME	NET AREA	NO.	NAME	NET AREA
AC1	AC1	100 SF	AC1	AC1	100 SF
AC2	AC2	100 SF	AC2	AC2	100 SF
AC3	AC3	100 SF	AC3	AC3	100 SF
AC4	AC4	100 SF	AC4	AC4	100 SF
AC5	AC5	100 SF	AC5	AC5	100 SF
AC6	AC6	100 SF	AC6	AC6	100 SF
AC7	AC7	100 SF	AC7	AC7	100 SF
AC8	AC8	100 SF	AC8	AC8	100 SF
AC9	AC9	100 SF	AC9	AC9	100 SF
AC10	AC10	100 SF	AC10	AC10	100 SF
AC11	AC11	100 SF	AC11	AC11	100 SF
AC12	AC12	100 SF	AC12	AC12	100 SF
AC13	AC13	100 SF	AC13	AC13	100 SF
AC14	AC14	100 SF	AC14	AC14	100 SF
AC15	AC15	100 SF	AC15	AC15	100 SF
AC16	AC16	100 SF	AC16	AC16	100 SF
AC17	AC17	100 SF	AC17	AC17	100 SF
AC18	AC18	100 SF	AC18	AC18	100 SF
AC19	AC19	100 SF	AC19	AC19	100 SF
AC20	AC20	100 SF	AC20	AC20	100 SF
AC21	AC21	100 SF	AC21	AC21	100 SF
AC22	AC22	100 SF	AC22	AC22	100 SF
AC23	AC23	100 SF	AC23	AC23	100 SF
AC24	AC24	100 SF	AC24	AC24	100 SF
AC25	AC25	100 SF	AC25	AC25	100 SF
AC26	AC26	100 SF	AC26	AC26	100 SF
AC27	AC27	100 SF	AC27	AC27	100 SF
AC28	AC28	100 SF	AC28	AC28	100 SF
AC29	AC29	100 SF	AC29	AC29	100 SF
AC30	AC30	100 SF	AC30	AC30	100 SF
AC31	AC31	100 SF	AC31	AC31	100 SF
AC32	AC32	100 SF	AC32	AC32	100 SF
AC33	AC33	100 SF	AC33	AC33	100 SF
AC34	AC34	100 SF	AC34	AC34	100 SF
AC35	AC35	100 SF	AC35	AC35	100 SF
AC36	AC36	100 SF	AC36	AC36	100 SF
AC37	AC37	100 SF	AC37	AC37	100 SF
AC38	AC38	100 SF	AC38	AC38	100 SF
AC39	AC39	100 SF	AC39	AC39	100 SF
AC40	AC40	100 SF	AC40	AC40	100 SF
AC41	AC41	100 SF	AC41	AC41	100 SF
AC42	AC42	100 SF	AC42	AC42	100 SF
AC43	AC43	100 SF	AC43	AC43	100 SF
AC44	AC44	100 SF	AC44	AC44	100 SF
AC45	AC45	100 SF	AC45	AC45	100 SF
AC46	AC46	100 SF	AC46	AC46	100 SF
AC47	AC47	100 SF	AC47	AC47	100 SF
AC48	AC48	100 SF	AC48	AC48	100 SF
AC49	AC49	100 SF	AC49	AC49	100 SF
AC50	AC50	100 SF	AC50	AC50	100 SF
AC51	AC51	100 SF	AC51	AC51	100 SF
AC52	AC52	100 SF	AC52	AC52	100 SF
AC53	AC53	100 SF	AC53	AC53	100 SF
AC54	AC54	100 SF	AC54	AC54	100 SF
AC55	AC55	100 SF	AC55	AC55	100 SF
AC56	AC56	100 SF	AC56	AC56	100 SF
AC57	AC57	100 SF	AC57	AC57	100 SF
AC58	AC58	100 SF	AC58	AC58	100 SF
AC59	AC59	100 SF	AC59	AC59	100 SF
AC60	AC60	100 SF	AC60	AC60	100 SF
AC61	AC61	100 SF	AC61	AC61	100 SF
AC62	AC62	100 SF	AC62	AC62	100 SF
AC63	AC63	100 SF	AC63	AC63	100 SF
AC64	AC64	100 SF	AC64	AC64	100 SF
AC65	AC65	100 SF	AC65	AC65	100 SF
AC66	AC66	100 SF	AC66	AC66	100 SF
AC67	AC67	100 SF	AC67	AC67	100 SF
AC68	AC68	100 SF	AC68	AC68	100 SF
AC69	AC69	100 SF	AC69	AC69	100 SF
AC70	AC70	100 SF	AC70	AC70	100 SF
AC71	AC71	100 SF	AC71	AC71	100 SF
AC72	AC72	100 SF	AC72	AC72	100 SF
AC73	AC73	100 SF	AC73	AC73	100 SF
AC74	AC74	100 SF	AC74	AC74	100 SF
AC75	AC75	100 SF	AC75	AC75	100 SF
AC76	AC76	100 SF	AC76	AC76	100 SF
AC77	AC77	100 SF	AC77	AC77	100 SF
AC78	AC78	100 SF	AC78	AC78	100 SF
AC79	AC79	100 SF	AC79	AC79	100 SF
AC80	AC80	100 SF	AC80	AC80	100 SF
AC81	AC81	100 SF	AC81	AC81	100 SF
AC82	AC82	100 SF	AC82	AC82	100 SF
AC83	AC83	100 SF	AC83	AC83	100 SF
AC84	AC84	100 SF	AC84	AC84	100 SF
AC85	AC85	100 SF	AC85	AC85	100 SF
AC86	AC86	100 SF	AC86	AC86	100 SF
AC87	AC87	100 SF	AC87	AC87	100 SF
AC88	AC88	100 SF	AC88	AC88	100 SF
AC89	AC89	100 SF	AC89	AC89	100 SF
AC90	AC90	100 SF	AC90	AC90	100 SF
AC91	AC91	100 SF	AC91	AC91	100 SF
AC92	AC92	100 SF	AC92	AC92	100 SF
AC93	AC93	100 SF	AC93	AC93	100 SF
AC94	AC94	100 SF	AC94	AC94	100 SF
AC95	AC95	100 SF	AC95	AC95	100 SF
AC96	AC96	100 SF	AC96	AC96	100 SF
AC97	AC97	100 SF	AC97	AC97	100 SF
AC98	AC98	100 SF	AC98	AC98	100 SF
AC99	AC99	100 SF	AC99	AC99	100 SF
AC100	AC100	100 SF	AC100	AC100	100 SF

BASEMENT - OVERALL PLAN
1/16" = 1'-0"

No.	Description	Date
1	100% SUBMITTAL	01/21/2014

ARCHITECTS/ENGINEERS:

Burns & McDonnell
SINCE 1909

4400 West Parkway
Kansas City, MO 64114
Phone: (816) 335-5900
Fax: (816) 335-2051
http://burnsmcdonnell.com

Building Key Plan:

FACILITIES MANAGEMENT
FLOOR PLAN DRAWINGS
- FOR REFERENCE ONLY -
NOT FOR CONSTRUCTION

VA EASTERN KANSAS HEALTH CARE SYSTEM

Dwight D. Eisenhower VA Medical Center, Leavenworth
Colmery-O'Neil VA Medical Center, Topeka

Drawing Title: **BASEMENT - OVERALL PLAN**

Date: 1/16" = 1'-0"

Approved: _____

Project Title: **VA RTLSHOSPITAL**

Building Number: 1
Checked By: AS
Drawn By: TC

Date: 01/21/2014
Project No. 74344
Drawing No. AE101

Department of Veterans Affairs

LEGEND	
●	CODE BLUE ACTUATOR
●	PULL-CORD/LIGHT IN HALL, REMOTE ACTUATOR
●	WATER RESISTANT PULL-CORD
●	AUDIO PULL-CORD
H	PT HEADWALL
S	VoIP STAFF TERMINAL
N	VoIP NURSE CONTROL
C	REMOTE COMPUTER CONSOLE

AE-LEVEL 1 SPACE DRIVER AREA - BY ROOM		
NO	NAME	NET AREA
A101	RECEPTION	62 SF
A102	STAFF RESTROOM	22 SF
A103	UNIVERSAL WASTE	22 SF
A104	LOBBY	122 SF
A105	STAFF ONLY	71 SF
A106	WOMEN	119 SF
A107	WORKROOM	162 SF
A108	WOMEN	142 SF
A109	WOMEN	142 SF

COMMON SPACE		
NO	NAME	NET AREA
A110	STAR 1	49 SF
A111	STAR 2	122 SF
A112	STAR 3	112 SF
A113	STAR 4	112 SF
A114	STAR 5	112 SF
A115	STAR 6	112 SF
A116	STAR 7	112 SF
A117	STAR 8	112 SF
A118	STAR 9	112 SF
A119	STAR 10	112 SF
A120	STAR 11	112 SF
A121	STAR 12	112 SF
A122	STAR 13	112 SF
A123	STAR 14	112 SF
A124	STAR 15	112 SF
A125	STAR 16	112 SF
A126	STAR 17	112 SF
A127	STAR 18	112 SF
A128	STAR 19	112 SF
A129	STAR 20	112 SF
A130	STAR 21	112 SF
A131	STAR 22	112 SF
A132	STAR 23	112 SF
A133	STAR 24	112 SF
A134	STAR 25	112 SF
A135	STAR 26	112 SF
A136	STAR 27	112 SF
A137	STAR 28	112 SF
A138	STAR 29	112 SF
A139	STAR 30	112 SF
A140	STAR 31	112 SF
A141	STAR 32	112 SF
A142	STAR 33	112 SF
A143	STAR 34	112 SF
A144	STAR 35	112 SF
A145	STAR 36	112 SF
A146	STAR 37	112 SF
A147	STAR 38	112 SF
A148	STAR 39	112 SF
A149	STAR 40	112 SF
A150	STAR 41	112 SF
A151	STAR 42	112 SF
A152	STAR 43	112 SF
A153	STAR 44	112 SF
A154	STAR 45	112 SF
A155	STAR 46	112 SF
A156	STAR 47	112 SF
A157	STAR 48	112 SF
A158	STAR 49	112 SF
A159	STAR 50	112 SF
A160	STAR 51	112 SF
A161	STAR 52	112 SF
A162	STAR 53	112 SF
A163	STAR 54	112 SF
A164	STAR 55	112 SF
A165	STAR 56	112 SF
A166	STAR 57	112 SF
A167	STAR 58	112 SF
A168	STAR 59	112 SF
A169	STAR 60	112 SF
A170	STAR 61	112 SF
A171	STAR 62	112 SF
A172	STAR 63	112 SF
A173	STAR 64	112 SF
A174	STAR 65	112 SF
A175	STAR 66	112 SF
A176	STAR 67	112 SF
A177	STAR 68	112 SF
A178	STAR 69	112 SF
A179	STAR 70	112 SF
A180	STAR 71	112 SF
A181	STAR 72	112 SF
A182	STAR 73	112 SF
A183	STAR 74	112 SF
A184	STAR 75	112 SF
A185	STAR 76	112 SF
A186	STAR 77	112 SF
A187	STAR 78	112 SF
A188	STAR 79	112 SF
A189	STAR 80	112 SF
A190	STAR 81	112 SF
A191	STAR 82	112 SF
A192	STAR 83	112 SF
A193	STAR 84	112 SF
A194	STAR 85	112 SF
A195	STAR 86	112 SF
A196	STAR 87	112 SF
A197	STAR 88	112 SF
A198	STAR 89	112 SF
A199	STAR 90	112 SF
A200	STAR 91	112 SF
A201	STAR 92	112 SF
A202	STAR 93	112 SF
A203	STAR 94	112 SF
A204	STAR 95	112 SF
A205	STAR 96	112 SF
A206	STAR 97	112 SF
A207	STAR 98	112 SF
A208	STAR 99	112 SF
A209	STAR 100	112 SF

MEDICAL MEDIA		
NO	NAME	NET AREA
A210	TELE ALLOE	12 SF
A211	TELE ALLOE	12 SF
A212	TELE CLOSET	35 SF
A213	TELE CLOSET	35 SF
A214	TELE CLOSET	35 SF
A215	TELE CLOSET	35 SF
A216	TELE CLOSET	35 SF
A217	TELE CLOSET	35 SF
A218	TELE CLOSET	35 SF
A219	TELE CLOSET	35 SF
A220	TELE CLOSET	35 SF
A221	TELE CLOSET	35 SF
A222	TELE CLOSET	35 SF
A223	TELE CLOSET	35 SF
A224	TELE CLOSET	35 SF
A225	TELE CLOSET	35 SF
A226	TELE CLOSET	35 SF
A227	TELE CLOSET	35 SF
A228	TELE CLOSET	35 SF
A229	TELE CLOSET	35 SF
A230	TELE CLOSET	35 SF
A231	TELE CLOSET	35 SF
A232	TELE CLOSET	35 SF
A233	TELE CLOSET	35 SF
A234	TELE CLOSET	35 SF
A235	TELE CLOSET	35 SF
A236	TELE CLOSET	35 SF
A237	TELE CLOSET	35 SF
A238	TELE CLOSET	35 SF
A239	TELE CLOSET	35 SF
A240	TELE CLOSET	35 SF
A241	TELE CLOSET	35 SF
A242	TELE CLOSET	35 SF
A243	TELE CLOSET	35 SF
A244	TELE CLOSET	35 SF
A245	TELE CLOSET	35 SF
A246	TELE CLOSET	35 SF
A247	TELE CLOSET	35 SF
A248	TELE CLOSET	35 SF
A249	TELE CLOSET	35 SF
A250	TELE CLOSET	35 SF
A251	TELE CLOSET	35 SF
A252	TELE CLOSET	35 SF
A253	TELE CLOSET	35 SF
A254	TELE CLOSET	35 SF
A255	TELE CLOSET	35 SF
A256	TELE CLOSET	35 SF
A257	TELE CLOSET	35 SF
A258	TELE CLOSET	35 SF
A259	TELE CLOSET	35 SF
A260	TELE CLOSET	35 SF
A261	TELE CLOSET	35 SF
A262	TELE CLOSET	35 SF
A263	TELE CLOSET	35 SF
A264	TELE CLOSET	35 SF
A265	TELE CLOSET	35 SF
A266	TELE CLOSET	35 SF
A267	TELE CLOSET	35 SF
A268	TELE CLOSET	35 SF
A269	TELE CLOSET	35 SF
A270	TELE CLOSET	35 SF
A271	TELE CLOSET	35 SF
A272	TELE CLOSET	35 SF
A273	TELE CLOSET	35 SF
A274	TELE CLOSET	35 SF
A275	TELE CLOSET	35 SF
A276	TELE CLOSET	35 SF
A277	TELE CLOSET	35 SF
A278	TELE CLOSET	35 SF
A279	TELE CLOSET	35 SF
A280	TELE CLOSET	35 SF
A281	TELE CLOSET	35 SF
A282	TELE CLOSET	35 SF
A283	TELE CLOSET	35 SF
A284	TELE CLOSET	35 SF
A285	TELE CLOSET	35 SF
A286	TELE CLOSET	35 SF
A287	TELE CLOSET	35 SF
A288	TELE CLOSET	35 SF
A289	TELE CLOSET	35 SF
A290	TELE CLOSET	35 SF
A291	TELE CLOSET	35 SF
A292	TELE CLOSET	35 SF
A293	TELE CLOSET	35 SF
A294	TELE CLOSET	35 SF
A295	TELE CLOSET	35 SF
A296	TELE CLOSET	35 SF
A297	TELE CLOSET	35 SF
A298	TELE CLOSET	35 SF
A299	TELE CLOSET	35 SF
A300	TELE CLOSET	35 SF

MENTAL HEALTH CLINIC		
NO	NAME	NET AREA
A301	RECEPTION	62 SF
A302	STAFF RESTROOM	22 SF
A303	UNIVERSAL WASTE	22 SF
A304	LOBBY	122 SF
A305	STAFF ONLY	71 SF
A306	WOMEN	119 SF
A307	WORKROOM	162 SF
A308	WOMEN	142 SF
A309	WOMEN	142 SF

MEDICAL MEDIA		
NO	NAME	NET AREA
A310	TELE ALLOE	12 SF
A311	TELE ALLOE	12 SF
A312	TELE CLOSET	35 SF
A313	TELE CLOSET	35 SF
A314	TELE CLOSET	35 SF
A315	TELE CLOSET	35 SF
A316	TELE CLOSET	35 SF
A317	TELE CLOSET	35 SF
A318	TELE CLOSET	35 SF
A319	TELE CLOSET	35 SF
A320	TELE CLOSET	35 SF
A321	TELE CLOSET	35 SF
A322	TELE CLOSET	35 SF
A323	TELE CLOSET	35 SF
A324	TELE CLOSET	35 SF
A325	TELE CLOSET	35 SF
A326	TELE CLOSET	35 SF
A327	TELE CLOSET	35 SF
A328	TELE CLOSET	35 SF
A329	TELE CLOSET	35 SF
A330	TELE CLOSET	35 SF
A331	TELE CLOSET	35 SF
A332	TELE CLOSET	35 SF
A333	TELE CLOSET	35 SF
A334	TELE CLOSET	35 SF
A335	TELE CLOSET	35 SF
A336	TELE CLOSET	35 SF
A337	TELE CLOSET	35 SF
A338	TELE CLOSET	35 SF
A339	TELE CLOSET	35 SF
A340	TELE CLOSET	35 SF
A341	TELE CLOSET	35 SF
A342	TELE CLOSET	35 SF
A343	TELE CLOSET	35 SF
A344	TELE CLOSET	35 SF
A345	TELE CLOSET	35 SF
A346	TELE CLOSET	35 SF
A347	TELE CLOSET	35 SF
A348	TELE CLOSET	35 SF
A349	TELE CLOSET	35 SF
A350	TELE CLOSET	35 SF
A351	TELE CLOSET	35 SF
A352	TELE CLOSET	35 SF
A353	TELE CLOSET	35 SF
A354	TELE CLOSET	35 SF
A355	TELE CLOSET	35 SF
A356	TELE CLOSET	35 SF
A357	TELE CLOSET	35 SF
A358	TELE CLOSET	35 SF
A359	TELE CLOSET	35 SF
A360	TELE CLOSET	35 SF
A361	TELE CLOSET	35 SF
A362	TELE CLOSET	35 SF
A363	TELE CLOSET	35 SF
A364	TELE CLOSET	35 SF
A365	TELE CLOSET	35 SF
A366	TELE CLOSET	35 SF
A367	TELE CLOSET	35 SF
A368	TELE CLOSET	35 SF
A369	TELE CLOSET	35 SF
A370	TELE CLOSET	35 SF
A371	TELE CLOSET	35 SF
A372	TELE CLOSET	35 SF
A373	TELE CLOSET	35 SF
A374	TELE CLOSET	35 SF
A375	TELE CLOSET	35 SF
A376	TELE CLOSET	35 SF
A377	TELE CLOSET	35 SF
A378	TELE CLOSET	35 SF
A379	TELE CLOSET	35 SF
A380	TELE CLOSET	35 SF
A381	TELE CLOSET	35 SF
A382	TELE CLOSET	35 SF
A383	TELE CLOSET	35 SF
A384	TELE CLOSET	35 SF
A385	TELE CLOSET	35 SF
A386	TELE CLOSET	35 SF
A387	TELE CLOSET	35 SF
A388	TELE CLOSET	35 SF
A389	TELE CLOSET	35 SF
A390	TELE CLOSET	35 SF
A391	TELE CLOSET	35 SF
A392	TELE CLOSET	35 SF
A393	TELE CLOSET	35 SF
A394	TELE CLOSET	35 SF
A395	TELE CLOSET	35 SF
A396	TELE CLOSET	35 SF
A397	TELE CLOSET	35 SF
A398	TELE CLOSET	35 SF
A399	TELE CLOSET	35 SF
A400	TELE CLOSET	35 SF

MENTAL HEALTH CLINIC		
NO	NAME	NET AREA
A401	RECEPTION	62 SF
A402	STAFF RESTROOM	22 SF
A403	UNIVERSAL WASTE	22 SF
A404	LOBBY	122 SF
A405	STAFF ONLY	71 SF
A406	WOMEN	119 SF
A407	WORKROOM	162 SF
A408	WOMEN	142 SF
A409	WOMEN	142 SF

C159F	FIRE CLOSET	3 SF
C161	HOUSEKEEPING	28 SF

LEGEND

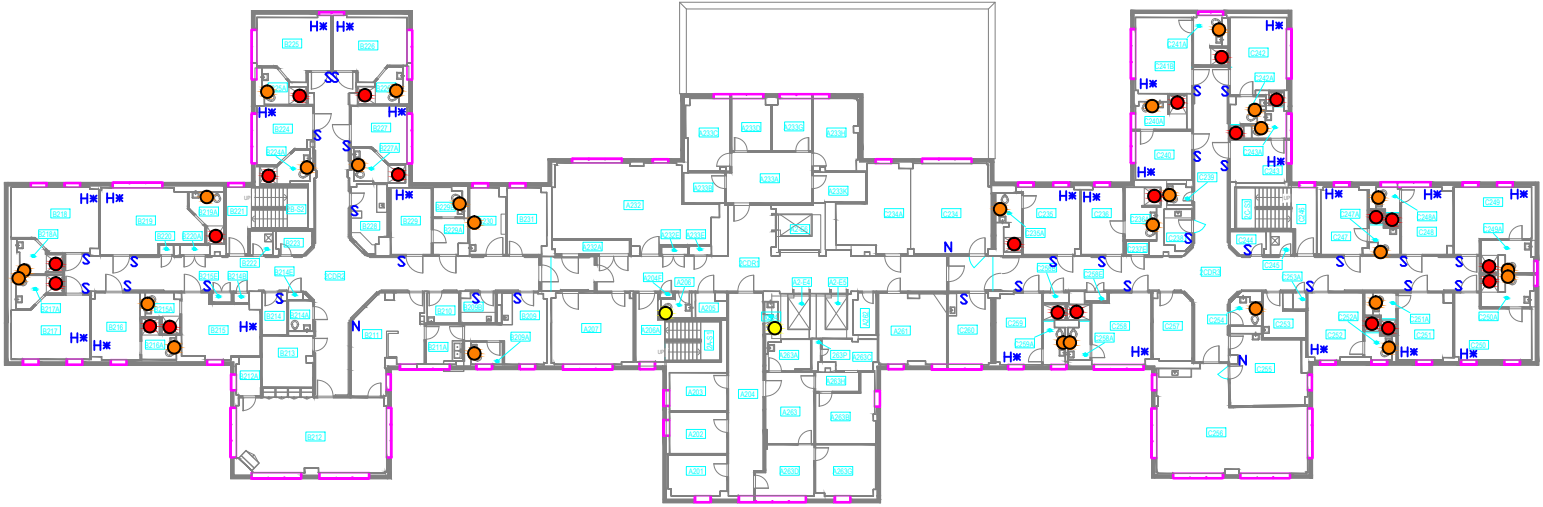
- CODE BLUE ACTUATOR
- PULL-CORD/LIGHT IN HALL, REMOTE ACTUATOR
- WATER RESISTANT PULL-CORD
- AUDIO PULL-CORD
- PT HEADWALL
- VoIP STAFF TERMINAL
- VoIP NURSE CONTROL
- REMOTE COMPUTER CONSOLE
- ALL NURSE CALL DEVICES TO MEET MENTAL HEALTH STANDARDS

AE-LEVEL 2 SPACE DRIVER AREA - BY ROOM		
NO	NAME	NET AREA
CENTRALIZED STAFF LOCKER/STORAGE/TOILETS		
A206	MEIN	35 SF
COMMON SPACE		
A2411	STAIR 1	100 SF
A2412	STAIR 2	100 SF
A2413	STAIR 3	119 SF
A2081	CORRIDOR	887 SF
A2124	ELEV #4	85 SF
A2125	ELEV #5	85 SF
A2126	ELEV #6	122 SF
A2041	FIRE CLOSET	3 SF
A200A	STAIR 1	94 SF
A200B	ELECTRICAL CLOSET	10 SF
A201E	ELECTRICAL CLOSET	10 SF
A201F	STAIR 2	83 SF
A206	STAIR 3	84 SF
INFORMATION RESOURCE MGMT		
A205	NETWORK CLOSET	35 SF
MENTAL HEALTH CLINIC		
A2092	CORRIDOR	1,462 SF
A2093	CORRIDOR	1,466 SF
A2091	CONFERENCE ROOM	247 SF
A2092	MODERATING	45 SF
A2093	STAFF BREAKROOM	189 SF
A209A	RESTROOM	35 SF
A209B	TOILET/STATION	12 SF
A209C	PATIENT LAUNDRY	93 SF
A209D	NURSE STATION	257 SF
A209E	SWAP ONLY	70 SF
A209F	DAY ROOM	689 SF
A209G	STORAGE	48 SF
A209H	NURSE MANAGER	115 SF
A209I	CLEAN LINEN	33 SF
A209J	RESTROOM	35 SF

AE-LEVEL 2 SPACE DRIVER AREA - BY ROOM		
NO	NAME	NET AREA
A2148	STORAGE	6 SF
A2149	ELECTRICAL CLOSET	6 SF
A2150	PATIENT ROOM	292 SF
A2151	RESTROOM	37 SF
A2152	ELECTRICAL CLOSET	10 SF
A2153	PATIENT ROOM	188 SF
A2154	RESTROOM	37 SF
A2155	PATIENT ROOM	292 SF
A2156	RESTROOM	37 SF
A2157	PATIENT ROOM	292 SF
A2158	RESTROOM	37 SF
A2159	PATIENT ROOM	292 SF
A2160	RESTROOM	37 SF
A2161	PATIENT ROOM	292 SF
A2162	RESTROOM	37 SF
A2163	PATIENT ROOM	292 SF
A2164	RESTROOM	37 SF
A2165	PATIENT ROOM	292 SF
A2166	RESTROOM	37 SF
A2167	PATIENT ROOM	292 SF
A2168	RESTROOM	37 SF
A2169	PATIENT ROOM	292 SF
A2170	RESTROOM	37 SF
A2171	PATIENT ROOM	292 SF
A2172	RESTROOM	37 SF
A2173	PATIENT ROOM	292 SF
A2174	RESTROOM	37 SF
A2175	PATIENT ROOM	292 SF
A2176	RESTROOM	37 SF
A2177	PATIENT ROOM	292 SF
A2178	RESTROOM	37 SF
A2179	PATIENT ROOM	292 SF
A2180	RESTROOM	37 SF
A2181	PATIENT ROOM	292 SF
A2182	RESTROOM	37 SF
A2183	PATIENT ROOM	292 SF
A2184	RESTROOM	37 SF
A2185	PATIENT ROOM	292 SF
A2186	RESTROOM	37 SF
A2187	PATIENT ROOM	292 SF
A2188	RESTROOM	37 SF
A2189	PATIENT ROOM	292 SF
A2190	RESTROOM	37 SF
A2191	PATIENT ROOM	292 SF
A2192	RESTROOM	37 SF
A2193	PATIENT ROOM	292 SF
A2194	RESTROOM	37 SF
A2195	PATIENT ROOM	292 SF
A2196	RESTROOM	37 SF
A2197	PATIENT ROOM	292 SF
A2198	RESTROOM	37 SF
A2199	PATIENT ROOM	292 SF
A2200	RESTROOM	37 SF

AE-LEVEL 2 SPACE DRIVER AREA - BY ROOM		
NO	NAME	NET AREA
A2216	ELECTRICAL CLOSET	16 SF
A2217	MEDICATION ROOM	35 SF
A2218	MEIN	30 SF
A2219	PATIENT ROOM	144 SF
A2220	RESTROOM	37 SF
A2221	PATIENT ROOM	144 SF
A2222	RESTROOM	37 SF
A2223	PATIENT ROOM	144 SF
A2224	RESTROOM	37 SF
A2225	PATIENT ROOM	144 SF
A2226	RESTROOM	37 SF
A2227	PATIENT ROOM	144 SF
A2228	RESTROOM	37 SF
A2229	PATIENT ROOM	144 SF
A2230	RESTROOM	37 SF
A2231	PATIENT ROOM	144 SF
A2232	RESTROOM	37 SF
A2233	PATIENT ROOM	144 SF
A2234	RESTROOM	37 SF
A2235	PATIENT ROOM	144 SF
A2236	RESTROOM	37 SF
A2237	PATIENT ROOM	144 SF
A2238	RESTROOM	37 SF
A2239	PATIENT ROOM	144 SF
A2240	RESTROOM	37 SF
A2241	PATIENT ROOM	144 SF
A2242	RESTROOM	37 SF
A2243	PATIENT ROOM	144 SF
A2244	RESTROOM	37 SF
A2245	PATIENT ROOM	144 SF
A2246	RESTROOM	37 SF
A2247	PATIENT ROOM	144 SF
A2248	RESTROOM	37 SF
A2249	PATIENT ROOM	144 SF
A2250	RESTROOM	37 SF
A2251	PATIENT ROOM	144 SF
A2252	RESTROOM	37 SF
A2253	PATIENT ROOM	144 SF
A2254	RESTROOM	37 SF
A2255	PATIENT ROOM	144 SF
A2256	RESTROOM	37 SF
A2257	PATIENT ROOM	144 SF
A2258	RESTROOM	37 SF
A2259	PATIENT ROOM	144 SF
A2260	RESTROOM	37 SF
A2261	PATIENT ROOM	144 SF
A2262	RESTROOM	37 SF
A2263	PATIENT ROOM	144 SF
A2264	RESTROOM	37 SF
A2265	PATIENT ROOM	144 SF
A2266	RESTROOM	37 SF
A2267	PATIENT ROOM	144 SF
A2268	RESTROOM	37 SF
A2269	PATIENT ROOM	144 SF
A2270	RESTROOM	37 SF
A2271	PATIENT ROOM	144 SF
A2272	RESTROOM	37 SF
A2273	PATIENT ROOM	144 SF
A2274	RESTROOM	37 SF
A2275	PATIENT ROOM	144 SF
A2276	RESTROOM	37 SF
A2277	PATIENT ROOM	144 SF
A2278	RESTROOM	37 SF
A2279	PATIENT ROOM	144 SF
A2280	RESTROOM	37 SF
A2281	PATIENT ROOM	144 SF
A2282	RESTROOM	37 SF
A2283	PATIENT ROOM	144 SF
A2284	RESTROOM	37 SF
A2285	PATIENT ROOM	144 SF
A2286	RESTROOM	37 SF
A2287	PATIENT ROOM	144 SF
A2288	RESTROOM	37 SF
A2289	PATIENT ROOM	144 SF
A2290	RESTROOM	37 SF
A2291	PATIENT ROOM	144 SF
A2292	RESTROOM	37 SF
A2293	PATIENT ROOM	144 SF
A2294	RESTROOM	37 SF
A2295	PATIENT ROOM	144 SF
A2296	RESTROOM	37 SF
A2297	PATIENT ROOM	144 SF
A2298	RESTROOM	37 SF
A2299	PATIENT ROOM	144 SF
A2300	RESTROOM	37 SF

AE-LEVEL 2 SPACE DRIVER AREA - BY ROOM		
NO	NAME	NET AREA
A2301	LOUNGE	1,973 SF
A2302	ADMINISTRATION	14 SF
A2303	STUDENT OFFICE	122 SF
A2304	STUDENT OFFICE	122 SF
A2305	STUDENT OFFICE	119 SF
A2306	STUDENT OFFICE	389 SF
A2307	CONFERENCE ROOM	301 SF
A2308	CONFERENCE ROOM	602 SF
A2309	EMERGENCY EQUIPMENT	54 SF
A2310	STAFF OFFICES	222 SF
A2311	OFFICE	45 SF
A2312	OFFICE	161 SF
A2313	OFFICE	166 SF
A2314	PROGRAM SUPPORT ASSISTANT	166 SF
A2315	ASSOCIATE CHIEF NURSE BHS	166 SF
A2316	OFFICE	81 SF
A2317	OFFICE	81 SF
A2318	OFFICE	81 SF
A2319	OFFICE	81 SF
A2320	OFFICE	81 SF
A2321	OFFICE	81 SF
A2322	OFFICE	81 SF
A2323	OFFICE	81 SF
A2324	OFFICE	81 SF
A2325	OFFICE	81 SF
A2326	OFFICE	81 SF
A2327	OFFICE	81 SF
A2328	OFFICE	81 SF
A2329	OFFICE	81 SF
A2330	OFFICE	81 SF
A2331	OFFICE	81 SF
A2332	OFFICE	81 SF
A2333	OFFICE	81 SF
A2334	OFFICE	81 SF
A2335	OFFICE	81 SF
A2336	OFFICE	81 SF
A2337	OFFICE	81 SF
A2338	OFFICE	81 SF
A2339	OFFICE	81 SF
A2340	OFFICE	81 SF
A2341	OFFICE	81 SF
A2342	OFFICE	81 SF
A2343	OFFICE	81 SF
A2344	OFFICE	81 SF
A2345	OFFICE	81 SF
A2346	OFFICE	81 SF
A2347	OFFICE	81 SF
A2348	OFFICE	81 SF
A2349	OFFICE	81 SF
A2350	OFFICE	81 SF
A2351	OFFICE	81 SF
A2352	OFFICE	81 SF
A2353	OFFICE	81 SF
A2354	OFFICE	81 SF
A2355	OFFICE	81 SF
A2356	OFFICE	81 SF
A2357	OFFICE	81 SF
A2358	OFFICE	81 SF
A2359	OFFICE	81 SF
A2360	OFFICE	81 SF
A2361	OFFICE	81 SF
A2362	OFFICE	81 SF
A2363	OFFICE	81 SF
A2364	OFFICE	81 SF
A2365	OFFICE	81 SF
A2366	OFFICE	81 SF
A2367	OFFICE	81 SF
A2368	OFFICE	81 SF
A2369	OFFICE	81 SF
A2370	OFFICE	81 SF
A2371	OFFICE	81 SF
A2372	OFFICE	81 SF
A2373	OFFICE	81 SF
A2374	OFFICE	81 SF
A2375	OFFICE	81 SF
A2376	OFFICE	81 SF
A2377	OFFICE	81 SF
A2378	OFFICE	81 SF
A2379	OFFICE	81 SF
A2380	OFFICE	81 SF
A2381	OFFICE	81 SF
A2382	OFFICE	81 SF
A2383	OFFICE	81 SF
A2384	OFFICE	81 SF
A2385	OFFICE	81 SF
A2386	OFFICE	81 SF
A2387	OFFICE	81 SF
A2388	OFFICE	81 SF
A2389	OFFICE	81 SF
A2390	OFFICE	81 SF
A2391	OFFICE	81 SF
A2392	OFFICE	81 SF
A2393	OFFICE	81 SF
A2394	OFFICE	81 SF
A2395	OFFICE	81 SF
A2396	OFFICE	81 SF
A2397	OFFICE	81 SF
A2398	OFFICE	81 SF
A2399	OFFICE	81 SF
A2400	OFFICE	81 SF



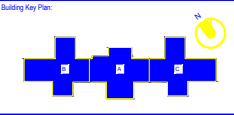
LEVEL 2 - OVERALL PLAN
3/32" = 1'-0"

No.	Description	Date
0	100% SUBMITTAL	01/21/2014

ARCHITECTS/ENGINEERS:

Burns & McDonnell
SINCE 1888

4400 West Parkway
Kansas City, MO 64114
Phone: (816) 335-5900
Fax: (816) 335-5901
http://burnsmcd.com



FACILITIES MANAGEMENT
FLOOR PLAN DRAWINGS
- FOR REFERENCE ONLY -
NOT FOR CONSTRUCTION



VA EASTERN KANSAS HEALTH CARE SYSTEM
Dwight D. Eisenhower VA Medical Center, Leavenworth
Colmery-O'Neil VA Medical Center, Topeka

Drawing Title: LEVEL 2 - OVERALL PLAN
Scale: 3/32" = 1'-0"
Building Number: 2
Checked By: AS
Drawn By: TC

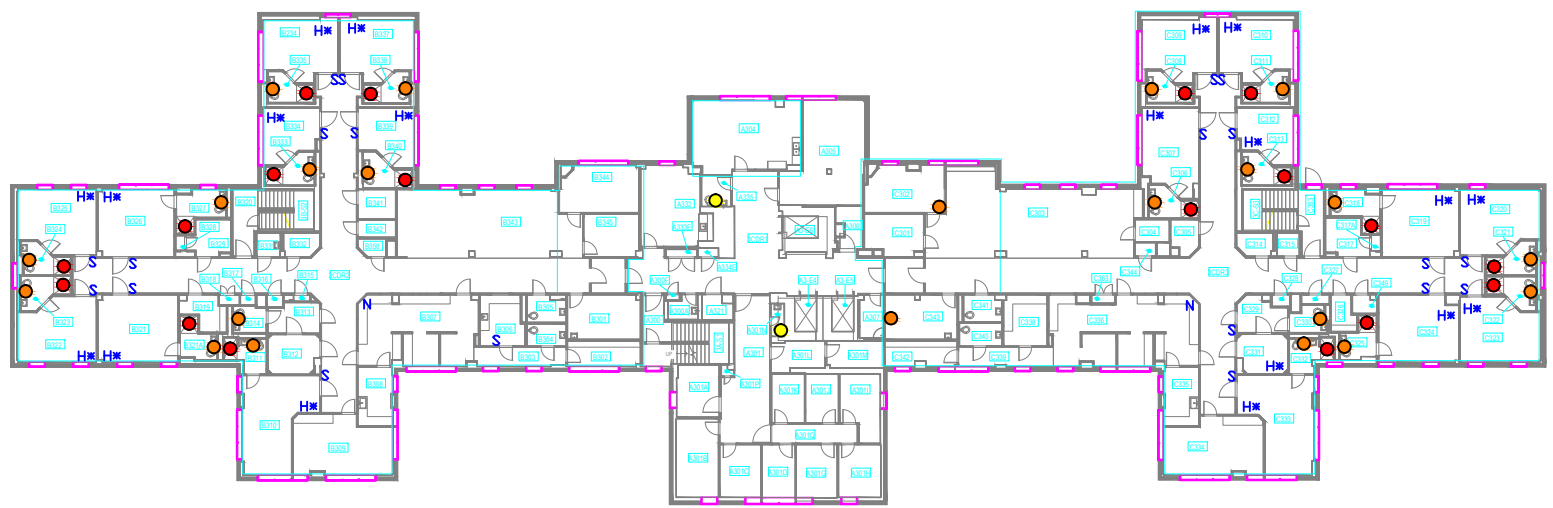
Project Title: MENTAL HEALTH SERVICES
Date: 01/21/2014
Project No: 74344
Drawing No: AE121
Location: Colmery-O'Neil VA Medical Center, Topeka

Department of Veterans Affairs

LEGEND

- CODE BLUE ACTUATOR
- PULL-CORD/LIGHT IN HALL, REMOTE ACTUATOR
- WATER RESISTANT PULL-CORD
- AUDIO PULL-CORD
- H PT HEADWALL
- S VoIP STAFF TERMINAL
- N VoIP NURSE CONTROL
- C REMOTE COMPUTER CONSOLE
- H* ALL NURSE CALL DEVICES TO MEET MENTAL HEALTH STANDARDS

LEVEL 3 - SPACE DRIVER AREA - BY ROOM			LEVEL 3 - SPACE DRIVER AREA - BY ROOM			LEVEL 3 - SPACE DRIVER AREA - BY ROOM			LEVEL 3 - SPACE DRIVER AREA - BY ROOM		
NO	NAME	NET AREA	NO	NAME	NET AREA	NO	NAME	NET AREA	NO	NAME	NET AREA
CENTRALIZED STAFF LOCKER/LOUNGE/TOILETS											
A3108	STAFF ONLY RESTROOM	22 SF	B305	PUBLIC TOILET	51 SF	B343	DAYROOM	620 SF	C303	PATIENT ROOM	319 SF
A3109	RESTROOM	41 SF	B306	MEDICINE	112 SF	B344	GROUP/PARTISOR ROOM	190 SF	C314	CONFERENCE ROOM	190 SF
A3110	BREAKROOM	407 SF	B307	NURSE STATION	41 SF	B345	HEAD NURSE	120 SF	C315	NURSE	107 SF
A3111	RESTROOM	257 SF	B308	NOURISH	508 SF	B346	GRAB CART	21 SF	C316	NURSE STATION	609 SF
A3112	RESTROOM	47 SF	B309	CONFERENCE ROOM	262 SF	B347	HEAD NURSE	121 SF	C317	MEDICINE	118 SF
		126 SF	B310	PATIENT ROOM	111 SF	B348	GROUP/PARTISOR ROOM	180 SF	C318	CORRIDOR	41 SF
COMMON SPACE											
A3113	STAIR 1	159 SF	B311	RESTROOM	42 SF	B349	DAYROOM	750 SF	C319	RESTROOM	62 SF
A3114	STAIR 2	119 SF	B312	ISOLATION ROOM	109 SF	B350	STORAGE	39 SF	C320	RESTROOM	52 SF
A3115	STAIR 3	119 SF	B313	WHITE ROOM	18 SF	B351	STORAGE	41 SF	C321	STORAGE	54 SF
A3116	CORRIDOR	728 SF	B314	RESTROOM	44 SF	B352	PATIENT ROOM	236 SF	C322	EXAM/INTERVIEW	187 SF
A3117	ELEVATOR	180 SF	B315	DATA	8 SF	B353	PATIENT ROOM	210 SF	C323	DATA	14 SF
A3118	ELEVATOR	180 SF	B316	STORAGE	8 SF	B354	RESTROOM	59 SF	C324	ON-DECK CABIN	21 SF
A3119	ELEVATOR	82 SF	B317	STORAGE	7 SF	B355	PATIENT ROOM	210 SF	C325	ELEC. CLOSET	10 SF
A3120	ELEVATOR	129 SF	B318	ELECTRICAL CLOSET	10 SF	B356	PATIENT ROOM	210 SF			1624
A3121	STAIR	82 SF	B319	CLEAN LINEN	82 SF	B357	RESTROOM	58 SF			
A3122	STAIR	125 SF	B320	PATIENT ROOM	39 SF	B358	CLOSET	7 SF			
A3123	MECHANICAL	62 SF	B321	RESTROOM	41 SF	B359	RESTROOM	72 SF			
A3124	ELECTRICAL CLOSET	12 SF	B322	PATIENT ROOM	253 SF	B360	RESTROOM	61 SF			
A3125	ELECTRICAL CLOSET	8 SF	B323	RESTROOM	41 SF	B361	RESTROOM	61 SF			
A3126	STAIR 1	82 SF	B324	RESTROOM	43 SF	B362	RESTROOM	77 SF			
A3127	STAIR 2	82 SF	B325	PATIENT ROOM	253 SF	B363	CLOSET	7 SF			
A3128	STAIR 3	82 SF	B326	PATIENT ROOM	253 SF	B364	RESTROOM	61 SF			
		1186 SF	B327	RESTROOM	58 SF	B365	PATIENT ROOM	210 SF			
INFORMATION RESOURCE MGMT											
A3129	TRAIL CLOSET	35 SF	B328	CLOSET	7 SF	B366	PATIENT ROOM	253 SF			
		35 SF	B329	LAUNDRY	72 SF	B367	RESTROOM	61 SF			
MENTAL HEALTH CLINIC											
A3130	CORRIDOR	180 SF	B330	STORAGE	41 SF	B368	RESTROOM	61 SF			
A3131	CORRIDOR	180 SF	B331	RESTROOM	41 SF	B369	PATIENT ROOM	210 SF			
A3132	ISOLATION ROOM	44 SF	B332	PATIENT ROOM	44 SF	B370	RESTROOM	61 SF			
A3133	STORAGE	42 SF	B333	RESTROOM	57 SF	B371	CLEAN LINEN	41 SF			
A3134	HOUSEKEEPING	51 SF	B334	PATIENT ROOM	210 SF	B372	STORAGE	11 SF			
A3135	PATIENT ROOM	210 SF	B335	RESTROOM	57 SF	B373	STORAGE	11 SF			
A3136	EXAM/INTERVIEW	187 SF	B336	PATIENT ROOM	151 SF	B374	STORAGE	41 SF			
A3137	STORAGE	36 SF	B337	RESTROOM	45 SF	B375	STORAGE	41 SF			
A3138	CORRIDOR	82 SF	B338	STORAGE	41 SF	B376	STORAGE	41 SF			
A3139	STAFF RESTROOM	44 SF	B339	STORAGE	33 SF	B377	STORAGE	41 SF			

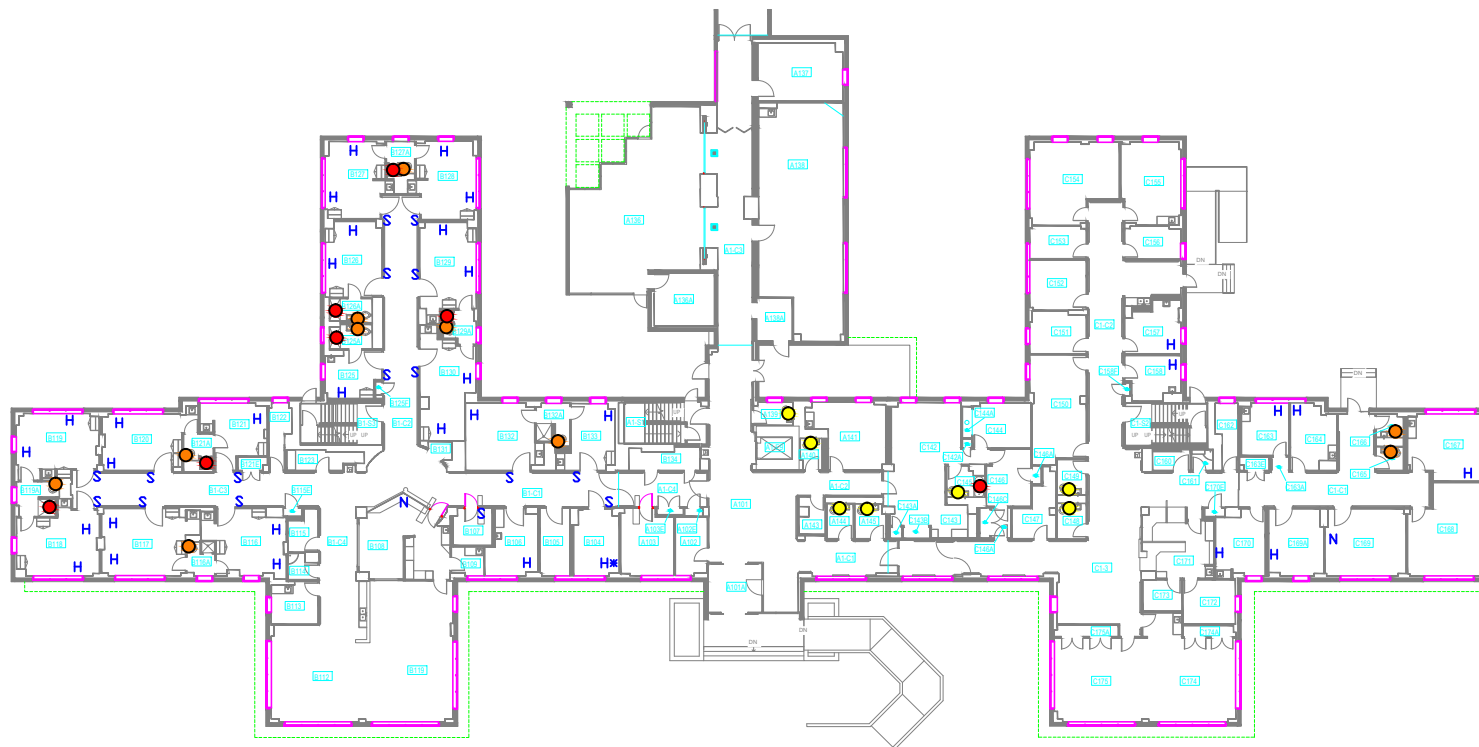


LEVEL 3 - OVERALL PLAN
3/32" = 1'-0"

No. Description Date 0 100% SUBMITTAL 01/21/2014	ARCHITECTS/ENGINEERS: Burns & McDonnell SINCE 1898 4400 West Parkway Kansas City, MO 64114 Phone: (816) 333-5900 Fax: (816) 333-2051 Web: www.burnsmcd.com	Building Key Plan: 	FACILITIES MANAGEMENT FLOOR PLAN DRAWINGS - FOR REFERENCE ONLY - NOT FOR CONSTRUCTION	 VA EASTERN KANSAS HEALTH CARE SYSTEM Dwight D. Eisenhower VA Medical Center, Leavenworth Colmery-O'Neil VA Medical Center, Topeka	Drawing Title: LEVEL 3 - OVERALL PLAN Scale: 3/32" = 1'-0" Approved:	Project Title: MENTAL HEALTH SERVICES Building Number: 2 Checked By: AS Drawn By: TC Location: Colmery-O'Neil VA Medical Center, Topeka	Date: 01/21/2014 Project No.: 74344 Drawing No.: AE131 Rev.: 01	Department of Veterans Affairs
---	--	-------------------------------	--	--	--	--	--	---------------------------------------

- LEGEND**
- CODE BLUE ACTUATOR
 - PULL-CORD LIGHT IN HALL, REMOTE ACTUATOR
 - WATER RESISTANT PULL-CORD
 - AUDIO PULL-CORD
 - H PT HEADWALL
 - S VoIP STAFF TERMINAL
 - N VoIP NURSE CONTROL
 - C REMOTE COMPUTER CONSOLE
 - H* ALL NURSE CALL DEVICES TO MEET MENTAL HEALTH STANDARDS

AE-LEVEL 1 SPACE DRIVER AREA - BY ROOM			AE-LEVEL 1 SPACE DRIVER AREA - BY ROOM			AE-LEVEL 1 SPACE DRIVER AREA - BY ROOM		
NO	NAME	NET AREA	NO	NAME	NET AREA	NO	NAME	NET AREA
A100	PRIMARY CARE	466 SF	B100	RECEPTION	110 SF	B200	RECEPTION	110 SF
A101	CORRIDOR	185 SF	B101	PATIENT ROOM	232 SF	B201	PATIENT ROOM	232 SF
A102	SUPPLIES	156 SF	B102	EQUIPMENT ROOM	85 SF	B202	PATIENT ROOM	180 SF
A103	WYCHALK CLOSET	137 SF	B103	WYCHALK CLOSET	75 SF	B203	PATIENT ROOM	48 SF
A104	EXAM ROOM	136 SF	B104	NURSE MANAGER	177 SF	B204	ELEC CLOSET	11 SF
A105	STAFF WORK ROOM	37 SF	B105	ELEC CLOSET	8 SF	B205	SOLID UTILITY	85 SF
A106	HOUSEKEEPING	23 SF	B106	CORRIDOR	50 SF	B206	PATIENT ROOM	120 SF
A107	HOUSEKEEPING	65 SF	B107	CORRIDOR	704 SF	B207	PATIENT ROOM	120 SF
A108	EXAM ROOM	129 SF	B108	CORRIDOR	142 SF	B208	RECEPTION	52 SF
A109	HOUSEKEEPING	12 SF	B109	CORRIDOR	148 SF	B209	RECEPTION	11 SF
A110	ELEC CLOSET	19 SF	B110	PATIENT ROOM	169 SF	B210	PATIENT ROOM	219 SF
A111	SOCIAL WORKER	143 SF	B111	MULTI-PURPOSE ROOM	105 SF	B211	RECEPTION	31 SF
A112	WOMEN	34 SF	B112	EXAM ROOM	189 SF	B212	PATIENT ROOM	240 SF
A113	STAFF RESTROOM	33 SF	B113	RECEPTION	23 SF	B213	RECEPTION	42 SF
A114	EXAM ROOM	274 SF	B114	NURSE'S STATION	34 SF	B214	PATIENT ROOM	240 SF
A115	CONFERENCE ROOM	283 SF	B115	RECEPTION	45 SF	B215	PATIENT ROOM	240 SF
A116	CARE MANAGER	200 SF	B116	TV ROOM	68 SF	B216	RECEPTION	50 SF
A117	WOMEN'S WAITING ROOM	187 SF	B117	HOUSEKEEPING	85 SF	B217	TV ROOM	270 SF
A118	EXAM ROOM	182 SF	B118	HOUSEKEEPING	34 SF	B218	PHONE ALLOWS	19 SF
A119	ELEC CLOSET	8 SF	B119	HANDOUT	97 SF	B219	CONFERENCE	252 SF
A120	WOMEN'S HEALTH RECEPTION	217 SF	B120	ELEC CLOSET	7 SF	B220	STORAGE	65 SF
A121	STORAGE	120 SF	B121	PATIENT ROOM	254 SF	B221	SOCIAL WORK OFFICE	160 SF
A122	STORAGE	63 SF	B122	RECEPTION	47 SF	B222	COMP. CASE CLOSET	18 SF
A123	GROUP ROOM	449 SF	B123	PATIENT ROOM	505 SF	B223	STORAGE	840 SF
A124	STORAGE	29 SF	B124	PATIENT ROOM	270 SF	B224	STORAGE	79 SF
A125	RECEPTION CLING	38 SF	B125	PATIENT ROOM	289 SF	B225	STORAGE	79 SF
A126	STORAGE	36 SF	B126	DAYROOM	616 SF			
		3840 SF						

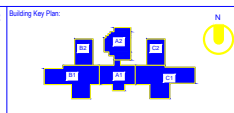


CENTRALIZED STAFF LOCKERS/LOUNGE/STOILETS		
A100	CORRIDOR	107 SF
A101	REST STAFF RESTROOM	47 SF
A102	STAFF RESTROOM	34 SF
A103	STAFF LOUNGE	230 SF
A104	UNIVERSAL WASTE STORAGE	45 SF
A105	MEN	48 SF
A106	WOMEN	54 SF
A107	STAFF ONLY	53 SF
		670 SF
COMMON SPACE		
A100	CORRIDOR	186 SF
A101	CORRIDOR	890 SF
A102	ELEVATOR	105 SF
A103	STAIR 1	172 SF
A104	LOBBY	522 SF
A105	VESTIBULE	144 SF
A106	BOULDER	865 SF
A107	ENGINEERING	165 SF
A108	STAIR 2	174 SF
A109	WORKING HEALTH CLINIC	1140 SF
A110	CORRIDOR	270 SF
A111	STAIR 3	170 SF
A112	ELEC CLOSET	11 SF
		5210 SF
HOSPITAL		
C100	HOSPITAL	416 SF
C101	CLOSET	4 SF
C102	WOMEN	71 SF
C103	WY CLOSET	17 SF
C104	LABORATORY	12 SF
C105	RECEPTION ROOM	135 SF
C106	CLOSET	14 SF
C107	RECEPTION ROOM	45 SF
C108	PATIENT ROOM	127 SF
C109	HALLWAY	30 SF
C110	CLOSET	11 SF
C111	NETWORK CLOSET	15 SF
		860 SF
MEDICAL SERVICES ADMINISTRATION		
C100	CONFERENCE	300 SF
		300 SF
RECREATIONAL THERAPY PROGRAM		
A100	RECREATION	972 SF
		972 SF
SOCIAL WORK PROGRAM		
C100	SOCIAL WORKER	120 SF
C101	DEFENDING CASE MANAGER	85 SF
C102	DEFENDING PROGRAM MANAGER	339 SF
C103	DEFENDING CASE MANAGER	250 SF
C104	DEFENDING NURSE	94 SF
C105	DEFENDING CASE MANAGER	110 SF
		919 SF
TENANT - VISIT		
A100	CONFERENCE ROOM	254 SF
		254 SF

LEVEL 1 - OVERALL PLAN
3/32" = 1'-0"

No.	Description	Date
0	100% SUBMITTAL	01/21/2014

ARCHITECTS/ENGINEERS:
Burns & McDonnell
SINCE 1898
2400 West Parkway
Kansas City, MO 64114
Phone: (816) 333-5400
Fax: (816) 333-2001
http://burnsmcd.com



FACILITIES MANAGEMENT
FLOOR PLAN DRAWINGS
- FOR REFERENCE ONLY -
NOT FOR CONSTRUCTION

VA EASTERN KANSAS HEALTH CARE SYSTEM
Dwight D. Eisenhower VA Medical Center, Leavenworth
Colmery-O'Neil VA Medical Center, Topeka

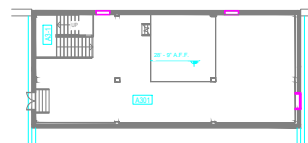
Drawing Title:
LEVEL 1 - OVERALL PLAN
Scale:
3/32" = 1'-0"
Approved:

Project Title:
**VA RTLS MENTAL HEALTH
SVC. GEROPSYCHIATRIC NURSING HOME**
Building Number:
4
Checked By:
AS
Drawn By:
TC
Location:
Colmery-O'Neil VA Medical Center, Topeka
Date:
01/21/2014
Project No.
74344
Drawing No.
AE111
By:
of

Department of Veterans Affairs

LEGEND

- CODE BLUE ACTUATOR
- PULL-CORD/LIGHT IN HALL, REMOTE ACTUATOR
- WATER RESISTANT PULL-CORD
- AUDIO PULL-CORD
- H PT HEADWALL
- S VoIP STAFF TERMINAL
- N VoIP NURSE CONTROL
- C REMOTE COMPUTER CONSOLE
- H* ALL NURSE CALL DEVICES TO MEET MENTAL HEALTH STANDARDS



Ⓢ PENTHOUSE - OVERALL PLAN
3/32" = 1'-0"

NO	NAME	NET AREA
COMMON SPACE		120 SF
A3.1 STAIR 1		130 SF
A301 MECHANICAL PENTHOUSE		1411 SF

AE-LEVEL 2 SPACE DRIVER AREA - BY ROOM	NO	NAME	NET AREA
1 CHASE	664 SF		
B100 HUBBY	664 SF		
A202 SUPPLY ROOM	96 SF		
A202E ELEC. CLOSET	7 SF		
A202E NURSE MANAGER	177 SF		
A202E ELEC. CLOSET	4 SF		
A204 FULL OXYGEN STORAGE	26 SF		
A204A EMPTY OXYGEN STORAGE	33 SF		
A206 STAFF RESTROOM	46 SF		
A207 STAFF RESTROOM	48 SF		
A208 BREAK ROOM	220 SF		
A209 OFFICE	127 SF		
A210 OFFICE	141 SF		
A211 STAFF RESTROOM	46 SF		
B2-01 CORRIDOR	471 SF		
B2-02 CORRIDOR	463 SF		
B2-03 CORRIDOR	541 SF		
B2-04 CORRIDOR	250 SF		
B004 STAFF LOBBY	186 SF		
B005 PATIENT ROOM	106 SF		
B006 HYDROTHERAPY	166 SF		
B007 MEDICINE	70 SF		
B008 NURSE STATION	474 SF		
B009 NURSING UNIT	52 SF		
B010 DINING ROOM	622 SF		
B012 DAY ROOM	659 SF		
B013 KITCHEN	101 SF		
B014 HOUSEKEEPING	49 SF		

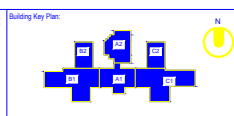
AE-LEVEL 2 SPACE DRIVER AREA - BY ROOM	NO	NAME	NET AREA
B015 HALLWAY	33 SF		
B016 ELEC. CLOSET	16 SF		
B016 PATIENT ROOM	260 SF		
B016A RESTROOM	40 SF		
B017 PATIENT ROOM	311 SF		
B018 PATIENT ROOM	274 SF		
B018A RESTROOM	72 SF		
B019 PATIENT ROOM	366 SF		
B020 PATIENT ROOM	253 SF		
B020A RESTROOM	47 SF		
B021 OFFICE	181 SF		
B021E ELEC. CLOSET	19 SF		
B022 SHELLED LINEN	66 SF		
B023 STORAGE	72 SF		
B025 CHANGING ROOM	130 SF		
B025A CHANGING RESTROOM	52 SF		
B025B PRE-CLINIC/CLINIC	3 SF		
B026 PATIENT ROOM	217 SF		
B026A RESTROOM	50 SF		
B027 PATIENT ROOM	219 SF		
B027A RESTROOM	45 SF		
B028 PATIENT ROOM	244 SF		
B029 PATIENT ROOM	262 SF		
B029A RESTROOM	51 SF		
B030 SOCIAL ROOM	284 SF		
B031 TELEPHONE ALCOVE	20 SF		
B032 PATIENT ROOM	293 SF		
B032A RESTROOM	65 SF		
B033 PATIENT ROOM	166 SF		
B033A CORRIDOR	429 SF		
B033C CORRIDOR	463 SF		
B033D CORRIDOR	540 SF		
B033E CORRIDOR	251 SF		
B035 STAFF PSYCHOLOGIST	162 SF		
B036A RESTROOM	68 SF		
B036B PATIENT ROOM	266 SF		
B037 EQUIPMENT	18 SF		
B038 RN OFFICE	270 SF		
B039 PATIENT ROOM	266 SF		
B039A RESTROOM	51 SF		
B040 PATIENT ROOM	250 SF		
B040A RESTROOM	49 SF		
B041 PATIENT ROOM	254 SF		
B042A RESTROOM	49 SF		
B043 PATIENT ROOM	131 SF		
B043A RESTROOM	51 SF		
B043B PRE-CLOSET	3 SF		
B043C PATIENT ROOM	253 SF		
B045 MEN & OXYGEN STORAGE	78 SF		
B046 MEN & OXYGEN STORAGE	66 SF		
B047 PATIENT ROOM	188 SF		
B047A RESTROOM	53 SF		
B048 ELEC. CLOSET	16 SF		
B049 PATIENT ROOM	240 SF		
B050 PATIENT ROOM	263 SF		
B051 PATIENT ROOM	275 SF		
B052 PATIENT ROOM	304 SF		
B053 PATIENT ROOM	471 SF		
B054 PATIENT ROOM	265 SF		
B055 ELEC. CLOSET	8 SF		
B056 PATIENT CLINIC	82 SF		
B057 HOUSEKEEPING	46 SF		
B058 NURSE MANAGER	102 SF		
B059 DINING ROOM	617 SF		
B060 LIVING ROOM	671 SF		
B061 NURSES STATION	487 SF		
B062 MEDICINE	75 SF		
B063 KITCHEN	70 SF		
B064 NETWORK CLOSET	25 SF		
B065 CONFERENCE	213 SF		
B066 SOCIAL WORK OFFICE	137 SF		
COMMON SPACE		11719 SF	

COMMON SPACE	NO	NAME	NET AREA
A2-01 RESTROOM	120 SF		
A2-02 STAIR 1	177 SF		
A2-03 STAIR 1	129 SF		
A2-04 PATIENT LOBBY	164 SF		
A2-05 ELEC. CLOSET	7 SF		
A301 MECHANICAL PENTHOUSE	1340 SF		
B5-01 STAIR 1	141 SF		
B5-02 STAIR 1	2786 SF		
COMMON SPACE		20628 SF	

Ⓢ LEVEL 2 - OVERALL PLAN
3/32" = 1'-0"

No.	Description	Date
0	100% SUBMITTAL	01/21/2014

ARCHITECTS/ENGINEERS:
Burns & McDonnell
SINCE 1898
3400 West Parkway
Kansas City, MO 64114
Phone: (816) 335-5900
Fax: (816) 335-2851
http://burnsmcdonnell.com



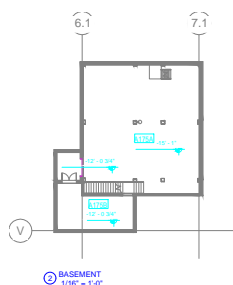
FACILITIES MANAGEMENT
FLOOR PLAN DRAWINGS
- FOR REFERENCE ONLY -
NOT FOR CONSTRUCTION

VA EASTERN KANSAS HEALTH CARE SYSTEM
Dwight D. Eisenhower VA Medical Center, Leavenworth
Colmery-O'Neil VA Medical Center, Topeka

Drawing Title: **LEVEL 2 - OVERALL PLAN**
Scale: 3/32" = 1'-0"

Project Title: **VA RTLS/MENTAL HEALTH SVCS. GEROPSYCHIATRIC NURSING HOME**
Date: 01/21/2014
Project No.: 74344
Building Number: 4
Checked By: AS
Drawn By: TC
Location: Colmery-O'Neil VA Medical Center, Topeka
Drawing No.: **AE121**
Date: 01/21/2014

Department of Veterans Affairs



AE-BASEMENT SPACE DRIVER AREA - BY ROOM		
NO	NAME	NET AREA
COMMON SPACE		
A175A	MECHANICAL	1766 SF
A175B	ELECTRICAL	344 SF
B125	STAFF ONLY	Not Placed
		2110 SF

BASEMENT
1/16" = 1'-0"

LEGEND

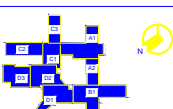
- CODE BLUE ACTUATOR
- PULL-CORD(LIGHT IN HALL, REMOTE ACTUATOR)
- WATER RESISTANT PULL-CORD
- AUDIO PULL-CORD
- PT HEADWALL
- VoIP STAFF TERMINAL
- VoIP NURSE CONTROL
- REMOTE COMPUTER CONSOLE
- ALL NURSE CALL DEVICES TO MEET MENTAL HEALTH STANDARDS

LEVEL 1 - OVERALL PLAN
1/16" = 1'-0"

No.	Description	Date
0	100% SUBMITTAL	01/21/2014

ARCHITECTS/ENGINEERS:
Burns & McDonnell
SINCE 1898
2400 West Parkway
Leavenworth, KS 66041
Phone: (816) 335-5900
Fax: (816) 335-2051
http://burnsmcdonnell.com

Building Key Plan:



FACILITIES MANAGEMENT
FLOOR PLAN DRAWINGS
- FOR REFERENCE ONLY -
NOT FOR CONSTRUCTION



VA EASTERN KANSAS HEALTH CARE SYSTEM

Dwight D. Eisenhower VA Medical Center, Leavenworth
Colmery-O'Neil VA Medical Center, Topeka

Drawing Title:
LEVEL 1 & BASEMENT -OVERALL PLAN
Scale:
1/16" = 1'-0"
Approved:

VA RTLS COMMUNITY LIVING CENTER
Building Number:
6
Checked By:
AS
Drawn By:
TC
Location:
Colmery-O'Neil VA Medical Center, Topeka

Date:
01/21/2014
Project No.
74344
Drawing No.
AE111
By:
or

Department of
Veterans Affairs

AE-LEVEL 1 SPACE DRIVER AREA - BY ROOM		
NO	NAME	NET AREA
CENTRALIZED STAFF LOUNGES/LOCKER/TOILETS		
A102	WOMEN	28.5
A103	MEN'S STAFF RESTROOM	49.9
A104	WOMEN'S STAFF RESTROOM	26.3
A175B	RESTROOM	132.0
A176	HOUSEKEEPING	131.0
A176A	WOMEN'S LOCKER ROOM	405.5
A177	MEN'S LOCKER ROOM	251.5
A177B	RESTROOM	107.5
A180	MEN	28.5
B110	WOMEN STAFF RESTROOM	220.5
B118	WOMEN STAFF RESTROOM	54.5

COMMON SPACE		
A1-1	CORRIDOR	2715
A1-2	CORRIDOR	530
A1-3	CORRIDOR	385
A1-12	CORRIDOR	458
A100	ENTRY	284
A191	LOBBY	450
A196	ELEC. CLOSET	14
A19F	FIRE CLOSET	2
A195	ENGINEERING SERVICE	8.5
A175A	STAIR 1	76
A179	HOUSEKEEPING	35
B1-4	CORRIDOR	1482
B119P	PHASE	27
B129P	PHASE	44
C129P	PHASE	28
		1482

DIRECTOR'S SUITE			4107 S
A108	SUPPLY ROOM	118 S	
A108A	STORAGE	246 S	
B108C	PATIENT TRANSFER COORD.	161 S	
B109	PALLIATIVE CARE COORD	123 S	
B112	PROGRAM SUPPORT ASSIST	260 S	
B112A	GENS COORDINATOR	246 S	
B112B	SAFETY & EMERGENCY MGMT	239 S	
B112C	OSH MANAGER	248 S	
B113	OFFICE	123 S	
B114	OFFICE	123 S	
B115	OFFICE	121 S	
B117	STORAGE	102 S	
			2108 S

ENGINEERING SERVICE		729.5
A107	PROJECTS OFFICE	729.5
B1-3	CORRIDOR	467.5
B119	ELEC. CLOSET	29.5
B120	STORAGE	92.5
B121	ENGINEERING ADMINISTRATION	295.5
B122	PROGRAM ANALYST	297.5
B123	ENGINEERING	281.5
B123A	ENGINEERING SERVICE MANAGER	291.5
B123B	ENGINEERING SERVICE CHIEF	286.5
B123C	CHIEF ENG. ASSISTANT	282.5
B124	ENGINEERING SERVICE	327.5
B130	STORAGE	312.5
B133	STORAGE	54.5

ENVIRONMENTAL MANAGEMENT SERVICE		3742 SF
A101A	UNIVERSAL WASTE STORAGE	14 SF
		14 SF
IN-PATIENT COMMUNITY LIVING CENTER (CLC)		

Floor plan diagram showing two rooms labeled B112A and B112B. To the left of the rooms is a vertical stack of three yellow circles, with the word "STORAGE" written below them. The rooms are connected by a horizontal line, and there are various mechanical and structural symbols throughout the plan.

1111P	1114
1111	1112
1112	1112

AE-LEVEL 1 SPACE DRIVER AREA - BY ROOM		
NO	NAME	NET AREA
AE100A	MECHANICAL	1792 SF
AE100B	ELECTRICAL	344 SF
B100	STAFF ONLY	Not Placed
		2110 SF

HEALTH SYSTEM	Drawing Title: LEVEL 1 & B -OVERALL
	Scale: 1/16" = 1'-0"

AE-LEVEL 1 SPACE DRIVER AREA - BY ROOM		
NO	NAME	NET AREA
A1-7	CORRIDOR	43
A1-8	CORRIDOR	38
A1-38	CLEAN STORAGE	35
A1-39	DINING/ACTIVITY	140
A1-39A	HOUSEKEEPING	3
A1-40M	MECHANICAL	36
A1-41	NURSE PRACTITIONER	12
A1-42	STAFF BREAKROOM	13
A1-43	REPORT ROOM	12
A1-44	CHART ROOM	13
A1-70	SHOWER	11
A1-70A	TUB ROOM	12
A1-70R	RESTROOM	14

AE100A	MECHANICAL	1792 SF
AE100B	ELECTRICAL	344 SF
B100	STAFF ONLY	Not Placed
		2110 SF
AE100	STAFF ONLY	Not Placed
		2110 SF
AE100	STAFF ONLY	Not Placed
		2110 SF
AE100	STAFF ONLY	Not Placed
		2110 SF
AE100	STAFF ONLY	Not Placed
		2110 SF
AE100	STAFF ONLY	Not Placed
		2110 SF
AE100	STAFF ONLY	Not Placed
		2110 SF
AE100	STAFF ONLY	Not Placed
		2110 SF
AE100	STAFF ONLY	Not Placed
		2110 SF
AE100	STAFF ONLY	Not Placed
		2110 SF
AE100	STAFF ONLY	Not Placed
		2110 SF
AE100	STAFF ONLY	Not Placed
		2110 SF
AE100	STAFF ONLY	Not Placed
		2110 SF
AE100	STAFF ONLY	Not Placed
		2110 SF
AE100	STAFF ONLY	Not Placed
		2110 SF
AE100	STAFF ONLY	Not Placed
		2110 SF
AE100	STAFF ONLY	Not Placed
		2110 SF
AE100	STAFF ONLY	Not Placed
		2110 SF
AE100	STAFF ONLY	Not Placed
		2110 SF
AE100	STAFF ONLY	Not Placed
		2110 SF
AE100	STAFF ONLY	Not Placed
		2110 SF
AE100	STAFF ONLY	Not Placed
		2110 SF
AE100	STAFF ONLY	Not Placed
		2110 SF
AE100	STAFF ONLY	Not Placed
		2110 SF
AE100	STAFF ONLY	Not Placed
		2110 SF
AE100	STAFF ONLY	Not Placed
		2110 SF
AE100	STAFF ONLY	Not Placed
		2110 SF
AE100	STAFF ONLY	Not Placed
		2110 SF
AE100	STAFF ONLY	Not Placed
		2110 SF
AE100	STAFF ONLY	Not Placed
		2110 SF
AE100	STAFF ONLY	Not Placed
		2110 SF
AE100	STAFF ONLY	Not Placed
		2110 SF
AE100	STAFF ONLY	Not Placed
		2110 SF
AE100	STAFF ONLY	Not Placed
		2110 SF
AE100	STAFF ONLY	Not Placed
		2110 SF
AE100	STAFF ONLY	Not Placed
		2110 SF
AE100	STAFF ONLY	Not Placed
		2110 SF
AE100	STAFF ONLY	Not Placed
		2110 SF
AE100	STAFF ONLY	Not Placed
		2110 SF
AE100	STAFF ONLY	Not Placed
		2110 SF
AE100	STAFF ONLY	Not Placed
		2110 SF
AE100	STAFF ONLY	Not Placed
		2110 SF
AE100	STAFF ONLY	Not Placed
		2110 SF
AE100	STAFF ONLY	Not Placed
		2110 SF
AE100	STAFF ONLY	Not Placed
		2110 SF
AE100	STAFF ONLY	Not Placed
		2110 SF
AE100	STAFF ONLY	Not Placed
		2110 SF
AE100	STAFF ONLY	Not Placed
		2110 SF
AE100	STAFF ONLY	Not Placed
		2110 SF
AE100	STAFF ONLY	Not Placed
		2110 SF
AE100	STAFF ONLY	Not Placed
		2110 SF
AE100	STAFF ONLY	Not Placed
		2110 SF
AE100	STAFF ONLY	Not Placed
		2110 SF
AE100	STAFF ONLY	Not Placed
		2110 SF
AE100	STAFF ONLY	Not Placed
		2110 SF
AE100	STAFF ONLY	Not Placed
		2110 SF
AE100	STAFF ONLY	Not Placed
		2110 SF
AE100	STAFF ONLY	Not Placed
		2110 SF
AE100	STAFF ONLY	Not Placed
		2110 SF
AE100	STAFF ONLY	Not Placed
		2110 SF
AE100	STAFF ONLY	Not Placed
		2110 SF
AE100	STAFF ONLY	Not Placed
		2110 SF
AE100	STAFF ONLY	Not Placed
		2110 SF
AE100	STAFF ONLY	Not Placed
		2110 SF
AE100	STAFF ONLY	Not Placed
		2110 SF
AE100	STAFF ONLY	Not Placed
		2110 SF
AE100	STAFF ONLY	Not Placed
		2110 SF
AE100	STAFF ONLY	Not Placed
		2110 SF
AE100	STAFF ONLY	Not Placed
		2110 SF
AE100	STAFF ONLY	Not Placed
		2110 SF
AE100	STAFF ONLY	Not Placed
		2110 SF
AE100	STAFF ONLY	Not Placed
		2110 SF
AE100	STAFF ONLY	Not Placed
		2110 SF
AE100	STAFF ONLY	Not Placed
		2110 SF
AE100	STAFF ONLY	Not Placed
		2110 SF
AE100	STAFF ONLY	Not Placed
		2110 SF
AE100	STAFF ONLY	Not Placed
		2110 SF
AE100	STAFF ONLY	Not Placed
		2110 SF
AE100	STAFF ONLY	Not Placed
		2110 SF
AE100	STAFF ONLY	Not Placed
		2110 SF
AE100	STAFF ONLY	Not Placed
		2110 SF
AE100	STAFF ONLY	Not Placed
		2110 SF
AE100	STAFF ONLY	Not Placed
		2110 SF
AE100	STAFF ONLY	Not Placed
		2110 SF
AE100	STAFF ONLY	Not Placed
		2110 SF
AE100	STAFF ONLY	Not Placed
		2110 SF
AE100	STAFF ONLY	Not Placed
		2110 SF
AE100	STAFF ONLY	Not Placed
		2110 SF
AE100	STAFF ONLY	Not Placed
		2110 SF
AE100	STAFF ONLY	Not Placed
		2110 SF
AE100	STAFF ONLY	Not Placed
		2110 SF
AE100	STAFF ONLY	Not Placed
		2110 SF
AE100	STAFF ONLY	Not Placed
		2110 SF
AE100	STAFF ONLY	Not Placed
		2110 SF
AE100	STAFF ONLY	Not Placed
		2110 SF
AE100	STAFF ONLY	Not Placed
		2110 SF
AE100	STAFF ONLY	Not Placed
		2110 SF
AE100	STAFF ONLY	Not Placed
		2110 SF
AE100	STAFF ONLY	Not Placed
		2110 SF
AE100	STAFF ONLY	Not Placed
		2110 SF
AE100	STAFF ONLY	Not Placed
		2110 SF
AE100	STAFF ONLY	Not Placed
		2110 SF
AE100	STAFF ONLY	Not Placed
		2110 SF
AE100	STAFF ONLY	Not Placed
		2110 SF
AE100	STAFF ONLY	Not Placed
		2110 SF
AE100	STAFF ONLY	Not Placed
		2110 SF
AE100	STAFF ONLY	Not Placed
		2110 SF
AE100	STAFF ONLY	Not Placed
		2110 SF
AE100	STAFF ONLY	Not Placed
		2110 SF
AE100	STAFF ONLY	Not Placed
		2110 SF
AE100	STAFF ONLY	Not Placed
		2110 SF
AE100	STAFF ONLY	Not Placed
		2110 SF
AE100	STAFF ONLY	Not Placed
		2110 SF
AE100	STAFF ONLY	Not Placed
		2110 SF
AE100	STAFF ONLY	Not Placed
		2110 SF
AE100	STAFF ONLY	Not Placed
		2110 SF
AE100	STAFF ONLY	Not Placed
		2110 SF
AE100	STAFF ONLY	Not Placed
		2110 SF
AE100	STAFF ONLY	Not Placed
		2110 SF
AE100	STAFF ONLY	Not Placed
		2110 SF
AE100	STAFF ONLY	Not Placed
		2110 SF
AE100	STAFF ONLY	Not Placed
		2110 SF
AE100	STAFF ONLY	Not Placed
		2110 SF
AE100	STAFF ONLY	Not Placed
		2110 SF
AE100	STAFF ONLY	Not Placed
		211

	C152	W/IN	19
	C152A	RESTROOM	4
	C154	RESIDENT ROOM	30
	C155	RESIDENT ROOM	28
	C155A	RESIDENT ROOM	29
	C155B	RESIDENT ROOM	28
	C155C	RESIDENT ROOM	28
	C156	RESIDENT ROOM	29
	C156A	MEN	5
	C157	RESIDENT ROOM	29
	C158	CLEAN LINEN	9
	C159	ELEC. CLOSET	3
	C160	STAFF ONLY	5
	C161	LAUNDRY	10
	C162	RESIDENT ROOM	13

C163	RESIDENT ROOM	12
C164	RESIDENT ROOM	11
C165	MEN	6
C166	RESIDENT ROOM	23
C166A	RESIDENT ROOM	24
C166B	RESIDENT ROOM	24
C166C	RESIDENT ROOM	25
C166D	CHASE	2
C167	MEN	23
C169	RESIDENT ROOM	12
C169F	FIRE CLOSET	
C170A	ALDOVE	3
C170B	MEDICATION	12
C170C	STORAGE	13

	C170D	RESIDENT ROOM	15
	C170E	ELEC. CLOSET	5
PF	C181	MECHANICAL	13
PF	C182	RESIDENT ROOM	16
	C182A	LINEN STORAGE	5
	C182B	RESTROOM	8
	C183	RESIDENT ROOM	17
	C184	RESIDENT ROOM	16
	C184A	RESTROOM	8
	C185	RESIDENT ROOM	16
	C185A	RESTROOM	8
	C186	STORAGE	5
	C187	RESIDENT ROOM	16
	C187A	RESTROOM	8

C188	RESIDENT ROOM	10
C188A	RESTROOM	8
C189	HOUSEKEEPING	2
D101	RESTROOM	7
D102	RESIDENT ROOM	21
D103	PANTRY	1
D104	BATHING SUITE	19
D105	MEDICINE	6
D106	SOILED LINEN	6
D107	CLEAN LINEN	6
D108	NURSE WARD	27
D109	DEN	23
D110	STORAGE	2
D111	KITCHEN	16

D112	LIVING	39
D113	LIVING	57
D114	BAR/ATRIC BEDROOM	41
D115	EXAM	9
D121	CORRIDOR	26
D126	CORRIDOR	9
D127	RESIDENT ROOM	21
D128	RESIDENT ROOM	21
D129	RESTROOM	7
D130	RESTROOM	7
D131	RESIDENT ROOM	20
D132	RESIDENT ROOM	21
D133	RESTROOM	7
D134	RESTROOM	7

D135	RESIDENT ROOM	21
D136	RESTROOM	7
D137	RESTROOM	7
D138	RESIDENT ROOM	21

BASEMENT FLOOR PLAN	Project Title: VARTLSC LIVING
	Building Number: 6

ROOM	AE-LEVEL 1 SPACE DRIVER AREA - BY ROOM		
AREA	NO	NAME	NET AREA
208 SF	D139	RESIDENT ROOM	208 SF
51 SF	D140	STAFF RESTROOM	51 SF
73 SF	D141	RESTROOM	73 SF
215 SF	D142	RESIDENT ROOM	215 SF
73 SF	D143	RESTROOM	73 SF
73 SF	D144	RESTROOM	73 SF
215 SF	D145	RESIDENT ROOM	215 SF
213 SF	D146	RESIDENT ROOM	213 SF
73 SF	D147	RESTROOM	73 SF
128 SF	D148	RESTROOM	128 SF
563 SF	D149	MECHANICAL	563 SF
475 SF	D150	CORRIDOR	475 SF
64 SF	D151	MECHANICAL	64 SF

5 SF	D102 COVER	401 SF
5 SF	D103 CONFERENCE	334 SF
7 SF	D104 MAINTENANCE STORAGE	226 SF
3 SF	D105 CLOSET	30 SF
7 SF	D106 MAINTENANCE OFFICE	147 SF
7 SF	D107 HOUSEKEEPING OFFICE	131 SF
7 SF	D108 STRETCHER STORAGE	139 SF
4 SF	D109 HOUSEKEEPING STORAGE	97 SF
4 SF	D100 CLOSET	11 SF
19 SF	D101 BARBER	156 SF
4 SF	D102 MEDIA	177 SF
4 SF	D103 RECEIVING MAIL	143 SF
5 SF	D104 OFFICE	129 SF
13 SF	D105 NURSING RECORDS	194 SF
5 SF	D106 CLOSET	51 SF
2 SF	D107 CLOSET	8 SF

1 SF	D166	WOMEN	76 SF
1 SF	D165	WOMEN	74 SF
1 SF	D171	MEDICAL STORAGE	113 SF
1 SF	D172	ELEC CLOSET	83 SF
2 SF	D173	ADMINISTRATION	175 SF
2 SF	D174	GARDEN CLOSET	15 SF
4 SF	D177	CORRIDOR	1452 SF
3 SF	D178	ENTRY CORRIDOR	433 SF
4 SF	D179	IT CLOSET	116 SF
2 SF	D180	JANITOR	20 SF
2 SF	D181	GRC OFFICE	404 SF
6 SF	D182	RESTROOM	56 SF
12 SF	D183	RESTRO	167 SF
1 SF	D184	FAMILY GATHERING	446 SF
1 SF	D185	21 ONET	29 SF

8 SF	D186	MEAL CART CLOSET	95 SF
8 SF	D187	ACTIVITIES DIRECTOR	109 SF
8 SF	D188	NURSE MANAGER	123 SF
8 SF	D189	OFFICE	181 SF
4 SF	D190	EMPLOYEE LOUNGE	223 SF
3 SF	D191	MEDITATION	218 SF
3 SF	D192	NURSE PRACTITIONER	129 SF
7 SF	D193	CORRIDOR	140 SF
8 SF	D194	CORRIDOR	80 SF
8 SF	D195	CORRIDOR	1305 SF
6 SF	D196	CORRIDOR	362 SF
6 SF	D197	LAUNDRY	44 SF
			32486 SF
9 SF	MEDICAL SERVICE ADMINISTRATION		

3 SF	A130 MEDICAL DIRECTOR	126 SF
14 SF	A137 NDS COORDINATOR	132 SF
0 SF		260 SF
3 SF	NURSING SERVICE ADMINISTRATION	
6 SF	A105 NURSE MANAGER	126 SF
3 SF	A106A CLOSET	19 SF
1 SF		145 SF
3 SF	NUTRITION/FOOD SERVICE	
3 SF	A134 DIETICIAN	137 SF
4 SF		137 SF
3 SF	PHARMACY SERVICE	
3 SF	B116 CLINICAL PHARMACIST	123 SF
3 SF		123 SF
3 SF	RECREATIONAL THERPEY PROGRAM	

3 SF	A178 RECREATIONAL THERAPY	311 SF
3 SF	A178A STORAGE	108 SF
3 SF		419 SF
3 SF	ROBAP MEDICINE PROGRAM	
6 SF	B126 RESTROOM	247 SF
3 SF	B127 STORAGE	43 SF
6 SF	B128 KITCHEN	32 SF
3 SF	B129 PHYSICAL THERAPY	1509 SF
3 SF	B129A STORAGE	48 SF
3 SF		1937 SF
3 SF	SOCIAL WORK PROGRAM	
3 SF	A135 SOCIAL WORKER	126 SF
3 SF	B108B OFFICE	315 SF
3 SF	B108C ELEC. CLOSET	16 SF

5 SF	B100F FIRE CLOSET	3 SF
5 SF		454 SF
0 SF		
1 SF		
1 SF		
0 SF		
0 SF		
0 SF		
3 SF		
3 SF		
0 SF		
0 SF		
3 SF		
3 SF		

COMMUNITY CENTER		Date: 01/21/2014	Department of Veterans Affairs
		Project No. 74344	
Checked By: AS	Drawn By: TC	Drawing No. AE111	