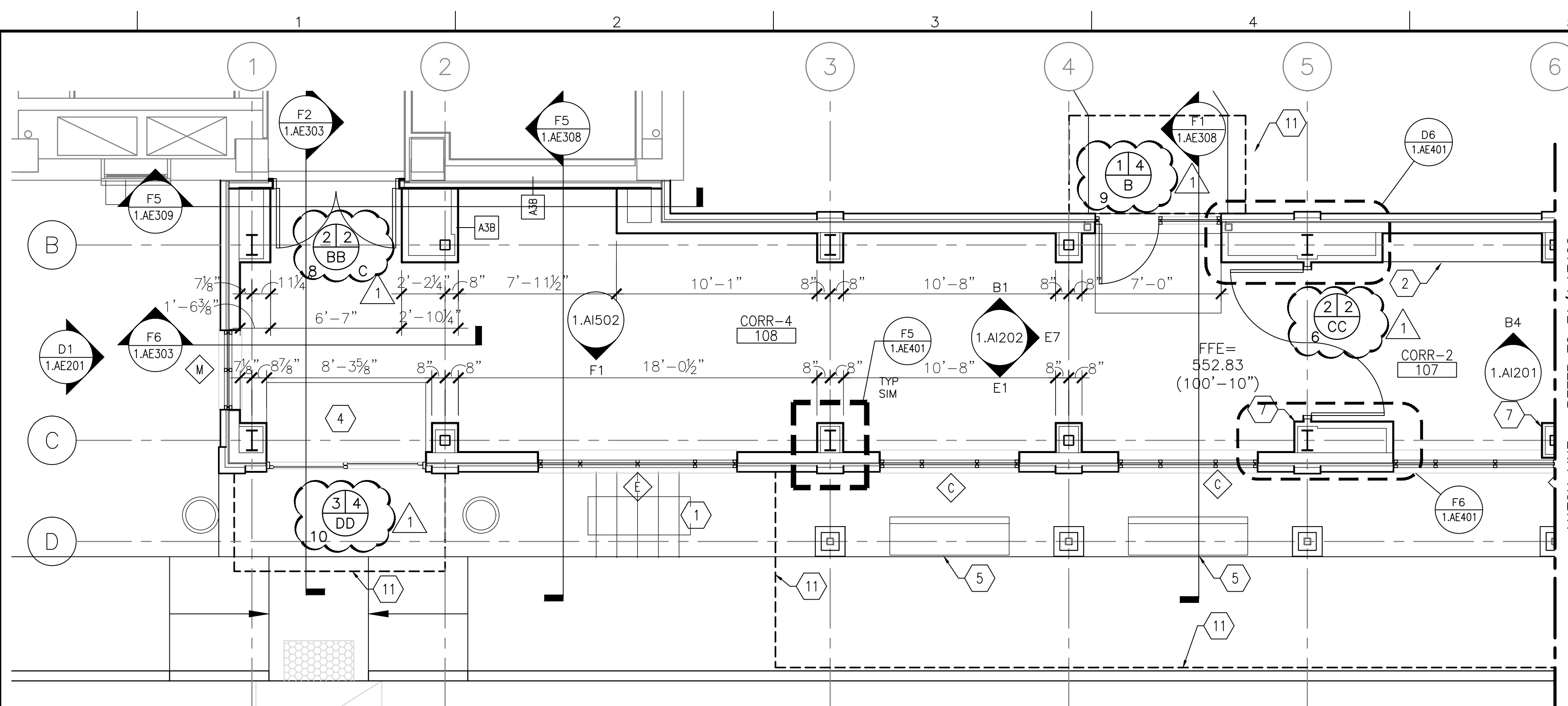
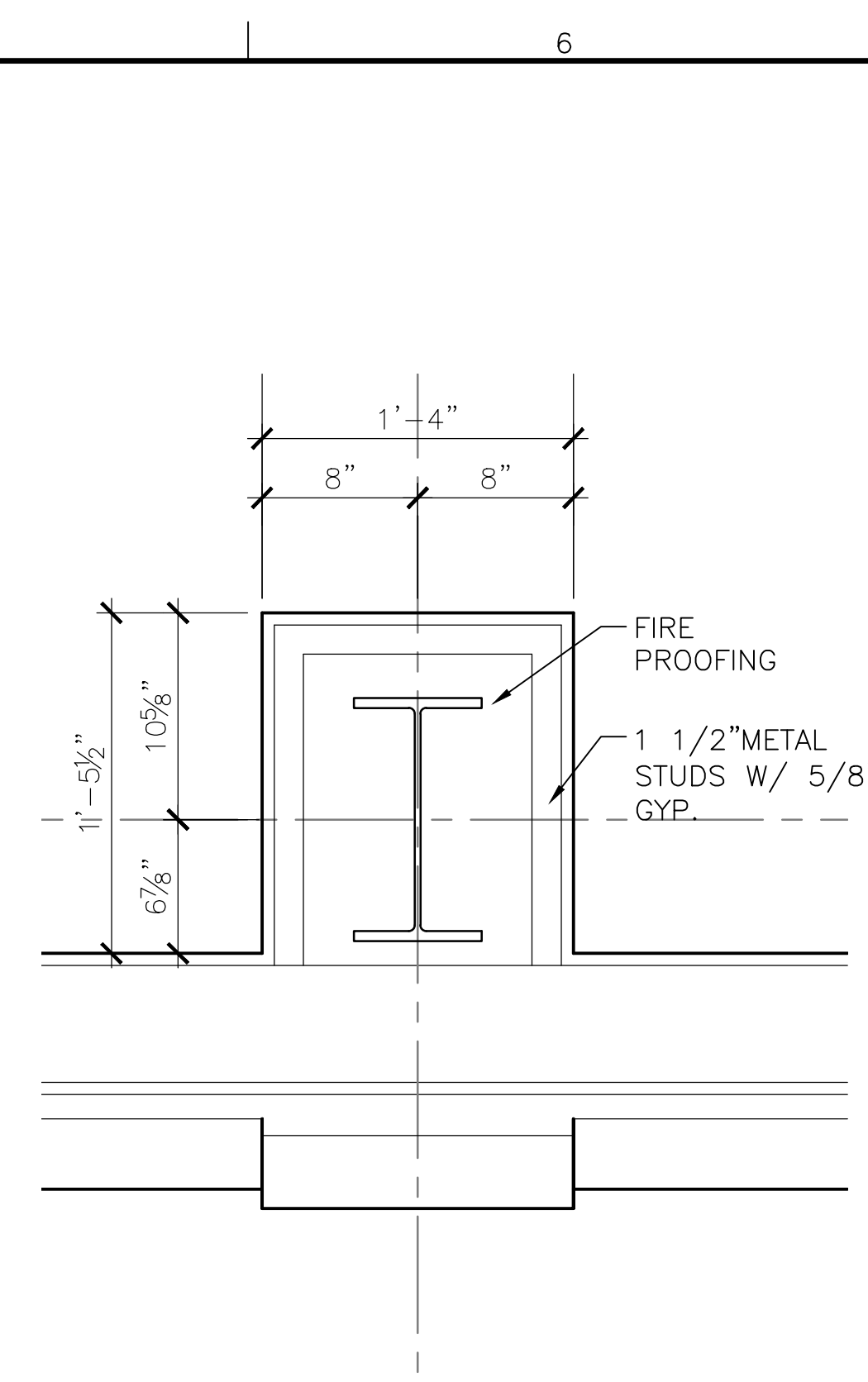


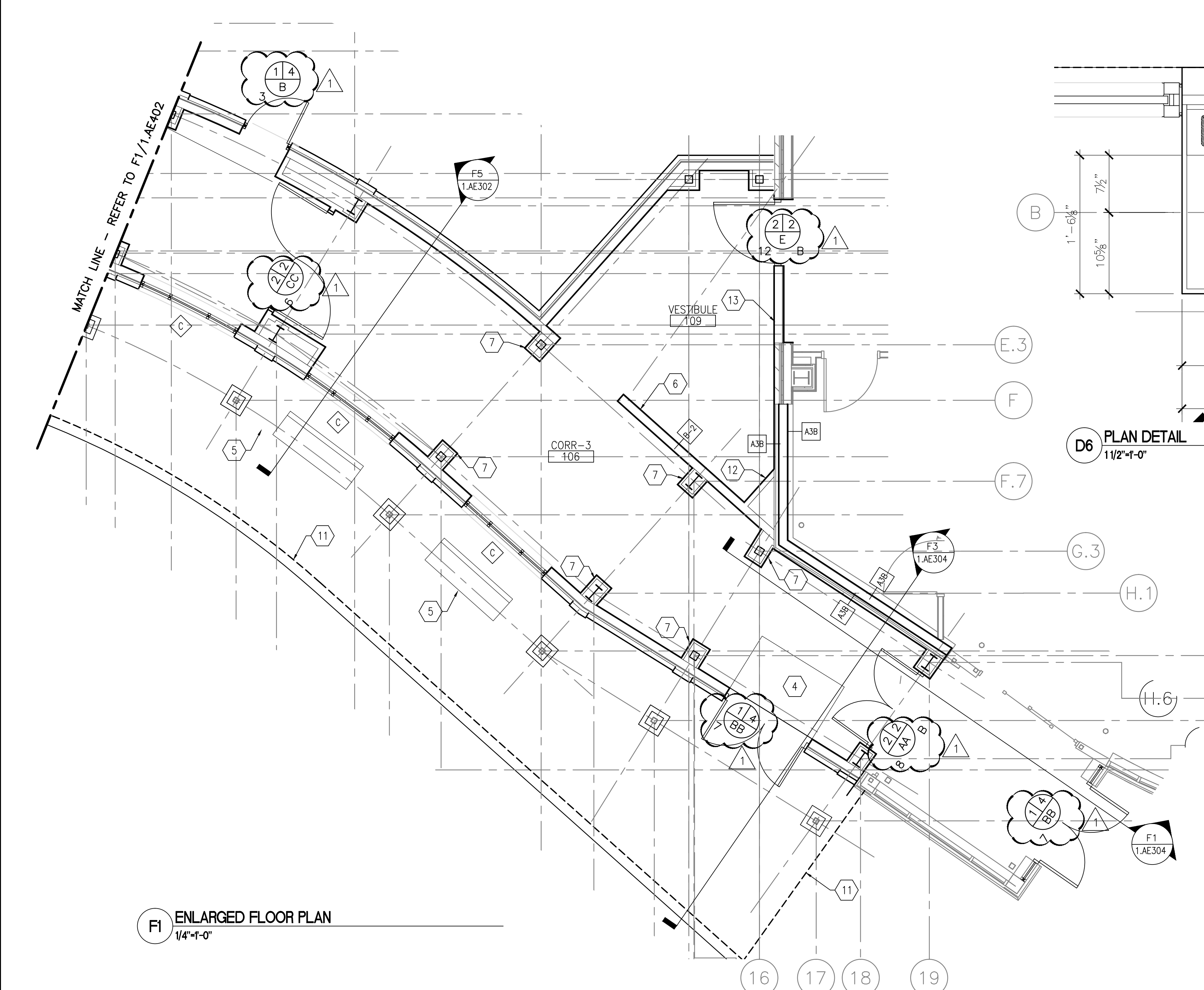
three inches = one foot
one and one half inches = one foot
one inch = one foot
three quarters inch = one foot
one half inch = one foot
three eighths inch = one foot
one quarter inch = one foot
one eighth inch = one foot



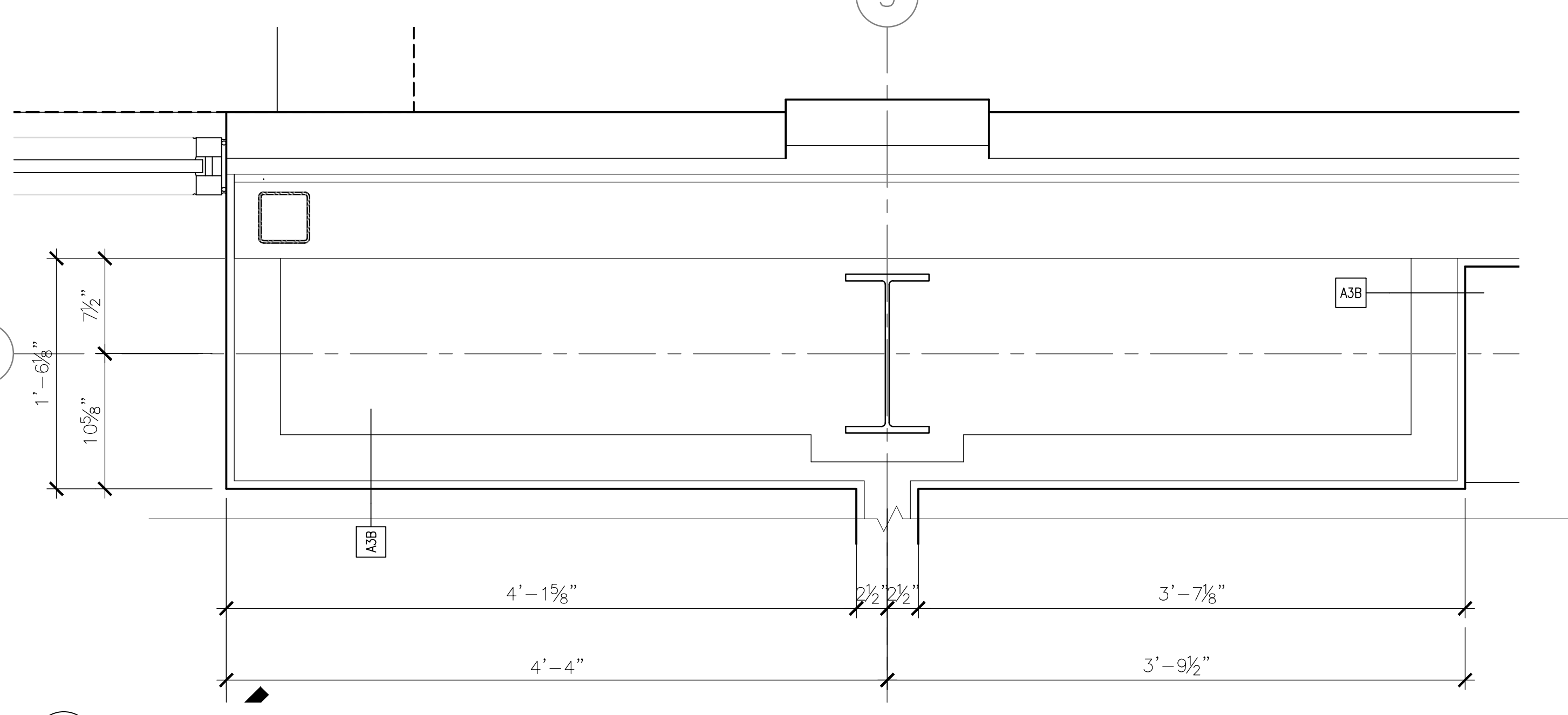
B1 ENLARGED FLOOR PLAN
1/4"=1'-0"



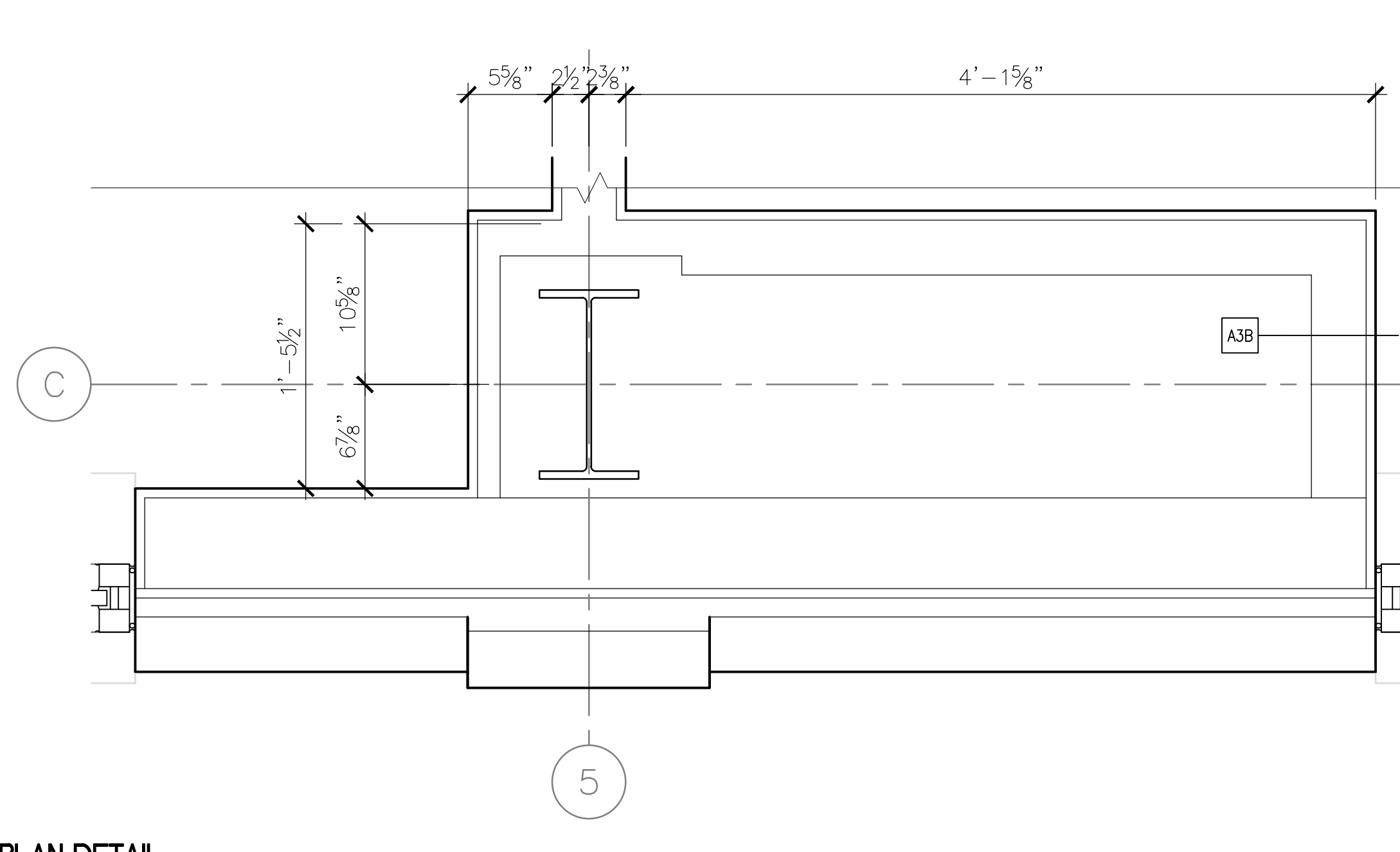
B5 TYPICAL COLUMN SURROUND DETAIL
1 1/2"=1'-0"



F1 ENLARGED FLOOR PLAN
1/4"=1'-0"



D6 PLAN DETAIL
1 1/2"=1'-0"



F6 PLAN DETAIL
1 1/2"=1'-0"

WALL LEGEND

- A-1 3 5/8" MTL STUD WALL STUDS @ 16" O.C. W/ (1) LAYER OF 5/8" GYP BOTH SIDES, 4" ABOVE CEILING
- A-2 3 5/8" MTL STUD WALL STUDS @ 16" O.C. W/ 4" BATT INSULATION, (1) LAYER OF 5/8" GYP BOTH SIDES.
- A-3 1 HOUR FIRERATED - 3 5/8" MTL STUD WALL STUDS @ 16" O.C. W/ 6" BATT INSULATION, (1) LAYER OF TYPE X GYP BOTH SIDES, TO DECK.
- A3B 3 5/8" MTL STUD WALL STUDS @ 16" O.C. W/ 5/8" GYP ONE SIDE.
- B-1 6" MTL STUD WALL STUDS @ 16" O.C. W/ 6" BATT INSULATION, (1) LAYER OF 5/8" GYP BOTH SIDES, 4" ABOVE CEILING
- B-2 6" MTL STUD WALL STUDS @ 16" O.C. W/ (1) LAYER OF 5/8" GYP BOTH SIDES.

NOTES

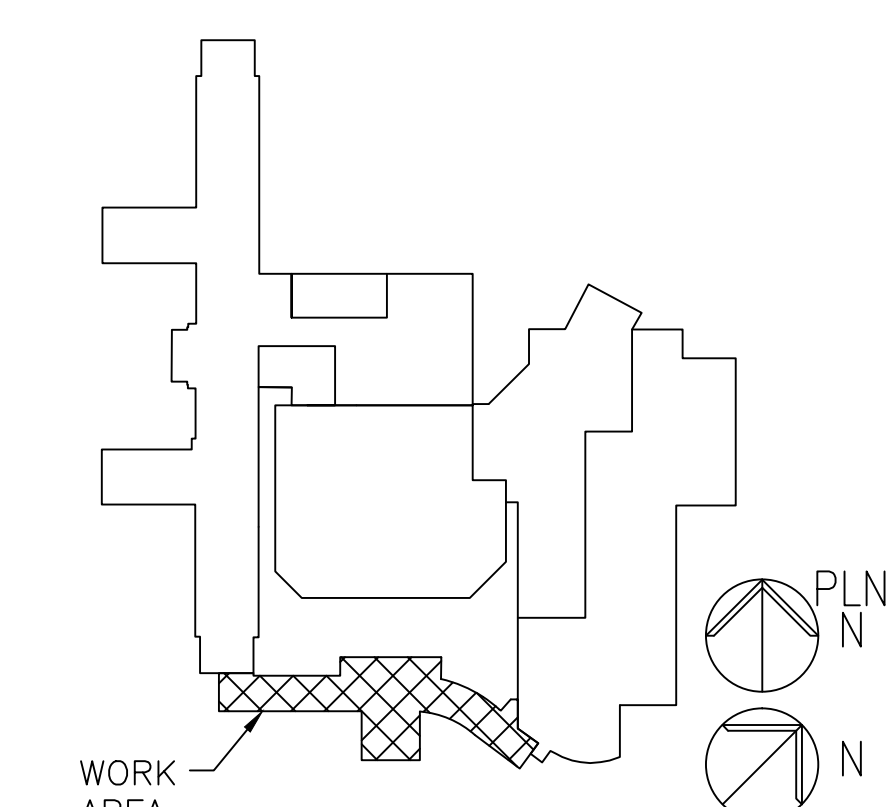
1. REFER TO 1.AE001 FOR ARCHITECTURAL SYMBOLS AND ABBREVIATIONS.
2. REFER TO MECHANICAL, ELECTRICAL, AND PLUMBING SHEETS FOR SPECIFIC NOTES FOR OTHER THAN GENERAL NOTES.
3. REFER TO 1.AI602 FOR GLAZING SCHEDULE AND DETAILS.
4. REFER TO 1.AI601 FOR DOOR SCHEDULE AND DETAILS.
5. REFER TO CIVIL DRAWINGS FOR NEW SITE WORK.
6. REFER TO AI AND ID SERIES DWGS FOR FINISH DETAILS.
7. ALL ELEVATIONS ARE REFERENCED WITH 100'-0" = 552.00' ON THE CIVIL DWGS.

KEY NOTES

- 1 RELOCATED BIKE RACK; REFER TO CIVIL DWGS.
- 2 INTERIOR BENCH, REFER TO ELEVATION A1/1.AI301.
- 3 (NOT USED)
- 4 RECESS SLAB 1/2" TO ACCOMMODATE WALK OFF MAT - SEE DETAIL B6/1.ID501 FOR DETAILS.
- 5 EXTERIOR CONCRETE BENCH; REFER TO CIVIL DWGS. FOR DETAILS.
- 6 NOT USED
- 7 COLUMN SURROUND CONSTRUCTION SIMILAR TO DETAIL B5 THIS SHEET. EXPAND TO DIMENSIONS SHOWN AS REQUIRED.
- 8 COMPUTER BASED BUILDING AUTOMATION SYSTEM LOCATION.
- 9 DONOR WALL, REFER TO 1.AI301 FOR MORE INFORMATION.
- 10 (NOT USED)
- 11 CANOPY ABOVE.
- 12 FRAME WALL BACK TO EXTERIOR WALL AS INDICATED. CONSTRUCTION SIMILAR TO TYPE C WALL.
- 13 INFILL EXISTING WALL.

LEGEND

- NEW DOORS
- EXISTING DOORS TO REMAIN
- NEW WALLS
- EXISTING WALLS TO REMAIN
- WINDOW TAG; REFER TO 1.AI602 FOR DETAILS



KEYPLAN - NOT TO SCALE
FULLY SPRINKLERED
BID DOCUMENTS 08-23-2013

Revision		01-10-14	CONSULTANTS:	ARCHITECT/ENGINEERS:	<div><div>PARADIGM</div><div>ENGINEERS AND CONSTRUCTORS</div><div>200 Envoy Circle #201, Louisville KY 40299 -- PH: 502.339.8511 -- www.paradigmusa.com</div></div>	<div><div>COMMONWEALTH OF PENNSYLVANIA</div><div>REGISTERED PROFESSIONAL</div><div>BLAINE VAN GANSBEKE</div><div>ENGINEER</div><div>No. PE079038</div></div>	Drawing Title: ENLARGED FLOOR PLANS		Project Title: NEW FRONT ENTRANCE BUILDING 1		Project Number: 595-11-125		Office of Construction and Facilities Management <div><div></div><div>Department of Veterans Affairs</div></div>
Revision 1		03/18/14					Approved Project Director		Location: LEBANON VAMC 1700 SOUTH LINCOLN AVE., LEBANON PA 17042-7529		Building Number: 1		
Revisions:		Date					Date: 06-28-2013		Checked: BVG		Drawing Number: 1.AE401		