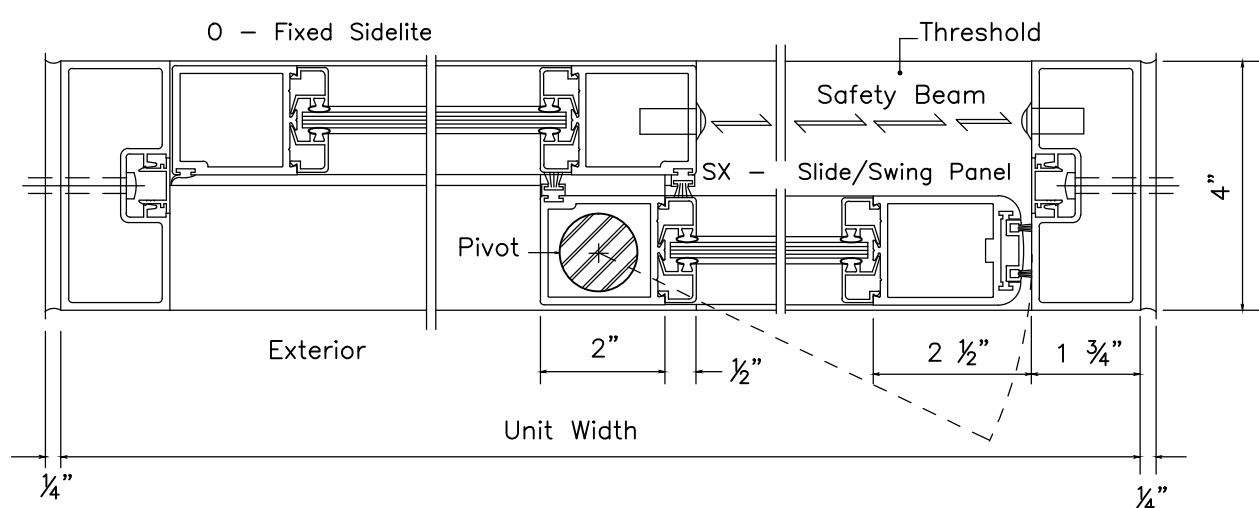
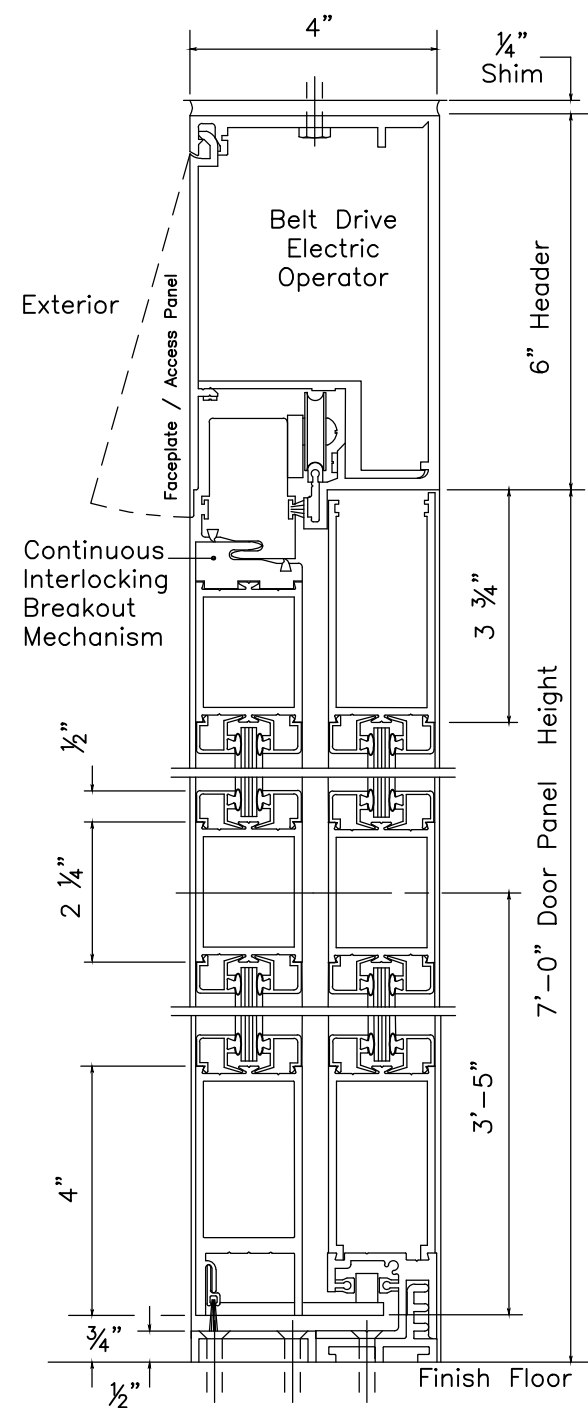


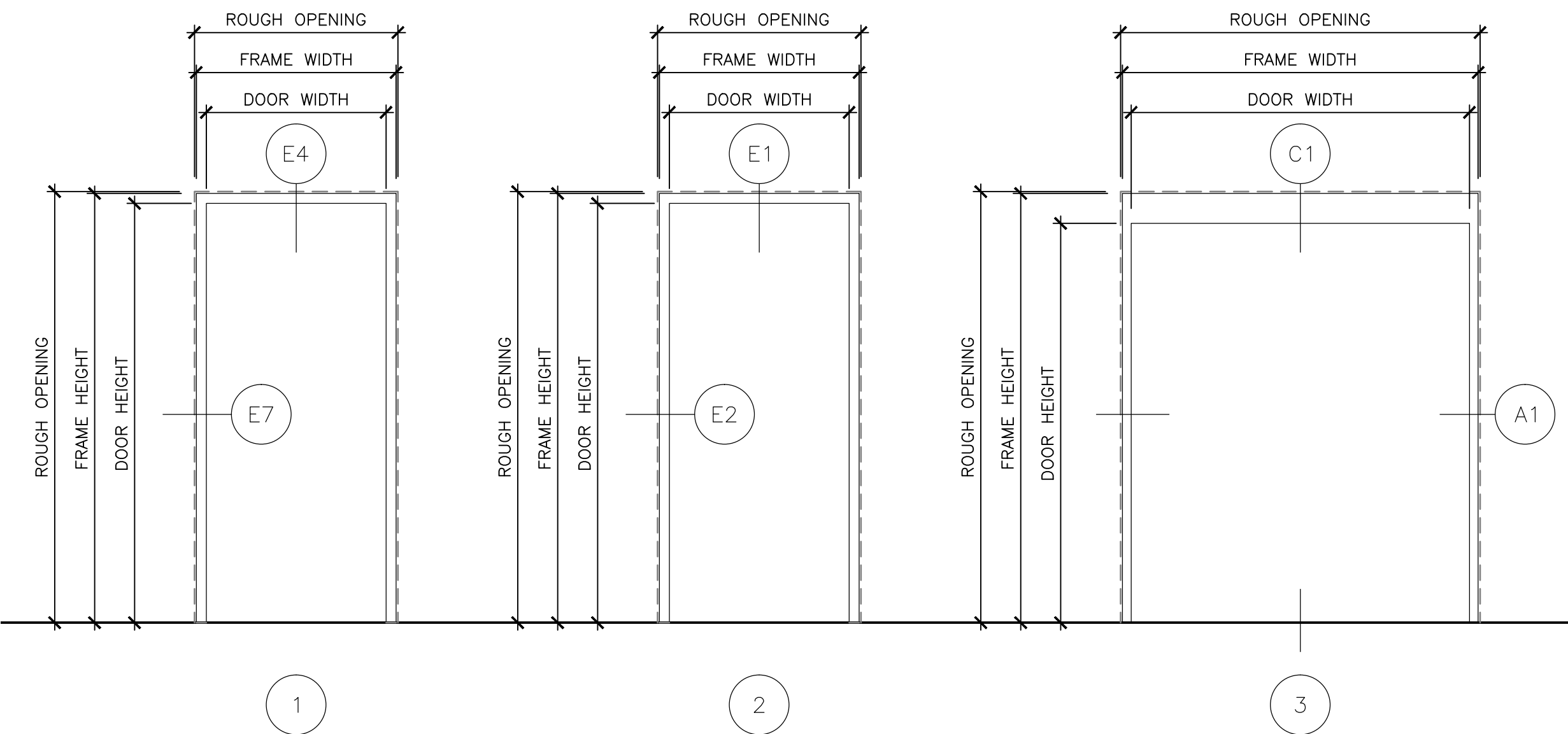
three inches = one foot
one and one half inches = one foot
one inch = one foot
three quarters inch = one foot
one half inch = one foot
three eighths inch = one foot
one quarter inch = one foot
one eighth inch = one foot



A1 SLIDING DOOR HORIZONTAL SECTION DETAIL
NOT TO SCALE

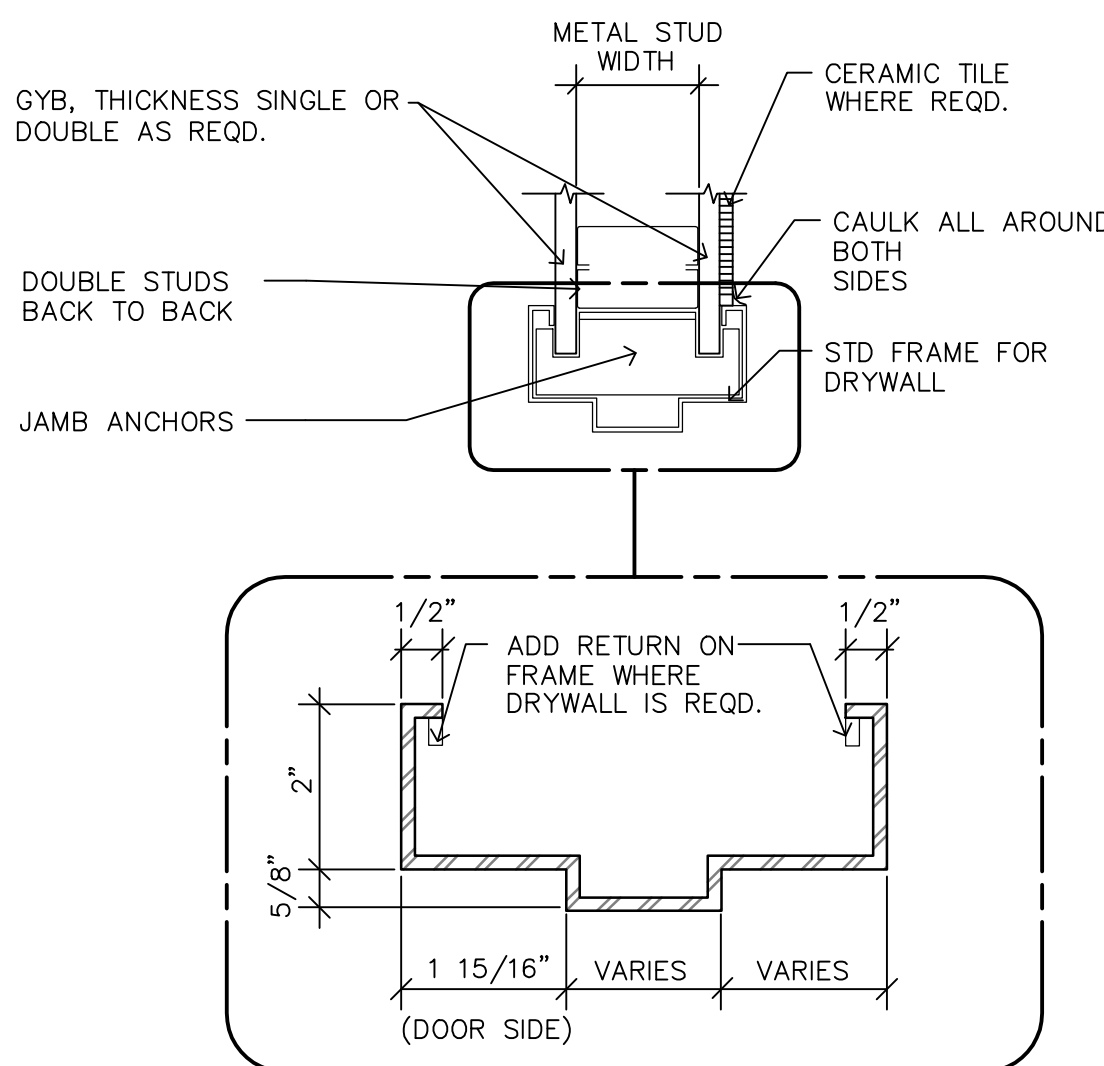


A5 DOOR TYPES
NOT TO SCALE

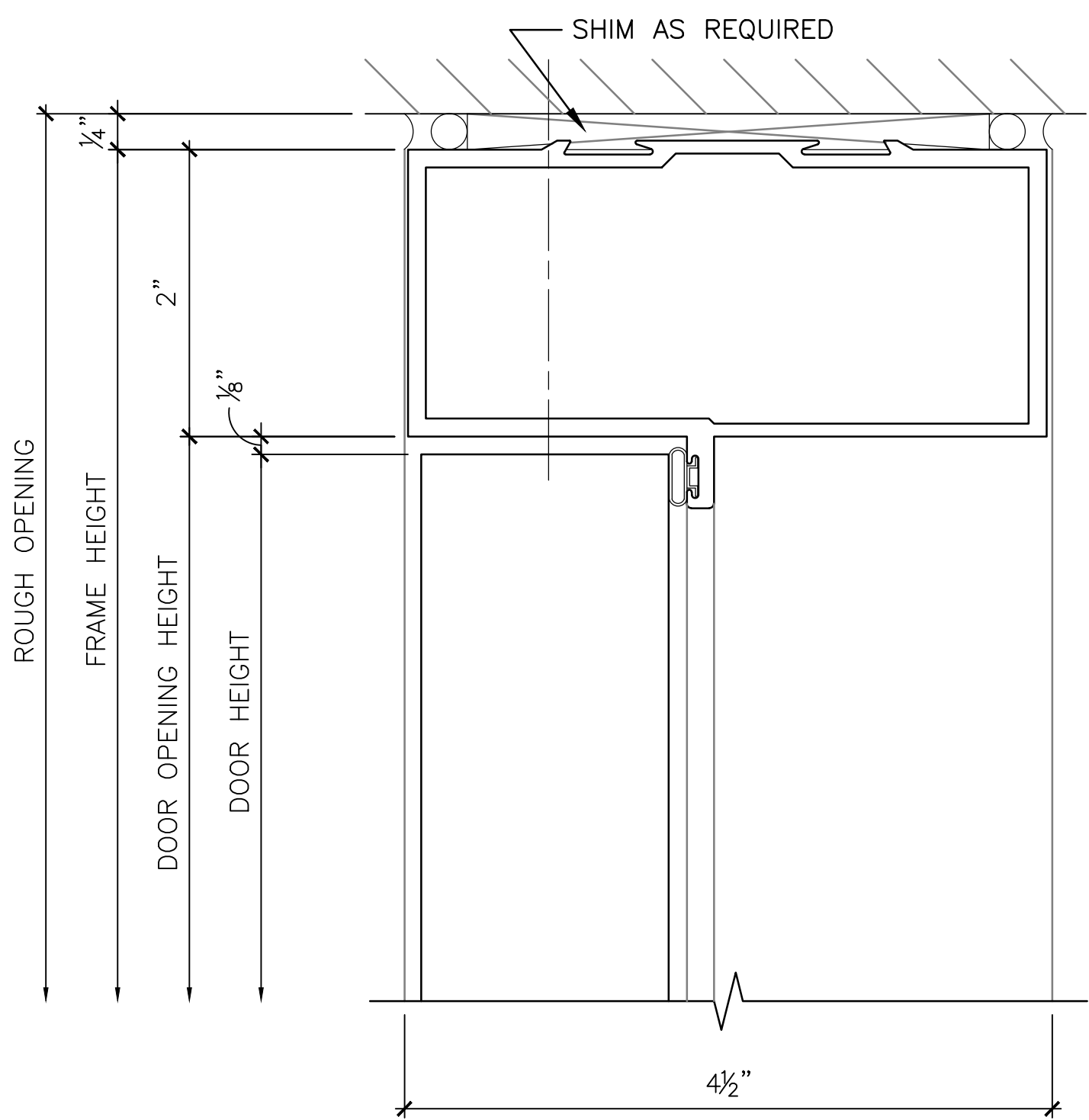


C5 FRAME TYPES
NOT TO SCALE

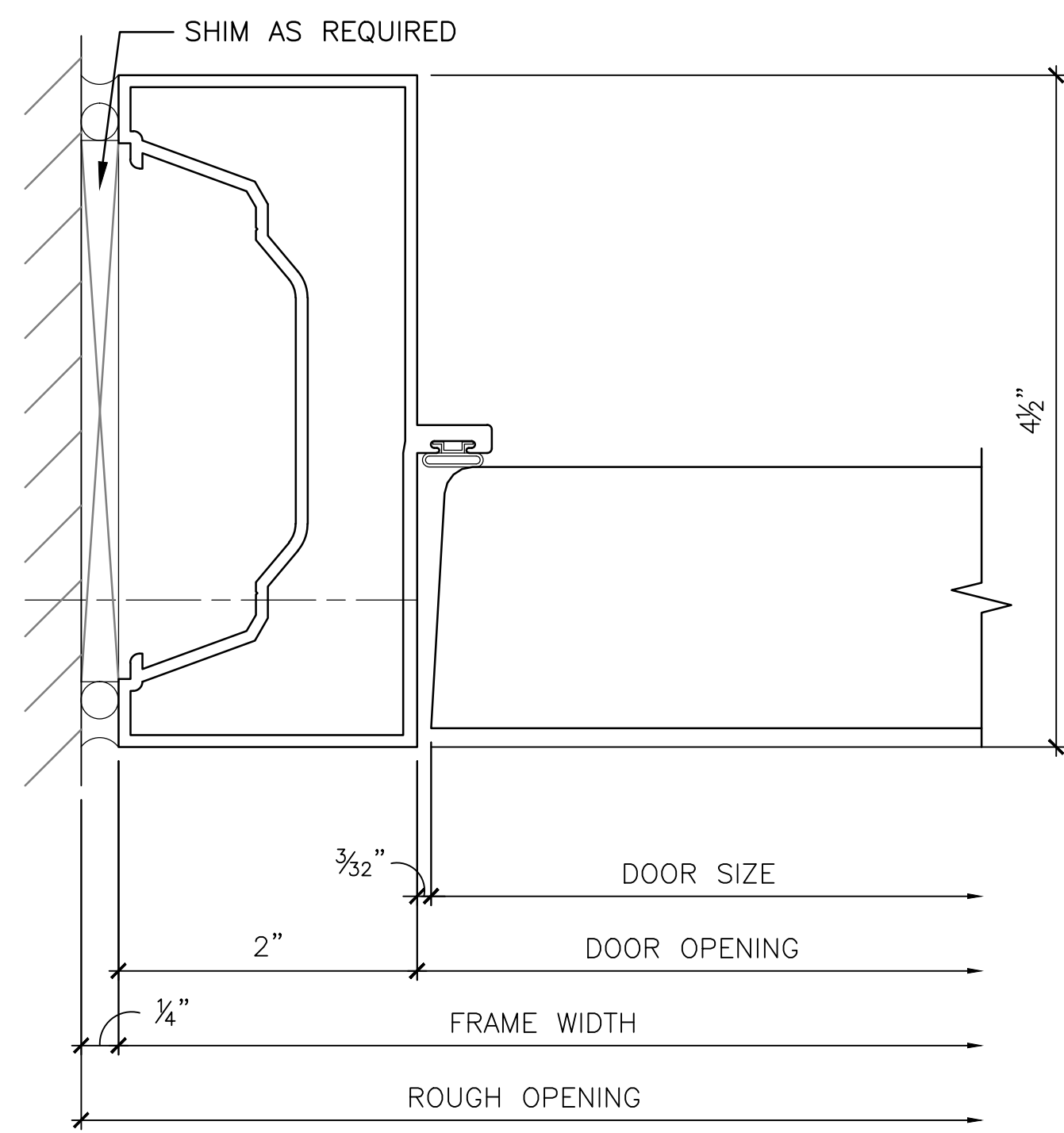
C1 SLIDING DOOR VERTICAL SECTION DETAIL
NOT TO SCALE



E1 HOLLOW METAL FRAME DETAIL
NOT TO SCALE



E4 ALUMINUM FRAME DETAIL • HEAD
NOT TO SCALE



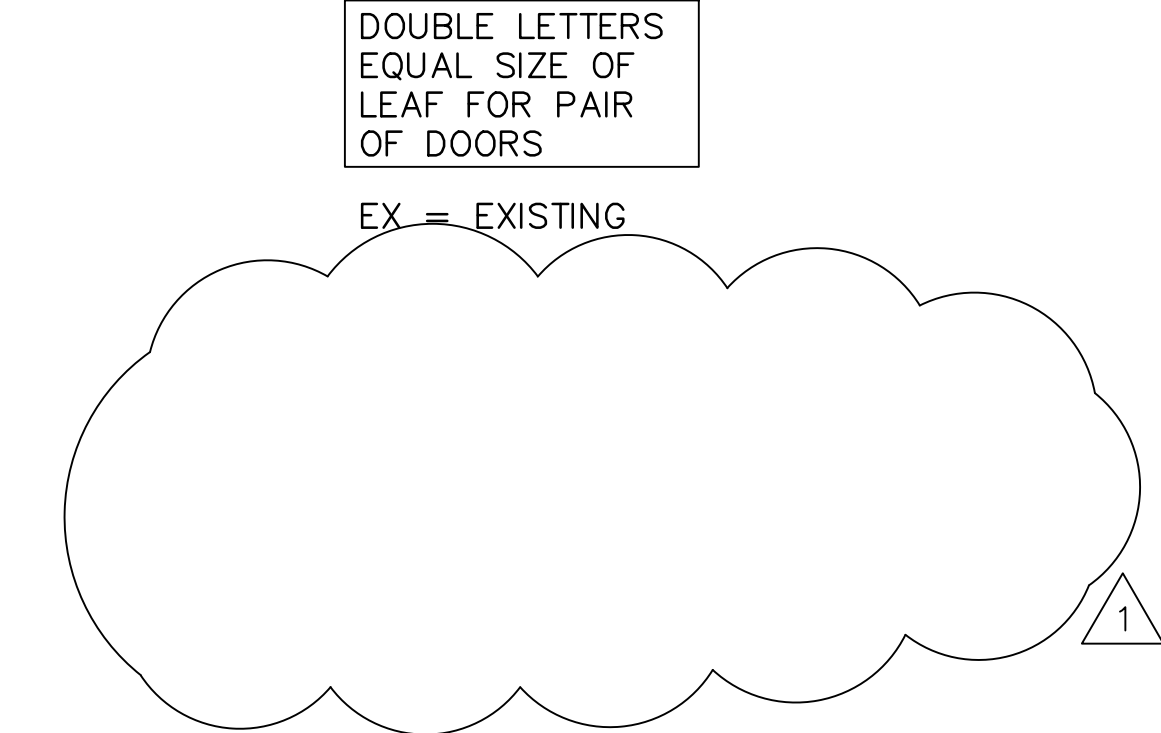
E7 ALUMINUM FRAME DETAIL • JAMB
NOT TO SCALE

DOOR SIZES					FRAME TYPE		FIRE RATING	
MK	WIDTH		HEIGHT		#	MATERIAL	A	UL
A	2'-10"	[864]	7'-0"	[2032]	1	ALUMINUM	A	2 HOUR
B	3'-0"	[914]	7'-0"	[2032]	2	HOLLOW METAL	B	1 1/2 HOUR
C	3'-8"	[1118]	7'-0"	[2032]	3	ALUMINUM	C	30 MINUTES
D	3'-11"	[1194]	7'-0"	[2032]			20	20 MINUTES
E	4'-0"	[1219]	7'-0"	[2032]				

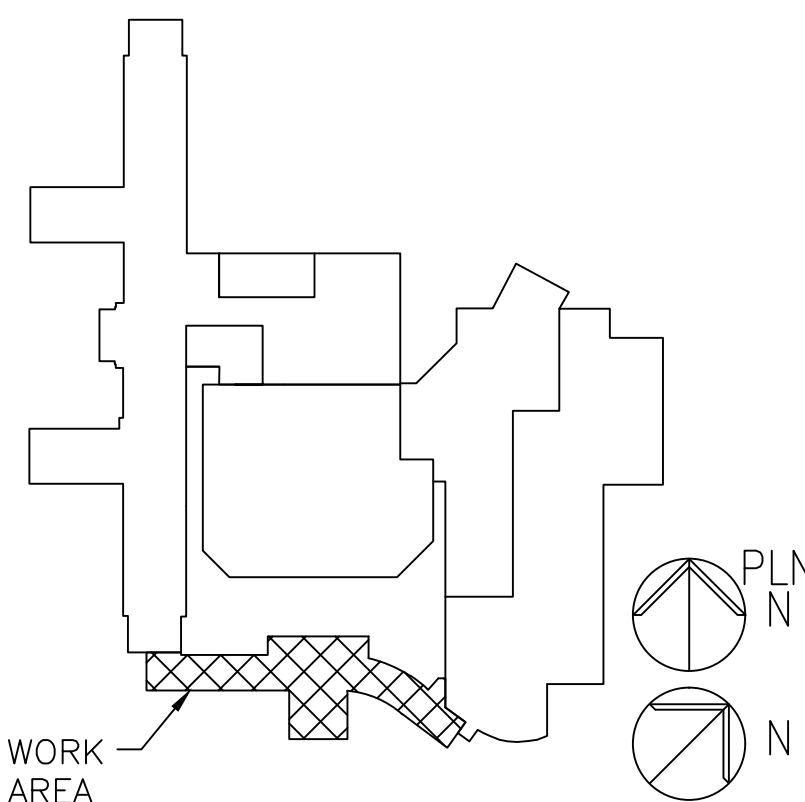
DOOR SYMBOL
FRAME TYPE (JAMB DETAIL)
DOOR SIZE
DOOR HARDWARE

DOOR TYPE
UL RATING

LEGEND (SEE ELEVATIONS)
GLASS OR LOUVER REQUIRED BY MODIFICATION
GLASS OR LOUVER REQUIRED BY ELEVATION TYPE



- NOTES:
- ALL DOORS SHALL BE FLUSH - 1 3/4" [44mm] THICK UNLESS NOTED OTHERWISE.
 - TOP AND SIDE RAILS SHALL BE 9" [229mm] MINIMUM. BOTTOM RAILS SHALL BE 12" [305mm] MINIMUM.
 - DOOR TYPES 7, 8, and 9 SHALL NOT BE USED FOR OPPOSING DOORS.
 - FOR SCHEDULING DOOR TYPES, SEE PG-18-14.
 - EVEN NUMBERS ARE METAL; ODD NUMBERS ARE WOOD.
 - DOUBLE LETTERS ARE EQUIVALENT TO DOUBLE DOORS IN OPENING.



KEYPLAN - NOT TO SCALE
FULLY SPRINKLERED
BID DOCUMENTS 08-23-2013

Revision	01-10-14	CONSULTANTS:	ARCHITECT/ENGINEERS:	Drawing Title: DOOR SCHEDULE AND LEGEND	Project Title: NEW FRONT ENTRANCE BUILDING 1	Project Number: 595-11-125	Office of Construction and Facilities Management
Revision 1	03/18/14		PARADIGM ENGINEERS AND CONSTRUCTORS	Approved Project Director	Location: LEBANON VAMC 700 SOUTH LINCOLN AVE. LEBANON PA. 17042-7529	Building Number: 1	
Revisions	Date		200 Envoy Circle #201, Louisville KY 40299 - PH: 502.339.8511 - www.paradigmusa.com		Date: 06-28-2013	Drawing Number: 1.A1601	Department of Veterans Affairs