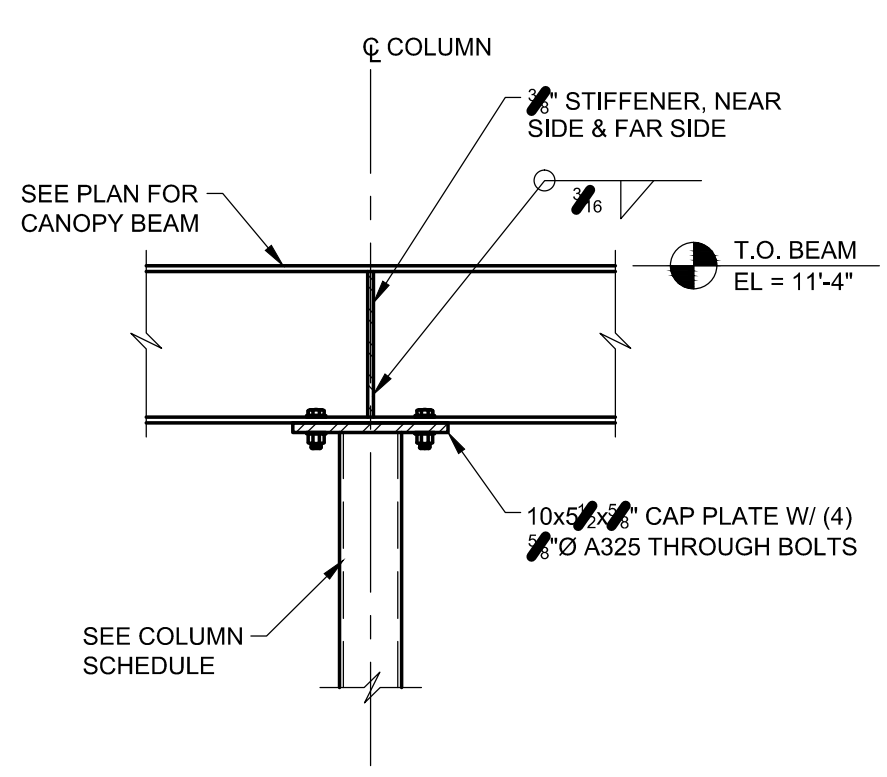
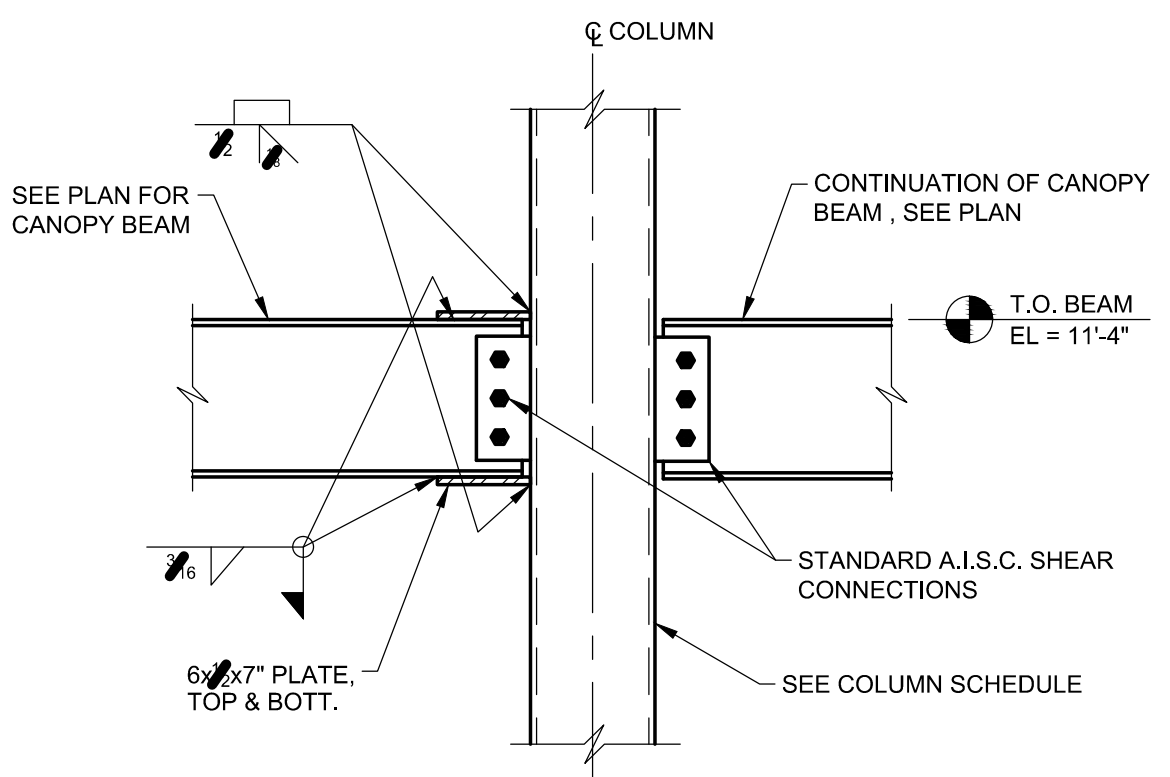


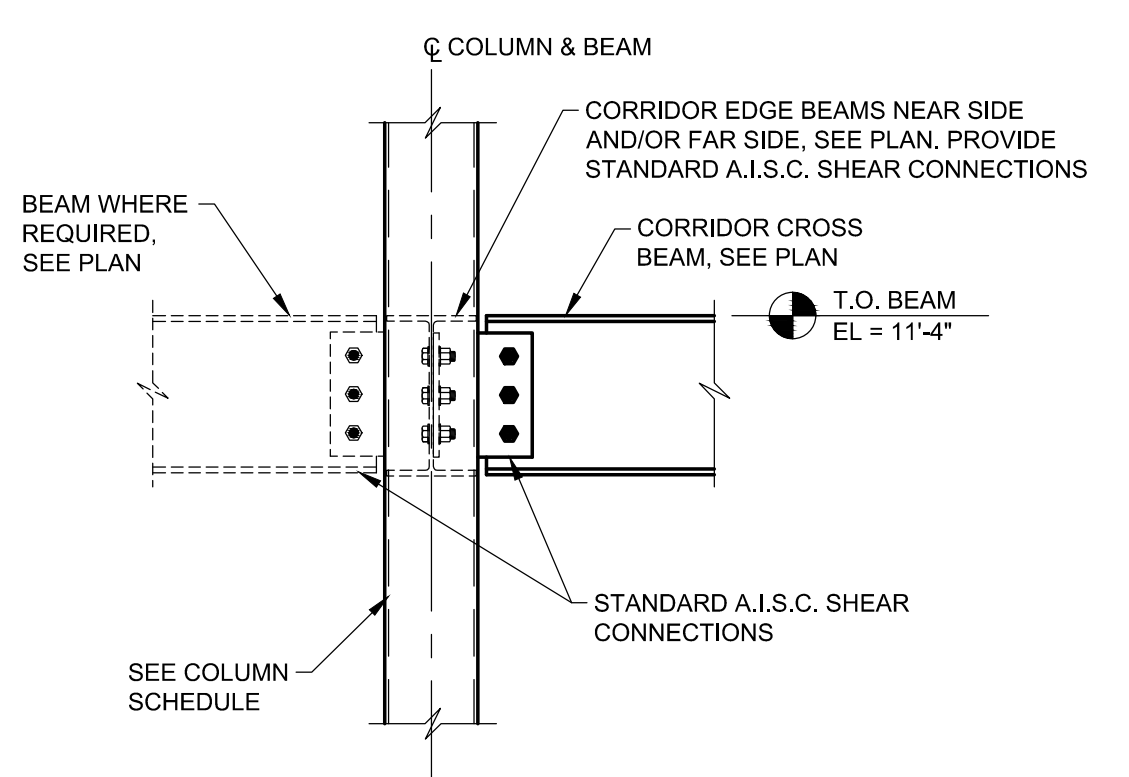
three inches = one foot  
one and one half inches = one foot  
one inch = one foot  
three quarters inch = one foot  
one half inch = one foot  
three eighths inch = one foot  
one quarter inch = one foot  
one eighth inch = one foot



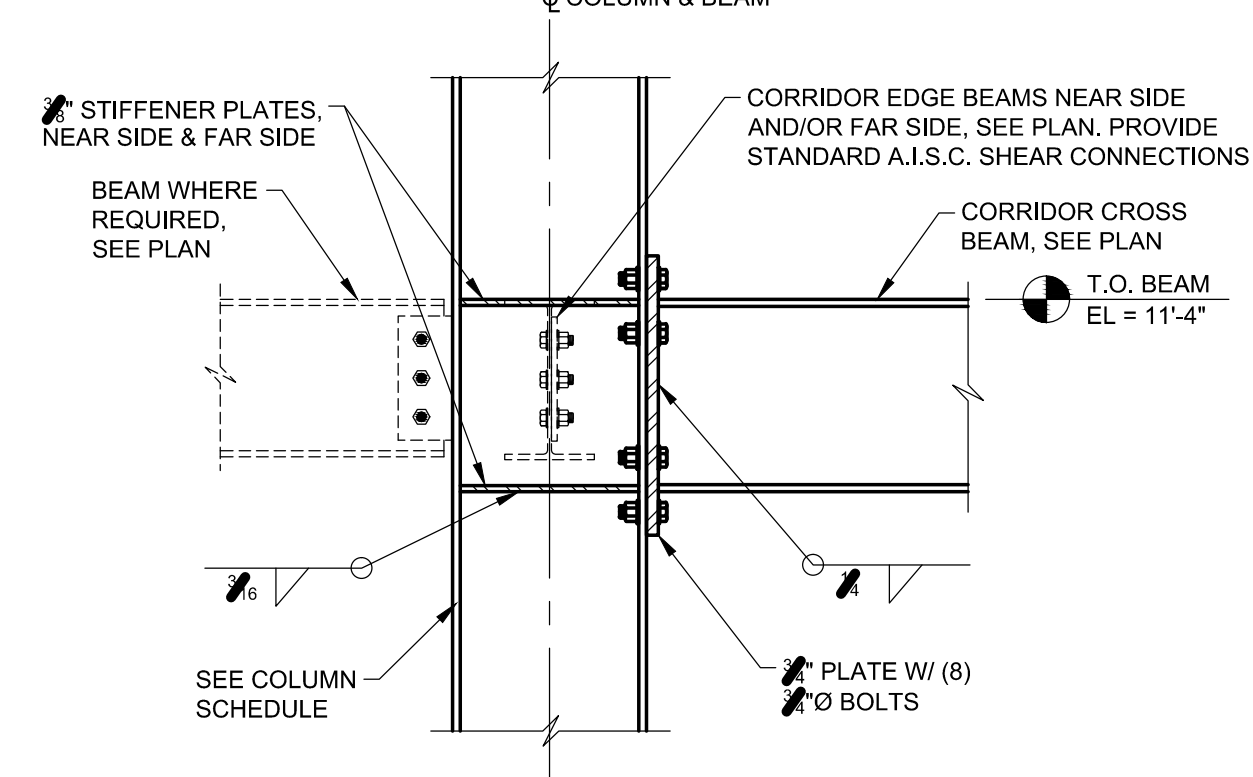
1 CONNECTION DETAIL  
1" = 1'-0"



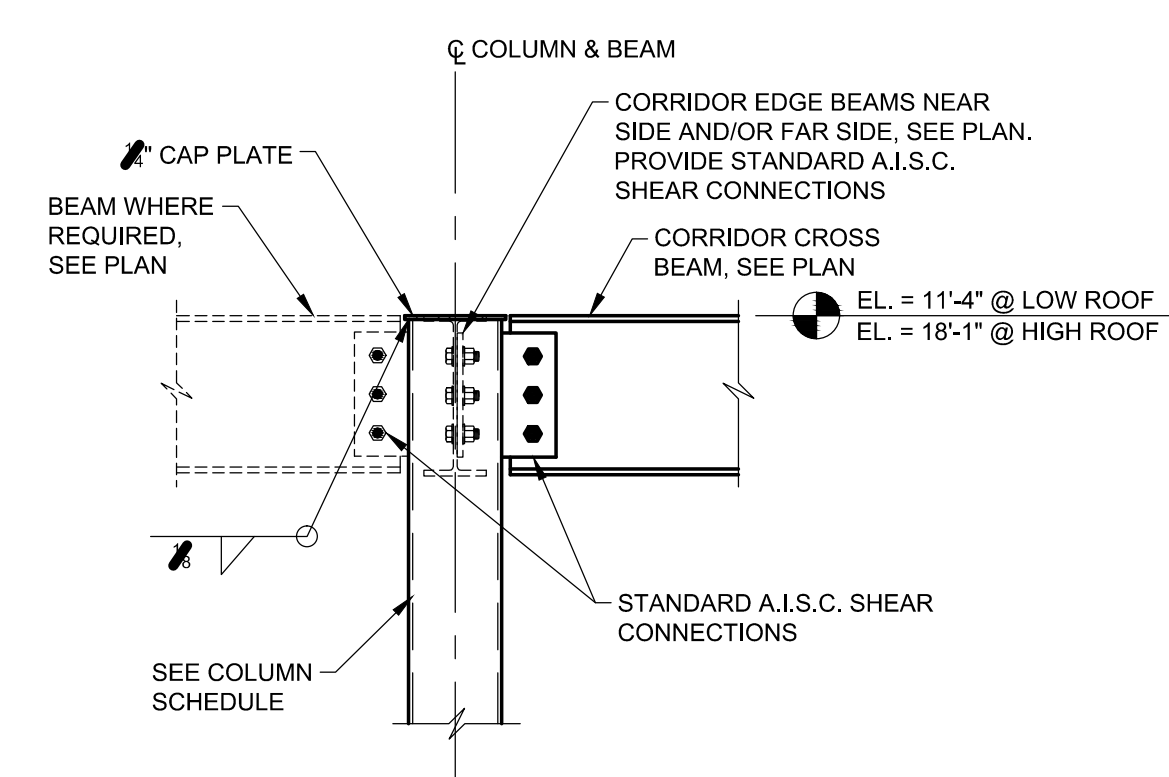
2 CONNECTION DETAIL  
1" = 1'-0"



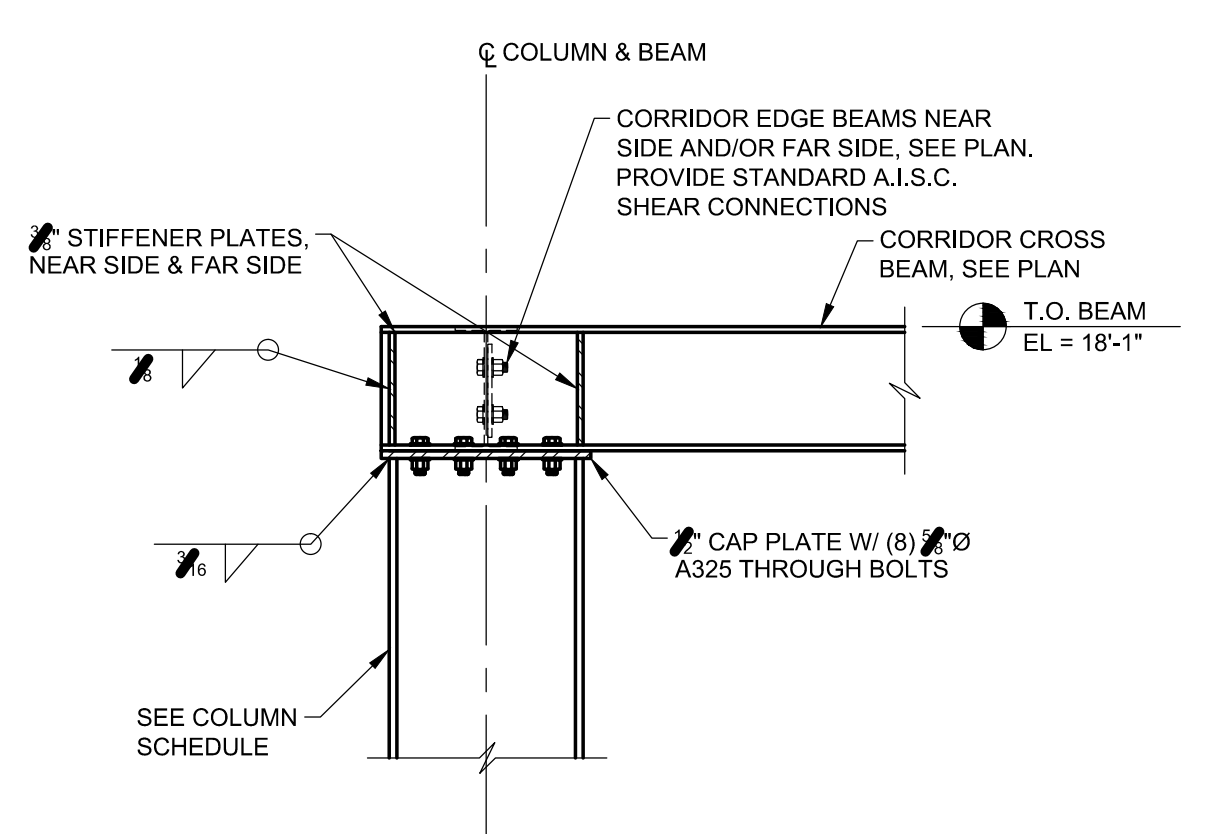
3 CONNECTION DETAIL  
1" = 1'-0"



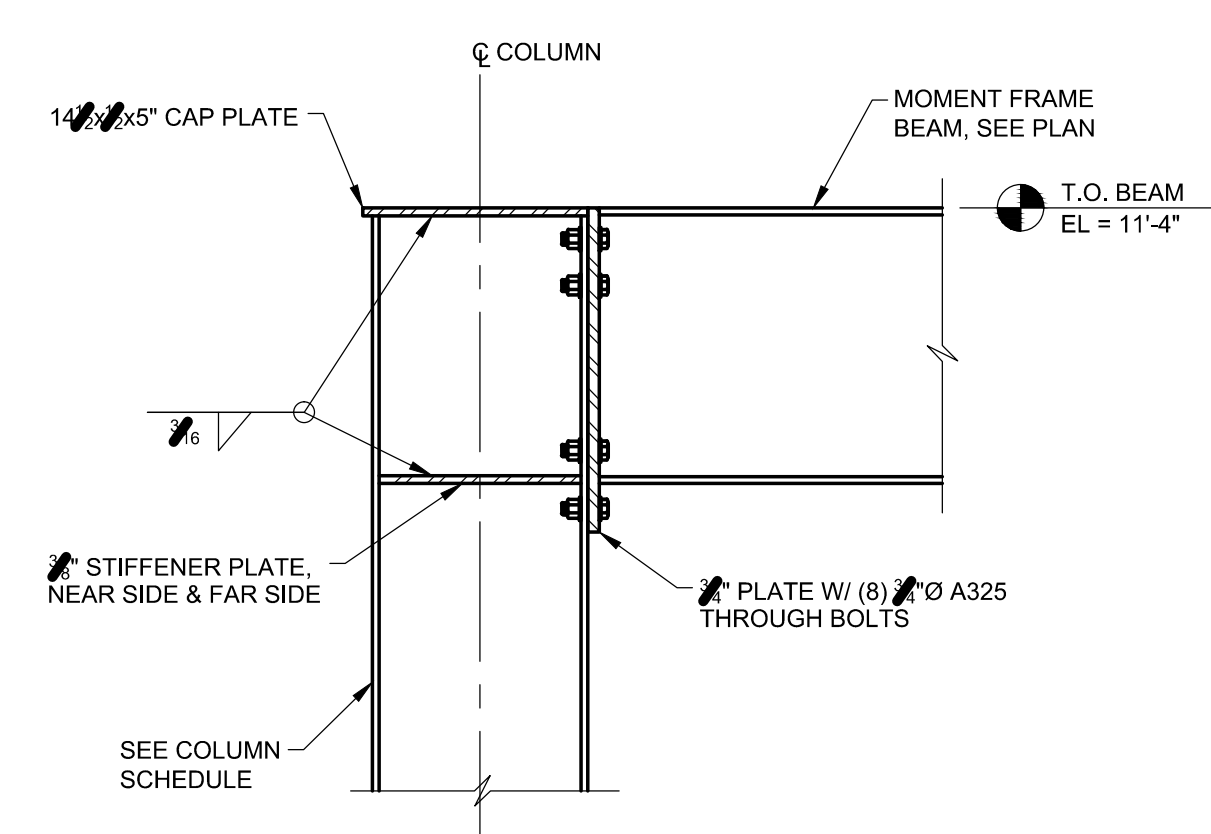
4 CONNECTION DETAIL  
1" = 1'-0"



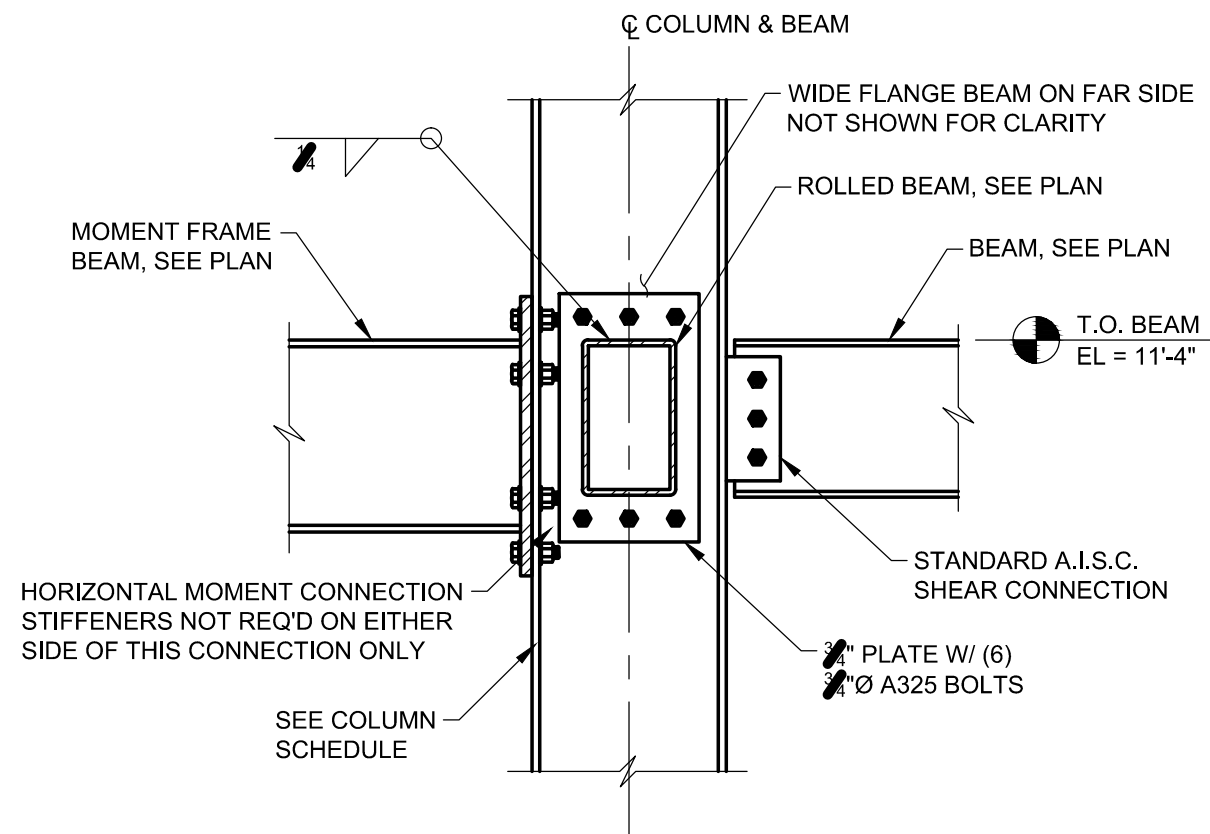
5 CONNECTION DETAIL  
1" = 1'-0"



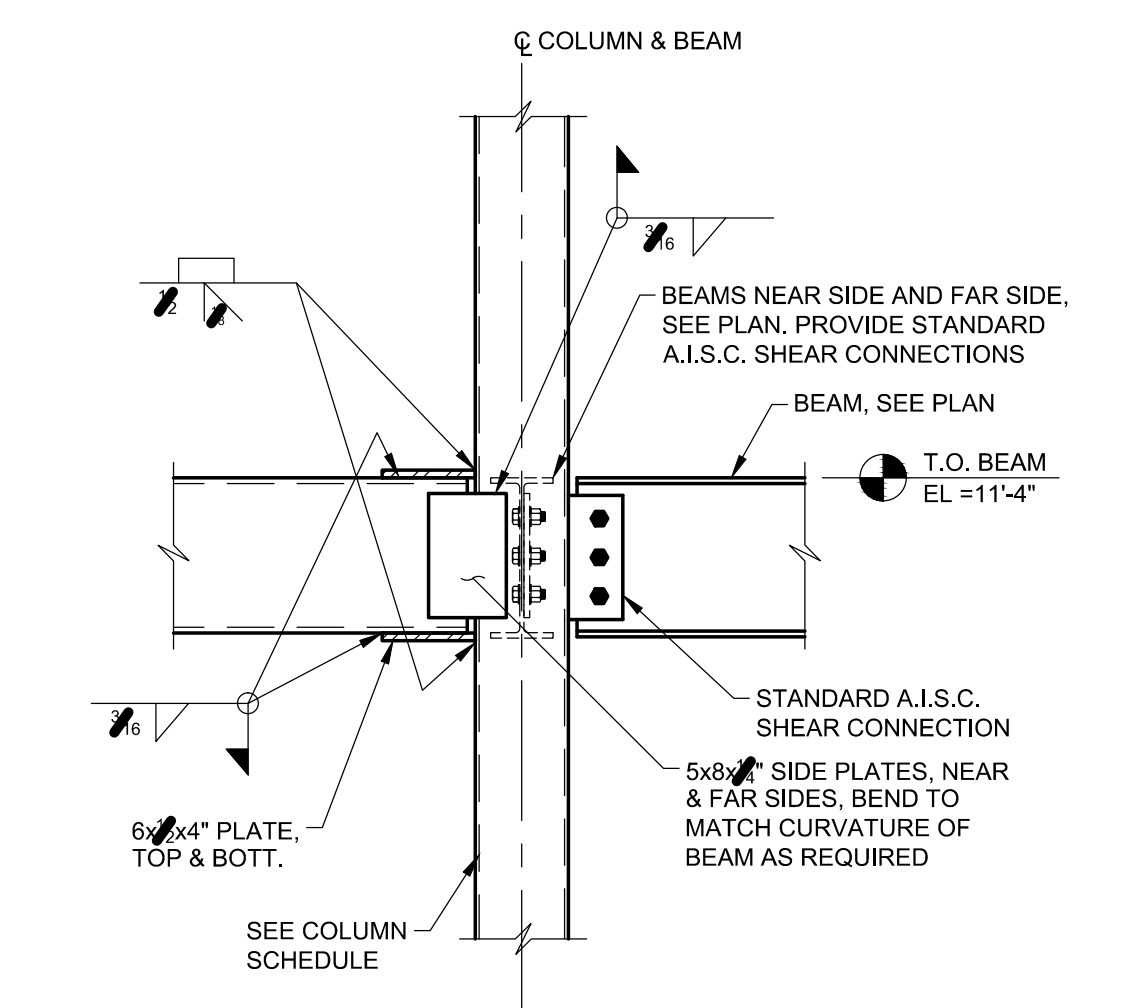
6 CONNECTION DETAIL  
1" = 1'-0"



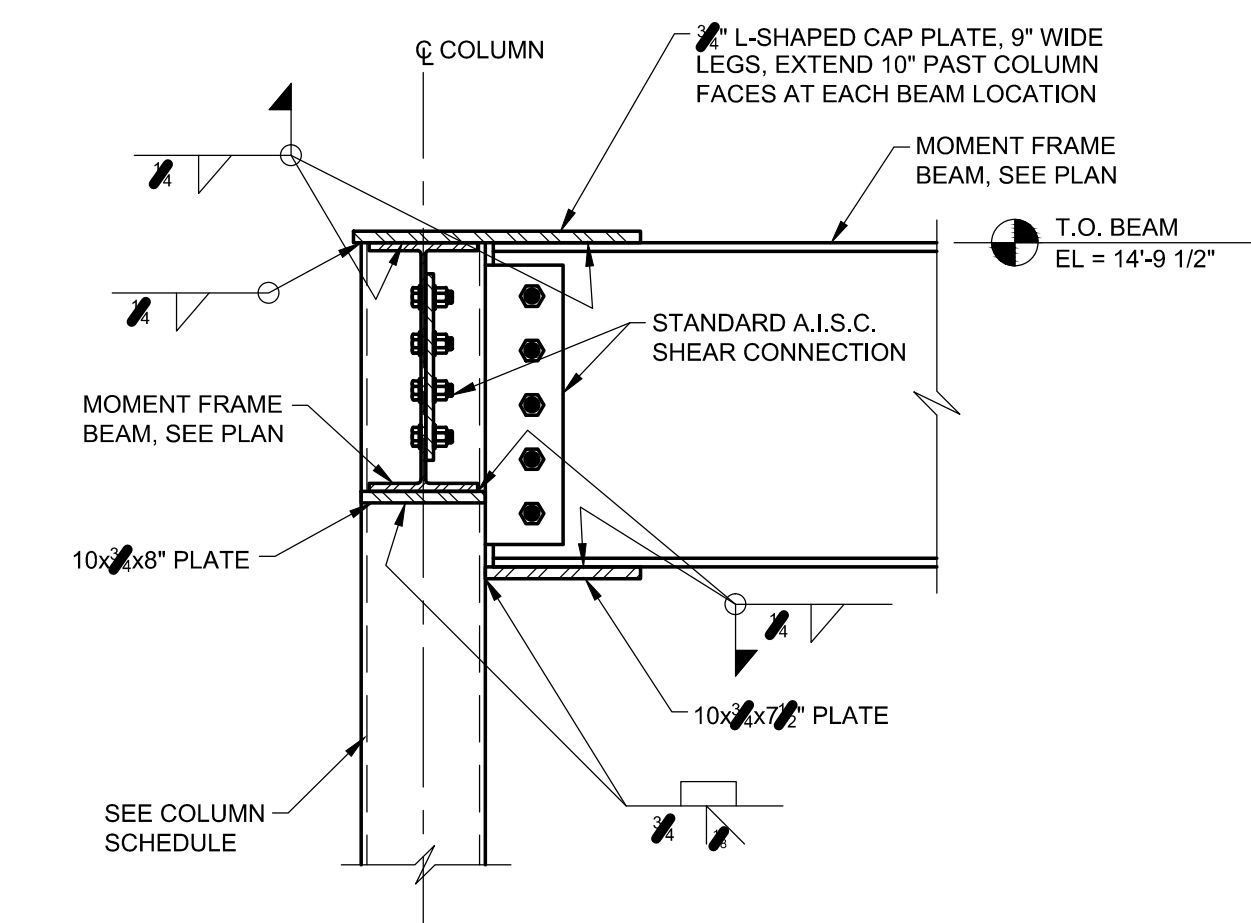
7 CONNECTION DETAIL  
1" = 1'-0"



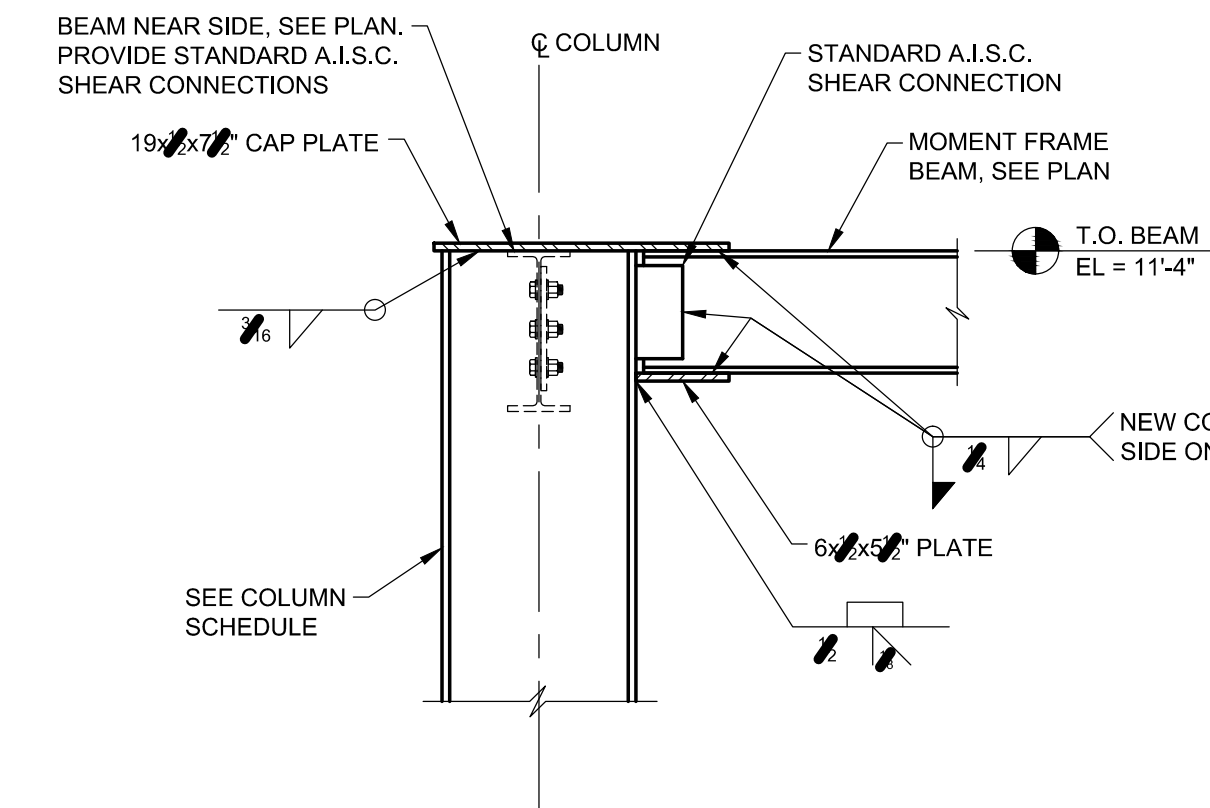
8 CONNECTION DETAIL  
1" = 1'-0"



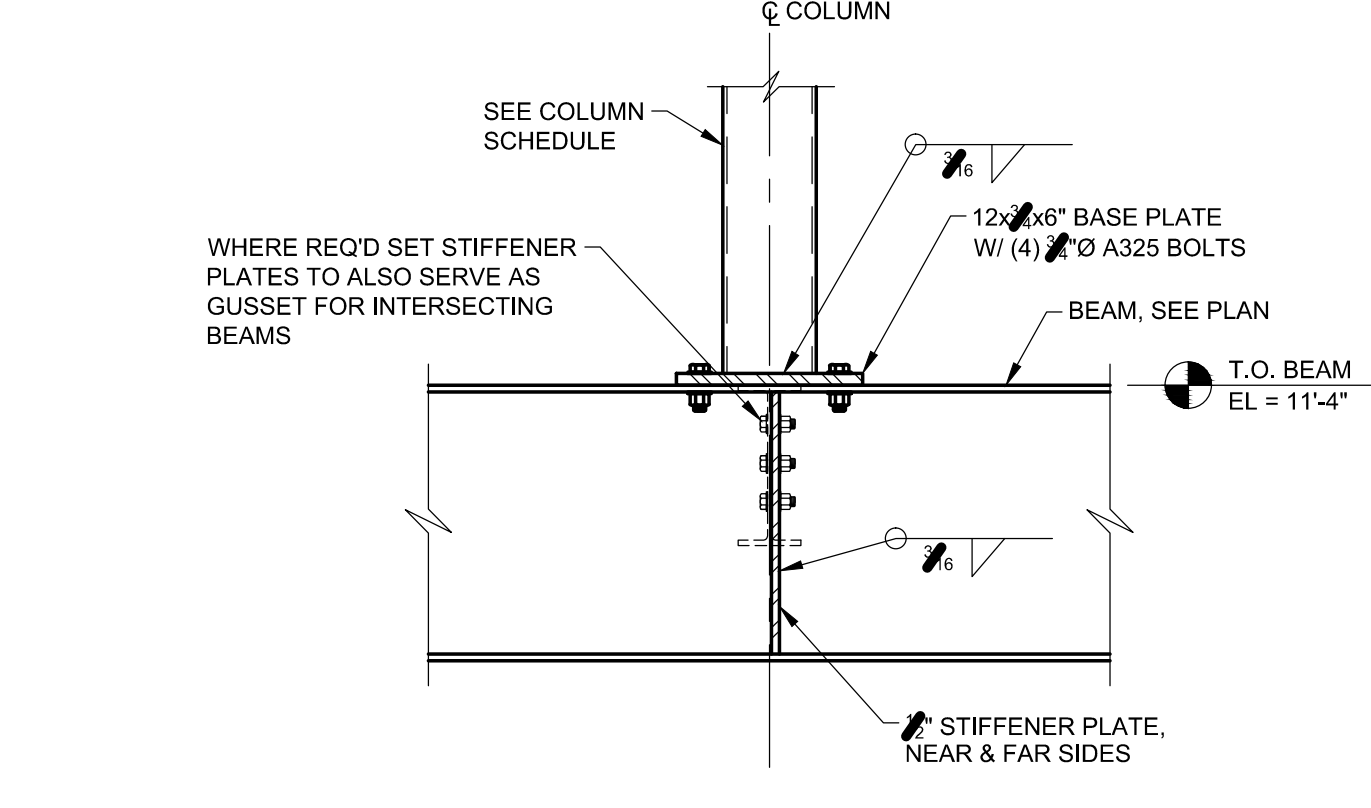
9 CONNECTION DETAIL  
1" = 1'-0"



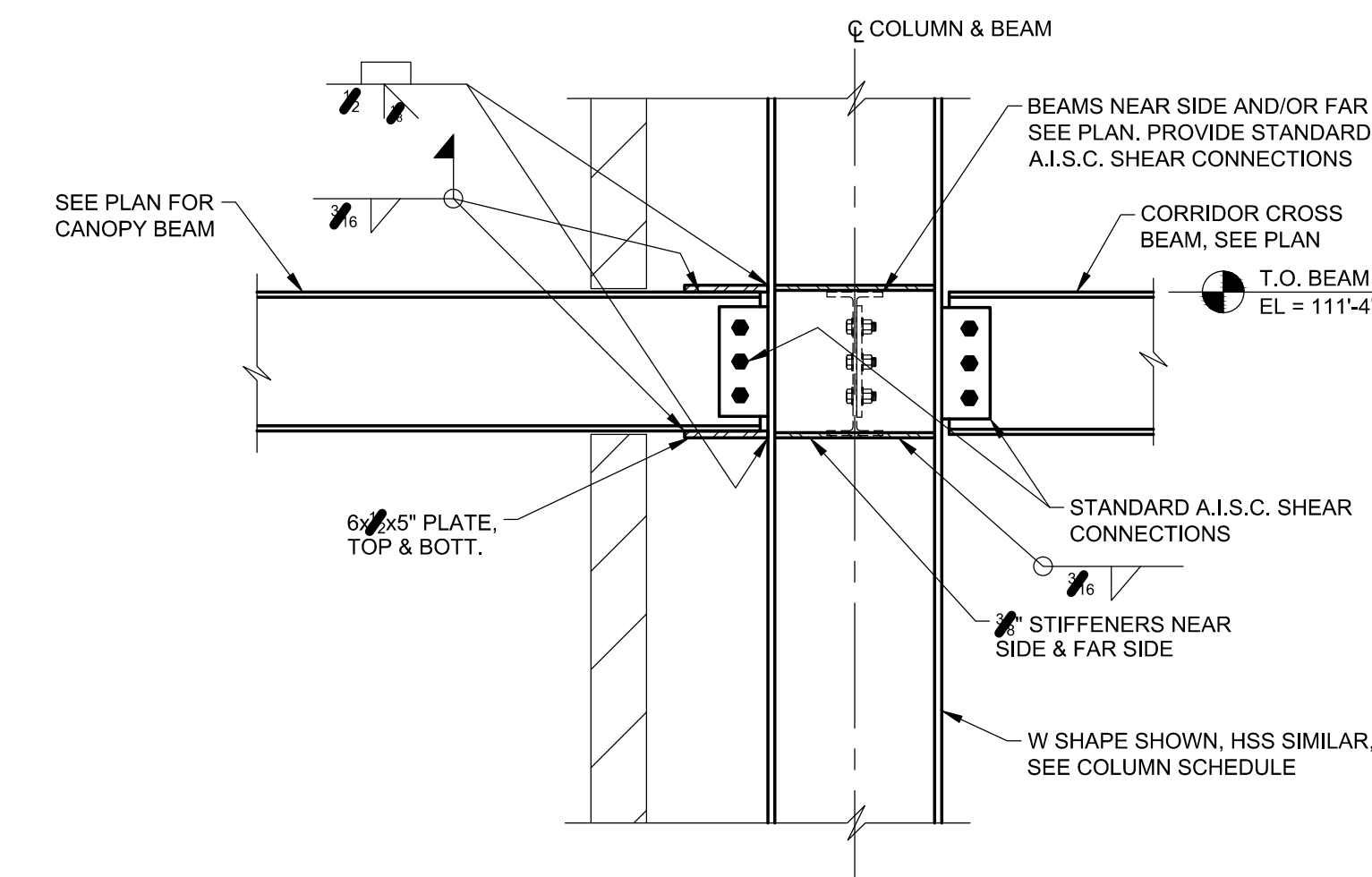
10 CONNECTION DETAIL  
1" = 1'-0"



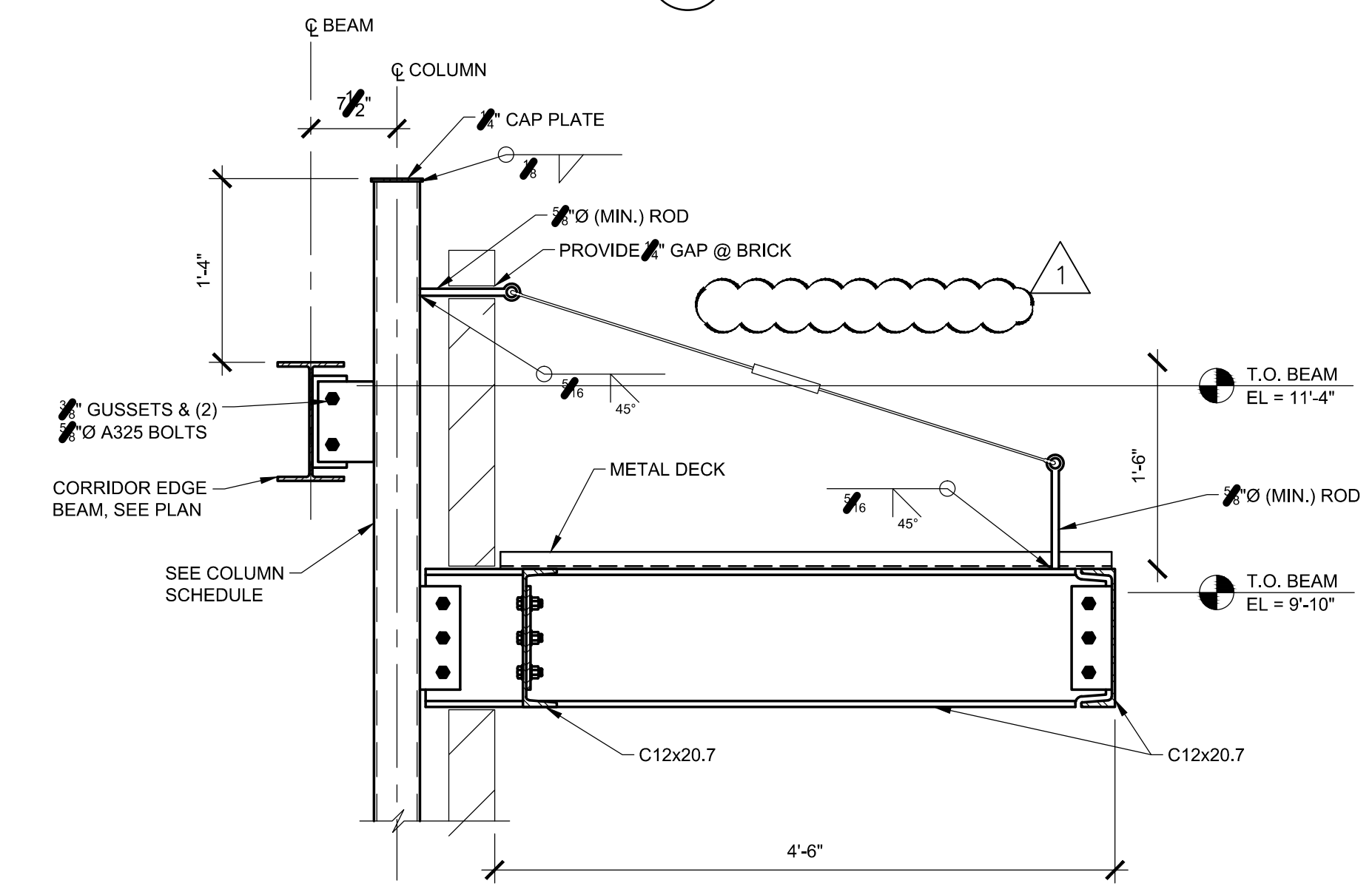
11 CONNECTION DETAIL  
1" = 1'-0"



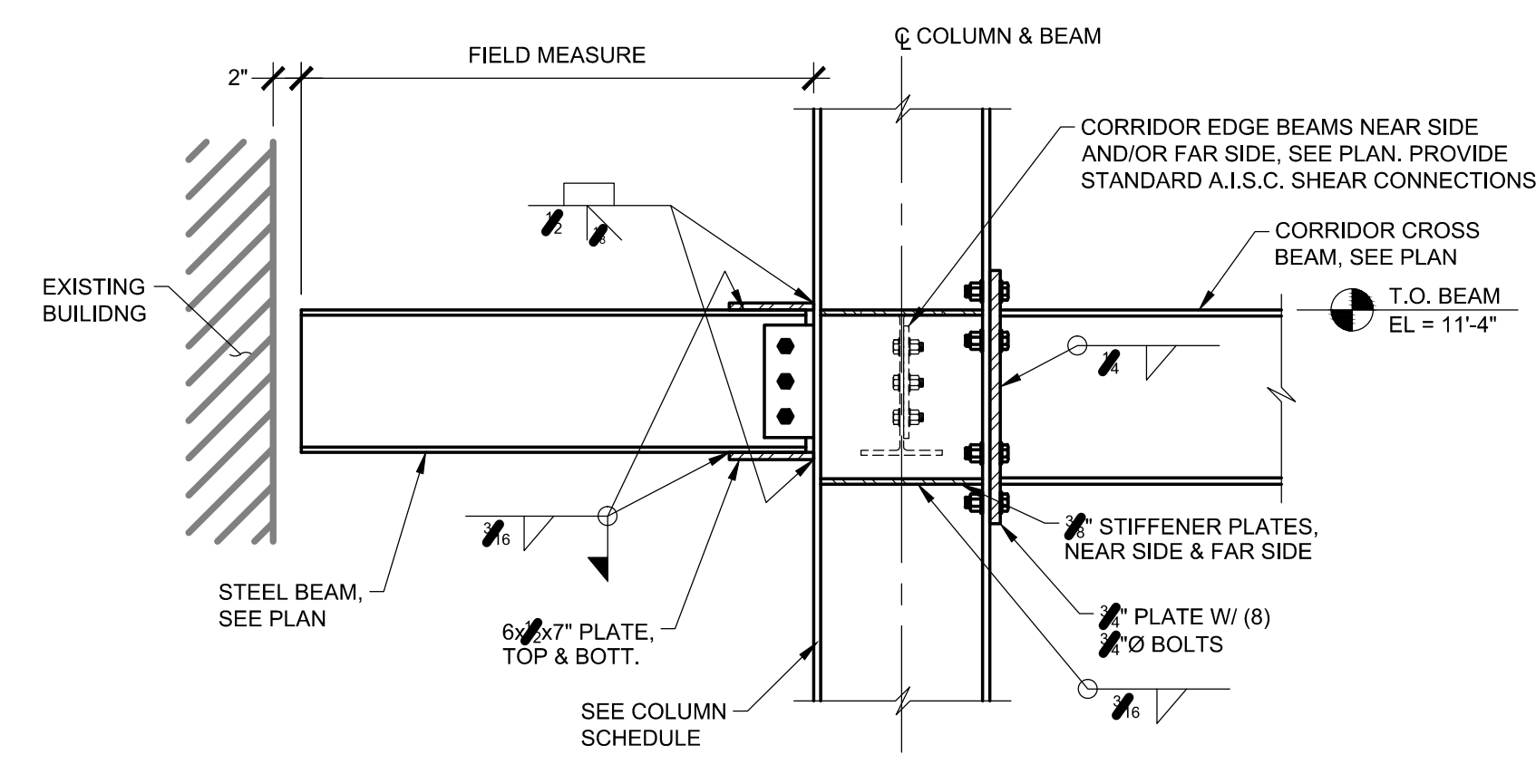
12 CONNECTION DETAIL  
1" = 1'-0"



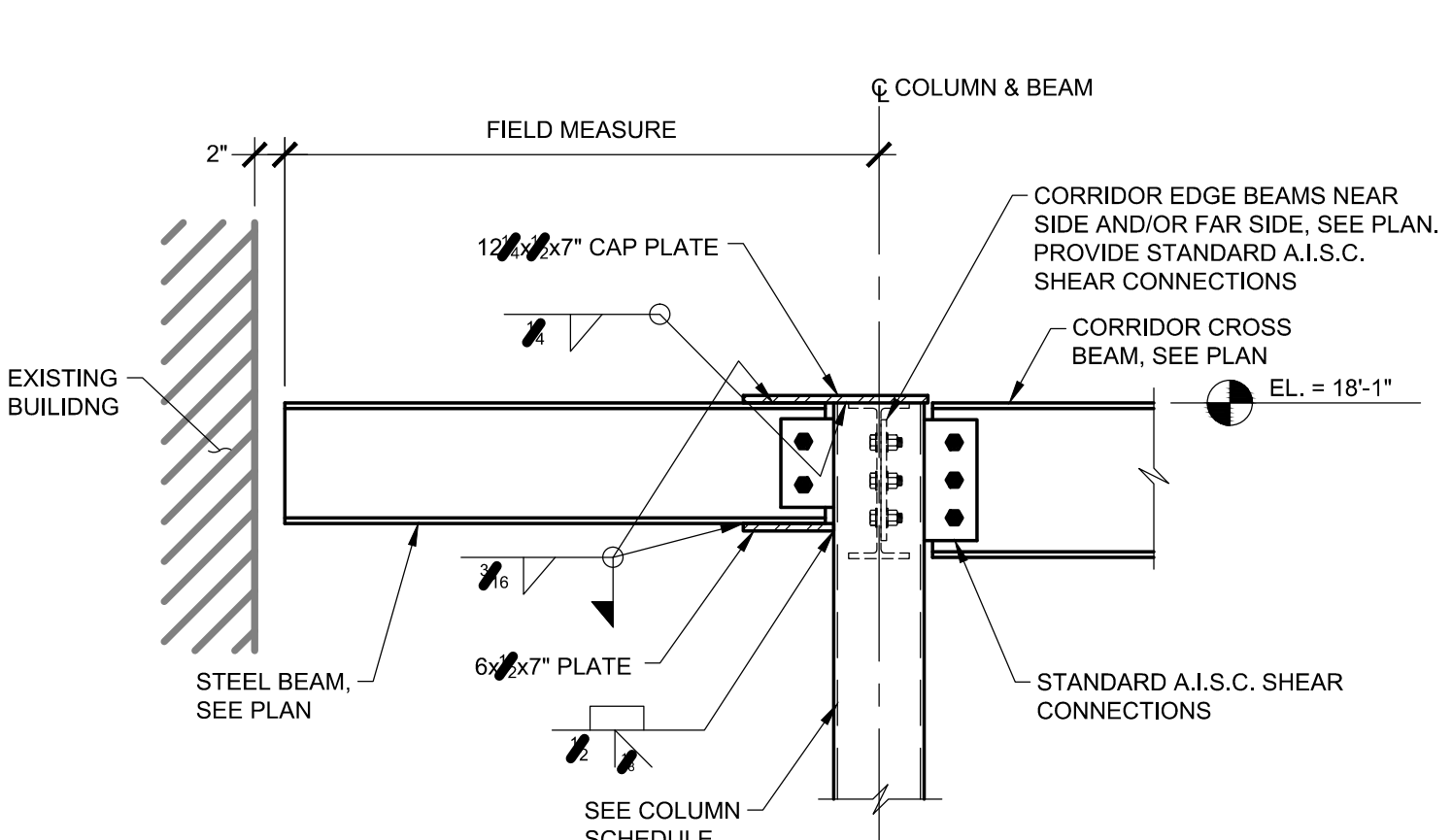
13 CONNECTION DETAIL  
1" = 1'-0"



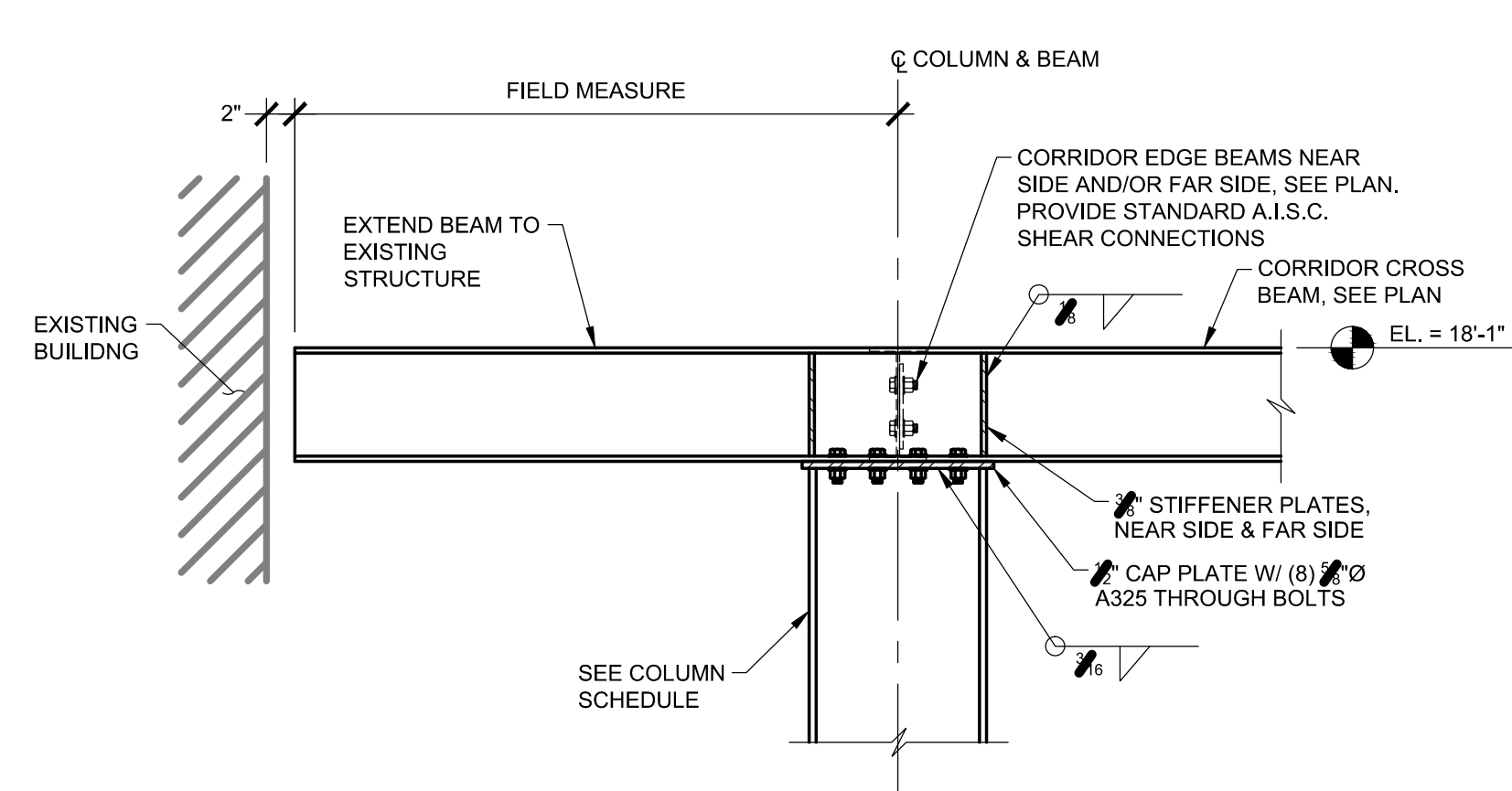
14 CONNECTION DETAIL  
1" = 1'-0"



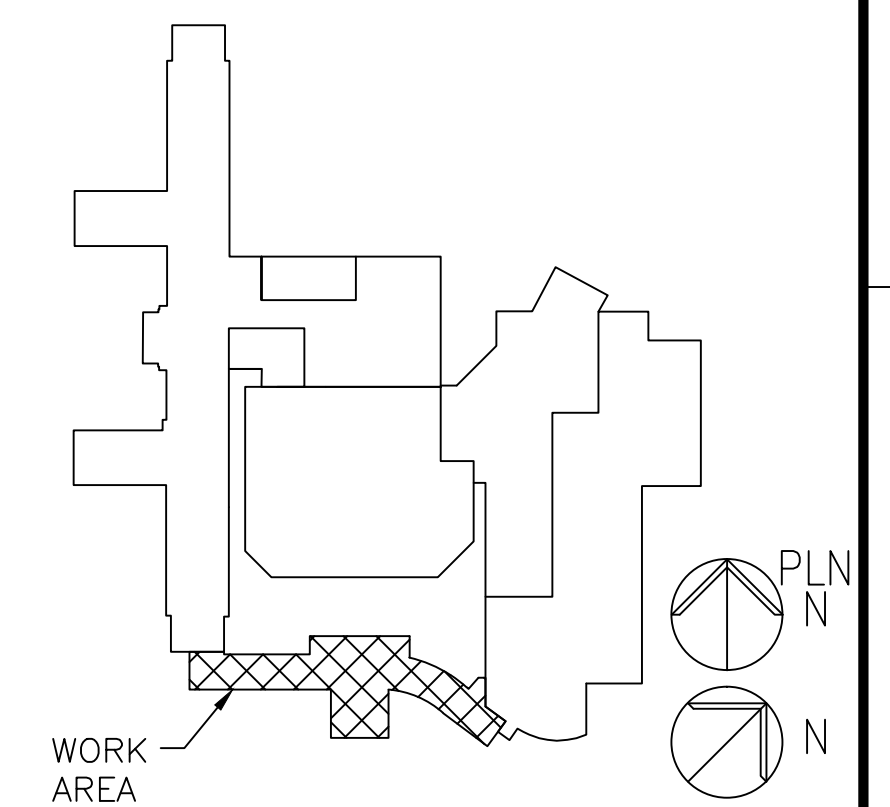
15 CONNECTION DETAIL  
1" = 1'-0"



16 CONNECTION DETAIL  
1" = 1'-0"



17 CONNECTION DETAIL  
1" = 1'-0"



		<div>CONSULTANTS:</div>		<div>ARCHITECT/ENGINEERS:</div> <div><div>PARADIGM</div><div>ENGINEERS AND CONSTRUCTORS</div><div>200 Erway Circle #201, Louisville KY 40299 – PH: 502.339.8511 – www.paradigmusa.com</div></div>		<div>Drawing Title:</div> STEEL COLUMN AND BEAM CONNECTION DETAILS	<div>Project Title:</div> NEW FRONT ENTRANCE BUILDING 1	<div>Project Number:</div> 595-11-125	<div>Office of Construction and Facilities Management</div> <div> Department of Veterans Affairs</div>
							<div>Building Number:</div> 1		
						<div>Approved Project Director:</div>	<div>Location:</div> LEBANON VAMC 1700 SOUTH LINCOLN AVE, LEBANON PA 17042-7529	<div>Drawing Number:</div> 1.S203	
<div>REVISION 1</div>	<div>03/18/14</div>					<div>Date:</div>	<div>Checked:</div> SL	<div>Drawn:</div> CTS	
<div>Revisions:</div>	<div>Date:</div>								



200 Envoy Circle #201, Louisville KY 40299 - PH: 502.339.8511 - www.paradigmusa.com