

ATTACHMENT F - HISTORICAL DATA

Please note that this information is intended to provide potential offerors an idea of historical information for estimation purposes only.

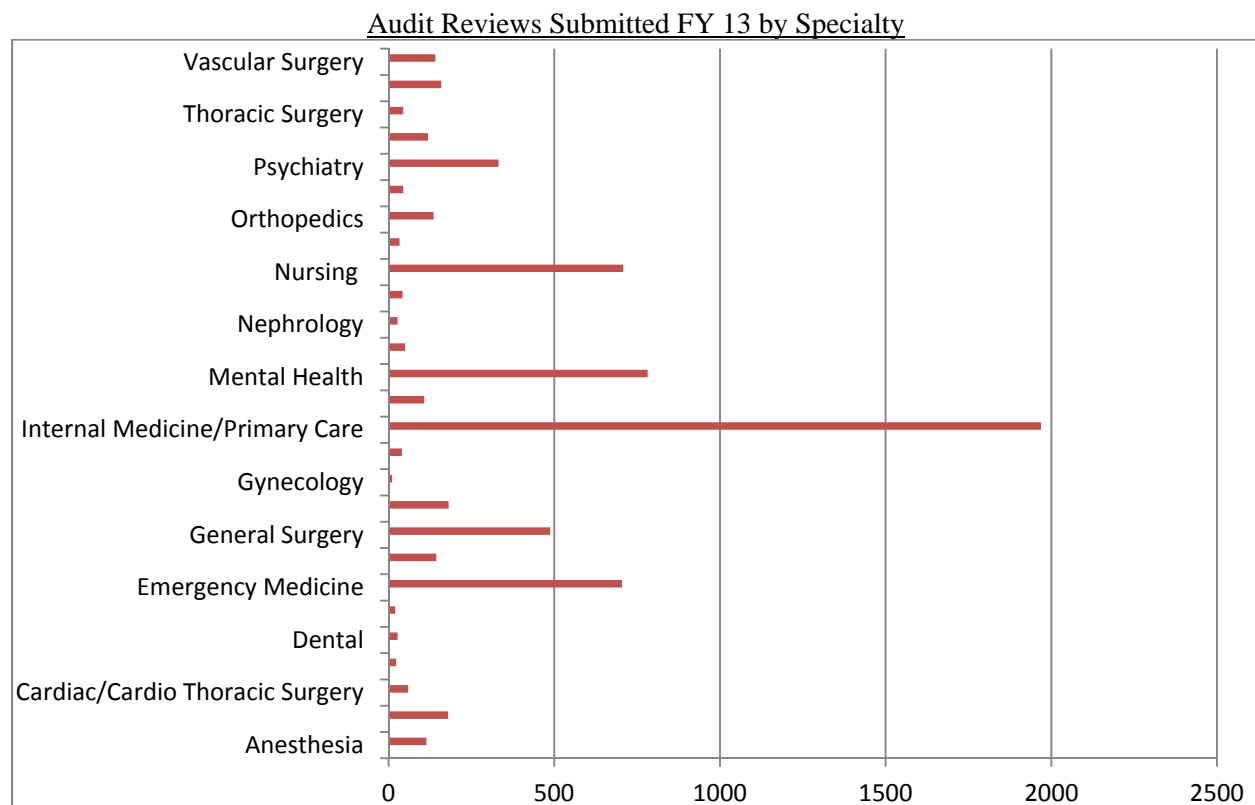
In Fiscal Year 2013 the Veterans Health Administration (VHA) completed Peer Reviews for Quality Management on a large scale. There were three types of reviews completed in FY 2013 including Audit Reviews, Facility Requested Reviews and Triggered Reviews. In total there were 7757 cases submitted for review with the breakdown being: 6,826 Audit cases, 901 Facility Requested Reviews and 30 Triggered Reviews.

It is important to note that this solicitation also includes Medical Advisory Opinions, which were not a part of the original Peer Review for Quality Management external contract. Being that this is a new service being offered to the field we have little to no historical data available for comparison.

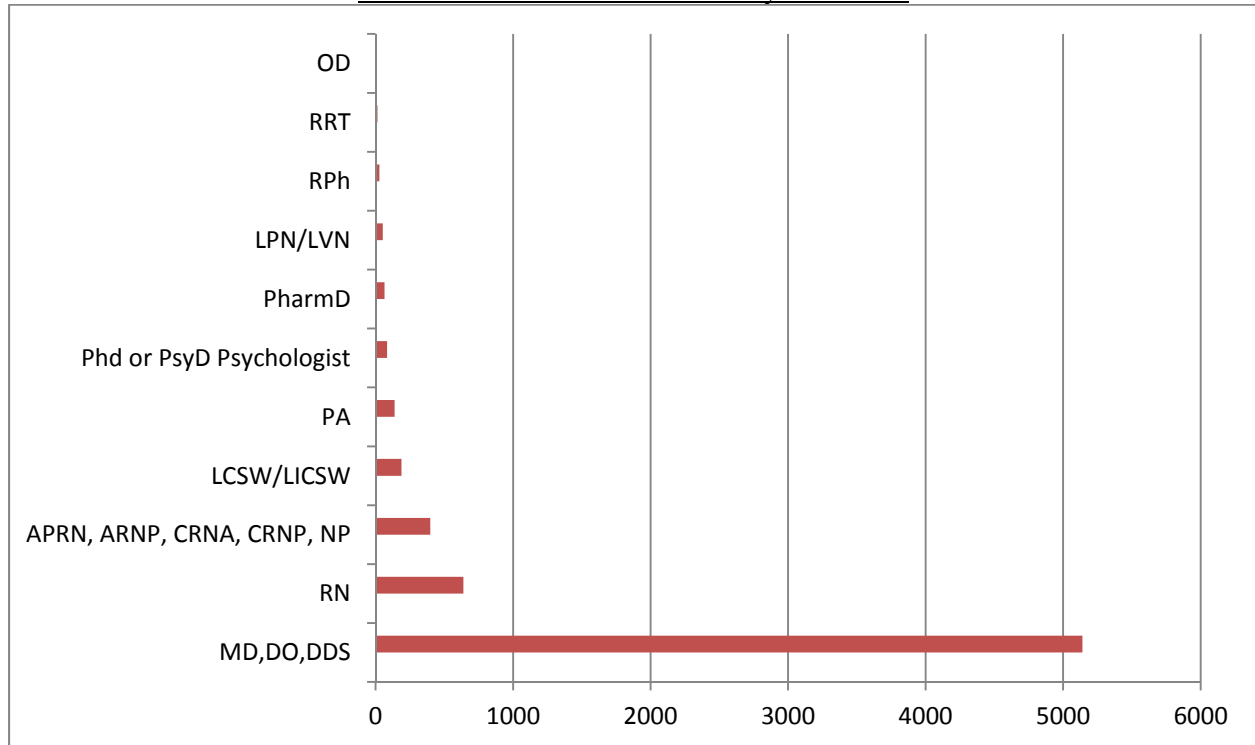
Audit Reviews

In FY 2013, approximately 75% (5141) of the audits pertained to providers with the following credentials: MD, DDS, DO. Other frequently reviewed provider credentials included RN's 9% (639), advanced practice RN's 6% (398), Clinical Social Worker's 3% (188), Physician Assistant's 2% (138), PhD/PsyD Psychologist's 1% (84), PharmD 1% (65), and LPN/LVN's at less than 1% (52).

By specialty, audits submitted were primarily made up of: Internal Medicine/Primary Care 28.8% (1969), Mental Health 11.5% (782), Nursing 10.4% (708), Emergency Medicine 10.3% (704), General Surgery 7.1% (488), Psychiatry 4.9% (332), Cardiology Invasive/ Non-Invasive 2.6% (180), Gastroenterology 2.1% (144), Urology 2.3% (159), and Vascular Surgery 2.1% (141).



Audit Reviews Submitted FY 13 by Credential

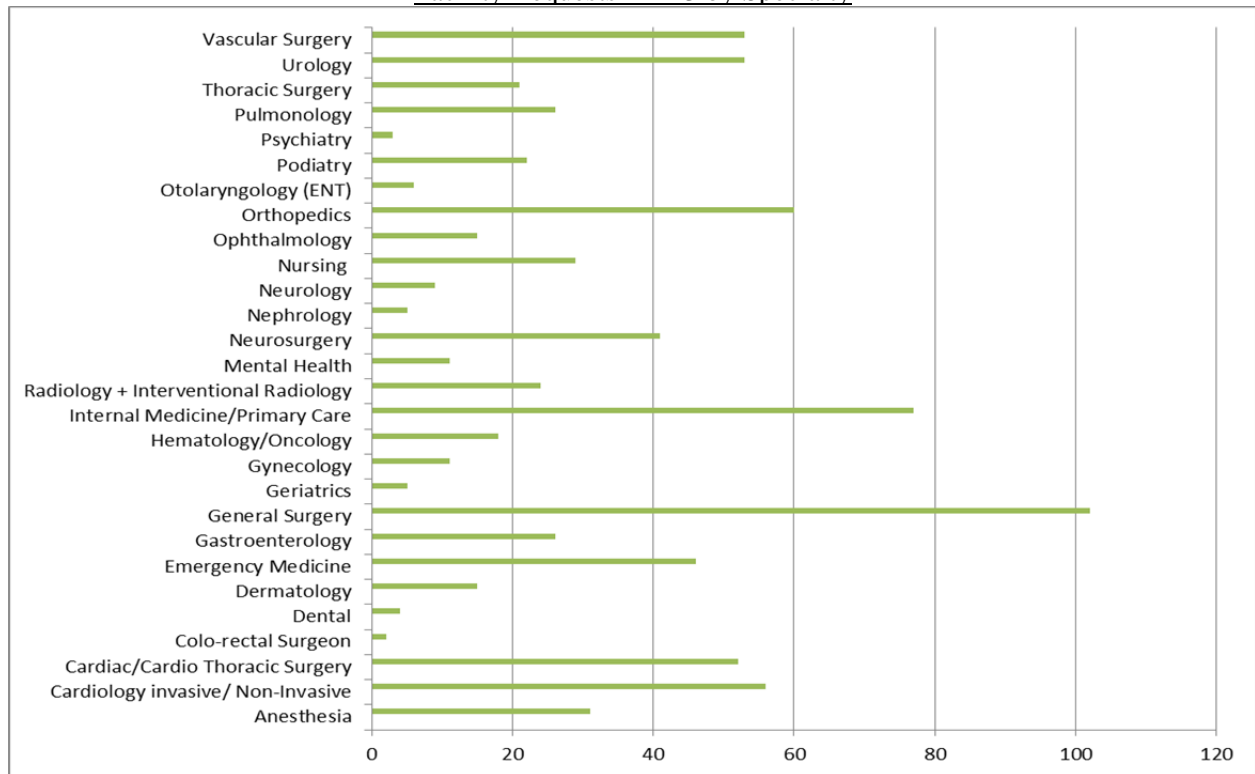


Facility Requested Reviews

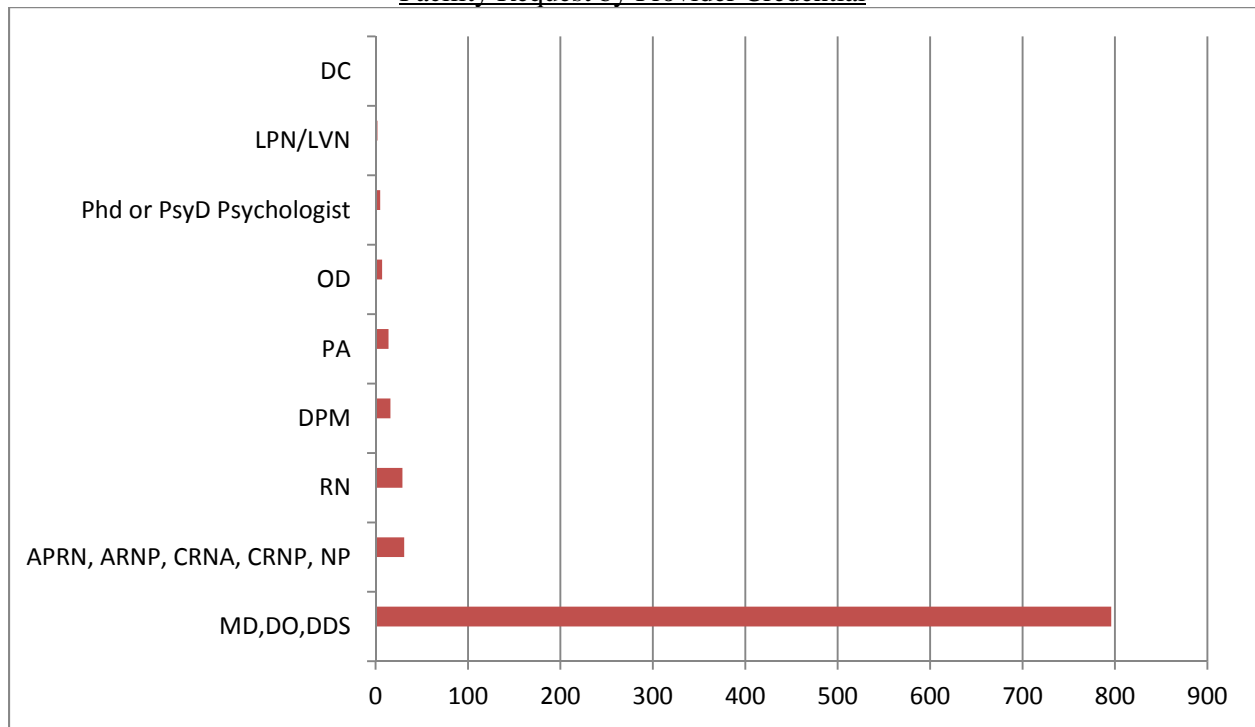
In FY2013, approximately 88.3% (796) of the Facility Requests pertained to providers with the following credentials: MD, DO, DDS. Other frequently reviewed provider credentials included Advanced Practice RN's 3.4% (31), RN's 3.2% (29), DPM 1.8% (16), Physician Assistants 1.6% (14), and less than 1% each Ophthalmologist's, Doctoral level Psychologist's, and LPN/LVN's.

By specialty, facility requests submitted were primarily made up of General Surgery 11.3% (102), Internal Medicine/Primary Care 8.5% (77), Orthopedics 6.7% (60), Cardiology invasive/ Non-Invasive 6.2% (56), Urology and Vascular Surgery at 5.9% (53) each, Cardiac/Cardio Thoracic Surgery 5.8% (52), and Neurosurgery 4.6%(41).

Facility Requests FY 13 by Specialty



Facility Request by Provider Credential



Triggered Reviews

By their nature triggered reviews are unexpected and the amount of triggered reviews done in FY 2013, 30, is not necessarily an average number. Given VHA is scrutinized at a high level it should be noted that this type of review could be called for at any time throughout the year.