

SHEET NOTES

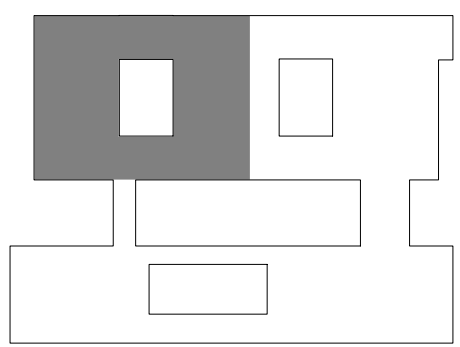
- 1. CEILING HEIGHTS INDICATED ARE A.F.F., U.O.N.
- 2. CENTER SUSPENDED CEILING GRID IN ROOM, U.O.N.
- 3. CENTER CEILING LIGHT FIXTURES IN CEILING AREAS U.O.N.
- 4. SEE FINISH SCHEDULE FOR CEILING FINISHES
- 5. SEE AE9.4.1 FOR TYPICAL CEILING DETAILS.
- 6. SEE EQUIPMENT REPORT FOR ADDITIONAL INFORMATION.
- 7. PROVIDE APPROPRIATE BACKING, SUPPORT AND LATERAL BRACING AS REQUIRED ON ALL CEILING MOUNTED EQUIPMENT
- 8. ALL CEILINGS ARE 9'-0" ABOVE FINISHED FLOOR, U.O.N.
- 9. SEE ELECTRICAL DRAWINGS FOR LOCATION OF ALL EXIT SIGNS.
- 10. SEE FIRE ALARM DRAWINGS FOR LOCATION OF ALL SMOKE DETECTORS.

RATED CONSTRUCTION	
	2 HR HORIZONTAL EXIT / SMOKE BARRIER
	2 HR OCCUPANCY SEPARATION
	1 HR RATED
	1/2 HR SMOKE PARTITION
	SMOKE PREVENTIVE PARTITION

KEYNOTES

- 3.08 EXPOSED STRUCTURE
- 3.10 UNDER CABINET LIGHTING TYPICAL. SEE ELECTRICAL DRAWINGS FOR FIXTURE TYPE
- 3.11 WALL MOUNTED CASEWORK
- 3.12 EXPANSION / SEISMIC JOINT
- 3.13 ROLL DOWN SHADE TYPICAL. SEE SPECIFICATIONS FOR TYPE. COORDINATE SHADE PULLS FOR ACCESSIBILITY WITH BRACED FRAMES WHERE APPLICABLE
- 3.21 EXTERIOR METAL PANEL SOFFIT
- 3.23 ROLL-UP FIRE DOOR. SEE AE9.3.8 FOR DETAILS
- 3.24 1HR SHAFT BOTTOM ENCLOSURE ABOVE
- 3.27 PNEUMATIC TUBE SYSTEM ABOVE. SEE SPECIFICATIONS. SEE ALSO AEB SERIES INTERIOR ELEVATIONS FOR LOCATION OF FUTURE STATIONS(NIC).
- 3.33 SMOKE PARTITION ABOVE, TYPE 0A4D
- 3.38 ACCESS PANEL, 24" X 30"
- 3.39 ACCESS PANEL, 30" X 30"
- 3.42 ACCESS PANEL, 26" X 30". LOCATION SPECIFIC TO NURSE STATION AT-500 ONLY.

CEILINGS	
	2 X 2 SUSPENDED LAY-IN CEILING, SEE 50/AE9.4.1
	FRAMED CEILING - FLAT GYPSUM BOARD, SEE 52/AE9.4.1
	1 HR FIRE RATED, SEE 30/AE9.4.2
	SUSPENDED LINEAR WOOD PLANK SYSTEM



FULLY SPRINKLERED
CONSTRUCTION DOCUMENTS

CONSULTANTS:

ARCHITECT/ENGINEERS:

SMITHGROUP
architecture engineering interiors planning
301 BATTERY STREET, 7TH FLOOR
SAN FRANCISCO, CA 94111
T 415.227.0100 F 415.908.0862
www.smithgroup.com

Associate Architect:
The Design Partnership LLP
Architects + Planners
1412 VAN NESS AVE., 2ND FLOOR
SAN FRANCISCO, CA 94109
T 415.777.3737 F 415.777.3476
www.dpsf.com

Drawing Title
RCP LEVEL 1 AREA A

Approved: Project Director

Milan Arskic

Project Title
**CENTERS FOR AMBULATORY CARE,
POLYTRAUMA AND BLIND REHABILITATION
Polytrauma and Blind Rehabilitation Center**

Location
3801 Miranda Ave., Palo Alto CA
Date
20 SEPTEMBER 2011

Checked
JG

Drawn
NW

Project Number

640-424

Building Number

500

Drawing Number

AE3.1.1A

Office of
Construction
and Facilities
Management

