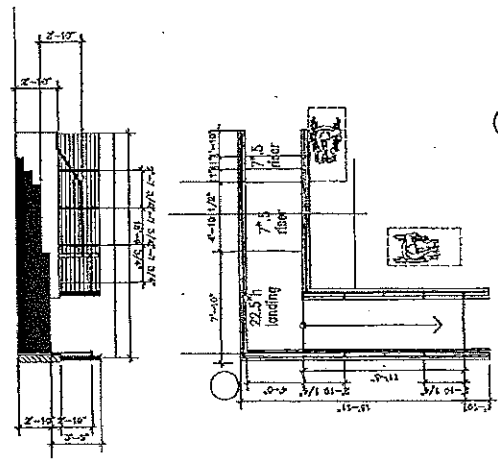
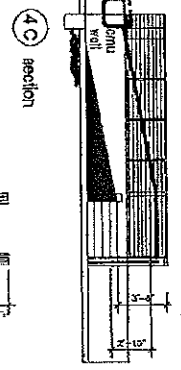
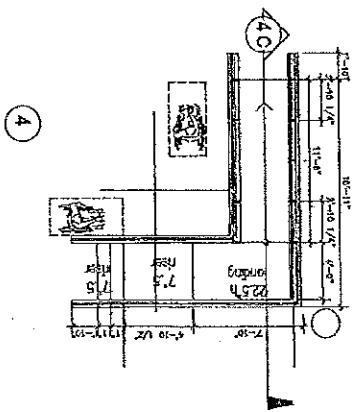
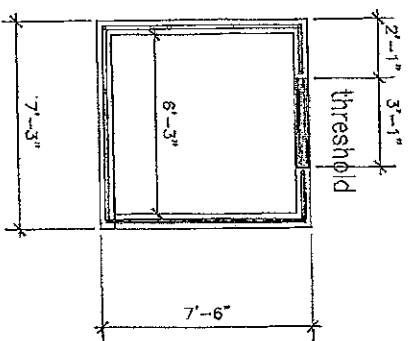


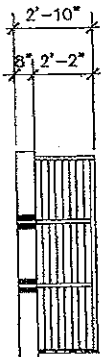
oblique course



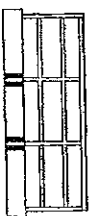


Option 1 - Core Mounted
Installation -
Option 2 - Surface Mounted
Standard Base With Moisture Barrier
Gasket Between Bracket And
Substrate

Ars200 Series



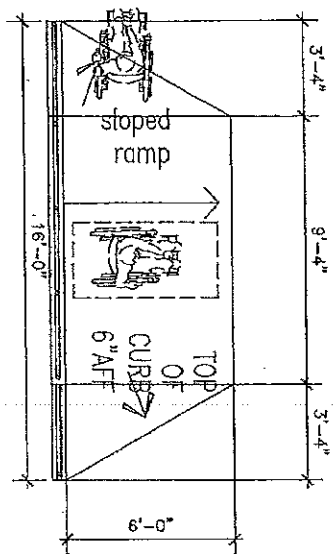
option b



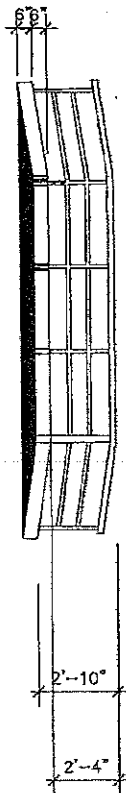
option a

obstacle course 2

Aluminum Railing System With
Surface Mount Post With 1/8"
Cable
Option 2 - 3/4" Square Pickets
Option 2 Powder Coated Galvanized
Steel.

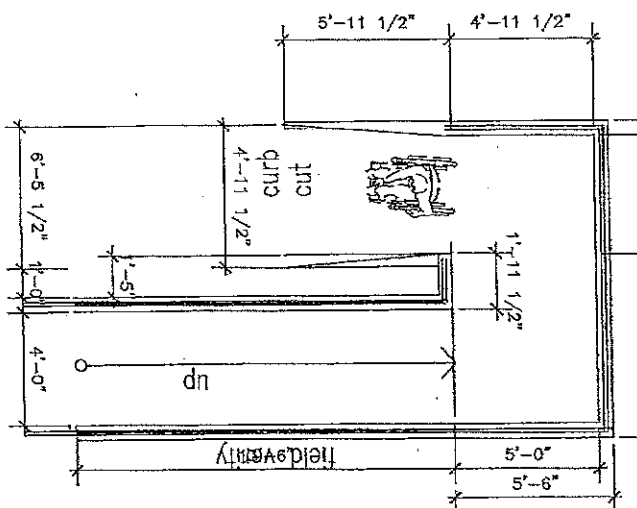


Top Of Curb From
Sidewalk -- 12" off

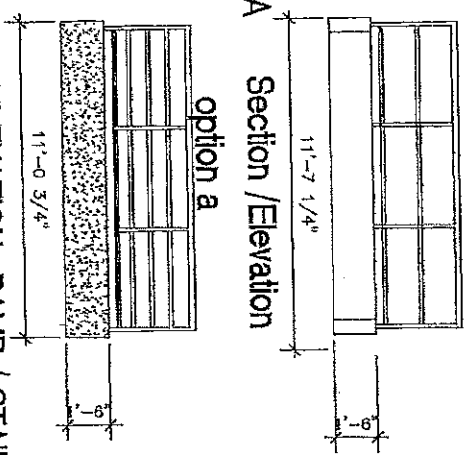


obstacle course 3

7A

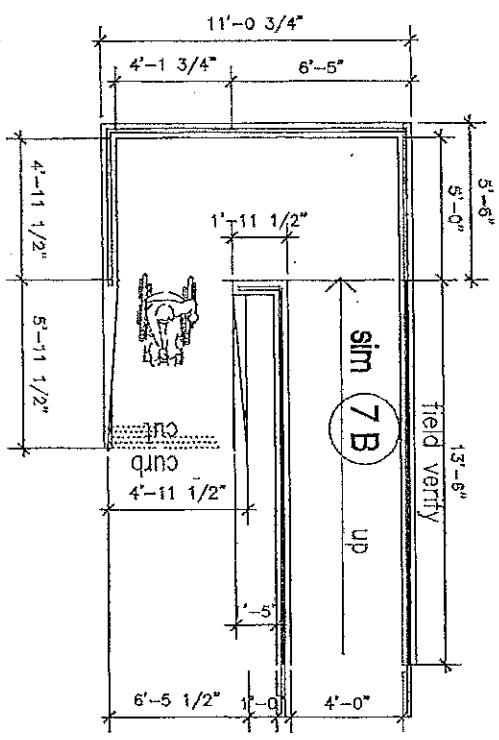


7A Section / Elevation

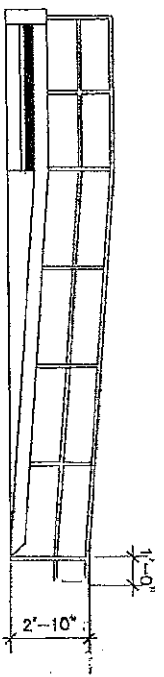


ELEVATION- RAMP / STAIR

7C



7B 7C Section / Elevation



7B 7C obstacle course 4 sim