
ADDENDUM # 1
Date of Addendum: March 21, 2014

NOTICE TO ALL BIDDERS AND PLANHOLDERS

The Contract Documents for the above-referenced Project are modified as set forth in this Addendum. The original Contract Documents and any previously issued addenda remain in full force and effect, except as modified by this Addendum, which is hereby made part of the Contract Documents. Bidder shall take this Addendum into consideration when preparing and submitting a bid and make acknowledgement of its contents in accordance with the bidding document requirements.

1.0 – SPECIFICATIONS

Item	Section No.	Description of Change
1.1		REFER TO RFI RESPONSES UNDER SEPARATE COVER.

2.0 – DRAWINGS

Item	Drawing No.	Clarification Dwg. No.	Description of Change
2.1			REFER TO RFI RESPONSES UNDER SEPARATE COVER.
2.2	AE-101	CD A-1	Demolition/salvage requirements for Room 1454
2.3	AE-101	CD B-1	Locations/types of vinyl tile in Room 1456

3.0 – QUESTIONS AND ANSWERS

The following questions and answers are provided as a matter of information to clarify issues raised about the Contract Documents. To the extent that changes to the Contract Documents are required based on the questions received, the Contract Documents have been modified as noted above in the Specifications and Drawings sections of this Addendum.

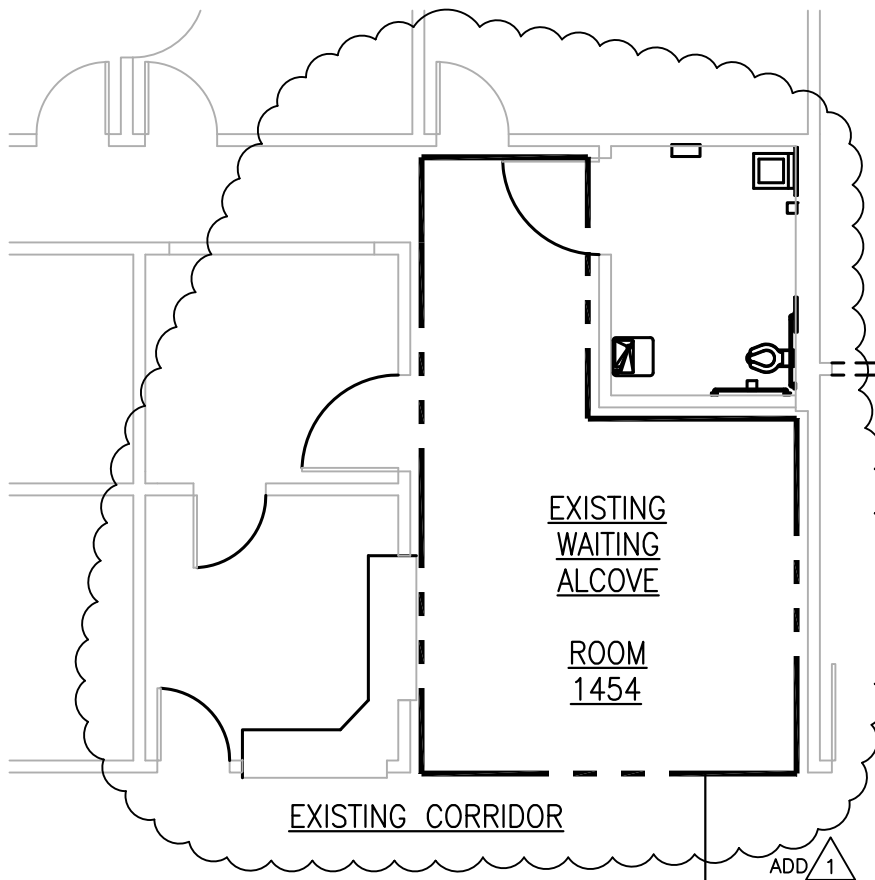
3.1	REFER TO RFI RESPONSES UNDER SEPARATE COVER.
-----	---

4.0 – INFORMATION

The following item(s) are provided as a matter of information only to all bidders and plan holders and do not modify or become part of the Contract Documents.

Item	Description
4.1	REFER TO RFI RESPONSES UNDER SEPARATE COVER.

END OF ADDENDUM



ALCOVE SALVAGE PLAN



$\frac{1}{4}" = 1'-0"$

NOTE:

CAREFULLY REMOVE AND SALVAGE ALL EXISTING ACRYLIC WALL PANELS, LIGHT FIXTURES, CEILING TILES, CHAIR RAIL AND TERRAZZO FLOOR TILE, AND SET ASIDE IN PROTECTED AREA AS DIRECTED BY THE V.A. PROJECT MANAGER.

ADD #1

ADD 1

 PREVIOUSLY MITIGATED VCT
 UNMITIGATED VCT

EXISTING ROOM #1456

ASBESTOS FLOOR ABATEMENT NOTICE

THE CONTENT OF THIS DRAWING IS PROVIDED FOR INFORMATION PURPOSES ONLY. THE CONTRACTOR SHALL INCLUDE THE COSTS OF MITIGATION OF ANY HAZARDOUS MATERIAL IDENTIFIED DURING THE COURSE OF CONSTRUCTION WHETHER SHOWN ON THIS DRAWING OR NOT.

ADD #1