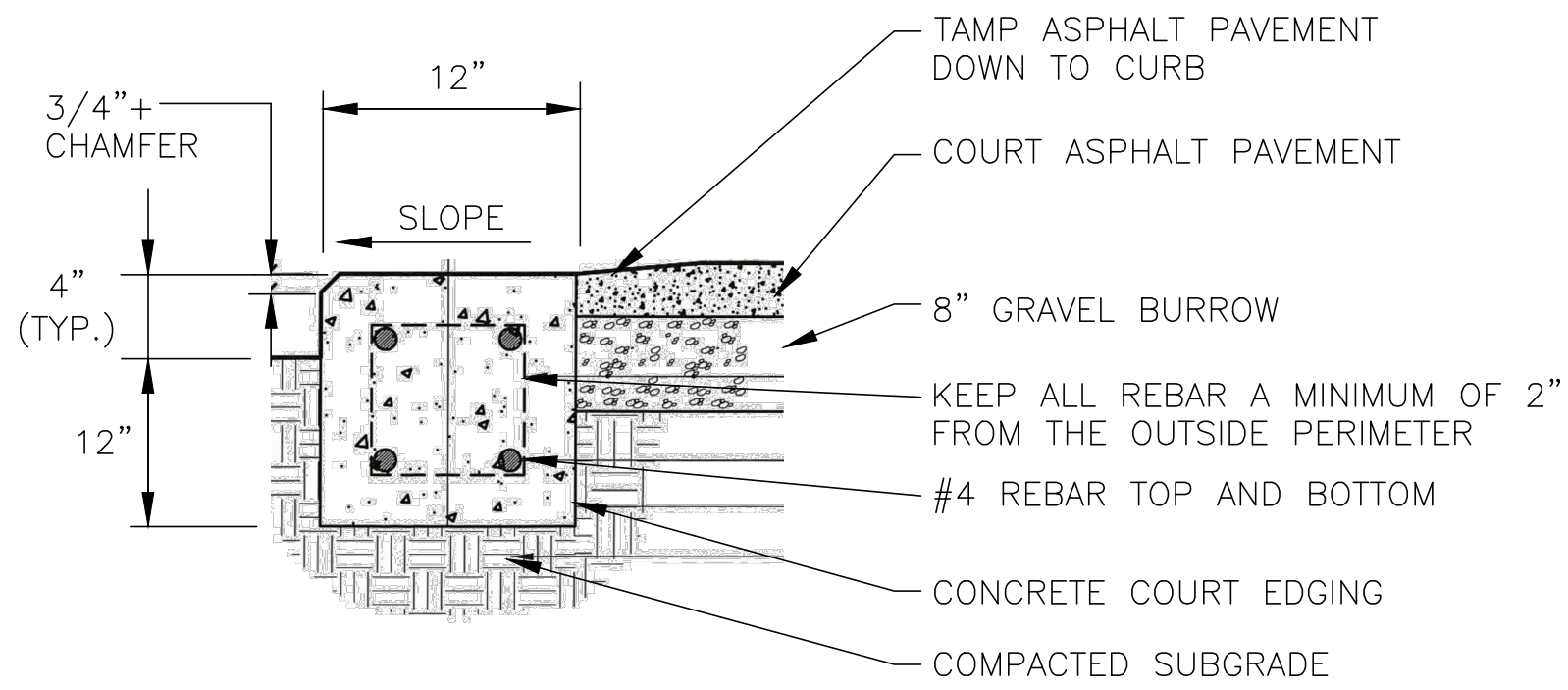
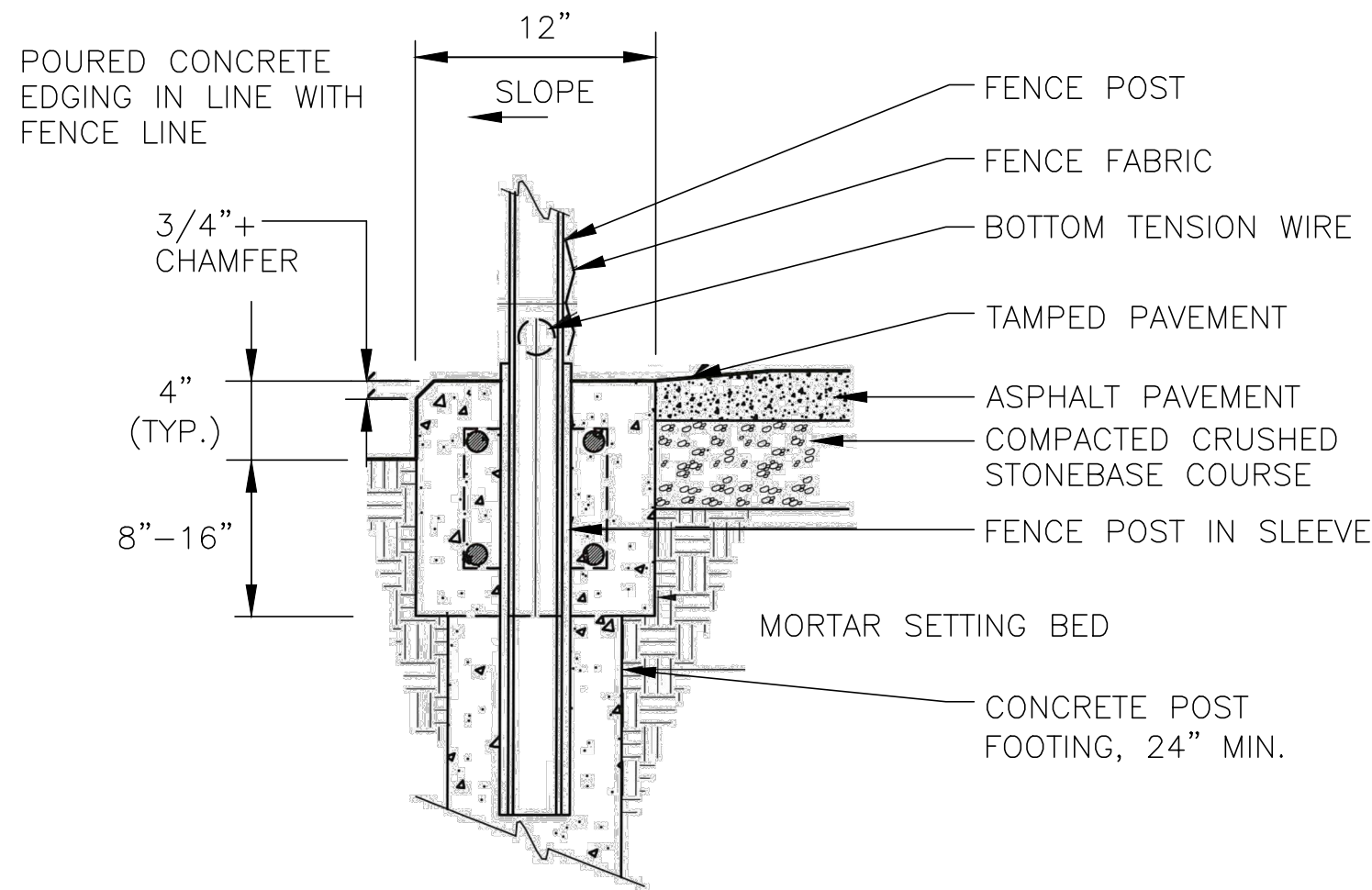


1
L301
ASPHALT COURT SECTIONS
SCALE: NOT TO SCALE



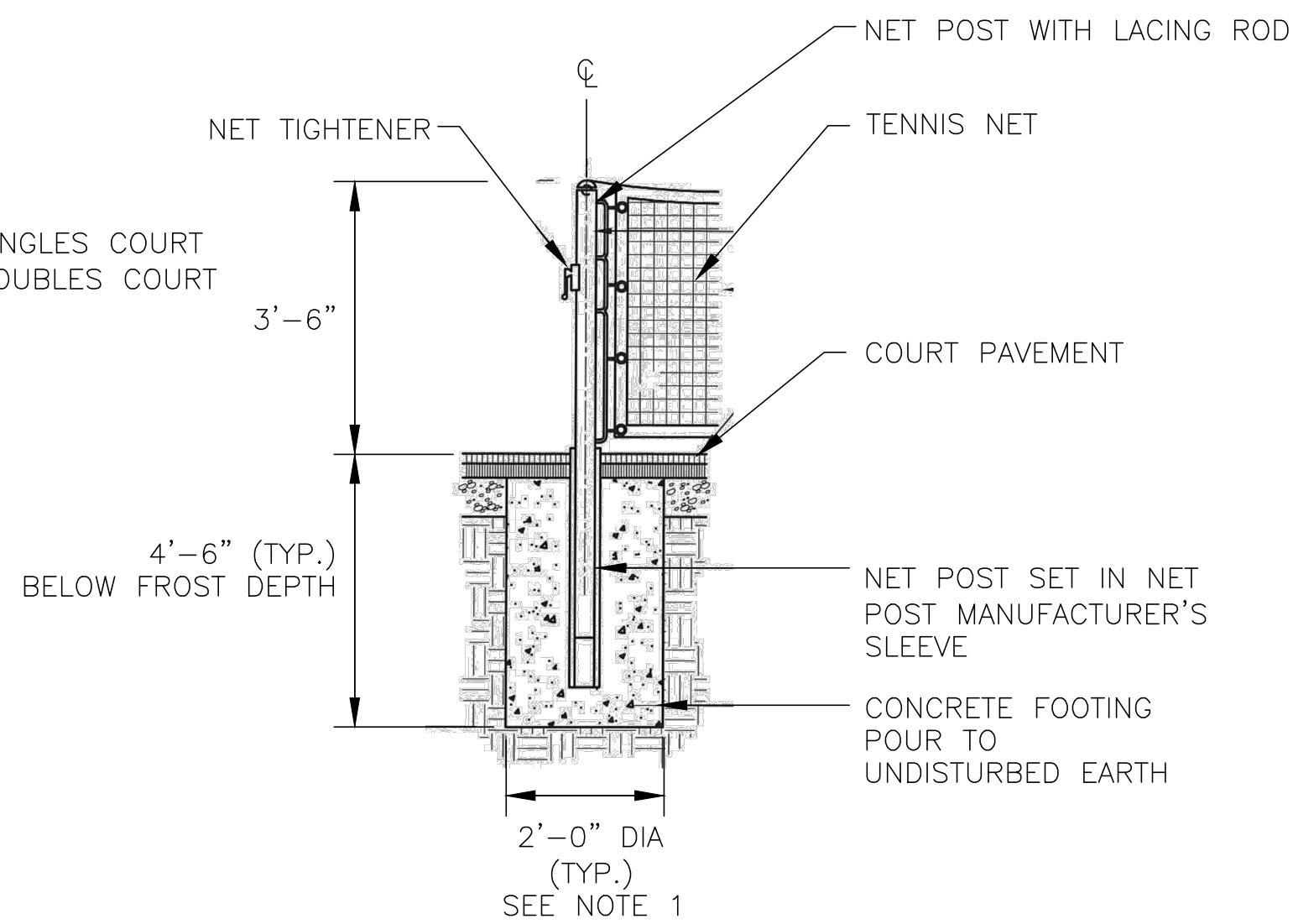
2
L301
POURED CONCRETE EDGING FOR ASPHALT COURT
SCALE: NOT TO SCALE



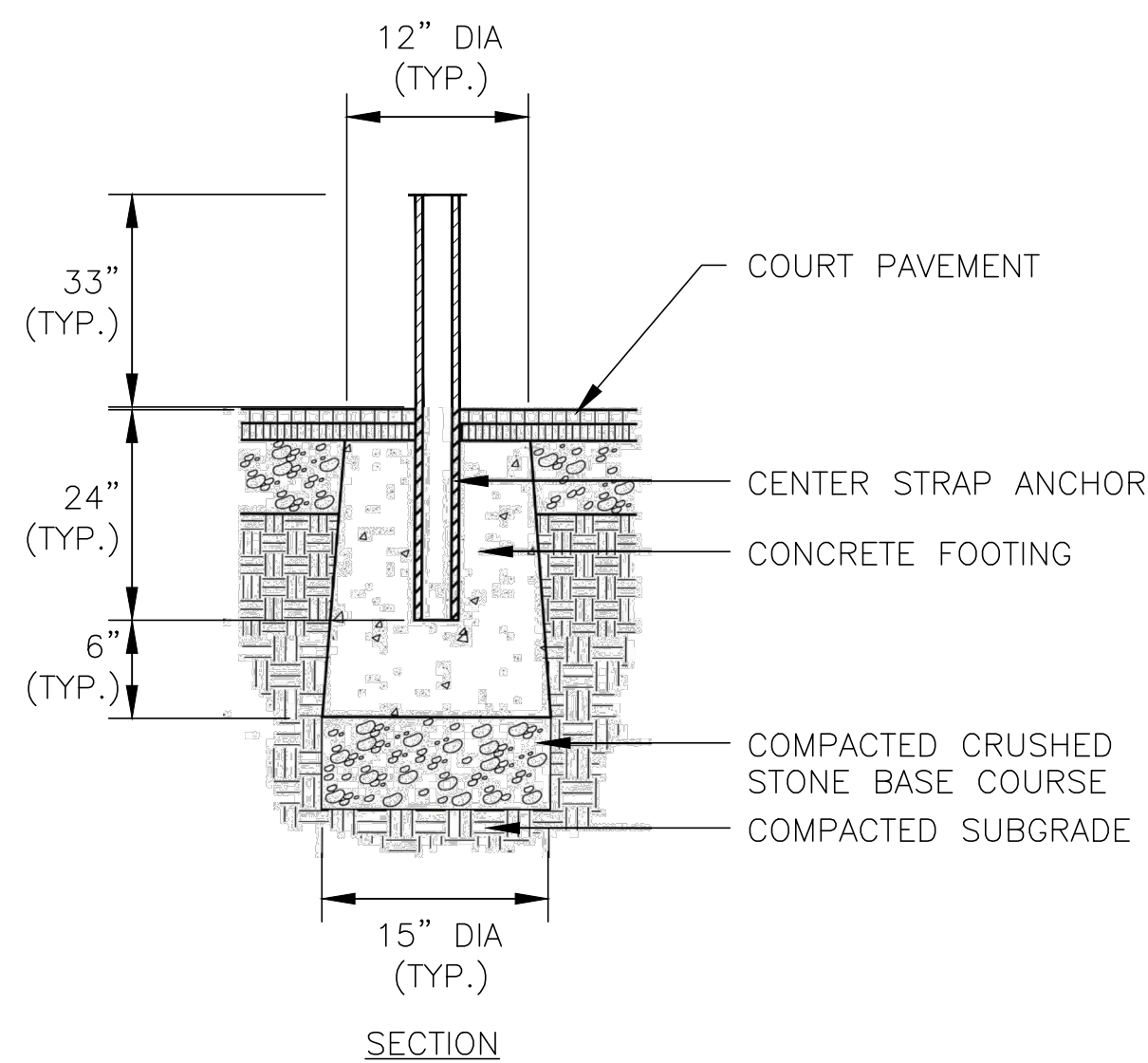
3
L301
FENCE POST SECTIONS - TYPICAL CLF
SCALE: NOT TO SCALE

NET POST LOCATIONS:

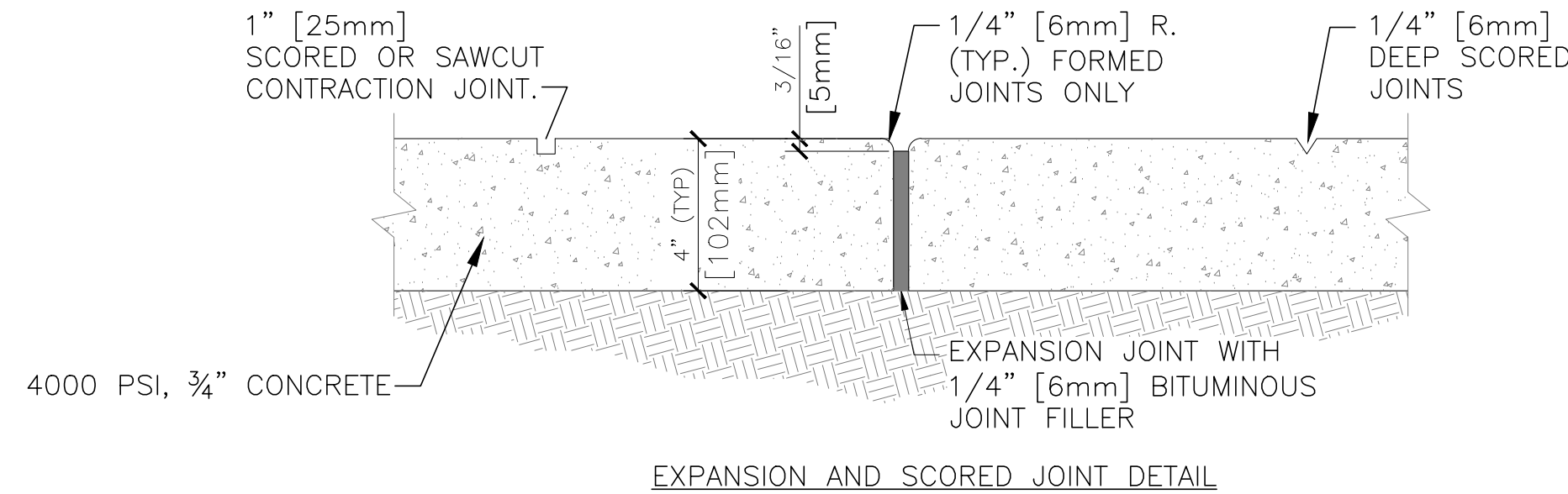
33'-0" C to C 78' SINGLES COURT
42'-0" C to C 78' DOUBLES COURT



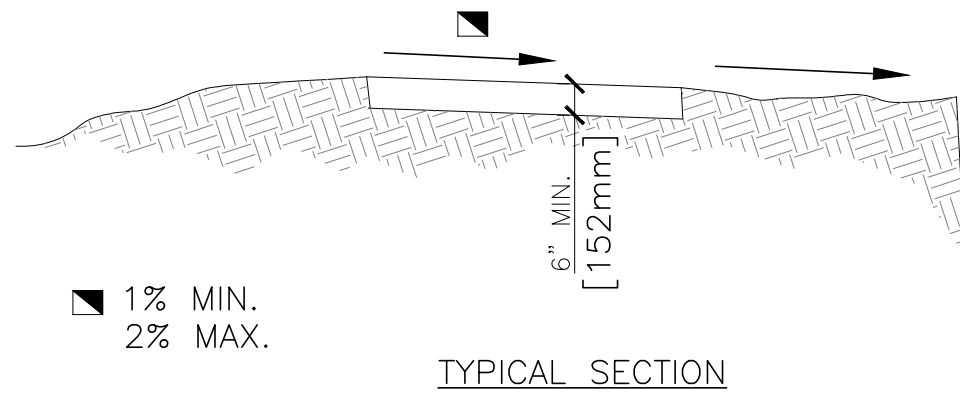
4
L301
TENNIS NET POST FOOTING - CYLINDER SHAPE
SCALE: NOT TO SCALE



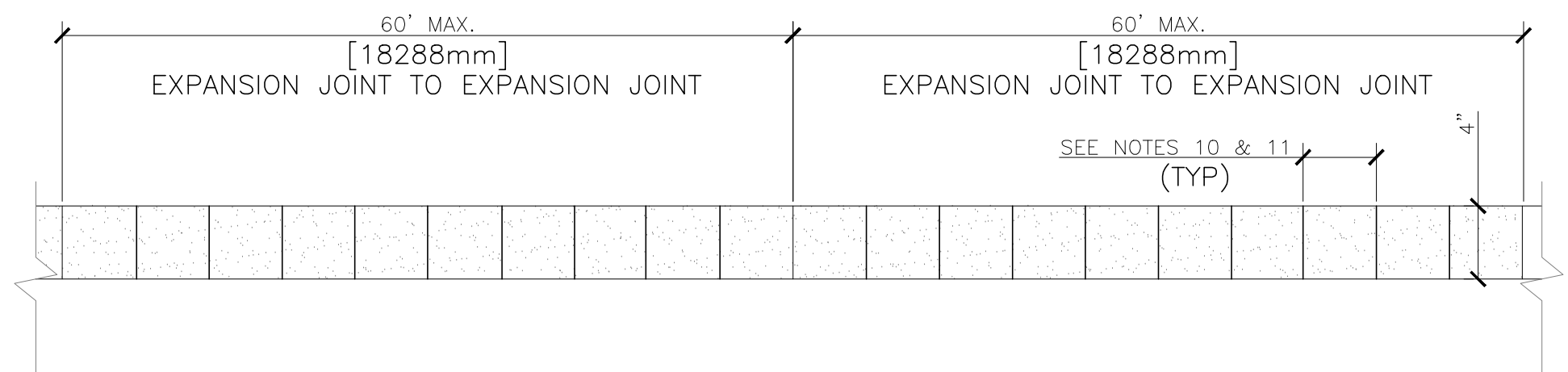
5
L301
TENNIS NET CENTER STRAP ANCHOR
SCALE: NOT TO SCALE



EXPANSION AND SCORED JOINT DETAIL

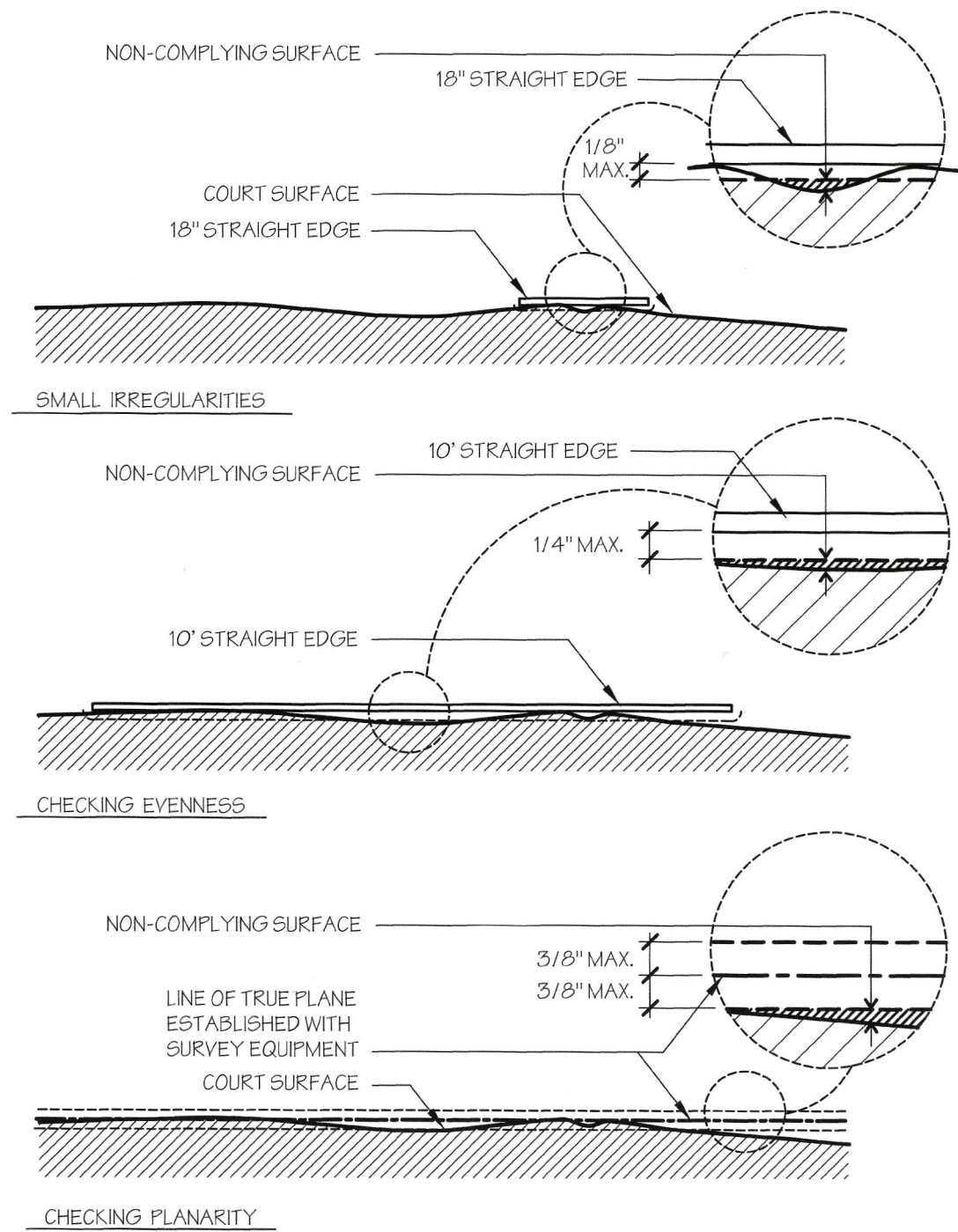


TYPICAL SECTION



- NOTES:
1. REMOVE MINIMUM 6" SUBGRADE.
 2. INSTALL MINIMUM 6" CRUSHER RUN.
 3. TAMP SUB-BASE.
 4. FORM SIDEWALK WITH WOOD OR METAL.
 5. SIDEWALK WIDTH AS SHOWN ON L101.
 6. NEW SIDEWALK SHALL BE 5" THICK.
 7. NEW PORTION SHALL MATCH THE HEIGHT OF EXISTING SIDEWALK, NO BUMPS UP OR DOWN (1/16" OR LESS ACCEPTABLE).
 8. INSTALL WIRE MESH (6-6 W2.0xW2.0).
 9. PLACE ASPHALT-IMPREGNATED JOINT MATERIAL BETWEEN NEW CONCRETE AND EXISTING.
 10. TOOL IN CONTROL JOINTS AT 4'-0" O.C. WITH A GROOVER, FULL FROM ONE SIDE TO THE OTHER.
 11. AFTER CURE, SAW-CUT THESE JOINTS 2" DEEP.
 12. TRUCKS WILL BE REJECTED ONCE 2 HOURS HAVE ELAPSED FROM THE MIX START PRINTED ON THE TICKET.
 13. MESH SHALL BE PULLED UP DURING PLACEMENT TO BE IN THE MIDDLE OF THE SLAB.
 14. SCREED SIDEWALK THEN FLOAT WITH A MAGNESIUM FLOAT. SURFACE SHOULD BE HAND WORKED TO ENSURE IT IS TIGHT WITH NO STONE AT THE TOP.
 15. APPLY A LIGHT BROOM FINISH FROM EDGE TO EDGE, AFTER INITIAL SET, NO CLUMPING (TOO WET).
 16. EDGE SIDEWALK BEFORE AND AFTER BROOMING.
 17. SEAL CONCRETE WITH A SPRAY ON SEALER.

6
L301
CONCRETE SIDEWALK
NOT TO SCALE



7
L301
IRREGULARITIES, EVENNESS AND PLANARITY DETAIL
SCALE: NOT TO SCALE

		Engineer:		Approved: A.F.G.E.		Date	Approved: Fire Chief	Date	Approved: Energy Engineer	Date	Drawing Title	Project Title	Date		
<div><div><div>EVERETT ENGINEERS</div><div>1740 MASSACHUSETTS AVE., SUITE D BOXBOROUGH, MA 01710 PHONE: 978-268-3711 FAX: 978-268-3712</div></div><div><div></div><div></div></div></div>		Approved: Logistics Manager.		Date	Approved: Interior Designer	Date	Approved: Safety Officer	Date	Approved: M&R Foreman	Date	SECTIONS	RENOVATE TENNIS AND BASKETBALL COURTS	3/25/14		
		Approved: Infection Control Mgr.		Date	Approved: Info. Sys.	Date	Approved: Industrial Hygienist	Date		Date		Approved: Eng. Project Supervisor	Date	Project No. 528A6-13-636	
		Approved: Chief Security		Date	Approved: Women's Health Rep	Date	Approved: Space Owner	Date		Date		Building No. N/A	Checked RAE	Drawn JPS	DRAWING NO. VMC-528A6-13-636
													Location BATH, NEW YORK	L301	Dwg. 7 Of 11
<div><div></div><div>ADDENDUM 1</div><div>Revisions</div></div>		3/25/14 Date													

