

Level 2  
112' - 7 1/4"

Wall System:  
Spandrel glazing in aluminum frame  
Air space  
2" Rigid insulation  
8" CMU, Ref. Structural

Fill voids with  
acoustic material  
Slip track

Deduct Alternate 3A  
Delete exterior wall metal furring,  
insulation, and vapor retarder at  
Undeveloped S107

107'-4"  
T.O. Window

SEE DETAILS

Entire window assembly,  
including frame and glazing  
panels, are to be  
removeable for future work

Storefront  
Material

Level 1  
100' - 0"

Finished grade,  
Ref. Civil

2" Rigid insulation

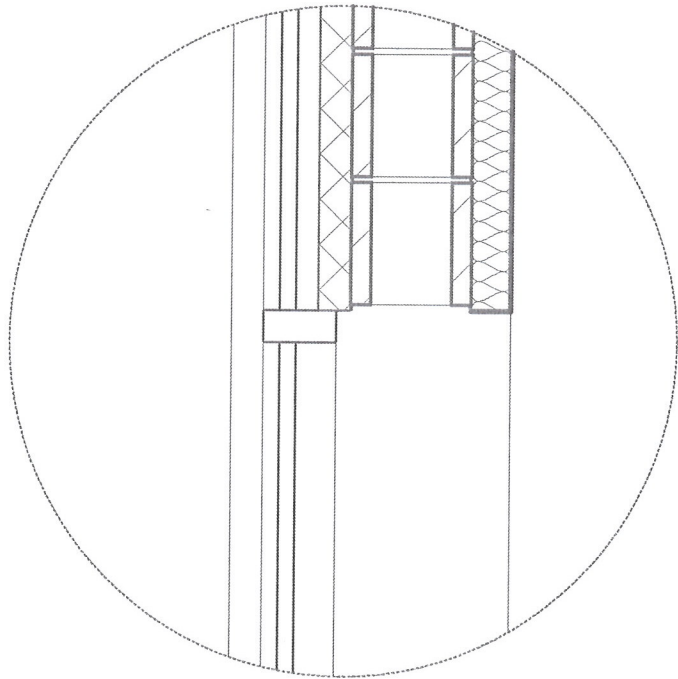
Concrete foundation,  
Ref. Structural

SECTION 4/A311

VAST

3/27/2014

AS SHOWN ON →  
BID DOCS



ADD 2ND HORIZ. FRAME,  
ANCHOR TO BUDG.

THIS CAN BE THE  
REMOVABLE FRAME

