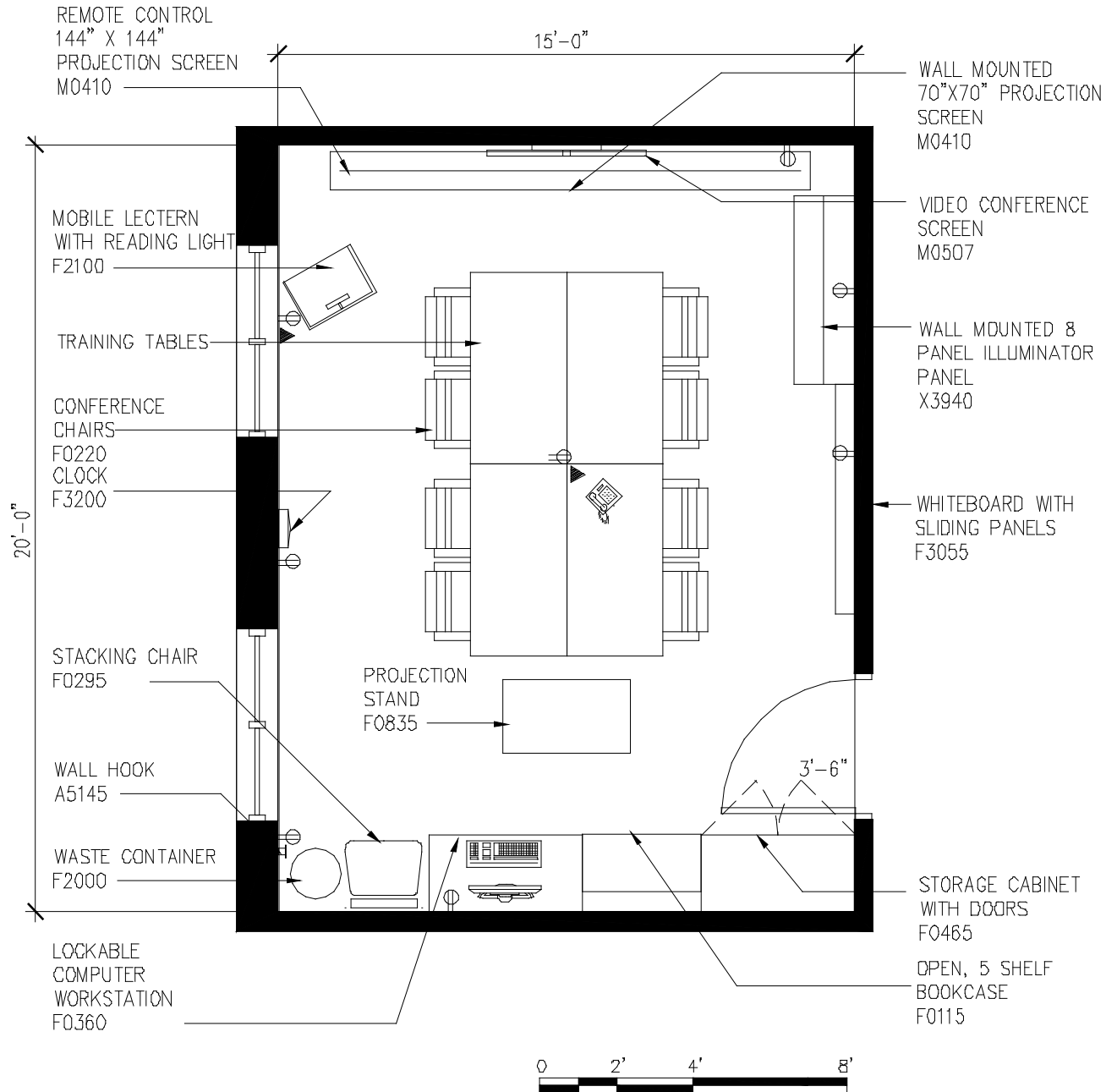
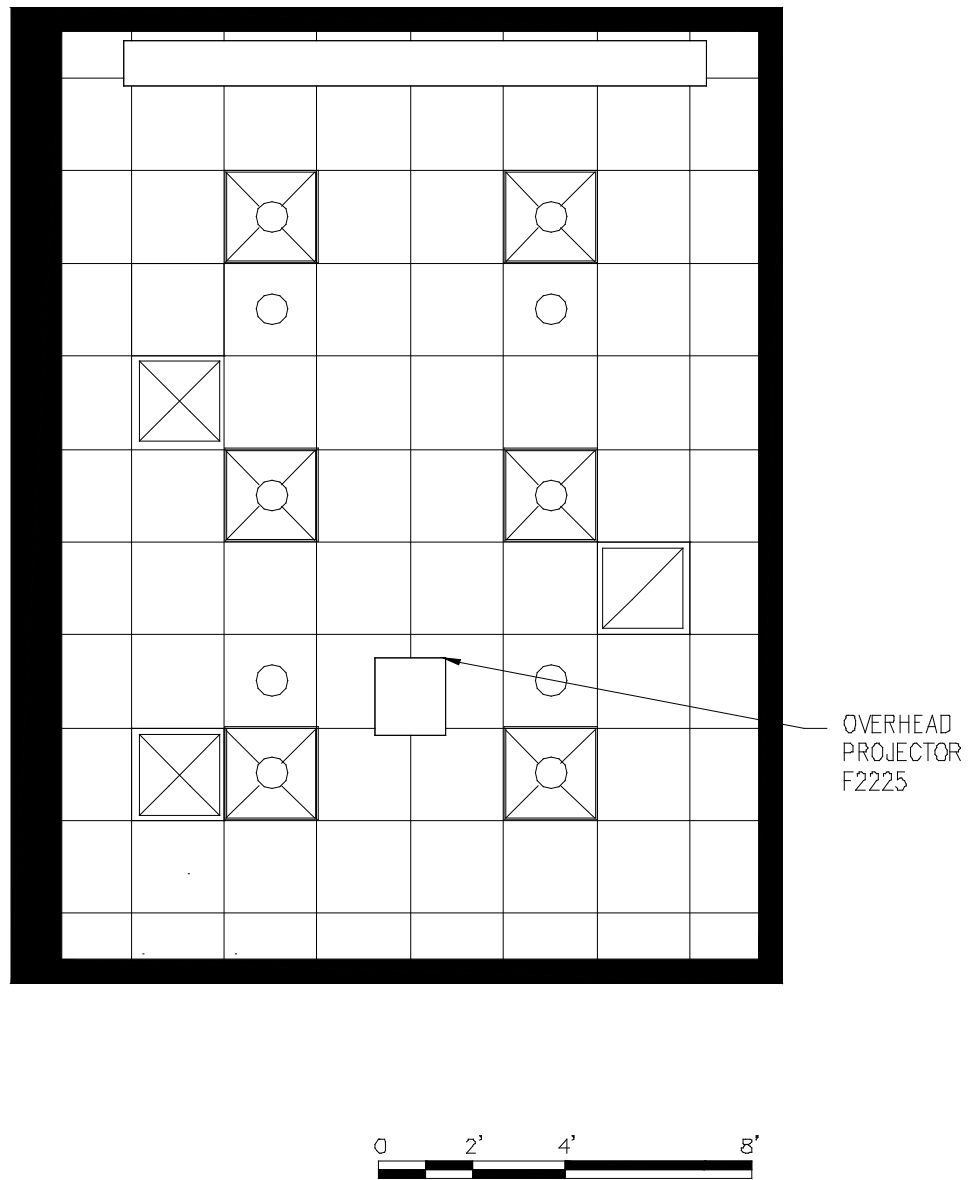


## 6.9 Resident Education / Conference / Group Room (CRA02) - 300 NSF [27.9 NSM] Floor Plan



6.9 Resident Education / Conference / Group Room (CRA02) -  
300 NSF [27.9 NSM]  
Reflected Ceiling Plan



## 6.9 Resident Education / Conference / Group Room (CRA02) - 300 NSF [27.9 NSM]

**Function:** This space will be used for education programs as well as conferences or group therapy meetings on a scheduled basis. Audio-visual technology allows remote communication.

**Note:** Where VA standard items are shown, non-institutional & sustainable options should be considered if feasible.

### Space Requirement:

Resident Education / Conference / group Room: 300 NSF [27.9 NSM]

### Resident Education / Conference / Group Room

#### Architectural:

Floor Finish:	Sheet vinyl, linoleum or rubber flooring.
Base:	Rubber Base
Wall Finish:	Gypsum Board - Painted
Ceiling:	Acoustic Tile with clips or Gypsum Board with Acoustical Plaster
Ceiling Height:	9'-6" Min
Noise (STC Rating):	Sound insulation from adjacent spaces critical. Provide STC 40 as a minimum and STC 45 for walls adjacent to resident rooms, group therapy rooms and conference rooms.
Hardware:	VA Hardware Set # 40
Doors:	3'-6" x 7'-0" wood with ½ light glazing if partitions are utilized.
Windows:	Exterior window units shall have integral blinds for sun control located between layers of glazing. Inside layer shall be laminated glass. If operable, window unit must not open more than 4". Interior glazing shall be laminated glass.

#### Mechanical:

Inside Design Condition:	70 degrees F (21C) to 75 degrees F (24C) year round 30% -50% Relative Humidity
Min. Air Supply Air Change/Hr:	6
Return Air:	Permitted
Exhaust Air:	Not Required
Room Noise Level:	NC 35
Individual Temperature Control:	Required
Room Air Balance:	Neutral.

#### Electrical:

Lighting Levels:	
Gen. Illumination:	50 fc
Suppl. Illumination:	Dimmable Fluorescent down lights
Emerg. Illumination:	As required
Emergency Power:	As required
Receptacles:	As required

## 6.9 Resident Education / Conference / Group Room (CRA02) - 300 NSF [27.9 NSM]

### Equipment Table:

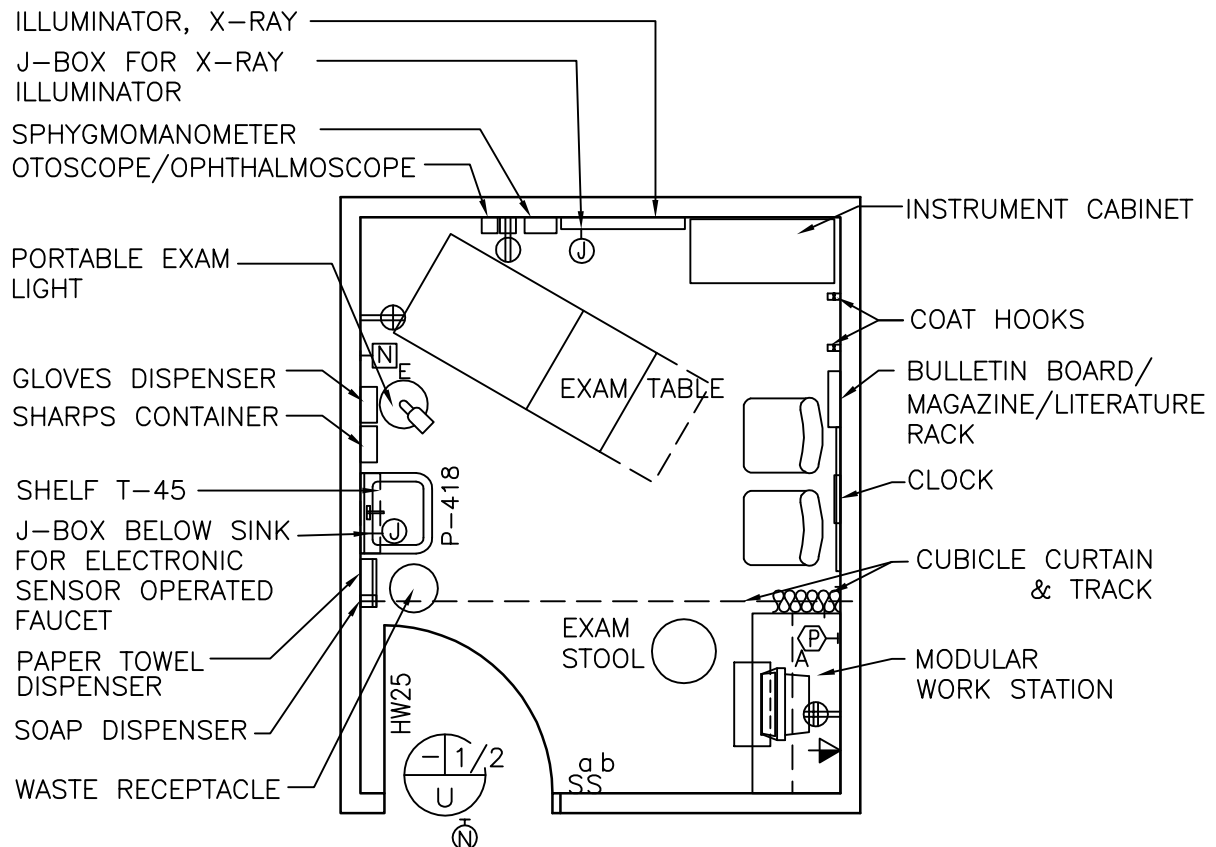
See Legend of Symbols in Section 1.6

SYMBOL	QUANTITY	AI	DESCRIPTION
			<b>Note: Where VA standard items are shown, non-institutional &amp; sustainable options should be considered if feasible.</b>
JSN A1010	2	CC	TELECOMMUNICATION OUTLET
JSN A1011	1	CC	TELEPHONE, 1 LINE
JSN A6046	1	VV	ARTWORK, DECORATIVE, WITH FRAME (NOT SHOWN)
JSN F0115	1	VV	BOOKCASE WITH FIVE (5) ADJUSTABLE SHELVES
JSN F0220	AR	VV	CHAIR, CONFERENCE
JSN F0295	AR	VV	CHAIR, STACKING
JSN F0465	1	VV	CABINET, STORAGE, 2 DOOR, 5 SHELVES
JSN F0360	1	VV	WORKSTATION, COMPUTER, ENCLOSED, WITH LOCK
JSN F0755	AR	VV	TABLES, CONFERENCE, WOOD
JSN F0835	1	VV	STAND, PROJECTION
JSN F2000	1	VV	WASTE CONTAINER, ROUND, METAL
JSN F2100	1	VV	LECTERN, MOBILE, WITH READING LIGHT
JSN F2225	1	VV	PROJECTOR, OVERHEAD
JSN F3055	1	VV	WHITE BOARD, WITH SLIDING PANELS
JSN F3200	1	VV	CLOCK, BATTERY OPERATED, 12" DIAMETER
JSN MO410	1	CC	SCREEN, PROJECTION, 70" x 70"
JSN M057	1	VV	VIDEO TELECONFERENCING SYSTEM
JSN M1801	1	VV	PC COMUTER WITH KEYBOARD

**TABLE 6.9**  
*Resident Education / Conference / Group Room*

# Exam Room (Multi-Purpose) (EXRG3)

## Floor Plan



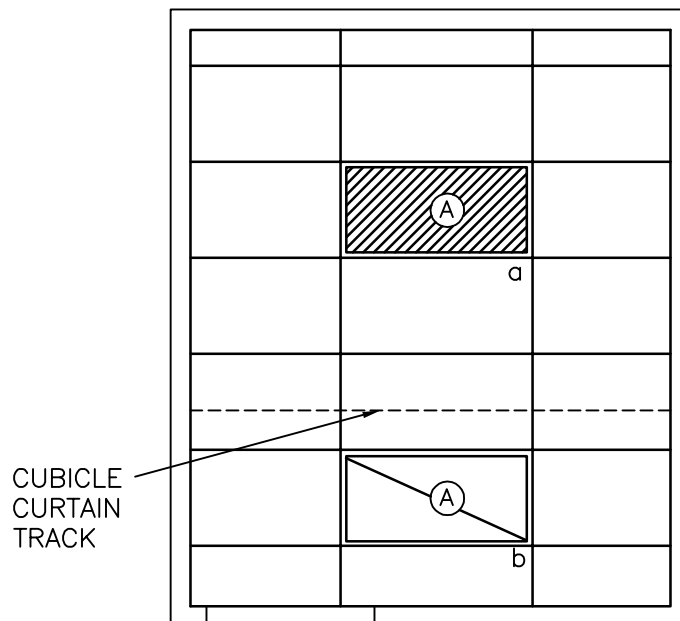
120 NSF/ 11.2 NSM (Shown above)  
Audiology similar: 150 NSF/ 13.9 NSM

SCALE  $\frac{1}{4}" = 1'-0"$  M2 1 0 1 2 4Ft

NOTE: Guide plates are graphical representations of selected room types, illustrating the integration of space, components, systems, and equipment. They provide typical configurations and general technical guidance, and are not intended to be project specific. Specific infrastructure design requirements are contained in VA Design Manuals and Space Planning Criteria located in the VA Technical Information Library.

# Exam Room (Multi-Purpose) (EXRG3)

## Reflected Ceiling Plan



120 NSF/ 11.2 NSM (Shown above)  
Audiology similar: 150 NSF/ 13.9 NSM

SCALE  $\frac{1}{4}" = 1'-0"$



NOTE: Guide plates are graphical representations of selected room types, illustrating the integration of space, components, systems, and equipment. They provide typical configurations and general technical guidance, and are not intended to be project specific. Specific infrastructure design requirements are contained in VA Design Manuals and Space Planning Criteria located in the VA Technical Information Library.

## Exam Room (Multi-Purpose) (EXRG3)

## Design Standards

**ARCHITECTURAL**

Ceiling:	GWB Lay-in Panels
Ceiling Height:	9'-0" (2700 mm)
Wall Finish:	GWB-P
Wainscot:	--
Base:	RB
Floor Finish:	VCT
Slab Depression:	--
Sound Protection:	STC 40
Notes:	--

**SPECIAL EQUIPMENT****LIGHTING**

General:	--
Special:	--
Notes:	<ol style="list-style-type: none"> <li>2' x 4' (600 mm x 1200 mm) recessed fluorescent light fixture, acrylic prismatic lens, w/ F32T8 lamps, 3500°K, CRI=70 (minimum).</li> <li>Portable Examining Light</li> <li>The foot-candle level is average maintained.</li> <li>Provide ballasts per fixture for desired switching configuration. To provide a uniform lighting level, switch inner lamp(s) on first switch and outer lamps on second switch.</li> <li>Exact quantity, location, and lamping of light fixtures shall be chosen to meet the foot-candle requirement.</li> <li>Fluorescent nurse call light.</li> <li>Fixture description for alternate 150 NSF room is the same as described in Note 1 above. Orient both fixtures in the same manner as shown for 120 NSF room. Increase overall room wattage by 20%.</li> </ol>

**POWER**

General:	As Shown
Emergency:	As Shown
Notes:	<ol style="list-style-type: none"> <li>Coordinate location and height of work station receptacles with modular furniture.</li> <li>Exam table may be wall outlet connected.</li> </ol>

**COMMUNICATION/SPECIAL SYSTEMS**

Data:	Yes
Telephone:	Yes
Intercom:	--
Nurse Call:	Yes
Public Address:	--
Radio/Entertainment:	--
MATV:	--
CCTV:	--
MID:	--
Security/Duress:	Yes
VTEL:	--
VA Satellite TV:	--
Notes:	1) Coordinate location and height of work station telephone/data outlets with modular furniture.

**HEATING, VENTILATING AND AIR CONDITIONING**

Inside Design Conditions:	70°F (21°C) to 75°F (24°C) Dry-Bulb Temperature
	30 Percent to 50 Percent Relative Humidity
Minimum Air Changes per Hour:	6
100% Exhaust:	No
100% Outside Air:	No
Room Air Balance:	Neutral (0)
Dedicated Exhaust System:	No
Occupancy:	2
AC Load-(Equipment):	As Required
AC Load-(Light):	As Required
Notes:	1) Year around conditions.

**PLUMBING AND MEDICAL GASES**

Cold Water:	Yes
Hot Water:	Yes
Laboratory Air:	--
Laboratory Vacuum:	--
Sanitary Drain:	Yes
Reagent Grade Water:	--
Medical Air:	--
Medical Vacuum:	--
Oxygen:	--
Notes:	--



## Exam Room (Multi-Purpose) (EXRG3)

## Equipment List

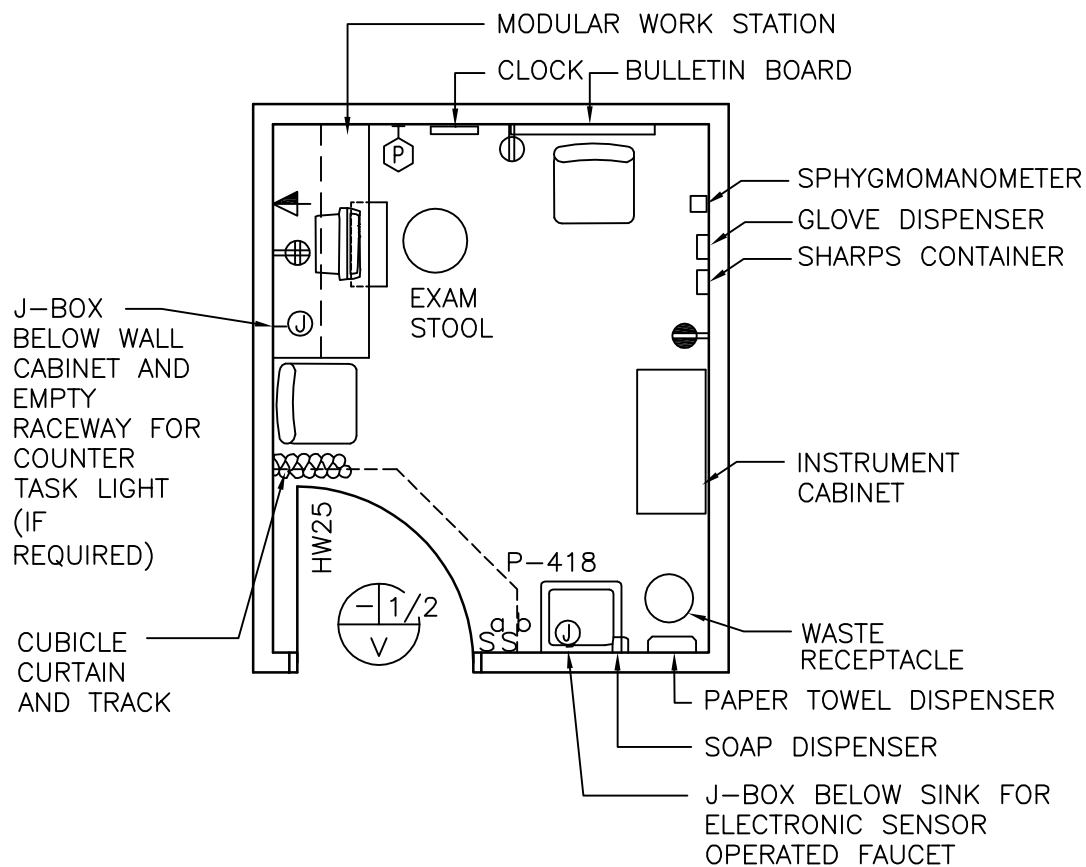
JSN	SYMBOL	QTY	AI	DESCRIPTION
P3100	P-418	1	CC	Lavatory, sensor control (PG-18-1, MCS 22 40 00; PG-18-4, NCS SD 22 40 00)
A5165	T45	1	CC	Shelf, corrosion resisting steel, 12" W x 5" D (300 mm W x 125 mm D) (PG-18-1, MCS 10 28 00; PG-18-4, NCS SD 10 28 00-4)
A5180		1	CC	Track, curtain, cubicle, ceiling type, surface mounted (PG-18-1, MCS 10 21 23)
A1010		1	CC	Outlet, telephone/data, wall mounted (PG-18-1, MCS 27 15 00)
		1	CC	Receptacle, electrical, quadruplex, for computer equipment items (PG-18-1, MCS 26 27 26)
		AR	CC	Receptacle, electrical, duplex (PG-18-1, MCS 26 27 26)
		1	CC	Receptacle, electrical, duplex, with ground fault interrupter (PG-18-1, MCS 26 27 26)
		1	CC	Nurse call, emergency station, with pull cord and corridor signal light (PG-18-1, MCS 27 52 23)
		1	CC	Alarm button, security/duress (PG-18-1, MCS 27 52 31)
A5075		1	VV	Dispenser, soap, liquid, wall mounted
A5080		1	VV	Dispenser, paper towel, surface mounted
F2017		1	VV	Receptacle, waste, step on type, approx. 12" (300 mm) diameter
A5145		2	VV	Hook, coat, wall mounted
A5180		1	VV	Curtain, cubicle
M9050		1	VV	Table, examining, padded, adjustable top, approx. 74" x 21" x 30" (1850 mm x 525 mm x 750 mm)
F0210		AR	VV	Chair, straight, without arms
E0210		1	VV	Modular work station with under counter keyboard tray, overhead storage, and wall hanger strips.
F0340		1	VV	Stool, examining
M3085		1	VV	Cabinet, instrument and treatment, 36" W x 16" D x 78" H (900 mm W x 400 mm D x 1950 mm H)
X3930		AR	VV	Illuminator, x-ray film, 120 volts, wall mounted, individual switch for two, 14" x 17" (350 mm x 425 mm) radiographs, 31" W x 20" H (775 mm W x 500 mm H)
M7401		1	VV	Light, examining, portable, 120 volt, approx. 18" diameter x 75" H (450 mm diameter x 1875 mm H)
M1801		1	VV	CRT, computer system, with keyboard
M4100		1	VV	Sphygmomanometer, wall hung
M4200		1	VV	Otoscope, wall hung
M4200		1	VV	Ophthalmoscope, wall hung
F3010 or F3025		1	VV	Bulletin board, 48" x 36" (1200 mm x 900 mm)
F2300		1	VV	Magazine/literature rack, wall mounted
F3200		1	VV	Clock, atomic, battery operated
A5106		1	VV	Sharps container, wall mounted
A5106		1	VV	Glove dispenser, wall mounted





# Ambulatory Care: ETM: Nurse Triage (EXRG4)

## Floor Plan



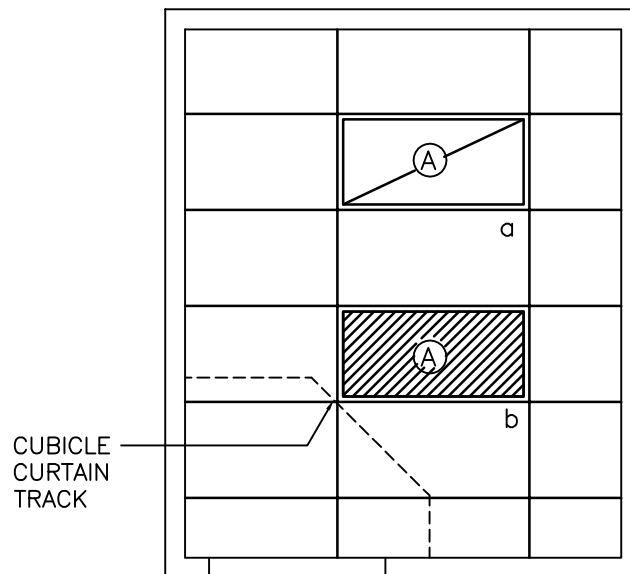
100 NSF/ 9.3 NSM

SCALE  $\frac{1}{4}" = 1'-0"$



NOTE: Guide plates are graphical representations of selected room types, illustrating the integration of space, components, systems, and equipment. They provide typical configurations and general technical guidance, and are not intended to be project specific. Specific infrastructure design requirements are contained in VA Design Manuals and Space Planning Criteria located in the VA Technical Information Library.

# Ambulatory Care: ETM Nurse Triage (EXRG4) Reflected Ceiling Plan



100 NSF/ 9.3 NSM

SCALE  $\frac{1}{4}" = 1'-0"$



NOTE: Guide plates are graphical representations of selected room types, illustrating the integration of space, components, systems, and equipment. They provide typical configurations and general technical guidance, and are not intended to be project specific. Specific infrastructure design requirements are contained in VA Design Manuals and Space Planning Criteria located in the VA Technical Information Library.

## Ambulatory Care: ETM Nurse Triage (EXRG4)

## Design Standards

**ARCHITECTURAL**

Ceiling:	AT
Ceiling Height:	9'-0" (2700 mm)
Wall Finish:	GWB-P
Wainscot:	--
Base:	RB
Floor Finish:	VCT
Slab Depression:	--
Sound Protection:	STC 40
Notes:	--

**SPECIAL EQUIPMENT****LIGHTING**

General:	--
Special:	--
Notes:	<ol style="list-style-type: none"> <li>2' x 4' (600 mm x 1200 mm) recessed fluorescent light fixture. Parabolic louver w/ F32T8 lamps, 3500°K, CRI=70 (minimum).</li> <li>The foot-candle level is average maintained.</li> <li>Provide ballasts per fixture for desired switching configuration. To provide a uniform lighting level, switch inner lamp(s) on first switch and outer lamps on second switch.</li> <li>Exact quantity, location, and lamping of light fixtures shall be chosen to meet the foot-candle requirement.</li> </ol>

**POWER**

General:	As Shown
Emergency:	As Shown
Notes:	<ol style="list-style-type: none"> <li>Coordinate location and height of work station receptacles with modular furniture.</li> </ol>

**COMMUNICATION/SPECIAL SYSTEMS**

Data:	Yes
Telephone:	Yes
Intercom:	--
Nurse Call:	--
Public Address:	--
Radio/Entertainment:	--
MATV:	--
CCTV:	--
MID:	--
Security/Duress:	Yes
VTEL:	--
VA Satellite TV:	--
Notes:	<ol style="list-style-type: none"> <li>Coordinate location and height of work station telephone/data outlets with modular furniture.</li> </ol>

**HEATING, VENTILATING AND AIR CONDITIONING**

Inside Design Conditions:	70°F (21°C) to 75°F (24°C) Dry-Bulb Temperature
	30 Percent to 50 Percent Relative Humidity
Minimum Air Changes per Hour:	12
100% Exhaust:	Yes
100% Outside Air:	Only if served by 100% OA (Outside Air) AHU
Room Air Balance:	Negative (-)
Dedicated Exhaust System:	No
Occupancy:	3
AC Load-(Equipment):	As Required
AC Load-(Light):	As Required
Notes:	<ol style="list-style-type: none"> <li>Year around conditions.</li> </ol>

**PLUMBING AND MEDICAL GASES**

Cold Water:	Yes
Hot Water:	Yes
Laboratory Air:	--
Laboratory Vacuum:	--
Sanitary Drain:	Yes
Reagent Grade Water:	--
Medical Air:	--
Medical Vacuum:	--
Oxygen:	--
Notes:	--



## Ambulatory Care: ETM Nurse Triage (EXRG4)

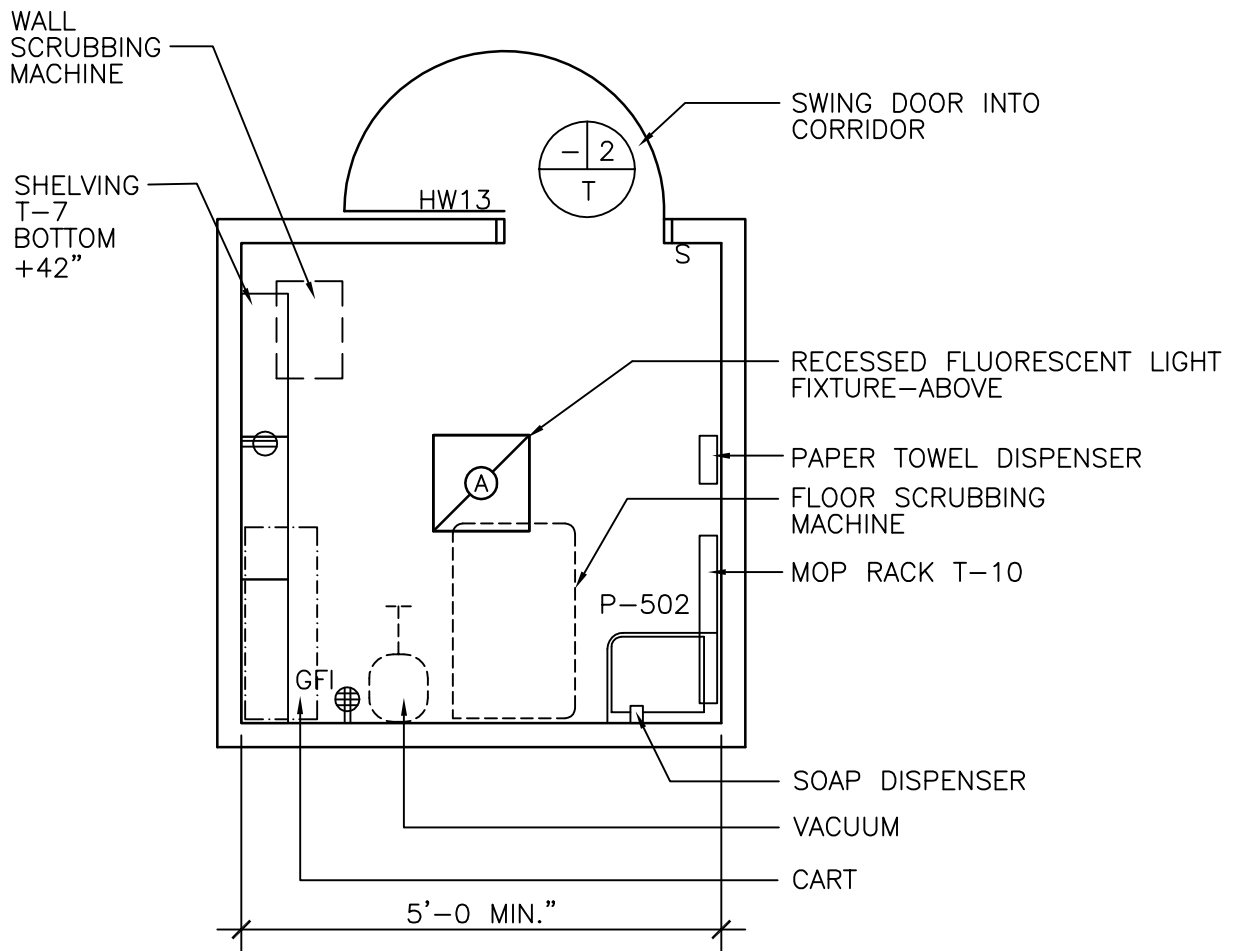
## Equipment List

JSN	SYMBOL	QTY	AI	DESCRIPTION
P3100	P-418	1	CC	Lavatory, sensor control (PG-18-1, MCS 22 40 00; PG-18-4, NCS SD 22 40 00)
A5180		1	CC	Track, curtain, cubicle, ceiling type, surface mounted (PG-18-1, MCS 10 21 23)
A1010		1	CC	Outlet, telephone/data, wall mounted (PG-18-1, MCS 27 15 00)
		1	CC	Receptacle, electrical, quadruplex, for computer equipment items (PG-18-1, MCS 26 27 26)
		AR	CC	Receptacle, electrical, duplex (PG-18-1, MCS 26 27 26)
		1	CC	Alarm button, security/duress (PG-18-1, MCS 27 52 31)
A5075		1	VV	Dispenser, soap, liquid, wall mounted
A5080		1	VV	Dispenser, paper towel, surface mounted
F2017		1	VV	Receptacle, waste, step on type, approx. 12" (300 mm) diameter
A5180		1	VV	Curtain, cubicle
F0210		AR	VV	Chair, straight, without arms
E0210		1	VV	Modular work station with under counter keyboard tray, overhead storage, and wall hanger strips.
F0340		1	VV	Stool, examining
M3085		1	VV	Cabinet, instrument and treatment, 36" W x 16" D x 78" H (900 mm W x 400 mm D x 1950 mm H)
M1801		1	VV	CRT, computer system, with keyboard
M4100		1	VV	Sphygmomanometer, wall hung
F3010 or F3025		1	VV	Bulletin board, 48" x 36" (1200 mm x 900 mm)
F3200		1	VV	Clock, atomic, battery operated
A5106		1	VV	Sharps container, wall mounted
A5106		1	VV	Glove dispenser, wall mounted



# Housekeeping Aids Closet (HAC) (JANC1)

## Floor Plan & Reflected Ceiling Plan



100 NSF (Large)/ 9.3 NSM (Large) (Shown above)  
 60 NSF (Surgery) 5.6 NSM  
 40 NSF(Standard)/ 3.8 NSM (Standard)

SCALE  $\frac{1}{4}" = 1'-0"$  M2 1 0 1 2 4Ft

NOTE: Guide plates are graphical representations of selected room types, illustrating the integration of space, components, systems, and equipment. They provide typical configurations and general technical guidance, and are not intended to be project specific. Specific infrastructure design requirements are contained in VA Design Manuals and Space Planning Criteria located in the VA Technical Information Library.

## Housekeeping Aids Closet (HAC) (JANC1)

## Design Standards

**ARCHITECTURAL**

Ceiling:	GWB-P
Ceiling Height:	9'-0" (2700 mm)
Wall Finish:	GWB-SC
Wainscot:	CT 48" (1200 mm) above base
Base:	WSF, 6" (150 mm)
	Integral Cove Base
Floor Finish:	WSF
Lead Lining:	--
Notes:	--

**SPECIAL EQUIPMENT****LIGHTING**

General:	--
Special:	--
Emergency:	All
Note:	<ol style="list-style-type: none"> <li>1) 2' x 2' (600 mm x 600 mm) recessed fluorescent light fixture, acrylic prismatic lens, w/ T8 lamps 3500°K, CRI=70 (minimum).</li> <li>2) The foot-candle level is average maintained.</li> <li>3) Provide ballasts per fixture for desired switching configuration. To provide a uniform lighting level, switch inner lamp(s) on first switch and outer lamps on second switch.</li> <li>4) Exact quantity, location, and lamping of light fixtures shall be chosen to meet the foot-candle requirement.</li> <li>5) Fixture description for alternate 60 NSF and 40 NSF rooms is the same as described in Note 1 above. Locate the fixture in the center of the room. Reduce fixture wattage to half that required for 100 NSF room.</li> </ol>

**POWER**

General:	As Shown
Emergency:	As Shown
Notes:	--

**COMMUNICATION/SPECIAL SYSTEMS**

Data:	--
Telephone:	--
Intercom:	--
Nurse Call:	--
Public Address:	--
Radio/Entertainment:	--
MATV:	--
CCTV:	--
MID:	--
Security/Duress:	--
VTEL:	--
VA Satellite TV:	--
Notes:	--

**HEATING, VENTILATING AND AIR CONDITIONING**

Inside Design Conditions:	Not Applicable
Minimum Air Changes per Hour:	Highest of: 10 air changes per hour, or 1 CFM/SF (23 liters/sec/sq meters), or 50 CFM (24 liters/sec). Air admitted as make-up from adjoining spaces
100% Exhaust:	Yes
100% Outside Air:	No
Room Air Balance:	Double Negative (--)
Dedicated Exhaust System:	No
Occupancy:	Not Applicable
AC Load-(Equipment):	Not Applicable
AC Load-(Light):	As Required
Notes:	--

**PLUMBING AND MEDICAL GASES**

Cold Water:	Yes
Hot Water:	Yes
Laboratory Air:	--
Laboratory Vacuum:	--
Sanitary Drain:	Yes
Reagent Grade Water:	--
Medical Air:	--
Medical Vacuum:	--
Oxygen:	--
Notes:	--



## Housekeeping Aids Closet (HAC) (JANC1)

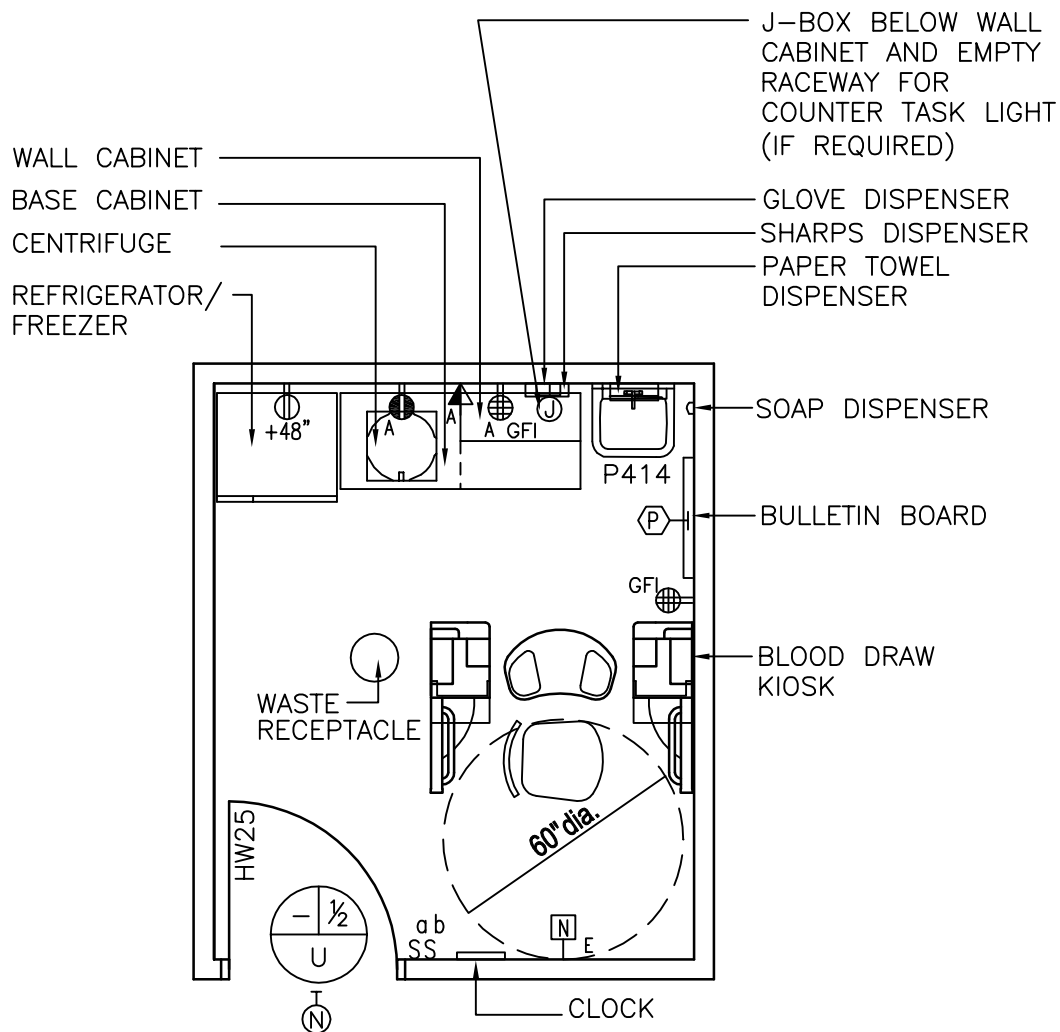
## Equipment List

JSN	SYMBOL	QTY	AI	DESCRIPTION
P4700	P-502	1	CC	Sink, service, corner, floor mounted (PG-18-1, MCS 22 40 00)
A5135	T-10	AR	CC	Rack, mop, wall mounted (PG-18-1, MCS 10 28 00)
A5135	T-7	AR	CC	Shelving, wall hung, corrosion resisting steel, 2 fixed shelves, 2 doors with locks, 36" x 12" x 48" (900 mm x 300 mm x 1200 mm), 60" (1520 mm) above finished floor (PG-18-1, MCS 12 31 00)
		AR	CC	Receptacle, electrical, duplex, 120 volt (PG-18-1, MCS 26 27 26)
		1	CC	Receptacle, electrical, quadruplex (PG-18-1, MCS 26 27 26)
M2600		1	VV	Vacuum cleaner, battery powered
		1	VV	Machine, scrubbing, wall, battery powered
M2650		1	VV	Machine, scrubbing, floor, battery powered
F0500		1	VV	Cart, supplies, 24" x 48" (600 mm x 1200 mm)
A5080		1	VV	Dispenser, paper towel, surface mounted
A5075		1	VV	Dispenser, soap, liquid, wall mounted



# Blood Draw (LBVP1)

## Floor Plan



120 NSF/ 11.2 NSM (SHOWN ABOVE)

ONCOLOGY LAB SIMILAR REDUCE TO 80 NSF/ 7.4 NSM

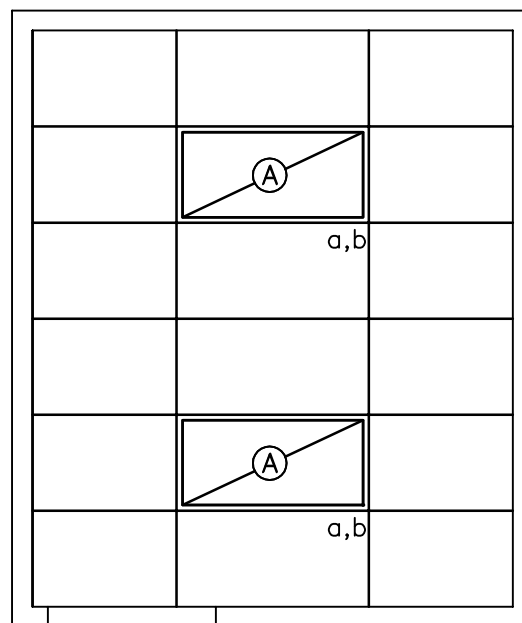
SCALE  $\frac{1}{4}" = 1'-0"$

M2 1 0 1 2 4Ft

NOTE: Guide plates are graphical representations of selected room types, illustrating the integration of space, components, systems, and equipment. They provide typical configurations and general technical guidance, and are not intended to be project specific. Specific infrastructure design requirements are contained in VA Design Manuals and Space Planning Criteria located in the VA Technical Information Library.



# Blood Draw (LBVP1) Reflected Ceiling Plan



120 NSF/ 11.2 NSM (SHOWN ABOVE)

ONCOLOGY LAB SIMILAR REDUCE TO 80 NSF/ 7.4 NSM

SCALE  $\frac{1}{4}" = 1'-0"$



NOTE: Guide plates are graphical representations of selected room types, illustrating the integration of space, components, systems, and equipment. They provide typical configurations and general technical guidance, and are not intended to be project specific. Specific infrastructure design requirements are contained in VA Design Manuals and Space Planning Criteria located in the VA Technical Information Library.

## Blood Draw (LBVP1)

## Design Standards

**ARCHITECTURAL**

Ceiling:	AT
Ceiling Height:	9'-0" (2700 mm)
Wall Finish:	GWB-P
Wainscot:	--
Base:	RB
Floor Finish:	VCT
Slab Depression:	--
Sound Protection:	STC 40
Notes:	--

**SPECIAL EQUIPMENT**

	--
--	----

**LIGHTING**

General:	--
Special:	--
Notes:	<ol style="list-style-type: none"> <li>1) 2' x 4' (600 mm x 1200 mm) recessed fluorescent light fixture, acrylic prismatic lens, w/ F32T8 lamps, 3500°K, CRI=70 (minimum).</li> <li>2) The foot-candle level is average maintained.</li> <li>3) Provide ballasts per fixture for desired switching configuration. To provide a uniform lighting level, switch inner lamp(s) on first switch and outer lamps on second switch.</li> <li>4) Exact quantity, location, and lamping of light fixtures shall be chosen to meet the foot-candle requirement.</li> <li>5) Fluorescent nurse call light.</li> <li>6) Fixture description for alternate 80 NSF room is the same as described in Note 1 above. Orient two fixtures at 90° to layout for 120 NSF room. Reduce fixture wattage to approximately 65% that required for 120 NSF room.</li> </ol>

**POWER**

General:	As Shown
Emergency:	As Shown
Notes:	--

**COMMUNICATION/SPECIAL SYSTEMS**

Data:	Yes
Telephone:	Yes
Intercom:	--
Nurse Call:	Yes
Public Address:	--
Radio/Entertainment:	--
MATV:	--
CCTV:	--
MID:	--
Security/Duress:	Yes
VTEL:	--
VA Satellite TV:	--
Notes:	--

**HEATING, VENTILATING AND AIR CONDITIONING**

Inside Design Conditions:	70°F (21°C) to 75°F (24°C) Dry-Bulb Temperature 30 Percent to 50 Percent Relative Humidity
Minimum Air Changes per Hour:	6
100% Exhaust:	No
100% Outside Air:	No
Room Air Balance:	Neutral (0)
Dedicated Exhaust System:	No
Occupancy:	2
AC Load-(Equipment):	As Required
AC Load-(Light):	As Required
Notes:	1) Year around conditions.

**PLUMBING AND MEDICAL GASES**

Cold Water:	Yes
Hot Water:	Yes
Laboratory Air:	--
Laboratory Vacuum:	--
Sanitary Drain:	Yes
Reagent Grade Water:	--
Medical Air:	--
Medical Vacuum:	--
Oxygen:	--
Notes:	--



# Blood Draw (LBVP1)

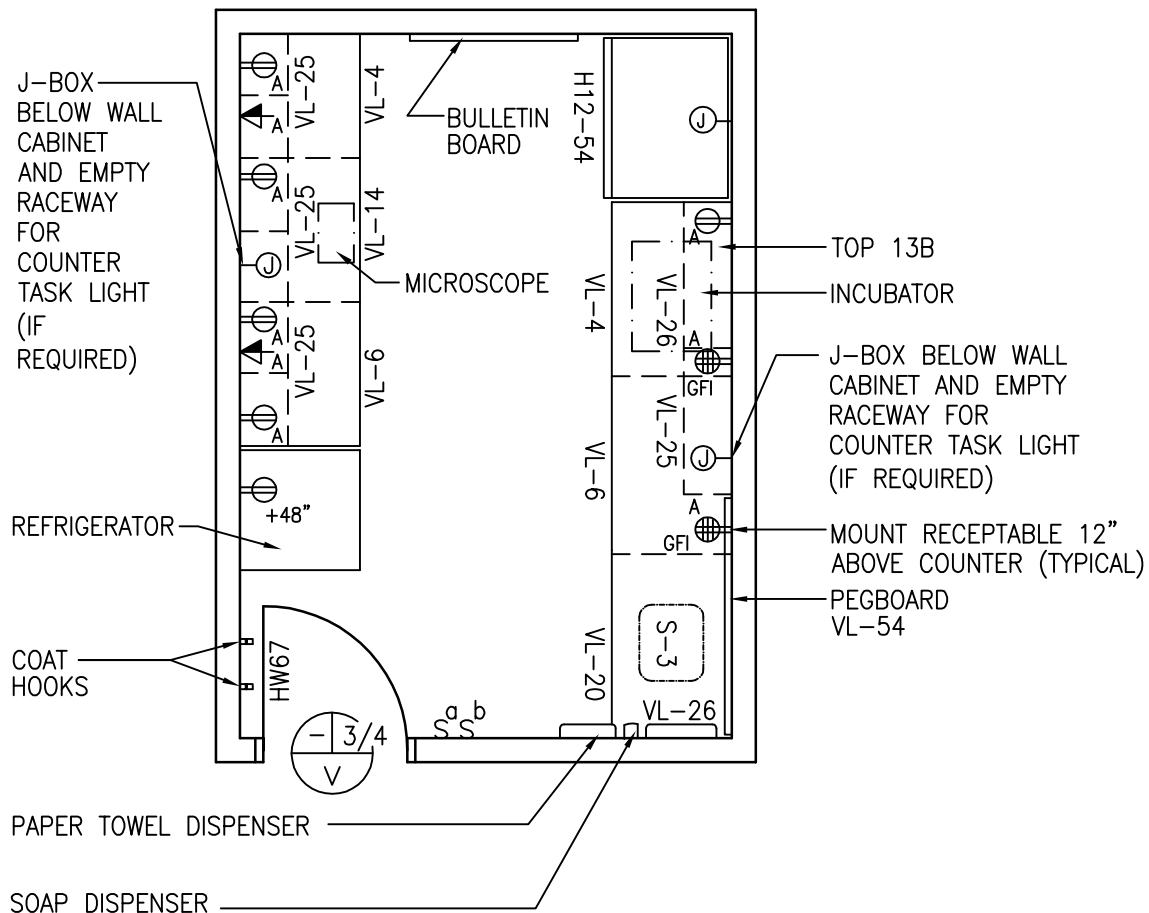
## Equipment List

JSN	SYMBOL	QTY	AI	DESCRIPTION
CT030	Top 10A	1	CC	Counter top, high pressure plastic laminate, decorative, over plywood or particle board core, 1-1/4" (25 mm) thick (PG-18-1, MCS 12 36 00)
C03F0	VL4	1	CC	Cabinet, under counter, with 2 drawers, 2 hinged doors and 1 adjustable shelf, 30" x 22" x 31" (750 mm x 550 mm x 775 mm) for floor mounted add, 5" (125 mm) toe base (PG-18-1, MCS 12 31 00, 12 32 00)
	VL5	1	CC	Cabinet, under counter, with 4 drawers, 1 hinged door and 2 adjustable shelves, 30" x 22" x 31" (750 mm x 550 mm x 775 mm) for floor mounted add, 5" (125 mm) toe base (PG-18-1; MCS 12 31 00, 12 32 00)
CE040	VL25	1	CC	Cabinet, wall, with sloping top, 2 glazed sliding doors and 2 adjustable shelves, 30" x 13" x 30" (750 mm x 325 mm x 750 mm) (PG-18-1, MCS 12 31 00, 12 32 00)
P3100	P-414	1	CC	Lavatory, straight back (PG-18-1, MCS 22 40 00)
A1010		1	CC	Outlet, telephone/data, wall mounted (PG-18-1, MCS 27 15 00)
		AR	CC	Receptacle, electrical, quadruplex, ground fault interrupter (PG-18-1, MCS 26 27 26)
		AR	CC	Receptacle, electrical, duplex (PG-18-1, MCS 26 27 26)
		1	CC	Nurse call, emergency station with corridor signal light (PG-18-1, MCS 27 52 23)
		1	CC	Alarm button, security/duress (PG-18-1, MCS 27 52 31)
A5075		1	VV	Dispenser, soap, liquid, wall mounted
A5080		1	VV	Dispenser, paper towel, surface mounted
F2017		1	VV	Receptacle, waste, step on type, approx. 12" (300 mm) diameter
M1410		1	VV	Kiosk, blood draw or chair, laboratory, blood drawing with storage
F3010 or F3025		1	VV	Bulletin board, 30" x 42" (750 mm x 1050 mm) Note: F3010 is 48" x 48" (1200 mm x 1200 mm) and F3025 is wood frame.
R7250		1	VV	Refrigerator/freezer, 120 volt, domestic, approx. 31" x 28" x 66" (775 mm x 700 mm x 1650 mm)
L1350		1	VV	Centrifuge, non-refrigerated, bench model, 120 volt, approx. 19" H x 16" W x 19" D (480 mm H x 400 mm W x 480 mm D)
F3200		1	VV	Clock, atomic, battery operated
A5106		1	VV	Sharps container/glove dispenser



# Laboratory: Microbiology (LMM03)

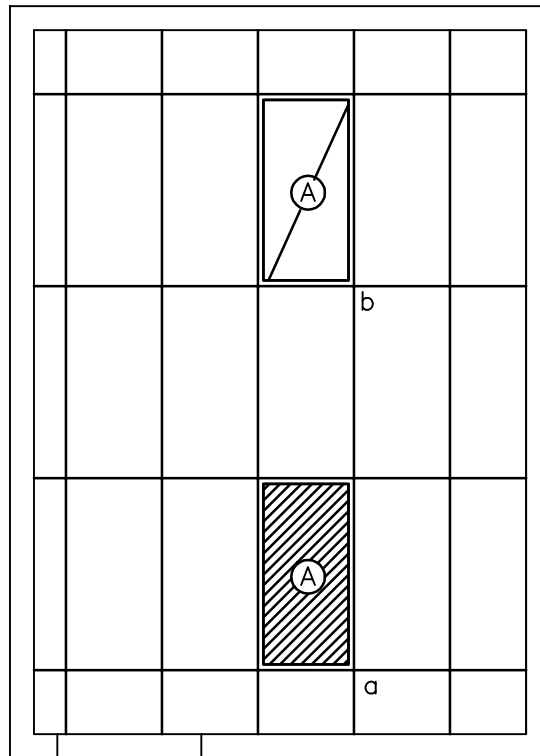
## Floor Plan



NOTE: Guide plates are graphical representations of selected room types, illustrating the integration of space, components, systems, and equipment. They provide typical configurations and general technical guidance, and are not intended to be project specific. Specific infrastructure design requirements are contained in VA Design Manuals and Space Planning Criteria located in the VA Technical Information Library.

Laboratory: Microbiology (LMM03)

Reflected Ceiling Plan



150 NSF/ 13.9 NSM

SCALE  $\frac{1}{4}" = 1'-0"$



NOTE: Guide plates are graphical representations of selected room types, illustrating the integration of space, components, systems, and equipment. They provide typical configurations and general technical guidance, and are not intended to be project specific. Specific infrastructure design requirements are contained in VA Design Manuals and Space Planning Criteria located in the VA Technical Information Library.

# Laboratory: Microbiology (LMM03)

## Design Standards

### ARCHITECTURAL

Ceiling:	GWB, lay-in panels in grid
Ceiling Height:	9'-0" (2700 mm)
Wall Finish:	GWB-P
Wainscot:	--
Base:	RB
Floor Finish:	VCT
Slab Depression:	--
Notes:	--

### SPECIAL EQUIPMENT

	--
--	----

### LIGHTING

General:	--
Special:	--
Notes:	<ol style="list-style-type: none"> <li>2' x 4' (600 mm x 1200 mm) recessed fluorescent light fixture, acrylic prismatic lens, w/ three F32T8 lamps, 3500°K, CRI=70.</li> <li>The foot-candle level is average maintained.</li> <li>Provide ballasts per fixture for desired switching configuration. To provide a uniform lighting level, switch inner lamp(s) on first switch and outer lamps on second switch.</li> <li>Exact quantity, location, and lamping of light fixtures shall be chosen to meet the foot-candle requirement.</li> </ol>

### POWER

General:	As Shown
Emergency:	As Shown
Notes:	--

### COMMUNICATION/SPECIAL SYSTEMS

Data:	Yes
Telephone:	Yes
Intercom:	--
Nurse Call:	--
Public Address:	--
Radio/Entertainment:	--
MATV:	--
CCTV:	--
MID:	--
Security/Duress:	--
VTEL:	--
VA Satellite TV:	--
Notes:	--

### HEATING, VENTILATING AND AIR CONDITIONING

Inside Design Conditions:	70°F (21°C) to 75°F (24°C) Dry-Bulb Temperature
	30 Percent to 50 Percent Relative Humidity
Minimum Air Changes per Hour:	6
100% Exhaust:	Yes
100% Outside Air:	No
Room Air Balance:	Negative (-)
Dedicated Exhaust System:	No
Occupancy:	3
AC Load-(Equipment):	As Required
AC Load-(Light):	As Required
Notes:	--

### PLUMBING AND MEDICAL GASES

Cold Water:	Yes
Hot Water:	Yes
Laboratory Air:	Yes
Laboratory Vacuum:	Yes
Sanitary Drain:	Yes
Reagent Grade Water:	Yes
Medical Air:	--
Medical Vacuum:	--
Oxygen:	--
Notes:	<ol style="list-style-type: none"> <li>Chemical Resistant Drain, Fuel Gas, Biological cabinet</li> </ol>



## Laboratory: Microbiology (LMM03)

## Equipment List

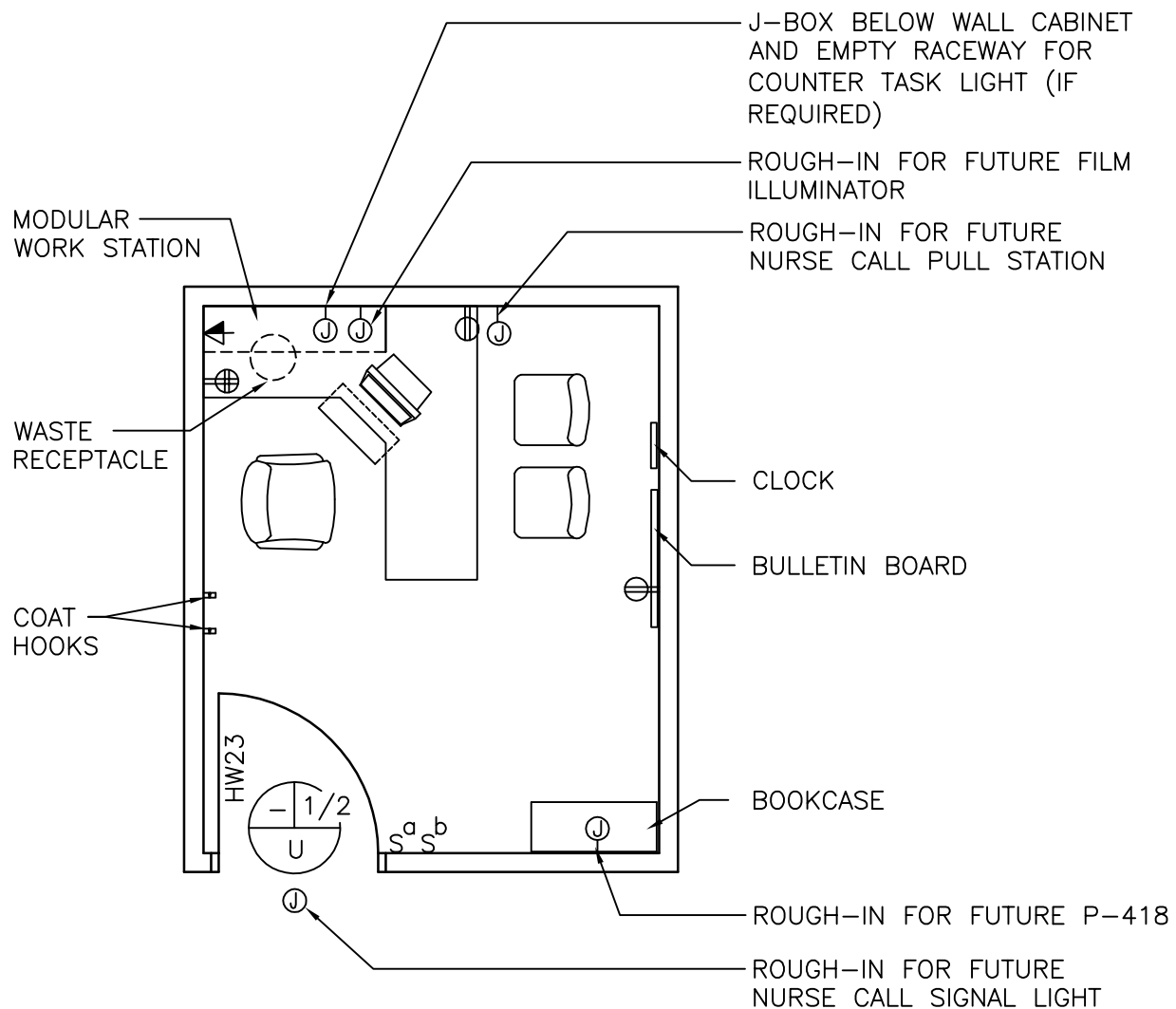
JSN	SYMBOL	QTY	AI	DESCRIPTION
				Note: VL (fixed) casework is shown; however, modular casework may also be selected (PG-18-1, MCS 12 32 00, 12 34 00).
E0574	VL4	AR	CC	Cabinet, under counter, with 2 dust seal drawers, 2 hinged doors and 1 adjustable shelf, 36" W (900 mm W), 224" D (5600 mm D), 31" H (775 mm H), add 5" (125 mm) for base (PG-18-1, PG-18-6, MCS 12 31 00)
E0574	VL6	AR	CC	Cabinet, under counter, with 1 drawer, 1 door and 1 adjacent shelf 36" (900 mm); 30" D (750 mm D), 25" H (635 mm H) add 5" (125 mm) for base (PG-18-1, PG-18-6, MCS 12 31 00)
E0574	VL14	AR	CC	Table frame with drawers, knee space unit, width are, 30" D (750 mm D), 25" H (635 mm H) (PG-18-1, PG-18-6, MCS 12 31 00)
E0574	VL20	AR	CC	Cabinet, under counter, sink unit, 2 hinged panel doors 36" W (900 mm W); 30" D (750 mm D); 25" H (635 mm H), add 5" (125 mm) for base (PG-18-1, PG-18-6, MCS 12 31 00)
E0574	VL25	AR	CC	Cabinet, wall, with sloping top, 2 glazed sliding doors and 2 adjustable shelves, 36" W (900 mm W), 13" D (325 mm D), 30" H (750 mm H) (PG-18-1, PG-18-6, MCS 12 31 00)
C0051	VL54	1	CC	Pegboard, epoxy, 53 pegs, 32" x 30" (800 mm x 750 mm) (PG-18-1, PG-18-6, MCS 12 36 00)
A5165	VL26	1	CC	Shelf, corrosion resistant metal, 12" W x 6" D (300 mm W x 150 mm D), wall hung (PG-18-1, PG-18-6, MCS 12 36 00)
CT060	13B	AR	CC	Counter top, epoxy resin, with drip groove, 1" (25 mm) THICK x 30" (750 mm) deep along both walls (PG-18-1, PG-18-6, MCS 12 36 00)
L2336	H12-54	1	CC	Cabinet, air flow, biological, with lab air, fuel gas and lab vacuum outlets, 120 volt, receptacle (PG-18-1, PG-18-6, MCS 11 53 53)
CS270	S-3	1	CC	Sink, molded resin with end or corner drain, 18" W x 14" L x 16" D (450 mm W x 350 mm L x 400 mm D) (PG-18-1, PG-18-6, MCS 12 36 00)
		AR	CC	Receptacle, electrical, duplex, 120 volt (PG-18-1, MCS 26 27 26)
		AR	CC	Receptacle, electrical, quadruplex, with ground fault interrupter (PG-18-1, MCS 26 27 26)
A1010		AR	CC	Outlet, telephone/data (PG-18-1, MCS 27 15 00)
F3010 or F3025		1	VV	Bulletin board, 30" x 42" (750 mm x 1050 mm)
R7250		1	VV	Refrigerator/freezer, 120 volt, domestic, approx. 31" W x 28" D 66" H (775 mm W x 700 mm D x 1650 mm H)
A5080		1	VV	Dispenser, paper towel, surface mounted
A5075		1	VV	Dispenser, soap, liquid, wall mounted
A5145		2	VV	Hook, coat, wall mounted
L0100		1	VV	Microscope
L4215		1	VV	Incubator, bench top



Office (OFA01)(OFA02)(OFA03)(SEC01)(OFC01)(OFC02)(OFD01)(OFD03)(OFDC1)(OFDR1)

## Floor Plan

CONSIDER PROVIDING BACKING ROUGH-INS FOR CONVERSION TO EXAM ROOM-SEE GUIDE PLATE 4-174 SIMILAR.



Typical: 120 NSF/ 11.2 NSM (Shown above)  
 Minimum: 80 NSF/ 7.4 NSM  
 Maximum: 150 NSF/ 13.9 NSM

SCALE  $\frac{1}{4}" = 1'-0"$

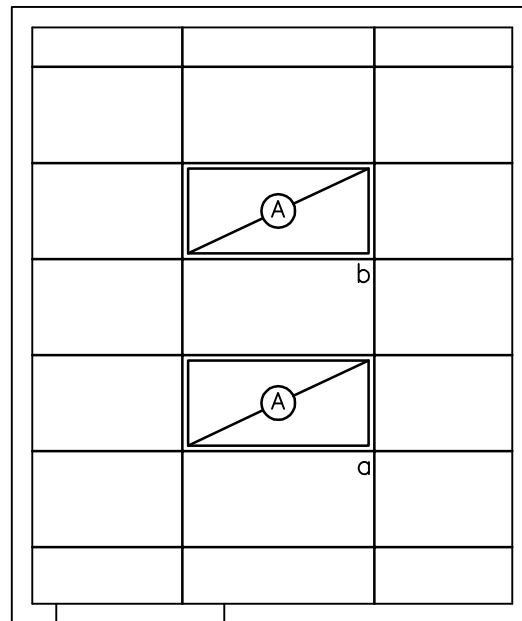


NOTE: Guide plates are graphical representations of selected room types, illustrating the integration of space, components, systems, and equipment. They provide typical configurations and general technical guidance, and are not intended to be project specific. Specific infrastructure design requirements are contained in VA Design Manuals and Space Planning Criteria located in the VA Technical Information Library.



Office (OFA01)(OFA02)(OFA03)(SEC01)(OFC01)(OFC02)(OFD01)(OFD03)(OFDC1)(OFDR1)

# Reflected Ceiling Plan



Typical: 120 NSF/ 11.2 NSM (Shown above)  
 Minimum: 80 NSF/ 7.4 NSM  
 Maximum: 150 NSF/ 13.9 NSM

SCALE  $\frac{1}{4}" = 1'-0"$



NOTE: Guide plates are graphical representations of selected room types, illustrating the integration of space, components, systems, and equipment. They provide typical configurations and general technical guidance, and are not intended to be project specific. Specific infrastructure design requirements are contained in VA Design Manuals and Space Planning Criteria located in the VA Technical Information Library.

Office (OFA01)(OFA02)(OFA03)(SEC01)(OFC01)(OFC02)(OFD01)(OFD03)(OFDC1)(OFDR1)

## Design Standards

### ARCHITECTURAL

Ceiling:	AT
Ceiling Height:	9'-0" (2700 mm)
Wall Finish:	GWB-P
Wainscot:	--
Base:	RB
Floor Finish:	CPT
Slab Depression:	--
Sound Protection:	STC 40
Notes:	--

### SPECIAL EQUIPMENT

### LIGHTING

General:	--
Special:	--
Notes:	<ol style="list-style-type: none"> <li>2' x 4' (600 mm x 1200 mm) recessed fluorescent light fixture, parabolic louver, w/ F32T8 lamps 3500°K, CRI=70 (minimum).</li> <li>The foot-candle level is average maintained.</li> <li>Provide ballasts per fixture for desired switching configuration. To provide a uniform lighting level, switch inner lamp(s) on first switch and outer lamps on second switch.</li> <li>Exact quantity, location, and lamping of light fixtures shall be chosen to meet the foot-candle requirement.</li> <li>Fixture description for alternate 80 and 150 NSF rooms is the same as described in Note 1 above. Orient the two fixtures for 150 NSF room in the same manner as shown for 120 NSF room. Orient single fixture and grid for 80 NSF room at 90° from orientation shown in 150 NSF room. For 80 and 150 NSF rooms, increase fixture wattage by 50%.</li> </ol>

### POWER

General:	As Shown
Emergency:	As Shown
Notes:	<ol style="list-style-type: none"> <li>Coordinate location and height of work station receptacles with modular furniture.</li> </ol>

### COMMUNICATION/SPECIAL SYSTEMS

Data:	Yes
Telephone:	Yes
Intercom:	--
Nurse Call:	Rough-in Only
Public Address:	--
Radio/Entertainment:	--
MATV:	--
CCTV:	--
MID:	--
Security/Duress:	--
VTEL:	--
VA Satellite TV:	--
Notes:	<ol style="list-style-type: none"> <li>Coordinate location and height of work station telephone/data outlets with modular furniture.</li> </ol>

### HEATING, VENTILATING AND AIR CONDITIONING

Inside Design Conditions:	70°F (21°C) to 75°F (24°C) Dry-Bulb Temperature
	30 Percent to 50 Percent Relative Humidity
Minimum Air Changes per Hour:	4
100% Exhaust:	No
100% Outside Air:	No
Room Air Balance:	Neutral (0)
Dedicated Exhaust System:	No
Occupancy:	2
AC Load-(Equipment):	As Required
AC Load-(Light):	As Required
Notes:	--

### PLUMBING AND MEDICAL GASES

Cold Water:	Rough-in Only
Hot Water:	Rough-in Only
Laboratory Air:	--
Laboratory Vacuum:	--
Sanitary Drain:	Rough-in Only
Reagent Grade Water:	--
Medical Air:	--
Medical Vacuum:	--
Oxygen:	--
Notes:	--



Office (OFAO1)(OFAO2)(OFAO3)(SEC01)(OFC01)(OFC02)(OFD01)(OFD03)(OFDC1)(OFDR1)

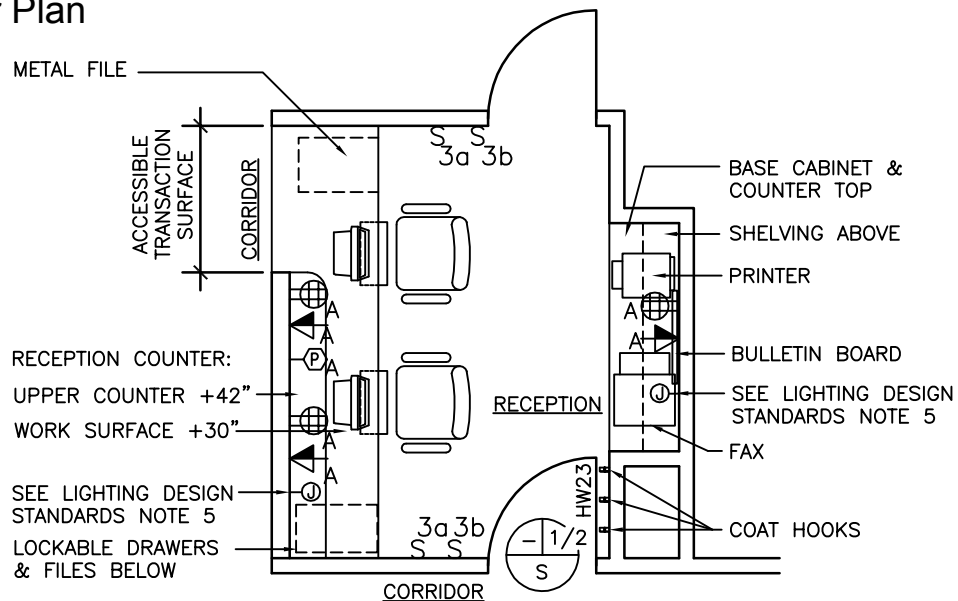
**Equipment List**

JSN	SYMBOL	QTY	AI	DESCRIPTION
	P-418	1	CC	Rough-in for lavatory, sensor control (PG-18-1, MCS 22 40 00; PG-18-4, NCS SD 22 40 00)
A1010		1	CC	Outlet, telephone/data, wall mounted (PG-18-1, MCS 27 15 00)
		1	CC	Receptacle, electrical, quadruplex, for computer equipment items (PG-18-1, MCS 26 27 26)
		AR	CC	Receptacle, electrical, duplex (PG-18-1, MCS 26 27 26)
		1	CC	Rough-in for nurse call, emergency station, and corridor signal light (PG-18-1, MCS 27 52 23)
E0210		1	VV	Modular work station with under counter keyboard tray, overhead storage, and wall hanger strips.
F0205		1	VV	Chair, rotary, with arms
F0120		1	VV	Bookcase, sectional, each section, 33" x 13" x 75" (825 mm x 325 mm x 1875 mm) with 10" (250 mm) base
A5145		2	VV	Hook, coat, wall mounted
F2000		1	VV	Receptacle, waste, 13" (325 mm) diameter
M1801		1	VV	PC, computer system, with keyboard
F0210		2	VV	Chair, straight, without arms
F3010		1	VV	Bulletin board, 48" x 36" (1200 mm x 900 mm)
F3200		1	VV	Clock, atomic, battery operated
Refer to Examination Room Guide Plate (EXRG3) for location of following:				
		AR	CC	Provide backing for future wall mounted equipment and accessories: Sphygmomanometer Otoscope / Ophthalmoscope Glove dispenser Sharps container Paper towel dispenser
		1	CC	Rough-in j-box for future x-ray film illuminator



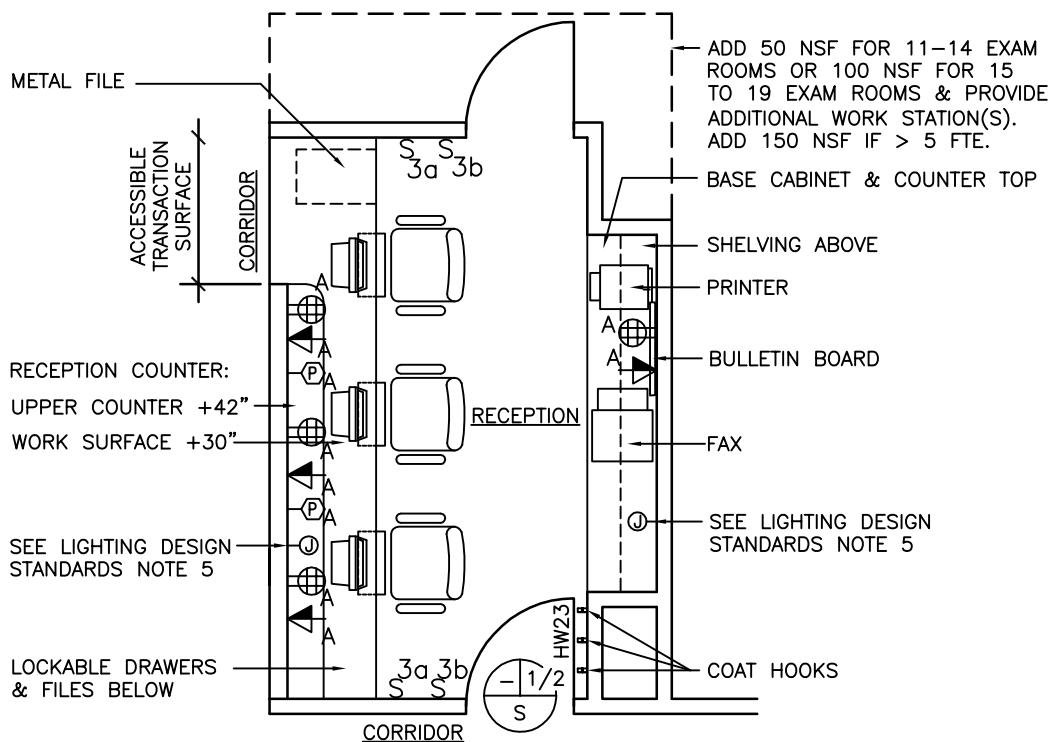
# Reception (RECP1)

## Floor Plan



Typical Reception: 120 NSF/ 11.2 NSM

Prosthetics similar: 60 NSF/ 5.6 NSM



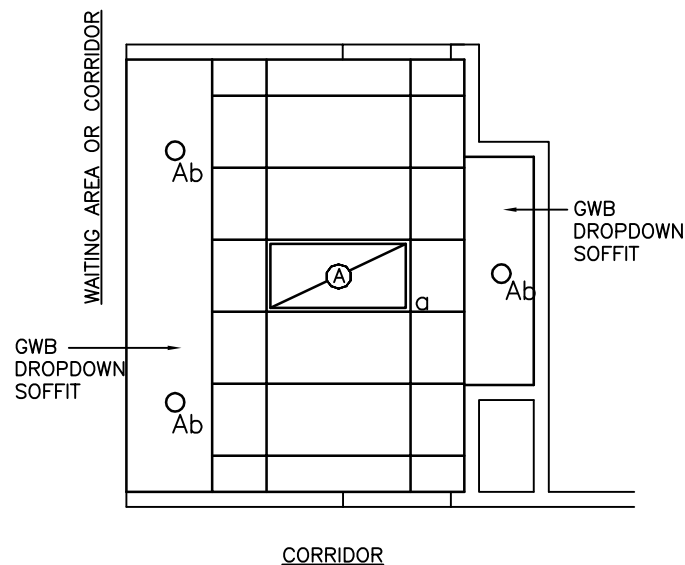
Clinical Reception (for up to 10 Exam Rooms): 150 NSF/13.9 NSM

SCALE  $\frac{3}{16}" = 1'-0"$

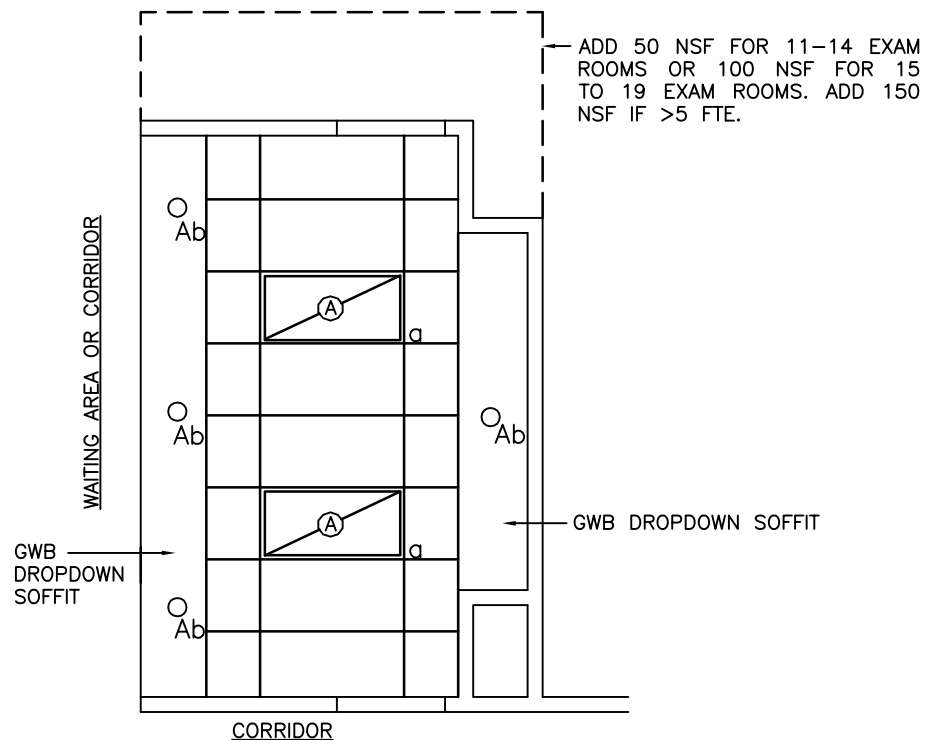


NOTE: Guide plates are graphical representations of selected room types, illustrating the integration of space, components, systems, and equipment. They provide typical configurations and general technical guidance, and are not intended to be project specific. Specific infrastructure design requirements are contained in VA Design Manuals and Space Planning Criteria located in the VA Technical Information Library.

# Reception (RECP1) Reflected Ceiling Plan



Typical Reception: 120 NSF/ 11.2 NSM  
Prosthetics similar: 60 NSF/ 5.6 NSM



Clinical Reception (for up to 10 Exam Rooms): 150 NSF/13.9 NSM

SCALE  $\frac{3}{16}$ " = 1'-0"



NOTE: Guide plates are graphical representations of selected room types, illustrating the integration of space, components, systems, and equipment. They provide typical configurations and general technical guidance, and are not intended to be project specific. Specific infrastructure design requirements are contained in VA Design Manuals and Space Planning Criteria located in the VA Technical Information Library.

## Reception (RECP1)

## Design Standards

**ARCHITECTURAL**

Ceiling:	AT
Ceiling Height:	9'-0" (2700 mm)
Wall Finish:	--
Wainscot:	--
Base:	RB
Floor Finish:	VCT
Slab Depression:	--
Notes:	--

**SPECIAL EQUIPMENT**

	--
--	----

**LIGHTING**

General:	--
Special:	--
Emergency:	--

- Notes:
- 1) Recessed fluorescent fixture with compact fluorescent lamp.
  - 2) Recessed 2' x 4' (600 mm x 1200 mm) fluorescent fixture with F32T8 lamps, color temperature of 3500°K, CRI=70 (minimum).
  - 3) The foot-candle level is average maintained.
  - 4) Provide ballasts per fixture for desired switching configuration. To provide a uniform lighting level, switch inner lamps(s) on first switch and outer lamps on second switch.
  - 4) Exact quantity, location, and lamping of light fixtures shall be chosen to meet the foot-candle requirement.
  - 5) J-box below wall cabinet and empty raceway for counter task light (if required).

**POWER**

General:	As Shown
Special:	As Shown
Emergency:	As Shown
Notes:	--

**COMMUNICATION/SPECIAL SYSTEMS**

Data:	Yes
Telephone:	Yes
Intercom:	--
Nurse Call:	--
Public Address:	--
Radio/Entertainment:	--
MATV:	--
CCTV:	--
MID:	--
Security/Duress:	Yes
VTEL:	--
VA Satellite TV:	--
Notes:	--

**HEATING, VENTILATING AND AIR CONDITIONING**

Inside Design Conditions:	70°F (21°C) to 75°F (24°C) Dry-Bulb Temperature 30 Percent to 50 Percent Relative Humidity
Minimum Air Changes per Hour:	6
100% Exhaust:	No
100% Outside Air:	No
Room Air Balance:	Neutral (0)
Dedicated Exhaust System:	No
Occupancy:	2
AC Load-(Equipment):	As Required
AC Load-(Light):	As Required
Notes:	--

**PLUMBING AND MEDICAL GASES**

Cold Water:	--
Hot Water:	--
Laboratory Air:	--
Laboratory Vacuum:	--
Sanitary Drain:	--
Reagent Grade Water:	--
Medical Air:	--
Medical Vacuum:	--
Oxygen:	--
Notes:	--



## Reception (RECP1)

## Equipment List

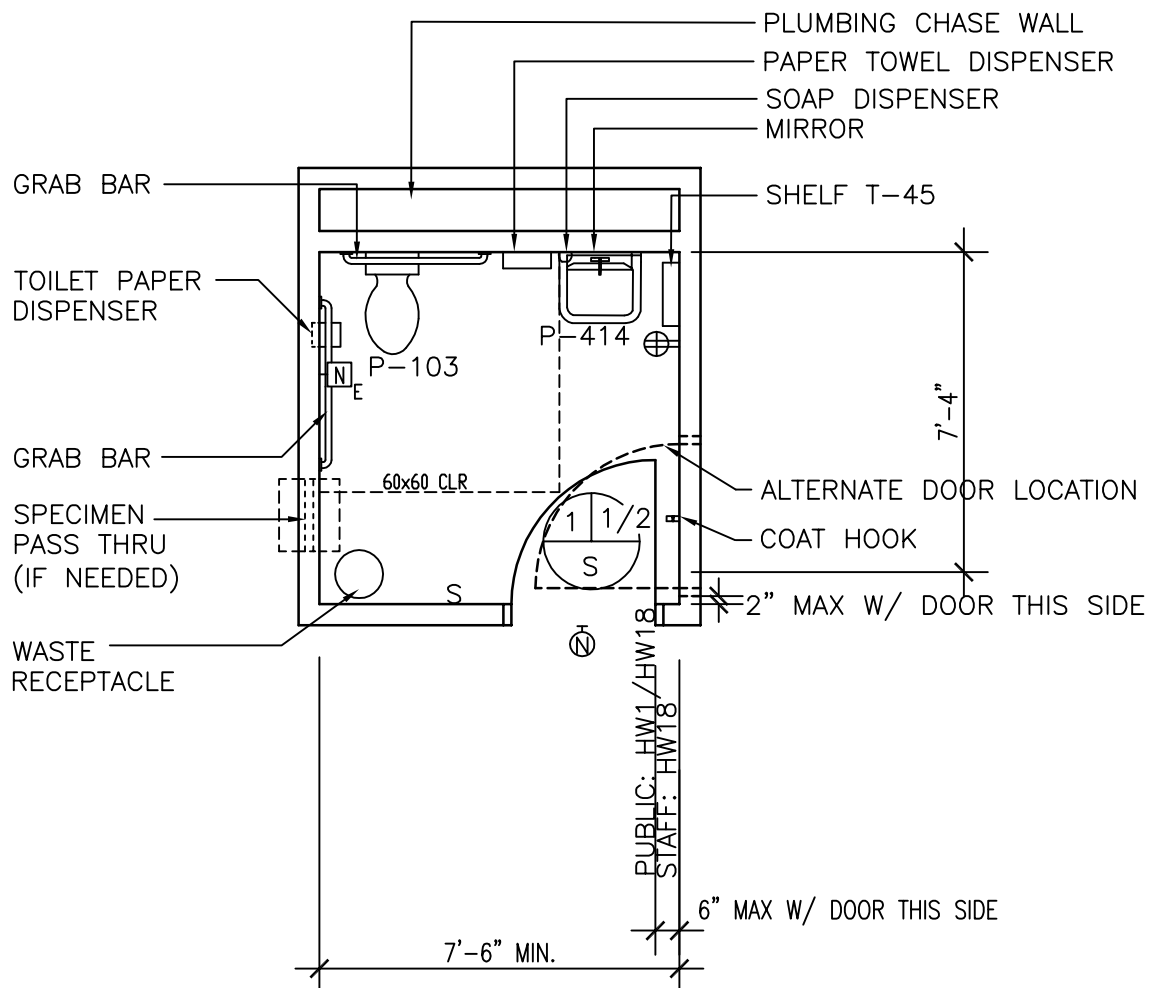
JSN	SYMBOL	QTY	AI	DESCRIPTION
		AR	CC	Receptacle, electrical, quadruplex, for computer equipment items (PG-18-1, MCS 26 27 26)
		AR	CC	Shelving, wall hung, standard and bracket type, 2 adjustable shelves, 12" D x length as required (300 mm D x length as required (PG-18-1, MCS 12 36 00)
A1010		AR	CC	Outlet, telephone/data (PG-18-1, MCS 27 15 00)
F3010 or F3025		AR	CC	Bulletin board
CT030		AR	CC	Reception counter, custom casework (PG-18-1, MCS 06 20 00)
A6105		AR	CC	Base cabinets, counter top, and open wall shelving (work surface) (PG-18-1, MCS 12 32 00 and 12 36 00)
		AR	CC	Alarm button, security/duress (PG-18-1, MCS 27 52 31)
M1801		AR	VV	CRT, computer system, with keyboard
F0410		AR	VV	Metal file, under counter
M1840		1	VV	Printer, computer system
F0280		AR	VV	Chair, rotary, with arms
M1840		1	VV	Machine, facsimile
A5145		3	VV	Hook, coat, wall mounted



## Toilet, Wheelchair Accessible (TLTU1)

## Floor Plan

NOTE: DO NOT OVERLAP DOOR SWING WITH ADA/ ABA CLEARANCE AT WATER CLOSET.



55 NSF/ 3.7 NSM

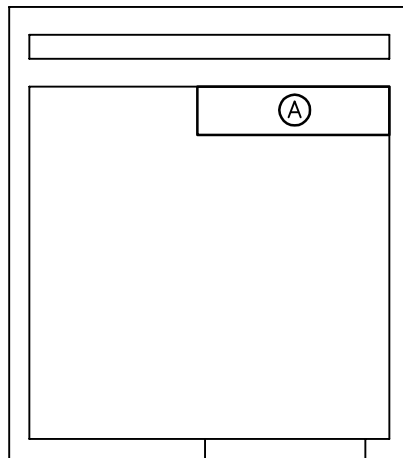
SCALE  $\frac{1}{4}" = 1'-0"$



NOTE: Guide plates are graphical representations of selected room types, illustrating the integration of space, components, systems, and equipment. They provide typical configurations and general technical guidance, and are not intended to be project specific. Specific infrastructure design requirements are contained in VA Design Manuals and Space Planning Criteria located in the VA Technical Information Library.



# Toilet, Wheelchair Accessible (TLTU1) Reflected Ceiling Plan



55 NSF/ 3.7 NSM

SCALE  $\frac{1}{4}" = 1'-0"$



NOTE: Guide plates are graphical representations of selected room types, illustrating the integration of space, components, systems, and equipment. They provide typical configurations and general technical guidance, and are not intended to be project specific. Specific infrastructure design requirements are contained in VA Design Manuals and Space Planning Criteria located in the VA Technical Information Library.

## Toilet, Wheelchair Accessible (TLTU1)

## Design Standards

**ARCHITECTURAL**

Ceiling:	AT
Ceiling Height:	9'-0" (2700 mm)
Wall Finish:	GWB-P
Wainscot:	48" (1200 mm) min., CT
Base:	CT
Floor Finish:	CT
Slab Depression:	--
Sound Protection:	STC 40
Notes:	--

**SPECIAL EQUIPMENT****LIGHTING**

General:	--
Special:	--
Notes:	<ol style="list-style-type: none"> <li>1) Wall mounted fluorescent fixture above mirror. Fixture shall have T8 lamps, 3500°K, CRI=70 (minimum).</li> <li>2) The foot-candle level is average maintained.</li> <li>3) Provide ballasts per fixture for desired switching configuration. To provide a uniform lighting level, switch inner lamp(s) on first switch and outer lamps on second switch.</li> <li>4) Exact quantity, location, and lamping of light fixtures shall be chosen to meet the foot-candle requirement.</li> <li>5) Fluorescent nurse call light.</li> </ol>

**POWER**

General:	As Shown
Emergency:	As Shown
Notes:	--

**COMMUNICATION/SPECIAL SYSTEMS**

Data:	--
Telephone:	--
Intercom:	--
Nurse Call:	Yes
Public Address:	--
Radio/Entertainment:	--
MATV:	--
CCTV:	--
MID:	--
Security/Duress:	--
VTEL:	--
VA Satellite TV:	--
Notes:	--

**HEATING, VENTILATING AND AIR CONDITIONING**

Inside Design Conditions:	
	(Interior) Conditioned by make-up air
	(Perimeter) Heating 68°F (20°C)
	Provide radiant ceiling panels
Minimum Air Changes per Hour:	Highest of:
	10 air changes per hour, or
	50 CFM (24 liters/sec).
	Room air balance
100% Exhaust:	Yes
100% Outside Air:	No
Room Air Balance:	Double Negative (--)
Dedicated Exhaust System:	No
Occupancy:	Transient
AC Load-(Equipment):	None
AC Load-(Light):	As Required
Notes:	1) Individual Room Temperature
Control:	
	(Interior) Not Required
	(Perimeter) Required for Heating
	Mode

**PLUMBING AND MEDICAL GASES**

Cold Water:	Yes
Hot Water:	Yes
Laboratory Air:	--
Laboratory Vacuum:	--
Sanitary Drain:	Yes
Reagent Grade Water:	--
Medical Air:	--
Medical Vacuum:	--
Oxygen:	--
Notes:	--

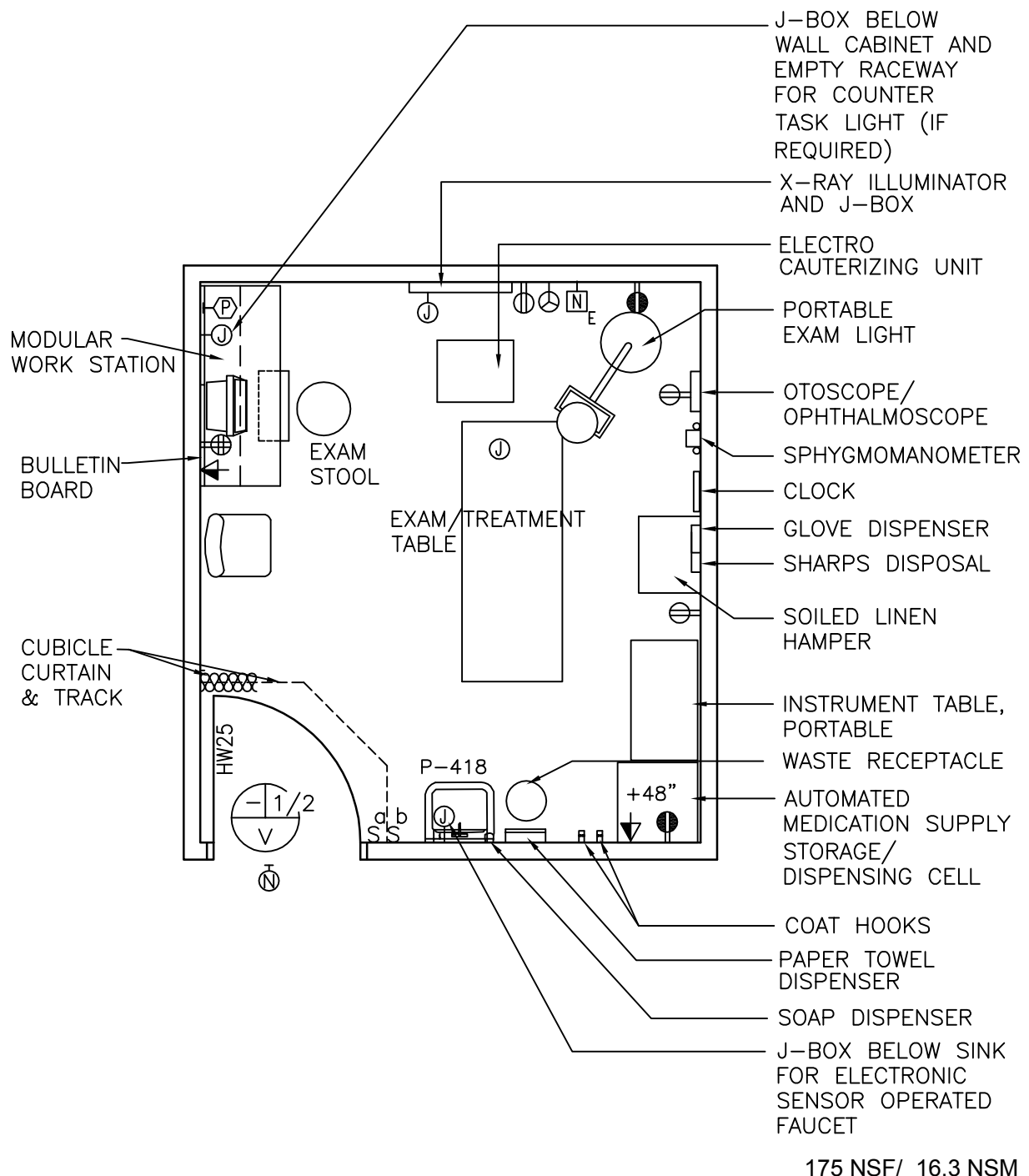


**Toilet, Wheelchair Accessible (TLTU1)**
**Equipment List**

<b>JSN</b>	<b>SYMBOL</b>	<b>QTY</b>	<b>AI</b>	<b>DESCRIPTION</b>
P9150	P-103	1	CC	Water closet, wall hung (PG-18-1, MCS 22 40 00)
A5200		1	CC	Dispenser, toilet tissue, double roll (PG-18-1, MCS 10 28 00; PG-18-4, NCS SD 10 21 13-1)
A5109		AR	CC	Bar, grab for water closet (PG-18-1, MCS 10 28 00; PG-18-4, NCS SD 10 21 13-1)
P3100	P-414	1	CC	Lavatory, straight back (PG-18-1, MCS 22 40 00)
A1066		1	CC	Mirror, 24" x 36" (600 mm x 900 mm) over wheelchair lavatory (PG-18-1, MCS 10 28 00; PG-18-4, NCS SD 10 28 00-3)
A5162	T-45	1	CC	Shelf, stainless steel, wall hung, 6" x 18" (150 mm x 450 mm) (PG-18-1, MCS 10 28 00)
		1	CC	Light, over mirror (PG-18-1, MCS 26 51 00)
		AR	CC	Receptacle, electrical, duplex, with ground fault interrupter (PG-18-1, MCS 26 27 26)
		1	CC	Nurse call, emergency station, with corridor signal light, provide pull cord by water closet (PG-18-1, MCS 27 52 23). Omit in staff toilet.
A5145		1	VV	Hook, coat, wall mounted
A5075		1	VV	Dispenser, soap, liquid, wall mounted
A5080		1	VV	Dispenser, paper towel, surface mounted
F2017		1	VV	Receptacle, waste, step on type, approx. 12" (300 mm) diameter
				Note: Provide following only when clinic has a laboratory.
		1	CC	Specimen pass-thru, to general lab (PG-18-1, MCS 10 28 00)



# Ambulatory Care: Dermatology Procedure/Treatment Room (TRGS1) Floor Plan

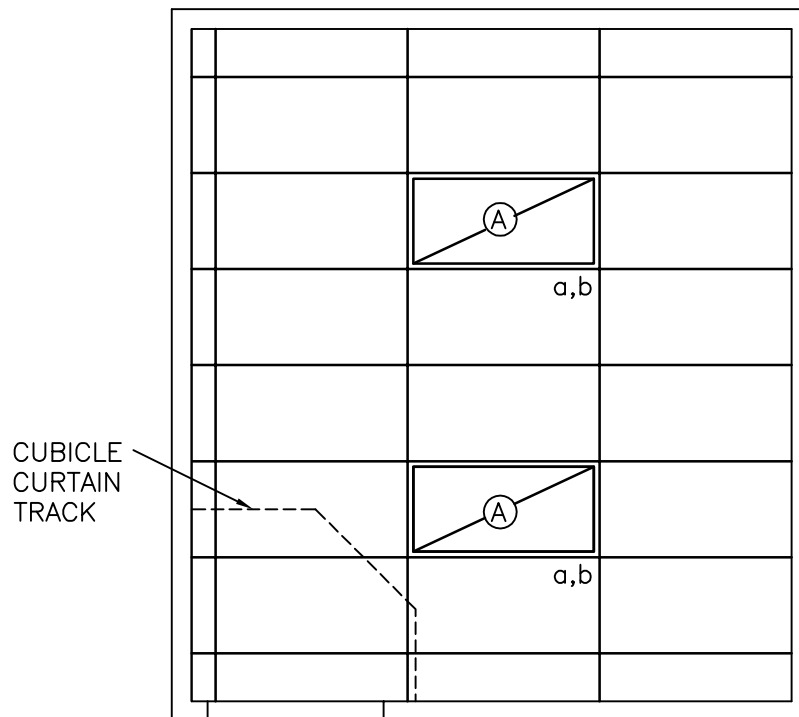


SCALE  $\frac{1}{4}" = 1'-0"$



NOTE: Guide plates are graphical representations of selected room types, illustrating the integration of space, components, systems, and equipment. They provide typical configurations and general technical guidance, and are not intended to be project specific. Specific infrastructure design requirements are contained in VA Design Manuals and Space Planning Criteria located in the VA Technical Information Library.

# Ambulatory Care: Dermatology Procedure/Treatment Room (TRGS1) Reflected Ceiling Plan



175 NSF/ 16.3 NSM

SCALE  $\frac{1}{4}" = 1'-0"$



NOTE: Guide plates are graphical representations of selected room types, illustrating the integration of space, components, systems, and equipment. They provide typical configurations and general technical guidance, and are not intended to be project specific. Specific infrastructure design requirements are contained in VA Design Manuals and Space Planning Criteria located in the VA Technical Information Library.

# Ambulatory Care: Dermatology Procedure/Treatment Room (TRGS1)

## Design Standards

### ARCHITECTURAL

Ceiling:	AT
Ceiling Height:	9'-0" (2700 mm)
Wall Finish:	GWB-P
Wainscot:	--
Base:	RB
Floor Finish:	VCT
Slab Depression:	--
Sound Protection:	STC 40
Notes:	--

### SPECIAL EQUIPMENT

	--
--	----

### LIGHTING

General:	--
Special:	Yes
Notes:	<ol style="list-style-type: none"> <li>2' x 4' (600 mm x 1200 mm) recessed fluorescent light fixture with acrylic prismatic lens w/ F32T8 lamps. Fluorescent lamp Kelvin temperature shall be 3500°K, CRI=70 (minimum).</li> <li>The foot-candle level is average maintained.</li> <li>Provide ballasts per fixture for desired switching configuration. To provide a uniform lighting level, switch inner lamp(s) on first switch and outer lamps on second switch.</li> <li>Exact quantity, location, and lamping of light fixtures shall be chosen to meet the foot-candle requirement.</li> <li>Fluorescent nurse call light.</li> </ol>

### POWER

General:	As Shown
Emergency:	As Shown
Notes:	<ol style="list-style-type: none"> <li>Junction box x-ray illuminator. Connect per equipment manufacturer.</li> <li>Floor mounted junction box for powered exam and treatment table. Connect per equipment manufacturer.</li> <li>Coordinate location and height of work station receptacles with modular furniture.</li> <li>Exam table may be wall outlet connected.</li> </ol>

### COMMUNICATION/SPECIAL SYSTEMS

Data:	Yes
Telephone:	Yes
Intercom:	--
Nurse Call:	Yes
Public Address:	--
Radio/Entertainment:	--
MATV:	--
CCTV:	--
MID:	--
Security/Duress:	Yes
VTEL:	--
VA Satellite TV:	--
Notes:	<ol style="list-style-type: none"> <li>Coordinate location and height of work station telephone/data outlets with modular furniture.</li> </ol>

### HEATING, VENTILATING AND AIR CONDITIONING

Inside Design Conditions:	70°F (21°C) to 75°F (24°C) Dry-Bulb Temperature
	30 Percent to 50 Percent Relative Humidity
Minimum Air Changes per Hour:	6
100% Exhaust:	No
100% Outside Air:	No
Room Air Balance:	Negative (-)
Dedicated Exhaust System:	No
Occupancy:	3
AC Load-(Equipment):	As Required
AC Load-(Light):	As Required
Notes:	<ol style="list-style-type: none"> <li>Year around conditions.</li> </ol>

### PLUMBING AND MEDICAL GASES

Cold Water:	Yes
Hot Water:	Yes
Laboratory Air:	--
Laboratory Vacuum:	--
Sanitary Drain:	Yes
Reagent Grade Water:	--
Medical Air:	--
Medical Vacuum:	--
Oxygen:	--
Notes:	--



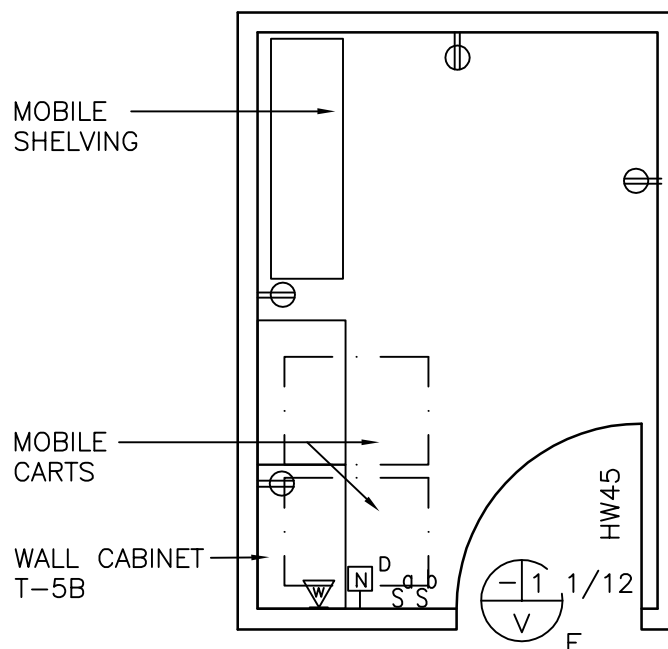
## Ambulatory Care: Dermatology Procedure/Treatment Room (TRGS1)

## Equipment List

JSN	SYMBOL	QTY	AI	DESCRIPTION
P3100	P-418	1	CC	Lavatory, sensor control (PG-18-1, MCS 22 40 00; PG-18-4, NCS SD 22 40 00)
A5180		1	CC	Track, curtain, cubicle, ceiling type, surface mounted (PG-18-1, MCS 10 21 23)
		1	CC	Junction box, floor, 120V power for examining table (PG-18-1, MCS 26 27 26)
A1010		2	CC	Outlet, telephone/data, wall mounted (PG-18-1, MCS 27 15 00)
		1	CC	Receptacle, electrical, quadruplex, for computer equipment items (PG-18-1, MCS 26 27 26)
		AR	CC	Receptacle, electrical, duplex (PG-18-1, MCS 26 27 26)
		1	CC	Nurse call, emergency station, with pull cord and corridor signal light (PG-18-1, MCS 27 52 23)
		1	CC	Alarm button, security/duress (PG-18-1, MCS 27 52 31)
M7420		1	VV	Light, examining, portable, 120 volt, approx. 18" diameter x 75" H (450 mm diameter x 1875 mm H)
E0210		AR	VV	Modular work station with under counter keyboard tray, overhead storage, and wall hanger strips.
F3200		1	VV	Clock, atomic, battery operated
A5080		1	VV	Dispenser, paper towel, surface mounted
A5075		1	VV	Dispenser, soap, liquid, wall mounted
M3185		1	VV	Electro-surgical unit, mobile, approx. 21" W x 24" D (525 mm W x 600 mm D)
A5145		2	VV	Hook, coat, wall mounted
X3930		1	VV	Illuminator, x-ray film, 120 volts, wall mounted, individual switch for two, 14" x 17" (350 mm x 425 mm) radiographs, 31" W x 20" H (775 mm W x 500 mm H)
F2017		1	VV	Receptacle, waste, step on type, approx. 12" (300 mm) diameter
M1801		1	VV	PC, computer system, with keyboard
F0210		1	VV	Chair, straight, without arms
M9066		1	VV	Table, examining and treatment, motorized
M8830		1	VV	Table, instrument, dressing, corrosion resisting steel, 20" W x 36" L x 35" H (500 mm W x 900 mm L x 875 mm H)
A5180		1	VV	Curtain, cubicle
M4100		1	VV	Sphygmomanometer, wall hung
M4200		1	VV	Otoscope, wall hung
M4200		1	VV	Ophthalmoscope, wall hung
F0340		1	VV	Stool, examining, adjustable
F3010 or F3025		1	VV	Bulletin board, 30" x 42" (750 mm x 1050 mm) Note: F3010 is 48" x 48" (1200 mm x 1200 mm) and F3025 is wood frame.
A5106		1	VV	Sharps container
A5106		1	VV	Glove dispenser
M3070		1	VV	Hamper, soiled linen
M3150		AR	VV	Automated storage/dispensing unit (cell), secure; approx. 27" W x 25" D x 78" H (675 mm W x 635 mm D x 1950 mm H)



# Clean Utility Room (UCCL1) Floor Plan



Minimum: 100 NSF/ 9.4 NSM

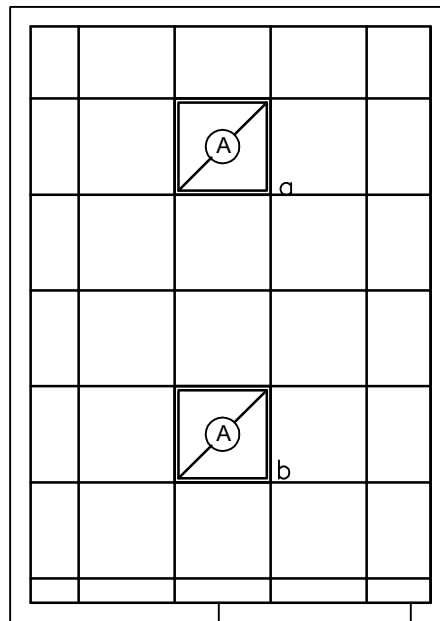
SCALE  $\frac{1}{4}" = 1'-0"$



NOTE: Guide plates are graphical representations of selected room types, illustrating the integration of space, components, systems, and equipment. They provide typical configurations and general technical guidance, and are not intended to be project specific. Specific infrastructure design requirements are contained in VA Design Manuals and Space Planning Criteria located in the VA Technical Information Library.



# Clean Utility Room (UCCL1) Reflected Ceiling Plan



Minimum: 100 NSF/ 9.4 NSM

SCALE  $\frac{1}{4}" = 1'-0"$



NOTE: Guide plates are graphical representations of selected room types, illustrating the integration of space, components, systems, and equipment. They provide typical configurations and general technical guidance, and are not intended to be project specific. Specific infrastructure design requirements are contained in VA Design Manuals and Space Planning Criteria located in the VA Technical Information Library.

## Clean Utility Room (UCCL1)

## Design Standards

**ARCHITECTURAL**

Ceiling:	AT (SP)
Ceiling Height:	9'-0" (2700 mm)
Wall Finish:	GWB (SC)
Wainscot:	--
Base:	RB
Floor Finish:	VCT
Slab Depression:	--
Sound Protection:	--
Notes:	--

**SPECIAL EQUIPMENT****LIGHTING**

General:	--
Special:	--
Notes:	<ol style="list-style-type: none"> <li>1) Recessed 2' x 2' (600 mm x 600 mm) fluorescent light fixture with acrylic prismatic lens, T8 lamps, 3500°K, CRI=70 (minimum).</li> <li>2) The foot-candle level is average maintained.</li> <li>3) Provide ballasts per fixture for desired switching configuration. To provide a uniform lighting level, switch inner lamp(s) on first switch and outer lamps on second switch.</li> <li>4) Exact quantity, location, and lamping of light fixtures shall be chosen to meet the foot-candle requirement.</li> </ol>

**POWER**

General:	As Shown
Emergency:	As Shown
Notes:	--

**COMMUNICATION/SPECIAL SYSTEMS**

Data:	--
Telephone:	Yes
Intercom:	--
Nurse Call:	Yes
Public Address:	--
Radio/Entertainment:	--
MATV:	--
CCTV:	--
MID:	--
Security/Duress:	--
VTEL:	--
VA Satellite TV:	--
Notes:	--

**HEATING, VENTILATING AND AIR CONDITIONING**

Inside Design Conditions:	70°F (21°C) to 75°F (24°C) Dry-Bulb Temperature 30 Percent to 50 Percent Relative Humidity
Minimum Air Changes per Hour:	4
100% Exhaust:	No
100% Outside Air:	No
Room Air Balance:	Positive (+)
Dedicated Exhaust System:	Not Required
Occupancy:	Not Applicable
AC Load-(Equipment):	As Required
AC Load-(Light):	As Required
Notes:	--

**PLUMBING AND MEDICAL GASES**

Cold Water:	Yes
Hot Water:	Yes
Laboratory Air:	--
Laboratory Vacuum:	--
Sanitary Drain:	Yes
Reagent Grade Water:	--
Medical Air:	--
Medical Vacuum:	--
Oxygen:	--
Notes:	--



## Clean Utility Room (UCCL1)

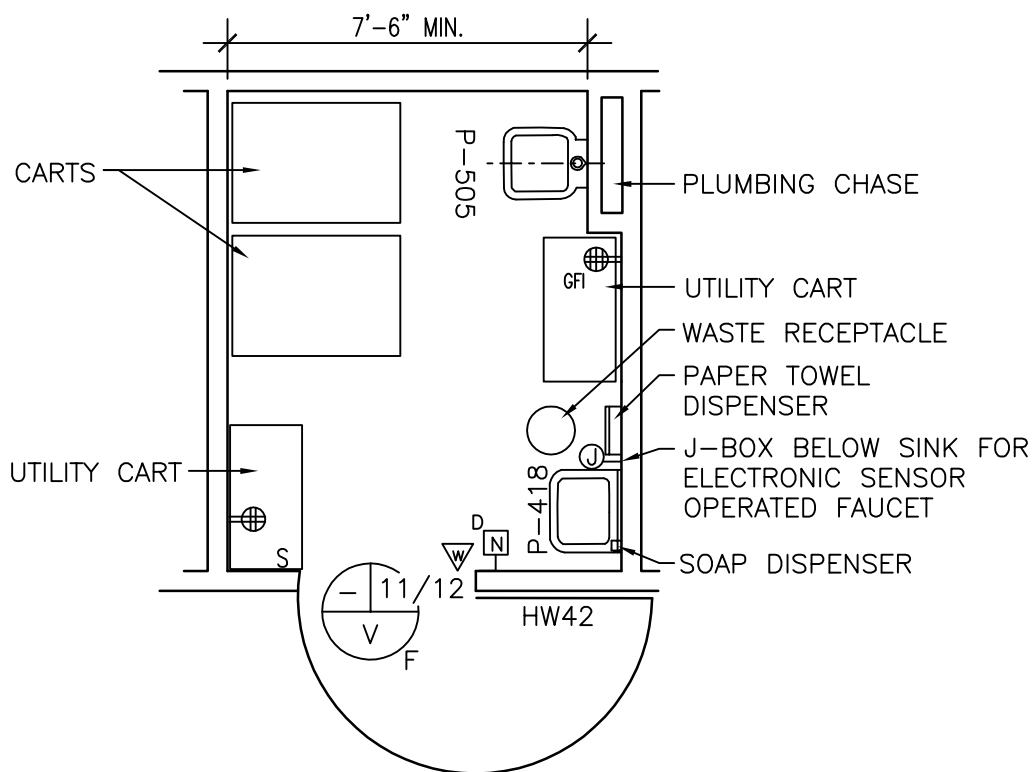
## Equipment List

JSN	SYMBOL	QTY	AI	DESCRIPTION
CD040	T-5B	AR	CC	Cabinet, wall, with sloping top, 2 hinged doors and 2 adjustable shelves, 36" x 22" x 42" (900 mm x 550 mm x 1050 mm) (PG-18-1, MCS 12 31 00)
		AR	CC	Receptacle, electrical, duplex, 120 volt (PG-18-1, MCS 26 27 26)
A1010		AR	CC	Outlet, telephone, wall mounted (PG-18-1, MCS 27 15 00)
		1	CC	Nurse call duty station (PG-18-1, MCS 27 52 23)
M2050		AR	VV	Shelving, storage, mobile, steel, rod shelf, open style with 5 adjustable shelves
E0945		AR	VV	Cart, mobile with adjustable shelves, 27" x 36" x 38" (675 mm x 900 mm x 950 mm)



# Soiled Utility Room (USCL1)

## Floor Plan



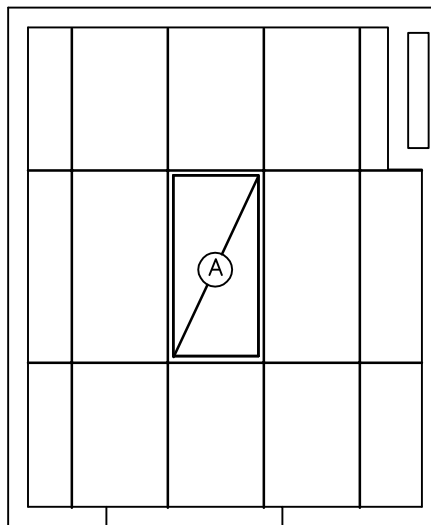
Typical (min.): 80 NSF/ 7.4 NSM (Shown above)  
Ambulatory Surgery: 100 NSF/ 9.3 NSM

SCALE  $\frac{1}{4}" = 1'-0"$



NOTE: Guide plates are graphical representations of selected room types, illustrating the integration of space, components, systems, and equipment. They provide typical configurations and general technical guidance, and are not intended to be project specific. Specific infrastructure design requirements are contained in VA Design Manuals and Space Planning Criteria located in the VA Technical Information Library.

# Soiled Utility Room (USCL1) Reflected Ceiling Plan



Typical (min.): 80 NSF/ 7.4 NSM (Shown above)  
Ambulatory Surgery: 100 NSF/ 9.3 NSM

SCALE  $\frac{1}{4}" = 1'-0"$



NOTE: Guide plates are graphical representations of selected room types, illustrating the integration of space, components, systems, and equipment. They provide typical configurations and general technical guidance, and are not intended to be project specific. Specific infrastructure design requirements are contained in VA Design Manuals and Space Planning Criteria located in the VA Technical Information Library.

## Soiled Utility Room (USCL1)

## Design Standards

**ARCHITECTURAL**

Ceiling:	AT (SP)
Ceiling Height:	9'-0" (2700 mm)
Wall Finish:	GWB (SC)
Wainscot:	--
Base:	RSF
Floor Finish:	RSF
Slab Depression:	--
Sound Protection:	--
Notes:	--

**SPECIAL EQUIPMENT****LIGHTING**

General:	--
Special:	--
Notes:	<ol style="list-style-type: none"> <li>1) Recessed 2' x 4' (600 mm x 1200 mm) fluorescent fixture with acrylic prismatic lens, w/ F32T8 lamps, 3500°K, CRI=70 (minimum).</li> <li>2) The foot-candle level is average maintained.</li> <li>3) Provide ballasts per fixture for desired switching configuration. To provide a uniform lighting level, switch inner lamp(s) on first switch and outer lamps on second switch.</li> <li>4) Exact quantity, location, and lamping of light fixtures shall be chosen to meet the foot-candle requirement.</li> <li>5) Fixture description for alternate 100 NSF room is the same as described in Note 1 above. Orient single fixture for 100 NSF in the same manner as shown for 80 NSF room. Fixture wattage should be the same for both room sizes.</li> </ol>

**POWER**

General:	As Shown
Emergency:	As Shown
Notes:	--

**COMMUNICATION/SPECIAL SYSTEMS**

Data:	--
Telephone:	Yes
Intercom:	--
Nurse Call:	Yes
Public Address:	--
Radio/Entertainment:	--
MATV:	--
CCTV:	--
MID:	--
Security/Duress:	--
VTEL:	--
VA Satellite TV:	--
Notes:	--

**HEATING, VENTILATING AND AIR CONDITIONING**

Inside Design Conditions:	Not Required
Minimum Air Changes per Hour:	10 (All Make-Up Air)
100% Exhaust:	Yes
100% Outside Air:	No
Room Air Balance:	Double Negative (--)
Dedicated Exhaust System:	No
Occupancy:	None
AC Load-(Equipment):	None
AC Load-(Light):	As Required
Notes:	<ol style="list-style-type: none"> <li>1) Admit make-up air through the door undercut and transfer grille (if required) from the adjoining areas.</li> </ol>

**PLUMBING AND MEDICAL GASES**

Cold Water:	Yes
Hot Water:	Yes
Laboratory Air:	--
Laboratory Vacuum:	--
Sanitary Drain:	Yes
Reagent Grade Water:	--
Medical Air:	--
Medical Vacuum:	--
Oxygen:	--
Notes:	--



## Soiled Utility Room (USCL1)

## Equipment List

JSN	SYMBOL	QTY	AI	DESCRIPTION
P3100	P-418	1	CC	Lavatory, sensor control (PG-18-1, MCS 22 40 00)
P6500	P-505	1	CC	Sink, service, clinic, flushing rim, wall hung (PG-18-1, MCS 22 40 00)
		AR	CC	Receptacle, electrical, quadruplex, 120 volt (PG-18-1, MCS 26 27 26)
		1	CC	Nurse call duty station, wall mounted (PG-18-1, MCS 27 52 23)
		1	CC	Outlet, telephone, wall mounted (PG-18-1, MCS 27 15 00)
F0535		2	VV	Cart, utility, corrosion resisting steel, 36" x 18" x 30" (900 mm x 450 mm x 750 mm)
F2000		1	VV	Receptacle, waste, 13" (325 mm) diameter
A5075		1	VV	Dispenser, soap, liquid, wall mounted
A5080		1	VV	Dispenser, paper towel, surface mounted
F0510		AR	VV	Carts, soiled, linen

