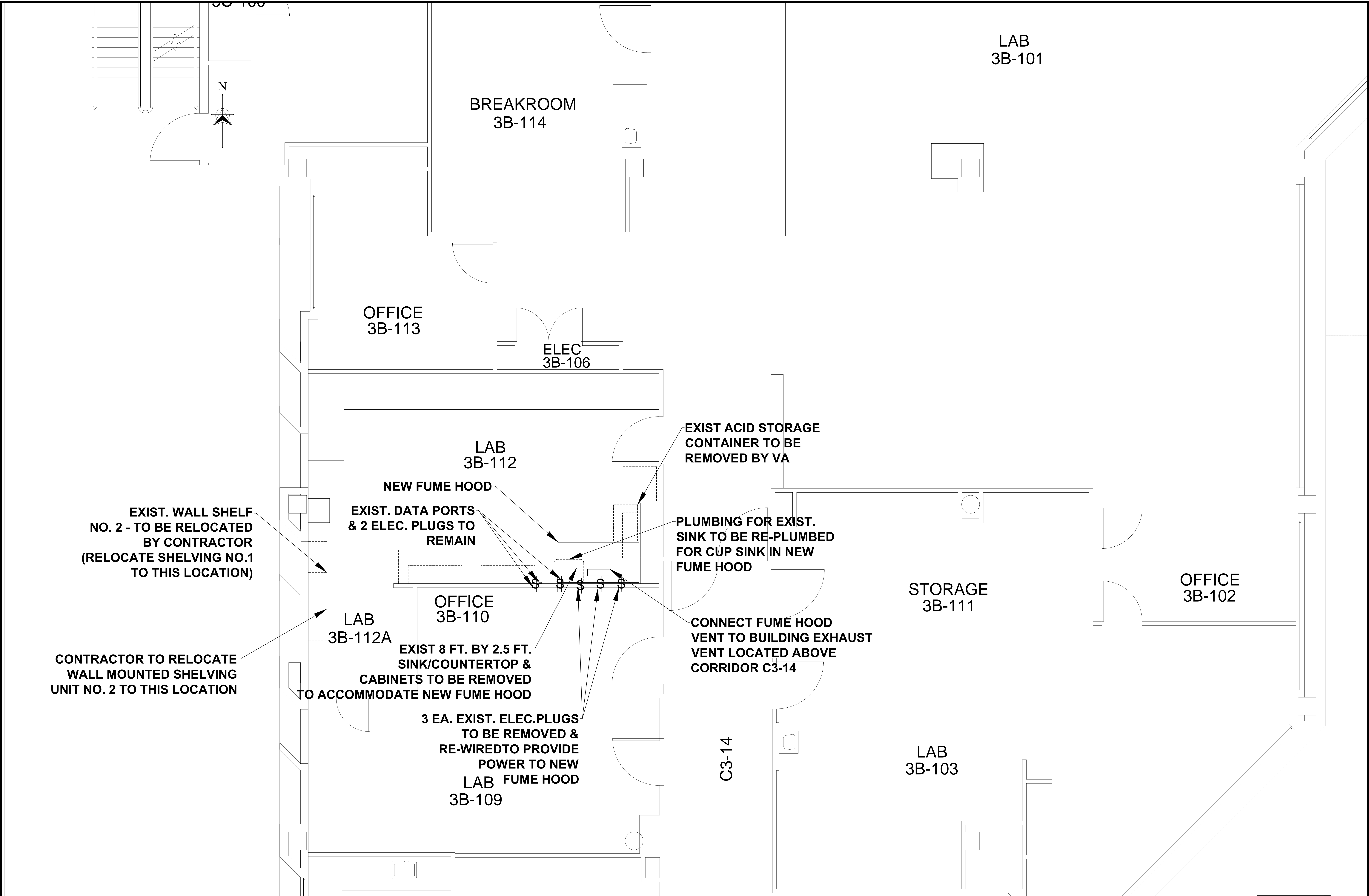


0 6 12 18  
three inches = one foot  
0 6 12  
one and one-half inches = one foot  
0 6 12  
one inch = one foot  
0 6 12  
three-quarters inch = one foot  
0 6 12  
one-half inch = one foot  
0 6 12  
three-eighths inch = one foot  
0 6 12  
one-quarter inch = one foot  
0 6 12  
one-eighth inch = one foot



NOTES:

SCALE : 3/8" = 1'-0"

Approved:

PROGRAM MANAGER, PROJECTS \_\_\_\_\_

SAFETY/INDUSTRIAL HYGIENE \_\_\_\_\_

HEALTH SYSTEM SPECIALIST \_\_\_\_\_

MAINTENANCE SUPERVISOR \_\_\_\_\_

MAINTENANCE FOREMAN \_\_\_\_\_

MAINTENANCE FOREMAN \_\_\_\_\_

Drawing Title

**BUILDING 3  
THIRD FLOOR  
NEW FUME HOOD**

Approved: Service Engineer \_\_\_\_\_

Approved: Service Director \_\_\_\_\_

Project Title

**INSTALL CART WASHER  
UTILITIES, BUILDING 3**

Building Number  
B3

Checked  
B ROBERTS

Location  
VAMC BILOXI, MS

Date  
03/28/14

Project No.  
520-14-117

DRAWING NO.  
4

Dwg. 4 of 4



Department of  
Veterans Affairs