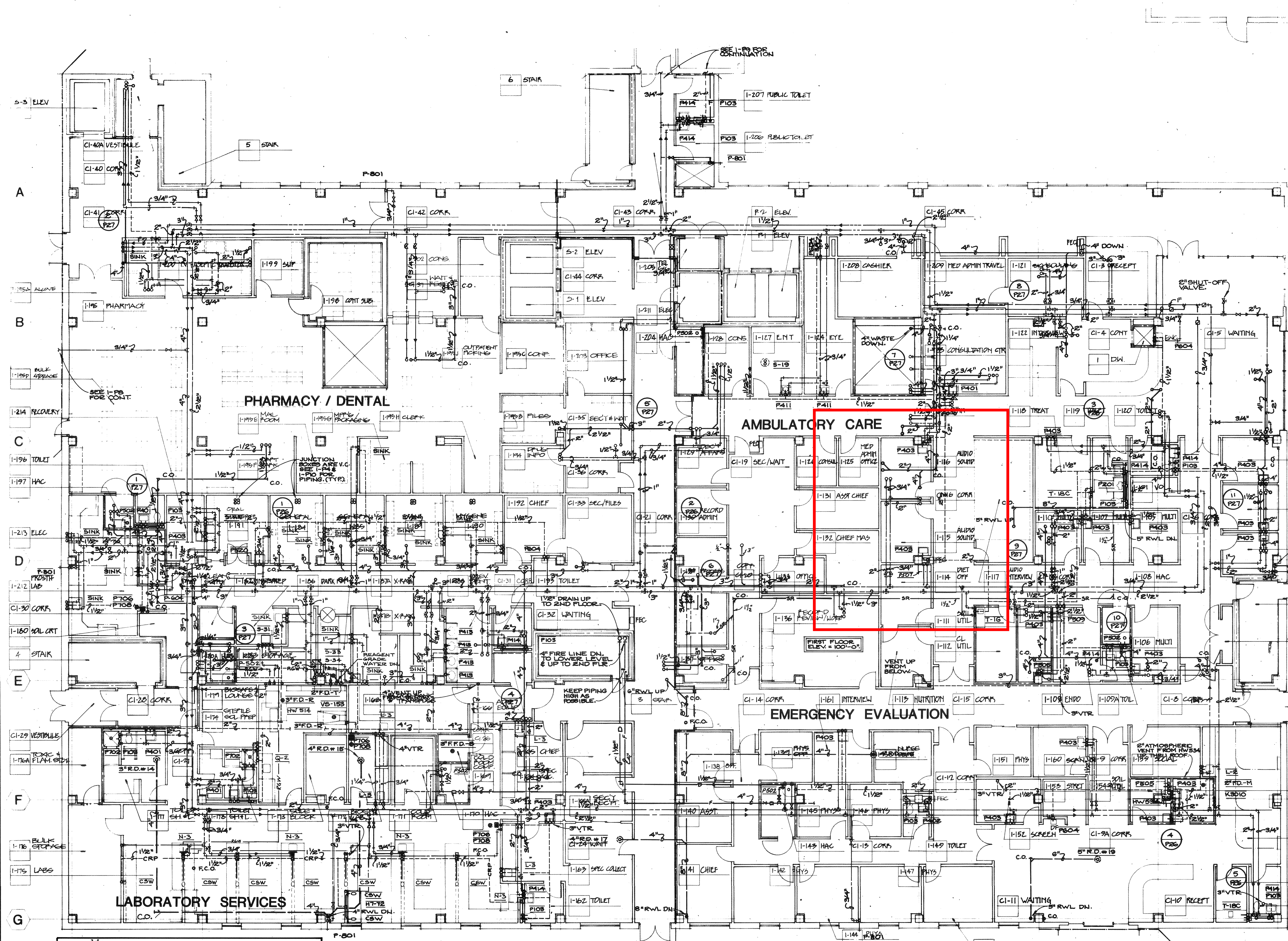


one and one half inches = one foot
three quarters inch = one foot
one inch = one foot
three quarters inch = one foot
one half inch = one foot
three eighths inch = one foot
one quarter inch = one foot
one eighth inch = one foot



PLUMBING FIXTURE CONNECTION SCHEDULE						
FIXTURE NUMBER	WASTE	VENT	SERVICE SIZE			REMARKS
			C.W.	H.W.	R.G.W.	
P-103	4"	2"	1-1/2"			W.H.
P-201	2"	2"	1"			W.H.
P-401	1-1/2"	1-1/2"	1/2"	1/2"		
P-402	1-1/2"	1-1/2"	1/2"	1/2"		
P-403	1-1/2"	1-1/2"	1/2"	1/2"		F.P.C.
P-411	1-1/2"	1-1/2"	1/2"	1/2"		WITH INSTRUMENT TRAYS AND FPC
P-414	1-1/2"	1-1/2"	1/2"	1/2"		WRIST CONTROL, GOOSENECK
P-502	3"	1-1/2"	3/4"	3/4"		FLOOR MOUNTED
P-505	4"	2"	1-1/2"	3/4"		W/D.B. (WHEN REQUIRED) W/B.P.W.
P-509	1-1/2"	1-1/2"	3/4"	3/4"		SINGLE D.B. - F.P.C.
P-520	1-1/2"	1-1/2"	3/4"	3/4"		KNEE CONTROL
P-604	1-1/2"	1-1/2"	1/2"			W.H. - BUBBLER
P-702	2"	1-1/2"	1/2"	1/2"		2" FD-C
P-706			1-1/4"			DRAIN NOT REQUIRED
P-708	1-1/2"	1-1/2"	3/4"			W. MTD.
L-2	1-1/2"	1-1/2"	1/2"	1/2"		
L-3	1-1/2"	1-1/2"	1/2"	1/2"		
N-3	1-1/2"	1-1/2"	1/2"	1/2"		
Q-2	1-1/2"	1-1/2"	1/2"	1/2"		
T-16	1-1/2"	1-1/2"	1/2"	1/2"		
T-18C	1-1/2"	1-1/2"	1/2"	1/2"		
CSW	1-1/2"	1-1/2"	1/2"			
SINK	1-1/2"	1-1/2"	1/2"	1/2"		
S-19	1-1/2"	1-1/2"	1/2"			
S-31	1-1/2"	1-1/2"	3/4"	3/4"	3/4"	
S-33	1-1/2"		3/4"			OPEN SITE DRAIN.
S-34	1-1/2"		3/4"			OPEN SITE DRAIN
HW-514	2"		3/4"			OPEN SITE DRAIN. W/DISTILLED WATER ACCUMULATOR AND PRESSURIZING TANK.

ALL CONTRACTORS TO WORK CLOSE TOGETHER ON THIS LEVEL DO TO LIMITED CHASING SPACE. SEE BUILDING SECTIONS ON SHEET 1-15.

7-4-1-1196

FOR ADDITIONAL NOTES & SYMBOLS SEE DRAWING 1-P.

REVISE 3/4" REAGENT GRADE WATER PIPING TO DROP THRU SECOND FLOOR SLAB, THEN TO SERVE THREE N-3 SINKS IN ROOM 1-175, THEN UNIT S-31 IN ROOM 1-182, THEN UNIT HW514 IN ROOM 1-174, THEN UNIT S-34 IN ROOM 1-186, THEN RISE TO SECOND FLOOR.

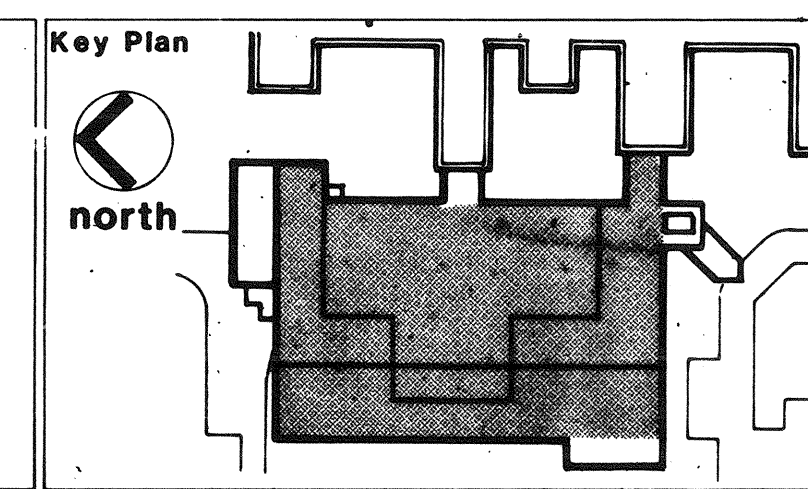
AS BUILT DATA NO AVAILABLE TO A/E

FIRE PROTECTION FIRE PROTECTION
ZONE 2-4-3 ZONE 2-4-4

FULLY PROTECTED BY AUTOMATIC SPRINKLER SYSTEM

Revisions 4-23-90 Record Drawings.

General Notes



I hereby certify that this plan, specification, or report was prepared by me or under my direct supervision and that I am a duly registered Professional Engineer under the laws of the state of Wyoming.

Robert M. Paraphy

Registration Number :5087

BANNER
Banner Associates, Inc.
CONSULTING ENGINEERS & ARCHITECTS
1007-440 COURT P.O. BOX 159
LAFAYETTE, IN 47901-0159
HGA
Hammel Green and Abramson
Architects & Engineers
1201 Harmon Place
Minneapolis, Minnesota 55403

Drawing Title
FIRST FLOOR PLAN
PLUM. & FIRE PROTECTION
1/8" = 1'-0"

Approved Project Director
A. Pappas

Project Title
VETERANS ADMINISTRATION
MEDICAL CENTER ADDITION
AND ALTERATION

Building Number
BLDG. NO. 1
Location
CHEYENNE WY.

Date
11-2-87
Project No
442-023
Drawing No
1-P5
Dwg. 6 of 10

Veterans Administration