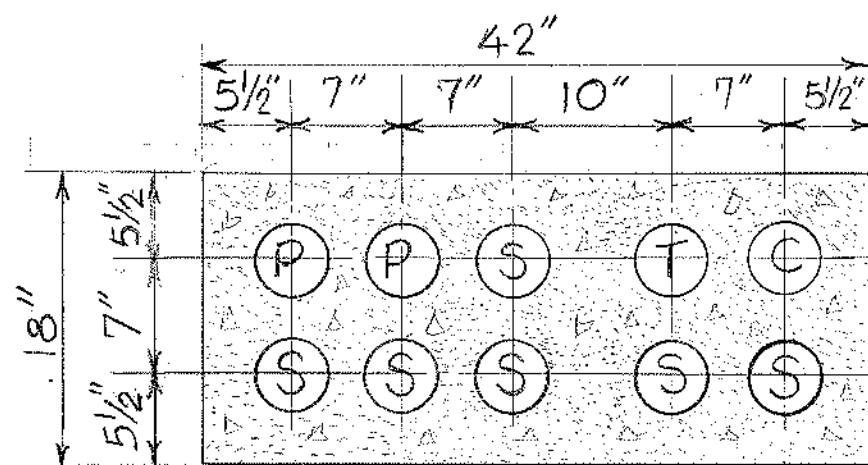
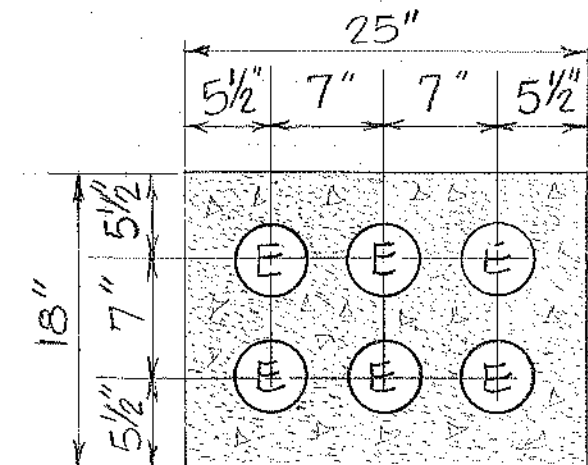


COOLING PLANT- TOWER & SUBSTATION YARDS- POWER
SCALE: 1/8" = 1'-0"



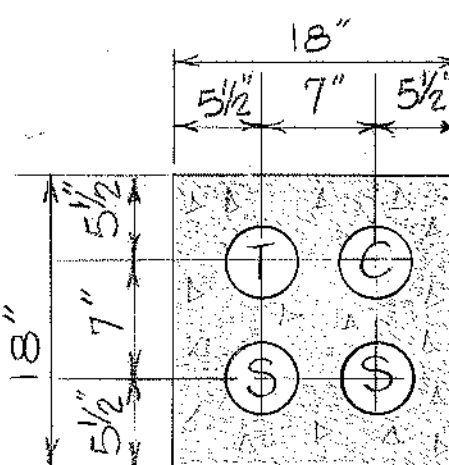
P = 4" POWER DUCT (15KV)
S = 4" SPARE DUCTS
T = 4" TELEPHONE DUCT
C = 4" CONTROL & SIGNAL DUCT

DUCT BANK SECTION "A"
NO SCALE



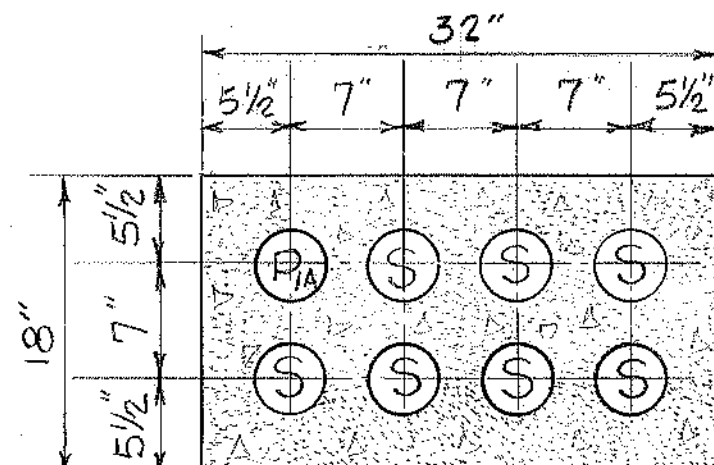
E = 4" EMPTY POWER DUCTS

DUCT BANK SECTION "B"
NO SCALE



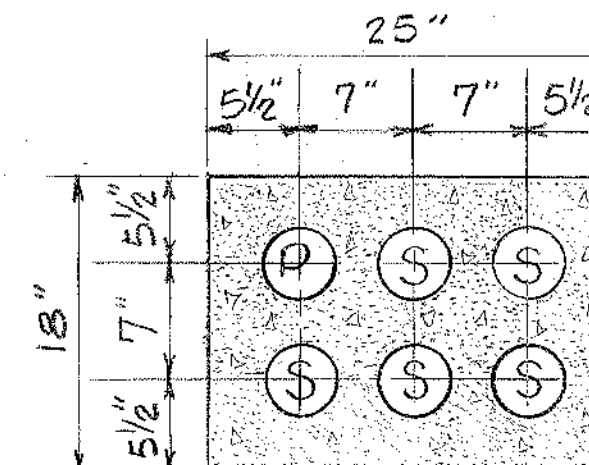
T = 4" TELEPHONE DUCT
C = 4" CONTROL & SIGNAL DUCT
S = 4" SPARE DUCT

DUCT BANK SECTION "C"
NO SCALE



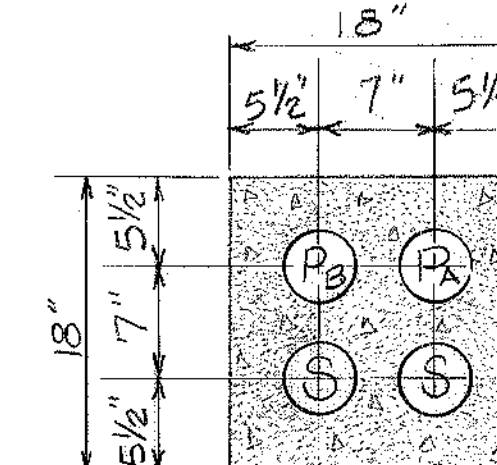
P_{1A} = 4" POWER DUCT, FEEDER 1A
15 KV.
S = 4" SPARE DUCTS

DUCT BANK SECTION "D"
NO SCALE



P = 4" POWER DUCT, 15KV
S = 4" SPARE DUCT

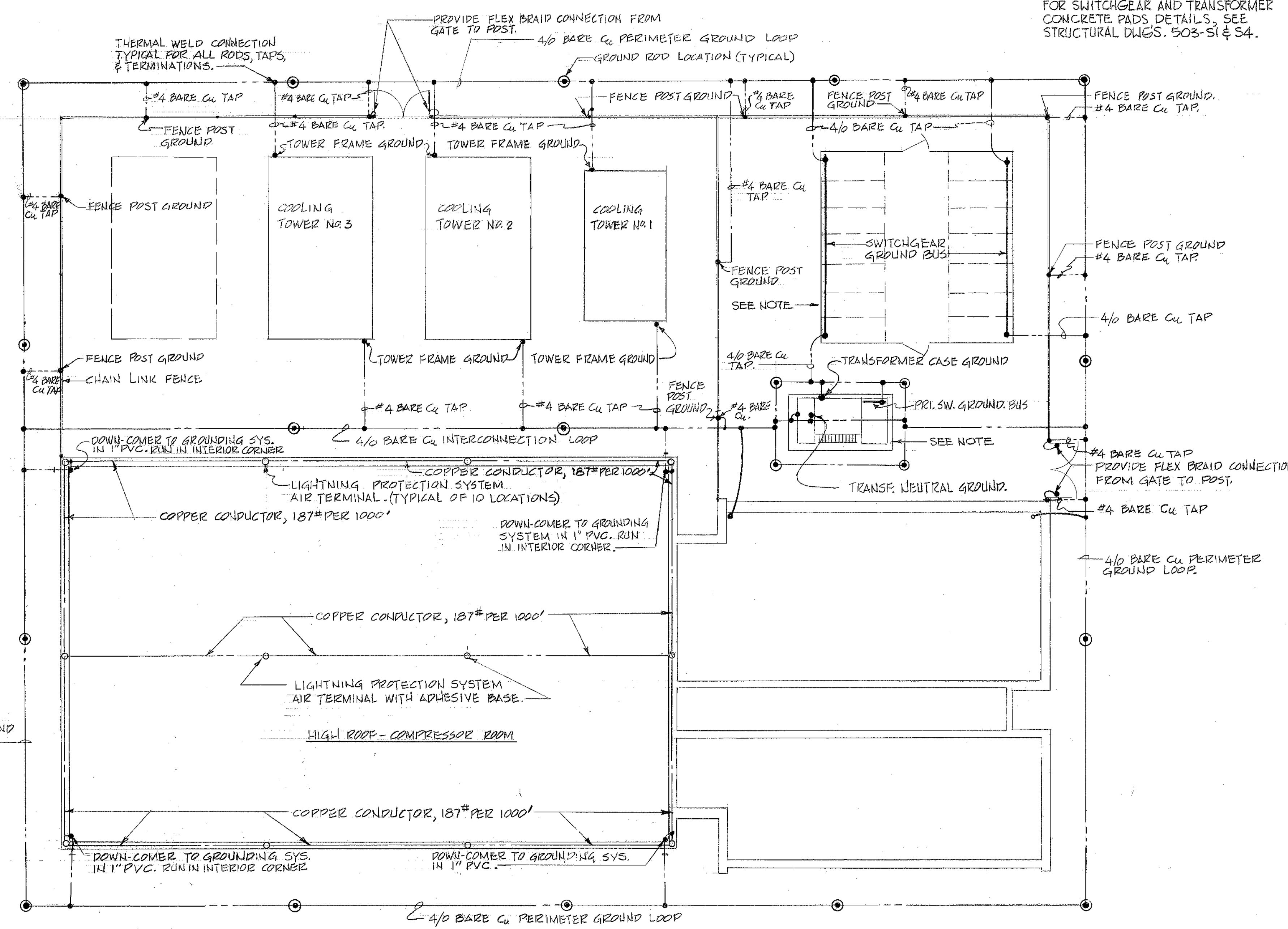
DUCT BANK SECTION "E"
NO SCALE



P₂ = 4" SERVICE DUCT, 15KV, LINE A
P₃ = 4" SERVICE DUCT, 15KV, LINE B
S = 4" SPARE DUCT

DUCT BANK SECTION "F"
NO SCALE

COOLING PLANT- GROUNDING & LIGHTNING PROTECTION PLANS
SCALE: 1/8" = 1'-0"



NOTE: FOR SWITCHGEAR AND TRANSFORMER CONCRETE PADS DETAILS, SEE STRUCTURAL DWGS. 503-S1 & S4.

NO.	DATE	DESCRIPTION
REVISIONS		
SHEET TITLE UTILITIES-COOLING PLANT		
COOLING PLANT- EXTERIOR POWER, GROUNDING & LIGHTNING PROTECTION		
BUILD. NO.	PROJECT TITLE	DATE
503	REPLACEMENT HOSPITAL - PHASE II 200 BED DOMICILIARY 120 BED NURSING HOME - UTILITIES	14 JUNE 78
DRAWN	CHECKED	DATE
C.P.	G.T.H.	14 JUNE 78
GATES / LBC&W / BMA ARCHITECTS ENGINEERS PLANNERS		
100 NORTH PITT STREET ALEXANDRIA, VIRGINIA 22314		
APPROVED	PROJECT DIRECTOR	DWG. NO. OF PROJECT NUMBER
		613 - 012E
VETERANS ADMINISTRATION		
LOCATION		
VAC MARTINSBURG, WEST VIRGINIA		



AS BUILT
4/27/82

THREE INCHES EQUALS ONE FOOT ONE AND ONE HALF INCHES EQUALS ONE FOOT ONE INCH EQUALS ONE FOOT THREE QUARTER INCH EQUALS ONE FOOT ONE HALF INCH EQUALS ONE FOOT THREE EIGHTH INCH EQUALS ONE FOOT ONE QUARTER INCH EQUALS ONE FOOT ONE EIGHTH INCH EQUALS ONE FOOT