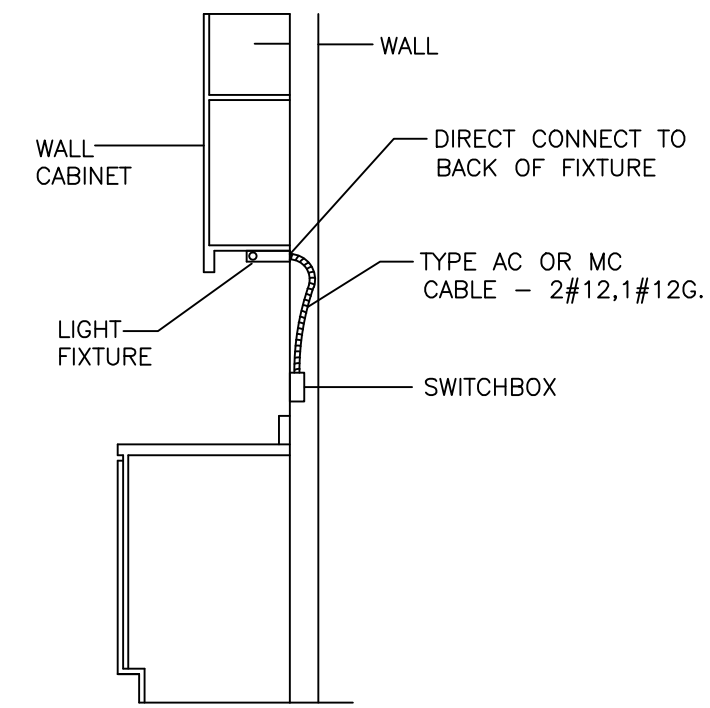


- NOTES:
- REGARDLESS OF WHERE THE RECEPTACLE IS LOCATED, ALL CIRCUITS SHALL BE LABELED IN THIS MANNER.
  - DETAILS SHOWN IS FOR QUADRUPLUX RECEPTACLE OUTLETS. SIMILAR FOR DUPLEX RECEPTACLE OUTLETS.
  - PROVIDE LABELS FOR ALL NEW AND EXISTING RECEPTABLES.

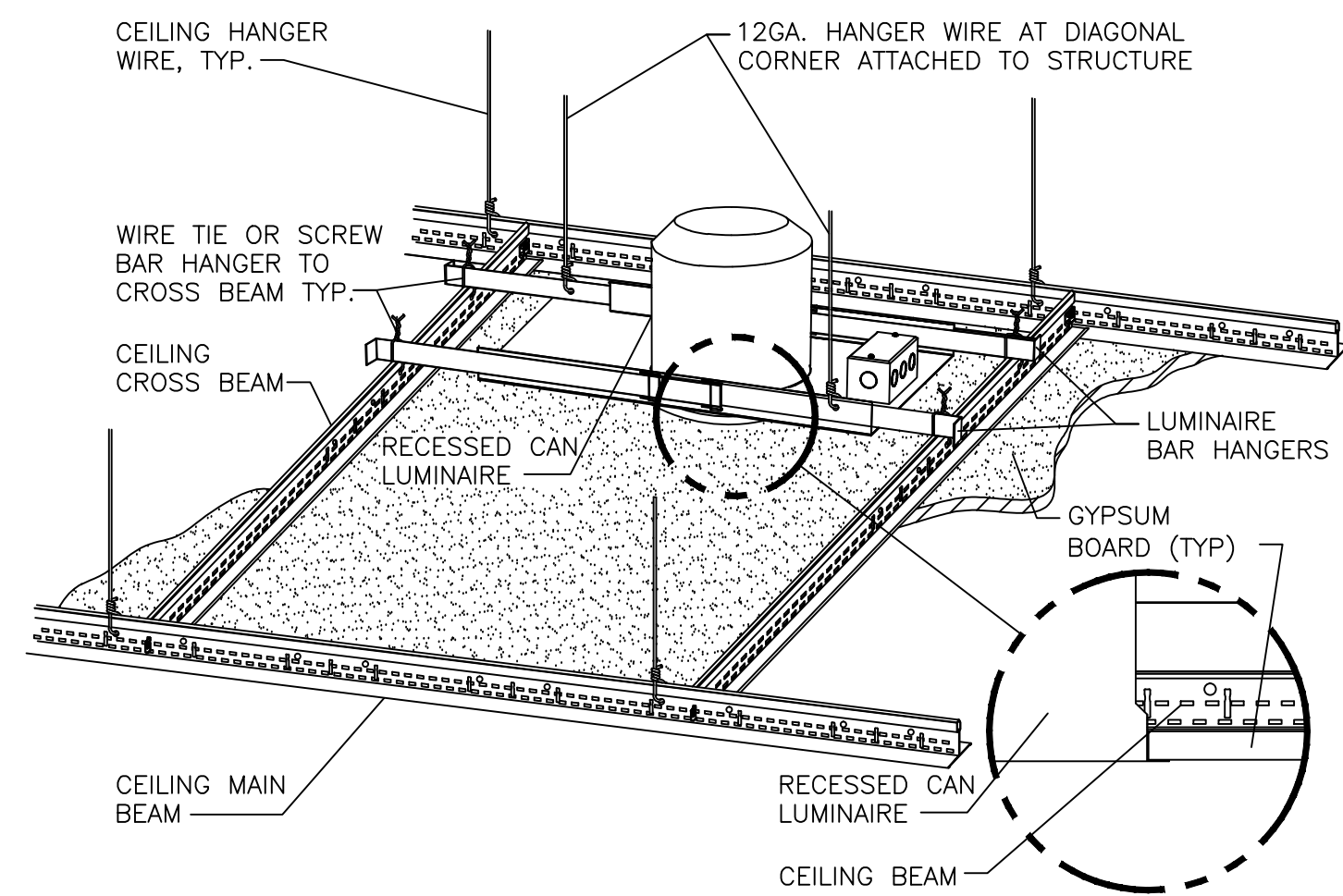
### 6 DETAIL: RECEPTACLE LABELING

SCALE: NOT TO SCALE



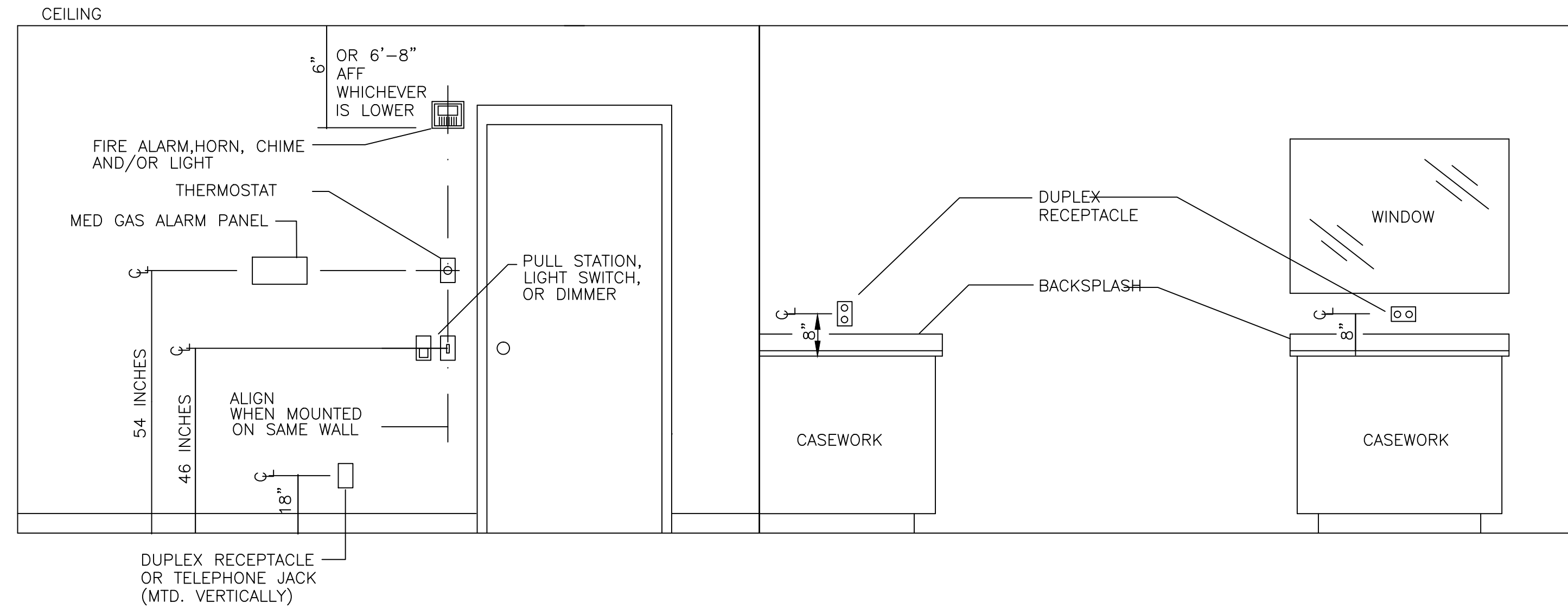
### 3 TYP. WIRING FOR U.C. LIGHTS

SCALE: NOT TO SCALE



### DOWNLIGHT MOUNTING - GYPBOARD CEILING

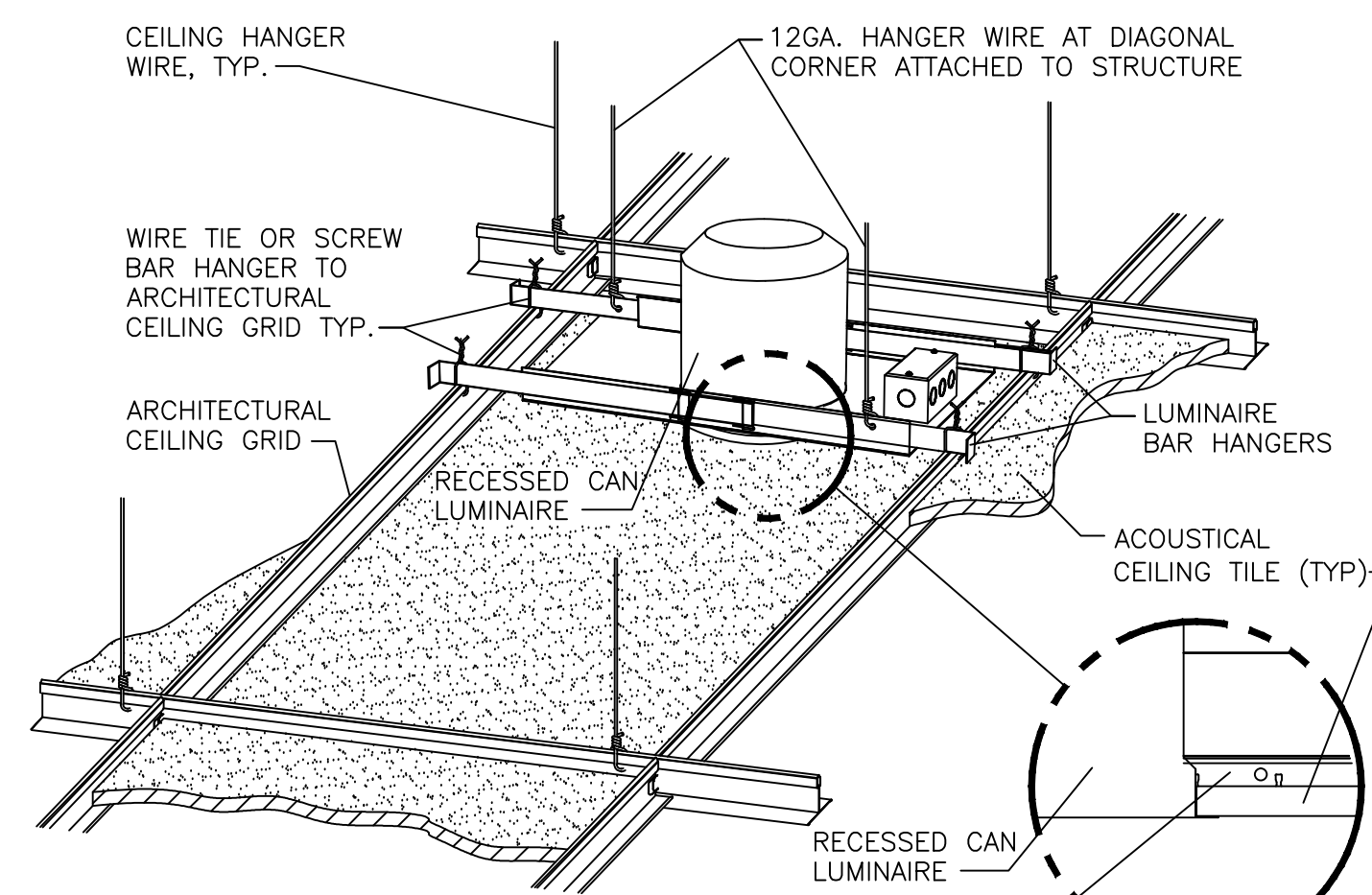
NTS



NOTE: SWITCHES ARE TO BE GANGED WHERE SHOWN ADJACENT TO EACH OTHER ON PLANS.

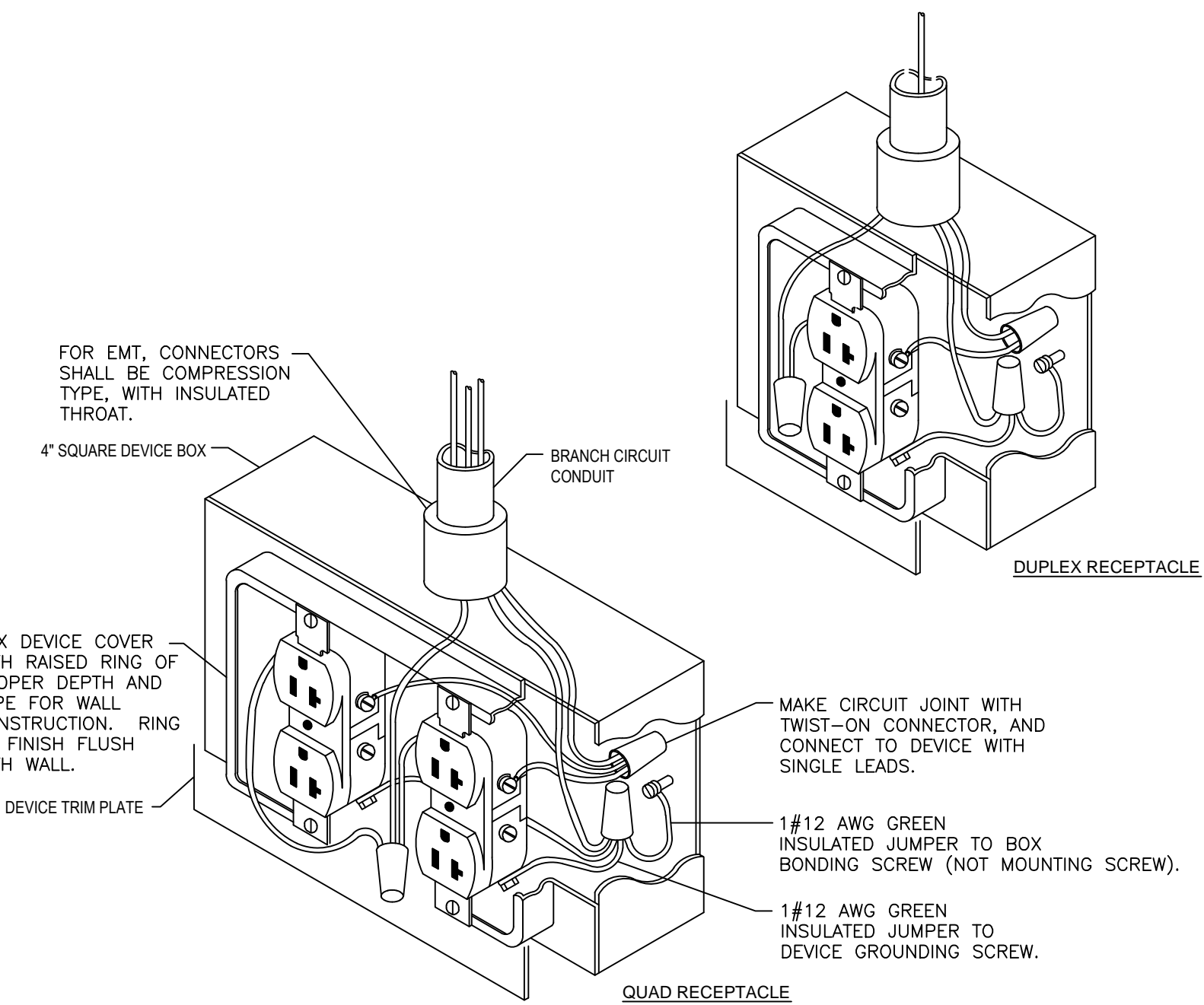
### 1 TYPICAL MOUNTING HEIGHTS

SCALE: NOT TO SCALE



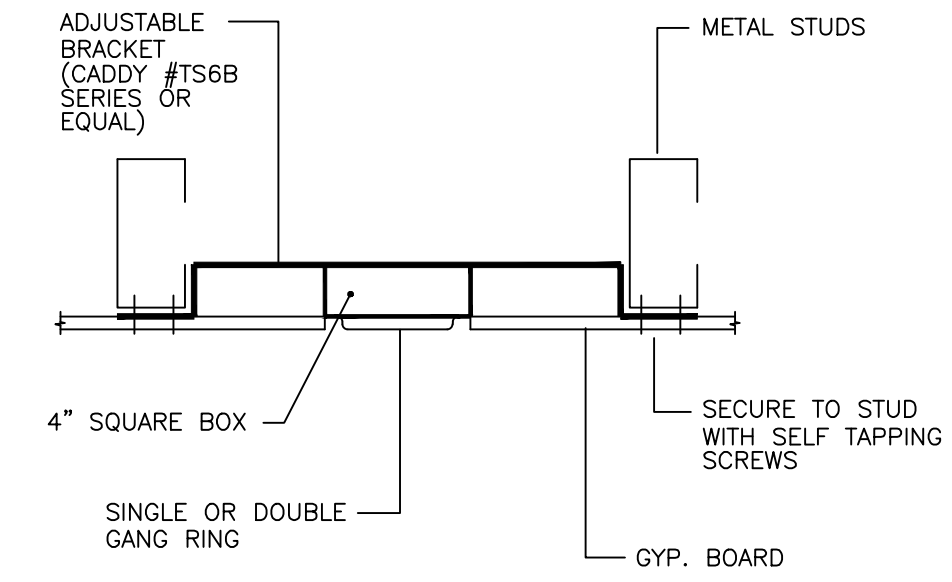
### DOWNLIGHT MOUNTING - LAY-IN CEILING

NTS



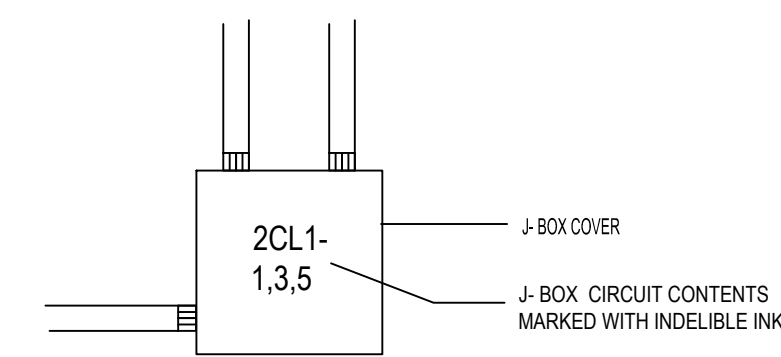
### DETAIL: TYPICAL RECEPTACLE WIRING DIAGRAM

SCALE: NOT TO SCALE



### 2 DETAIL: ELECTRICAL BOX MOUNTING

SCALE: NOT TO SCALE



### 5 DETAIL: JUNCTION/PULLBOX COVERPLATE LABELING

SCALE: NOT TO SCALE

NOTE: ALL EXPOSED J-BOXES, NOT INCLUDING ELECTRICAL OR MECHANICAL ROOMS, SHALL BE MARKED ON THE INSIDE COVER. ALL OTHERS SHALL BE MARKED ON THE OUTSIDE.

REVISIONS	BY
#	

BUILDING 204  
RENOVATE AUDIOLOGY  
COVER SHEET  
3/7/14

JAMES H. QUILLEN  
A MEDICAL CENTER  
SEAL OF THE UNIVERSITY OF MICHIGAN

DRAWN BY	PROJ. MGR
CLAWSON	PROSAK
ORIGINAL DATE	3/7/14
LAST REVISION	1-17-14
SCALE	1/8"=1'-0"

E-501