

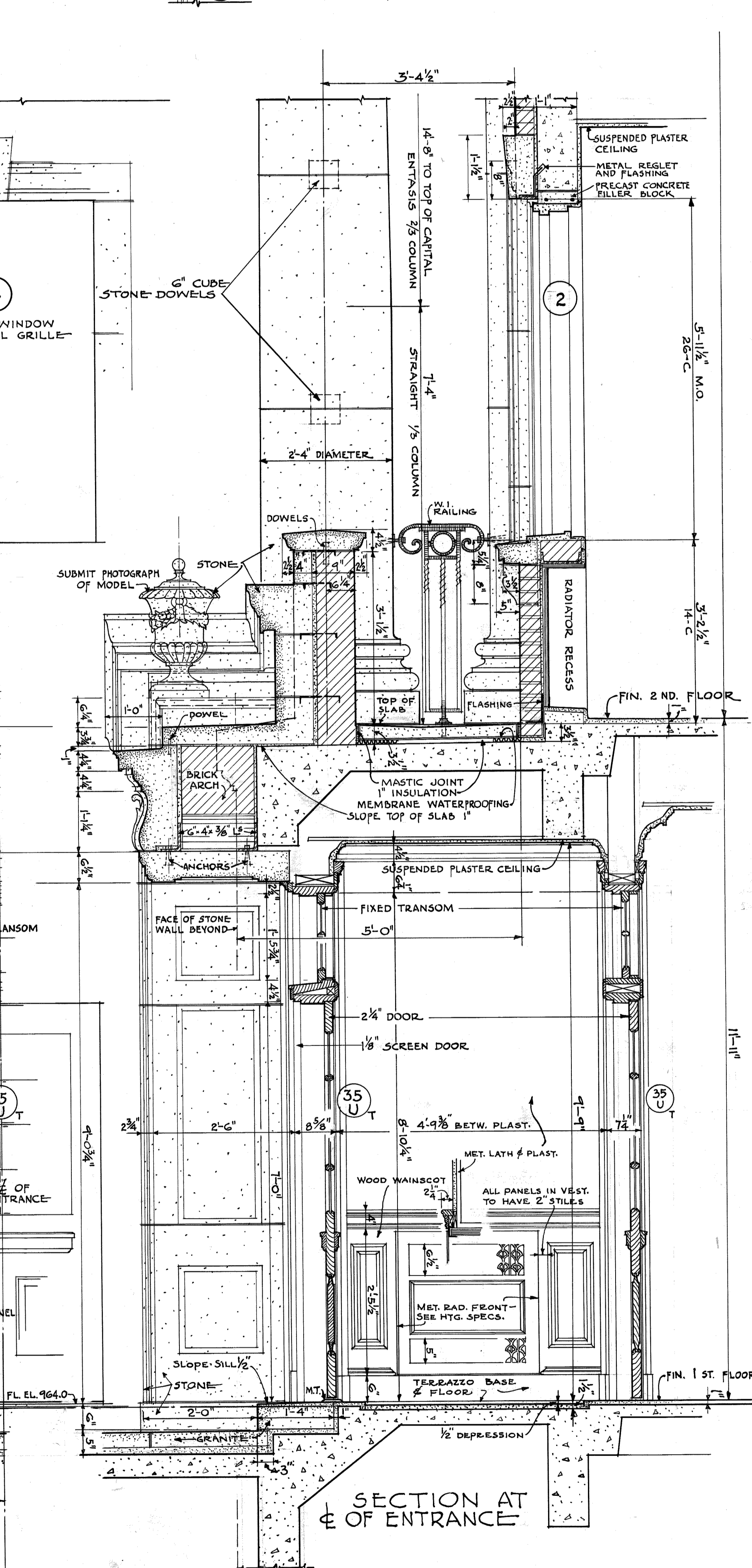
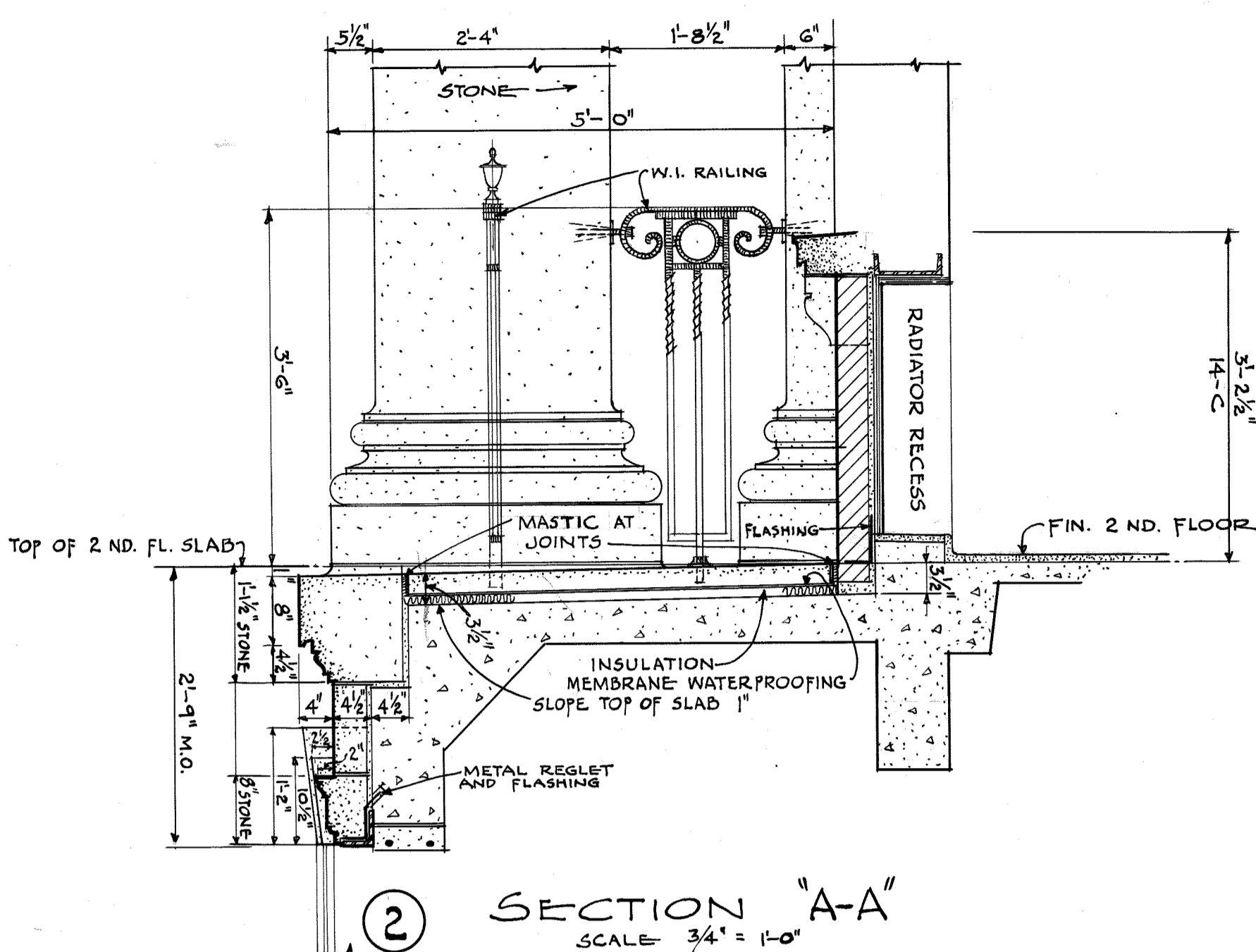
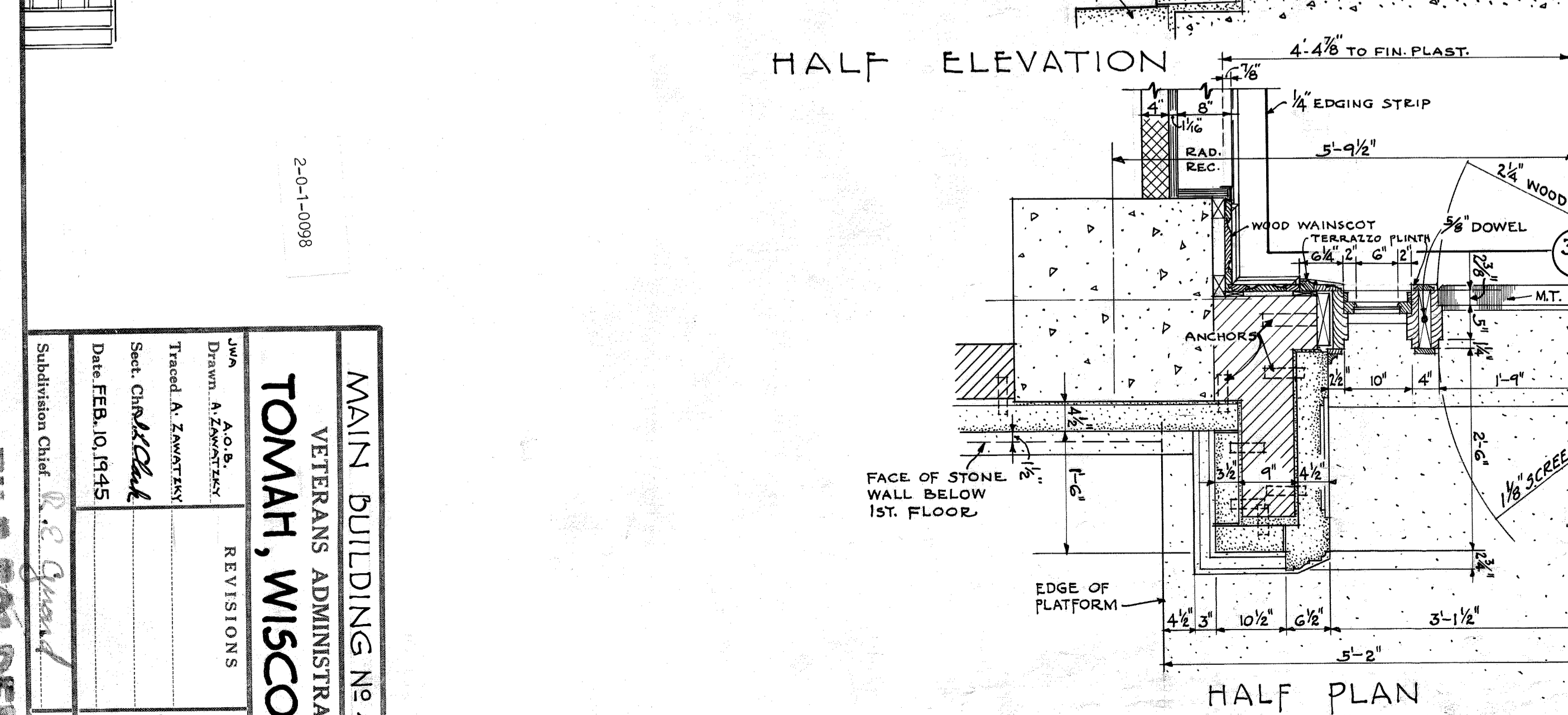
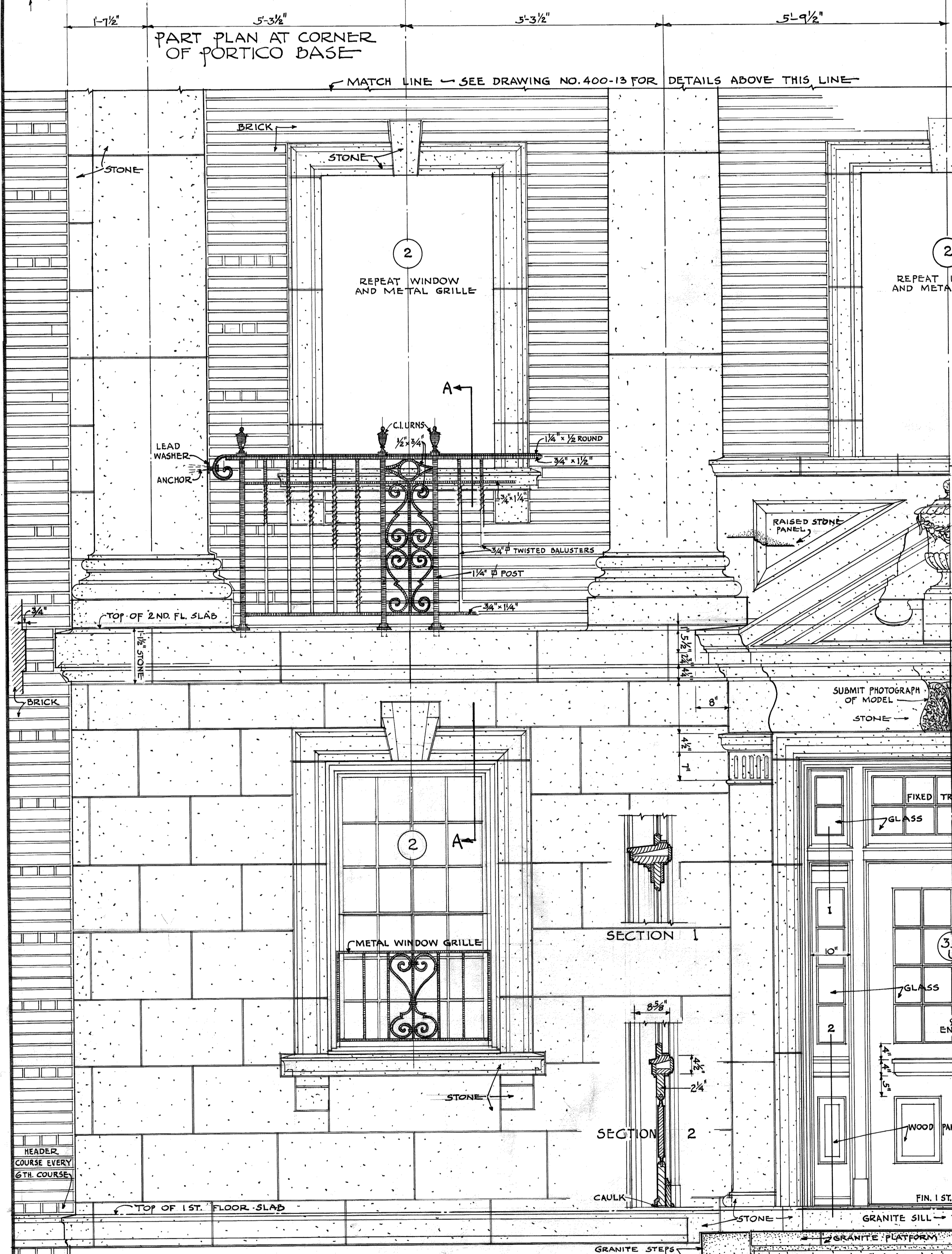
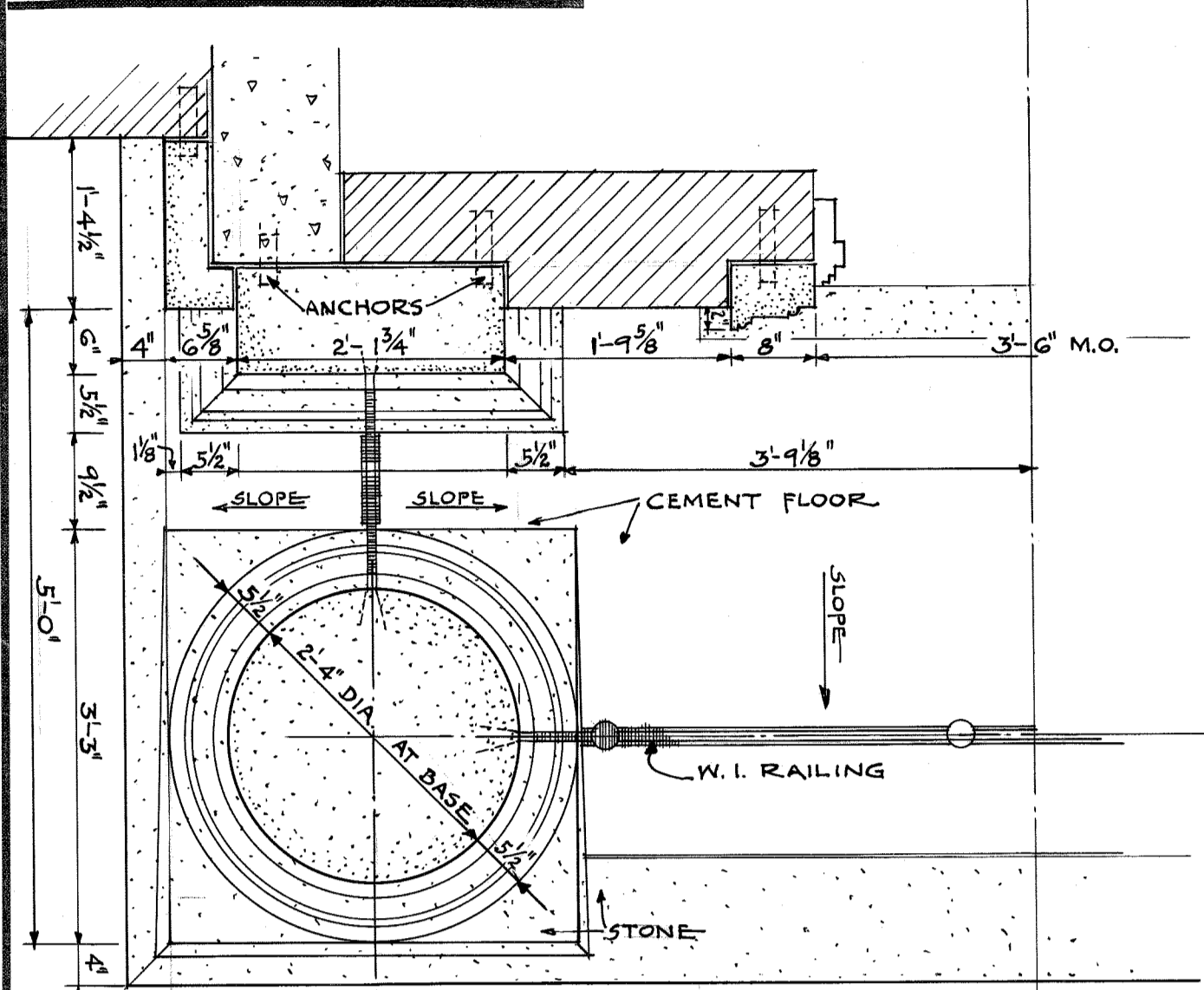
VETERANS ADMINISTRATION
WASHINGTON, D. C.

APPROVED: *Frank C. Moline*
ADMINISTRATOR

George E. Davis
ASSISTANT ADMINISTRATOR

W. J. Sullivan
DIRECTOR OF CONSTRUCTION

CHIEF, TECHNICAL DIVISION



NOTE: FOR DETAILS OF UPPER PORTION OF PORTICO SEE SHEET NO. 400-13. FOR DETAILS OF FRONT ENTRANCE STEPS AND RAILINGS SEE SHEET NO. 400-11. ALL BRICK COURSING IS FIGURED AT 4 COURSES TO 11". ALL VERTICAL JOINING OF STONE AND TERRE COTTA IS APPROXIMATE. THE CONTRACTOR IS TO SUBMIT SHOP DRAWINGS FOR ARCHITECTS APPROVAL.

PORTICO AND MAIN ENTRANCE DETAILS

SCALE 3/4" = 1'-0"

RETURN TRACINGS TO PLAN FILES

FILE FOLDER NO. 2

MAIN BUILDING No 400	
VETERANS ADMINISTRATION	
TOMAH, WISCONSIN	
DATE	REVISIONS
2-0-1-0098	
400-12	NUMBER
400-12	NO. OF 50
400-12	Proj No. 2244