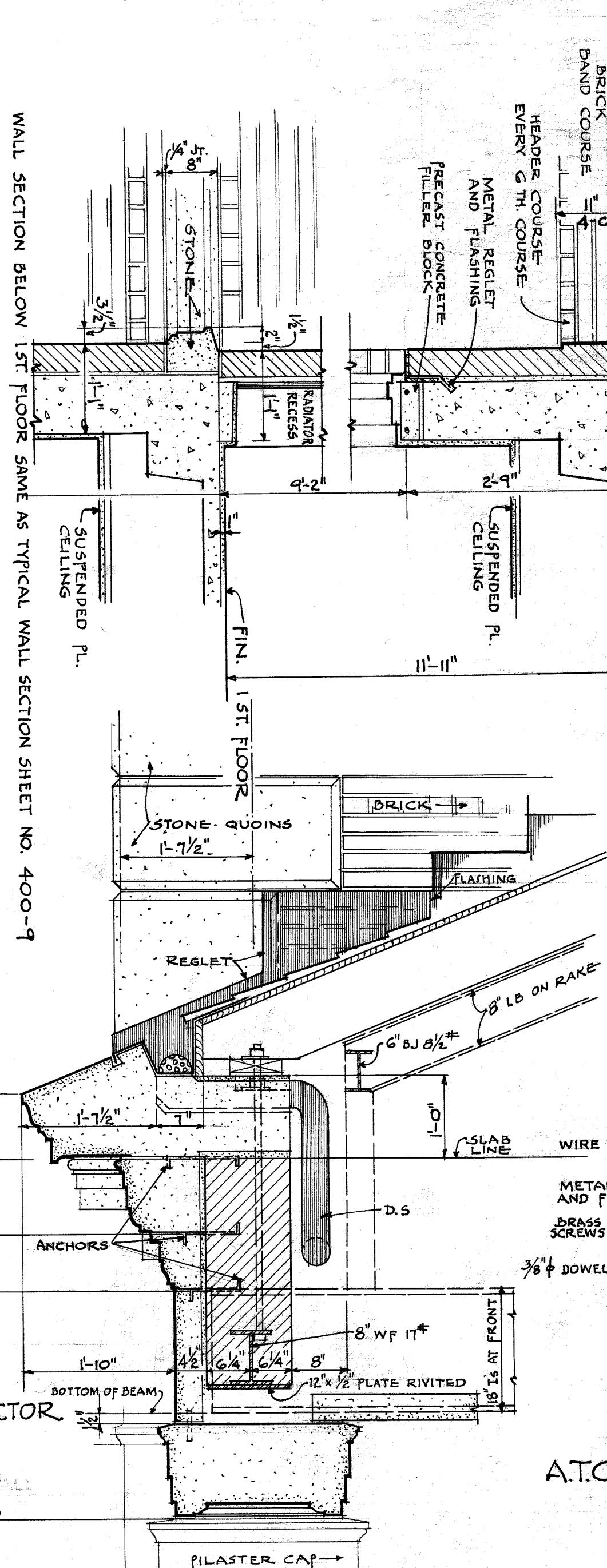
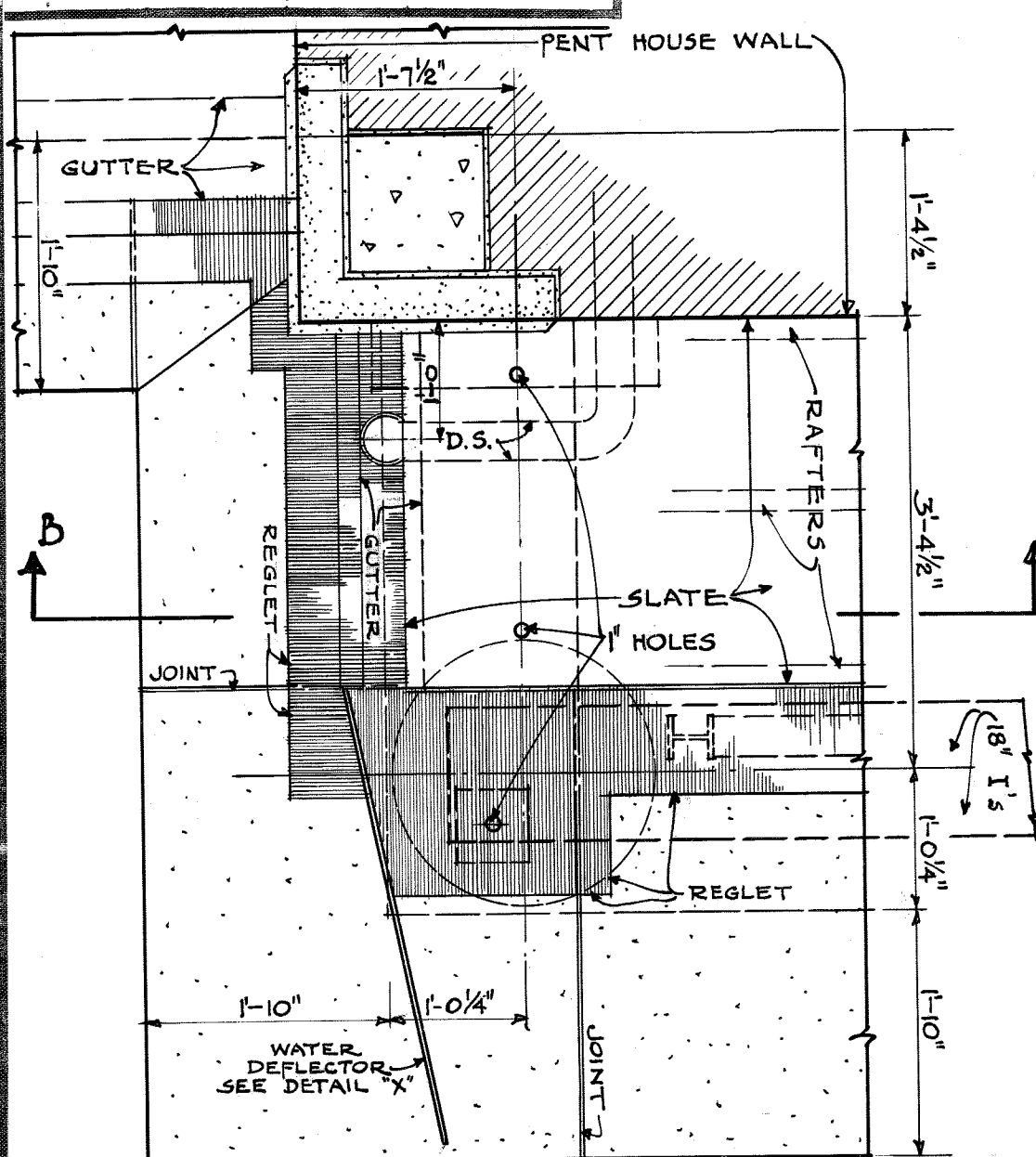


VETERANS ADMINISTRATION  
WASHINGTON, D. C.  
APPROVED: *Charles C. Miller*  
ADMINISTRATOR  
SIGNED: *James P. Gans*  
ASSISTANT ADMINISTRATOR  
DIRECTOR OF CONSTRUCTION  
*W. J. Gans*  
CHIEF TECHNICAL DIVISION

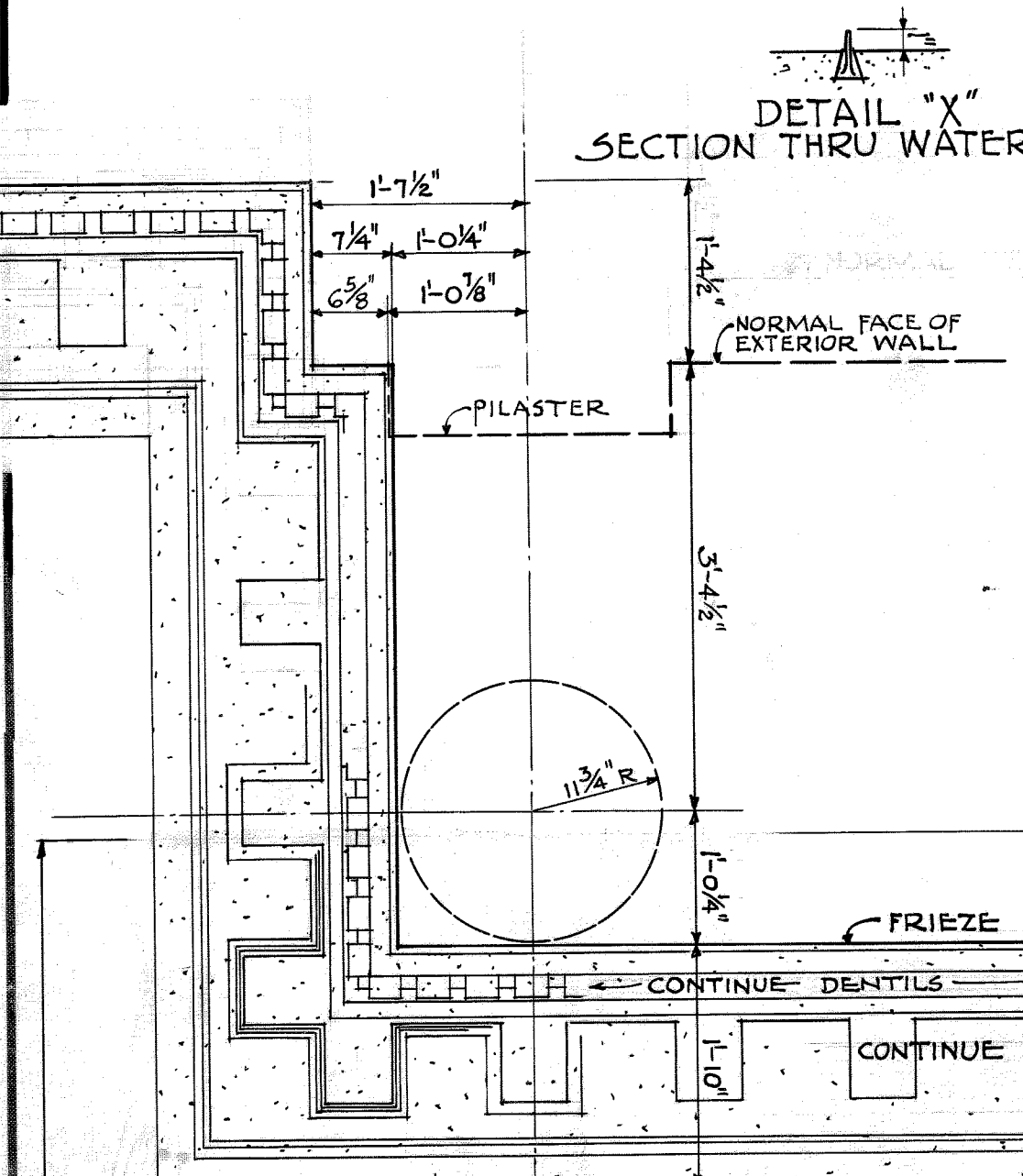
TYPICAL MAIN WALL SECTION



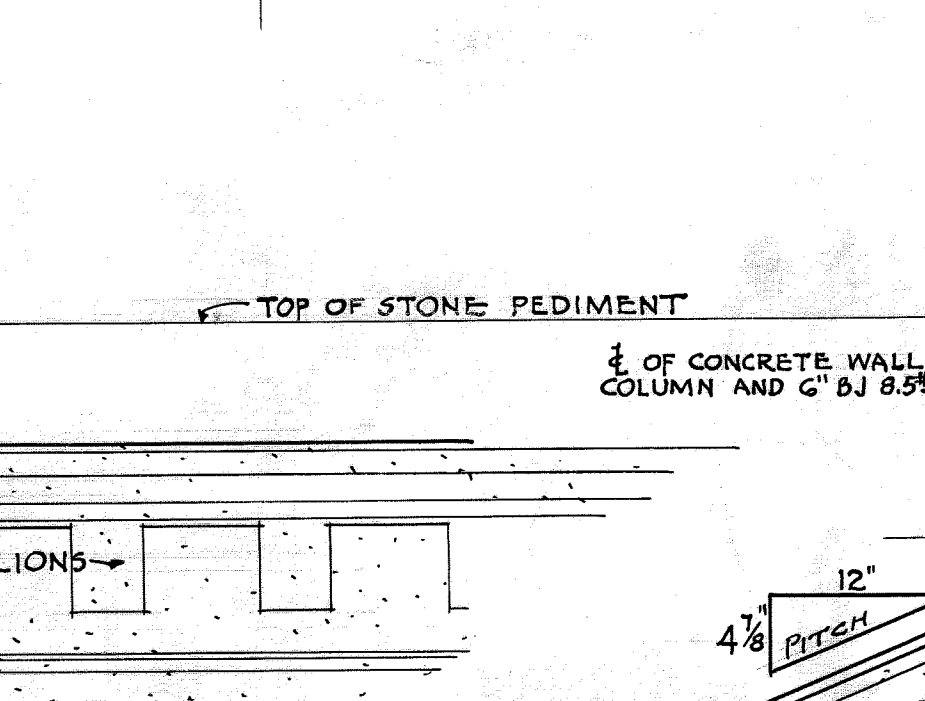
PLAN AT CORNER OF PEDIMENT



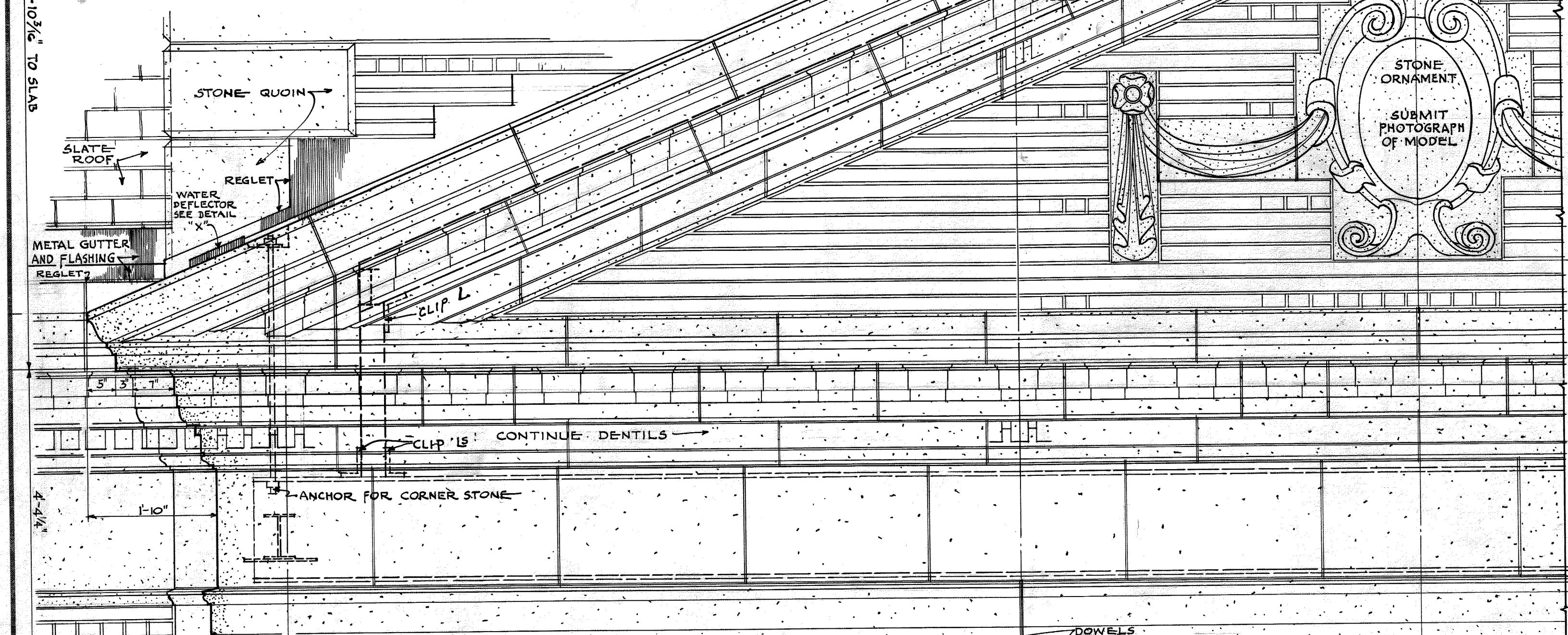
DETAIL "X" SECTION THRU WATER DEFLECTOR



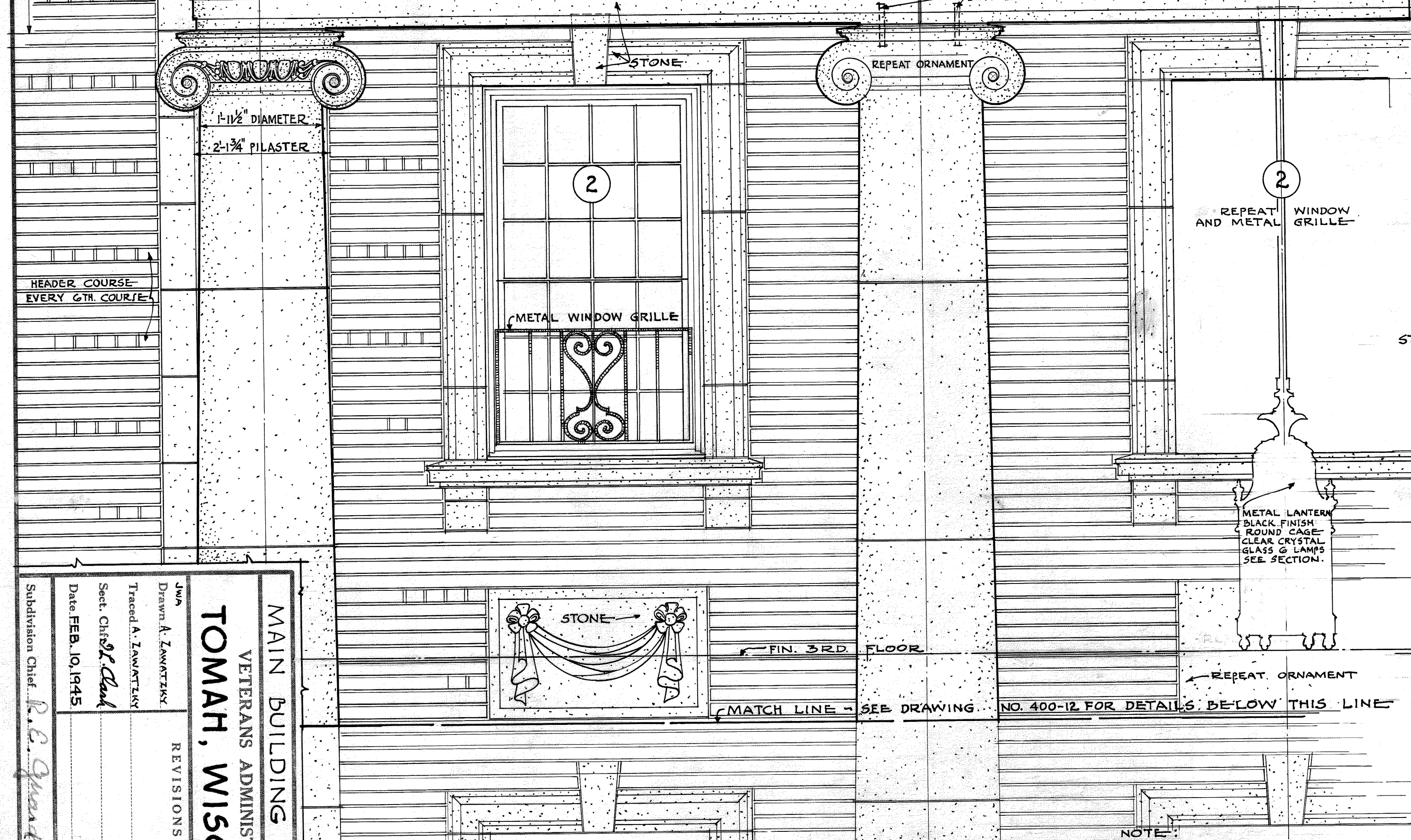
SECTION "B-B" THRU PEDIMENT



REFLECTED PLAN OF CORNICE ABOVE FRIEZE



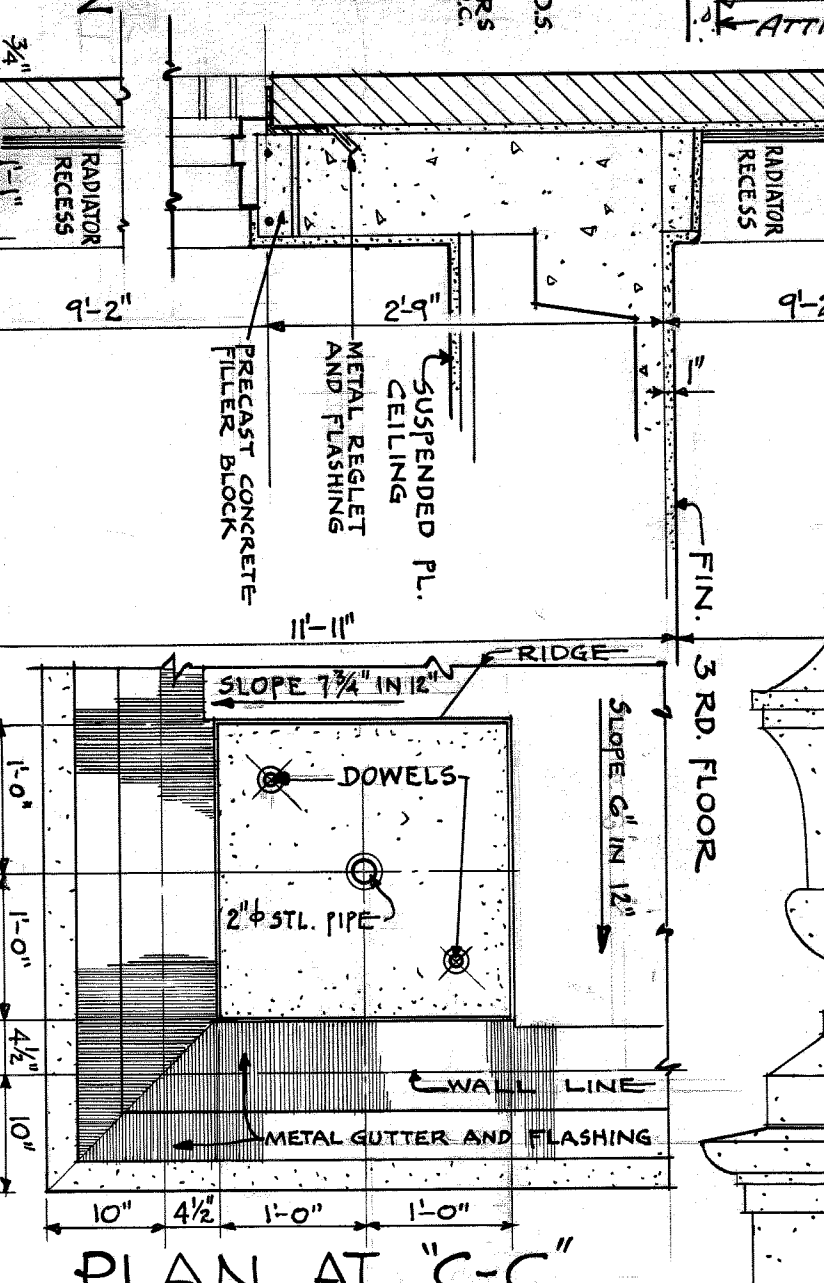
HALF ELEVATION



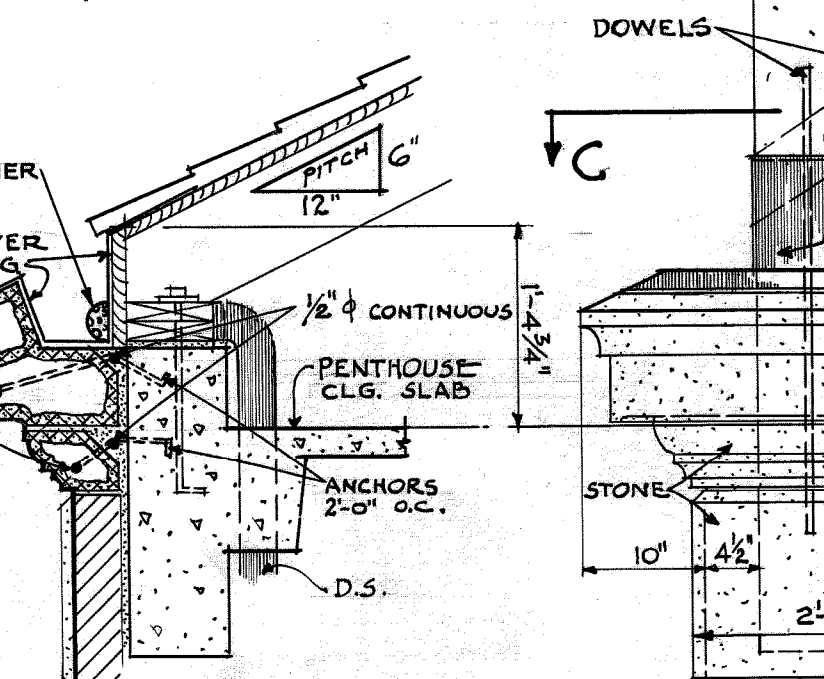
PORTICO AND MAIN ENTRANCE DETAILS

SCALE 3/4" = 1'-0"

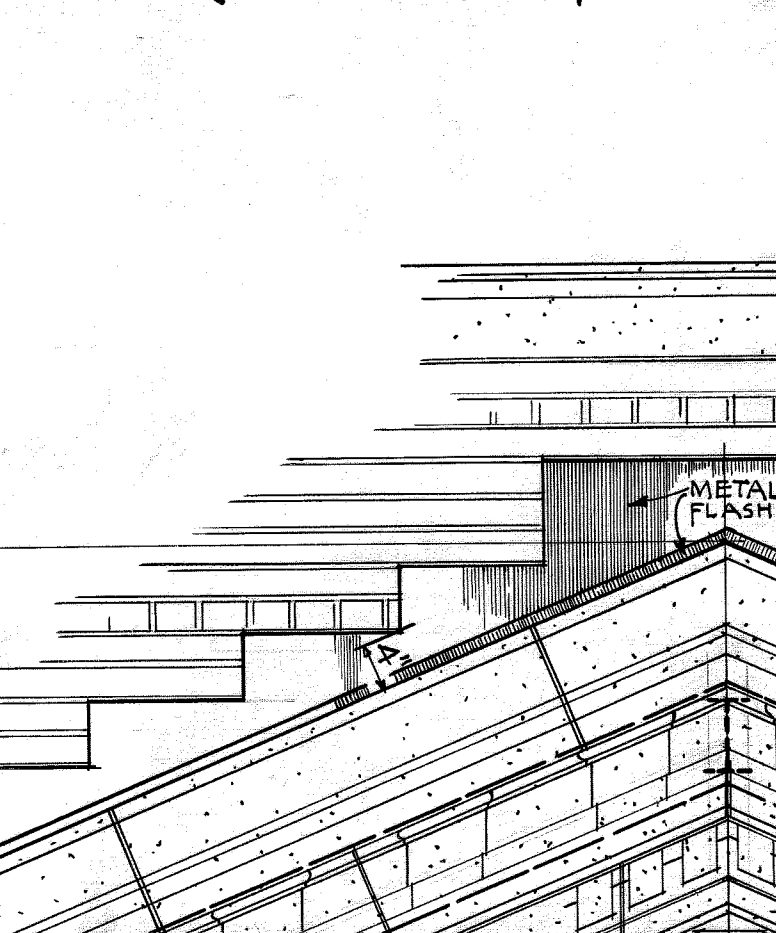
ATC CORNICE FOR MAIN WALL SECTION (ALTERNATE)



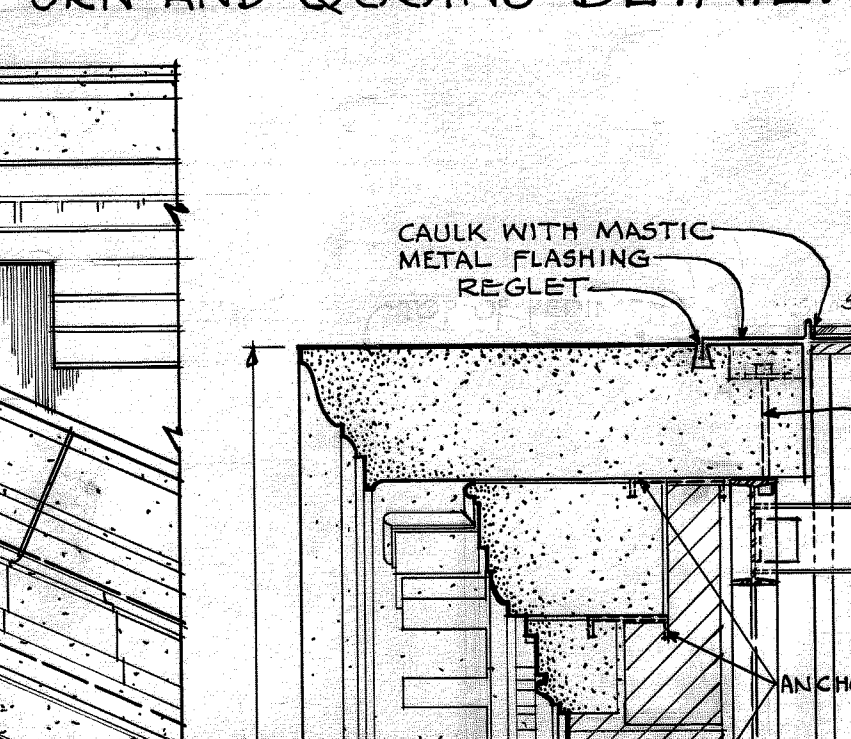
PLAN AT "C-C"



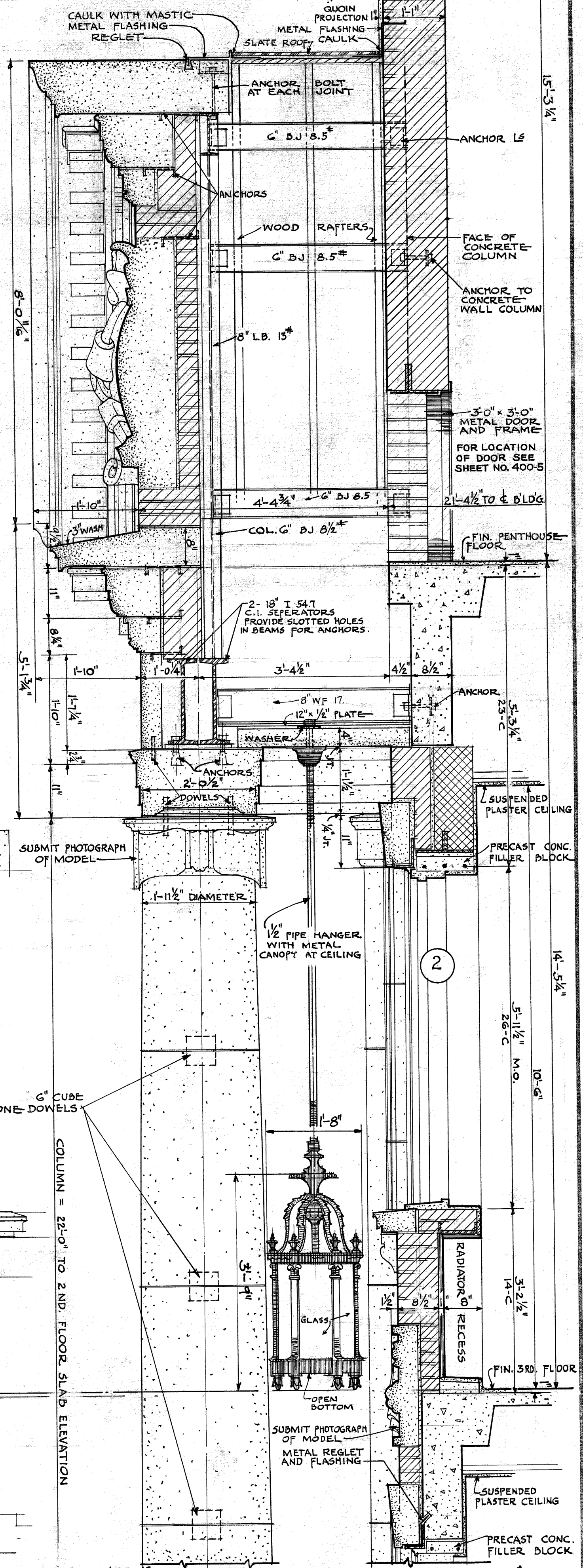
ATC CORNICE AT PENTHOUSE (ALTERNATE)



FRONT ELEVATION OF STONE URN AND QUOINS DETAIL.



SECTION AT & OF ENTRANCE



NOTE:  
FOR DETAILS OF LOWER PORTION OF PORTICO SEE SHEET NO. 400-12.  
FOR DETAILS OF FRONT ENTRANCE STEPS AND RAILINGS SEE SHEET NO. 400-11.  
ALL BRICK COURSING IS FIGURED AT 4 COURSES TO 1' 11".  
ALL VERTICAL JOINING OF STONE AND TERRE COTTA IS APPROXIMATE.  
THE CONTRACTOR IS TO SUBMIT SHOP DRAWINGS FOR ARCHITECT'S APPROVAL.

RETURN TRACINGS TO PLAN FILES

FILE FOLDER NO. 2

Subdivision Chief: <i>P. E. Gans</i>	Proj. No. 2244
Date: FEB. 10, 1945	Sheet 15 of 50
Drawn by: <i>T. J. Gans</i>	Set: <i>Ch. 2, 2nd</i>
Checked by: <i>J. P. Gans</i>	Set: <i>Ch. 2, 2nd</i>
Reviewed by: <i>J. P. Gans</i>	Set: <i>Ch. 2, 2nd</i>
Approved by: <i>J. P. Gans</i>	Set: <i>Ch. 2, 2nd</i>
MAIN BUILDING NO. 400.	VETERANS ADMINISTRATION
TOMAH, WISCONSIN	400-13
REVISIONS	NUMBER
1	1
2	2
3	3
4	4
5	5
6	6
7	7
8	8
9	9
10	10
11	11
12	12
13	13
14	14
15	15
16	16
17	17
18	18
19	19
20	20
21	21
22	22
23	23
24	24
25	25
26	26
27	27
28	28
29	29
30	30
31	31
32	32
33	33
34	34
35	35
36	36
37	37
38	38
39	39
40	40
41	41
42	42
43	43
44	44
45	45
46	46
47	47
48	48
49	49
50	50